

Feet

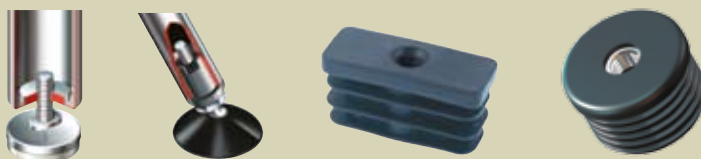
Machinery Feet and Inserts



296-300



Adjustable Feet and Inserts



301-308



Self-Adhesive and Screw-On Feet



309-313



Nail-On and Saddle Feet



314-315



Insert Feet



316-319



Feet

Our feet are ideal for levelling items resting on uneven floors, for wooden cabinets, equipment enclosures, and free-standing electrical/electronic equipment. Our PVC and stick-on feet and buffers are ideal for protecting floor surfaces and giving extra stability



Pressed Stainless Steel Bolt Down Feet

- High Load Capacity
- Offers standard and rubber pad base
- Ideal for conveyors and machines
- See page 298

Stick-On Feet/Buffers

- Made of durable non-marking PU material
- Used universally throughout the furniture industry as sound-dampening stops
- Ideal for glass top applications
- Extensively used as non-slip feet and spacers, reducing shock and vibration
- See page 309



Premium Machinery Mounting Feet

SR 1569

Plain Base with Stainless Steel or ENP Mild Steel Stud

**STAINLESS
STEEL**

- Stud manufactured from solid hexagon bar by rolling process ensuring both accuracy and strength of thread
- Nylon base offers high-load capacity, chemical resistance and stability during temperature change
- 10mm diameter mounting hole



Plain Black Nylon Base

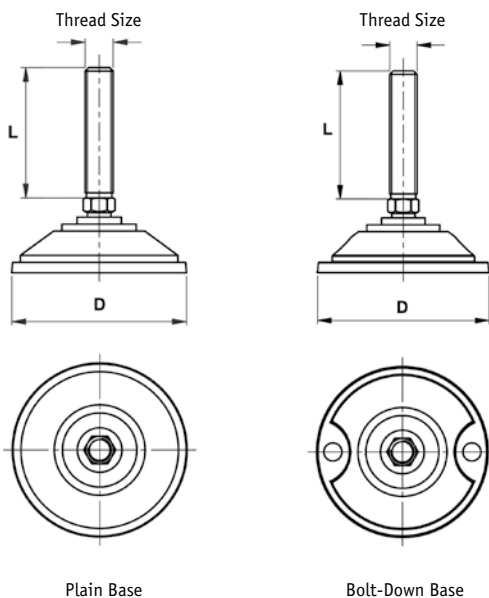
Part Number		Thread Size	Dimensions (mm)		Approximate Load Capacity (kg)	Std Pack Qty
Stainless Steel Stud	ENP Mild Steel Stud		D	L		
462402	-	M8	55	60	400	48
462403	-	M10	55	75	500	48
462404	462415	M12	55	75	600	24
462405	462416	M12	55	125	600	24
-	462417	M12	55	150	600	8
462406	462418	M12	70	75	1000	24
-	462419	M12	70	150	1000	8
462407	-	M12	70	125	1000	8
462408	462420	M16	70	75	1500	8
462409	462421	M16	70	150	1500	4
462410	-	M16	70	200	1500	4
462411	462422	M16	100	75	2000	4
-	462423	M16	100	100	2000	4
462412	462424	M16	100	150	2000	4
-	462425	M16	100	200	2000	4
462413	462426	M20	100	150	2000	4
462414	-	M24	100	200	2000	4

Bolt-Down Black Nylon Base

Part Number		Thread Size	Dimensions (mm)		Approximate Load Capacity (kg)	Std Pack Qty
Stainless Steel Stud	ENP Mild Steel Stud		D	L		
462427	462433	M12	100	75	1000	8
462428	462434	M12	100	125	1000	8
-	462435	M12	100	150	1000	8
462429	462436	M16	100	75	2000	8
462430	462437	M16	100	150	2000	8
-	462438	M16	100	200	2000	8
462431	462439	M20	100	150	2000	4
462432	-	M20	100	200	2000	4
-	462440	M24	100	150	2000	4

Plain Steel Base

Part Number		Thread Size	Dimensions (mm)		Approximate Load Capacity (kg)	Std Pack Qty
Stainless Steel Stud	ENP Mild Steel Stud		D	L		
462441	-	M8	38	60	450	24
462442	-	M10	38	75	600	24
462443	-	M12	55	75	1500	8
462444	-	M12	55	125	1500	8
462445	-	M12	55	160	1500	8
462446	-	M16	70	75	2000	4
462447	462451	M16	70	150	2000	4
462448	-	M16	70	200	2000	4
462449	462453	M20	100	150	3000	4



Standard Machine Feet

SR 1545

Nylon Base with Zinc Plated Steel Bolt

- Ideal for mounting machinery or conveyers
- High load bearing capacity
- Maximum recommended load; 900Kg
- 20° Articulation



SPLIT PACKS AVAILABLE

Bolt Down Nylon Base

Part Number	Thread Size	Dimensions (mm)		Std Pack Qty
		Foot Dia	Stud Length	
468600	M8	60	80	40
468601	M10	60	70	40
468602	M10	60	125	40
468603	M12	80	100	24
468604	M12	80	150	24
468605	M16	80	100	20
468606	M16	80	150	20
468607	M12	100	125	20
468608	M16	100	100	20
468609	M16	100	200	20
468610	M16	120	150	20
468611	M16	120	200	20
468612	M20	120	150	48
468613	M24	120	200	40

Plain Nylon Base

Part Number	Thread Size	Dimensions (mm)		Std Pack Qty
		Foot Dia	Stud Length	
468564	M8	40	25	40
468565	M8	40	40	40
468566	M8	40	80	40
468567	M8	50	40	40
468568	M8	50	60	40
468569	M8	50	80	40
468570	M10	50	45	40
468571	M10	50	70	40
468572	M10	50	90	40
468573	M10	60	45	40
468574	M10	60	70	40
468575	M10	60	125	40
468576	M12	60	66	24
468577	M12	60	80	24
468578	M12	60	100	24
468579	M12	60	125	24
468580	M12	60	150	24
468581	M12	80	66	24
468582	M12	80	100	24
468583	M12	80	125	24
468584	M12	80	150	24
468585	M16	80	66	20
468586	M16	80	100	20
468587	M16	80	150	20
468588	M16	100	66	20
468589	M16	100	100	20
468590	M16	100	125	20
468591	M16	100	150	20
468592	M16	100	200	20
468593	M16	120	150	20
468594	M16	120	200	20
468595	M20	120	125	12
468596	M20	120	150	12
468597	M20	120	200	12
468598	M24	120	200	12
468599	M24	120	250	12

Non-Slip Feet

- Suitable for SR 1545 feet
- Provides extra friction to prevent slippage



Non-slip Feet

Part Number		Dimensions (mm)		Std Pack Qty
For Plain Base	For Bolt-Down Base	Foot Dia		
466652	-	40		40
466653	-	50		40
466654	466660	60		24
466655	466661	80		20
466656	466662	100		20
466657	466663	120		12

Pressed Steel Bolt Down Feet

SR 5440

Galvanised Steel, NBR 80 Rubber

- High load capacity
- 8° articulation
- 4 x 12.5mm fixing holes
- With or without rubber pad for base
- Ideal for conveyors and machines

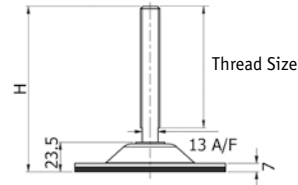
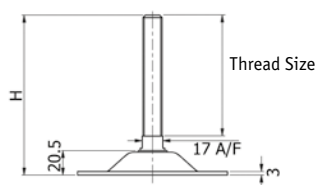
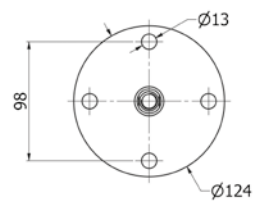
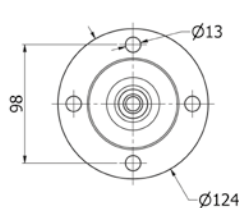


Standard



Rubber Pad Version

NEW



Part Number		Thread Size	Dimensions (mm) H	Maximum Static Load N	Std Pack Qty
Standard	Rubber Pad Version				
493684	493685	M16 x 100	134	20000	2
493686	493687	M16 x 150	184	20000	2
493688	493689	M20 x 100	134	20000	2
493690	493691	M20 x 150	184	20000	2

Pressed Stainless Steel Bolt Down Feet

SR 5441

304 Stainless Steel, NBR 80 Rubber

- High load capacity
- 8° articulation
- 4 x 12.5mm fixing holes
- With or without rubber pad for base
- Ideal for conveyors and machines



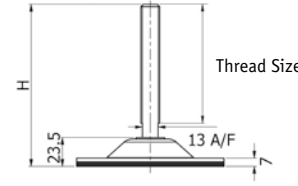
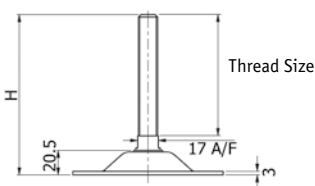
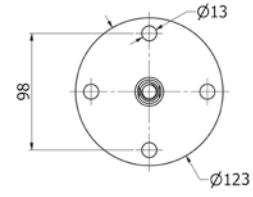
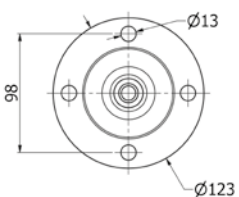
Standard



Rubber Pad Version

NEW

STAINLESS STEEL



Part Number		Thread Size	Dimensions (mm) H	Maximum Static Load N	Std Pack Qty
Standard	Rubber Pad Version				
493692	493693	M16 x 100	134	20000	2
493694	493695	M16 x 150	184	20000	2
493696	493697	M20 x 100	134	20000	2
493698	493699	M20 x 150	184	20000	2

Vibration Dampening Machine Feet

SR 5442

Base: Pressed stainless steel type 303

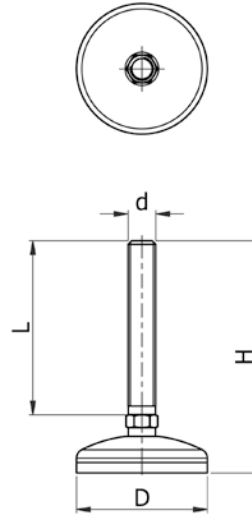
Stud: Stainless steel type 303

- 7° Articulation
- Designed to absorb vibration
- High adhesion to floor
- Application; Machinery

NEW

STAINLESS STEEL

Part Number	Dimensions (mm)				Max Loading (kg)	Std Pack Qty
	d	L	D	H		
493705	M10	50	50	75	350	4
493706	M10	100	50	125	350	4
493707	M12	100	50	125	350	4
493708	M12	100	50	175	350	4
493709	M16	100	50	128	350	4
493710	M16	100	75	133	750	4
493711	M16	150	75	183	750	4
493712	M16	100	100	138	1000	4
493713	M20	150	100	191	1000	4
493714	M24	150	100	193	1000	4



Vibration Dampening Machine Feet - Bolt Down

SR 5443

Base: Pressed stainless steel type 303 with inset Nitrile rubber core

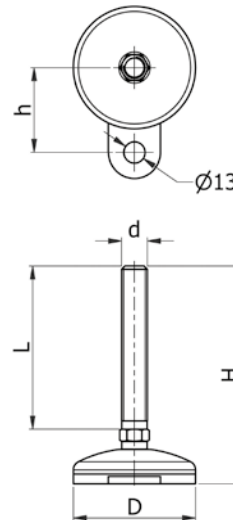
Stud: Stainless steel type 303

- 7° Articulation
- Bolt down
- Designed to absorb vibration
- High adhesion to floor
- Application: Machinery

NEW

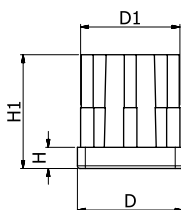
STAINLESS STEEL

Part Number	Dimensions (mm)						Max Loading (kg)	Std Pack Qty
	d	L	H	D	h			
493715	M16	150	183	75	52	750	4	
493716	M20	150	183	75	52	750	4	
493717	M16	150	188	100	67	1000	4	
493718	M20	150	191	100	67	1000	4	
493719	M24	150	193	100	67	1000	4	



Heavy Duty Square Threaded Inserts

SR 5437



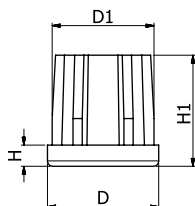
Nylon with Nickel Plated Brass or Stainless Steel Inserts

- Interference fit
- Designed for use with machine feet
- Heavy duty for high load capacity

Part Number		Gauge (mm)	Thread Size	Dimensions (mm)				Maximum Static Load N	Std Pack Qty
Nickel Plated Brass Insert	Stainless Steel Insert			D	D1	H	H1		
493605	493622	1.5	M10	30	27.5	6	33	5500	24
493606	493623	1.5	M12	30	27.5	6	33	5500	24
493607	493624	1.5	M16	30	27.5	6	33	5500	24
493608	493625	1.5	M10	40	37.5	8	43	8000	24
493609	493626	1.5	M12	40	37.5	8	43	8000	24
493610	493627	1.5	M16	40	37.5	8	43	8000	24
493611	493628	1.5	M20	40	37.5	8	43	8000	24
493612	493629	2.0	M10	40	36.5	8	43	8000	24
493613	493630	2.0	M12	40	36.5	8	43	8000	24
493614	493631	2.0	M16	40	36.5	8	43	8000	24
493615	493632	2.0	M20	40	36.5	8	43	8000	24
493616	493633	1.5	M12	50	47.5	10	55	9500	16
493617	493634	1.5	M16	50	47.5	10	55	9500	16
493618	493635	1.5	M20	50	47.5	10	55	9500	16
493619	493636	2.0	M12	50	45.5	10	55	9500	16
493620	493637	2.0	M16	50	45.5	10	55	9500	16
493621	493638	2.0	M20	50	45.5	10	55	9500	16

Heavy Duty Round Threaded Inserts

SR 5438



Nylon with Nickel Plated Brass or Stainless Steel Inserts

- Interference fit
- Designed for use with machine feet
- Heavy duty for high load capacity

Part Number		Gauge (mm)	Thread Size	Dimensions (mm)				Maximum Static Load N	Std Pack Qty
Nickel Plated Brass Insert	Stainless Steel Insert			D	D1	H	H1		
493639	493656	1.0	M10	30	28.5	6	35	3200	24
493640	493657	1.0	M12	30	28.5	6	35	3200	24
493641	-	1.0	M16	30	28.5	6	35	3200	24
493642	493658	1.5	M10	38	35.5	8	43	5500	24
493643	493659	1.5	M12	38	35.5	8	43	5500	24
493644	493660	1.5	M16	38	35.5	8	43	5500	24
493645	-	1.5	M10	42	39.5	8	42	6500	24
493646	493661	1.5	M12	42	39.5	8	42	6500	24
493647	493662	1.5	M16	42	39.5	8	42	6500	24
493648	493663	1.5	M20	42	39.5	8	42	6500	24
493649	-	1.5	M10	48	45.5	11	49	8000	24
493650	493664	1.5	M12	48	45.5	11	49	8000	24
493651	493665	1.5	M16	48	45.5	11	49	8000	24
493652	493666	1.5	M20	48	45.5	11	49	8000	24
493653	493667	1.5	M12	50	47.5	11	49	8500	24
493654	493668	1.5	M16	50	47.5	11	49	8500	24
493655	493669	1.5	M20	50	47.5	11	49	8500	24

All-Metal Threaded Inserts

SR 1567

Cast Aluminium Alloy

- For heavy-duty applications

SPLIT PACKS AVAILABLE



Round (Metric)

Part Number	Tube Size (mm)	Gauge (mm)	Thread Size	Std Pack Qty
PZAR320-15M10	32	1.5	M10	200
PZAR320-2M10	32	2.0	M10	250

Square (Metric)

Part Number	Tube Size (mm)	Gauge (mm)	Thread Size	Std Pack Qty
PZAS250-15M10	25 x 25	1.5	M10	200
PZAS250-2M10	25 x 25	2.0	M10	200
PZAS300-15M10	30 x 30	1.5	M10	200
PZAS300-2M10	30 x 30	2.0	M10	200
465498	30 x 30	2.5	M10	200
PZAS300-2M12	30 x 30	2.0	M12	200
PZAS400-15M10	40 x 40	1.5	M10	100
466585	40 x 40	2.0	M10	100
466584	40 x 40	2.5	M10	100

Rectangular (Metric)

Part Number	Tube Size (mm)	Gauge (mm)	Thread Size	Std Pack Qty
PZAT500250-2M10	50 x 25	2.0	M10	135
PZAT500300-2M10	50 x 30	2.0	M10	125
PZAT600300-2M10	60 x 30	2.0	M10	100
PZAT600300-25M1	60 x 30	2.5	M10	150

Rectangular (Imperial)

Part Number	Tube Size (mm)	Gauge (mm)	Thread Size	Std Pack Qty
PZAT508254-20M1	50.8 x 25.4	2.0	M10	200

All-Metal Threaded Inserts - Steel

SR 1567

Steel

- For heavy-duty applications



Round (Imperial)

Part Number	Tube Size (mm)	Tube Size (ins)	Gauge (mm)	Gauge	Thread Size	Std Pack Qty
PZFR254-16M10	25.4	1	1.6	16	M10	500
PZFR317-16M10	31.7	1 1/4	1.6	16	M10	250

Square (Imperial)

Part Number	Tube Size (mm)	Tube Size (ins)	Gauge (mm)	Gauge	Thread Size	Std Pack Qty
PZFL254-18M08*	25.4 x 25.4	1 x 1	1.2	18	M8	500
PZFS254-16M10	25.4 x 25.4	1 x 1	1.6	16	M10	250

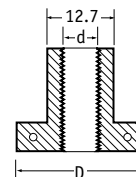
* Light-duty style threaded, no bush.

Hinged Threaded Insert

SR 1570

Black Nylon 6

- Insert into metal panel
- Use in conjunction with M8 adjustable foot or tilt glide

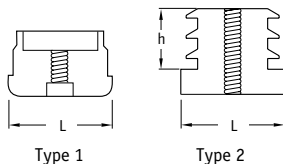


Part Number	Dimensions (mm)		Std Pack Qty
	d	D	
199479	8	20	5000

Threaded Inserts

SR 1570

- Can be used with either adjustable feet (SR 1572) or adjustable tilt glides (SR 1575)
- M8 and M10 thread sizes available for Type 2
- Suitable for wall thickness of 1.0 - 2.0mm



Square - Type 1 (Imperial) (Thread Size M8)

Part Number		Dimensions		Material	Std Pack Qty
16 Gauge	18 Gauge	L (ins)	L (mm)		
-	39768	3/4	19.0	HIPS	4000
199412	199412	1	25.4	Nylon	1500
-	39772	1 1/4	31.7	HIPS	600
462389	-	1 1/4	31.7	HIPS	500
-	462390*	1 1/2	38.1	HIPS	250
462391*	-	1 1/2	38.1	HIPS	250

* Thread size M10

Round - Type 1 (Imperial) (Thread Size M8)

Part Number			Dimensions		Material	Std Pack Qty
14 Gauge	16 Gauge	18 Gauge	L (ins)	L (mm)		
-	39761	39762	3/4	19.0	Nylon	1000
-	39765	39765	1 1/4	31.7	Nylon	1000
-	462381	-	1 1/2	38.1	Nylon	1500
462382*	-	-	1 3/4	44.4	Nylon	250

* Thread size M10

Material Key

PP = Polypropylene

HIPS = High-Impact Polystyrene

Square - Type 2 (Metric)

Part Number	Dimensions (mm)		Thread Size	Material	Std Pack Qty
	L	h			
466709	15	18	M8	HDPE	1000
466710	16	18	M8	HDPE	1000
466711	18	18	M8	HDPE	1000
466722	20	18	M8	HDPE	1000
466712	22	18	M8	HDPE	1000
466713	25	19	M8	HDPE	1000
466715	25	19	M10	HDPE	1000
466727	30	20	M8	HDPE	1000
466716	30	20	M10	HDPE	1000
466714	35	21	M10	HDPE	500
466717	40	22	M10	HDPE	500
466720	50	30	M8	HDPE	250
466699	50	30	M10	HDPE	250

Rectangular - Type 2 Metric

Part Number	Dimensions (mm)		Thread Size	Material	Std Pack Qty
	L	h			
466688	20 x 30	19	M8	HDPE	1000
466691	20 x 30	19	M10	HDPE	1000
466723	20 x 35	19	M8	HDPE	1000
466721	20 x 35	19	M10	HDPE	1000
466724	20 x 40	19	M8	HDPE	1000
466700	20 x 40	19	M10	HDPE	1000
466689	20 x 50	19	M8	HDPE	500
466726	20 x 50	19	M10	HDPE	500
466690	20 x 60	19	M8	HDPE	500
465414	20 x 60	19	M10	HDPE	500
466725	25 x 50	22	M8	HDPE	500
466718	25 x 50	22	M10	HDPE	500
462385*	60 x 30	16	M10	LDPE	250

* Plain Shank

Round - Type 2 Metric

Part Number	Dimensions (mm)		Thread Size	Material	Std Pack Qty
	L	h			
462371	16	34	M6	Nylon	3500
462372	16	34	M8	Nylon	3500
466704	18	18	M8	HDPE	1000
466705	20	18	M8	HDPE	1000
462373	20	19	M10	PP	2000
466706	22	19	M8	HDPE	1000
466702	22	19	M10	HDPE	1000
462375	25	33	M6	Nylon	750
466692	25	19	M8	HDPE	1000
466695	25	19	M10	HDPE	1000
466693	28	19	M8	HDPE	1000
466686	28	19	M10	HDPE	1000
466694	30	19	M8	HDPE	1000
466687	30	19	M10	HDPE	1000
466719	32	18	M8	HDPE	1000
466707	32	19	M10	HDPE	1000
466708	35	20	M10	HDPE	500
462377	38	25	M10	Nylon	650
466561	38	38	25	HDPE	250
462379	40	19	M10	PP	500
466696	40	20	M10	HDPE	1000
466697	45	21	M10	HDPE	500
466703	50	20	M8	HDPE	250
466698	50	21	M10	HDPE	500

Metal-Threaded Inserts - Standard

SR 1571

HDPE with Steel Nut

- Standard-Duty insert
- Ideal for use with adjustable feet, tilt glides and castors
- Metal thread allows smooth repeatable adjustment

Round

Part Number	Dimensions (mm)				Thread Size	Std Pack Qty
	L	h	h ₁	L (gauge)		
466242	19	5	20	1.0 - 1.5	M6	1000
466243	20	5	20	1.0 - 1.5	M6	1000
466244	20	5	20	1.0 - 1.5	M8	1000
466245	25	5	20	1.0 - 1.5	M6	1000
466246	25	5	20	1.0 - 1.5	M8	1000
466247	30	5	20	1.0 - 1.5	M8	1000
466248	30	5	20	1.0 - 1.5	M10	1000
466249	32	5	20	1.0 - 1.5	M8	1000
466250	32	5	20	1.0 - 1.5	M10	1000
466251	35	5	20	1.0 - 1.5	M8	500
466252	35	5	20	1.0 - 1.5	M10	500
466253	38	5	20	1.0 - 1.5	M8	500
466254	38	5	20	1.0 - 1.5	M10	500
466255	38	5	20	1.0 - 1.5	M12	500
466256	40	5	20	1.0 - 1.5	M8	250
466257	40	5	20	1.0 - 1.5	M10	250
466258	40	5	20	1.0 - 1.5	M12	500
466262	50	5	20	1.0 - 1.5	M8	500
466263	50	5	20	1.0 - 1.5	M10	250
466264	50	5	20	1.0 - 1.5	M12	500
466265	60	5	20	1.0 - 1.5	M8	500
466266	60	5	20	1.0 - 1.5	M10	250
466267	60	5	20	1.0 - 1.5	M12	250



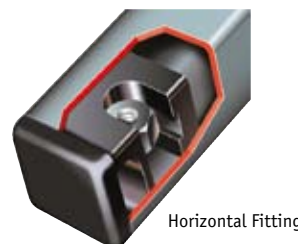
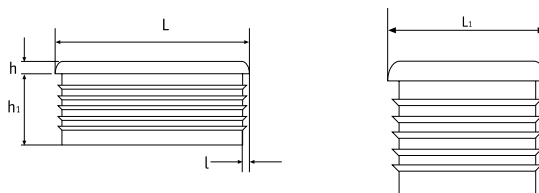
Square

Part Number	Dimensions (mm)				Thread Size	Std Pack Qty
	L	h	h ₁	L (gauge)		
466268	19	5	20	1.0 - 1.5	M6	1000
466269	20	5	20	1.0 - 1.5	M6	1000
466270	20	5	20	1.0 - 1.5	M8	1000
466271	25	5	20	1.0 - 1.5	M6	1000
466272	25	5	20	1.0 - 1.5	M8	1000
466273	30	5	20	1.0 - 1.5	M8	1000
466274	30	5	20	1.0 - 1.5	M10	1000
466275	35	5	20	1.0 - 1.5	M8	500
466276	35	5	20	1.0 - 1.5	M10	500
466277	40	5	20	1.0 - 1.5	M8	500
466278	40	5	20	1.0 - 1.5	M10	500
466279	40	5	20	1.0 - 1.5	M12	500
466280	50	5	20	1.0 - 1.5	M8	250
466281	50	5	20	1.0 - 1.5	M10	250
466282	50	5	20	1.0 - 1.5	M12	250



Rectangular

Part Number	Dimensions (mm)				Thread Size	Std Pack Qty
	L x L ₁ (mm)	h	h ₁	L (gauge)		
466283	30 x 20	5	20	1.0 - 1.5	M8	1000
466284	30 x 20	5	20	1.0 - 1.5	M10	1000
466285	40 x 20	5	20	1.0 - 1.5	M8	500
466286	40 x 20	5	20	1.0 - 1.5	M10	500
466287	40 x 30	5	20	1.0 - 1.5	M8	500
466288	40 x 30	5	20	1.0 - 1.5	M10	500
466289	50 x 25	5	20	1.0 - 1.5	M8	500
466290	50 x 25	5	20	1.0 - 1.5	M10	500
466291	50 x 30	5	20	1.0 - 1.5	M8	500
466292	50 x 30	5	20	1.0 - 1.5	M10	500
466293	60 x 30	5	20	1.0 - 1.5	M8	250
466294	60 x 30	5	20	1.0 - 1.5	M10	250



Horizontal Fitting - Plastic with Metal Nut

Part Number	Tube Size (mm)	Shape	Wall Thickness (mm)	Thread Size	Std Pack Qty
PZHS254-18M08	25.4 x 25.4	Square	1.2	M8	1000

Standard Non-Articulating Adjustable Feet

SR 1572

Black Polypropylene

- Outer-Hex Slotted Head for adjustment
- POZI socket in base for easy adjustment



25mm Diameter Foot

Part Number		Stud Length	Std Pack Qty	
M6	M8		M6	M8
466121	-	20	500	-
-	466122	25	-	500
-	466123	40	-	350
-	466124	55	-	250
-	466125	70	-	200
-	466126	100	-	150

30mm Diameter Foot

Part Number		Stud Length	Std Pack Qty	
M8	M10		M8	M10
466127	466132	25	400	300
466128	466133	40	300	200
466129	466134	55	200	100
466130	466135	70	150	100
466131	466136	100	100	50

38mm Diameter Foot

Part Number			Stud Length	Std Pack Qty		
M8	M10	M12		M8	M10	M12
466137	466142	466147	25	400	300	200
466138	466143	466148	40	300	200	150
466139	466144	466149	55	200	100	150
466140	466145	466150	70	150	100	100
466141	466146	466151	100	100	50	50

48mm Diameter Foot

Part Number			Stud Length	Std Pack Qty		
M8	M10	M12		M8	M10	M12
466152	466157	466162	25	300	200	150
466153	466158	466163	40	200	150	100
466154	466159	466164	55	150	100	100
466155	466160	466165	70	150	100	200
466156	466161	466166	100	100	50	50

Standard Articulating Adjustable Feet

SR 1572

Black Polypropylene

- Allow adjustment under load with base remaining stationary
- Outer-Hex Slotted Head for adjustment
- POZI socket in base for rapid assembly



25mm Diameter Foot

Part Number		Stud Length	Std Pack Qty	
M6	M8		M6	M8
466212	-	20	500	-
-	466167	25	-	500
-	466168	40	-	350
-	466169	55	-	250
-	466170	70	-	200
-	466171	100	-	150

30mm Diameter Foot

Part Number		Stud Length	Std Pack Qty	
M6	M8		M6	M8
466172	466177	25	400	300
466173	466178	40	300	200
466174	466179	55	200	100
466175	466180	70	150	100
466176	466181	100	100	50

38mm Diameter Foot

Part Number			Stud Length	Std Pack Qty		
M8	M10	M12		M8	M10	M12
466182	466187	466192	25	400	300	200
466183	466188	466193	40	300	200	150
466184	466189	466194	55	200	100	150
466185	466190	466195	70	150	100	100
466186	466191	466196	100	100	50	50

48mm Diameter Foot

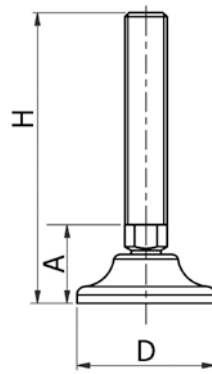
Part Number			Stud Length	Std Pack Qty		
M8	M10	M12		M8	M10	M12
466197	466202	466207	25	300	200	150
466198	466203	466208	40	200	150	100
466199	466204	466209	55	150	100	100
466200	466205	466210	70	150	100	50
466201	466206	466211	100	100	50	50

Industrial Articulated Stainless Steel Feet

SR 5439

Black Nylon Base, 304 Stainless Steel Thread

- 30° articulation
- Ideal for catering and food machinery



Part Number	Thread Size	Dimensions (mm)			Maximum Static Load N	Std Pack Qty
		D	A	H		
493670	M8x50	40	27	77	10000	24
493671	M8x75	40	27	102	10000	24
493672	M10x75	40	27	102	10000	24
493673	M12x75	40	27	102	10000	24
493674	M10x100	40	27	127	10000	24
493675	M12x100	40	27	127	10000	24
493676	M10x75	65	33	108	11000	8
493677	M12x75	65	33	108	11000	8
493678	M10x100	65	33	133	11000	8
493679	M12x100	65	33	133	11000	8
493680	M16x100	65	37	137	15000	8
493681	M20x100	65	37	137	15000	8
493682	M16x150	65	37	187	15000	8
493683	M20x150	65	37	187	15000	8

Non-Articulating Adjustable Feet

SR 1572

Black Polypropylene

- Use alone or with threaded inserts



Articulating Adjustable Feet

SR 1572

Black Polypropylene

- Allow adjustment under load with base remaining stationary



Part Number			Dimensions (mm)		Std Pack Qty		
M8	M10	M12	Foot Dia	Stud Length	M8	M10	M12
-	-	-	25	15	750	-	-
49613	-	-	25	25	1000	-	-
462201	-	-	25	40	500	-	-
465523	-	-	30	50	400	-	-
49537	-	-	34	38	500	-	-
465527	-	-	38	20	375	-	-
49608	-	-	38	25	500	-	-
49612	-	-	38	38	500	-	-
-	466586	-	38	40	250	-	-
465528	466587	-	38	50	250	225	-
462315	465524	-	38	60	250	200	-
-	465525	-	38	70	-	175	-
-	-	-	38	80	200	-	-
465526	465530	-	38	100	150	125	-
-	466588	-	48	30	-	200	-
460810	466591	-	48	40	400	350	-
-	466592	-	48	50	-	150	-
-	465531	-	48	60	350	150	-
-	465532	-	48	70	-	125	-
-	465533	-	48	100	-	100	-
-	465534	-	48	120	-	150	-
-	465520	465521	58	50	-	125	200

Part Number			Dimensions (mm)		Std Pack Qty		
M8	M10	M12	Foot Dia	Stud Length	M8	M10	M12
465500	465499	-	30	30	450	225	-
-	465501	-	30	40	-	250	-
-	465502	-	30	50	-	225	-
-	466590	-	30	70	-	175	-
465503	-	-	30	80	250	-	-
465506	465504	465505	38	30	350	225	150
465511	466589	-	38	40	325	250	-
-	465507	-	38	50	-	225	-
-	-	466594	38	60	-	-	150
-	-	465509	38	70	-	-	100
465512	465508	-	38	80	225	150	-
-	-	465510	38	90	-	-	100
-	465516	-	48	30	-	200	-
465514	465484	-	48	40	400	250	-
465519	465517	-	48	50	200	150	-
-	465518	-	48	60	-	150	-
-	465515	-	48	100	-	100	-
-	-	465522	58	100	-	-	75

Adjustable Tilt Glides

SR 1575

Black Polypropylene

- Bright zinc-plated steel tilt ball and stud
- Ideal for angled applications
- Can be adjusted for use on uneven floor surfaces
- Ideal for use with SR1570 & SR1571 threaded inserts



Part Number	Thread Size	Dimensions (mm)		Std Pack Qty
		Foot Dia	Stud Length	
462183	M6	25.0	25.0	750
462184	M6	32.5	25.0	500
110728	M8	25.0	12.0	100
110732	M8	25.0	25.0	100
110729	M8	32.0	12.0	100
110733	M8	32.0	25.0	100
110730	M8	38.0	12.0	100
110734	M8	38.0	25.0	100
110731	M8	47.5	12.0	100
110735	M8	47.5	25.0	100
110736	M10	25.0	15.0	100
110740	M10	25.0	38.0	100
110744	M10	25.0	50.0	100
110737	M10	32.0	15.0	100
110741	M10	32.0	38.0	100
110745	M10	32.0	50.0	100
110738	M10	38.0	15.0	100
110742	M10	38.0	38.0	100
110746	M10	38.0	50.0	100
110739	M10	47.5	15.0	100
110743	M10	47.5	38.0	100
110747	M10	47.5	50.0	100

Low-Profile Adjustable Feet

SR 1572

Black Nylon or Polyethylene

- Robust, sturdy and durable
- Zinc-plated steel stud
- Ideal for uneven surfaces



Part Number	Dimensions (mm)		Thread Size	Std Pack Qty
	Foot Dia	Stud Length		
465584*	20	20	M6	2000
465585*	20	25	M6	1000
465586*	20	50	M6	1000
465588*	25	25	M6	1000
465587*	20	16	M8	1000
465329†	25	25	M8	1000
465589*	25	37	M8	500
465591*	32	20	M8	600
462197*	32	50	M8	500
465330†	35	25	M8	500
465331†	25	35	M10	500
465590*	32	25	M10	500
465328†	35	35	M10	500
465592*	44	20	M10	250

* Polyethylene

† Nylon

Heavy-Duty Adjusters

SR 1568

Black Nylon

- Integral hexagonal nut allows adjustment under load
- Screwdriver slot in base enables fast assembly with power tools
- Bases of 47.5mm and 37.5mm dia. (flat pattern only) have three moulded screw holes for fixing

Part Number	Dimensions (mm)		Thread Size	Std Pack Qty
	Foot Dia	Stud Length		
RD25M1035F	25.0	35.0	M10	250
RD25M1045F	25.0	45.0	M10	250
RD25M1070F	25.0	70.0	M10	250
RD375M1035F	37.5	35.0	M10	250
RD375M1045F	37.5	45.0	M10	250
RD475M1045F	47.5	45.0	M10	175
RD475M1045C*	47.5	45.0	M10	175
RD475M1070F	47.5	70.0	M10	125
RD25M1245F	25.0	45.0	M12	125
RD475M1245F	47.5	45.0	M12	200

* Conical-shaped base.



Large-Diameter Adjustable Feet

SR 1569

BZP Steel Stud and Plastic Base

Part Number	Thread Size	Dimensions (mm)		Std Pack Qty
		Foot Dia	Stud Length	
RLAB70M1020	M10	70	20	50
RLAB70M1060	M10	70	60	50
RLAB70M1280	M12	70	80	50

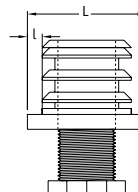


One-Piece Adjustable Feet

SR 1573

Black Nylon

- Rugged, durable and heavy duty
- Resist lateral stress
- One-piece threaded insert and height adjuster



Square

Part Number	Dimensions (mm)			Axial load kg approx.	Std Pack Qty
	L	l (gauge)	Thread		
465494	20 x 20	1.5-2.0	M10 x 25	100	100
465495	25 x 25	1.5-2.0	M16 x 25	150	100
465496	30 x 30	1.5-2.0	M22 x 25	300	100
465489	35 x 35	1.5-2.0	M22 x 25	300	100
465490	40 x 40	1.5-2.0	M22 x 25	300	100
465491	45 x 45	1.5-2.0	M30 x 30	300	100
465492	50 x 50	1.5-2.0	M30 x 30	300	100

Round

Part Number	Dimensions (mm)			Axial load kg approx.	Std Pack Qty
	L	l (gauge)	Thread		
465486	32	1.5-2.0	M22 x 25	300	100
465487	35	1.5-2.0	M22 x 25	300	100
465488	40	1.5-2.0	M22 x 25	300	100
465493	45	1.5-2.0	M30 x 30	300	100
460830	50	1.5-2.0	M30 x 30	300	100
463563*	60	1.5-2.0	M45 x 45	300	100

* Black HIPS

All-metal Height Adjusters

SR 1564

BZP Steel

- Articulating stud



Part Number	Thread Size	Dimensions (mm)		Std Pack Qty
		Foot Dia	Stud Length	
463786	M10	46	40	200
463787	M10	46	60	175

Smooth-Based Adjustable Glides

SR 1578

Black Polyethylene

- Smooth chrome-coloured steel base offers excellent sliding movement
- Zinc-plated steel stud
- Ideal for use on carpeted floors

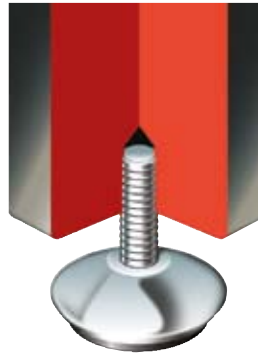


Part Number	Thread Size	Dimensions (mm)		Std Pack Qty
		Foot Dia	Stud Length	
465353	M8	30	25	500
465351	M8	40	25	250
465349	M10	30	25	500
465357	M10	40	25	250

Chrome-Capped Adjustable Feet

SR 1574

Black Polyethylene



- Attractive chrome metal covershell
- Non-tilt design provides extra stability
- Ideal for uneven surfaces
- Protect floor surface from abrasion

Part Number	Thread Size	Dimensions (mm)		Std Pack Qty
		Foot Dia	Stud Length	
465347	M6	20	10	1000
465346	M8	25	20	500
465352	M8	30	20	250
465355	M8	35	20	250
465356	M8	40	25	250
465345	M10	25	20	250
465350	M10	30	20	250
465358*	M10	40	40	250
465354*	M10	40	60	200
465359**	M10	40	25	250

* Small degree of tilt - loose swivelling adjustable nut (17mm a/f).

** Fixed hexagonal adjustable nut (10mm a/f).

Chrome-Capped Low Profile Adjustable Feet

SR 1574

Natural Nylon



- Attractive chrome metal covershell
- Bright zinc-plated steel stud
- Ideal for uneven surfaces

Part Number	Thread Size	Dimensions (mm)		Std Pack Qty
		Foot Dia	Stud Length	
RWA25M0820	M8	25	20	500
RWA35M0820	M8	35	20	250
RWA45M0820	M8	45	20	250
RWB50M0820*	M8	50	20	250
RWA45M1045	M10	45	45	500

* Style variation, cap covers entire base.

Stick-On Feet/Buffers

SR 1593

Polyurethane

- Ideal as feet or as furniture door buffers
- Easy to apply
- Self-adhesive backing
- Suitable for most smooth and dry surfaces

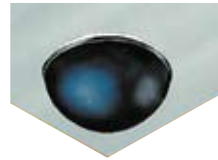


Type	Part Number				Dimensions (mm)		Std Pack Qty
	Colour				Height	Base Diameter	
	Black	Grey	White	Clear			
1	32425	461229	-	-	2.5	10.0	3000
1	32426	-	32560	494481	3.1	12.7	3000
1	32427	-	-	462164	5.7	12.7	3000
1	462171	462170	32428	462172	7.5	20.5	1000
1	494482	-	-	-	13.2	20.5	1000
2	-	-	-	462155	1.9	6.4	10000
2	-	-	-	462156	2.2	8.0	10000
2	461230	461231	-	461232	3.1	10.0	3000
2	32430	-	-	32429	5.0	11.1	3000
2	-	-	32431	-	8.0	16.0	1000
2	32432	461233	-	461234	9.5	19.0	1000
3	461236	461237	-	461238	1.8	10.0	3000
3	461241	-	-	462169	1.9	19.0	3000
3	494483	462173	-	494484	3.0	19.7	4000
3	32433	-	-	461235	3.5	7.5	3000
3	32435	461240	461239	32434	3.5	12.7	3000
3	39864	-	-	494485	4.0	19.0	2600
3	462159	-	-	462160	4.0	10.0	10000
3	-	-	-	462165	4.5	14.0	5000
3	462168	-	-	-	6.0	18.0	2000
3	43045	-	-	-	6.2	20.0	2000
3	462175	-	-	-	3.5	20.4	4000
4	462176	32436	-	494486	10.1	22.3	1000
5	39862*	-	-	-	4.0	16.5	2000

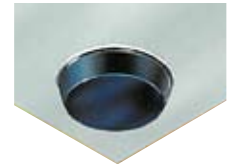
* Polyurethane foam.



Type 1



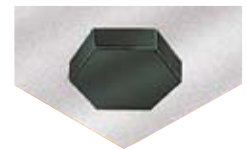
Type 2



Type 3



Type 4



Type 5



Buy any quantity!

SPLIT PACKS AVAILABLE

Grommet Feet

SR 1591

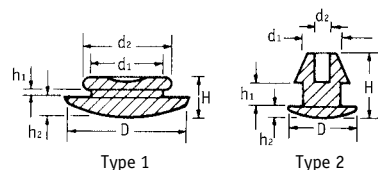
Black PVC

- Ideal for housings and cases
- Easy to fit; simply push into punched or drilled holes



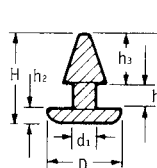
Part Number	Type	Dimensions (mm)							Std Pack Qty
		D	d1	d2	H	h1	h2	h3	
50680	1	19.0	13.1	12.0	6.5	0.8	3.2	-	10000
12493	1	15.4	9.8	12.7	7.0	1.6	2.7	-	10000
12494	1	19.0	12.8	15.9	7.5	1.6	3.2	-	3500
50493	2	10.3	4.5	2.2	7.6	1.6	2.0	-	5000
12664	2	15.8	6.8	4.0	9.7	1.5	5.0	-	10000
40022	3	7.9	3.2	-	8.3	3.2	1.6	3.5	10000
40048	3	7.9	3.7	-	7.0	1.6	2.4	3.0	10000
40059*	4	12.5	9.5	-	17.0	1.6	12.0	3.5	5000
12495	5	10.9	6.9	-	12.8	0.7	8.1	-	10000
50185	6	12.0	6.0	5.8	15.2	2.1	4.6	-	10000
34363	7	25.3	12.5	15.3	20.0	5.0	4.0	-	2000
15509	8	17.5	11.1	13.3	10.0	2.6	4.0	4.0	10000

* Style variation on flanged section.

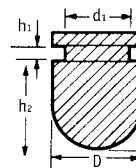


Type 1

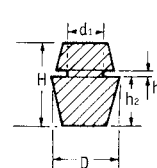
Type 2



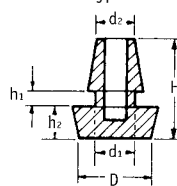
Type 3



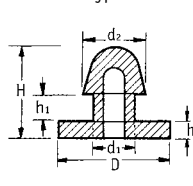
Type 4



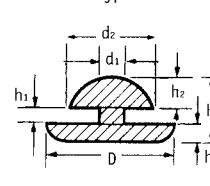
Type 5



Type 6



Type 7

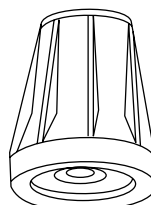


Type 8

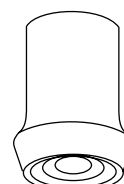
Walking Aid Feet

SR 1503

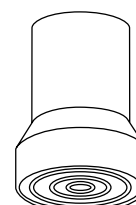
Rubber



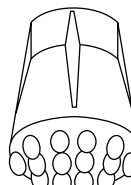
Type 1



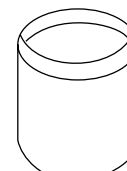
Type 2



Type 3



Type 4



Type 5

Rubber

Part Number	Type	Colour	Dimensions (mm)		Std Pack Qty
			Stick Diameter	Height	
462125*	1	Grey	19	51.5	200
462126*	2	Black	19	38.5	400
15121	3	Black	19	42.0	700
462127*	4	Black	19	39.0	500
462128*	1	Grey	22	55.0	175
462129*	2	Black	22	50.0	300
15119	3	Black	22	42.0	700
462130*	4	Black	22	39.0	400
462131*	1	Grey	25	52.0	200
462132*	2	Black	25	50.0	350
15112	3	Black	25	42.0	700
462133*	4	Black	25	39.0	500

* With metal inserts

Black Ferrule-Type

Part Number	Type	Dimensions (mm)		Std Pack Qty
		Stick Diameter	Height	
462134	5	10	26.0	1000
462135	5	13	26.5	1000
462136	5	16	26.0	1500
462137	5	19	32.0	1000
462138	5	22	38.5	750
462139	5	25	37.5	500

Stick-On Discs

SR 1577

Black Rubber

- Self-adhesive
- Suitable for smooth and dry surfaces
- Does not leave scuff marks when removed
- Slip-resistant

SPLIT PACKS AVAILABLE



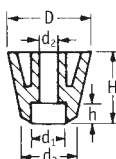
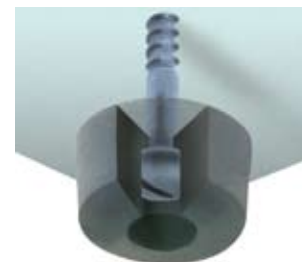
Part Number	Dimensions (mm)		Std Pack Qty
	Height	Diameter	
49093	1.5	10	1000
49094	1.5	20	1000
49095	1.5	30	1000
49096	1.5	40	1000
49097	1.5	45	1000

Screw-On Feet

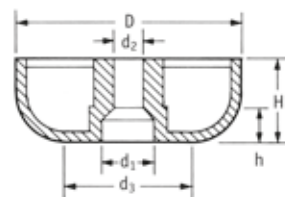
SR 1590

Black LDPE, TPR or Natural Rubber

- Ideal for wooden cabinets, equipment enclosures, free-standing electrical/electronic equipment etc
- Fit with screws (not supplied)
- TPR is recommended for excellent slip resistance



Type 1



Type 2

Part Number		Type	Dimensions (mm)						Std Pack Qty
LDPE	TPR		H	D	d3	d1	d2	h	
60470	15129	1	7.1	15.9	13.5	7.9	3.2	4.0	10000
12477	15130	1	9.5	16.4	16.4	6.4	4.0	5.6	10000
60785	15124	1	11.3	19.3	18.0	7.5	3.2	7.9	5000
51607	15125	1	11.9	19.8	18.2	9.5	4.7	6.3	5000
50842	15111	1	15.9	19.0	12.7	7.9	4.0	4.8	5000
50954	15127	1	18.2	18.5	17.5	8.5	4.8	7.9	2000
50769	15126	1	25.4	22.2	12.7	8.7	4.0	14.3	3000
50701	15140	2	9.5	17.5	17.5	7.9	4.0	5.2	3500
49098	-	2	16.0	45.0	30.0	10.5	5.0	10.0	3000
49099	-	2	19.0	55.0	40.0	10.5	5.0	12.0	750

Part Number	Type	Dimensions (mm)						Std Pack Qty
		H	D	d3	d1	d2	h	
462177	2	9.0	16.0	13.0	7.0	3.0	4.0	425
462178	2	8.0	19.0	16.0	7.0	3.0	6.0	425
462179	2	8.0	22.0	19.0	10.0	3.0	6.0	300
462180	2	9.0	25.0	20.0	13.5	5.0	6.0	250
462181	2	15.0	27.0	20.0	10.0	6.0	10.0	250
462182	2	23.0	35.0	30.0	9.0	6.0	5.0	450

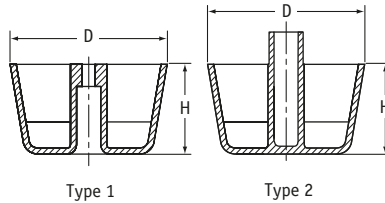
Free samples

Glide Feet

SR 1590

Polypropylene

- Ideal for wooden furniture and cabinets
- Smooth non-abrasive surface ideal for wooden and carpeted floors
- Type 1: screw fixing
- Type 2: knock-on assembly



Part Number	Colour	Type	Dimensions (mm)		Std Pack Qty
			D	H	
2421/BK	Black	1	50	34	900
2421/SIL	Silver	1	50	34	900
2420/BK	Black	2	50	34	800

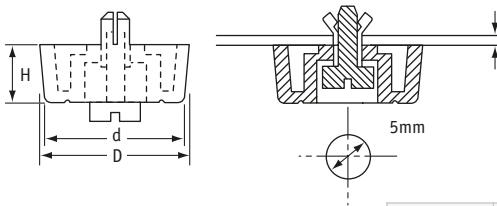
Releasable Rivet Feet

SR 1592

Black Elastomer

- Simple installation - push pin into foot

- Pin easily removed by screwdriver, releasing foot



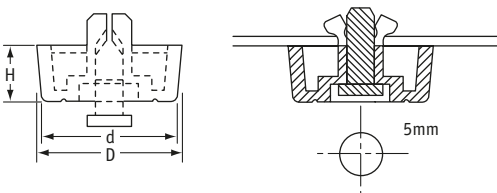
Part Number	Dimensions (mm)			Hole Diameter (mm)	Panel Thickness (mm)	Std Pack Qty
	d	D	H			
462758	20.0	24.0	14.0	5	1.0-2.3	200
462759	18.0	20.0	10.0	5	1.0-2.3	200

Rivet Feet

SR 1592

Black Polypropylene/Elastomer

- Two-piece construction comes pre-assembled
- Insert pin to fix the foot into the panel



Part Number		Dimensions (mm)			Hole Diameter (mm)	Panel Thickness (mm)	Std Pack Qty
Hard	Soft	d	D	H			
462774	462785	18	20.0	10	8.1	0.8-1.2	200
-	462786	20	21.0	6	8.1	5.0-8.0	200
-	462787	23	25.0	5	8.1	0.8-1.2	200
462049	462788	18	20.0	12	8.1	0.8-1.2	200
462778	462789	18	20.0	15	8.1	0.8-1.2	200
-	462791	20	21.0	5	5.1	0.8-2.0	200
-	462792	20	21.5	6	6.1	0.8-2.0	200

Self-Adhesive Felt Pads

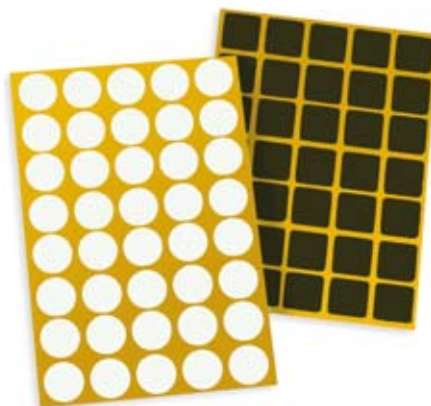
SR 1589

Brown or White Felt

- Can be used on the base of feet or inserts for smooth movement over floor surfaces

Round

Part Number		Diameter (mm)	Std Pack Qty
Brown	White		
463918	463947	10.0	5076
463919	463948	14.0	1500
463920	463949	16.0	1000
463921	463950	18.0	1000
463922	463951	20.0	1000
463923	463952	22.0	1000
463924	463953	24.0	1008
463925	463954	26.0	1024
463926	463955	28.0	1008
463927	463956	30.0	1008
463928	463957	32.0	700
463929	463958	36.0	504
463930	463959	40.0	504
463931	463960	45.0	500
463932	463961	50.0	400
463933	463962	60.0	400
463934	463963	70.0	300



Square

Part Number		Size (mm)	Std Pack Qty
Brown	White		
463935	463964	20 x 20	1000
463936	463965	25 x 25	1024
463937	463966	30 x 30	1008
463938	-	34 x 34	504
463939	463968	40 x 40	504
463940	-	45 x 45	500
463941	463970	50 x 50	400
463942	463971	100 x 100	120

Rectangular

Part Number		Size (mm)	Std Pack Qty
Brown	White		
463943	463972	20 x 30	1008
463944	463973	20 x 40	1000
463945	463974	25 x 35	1008
463946	463975	25 x 50	900



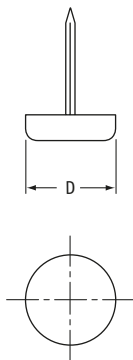
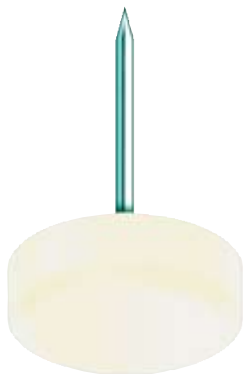
See our **NEW** Shelf Supports on pages 352-353

Nail-on Plastic Feet

SR 1598

HDPE

- Ideal for wooden furniture



Part Number	Colour	D (ins)	D (mm)	Std Pack Qty
HD01	Natural	1/2	12.7	10000
HD02	Natural	5/8	15.9	8000
HD03	Natural	3/4	19.1	6000
HD05	Natural	7/8	22.2	5000
HDW02	Woodtone	5/8	15.9	8000
HDW03	Woodtone	3/4	19.1	6000
HDW05	Woodtone	7/8	22.2	5000

Nail-on Felt Glides

SR 1563

HDPE with Felt Base

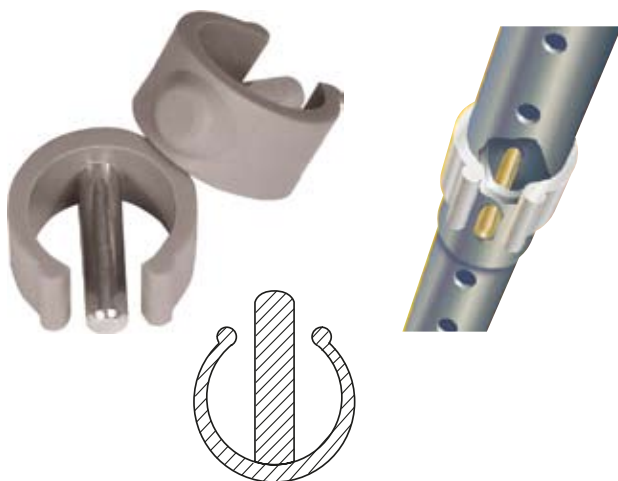


Part Number	Colour of Felt	Diameter (mm)	Std Pack Qty
463881	Grey	19.0	5000
463882	Black	22.0	5000
463883	Black	25.0	5000
463884	Black	28.0	2500

Tube Locks

SR 1508

Dark Grey Polypropylene



- Secure two telescopic tubes in place
- Metal pin provides additional strength
- Reusable
- Easy to install by drilling 1/4" hole through tube, to enable tube lock to snap into place

Part Number	To Fit Tube Size	To Fit Tube Size (mm)	Dimensions (mm)		Std Pack Qty
			Pin Diameter	Pin Length	
49160	3/4" - 7/8"	19.1 - 22.2	6	25	1000
49161	7/8" - 1"	22.2 - 25.4	6	28	1000

Double Saddle Feet

SR 1503

Black Nylon

- Used to connect adjacent tubes



Part Number	Dimensions (mm)		Std Pack Qty
	Fits Tube Dia	Distance Between Tube Centres	
466731	22	42	100
466732	25	42	100

Saddle Bases

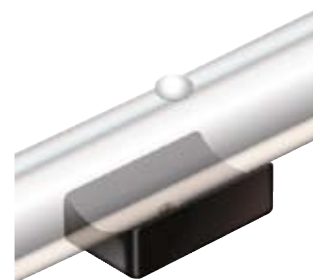
SR 1503

Black LDPE

- Act as feet when fitted to bottom of tubes



Type 1



Type 2

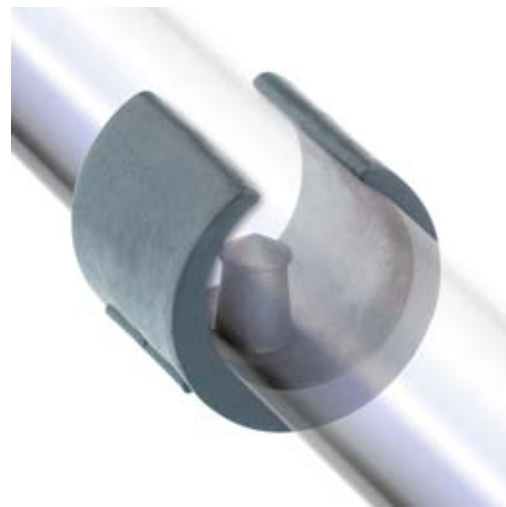
Part Number	Type	Dimensions (mm)			Hole or Peg Dia (mm)	Std Pack Qty
		Fits Tube Dia	Length	Width		
SBFA2225-B	1	22-25	50	22	5.0	1000
SBFA25-45B	1	25	45	25	5.7	1000
SBFA2830-B	1	28-30	45	25	5.0	1000
466733	2	16-19	33	22	5.0	500
466734	2	22-25	35	25	5.0	500
466735	2	28-32	40	31	5.0	250

Metric Saddle Feet

SR 1503

Black LDPE

- Fit around metal tubes to act as a foot
- Ideal for protecting floor surfaces

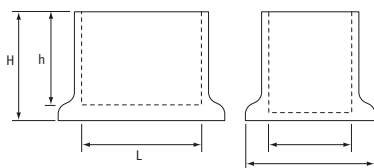


Part Number	Dimensions (mm)		Std Pack Qty
	Fits Tube Dia	Peg Dia	
461151	14-16	5.5	4000
461152	16-18	5.5	4000
461153	18-20	5.5	4000
461154	20-22	5.5	3000
461155	24-26	7.5	1500
461156	28-30	7.5	1500

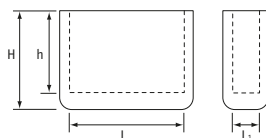
Angled & Flat Bar Feet

SR 1526

Black PE or PVC



- Ferrules to suit right-angled and flat bars
- Can be used as feet
- Ridge on edge of angled base provides extra stability
- Protect floor surfaces



Angle Bases - Black PE

Part Number	Dimensions (mm)			Std Pack Qty
	L	H	h	
465363	25 x 25	24	19	1000
HA300B	30 x 30	24	19	1000

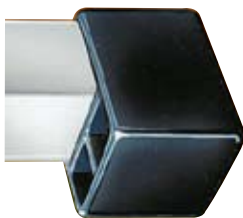
Bar Bases - Black PVC

Part Number	Dimensions (mm)			Std Pack Qty
	L x L1	H	h	
465361	25 x 5	19	15	2500
465364	25 x 6	19	15	1250
465362	30 x 6	19	15	2500

Stand-Off Feet - External Fitting

SR 1503

Black Polyethylene



Stand-Off Round Feet

SR 1559

Black LDPE



Part Number	Fits Tube Size (mm)	Std Pack Qty
HES190-BWPB	19.1 x 19.1	2000
199192	25.4 x 25.4	500
199219	38.1 x 19.1	1000
199040	50.8 x 25.4	500

Part Number	Dimensions (mm)		Std Pack Qty
	D	L	
HIR200-20B	20	46.2	500
HIR320-15B *	30	51.5	500
HIR380-20B *	38	51.7	500

* Plain shank.

Stand-Off Square Feet

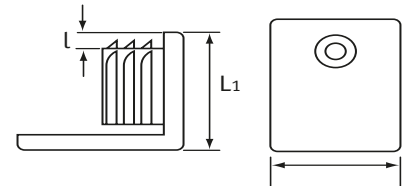
SR 1559

Black LDPE



SPLIT PACKS AVAILABLE

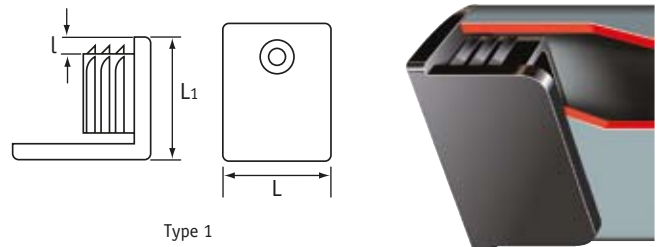
Part Number	Dimensions (mm)		Std Pack Qty
	L	l	
HIS200-RB	20	1.2	1000
HIS250-RB	25	1.2	1000
HIS300-RBKNP	30	1.2	1000



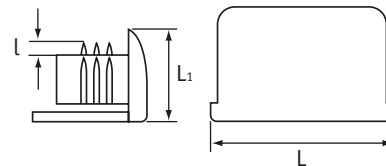
Stand-Off Rectangular Feet

SR 1559

Black LDPE



Type 1



Type 2

Part Number	Type	Dimensions (mm)		Std Pack Qty
		L x L1	l	
HIT300150-RB	1	30 x 15	1.2	1500
HIT400200-RB	1	40 x 20	1.2	1000
HIT500250-RB	1	50 x 25	1.2	500
HIT500300-RB	1	50 x 30	1.0-1.2	500
HITF400200-RB	2	40 x 20	1.2	500

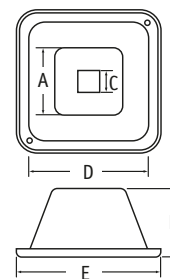
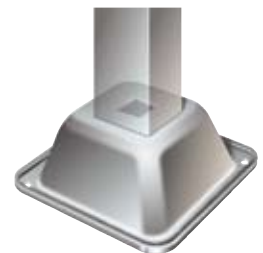
Pallet Feet

SR 1507

Pressed Self-colour Mild Steel

- Suitable for welding onto SHS tube
- Maximum post sizes assume SHS to be used
- Maximum post sizes will be less when sharp-cornered squares are used
- Maximum strength is achieved with maximum post size

Part Number	Dimensions (mm)					Steel Gauge	Max. Post Size	Std Pack Qty
	A	B	C	D	E			
462833	54	54	19	102	127	2.4mm	60mm	1

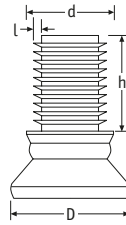


Nylon-Based Tiltserts

SR 1527

Black Nylon

- Articulating insert with nylon base for most surfaces



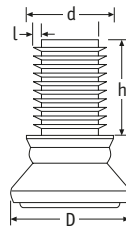
Part Number	Dimensions (mm)				Std Pack Qty
	D	d	h	l (gauge)	
465550	25.0	19.0	24.5	1.5 - 2.0	1250
465553	25.0	20.0	24.5	1.5 - 2.0	1000
465556	25.0	22.0	24.5	1.5 - 2.0	1000
465559	25.0	25.0	24.5	1.5 - 2.0	800
465562	25.0	28.0	24.5	1.5 - 2.0	800
465568	30.0	20.0	24.5	1.5 - 2.0	1000
465571	30.0	22.0	24.5	1.5 - 2.0	800
465574	30.0	25.0	24.5	1.5 - 2.0	800

Felt-Based Tiltserts

SR 1528

Black Nylon with Felt Base

- Articulating insert with felt base ideal for wooden floors



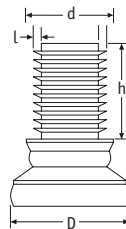
Part Number	Dimensions (mm)				Std Pack Qty
	D	d	h	l (gauge)	
465548	25.0	19.0	24.5	1.5 - 2.0	1500

Steel-Based Tiltserts

SR 1529

Black Nylon with Nickel-Plated Steel Base

- Articulating glide with steel base ideal for carpeted floors



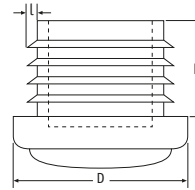
Part Number	Dimensions (mm)				Std Pack Qty
	D	d	h	l (gauge)	
465549	25.0	19.0	24.5	1.5 - 2.0	1250
465552	25.0	20.0	24.5	1.5 - 2.0	1250
465555	25.0	22.0	24.5	1.5 - 2.0	1000
465558	25.0	25.0	24.5	1.5 - 2.0	1000
465572	30.0	25.0	24.5	1.5 - 2.0	400

Felt Glides

SR 1587

Nylon with Felt Base

- Inserts with felt base to protect wooden floor surfaces



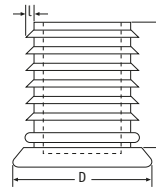
Part Number	Dimensions (mm)			Std Pack Qty
	D	l (gauge)	h	
465535	19.0	1.5 - 2.0	19.0	1750
465536	20.0	1.5 - 2.0	19.0	1750
465538	22.0	1.5 - 2.0	19.0	2500
465540	25.0	1.5 - 2.0	19.0	2250
465546	32.0	1.5 - 2.0	19.0	1250

Steel Glides

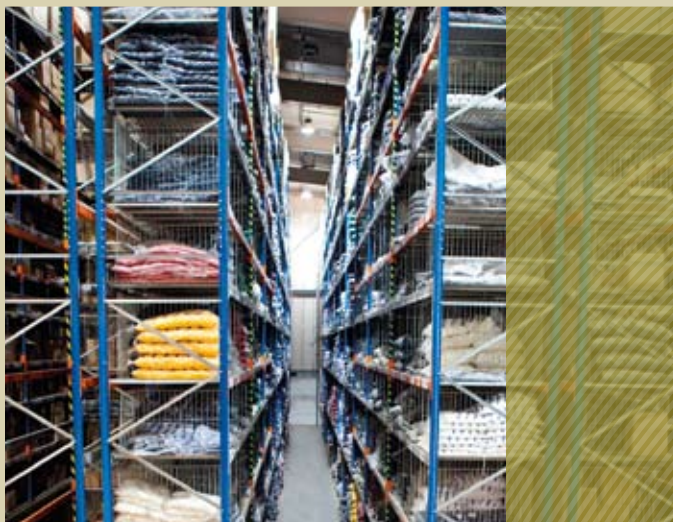
SR 1588

Nylon with Zinc-Plated Steel

- Steel-based inserts for smooth gliding action



Part Number	Dimensions (mm)			Std Pack Qty
	D	l (gauge)	h	
463871	30.0	1.0-2.5	19.0	900



Over 500 million parts in stock - Next day delivery

To order call +44 (0) 1865 844572 or visit www.mossplastics.com