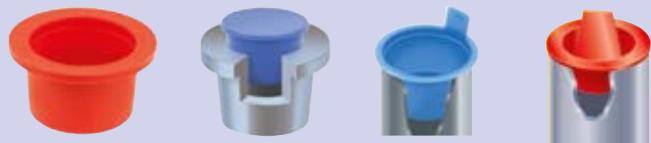


# Caps and Plugs

## Tapered Caps/Plugs



12-18



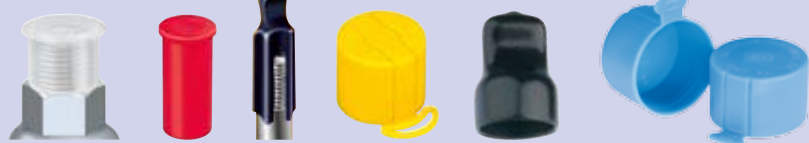
## Push Fit Plugs



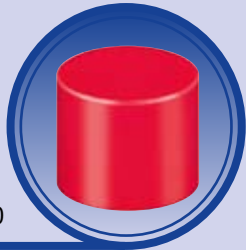
19-30



## Push Fit Caps



31-40



## Threaded Plugs



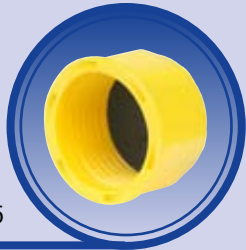
41-44



## Threaded Caps



45-46



# Protect against the elements!



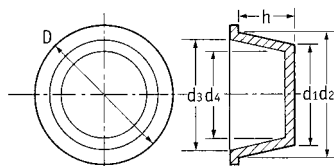
## Plastic bungs, plastic caps and plugs

Our plastic caps and plugs are suitable for a wide range of applications, from pipe and tube protection to radiator plugs and stud protection caps. Moss plastic caps and plugs are available in a variety of materials and colours, from durable PVC caps and LDPE plugs to thermoplastic rubber plugs, vinyl caps and finned plastic bungs.

## Tapered Caps/Plugs

SR 1000

Red LDPE



- Use as cap or plug
- Easy fitting and removal
- Over 140 sizes
- Provide excellent protection from damage, dirt, moisture and corrosion during storage and transportation

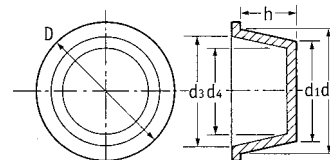
Part Number	Dimensions (mm)						Std Pack Qty
	d1	d2	d3	d4	D	h	
10836	2.9	4.6	3.0	1.3	7.9	9.5	10000
10991	4.4	6.1	4.5	2.8	9.5	9.5	10000
50222	4.7	8.5	5.7	2.5	11.7	22.5	10000
12419	5.6	7.0	5.4	4.0	10.5	8.4	10000
10727	6.2	7.6	5.9	5.0	11.1	9.5	10000
12482	7.7	9.3	7.0	5.5	12.7	8.0	10000
10549	7.7	9.1	7.7	6.3	12.7	9.5	10000
10289	8.4	10.0	8.2	6.9	13.5	9.5	10000
12562	8.6	10.3	8.2	7.0	13.7	9.8	10000
12483	9.0	10.7	8.8	7.5	13.9	11.5	10000
10325	9.4	10.8	9.3	7.7	14.0	8.5	10000
10750	10.0	11.8	10.0	8.5	15.0	9.5	10000
12420	10.6	12.2	10.0	8.6	15.6	9.8	10000
10114	10.9	12.3	10.7	9.1	15.9	9.3	10000
12421	11.2	14.0	12.1	9.2	17.5	18.5	5000
12422	11.3	12.9	10.9	9.4	16.3	8.5	10000
10421	11.3	13.2	11.6	9.8	17.0	11.0	10000
10174	11.5	13.0	11.5	10.0	16.7	9.5	10000
12901	12.0	14.8	12.0	10.5	17.5	11.0	5000
10237	12.1	13.9	12.3	10.6	17.5	11.0	5000
12563	12.5	14.0	12.0	10.5	17.5	8.9	5000
15137	12.8	15.1	13.2	10.7	18.5	23.1	4000
10438	13.6	15.3	13.7	12.1	19.0	11.2	5000
10342	14.2	16.0	14.4	12.7	19.0	12.1	5000
10424	14.7	17.0	15.4	13.2	20.6	12.7	5000
12481	14.9	16.4	14.5	13.5	21.0	11.5	5000
12423	15.5	17.1	15.0	13.4	20.6	8.5	5000
12564	16.1	17.6	15.5	14.5	21.0	8.5	5000
11139	16.4	18.3	16.9	14.3	22.2	12.3	5000
12196	16.6	18.5	16.5	14.5	21.9	13.0	6000
110197	17.1	19.4	17.8	15.5	22.0	13.0	6500
12197	17.2	20.2	18.0	15.5	24.2	18.0	4000
110198	17.5	20.1	18.5	15.9	24.0	14.5	5000
11088	17.7	19.6	17.3	15.2	22.2	12.7	5000
10394	17.8	20.0	18.3	16.4	23.8	13.4	5000
12424	18.3	21.4	19.3	16.4	25.4	17.5	4000
10208	18.5	20.9	19.3	17.1	24.6	14.3	5000
10728	19.0	21.5	19.7	17.6	25.8	14.3	4000
12925	19.4	22.5	21.3	18.0	26.5	19.0	3000
12425	20.5	23.2	21.2	18.5	27.2	17.5	3000
52071	21.2	23.2	21.7	19.3	27.3	12.3	4000
10676	21.3	23.2	21.5	19.2	27.0	15.9	3000
110200	22.0	24.8	23.2	20.4	29.0	17.0	3000
10376	22.0	25.0	23.0	20.5	28.5	15.9	3000
12565	22.5	25.5	23.3	20.0	28.9	17.8	3000
12426	22.7	24.9	22.7	20.8	27.0	12.0	3000
10136	23.4	26.4	24.4	21.4	29.3	17.5	2500
12427	24.0	26.9	25.0	21.9	31.0	18.0	2000
12567	24.6	29.5	27.5	22.5	34.0	27.5	1500
10732	24.7	27.7	26.1	23.2	32.0	19.0	2000
110201	25.2	29.2	27.7	23.7	33.0	19.0	1500
12999	26.6	29.7	28.3	24.6	31.6	26.3	1500
10250	28.0	30.9	29.0	26.5	35.3	19.0	2000
11173	29.2	31.2	30.3	28.0	34.7	12.7	2000

To Fit Thread Size	
As Cap	As Plug
M4	1/4" UNF
M6 1/4" UNF	M8, 5/16" UNF
M8	3/8" UNF M10
3/8" UNF	M12
1/8" BSP	1/4" BSP, 1/2" UNF
M12 7/16" UNF	M14 x 1.5 9/16" UNF
1/4" BSP, 1/2" UNF M14	M16 3/8" BSP M18 x 1.5
M16, 5/8" UNF	3/4" UNF
3/8" BSP	M20 x 1.5
M18 x 1.5, M18 x 2 3/8" BSP M18	1/2" BSP M20 1/2" BSP
3/4" UNF	M22 x 1.5 M22 x 1.5, 7/8" UNF
M20 x 2.5, 1/2" BSP M22 x 1.5 M22 7/8" UNF	M24 5/8" BSP 1" UNF
M24	3/4" BSP, M27, M26
M25, 1" UNF	M28, M30, 1 1/8" UNF
3/4" BSP M27, M28 M22 x 2	7/8" BSP M30 x 1.5

CONTINUED ON NEXT PAGE

## Tapered Caps/Plugs *CONTINUED*

SR 1000



Part Number	Dimensions (mm)						Std Pack Qty
	d1	d2	d3	d4	D	h	
10272	30.0	32.6	30.7	27.5	36.7	15.2	2000
12428	30.5	33.3	31.1	28.4	37.0	14.5	2000
12568	31.1	34.3	32.0	29.3	38.1	17.5	1500
10154	31.1	34.4	32.8	29.8	38.1	19.0	1500
12569	31.6	36.3	34.0	29.8	40.2	24.1	1000
11167	33.3	34.4	32.8	31.4	38.1	9.5	2500
10181	33.3	37.2	35.6	31.7	41.6	22.2	1000
12480	33.9	38.3	36.5	31.9	42.3	24.5	1000
10838	33.9	37.3	35.8	32.0	42.2	12.3	2000
12198	34.9	36.4	35.2	33.1	42.7	8.2	2500
12570	35.9	40.2	37.5	33.2	44.1	24.5	1000
15138	36.3	38.3	37.0	34.6	42.3	12.0	1500
10491	36.9	40.6	39.0	35.0	44.0	22.5	1000
11115	38.6	40.6	39.0	37.1	44.5	12.7	1500
10485	39.6	42.7	41.1	38.2	47.6	18.5	1000
12429	40.8	44.7	41.8	37.7	49.0	24.0	500
10252	41.4	44.8	43.0	39.7	49.2	19.0	1000
11172†	42.5	44.8	43.0	40.7	50.7	12.6	1000
15139	43.4	48.5	47.0	42.0	53.3	24.5	600
10812	44.1	46.7	45.7	42.8	49.8	18.4	800
110204	44.4	47.7	46.1	42.8	51.0	19.0	1500
10168	45.2	49.0	47.0	43.7	53.4	24.5	600
10439	45.9	46.3	45.0	44.3	50.8	9.5	1500
15136	46.0	50.0	48.0	44.3	54.0	24.8	500
12430	47.2	51.9	48.7	44.5	55.8	24.0	500
11131	47.5	50.3	49.0	45.2	54.0	25.0	500
10820	48.0	52.7	50.7	46.3	57.1	25.4	500
10086	48.6	51.2	48.9	46.7	55.5	18.7	500
12746	49.8	54.0	52.0	47.5	58.0	24.3	500
10624	51.1	54.4	52.0	47.7	57.0	25.0	500
10935	51.5	54.1	52.0	49.6	58.3	18.5	500
11047	53.5	57.0	55.3	51.2	62.4	25.1	400
12431	54.0	58.4	55.0	50.8	62.4	24.5	400
10616	55.0	61.0	59.0	52.2	65.0	25.0	400
11168	55.4	58.8	57.2	53.7	65.0	25.1	400
11169	57.5	57.6	56.1	55.2	63.6	12.8	700
11100	59.3	67.3	64.1	56.7	70.3	31.7	300
10249	59.6	62.6	61.0	57.0	66.7	24.6	300
11075	62.0	66.4	64.3	59.0	71.0	28.0	300
10292	63.3	69.8	67.8	61.5	73.0	25.4	400
10399	64.5	67.3	65.6	62.1	70.6	15.8	400
11064	68.1	70.9	69.3	66.3	74.6	19.0	400
10302	70.0	75.8	74.0	68.1	79.4	25.4	300
10617	74.0	77.0	73.9	71.5	82.5	18.7	300
10550	74.0	76.8	73.4	70.0	80.0	24.4	600
11023	76.8	82.2	80.8	74.8	85.7	25.4	500
11170	77.1	80.7	78.2	74.8	85.7	19.0	300
11037	80.0	86.1	82.0	77.5	89.8	25.1	500
10353	84.2	90.8	88.3	82.7	94.5	28.0	500

To Fit Thread Size	
As Cap	As Plug
M30	M33, 1" BSP
7/8" BSP	1 5/16" x 12 UNF
	1 3/8" UNF, M36
M33, M32, 1 1/4" UNF	M36
1 5/16" BSP	1 5/16" BSP
1" BSP	M38, 1 1/8" BSP
1 3/8" UNF	1 1/8" BSP
M38	1 1/4" BSP
1 1/2" UNF	M42
M39, M40	
1 1/4" BSP	M45 x 2
M45 x 1.5/2/3	M48 x 2, 1 7/8" JIC/UNF, 1 1/2" BSP
1 3/8" BSP	M48, 1 1/2" BSP
	M48
M48, 1 1/2" BSP	M52
1 3/4" BSP	M56, M55
M58	2" BSP
2" BSP	
	M76, M75, 2 1/2" BSP
2 1/2" BSP	
3" BSP	

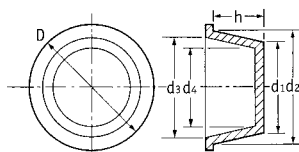
\* Yellow LDPE

† Includes six ribs on shank for extra secure fit when used as a plug

CONTINUED ON NEXT PAGE

Tapered Caps/Plugs *CONTINUED*

SR 1000



Part Number	Dimensions (mm)						Std Pack Qty
	d1	d2	d3	d4	D	h	
11171	85.3	88.0	85.5	82.9	92.0	19.0	250
12572	87.5	93.6	90.5	84.3	96.7	34.3	250
10304	88.1	93.3	89.9	85.1	96.5	28.6	300
10253	92.1	97.0	94.0	88.3	100.0	32.0	300
10697	93.5	100.3	97.8	89.9	107.5	26.5	400
464166††	96.5	102.0	101.0	94.0	110.0	31.0	200
12573	94.5	100.6	97.0	91.0	103.6	34.5	100
12199	98.0	102.0	98.5	94.8	107.2	24.7	400
10551	98.2	103.3	99.0	95.0	106.0	28.8	300
110785	101.0	107.0	103.0	98.0	109.0	28.6	300
10688	101.9	107.5	103.0	98.0	109.0	28.6	300
10771	106.7	111.7	107.4	107.4	113.3	28.6	250
10455	108.0	114.1	111.6	106.4	118.5	35.2	250
462570	109.0	113.0	111.0	106.0	123.0	27.0	175
10837	110.0	115.0	109.0	105.0	118.5	28.0	250
12574	111.5	117.6	115.0	107.5	122.0	35.0	250
10133	112.1	114.3	109.8	107.5	116.8	28.6	250
10355	124.0	128.0	125.0	121.0	134.0	23.0	150
12575	129.0	135.1	132.0	124.0	139.5	36.5	150
462571	133.0	137.0	134.2	130.2	143.0	22.0	150
12576	139.5	145.6	140.0	135.0	150.0	36.5	150
10356	146.8	151.0	148.6	142.8	159.5	33.0	100
39649	153.7	161.5	160.0	152.0	178.9	29.6	135
12577	156.0	162.3	158.8	151.8	167.3	36.7	100
39196*	202.9	203.8	198.8	198.0	218.7	32.7	100
462572	203.5	208.5	205.9	200.9	216.0	24.0	60
39666	216.0	223.6	223.0	213.0	241.5	29.1	100
39195*	252.2	257.8	247.8	247.2	272.5	33.8	50
39149*	304.2	308.4	299.4	299.2	322.6	33.9	30

**Order Guide**

*When used as a cap, the d4 dimension should be at least 0.5mm per centimetre less than the diameter to be capped. Diameters over 300mm may require more interference.*

*When used as a plug, the d2 dimension should be at least 0.5mm per centimetre larger than the opening. Diameters over 30mm may require more interference.*

\* Black LDPE. † Blue LDPE. †† Natural LDPE.

**Largest Range** of caps and plugs available for next day delivery in Europe

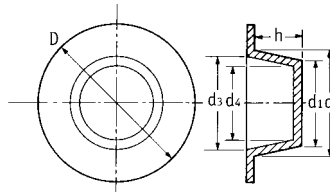


## Tapered Caps/Plugs - Large Flange Range

SR 1001

Red LDPE

- Complement SR 1000 caps and plugs
- Large flange for greater protection and easy removal



Part Number	Dimensions (mm)						Std Pack Qty
	d1	d2	d3	d4	D	h	
12432	7.6	9.3	7.7	6.3	18.4	9.5	10000
12433	10.7	12.3	10.7	9.1	22.0	9.5	10000
10420	11.3	13.2	11.6	9.8	29.0	11.0	10000
110831	11.4	12.4	10.5	9.5	15.0	7.0	2000
12434	13.5	15.5	13.2	11.4	30.0	9.5	5000
18349	13.6	15.4	13.8	12.2	22.2	11.1	8000
18351	14.7	16.9	15.4	13.2	25.4	12.7	6000
12435	17.5	20.0	18.5	16.1	34.9	14.3	3000
18356	19.1	21.5	19.9	17.6	38.1	14.3	2500
12436	21.9	25.0	22.0	18.9	48.0	17.5	1500
12134*	22.5	25.3	23.5	20.8	55.4	17.3	3000
18357	24.7	27.7	26.1	23.2	38.1	19.1	1500
12437	30.4	33.6	30.7	27.8	47.3	15.2	1400
18360	31.1	34.4	32.8	29.8	47.6	19.1	1000
12438	33.3	37.2	35.6	32.0	50.8	22.2	800
12439	36.9	40.6	39.0	35.0	54.2	22.5	800
18362	41.4	44.8	43.0	39.7	57.2	19.0	700
12441	47.2	51.9	48.7	44.5	72.0	24.0	400
18366	48.3	52.7	50.7	46.3	63.5	25.4	1200
18368	51.5	54.1	52.0	49.6	66.7	18.5	500
18373	55.0	61.0	59.0	52.5	76.7	25.0	300
18374	62.0	66.4	64.3	59.0	83.0	28.0	250

To Fit Thread Size	
As Cap	As Plug
1/8" BSP	1/4" BSP, 1/2" UNF
1/4" BSP, 1/2" UNF	M16, 5/8" UNF M18
M18	1/2" BSP
M30	M27, M30
M33, M32, 1 1/4" UNF	M33, M32, 1" BSP M35
M35, 1" BSP	M36, M38, 1 1/8" BSP 1 1/2" UNF
M38, 1 1/8" BSP	M39, M40, 1 1/4" BSP
M42, 1 1/4" BSP	M45
M48, 1 3/4" BSP	M52

\* Supplied with vent hole.



Buy any quantity!

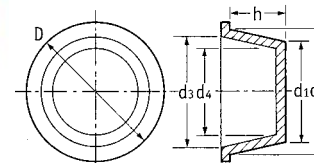
**SPLIT PACKS  
AVAILABLE**

## Tapered Caps/Plugs-Blue Series

SR 1111

Blue LDPE

- Use as cap or plug
- Easy fitting and removal
- Provide excellent protection from damage, dirt, moisture and corrosion during storage and transportation



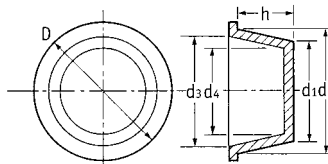
Part Number	Dimensions (mm)						Std Pack Qty
	d1	d2	d3	d4	D	h	
1	2.9	4.6	3.0	1.3	7.9	10.3	5000
15	3.5	4.6	3.0	1.3	7.9	6.4	5000
2	4.5	6.1	4.5	2.8	9.5	9.5	50000
3	5.3	6.8	4.9	3.2	9.5	9.5	50000
5	6.1	7.7	6.1	4.5	11.9	9.5	35000
6	6.7	8.5	7.0	5.2	11.9	9.5	30000
7	7.6	9.3	7.7	5.9	13.5	9.5	25000
7-S	8.4	9.3	7.7	6.8	12.7	5.6	40000
8	8.4	10.1	8.4	7.0	14.3	9.5	22500
9	9.1	10.9	9.3	7.6	15.1	9.5	20000
10	9.9	11.7	10.1	8.3	15.9	9.5	15000
11	10.7	12.3	10.7	9.0	15.1	9.5	17000
12	11.4	13.0	11.4	9.8	15.9	10.3	12500
13	12.5	13.9	12.3	10.4	18.3	12.7	9000
13-SP	12.1	13.8	12.2	10.4	18.3	7.9	15000
13-W	12.1	13.9	12.3	10.4	22.2	12.7	7000
14	12.7	14.4	12.8	11.1	19.1	11.1	9000
16	13.5	15.8	14.1	11.9	19.1	11.8	7500
17	14.0	16.1	14.4	12.3	19.8	12.7	7500
18	15.0	17.2	15.4	13.2	22.2	13.5	5000
20	15.5	17.7	16.1	13.9	21.4	12.7	6000
21	16.3	18.5	16.9	14.6	22.2	12.7	5000
22	17.2	19.2	17.5	15.6	22.2	15.9	4000
23	17.5	19.9	18.4	15.9	23.8	15.9	4000
26	18.4	21.0	19.3	16.8	25.4	12.7	4000
26-L	18.4	21.0	19.3	16.8	24.6	15.0	8000
27	19.1	21.5	19.7	17.4	26.2	15.9	7000
28	20.4	23.1	21.5	18.4	27.8	19.1	5000
29	20.8	23.7	21.6	19.2	28.6	14.6	5500
30	21.7	24.7	23.0	19.5	28.6	19.1	4500
31	22.1	24.8	23.4	20.4	28.6	15.9	5000
35	22.7	26.4	24.8	21.1	29.4	19.1	4500
38	24.9	26.5	25.0	22.3	31.8	12.7	2500
40	24.5	27.7	26.0	22.9	31.8	19.1	3500
41	25.5	29.1	27.4	23.8	33.3	19.1	3500
42	28.2	31.2	30.0	26.4	38.5	19.1	2500
44	30.0	32.6	30.9	28.1	36.5	19.1	2500
45	31.1	34.3	32.9	29.5	38.1	19.1	2500
46	31.4	34.3	32.9	29.0	36.5	19.1	2500
47	32.8	34.6	33.02	31.2	38.1	19.1	2000
48	32.8	37.0	35.3	31.2	41.3	25.4	1500
49	33.3	37.3	35.6	31.7	41.3	19.1	2000
51	34.1	38.5	36.8	32.6	44.5	23.8	1500
53	36.8	40.6	39.0	35.2	44.5	19.1	2000
54	38.6	40.7	39.0	37.0	45.2	19.1	1700
K-5	38.7	38.7	37.7	36.7	44.5	12.7	2500
55	39.6	42.5	41.2	38.0	47.6	19.1	1500
56	40.8	44.5	42.8	39.8	49.2	19.1	1500
57	44.1	47.5	46.2	42.6	51.6	19.1	1200
58	45.9	49.7	48.1	44.3	54.0	25.4	900
59	45.7	46.4	44.7	44.1	51.6	12.7	2000
60	46.9	51.3	49.2	45.3	54.0	25.4	1000
62	48.3	53.0	51.2	46.7	57.2	25.4	850
63	50.3	55.1	53.6	48.6	57.2	25.4	800

CONTINUED ON NEXT PAGE

## Tapered Caps/Plugs-Blue Series *CONTINUED*

SR 1111

Blue LDPE



Part Number	Dimensions (mm)						Std Pack Qty
	d1	d2	d3	d4	D	h	
65	51.2	54.5	52.9	49.7	58.7	19.1	1000
66	52.4	57.2	55.3	50.8	61.9	26.2	700
67	54.8	59.8	58.1	52.9	66.7	25.4	600
68	56.5	57.9	56.4	54.6	63.5	12.7	1200
70	54.1	61.6	60.2	51.9	63.5	25.4	700
71	58.4	63.1	61.0	56.8	66.7	25.4	600
73	60.8	66.2	64.5	59.2	66.7	25.4	600
74	61.7	67.2	65.5	61.5	69.9	19.1	700
75	58.7	67.3	65.7	57.0	69.9	25.4	750
76	62.4	69.9	68.2	60.8	73.0	25.4	600
77	65.0	68.3	66.7	63.5	73.0	19.1	700
78	67.2	71.3	69.2	65.5	76.2	12.7	1000
81	69.1	76.2	74.9	66.7	79.4	25.4	500
82	72.4	75.7	74.2	70.7	82.6	19.1	500
83	76.1	80.2	78.7	74.0	85.7	12.7	750
85	75.7	82.4	80.4	73.7	85.7	25.4	400
86	78.5	85.5	83.4	76.3	88.9	25.4	400
87	84.3	87.6	85.6	82.3	92.1	12.7	500
88	82.2	90.8	88.8	80.2	100.0	25.4	300
89	88.0	91.4	89.2	86.5	98.4	22.4	350
K-851	90.2	95.3	93.4	88.3	101.6	25.4	250
90	93.4	96.5	94.7	91.6	101.6	19.1	300
91	96.5	99.7	97.7	94.4	104.8	17.5	300
92	99.5	103.4	101.1	96.8	111.1	19.8	250
93	102.4	106.4	104.4	100.3	114.3	19.1	250
94	107.1	112.9	111.3	105.0	123.8	25.4	200
95	110.9	117.0	114.3	109.0	127.0	25.4	200
1100	124.7	129.3	127.3	122.7	139.7	26.2	250
1110	126.8	132.1	129.5	125.0	143.0	26.2	250
101	138.9	142.8	140.7	136.9	155.7	25.4	100
103	143.3	149.2	147.2	140.7	158.8	25.4	100
39665	141.0	150.0	148.0	138.0	164.1	25.4	140
FPL-6*	152.0	153.4	-	-	167.9	32.5	150
104	152.7	157.0	154.9	150.4	168.2	25.4	90
106	162.6	166.6	164.6	160.8	176.3	22.9	100
108	167.9	170.4	168.4	165.9	182.6	38.9	100
K-436	174.8	178.6	176.5	172.7	194.8	13.5	300
110	179.1	180.9	178.8	177.0	193.8	26.2	100
112	186.4	194.3	192.0	184.4	201.7	26.2	100
114	194.6	199.1	197.1	192.5	206.3	26.2	100
118	207.2	212.1	209.6	204.5	222.3	35.7	50
120	213.4	218.4	215.9	210.8	228.6	35.7	50
124	220.2	221.7	219.1	217.2	231.9	38.9	50
126	230.1	237.7	234.7	225.8	250.4	45.2	50
130	274.1	281.9	277.1	268.0	294.6	45.2	40
132	282.2	291.1	286.3	273.8	303.8	51.6	40
133	303.0	319.0	313.7	297.2	331.5	51.6	30
134	324.9	338.8	328	318.3	346.5	51.6	30
136	336.6	345.4	340.4	330.2	358.1	51.6	30

\* Black

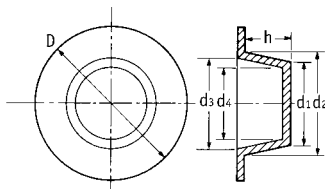


## Tapered Caps / Plugs - Large Flange Range - Blue Series

SR 1115

Blue LDPE

- Large flange for greater protection and easy removal



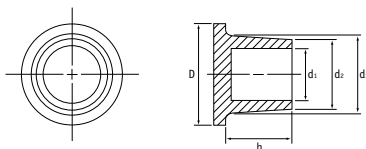
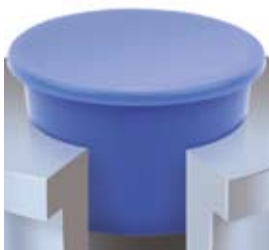
Part Number	Dimensions (mm)						Std Pack Qty
	d1	d2	d3	d4	D	h	
LF2A	4.4	6.1	4.5	2.8	14.3	11.8	22000
LF-3	6.0	7.4	6.2	3.7	12.3	10.2	30000
LF-6	9.3	10.6	9.0	7.6	18.8	10.2	12000
LF-7	10.1	11.4	9.7	8.3	19.8	10.2	10000
LF-10	12.2	13.9	12.5	10.4	22.1	11.7	7000
LF-11X	14.4	16.0	14.7	12.7	24.1	12.5	5000
LF-12X	15.5	17.5	16.1	13.9	26.2	13.4	4500
LF-13	16.0	18.4	16.9	14.2	27.0	13.4	5000
LF-15X	18.4	20.6	19.4	16.8	29.0	15.0	3000
LF-17	20.8	23.4	22.0	18.8	31.8	15.8	2300
LF-19	24.1	25.9	24.3	22.2	34.1	18.2	4000
LF-28	43.9	48.0	46.4	41.9	58.7	18.9	1100

## Covered Tapered Plugs

SR 1114

Blue LDPE

- Designed for use with BSP / NPT tapered threaded fittings



Part Number	BSP / NPT Thread	Dimensions (mm)					Std Pack Qty
		d1	d2	d3	D	h	
EN-1/4"	1/4"	9.0	10.7	12.3	15.5	7.1	15000
EN-3/8"	3/8"	12.7	14.0	16.3	19.5	12.7	6500
EN-1/2"	1/2"	15.9	17.5	19.9	23.0	12.7	4000
EN-3/4"	3/4"	20.6	22.1	24.8	27.8	15.9	2500
EN-1"	1"	26.2	27.7	30.5	34.1	16.7	1500

**Free Samples**  
Next day delivery

To order call  
+44 (0) 1865 844572  
or visit [www.mossplastics.com](http://www.mossplastics.com)



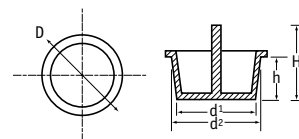
## Centre Pull Plugs

### SR 1068

#### Red LDPE

- Centre pull-tab for easy fit and removal
- Excellent protection from damage, dirt, moisture and corrosion during production, storage and transportation

Part Number	To Fit Thread Size			Dimensions (mm)					Std Pack Qty
	Metric	UNF	BSP	d1	d2	D	h	H	
110029	M8	5/16"	-	6.2	7.7	11.1	9.5	20.5	10000
CP-6*	-	-	-	6.8	8.5	11.9	10.3	15.9	25000
110030	M10	7/16"	1/8"	8.4	10.0	13.5	9.5	20.5	10000
110031	-	3/8"	-	9.5	10.8	14.0	9.5	20.5	10000
CP-9*	-	-	-	9.2	10.9	15.1	9.5	19.1	14000
CP-10*	-	-	-	10.2	11.8	15.9	9.5	19.1	12000
110032	M12	1/2"	1/4"	10.9	12.3	15.9	9.5	20.3	10000
CP-12*	-	-	-	11.4	13.0	16.7	10.3	14.3	10000
110033	M14	9/16"	-	11.7	13.7	17.2	11.0	22.0	5000
CP-14*	-	-	-	12.7	14.4	18.3	11.9	20.6	7500
110034	M16	5/8"	3/8"	14.2	16.0	19.0	11.9	22.9	5000
CP-18*	-	-	-	14.7	17.0	20.6	13.5	19.1	5500
CP-19*	-	-	-	15.5	17.7	21.3	13.5	19.8	5000
110035	M20	3/4"	-	16.4	18.3	22.2	12.3	23.5	5000
110036	-	13/16"	1/2"	17.8	20.0	23.8	13.7	24.5	5000
CP-24*	-*	-	-	18.5	21.0	25.4	15.0	21.3	5000
110037	M24	7/8"	5/8"	21.3	23.2	27.0	15.9	26.9	3000
CP-31*	-	-	-	22.1	24.7	28.5	19.1	25.4	4000
10418	-	1"	-	22.5	25.5	28.9	17.8	29.0	2500
110038	M28, M30	1 1/8"	-	24.7	27.7	32.0	19.0	30.0	2000
CP-37*	-	-	-	24.6	27.7	31.8	19.8	26.2	2500
CP-40*	-	-	-	26.1	29.1	34.0	19.1	25.4	2500
CP-42*	-	-	-	27.8	31.0	35.8	19.8	25.4	2500
CP-44*	-	-	-	29.2	32.7	39.4	19.1	25.4	2000
CP-47*	-	-	-	32.8	33.2	38.1	19.8	25.4	1800
CP-49*	-	-	-	33.3	37.2	41.2	19.1	25.4	1800
CP-51*	-	-	-	34.1	38.8	44.5	22.4	25.4	1500
CP-55*	-	-	-	36.9	40.7	44.5	19.1	25.4	1500
CP-56*	-	-	-	41.0	44.1	48.4	18.3	28.6	1000
CP-57*	-	-	-	45.9	49.2	54.9	25.4	31.8	1000
110039†	M52	-	-	48.2	52.7	57.1	25.4	26.4	300
110040†	M58, M60	-	2"	55.0	61.0	65.0	25.0	26.0	400
110041†	M62	-	-	59.3	67.3	70.6	30.7	31.5	150
110042†	-	-	-	67.4	70.2	74.6	25.0	26.0	300



† Pull-tab does not extend above overall height.  
\* Orange LDPE

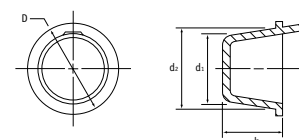
## Side Pull Tabs

### SR 1110

#### Blue LDPE

- Use as Cap or Plug
- Side pull-tab for easy removal

Part Number	Dimensions (mm)				Std Pack Qty
	d1	d2	D	h	
P-7	7.6	9.3	13.5	9.5	25000
P-8	8.4	10.1	14.3	9.5	20000
P-11	10.7	12.3	15.1	9.5	15000
P-16	13.5	15.8	19.1	12.7	7000
P-17	14.0	16.1	19.8	12.7	7000
P-23	17.5	19.9	23.8	15.9	3500
P-26	20.4	23.2	26.9	16.5	5000
P-31	22.1	24.8	28.6	15.9	2500
P-33	23.2	26.4	29.4	18.3	3800
P-40	24.5	27.7	31.8	19.8	3000
P-41	25.3	29.1	33.3	19.8	2500
P-42	28.2	31.2	38.5	19.1	2500
P-44	29.6	32.4	35.7	19.1	2500
P-53	36.8	40.6	44.5	19.1	2000
P-55	39.6	40.6	47.6	19.1	1500
P-57	41.5	44.5	49.3	19.1	1000
P-59	45.7	46.4	51.6	12.7	2000
P-61	45.2	49.5	53.9	25.4	1000
P-63	46.8	50.8	53.9	25.4	1000
P-65	48.2	52.7	57.2	25.4	1000
P-68	56.7	57.4	63.5	12.7	1000

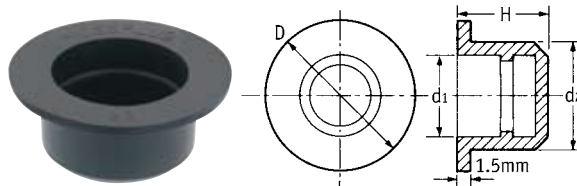


## Moss Plugs

SR 1013

Black PVC or Green Vinyl

- Highly resistant to shredding
- Green vinyl can be used with oils and greases



Part Number		Dimensions (mm)				Std Pack Qty
Black PVC	Green Vinyl	d1	d2	D	H	
10874	-	1.6	3.2	7.0	9.0	10000
12665	-	3.2	5.0	11.0	12.0	10000
12666	11806	3.1	6.0	12.0	12.0	5000
12667	11817	4.5	7.0	13.0	12.0	5000
12668	11808	4.9	8.0	14.0	12.0	10000
12669	11829	6.1	9.0	15.0	12.0	5000
12670	11807	7.2	10.0	16.0	12.0	5000
12671	11824	8.2	11.0	17.0	12.0	10000
12672	11809	9.2	12.0	20.0	12.0	8000
12673	11822	10.2	13.0	21.0	14.0	8000
12674	11813	11.0	14.0	22.0	14.0	7000
12675	11830	12.2	15.0	23.0	14.0	6000
12677	11820	12.9	16.0	24.0	14.0	6000
12678	11811	14.0	17.0	27.0	14.0	5000

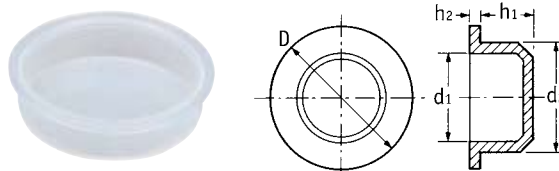
Part Number		Dimensions (mm)				Std Pack Qty
Black PVC	Green Vinyl	d1	d2	D	H	
12679	11827	15.0	18.0	28.0	14.0	4000
12680	11818	16.1	19.0	29.0	14.0	2000
12681	11812	17.2	20.0	30.0	14.0	2000
12683	11823	18.0	21.0	31.0	14.0	3000
12684	11828	19.0	22.0	32.0	14.0	1500
12685	11814	20.1	23.0	33.0	14.0	1500
12686	11810	21.6	24.0	34.0	16.0	2500
12687	11816	22.2	25.0	35.0	16.0	2000
12688	11819	23.5	26.0	36.0	16.0	2000
12689	11821	23.6	27.0	37.0	16.0	2000
12690	11825	25.2	28.0	38.0	16.0	2000
12692	11826	27.9	30.0	40.0	16.0	1000
12693	12078	36.4	40.0	50.0	22.0	700
12694	-	43.2	47.0	57.0	22.0	500

## Parallel Protection Plugs

SR 1015

Natural LDPE

- Popular general-purpose plug



Part Number	Dimensions (mm)					Std Pack Qty
	d1	d2	D	h1	h2	
12150	3.5	5.0	9.0	5.0	1.0	10000
12151	3.6	5.5	9.5	5.0	1.0	10000
12152	4.5	6.0	10.0	5.5	1.0	10000
12153	5.0	6.5	10.5	5.5	1.0	10000
12154	5.5	7.0	11.0	5.5	1.0	10000
12155	5.6	7.5	11.5	5.5	1.0	10000
12156	6.5	8.0	12.0	5.5	1.0	10000
12157	7.0	8.5	12.5	6.0	1.0	10000
12158	7.5	9.0	13.0	6.0	1.0	10000
12159	8.0	9.5	13.5	6.0	1.0	10000
12160	8.5	10.0	14.0	6.5	1.0	10000
12161	9.0	10.5	14.5	6.5	1.0	10000
12162	9.5	11.0	15.0	6.5	1.0	10000
12163	10.0	11.5	15.5	6.5	1.0	10000
12164	10.5	12.0	15.8	6.5	1.0	5000
12165	11.0	12.5	16.5	6.5	1.0	5000
12166	11.0	13.0	17.0	6.5	1.25	5000
12167	11.5	13.5	17.5	6.5	1.25	5000
12168	12.0	14.0	18.0	6.5	1.25	5000
12169	12.5	14.5	18.5	7.0	1.25	5000
12170	13.0	15.0	19.0	7.5	1.25	5000
12171	13.5	15.5	19.5	7.5	1.25	5000
12172	14.0	16.0	20.0	7.5	1.25	5000
12173	14.5	16.5	20.5	7.5	1.25	5000
12174	15.0	17.0	21.0	7.5	1.25	5000
12175	15.5	17.5	21.5	7.5	1.25	5000
12176	16.0	18.0	22.0	8.5	1.25	5000
12177	16.5	18.5	22.5	8.5	1.25	5000
12178	17.0	19.0	23.0	8.5	1.25	5000
12179	17.5	19.5	23.4	8.5	1.25	5000
12180	18.0	20.0	24.0	9.0	1.25	5000
12181	18.5	20.5	24.5	9.0	1.25	5000
12182	19.0	21.0	25.0	9.0	1.25	5000
12183	19.5	21.5	25.5	9.0	1.25	5000
12184	22.0	22.0	26.0	9.0	1.25	5000
12185	20.0	22.5	26.5	9.0	1.5	2500
12186	20.5	23.0	27.0	9.0	1.5	2500
12187	21.0	23.5	27.5	9.0	1.5	1250

Part Number	Dimensions (mm)					Std Pack Qty
	d1	d2	D	h1	h2	
12188	21.5	24.0	28.0	9.0	1.5	2500
12189	22.0	24.5	28.5	9.0	1.5	2500
12190	22.5	25.0	29.0	9.0	1.5	2500
12191	23.5	26.0	30.0	10.0	1.5	2000
465656	24.7	26.6	30.6	8.5	1.4	1000
12192	24.5	27.0	31.0	10.0	1.5	2000
465657	26.0	27.7	31.6	8.5	1.3	1000
12193	25.5	28.0	32.0	10.0	1.5	2000
12194	26.5	29.0	33.0	10.0	1.5	1500
12195	27.5	30.0	34.0	10.0	1.5	1500
465658	29.9	31.1	35.0	8.5	1.3	1000
465659	30.2	31.4	35.5	8.5	1.4	1000
10352	29.0	31.5	35.5	10.0	1.5	1500
465660	30.2	31.8	35.8	8.5	1.4	1000
462590	30.5	32.5	37.0	11.0	1.0	1500
465661	31.7	33.2	37.2	8.5	1.4	1000
465662	34.4	36.0	40.2	8.5	1.4	1000
465663	37.5	39.1	43.1	8.5	1.4	1000
465664	38.0	39.5	46.2	8.8	1.4	1000
462591	37.5	39.5	42.0	11.0	1.0	1000
465665	38.9	40.1	46.8	8.6	0.7	1000
465666	39.1	40.7	47.5	8.7	1.5	1000
465670*	38.3	40.5	54.0	9.6	1.3	750
465667	41.4	42.6	46.4	5.8	1.5	1000
465668	44.5	46.1	52.7	8.5	1.4	1000
462592	45.5	47.0	52.0	10.0	1.0	1000
465672	49.5	51.1	60.0	10.2	1.1	750
465673	56.5	58.2	67.0	8.7	1.1	750
465674	58.8	60.0	61.7	10.2	0.7	750
465675	64.6	66.2	75.2	8.7	1.1	750
465676	71.8	73.6	82.5	8.7	1.2	750
465677	79.4	81.2	90.2	8.7	1.2	500
465678	83.2	85.1	93.8	8.7	1.4	500
462596	84.0	86.0	90.0	10.0	1.25	500
465679	84.4	86.6	98.6	9.0	1.3	500
465680	99.5	101.8	113.8	9.0	1.4	500

\* Style variation with flange

## Barrel Plugs

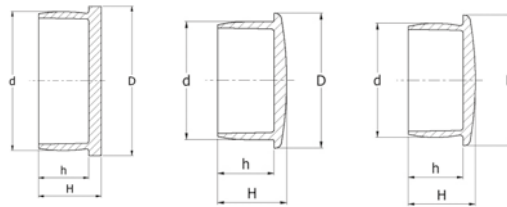
SR 1011

Natural / Black LDPE

- General-purpose plug for a wide range of applications
- Quick to fit and remove
- Convex sides to ensure secure fit

**EXTENDED RANGE**

**SPLIT PACKS AVAILABLE**



Type 1

Type 2

Type 3

Part Number	Colour	Type	To Fit Thread Size	Dimensions (mm)				Std Pack Qty
				d	D	h	H	
055003200003	Natural	2	-	3.3	12.0	6.0	7.7	1000
055004400003	Natural	2	-	4.4	9.0	5.2	6.5	1000
055004700003	Natural	2	-	4.6	7.0	5.0	6.2	1000
055005200003	Natural	2	-	5.1	11.0	6.0	8.0	1000
10876	Natural	2	-	5.4	12.0	7.5	9.5	10000
494365	Black	2	-	5.4	12.0	7.5	9.5	500
465681	Natural	1	-	6.3	9.6	4.0	5.1	1000
055007000003	Natural	2	-	7.2	11.0	6.5	8.4	500
055007300003	Natural	2	-	7.3	11.0	6.0	8.0	500
12135	Natural	1	M8 X 1, 5/16 X 24, UNF	7.3	14.0	6.0	8.0	10000
494366	Black	1	M8 X 1, 5/16 X 24, UNF	7.3	14.0	6.0	8.0	500
055007500003	Natural	2	-	7.5	11.0	4.5	6.2	500
055008000003	Natural	2	-	8.0	12.0	7.5	9.5	500
12136	Natural	1	-	8.4	14.0	6.0	8.0	10000
494367	Black	1	-	8.4	14.0	6.0	8.0	500
055008500003	Natural	2	-	8.5	12.0	8.0	9.7	500
055008800003	Natural	2	-	8.8	11.5	8.0	9.5	500
055008822003	Black	2	-	8.8	11.5	8.0	9.5	500
055009300003	Natural	3	-	9.3	12.0	9.0	11.5	500
055009322003	Black	3	-	9.3	12.0	9.0	11.5	500
10905	Natural	1	M10	9.3	14.0	4.5	6.5	6000
494368	Black	1	M10	9.3	14.0	4.5	6.5	500
12978	Natural	1	1/8" BSP, M10 X 1.5	9.3	16.0	6.8	8.3	6000
055010100003	Natural	2	-	10.0	12.0	4.0	5.7	500
055010000003	Natural	2	-	10.0	15.0	9.0	11.2	500
055010700003	Natural	3	-	10.7	14.8	9.0	11.4	500
055010722003	Black	3	-	10.7	14.8	9.0	11.4	500
12977	Natural	1	M10 X 1.5	10.7	14.0	6.0	8.2	6000
494369	Black	1	M10 X 1.5	10.7	14.0	6.0	8.2	500
465682	Natural	1	M12 X 1.25, M12 X 1	11.3	14.4	5.5	9.5	1000
110478	Natural	1	-	11.9	16.0	7.0	9.0	5000
494370	Black	1	-	11.9	16.0	7.0	9.0	500
10906	Natural	1	M14 X 1.5	12.3	16.0	7.0	9.0	5000
494371	Black	1	M14 X 1.5	12.3	16.0	7.0	9.0	500
055012500003	Natural	3	-	12.8	17.5	9.0	11.9	500
12979	Natural	1	M14 X 1.5	12.8	20.0	7.8	10.3	5000
494372	Black	1	M14 X 1.5	12.8	20.0	7.8	10.3	500
465683	Natural	1	M14 X 1.5, M14 X 1.25	13.3	18.7	7.0	9.0	1000
12787	Natural	1	M14 X 9/16" X 24 UNF	13.7	20.0	8.0	10.0	5000
494373	Black	1	-	13.7	20.0	8.0	10.0	500
465684	Natural	1	M16 X 1.5	14.0	18.7	7.0	9.0	1000
12089	Natural	1	M16	14.5	20.0	5.5	7.5	5000
494374	Black	1	M16	14.5	20.0	5.5	7.5	500
055014300003	Natural	3	-	14.9	18.5	9.0	11.7	500
055014322003	Black	3	-	14.9	18.5	9.0	11.7	500
465685	Natural	1	M16 X 1.5	15.0	18.7	7.0	9.0	1000
055015400003	Natural	3	-	15.4	19.0	8.5	11.5	500
12789	Natural	1	M18 X 2.5, 3/8" BSP	15.6	20.0	8.0	10.0	5000

CONTINUED ON NEXT PAGE

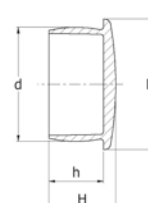
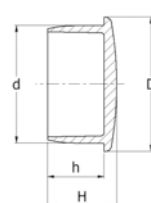
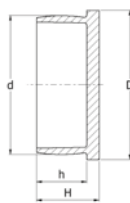
Barrel Plugs *CONTINUED*

SR 1011

Natural / Black LDPE



**EXTENDED RANGE**



Type 1

Type 2

Type 3

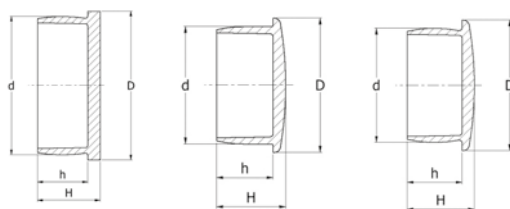
Part Number	Colour	Type	To Fit Thread Size	Dimensions (mm)				Std Pack Qty
				d	D	h	H	
494375	Black	1	M18 X 2.5, 3/8" BSP	15.6	20.0	8.0	10.0	500
055015700003	Natural	3	-	15.9	19.0	8.5	10.8	500
465686	Natural	2	M18 X 2, M18 X 1.5, M18 X 1"	16.5	18.7	7.0	9.0	1000
055016800003	Natural	3	-	17.0	19.5	9.0	11.6	500
12790	Natural	1	-	17.0	22.0	8.2	10.8	5000
494376	Black	1	-	17.0	22.0	8.2	10.8	500
465687	Natural	2	M20 X 2	17.8	24.6	9.0	11.3	1000
12791	Natural	1	M20 X 2.5	18.4	25.0	8.0	10.5	5000
494377	Black	1	M20 X 2.5	18.4	25.0	8.0	10.5	500
055018300003	Natural	2	-	18.8	21.5	9.0	12.0	500
12792	Natural	1	1/2" BSP	19.3	25.0	8.0	11.0	5000
494378	Black	1	1/2" BSP	19.3	25.0	8.0	11.0	500
465688	Natural	1	M22 X 2	19.5	24.6	9.0	11.1	1000
465689	Natural	1	M22 X 1.5	20.1	24.6	9.0	11.1	500
055020000003	Natural	3	-	20.5	25.2	9.0	12.0	250
055020022003	Black	3	-	20.5	25.2	9.0	12.0	500
12980	Natural	1	M22 X 1.5	20.5	30.0	10.7	13.2	3000
055021000003	Natural	2	-	21.0	25.6	12.6	15.6	250
055021022003	Black	2	-	21.0	25.6	12.6	15.6	500
12793	Natural	1	5/8" BSP	21.2	25.0	7.5	9.5	5000
12794	Natural	1	-	21.7	25.0	8.0	10.5	4000
494379	Black	1	-	21.7	25.0	8.0	10.5	500
12796	Natural	1	M24 X 2	22.4	28.0	9.0	12.0	4000
494380	Black	1	M24 X 2	22.4	28.0	9.0	12.0	500
055023000003	Natural	2	-	23.0	27.4	19.3	20.8	100
12797	Natural	1	-	23.4	28.0	9.0	12.0	4000
494381	Black	1	-	23.4	28.0	9.0	12.0	500
055024000003	Natural	2	-	24.0	27.0	12.8	14.4	100
12799	Natural	1	M26, 3/4" BSP	24.6	28.0	9.0	12.0	3000
494382	Black	1	M26, 3/4" BSP	24.6	28.0	9.0	12.0	500
055025500003	Natural	2	-	24.8	31.5	6.0	8.2	100
055024500003	Natural	3	-	25.0	32.0	13.0	16.2	100
12800	Natural	1	M27	25.5	28.0	7.5	9.5	3000
494383	Black	1	M27	25.5	28.0	7.5	9.5	500
12801	Natural	1	M28 X 1.5	26.5	28.0	9.0	12.0	4000
494384	Black	1	M28 X 1.5	26.5	28.0	9.0	12.0	500
055027200003	Natural	2	-	27.0	29.6	15.0	16.4	100
465690	Natural	1	M30 X 3	27.5	34.8	12.0	14.5	500
055028600003	Natural	3	-	28.6	34.0	15.0	18.8	100
12802	Natural	1	-	29.0	36.0	12.0	15.0	3000
12803	Natural	1	7/8" BSP	30.5	36.0	12.0	15.0	2500
494385	Black	1	7/8" BSP	30.5	36.0	12.0	15.0	500
12804	Natural	1	M33 X 1.5, 1" BSP	31.8	36.0	10.0	12.5	2000
465691	Natural	1	M33 X 2, M33 X 1.5, M36 X 3	32.6	34.8	12.0	14.5	500
055033500003	Natural	3	-	33.5	41.0	12.0	14.8	100
12805	Natural	1	M35 X 1.5	33.5	36.0	12.0	15.0	2000
494386	Black	1	M35 X 1.5	33.5	36.0	12.0	15.0	500
110479	Natural	1	-	34.8	42.0	15.0	18.0	2000
055035600003	Natural	2	-	35.5	46.5	15.0	19.5	100
110480	Natural	1	-	36.5	42.0	15.0	18.0	2000
465692	Natural	2	M39 X 3	37.6	40.4	12.0	14.5	500
110481	Natural	1	-	38.4	42.0	15.0	18.0	2000
465693	Natural	1	M39 X 1.5, M42 X 3	39.0	49.3	16.0	18.9	500
110482	Natural	1	-	40.6	44.0	15.0	18.0	1500

CONTINUED ON NEXT PAGE

## Barrel Plugs *CONTINUED*

SR 1011

Natural / Black LDPE



Type 1

Type 2

Type 3



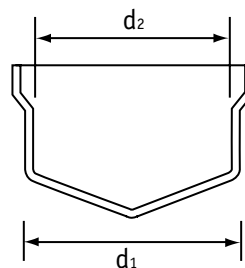
Part Number	Colour	Type	To Fit Thread Size	Dimensions (mm)				Std Pack Qty
				d	D	h	H	
10122	Natural	1	-	42.3	48.0	15.0	18.0	1000
055043300003	Natural	3	-	43.3	50.5	15.0	18.0	100
110483	Natural	1	-	46.0	55.0	18.0	21.0	1500
055050500003	Natural	3	-	50.5	57.0	14.0	19.4	100
110484	Natural	1	13/4" BSP	51.5	55.0	18.0	21.0	1500
055052000003	Natural	3	-	52.5	60.0	14.0	17.5	100
465694	Natural	1	M56 X 4, M56 X 3, M56 X 2	54.1	58.7	18.0	21.0	500
055055300003	Natural	2	-	55.3	59.5	19.5	23.0	100
110485	Natural	1	2" BSP	58.0	64.0	18.0	21.0	750
465695	Natural	1	-	59.6	73.5	18.0	21.0	500
12137	Natural	1	M72 X 2	70.0	78.0	18.0	21.5	500
465696	Natural	1	M75 X 1.5	73.7	82.3	17.4	20.4	250
465697	Natural	1	M80 X 4	80.8	92.5	17.4	20.4	250
055085000003	Natural	3	-	85.0	93.5	18.0	19.7	50
465698	Natural	1	M76 X 2	86.5	99.3	17.4	20.4	250
465699	Natural	1	M100 X 2	98.8	112.0	17.4	20.4	250
055110000003	Natural	2	-	110.5	130.0	18.0	21.5	50
465700	Natural	1	M115 X 4	111.7	123.0	17.4	20.4	250

## Flexiplugs

SR 1070

Black Flexible PVC

- Ideal for threaded and plain holes
- Resistant to splitting and shredding



Part Number	Dimensions (mm)		To Fit Thread Size		Std Pack Qty
	d1	d2	UNF	Metric	
FPWA-072	7.2	4.4	5/16"	M8	5000
FPWA-091	9.1	6.4	3/8"	M10	5000
FPWA-103	10.3	7.5	7/16"	-	5000
FPWA-118	11.8	9.0	1/2"	M12	5000
FPWA-135	13.5	10.7	9/16"	M12	5000
FPWA-154	15.4	12.6	5/8"	M16	5000
FPWA-191	19.1	16.3	3/4"	M20	2000
FPWA-216	21.6	18.8	7/8"	M24	2500
FPWA-258	25.8	23.0	1 1/16"	M27	2500
FPWA-302	30.2	27.4	1 3/16"	M33	2500

## Ezeplugs

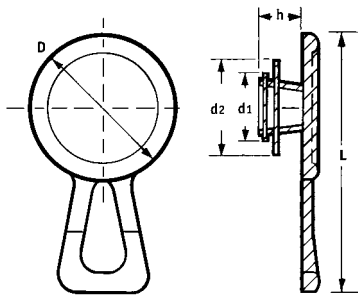
SR 1055

Red LDPE

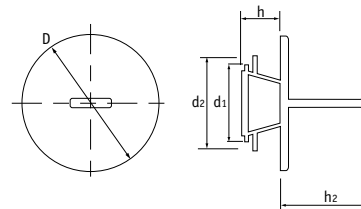
- Patented design
- Simple push fit
- Fit threaded or plain ports
- Six sizes cover over 29 popular thread sizes
- Strong, flexible pull-tab for quick removal



Type 1 - Lateral Pull



Type 2 - Central Pull



Type 1 - Lateral Pull

Part Number	To Fit Thread Size			Dimensions (mm)					Std Pack Qty
	UNF	BSP	Metric	h	D	d1	d2	L	
10093	7/16"	1/8"	M10, M12	9.0	19.0	9.0	13.2	34.0	5000
10094	1/2", 5/8", 9/16"	1/4"	M14, M16	7.0	22.7	9.8	16.5	40.0	5000
10095	3/4"	3/8"	M18, M20	8.0	30.0	13.0	19.5	47.0	4000
10096	7/8"	1/2", 5/8"	M22, M24	9.5	34.3	16.3	23.8	51.4	3000
10778	1 1/16", 1 1/8"	3/4"	M26, M28	9.5	40.0	19.0	27.6	57.0	2000
110001	1 1/4", 1 3/8"	1"	M30, M36	10.0	45.0	29.9	34.5	62.0	2000

Type 2 - Central Pull

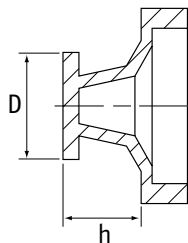
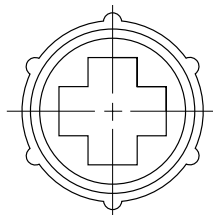
Part Number	To Fit Thread Size			Dimensions (mm)					Std Pack Qty
	UNF	BSP	Metric	h	D	d1	d2	h2	
467027	7/16"	1/8"	M10, M12	9.0	19.0	9.0	13.2	21.2	500
467028	1/2", 5/8", 9/16"	1/4"	M14, M16	7.0	22.7	9.8	16.5	21.2	500
467029	3/4"	3/8"	M18, M20	8.0	30.0	13.0	19.5	21.4	250
467030	7/8"	1/2", 5/8"	M22, M24	9.5	34.3	16.3	23.8	21.4	250
467031	1 1/16", 1 1/8"	3/4"	M26, M28	9.5	40.0	19.0	27.6	21.5	100
467032	1 1/4", 1 3/8"	1"	M30, M36	10.0	45.0	29.9	34.5	21.6	100

## Uniplugins

SR 1039

Red LDPE

- Unique design allows quick and secure fitting into threaded holes



Part Number	To Fit Thread Size				Dimensions (mm)		Std Pack Qty
	NPT	UNF	BSP	Metric	D	h	
10538	1/8"	7/16"	1/8"	M10	11.0	6.1	10000
15987	-	1/2"	1/4"	M12	12.3	8.3	10000
10537	1/4"	9/16"	-	M14	14.5	7.2	10000
10533	-	3/4"	1/2"	M20	19.7	9.5	5000
10532	-	1"	5/8" - 3/4"	M22-26	25.1	11.3	5000
10515	3/4"	1 3/16"	7/8"	M30	31.4	11.0	2000
10531	-	1 7/16"	1"	M33-36	37.7	12.5	2000

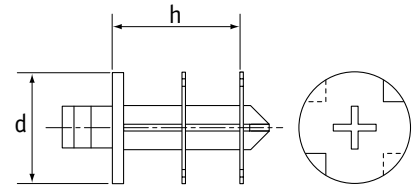
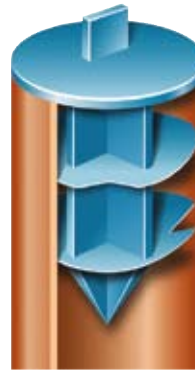
## Finned Plugs

SR 1069

Blue LDPE

- Prevent ingress of dirt into tubing
- Quick to fit and remove
- Small unobtrusive pull-tab
- Ideal for use in thin-walled copper tube

Part Number	Dimensions			Std Pack Qty
	d (ins)	To Fit Tube Dia (mm)	h (mm)	
110771	3/8	9.5	9.5	5000
110772	1/2	12.7	12.7	5000
110773	5/8	15.9	15.9	5000
110774	3/4	19.0	19.0	2500
110775	7/8	22.2	22.2	2500
110776	1 1/8	28.6	28.6	2500



## Flangeless Plugs

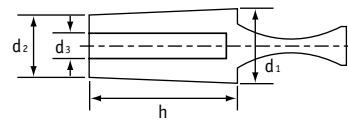
SR 1034

Black PVC

- Tapered shank and hollow core
- Each size fits a range of threads

Part Number	Dimensions (mm)				Std Pack Qty
	d <sub>1</sub>	d <sub>2</sub>	h	d <sub>3</sub>	
10510†	3.2	1.5	15.0	-	10000
10398†	5.0	3.0	15.0	-	10000
18409†	6.0	4.0	25.0	-	6000
11132	8.0	6.0	25.0	2.5	6000
11133	10.0	8.0	25.0	4.0	4000
11134	12.0	10.0	25.0	6.0	4000
11135	14.0	12.0	25.0	8.0	4000
11136	16.0	14.0	25.0	10.0	4000
11137	18.0	16.5	25.0	12.0	2000

† Thermoplastic rubber.



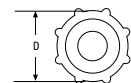
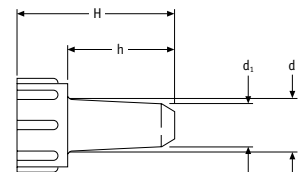
## Collar Plugs

SR 1160

Orange LDPE

- Self-tapping design
- Highly durable due to thick wall

Part Number	Size	Dimensions (mm)					Std Pack Qty
		D	d	d <sub>1</sub>	H	h	
464111	M2	8.0	2.0	1.3	14.5	7.5	5000
464112	M3	8.0	3.0	2.2	20.0	12.0	5000
464113	M4	8.0	3.9	2.9	22.5	15.0	2500
464114	M5	9.0	5.0	3.7	27.5	17.5	2500
464115	M6	10.0	5.8	4.4	27.5	17.5	2500
464116	M7	11.0	6.5	5.2	27.5	17.5	2500
464117	M8	14.0	7.5	6.2	27.5	17.5	2000
464118	M9	14.0	8.5	6.8	27.5	17.5	2000
464119	M10	16.0	9.5	7.6	30.5	20.5	1500
464120	M12	18.0	11.0	9.6	30.5	20.5	1500



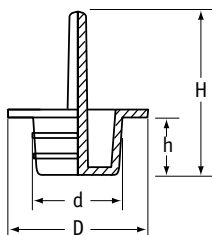


## Moss Pull Plugs

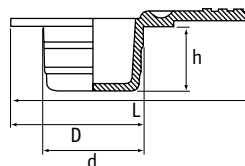
SR 1067

Black Thermoplastic Rubber

- Protect threaded or plain components
- Handy pull-tab for easy removal
- Acid-resistant
- Withstand temperatures of -40°C to +135°C
- Ideal for hydraulic and general engineering applications



Type 1 - Central Pull



Type 2 - Lateral Pull

### Type 1 - Central Pull Plugs

Part Number	Thread Size	Dimensions (mm)				Std Pack Qty
		d	D	h	H	
464905	M8	7.5	15.5	8.0	24.0	500
110043	M10	9.5	17.5	8.0	30.0	8000
110044	M12	11.5	19.5	8.0	30.0	7000
110045	M14	12.8	21.5	10.0	30.0	6000
110046	M16	15.2	23.5	10.0	32.0	4000
464906	M18	17.6	25.5	10.0	26.0	500
464907	M20	19.4	27.5	12.0	26.0	500
464908	M22	21.4	29.5	12.0	26.0	250
464909	M24	23.5	28.5	12.0	26.0	250

### Type 2 - Lateral Pull Plugs

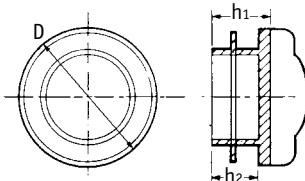
Part Number	Thread Size	Dimensions (mm)				Std Pack Qty
		d	D	h	L	
464857	M6	5.5	15.5	8.0	23.2	500
110291	M8	7.5	15.0	8.0	25.3	7000
110280	M10	9.5	17.0	8.0	27.3	7000
110281	M12	11.5	17.0	8.0	28.3	7000
110282	M14	13.0	21.0	10.0	31.0	6000
110283	M16	15.5	23.0	10.0	33.3	4000
110294	M18	17.0	26.0	10.0	35.5	4000
464858	M20	19.4	27.5	12.0	37.1	500
464859	M22	21.4	29.5	12.0	39.4	250
464860	M24	23.5	28.5	12.0	40.8	250

## Snap-Fit Plugs

SR 1008

Red LDPE

- Single turn gives tight fit once pushed into position



Part Number	To Fit Thread Size			Dimensions (mm)			Std Pack Qty
	Metric	BSP/GAS	UNF/JIC	D	h1	h2	
10530	M10	1/8"	7/16"	9.8	6.0	4.0	12000
12363	M12, M13, M14	1/4"	1/2"	13.1	7.0	5.0	10000
12364	M16	3/8"	5/8"	16.5	7.0	5.0	10000
10314	M18	-	3/4"	18.3	9.0	7.0	7000
12365	M20	1/2"	-	21.3	9.0	7.0	5000
12366	M22	5/8"	7/8"	22.4	9.0	7.0	5000
12621	M24	-	-	23.5	9.0	7.0	3000
12367	M25, M26	3/4"	1 1/16"	25.5	9.0	7.0	2000
12368	M28	7/8"	1 1/8"	27.9	9.0	7.0	3000
12369	M32	1"	1 5/16"	32.0	9.0	7.0	2500
12622	M36	1 1/8"	1 1/2", 1 3/8"	35.7	9.0	7.0	2000
12598*	M40, M42	1 1/4"	1 5/8"	41.5	9.0	7.0	2000

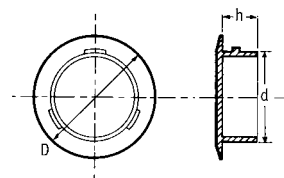
\* Pull-tab not as illustrated.

## Push-In Plugs

SR 1010

LDPE

- Quick fitting
- Suitable for most applications



Blue UNF/JIC

Part Number	Thread Size	Dimensions (mm)			Std Pack Qty
		D	h	d	
12512	7/16" x 20	15.5	7.0	9.5	10000
12513	1/2" x 20	17.0	7.0	11.0	10000
12514	9/16" x 18	20.5	7.0	12.5	10000
12515	5/8" x 18	23.7	6.5	14.3	10000
12516	3/4" x 16	24.9	8.6	17.4	10000
12517	7/8" x 14	26.6	10.4	20.3	5000
12518	1" x 14	31.0	10.0	23.5	4000
12519	1 1/16" x 12	35.5	10.0	24.8	2000

Red Without Lugs

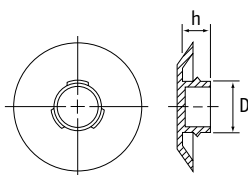
Part Number	Dimensions (mm)			Std Pack Qty
	D	h	d	
12520	16.4	6.3	11.9	5000
12522	23.8	7.0	19.2	5000
12523	30.0	6.1	25.5	2500
12524	35.0	8.0	30.9	2000

## Straight Pull Plugs

SR 1119

Yellow LDPE

- Provides all the advantages of a threaded plug with the ease of a push-in style



Part Number	To Fit UNF Thread Size	Dimensions (mm)		Std Pack Qty
		D	h	
I-1/4	1/4"	5.2	5.6	50000
I-5/16	5/16"	6.7	6.0	35000
I-3/8	3/8"	8.2	6.0	27000
I-7/16	7/16"	9.7	6.9	18000
I-1/2	1/2"	11.1	6.9	50000
I-9/16	9/16"	12.6	7.4	10000
I-5/8	5/8"	14.2	7.4	7500
I-11/16	11/16"	15.5	7.4	7000
I-3/4	3/4"	17.2	7.4	6000
I-13/16	13/16"	18.6	7.4	5000
I-7/8	7/8"	20.3	7.4	4500
I-1	1"	23.4	7.4	3500
I-1-1/16	1 1/16"	24.7	7.4	3000
I-1-3/16	1 3/16"	27.7	8.6	2000
I-1-1/4	1 1/4"	29.5	8.6	2000
I-1-5/16	1 5/16"	30.9	8.6	2000
I-1-5/8	1 5/8"	38.7	11.7	1000
I-1-7/8	1 7/8"	45.1	11.7	800

## Small Containers with Lids

SR 1651

Natural LDPE

- Snap-fit lids
- Ideal for small components and pastes



Part Number		Nominal Capacity (ml)	Internal Dimensions (mm)		Std Pack Qty
Base	Lid		Diameter	Height	
10514	10513	2.0	21.0	6.4	3000
36219	36218	5.0	25.4	9.0	3000
36220	34923	10.0	33.3	10.7	3000
36221	34924	15.0	38.1	12.9	1500
36222	34925	17.5	42.0	13.0	1500
36223	34924	20.0	38.2	19.1	1500
36224	34925	22.5	41.8	17.5	1500
36225	34925	30.0	40.7	28.4	1500
36226	34926	30.0	51.5	14.5	2000
36227	34924	40.0	38.5	36.2	1500
36228	34926	40.0	50.8	19.5	1000
36229	34927	45.0	44.5	30.6	1000
36230	34926	50.0	51.0	24.6	1000
36231	34927	70.0	44.0	44.8	1000
36232	34928	75.0	63.5	24.4	1000
36234	34926	100.0	50.8	51.0	500

## LPG Caps/Plugs

SR 1085

LDPE

- Developed with the LPG industry
- Help prevent dangerous gas leaks
- Meet LP Gas Association Code of Practice 15: Part 2
- Strapped to help prevent loss and for ease of replacement
- Marked with direction of fitting/removal

Test Pressure

Propane/mixes (styles 1 & 2) 26 bar

Butane (style 3) 26 bar

Independently tested to withstand these pressures, while providing gas-tight seal, even under extreme temperatures and adverse conditions (test results and certificate available on request).

Materials Type 1: Plug: HDPE, Strap: LDPE. Type 2: Cap: HDPE. Type 3: Cap: HDPE, Strap: LDPE



Type 1



Type 2



Type 3

Part Number	Type	*Service Connection	**Valve Type	Valve Description	Main Gas Type	Std Pack Qty
110471	1	105	-	P.O.L 5/8" BSP - LHT	Propane	1000
467140	2	109	A	W21.8 x 1/14 LHT	Various	250
110256	3	403	-	20mm 'Quick-On'	Butane	1000
110257	3	402	-	21mm 'Quick-On'	Butane	1000

\* According to LP Gas Association Code of Practice 15: Part 2.

\*\* According to DIN 477 Part 1.

# Over 500 million parts in stock - Next day delivery

To order call +44 (0) 1865 844572 or visit [www.mossplastics.com](http://www.mossplastics.com)



## Gas Cylinder Valve Protectors

SR 1060

Yellow LDPE

- Developed in conjunction with major European gas companies
- Tamper evident
- Protect industrial gas valves from ingress of dust and dirt
- Unique vent flap allows safe release of gas following accidental opening of valve



Type 1



Type 2



Type 3



Type 4



Type 5



Type 6

Part Number		Nominal Dia (mm)	Type	To Fit BS Valves†	Main Gases	Std Pack Qty
Std	Vent Flap					
12940	110048*	21.7	1	-	-	2000
10781	110009	21.8	1	8	CO <sub>2</sub>	2000
110007	110008	24.3	1	-	-	2000
10783	-	25.4	1	-	-	2000
110005	110006	26.4	1	-	-	2000
10784	-	28.8	1	-	-	2000
10785	110004	22.2	2	2, 3, 4	N <sub>2</sub> , O <sub>2</sub> , H <sub>2</sub> , He, C <sub>2</sub> H <sub>2</sub> , Ar	2500
10787	-	25.0	3	-	Medical	2000
110049	-	20.0	4	-	-	500
110583	-	30.0	4	-	-	500
-	110584	32.7	4	-	-	500
110239	110240	30.0	5	** Nevoc	-	1000
-	110586	35.0	5	-	-	1000
-	110588	38.0	5	-	-	1000
110589	-	21.8	6	8	CO <sub>2</sub>	500
110590	-	24.3	6	-	-	500
110832	-	28.0	6	-	-	500
110592	-	30.0	6	** Nevoc	-	500

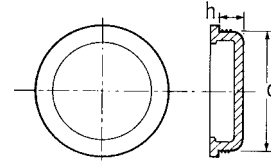
\* Supplied with vent strip. † According to standard BS341. \*\* Designed especially for N.E.V.O.C. valves with 30mm whitworth outlets, as increasingly used on 300-bar cylinders. Other colours available; please contact our sales office for more details.

## Tube End Plugs

SR 1601

White LDPE

- Secure closures for postal tubes, composite containers and clear plastic tubing



### Shallow Range

Part Number	Dimensions (ins)		Std Pack Qty
	d	h	
12360	1.25	0.25	3000
12361	1.37	0.25	3000
12362	1.62	0.25	2000
11926	2.0	0.25	1200
11927	2.25	0.25	2000
11928	2.5	0.25	2000
11930	3.0	0.25	500

### Imperial Range

Part Number	Dimensions (ins)		Std Pack Qty
	d	h	
11123	1.5	0.375	2000
10290	1.75	0.375	1200
15141*	2.0	0.45	3000
10148	2.25	0.375	2000
15142*	2.5	0.45	2000
12300	2.56	0.375	1500
10291	2.75	0.437	1500
15143*	3.0	0.43	1000
11357	3.25	0.50	800
12730	3.3	0.375	800
11358	3.5	0.50	700
11600	3.75	0.50	700
10138	4.0	0.50	600
11888	4.5	0.50	500
12304	4.75	0.50	400
11450	5.0	0.60	300
11898	5.5	0.50	300
11572	6.0	0.59	150
11974	6.5	0.50	200
51854	8.0	0.50	100

\* Incorporate bevelled lead-in for easy insertion.

### Metric Range

Part Number	Dimensions (mm)		Std Pack Qty
	d	h	
11619	25.0	8.0	12500
11587	30.0	8.4	8000
12641	40.0	7.8	5000
12305#*	46.0	10.5	3000
12642	50.0	6.9	3000
10920	54.0	8.0	2500
12643	60.0	7.0	2000
12306#	63.0	10.5	1200
12644	71.5	8.0	1800
12307	78.4	10.8	800
12645	80.0	10.2	1000
10724	99.0	8.8	700
12646	100.0	10.8	500
12974	108.0	10.7	500
12964	150.0	12.2	200

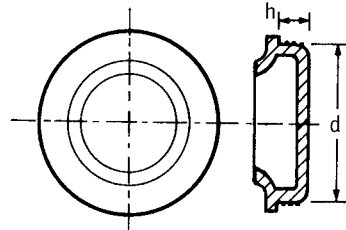
# Finger grip style

\* Comes with a vent hole option.

## Tube End Plugs with All-Round Grip

SR 1603

White LDPE



### Imperial Range

Part Number	Dimensions (ins)		Std Pack Qty
	d	h	
12580	2.0	0.38	2000
12624	2.25	0.38	2000
10301	2.5	0.32	1500
12561	3.0	0.35	1000
12626	3.5	0.5	700
12627	4.0	0.32	600
12628	5.03	0.6	250
12629	6.0	0.5	150

### Metric Range

Part Number	Dimensions (mm)		Std Pack Qty
	d	h	
12580	50.0	9.5	2000
12581	60.0	9.5	1800
12582	66.0	7.5	750
10725	71.0	6.0	1000
12560	70.0	9.5	1000
12584	95.0	7.5	600

## Ribbed Tube End Plugs

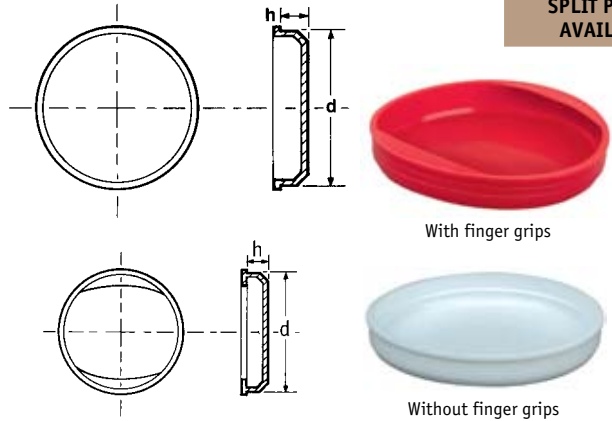
SR 1604

White or Red LDPE

- Option with finger grip for easy removal

**SPLIT PACKS AVAILABLE**

Part Number			Dimensions (mm)		Std Pack Qty
With Finger Grips	Without Finger Grips		d	h	
White	Red				
10254	10422	-	30.0	7.8	10000
199500	199104	10228	40.0	10.8	4000
199501	199126	10242	50.0	10.8	2500
199502	199128	10245	60.0	10.7	1750
199503	199175	10246	70.0	10.5	1000
199504	199060	10247	80.0	12.5	800
199505	199152	-	90.0	12.5	600
199506	199166	10248	100.0	12.5	500
10542	50126	-	110.0	12.8	350
199507	199508	-	120.0	12.2	300
10543	50192	-	125.0	13.0	300
10544	50194	-	135.0	13.3	200

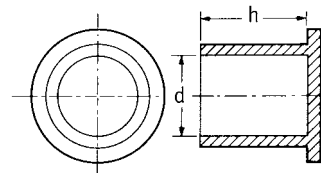


## Stud Protection Caps

SR 1024/25/1124

LDPE

- Used throughout the automotive and engineering industries for protecting exposed studs



### SR 1025 Red LDPE

Part Number	Dimensions			Std Pack Qty
	d		h	
	(ins)	(mm)	(mm)	
11098*	-	4.4	12.7	5000
51534*	1/4	6.4	41.3	7000
50454	5/16	7.9	19.1	10000
60273	-	7.5	38.1	5000
10660	-	9.1	27.2	7000
11906	7/16	11.1	23.8	6000
51051	-	11.9	22.2	5000
10618	-	11.9	28.6	4000
11160	-	12.7	27.3	4000
10243	1/2	12.7	46.0	2500
11162	-	14.0	21.0	5000
10723	9/16	14.3	33.6	1500
10720	5/8	15.9	23.8	3000
60864	5/8	15.9	71.8	1000
10691	3/4	19.0	33.6	2000
10191	13/16	20.6	36.5	1200
10426	7/8	22.2	77.8	500
10959	-	23.5	55.5	600
11270	1	25.4	55.6	500
11292	1 1/8	28.6	62.8	400
11319	1 1/4	32.0	58.5	1000
60807	1 1/2	38.1	44.5	400

\* Black PVC # No flange

### SR 1024 Natural LDPE

#### Metric with Knurled Head

Part Number	Dimensions (mm)		Std Pack Qty
	d	h	
12754	5.0	13.0	10000
12756	6.0	10.0	10000
12757	8.0	10.0	10000
12758	8.0	16.0	10000
12760	12.0	16.0	8000
10719	12.8	20.2	8000
12763	14.0	20.0	5000
12765	16.0	15.0	5000
12766	16.0	20.0	3000
12769	20.0	15.0	3000
12770	20.0	20.0	2000
12771	22.0	18.0	2000
12772	24.0	18.0	2000

### SR 1124 Natural LDPE Imperial Range

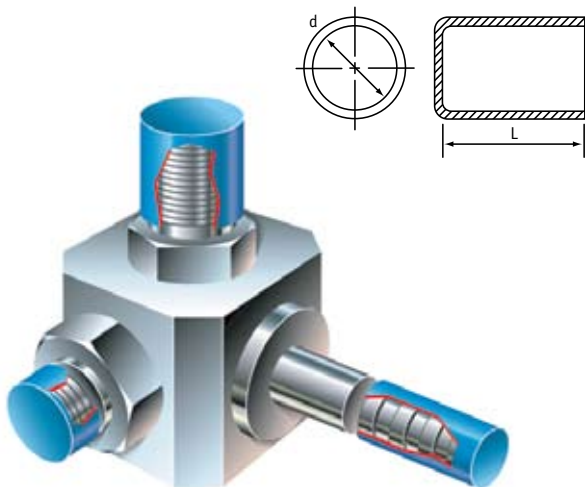
Part Number	BSP / NPT Thread	Dimensions (mm)		Std Pack Qty
		d	h	
E-3/8-A	3/8"	9.6	21.3	10000
E-1/2	1/2"	12.5	11.7	8000
E-9/16	9/16"	14.0	12.5	5900
E-3/4-CAT	3/4"	18.5	15.9	3000
E-13/16	13/16"	20.3	14.5	2500
E-7/8-CAT	7/8"	22.0	21.1	3500
E-1	1"	25.0	16.8	1500
E-1-3/16	1 3/16"	29.8	19.3	2000
E-2-1/2	2 1/2"	63.3	30.7	350

## Non-Threaded End Caps

SR 1062

Blue LDPE

- Available in a wide range of sizes
- Ideal for protecting threaded or non-threaded tubing, pipes and rods



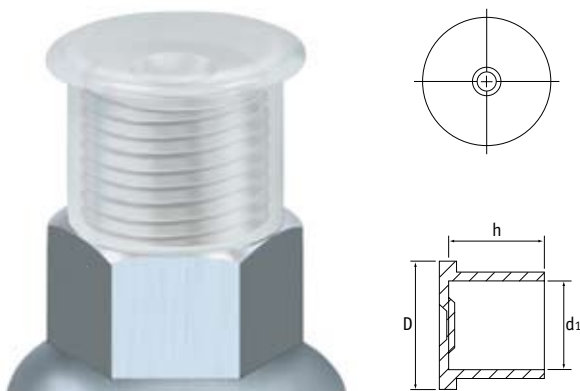
Part Number	Dimensions				Std Pack Qty
	d		L		
	(ins)	(mm)	(ins)	(mm)	
110549	5/32	3.9	5/8	15.8	45000
110550	3/16	4.7	5/8	15.8	35000
110551	1/4	6.3	7/8	22.2	15000
110552	5/16	7.9	7/8	22.2	10000
110553	3/8	9.5	7/8	22.2	8500
110554	7/16	11.1	7/8	22.2	7000
110555	1/2	12.7	7/8	22.2	5000
110556	9/16	14.2	7/8	22.2	4000
110557	5/8	15.8	7/8	22.2	3500
110558	11/16	17.4	7/8	22.2	3000
110559	3/4	19.0	7/8	22.2	5000
110560	13/16	20.6	7/8	22.2	4500
110561	7/8	22.2	7/8	22.2	4000
110562	15/16	23.8	13/16	20.6	3500
110563	1	25.4	3/4	19.0	3500
110564	1 1/16	26.9	7/8	22.2	3000
110565	1 1/8	28.5	7/8	22.2	2500
110566	1 3/16	30.1	1	25.4	2000
110567	1 1/4	31.7	7/8	22.2	2000
110568	1 5/16	33.3	7/8	22.2	2000
110569	1 3/8	34.9	7/8	22.2	1800
110570	1 7/16	36.5	7/8	22.2	1600
110571	1 1/2	38.1	7/8	22.2	1500
110572	1 9/16	39.6	1	25.4	1200
110573	1 5/8	41.2	1	25.4	1900
110574	1 11/16	42.8	7/8	22.2	1200
110575	1 3/4	44.4	7/8	22.2	1200
110576	1 7/8	47.6	7/8	22.2	1000
110577	2	50.8	7/8	22.2	1000
110578	2 1/2	63.5	7/8	22.2	600

## Straight Flanged Caps

SR 1116

Natural LDPE

- Typically used to protect BSP / NPT threads with or without O-Rings



### Imperial

Part Number	BSP / NPT Thread	Dimensions (mm)			Std Pack Qty
		D	d1	h	
ECS-0125	1/8"	16.8	10.1	9.7	10000
ECS-0250	1/4"	20.6	13.5	13.5	9000
ECS-0375	3/8"	23.9	17.0	13.5	5000
ECS-0500	1/2"	27.7	21.2	18.3	3000
ECS-0750	3/4"	33.3	26.5	19.1	2000
ECS-1000	1"	39.6	33.3	23.6	1000
ECS-1250	1 1/4"	49.3	42.0	24.6	800
ECS-1500	1 1/2"	54.9	48.1	24.6	600
ECS-2000	2"	66.6	60.2	26.2	500

### Metric

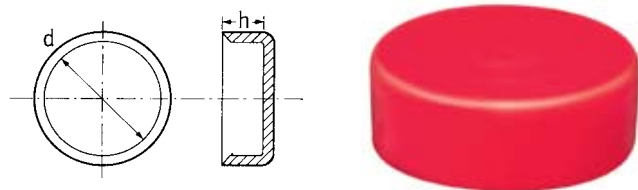
Part Number	To fit Metric Thread	Dimensions (mm)			Std Pack Qty
		D	d1	h	
ECM-10	M10	17.5	9.8	9.7	10000
ECM-12	M12	19.5	11.8	12.0	7000
ECM-14	M14	21.5	13.7	12.0	5000
ECM-16	M16	23.5	15.7	12.0	5000
ECM-18	M18	25.5	17.7	12.0	3000
ECM-20	M20	27.5	19.7	14.1	3000
ECM-22	M22	29.5	21.7	14.1	3000
ECM-33	M33	40.4	32.6	17.5	2000
ECM-38	M38	44.5	37.6	19.0	1000

### Tube End Caps - Short

SR 1610

Red LDPE

- General-purpose closure
- Available in a wide range of sizes



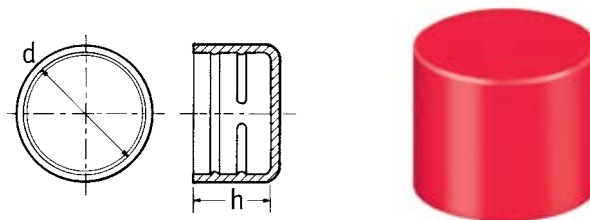
Part Number	Dimensions (mm)		Std Pack Qty
	d	h	
15504*	8.9	8.0	5000
11418	19.0	13.0	5000
11308	22.1	11.0	5000
10888	25.5	13.1	3000
10541	28.5	13.3	2000
10192	31.7	12.8	2000
10389	34.7	12.5	1500
10594	38.0	12.2	1500
10297	41.2	12.8	1200
10152	44.5	12.4	1200
10918	47.0	12.4	1000
11130	50.3	11.7	1000
10539	53.5	12.3	2000
10402	57.0	12.5	700
10557	59.5	12.5	600
10711	63.0	12.6	500
12891	66.4	11.0	1200
10856	69.8	12.1	1500
12310	72.5	12.6	1000
10217	75.5	12.3	1000
11095	79.4	12.7	1000
11045	82.0	12.3	800
12308	85.0	12.2	800

\* Supplied in black PVC.

### Ribbed Caps

SR 1046

Red LDPE



Part Number	Dimensions (mm)		Std Pack Qty
	d	h	
12773	10.2	16.0	10000
12774	12.0	16.0	10000
12775	15.0	20.0	5000
12776	16.0	20.0	5000
12849	18.0	20.0	2500
12777	20.0	20.0	2000
12850	22.0	20.0	2500
12779	25.0	20.0	2000
12780	28.0	26.5	1000
12846	30.0	26.5	800
12781	35.0	26.5	800
12782	38.0	27.0	500
12982	54.0	27.8	300
12960*	110.0	34.6	150

\* This part supplied in yellow low-density polyethylene.

### Tube End Caps - Long

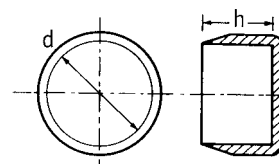
SR 1620

Red LDPE

- Extra depth and feathered edge ensure tight fit
- Design prevents accidental displacement



Part Number	Dimensions (mm)		Std Pack Qty
	d	h	
12549	25.0	37.0	1000
12551	31.0	39.0	2000
12532	43.0	43.0	800
12554	57.0	44.0	700
12556	70.0	47.0	400
12558	81.5	54.0	250



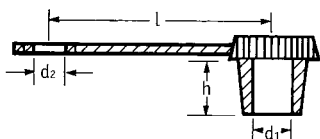


## Grease Nipple Caps

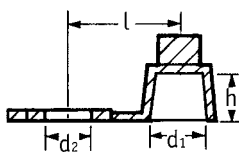
SR 1019

Red LDPE

- Effective, low-cost protection for grease nipples



Type 1



Type 2

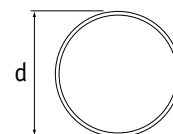
Part Number	Type	Dimensions (mm)				Std Pack Qty
		d1	d2	L	h	
087063000503	1	6.0	6.4	29.5	9.3	500
61454	2	6.3	6.2	11.6	5.2	10000

## PVC Pipe Caps

SR 1340

Grey PVC

- Ideal for traffic signal posts
- Flexible PVC design reduces the risk of cracking, avoiding corrosion to the post
- Flexibility allows caps to be fitted easily

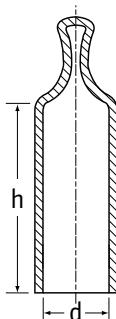
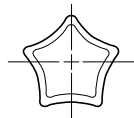


Part Number	Dimensions (mm)		Nominal Pipe Size	Std Pack Qty
	d	h		
462819	76.1	37.0	2 1/2"	250
462820	88.9	37.0	3"	200
462821	114.3	42.0	4"	125
462822	139.7	44.0	5"	80
462823	168.3	34.0	6"	75

## Multi-Flex Caps

SR 1072

Black Flexible PVC



- Easy fitting and removal
- Unique design fits range of diameters
- Suitable for plain or threaded applications

Part Number	To Fit Thread Size			Dimensions (mm)		Std Pack Qty
	Metric	UNF	BSP	d	h	
MFWA-090-025	M10	3/8"	1/8"	9.0-11.0	25.0	5000
MFWA-110-025	M12	7/16", 1/2"	1/4"	11.0-13.5	25.0	2000
MFWA-135-030	M14, M16	9/16", 5/8"	-	13.5-16.5	30.0	2000
MFWA-165-040	M18	3/4"	3/8"	16.5-20.0	40.0	1500
MFWA-200-050	M20, M22, M24	7/8"	1/2", 5/8"	20.0-24.0	50.0	1500

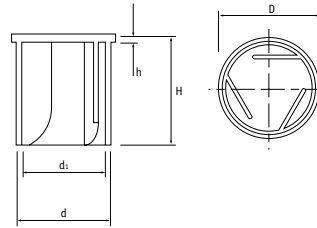
## Finned Stud Caps

SR 1056

Natural LDPE

Part Number	Type	Stud Size Range (mm)	Dimensions (mm)					Std Pack Qty
			d <sub>1</sub>	d	D	h	H	
466964	1	6.5-8.0	10.0	12.0	14.0	1.5	22.0	500
466965	1	8.0-9.0	11.0	13.0	15.0	1.5	22.0	500
466966	1	9.0-10.5	12.5	14.5	16.5	1.5	22.0	250
466967	1	11.0-13.0	16.0	18.0	20.0	1.5	22.0	250
466968	1	14.0-16.0	18.0	20.0	22.0	1.5	22.0	250
466969	1	17.0-19.0	22.0	24.0	26.0	1.5	22.0	100
466970	1	20.0-22.0	25.0	27.0	29.0	1.5	25.0	100
466971	1	24.0-26.0	29.0	31.0	33.0	1.5	30.0	100
466972	1	28.0-30.0	33.0	35.0	37.0	1.5	34.0	100
10220*	2	6.5-8.0	10.0	12.0	-	-	31.5	5000
10221	2	8.0-9.02	11.0	13.0	-	-	20.5	5000
10223	2	9.0-10.0	12.0	14.0	-	-	20.5	5000

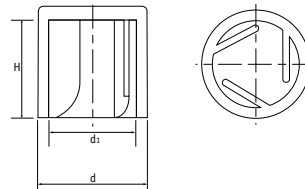
\* This size has bevelled corners.



Type 1



Type 1: With Grip



Type 2

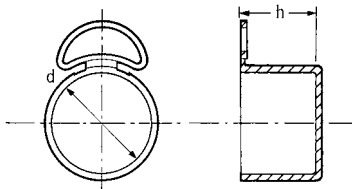


Type 2: Without Grip

## Quick-Fit/Quick-Release Caps

SR 1022

- Quick fitting and removal
- Simple tear-away tab for quick release



BSP/Gas

Yellow LDPE

Part Number	Thread Size	Dimensions (mm)		Std Pack Qty
		h	d	
10351	1/4" x 19	11.0	13.0	10000
10492	3/8" x 19	12.0	16.0	5000
10308*	1/2" x 14	15.0	21.2	4000
12373*†	5/8" x 14	18.5	23.0	3000
10701	3/4" x 14	23.8	26.3	1500
12375*	7/8" x 14	25.0	29.5	1500
12376*	1" x 11	18.0	34.0	1500

\* Variation in tear-away tab type.

† Available with safety vent hole.

UNF/JIC

Blue LDPE

Part Number	Thread Size	Dimensions (mm)		Std Pack Qty
		h	d	
18390*	3/8" x 24	11.1	9.2	4000
18304*	7/16" x 20	11.7	11.0	5000
18305	1/2" x 20	11.7	12.4	5000
18306*	9/16" x 18	12.1	14.0	5000
10348*	5/8" x 18	12.1	15.5	5000
16245*	11/16" x 16	12.1	17.1	5000
10349*	3/4" x 16	14.2	18.8	4000
16246*	13/16" x 16	14.2	20.4	4000
10702	7/8" x 14	16.5	22.0	2000
16247	1" x 14	16.5	25.0	2000
110002	11/16" x 12	19.0	26.7	2000
16248	13/16" x 12	19.0	29.8	1000
18311*	15/16" x 12	19.0	33.1	1000
16249*	17/16" x 12	19.0	36.4	1000
18405*	111/16" x 12	21.0	42.4	800
18406*	17/8" x 12	24.1	47.5	500

Metric

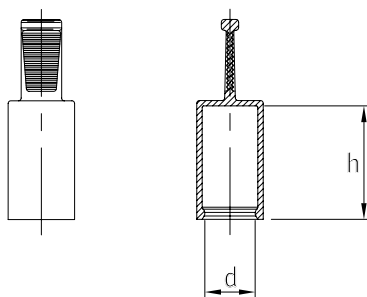
Yellow LDPE

Part Number	Thread Size	Dimensions (mm)		Std Pack Qty
		h	d	
10839	M12	12.0	12.0	5000
10840	M14	14.1	14.0	5000
10080*	M16	16.5	16.0	5000
10841	M18	18.0	18.0	4000
10842	M20	20.0	20.0	2000
10224	M22	22.0	22.0	2000

## Pull-Tab Cap

SR 6110

Yellow EVA (Ethylene Vinyl Acetate)



- Large pull-tab allows easy removal
- Internal lip prevents ingress of dirt
- Material provides good tensile strength, toughness and increased flexibility

Part Number	Dimensions (mm)		Std Pack Qty
	d	h	
464885	4.0	20.2	500
464886	5.0	20.0	500
464887	6.0	20.0	500
464888	8.0	20.0	500
464889	9.0	20.0	500
464890	10.0	20.0	500
464891	11.0	20.0	500
464892	12.0	20.0	500
464893	13.0	20.0	500
464894	14.0	20.0	500
464895	15.0	20.0	500
464896	16.0	20.0	500
464897	18.0	20.0	500
464898	20.0	20.0	500
464899	20.0	30.0	500
464900	24.0	20.0	500

## Tear Tab Caps

SR1033

LDPE



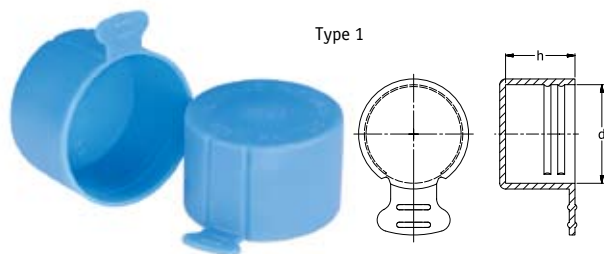
- Tear tab for easy removal
- Type 1 made to protect UNF/JIC threads from damage
- Type 2 made to protect NPT threads from damage
- The cap is versatile to offer a solution to numerous applications

### Type 1

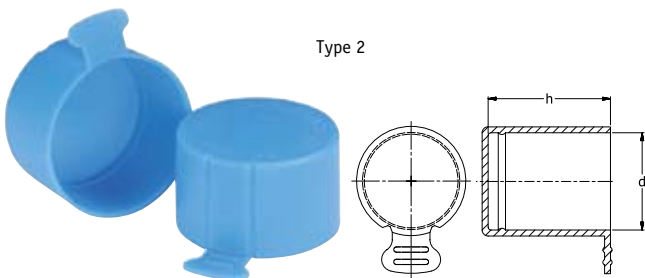
Part Number		UNF/JIC Thread Size	Dimensions (mm)		Std Pack Qty
Blue	Natural		h	d	
TS3A	TS3B	3/8" - 24	11.1	9.3	13000
TS4A	TS4B	7/16" - 20	11.7	11.0	11000
TS5A	TS5B	1/2" - 20	11.7	12.5	9000
TS6A	TS6B	9/16" - 18	12.1	14.0	7000
TS7A	TS7B	11/16" - 16	12.1	17.2	5000
TS8A	TS8B	3/4" - 16	14.2	18.8	3500
TS9A	TS9B	13/16" - 16	14.2	20.4	3000
TS10A	TS10B	7/8" - 14	16.5	22.2	4500
TS11A	TS11B	1" - 14	16.5	25.0	4000
TS12A	TS12B	1-1/16" - 12	19.1	26.8	3000
TS13A	TS13B	1-3/16" - 12	19.1	29.8	2700
TS16A	TS16B	1-5/16" - 12	19.1	33.1	2200
TS17A	TS17B	1-7/16" - 12	19.1	36.4	200
TS20A	TS20B	1-5/8" - 12	21.0	41.0	1300
TS21A	TS21B	1-11/16" - 12	21.0	42.4	1200
TS24A	TS24B	1-7/8" - 12	24.1	47.5	900
TS32A	TS32B	1-1/2" - 12	30.5	63.7	400

### Type 2

Part Number	Colour	BSP / NPT Thread	Dimensions (mm)		Std Pack Qty
			h	d	
Y1/8A	Blue	1/8"	8.1	9.8	20000
Y1/4A	Blue	1/4"	12.5	13.5	8000
Y3/8A	Blue	3/8"	12.5	16.9	5500
Y1/2A	Blue	1/2"	16.3	20.8	5500
Y3/4A	Blue	3/4"	16.0	26.2	4000
Y1A	Blue	1"	19.9	33.2	2000
Y1-1/4A	Blue	1-1/4"	21.3	41.7	1300
Y1-1/2A	Blue	1-1/2"	21.6	47.9	1000
Y2A	Blue	2"	22.6	59.4	600



Type 1



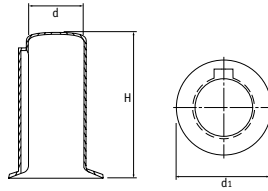
Type 2

## Driveshaft Protection Caps

SR 1079

### Type 1 - Yellow LDPE

- Fit driveshafts to DIN 748, IEC 600-72 and ISO R775
- Protection and masking of driveshaft as well as the surrounding bearings

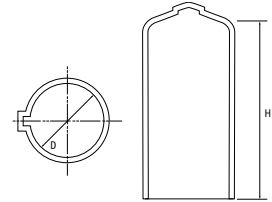


### Type 1 - Yellow LDPE

Part Number	To Fit Shaft Diameter d (mm)	Dimensions (mm)		Std Pack Qty
		d1	H	
467003	9.0	14.5	25.0	500
467004	10.0	16.0	30.0	500
467005	11.0	17.5	30.0	500
467006	14.0	22.5	35.0	500
467007	15.0	25.5	35.0	500
467008	16.0	25.5	50.0	500
467009	19.0	30.5	50.0	400
467010	20.0	32.0	60.0	250
467011	22.0	35.5	60.0	250
467012	24.0	38.5	60.0	200
467013	25.0	40.0	70.0	200
467014	28.0	45.0	70.0	150
467015	30.0	48.0	95.0	100
467016	32.0	51.0	95.0	100
467017	35.0	56.0	95.0	100
467018	38.0	61.0	95.0	100
467019	42.0	67.0	130.0	75
467020	45.0	72.0	130.0	50
467021	48.0	77.0	130.0	100
467022	55.0	88.0	130.0	100
467023	60.0	96.0	165.0	75
467024	65.0	104.0	165.0	75
467025	70.0	108.0	165.0	75
467026	75.0	112.0	165.0	75

### Type 2 - Yellow Flexible PVC

- Fit driveshafts to DIN 748, IEC 600-72 and ISO R775
- Resistant to tearing, splitting, oil and most chemicals



### Type 2 - Yellow Flexible PVC

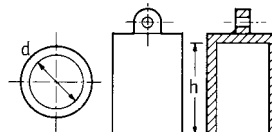
Part Number	To Fit Shaft Diameter d (mm)	Dimensions (mm)		Std Pack Qty
		D	H	
SPWJ-10	10.0	10.0	50.0	1500
SPWJ-11	11.0	11.0	50.0	1500
SPWJ-14	14.0	14.0	50.0	1500
SPWJ-16	16.0	16.0	60.0	1000
SPWJ-19	19.0	19.0	60.0	1000
SPWJ-20	20.0	20.0	60.0	1000
SPWJ-22	22.0	22.0	70.0	750
SPWJ-24	24.0	24.0	70.0	750
SPWJ-25	25.0	25.0	70.0	500
SPWJ-28	28.0	28.0	80.0	500
SPWJ-30	30.0	30.0	80.0	400
SPWJ-32	32.0	32.0	100.0	250
SPWJ-35	35.0	35.0	100.0	200
SPWJ-38	38.0	38.0	100.0	200
SPWJ-42	42.0	42.0	130.0	150
SPWJ-45	45.0	45.0	130.0	150
SPWJ-48	48.0	48.0	130.0	100
SPWJ-55	55.0	55.0	130.0	100
SPWJ-60	60.0	60.0	140.0	100
SPWJ-65	65.0	65.0	140.0	100
SPWJ-70	70.0	70.0	140.0	100
SPWJ-75	75.0	75.0	140.0	100

## Moss Caps

SR 1020

### Black PVC or Green Vinyl

- Highly resistant to shredding
- Excellent for threaded applications
- Green vinyl can be used with oil and grease applications



Type 1



Type 2

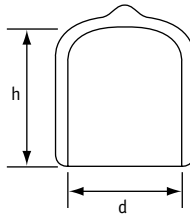
Part Number		Type	Dimensions (mm)		Std Pack Qty
Black PVC	Green Vinyl		d	h	
12696	12226	2	5.0	23.5	10000
12697	12227	2	6.0	25.0	10000
12698	12228	1	7.0	24.0	5000
12699	12229	1	8.0	24.5	8000
12700	12230	2	9.0	25.0	3500
12701	12231	1	10.0	29.5	2500
12702	12232	1	11.0	29.0	4500
12703	12233	2	12.0	29.0	4000
12704	12234	1	13.0	29.0	3500
12705	12235	2	14.0	29.0	1500
12706	12236	2	15.0	29.5	2500
12707	12237	2	16.0	28.0	2500
12708	12238	2	17.0	29.5	2000
12709	12239	2	18.0	28.5	2000
12710	12240	1	19.0	29.5	2000
12711	12241	1	20.0	28.5	1600
12712	12242	2	21.0	34.5	1300
12713	12243	2	22.0	34.0	1200
12714	12244	2	23.0	34.5	1000
12715	12245	1	24.0	34.0	1000
12716	12246	2	25.0	34.5	1000
12717	12247	2	26.0	34.5	900
12718	12248	2	27.0	33.5	900
12719	12249	1	28.0	33.5	800
12720	12250	2	29.0	35.0	800
12721	12251	2	30.0	34.5	600

## Flexicaps

SR 1044

Type 1: Black Flexible PVC (80 Shore)

- Flexible, durable PVC
- Suitable for a multitude of applications



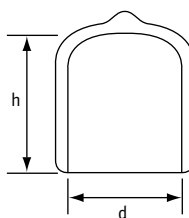
Part Number	To Fit Thread Size			Dimensions (mm)		Std Pack Qty
	Metric	BSP	UNF	d	h	
FCWA-0020-013	-	-	-	2.0	13.0	5000
FCWA-0028-013	M3	-	-	2.8	13.0	5000
FCWA-0032-013	-	-	-	3.2	13.0	5000
FCWA-0036-013	M4	-	-	3.6	13.0	5000
FCWA-0036-019	M4	-	-	3.6	19.0	5000
FCWA-0036-025	M4	-	-	3.6	25.0	5000
FCWA-0039-013	-	-	-	3.9	13.0	5000
FCWA-0039-019	-	-	-	3.9	19.0	5000
FCWA-0039-025	-	-	-	3.9	25.0	5000
FCWA-0044-013	M5	-	3/16"	4.4	13.0	5000
FCWA-0044-019	M5	-	3/16"	4.4	19.0	5000
FCWA-0044-025	M5	-	3/16"	4.4	25.0	5000
FCWA-0048-013	M5	-	3/16"	4.8	13.0	5000
FCWA-0048-019	M5	-	3/16"	4.8	19.0	5000
FCWA-0048-025	M5	-	3/16"	4.8	25.0	5000
FCWA-0052-013	-	-	-	5.2	13.0	5000
FCWA-0052-019	-	-	-	5.2	19.0	5000
FCWA-0052-025	-	-	-	5.2	25.0	5000
FCWA-0055-013	-	-	-	5.5	13.0	5000
FCWA-0055-019	-	-	-	5.5	19.0	5000
FCWA-0055-025	-	-	-	5.5	25.0	5000
FCWA-0059-013	M6	-	1/4"	5.9	13.0	5000
FCWA-0059-019	M6	-	1/4"	5.9	19.0	5000
FCWA-0059-025	M6	-	1/4"	5.9	25.0	5000
FCWA-0064-013	-	-	-	6.4	13.0	5000
FCWA-0064-019	-	-	-	6.4	19.0	5000
FCWA-0064-025	-	-	-	6.4	25.0	5000
FCWA-0070-013	-	-	-	7.0	13.0	5000
FCWA-0070-019	-	-	-	7.0	19.0	5000
FCWA-0077-013	M8	-	5/16"	7.7	13.0	5000
FCWA-0077-019	M8	-	5/16"	7.7	19.0	5000
FCWA-0070-025	-	-	-	7.0	25.0	5000
FCWA-0077-025	M8	-	5/16"	7.7	25.0	5000
FCWA-0079-013	-	-	-	7.9	13.0	5000
FCWA-0079-019	M8	-	5/16"	7.9	19.0	5000
FCWA-0079-025	M8	-	5/16"	7.9	25.0	5000
FCWA-0083-013	-	-	-	8.3	13.0	5000
FCWA-0083-019	-	-	-	8.3	19.0	5000
FCWA-0083-025	-	-	-	8.3	25.0	5000
FCWA-0087-013	-	-	-	8.7	13.0	5000
FCWA-0087-019	-	-	-	8.7	19.0	5000
FCWA-0087-025	-	-	-	8.7	25.0	5000
FCWA-0095-013	M10	1/8"	3/8"	9.5	13.0	5000
FCWA-0095-019	M10	1/8"	3/8"	9.5	19.0	5000
FCWA-0095-025	M10	1/8"	3/8"	9.5	25.0	5000
FCWA-0103-013	-	-	-	10.3	13.0	5000
FCWA-0103-019	-	-	-	10.3	19.0	5000
FCWA-0103-025	-	-	-	10.3	25.0	5000
FCWA-0111-013	M12	-	7/16"	11.1	13.0	5000
FCWA-0111-019	M12	-	7/16"	11.1	19.0	5000
FCWA-0111-025	M12	-	7/16"	11.1	25.0	5000
FCWA-0119-013	M12	-	1/2"	11.9	13.0	5000
FCWA-0119-019	M12	-	1/2"	11.9	19.0	5000
FCWA-0119-025	M12	-	1/2"	11.9	25.0	5000
FCWA-0127-013	-	1/4"	1/2"	12.7	13.0	5000

Part Number	To Fit Thread Size			Dimensions (mm)		Std Pack Qty
	Metric	BSP	UNF	d	h	
FCWA-0127-019	-	1/4"	1/2"	12.7	19.0	5000
FCWA-0127-025	-	1/4"	1/2"	12.7	25.0	2500
FCWA-0135-013	M14	-	-	13.5	13.0	5000
FCWA-0135-019	M14	-	-	13.5	19.0	5000
FCWA-0135-025	M14	-	-	13.5	25.0	5000
FCWA-0138-013	M14	-	-	13.8	13.0	5000
FCWA-0138-019	M14	-	-	13.8	19.0	2500
FCWA-0138-025	M14	-	-	13.8	25.0	2500
FCWA-0143-013	M15	-	-	14.3	13.0	5000
FCWA-0143-019	M15	-	-	14.3	19.0	2500
FCWA-0143-025	M15	-	-	14.3	25.0	5000
FCWA-0152-013	-	-	-	15.2	13.0	5000
FCWA-0152-019	-	-	-	15.2	19.0	5000
FCWA-0152-025	-	-	-	15.2	25.0	5000
FCWA-0159-013	M16	3/8"	-	15.9	13.0	5000
FCWA-0159-019	M16	3/8"	-	15.9	19.0	2500
FCWA-0159-025	M16	3/8"	-	15.9	25.0	2500
FCWA-0174-013	M18	-	-	17.4	13.0	2500
FCWA-0174-019	M18	-	-	17.4	19.0	2000
FCWA-0174-025	M18	-	-	17.4	25.0	2500
FCWA-0191-013	M20	-	3/4"	19.1	13.0	2500
FCWA-0191-019	M20	-	3/4"	19.1	19.0	2500
FCWA-0191-025	M20	-	3/4"	19.1	25.0	2500
FCWA-0199-013	-	-	-	19.9	13.0	2500
FCWA-0199-019	-	-	-	19.9	19.0	2500
FCWA-0199-025	-	-	-	19.9	25.0	2500
FCWA-0206-013	-	1/2"	-	20.6	13.0	2500
FCWA-0206-025	-	1/2"	-	20.6	25.0	1250
FCWA-0206-038	-	1/2"	-	20.6	38.0	1000
FCWA-0214-013	M22	-	-	21.4	13.0	2500
FCWA-0214-025	M22	-	-	21.4	25.0	1250
FCWA-0214-038	M22	-	-	21.4	38.0	1200
FCWA-0222-013	-	5/8"	7/8"	22.2	13.0	5000
FCWA-0222-025	-	5/8"	7/8"	22.2	25.0	2500
FCWA-0222-038	-	5/8"	7/8"	22.2	38.0	1250
FCWA-0238-013	M24	-	-	23.8	13.0	2500
FCWA-0238-025	M24	-	-	23.8	25.0	1250
FCWA-0238-038	M24	-	-	23.8	38.0	1000
FCWA-0246-013	M25	-	-	24.6	13.0	2500
FCWA-0246-025	M25	-	-	24.6	25.0	1000
FCWA-0246-038	M25	-	-	24.6	38.0	1000
FCWA-0254-013	-	-	1"	25.4	13.0	2500
FCWA-0254-025	-	-	1"	25.4	25.0	1000
FCWA-0254-038	-	-	1"	25.4	38.0	1250
FCWA-0263-013	M27	3/4"	-	26.3	13.0	2500
FCWA-0263-025	M27	3/4"	-	26.3	25.0	1250
FCWA-0263-038	M27	3/4"	-	26.3	38.0	1000
FCWA-0269-013	M27	-	-	26.9	13.0	3000
FCWA-0269-025	M27	-	-	26.9	25.0	1500
FCWA-0269-038	M27	-	-	26.9	38.0	1250
FCWA-0286-025	M30	7/8"	1 1/8"	28.6	25.0	1000
FCWA-0286-038	M30	7/8"	1 1/8"	28.6	38.0	500
FCWA-0286-050	M30	7/8"	1 1/8"	28.6	50.0	500
FCWA-0302-025	-	7/8"	-	30.2	25.0	1000
FCWA-0302-038	-	7/8"	-	30.2	38.0	1000

CONTINUED ON NEXT PAGE

## Flexicaps *CONTINUED*

SR 1044



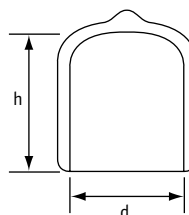
**SPLIT PACKS AVAILABLE**

Part Number	To Fit Thread Size			Dimensions (mm)		Std Pack Qty
	Metric	BSP	UNF	d	h	
FCWA-0302-050	-	7/8"	-	30.2	50.0	750
FCWA-0318-025	-	1"	1 1/4"	31.8	25.0	1000
FCWA-0318-038	-	1"	1 1/4"	31.8	38.0	700
FCWA-0318-050	-	1"	1 1/4"	31.8	50.0	750
FCWA-0330-038	-	-	-	33.0	38.0	500
FCWA-0349-025	M35	-	1 3/8"	34.9	25.0	1000
FCWA-0349-038	M35	-	1 3/8"	34.9	38.0	650
FCWA-0349-050	M35	-	1 3/8"	34.9	50.0	500
FCWA-0381-025	M39	-	1 1/2"	38.1	25.0	1000
FCWA-0381-038	M39	-	1 1/2"	38.1	38.0	600
FCWA-0381-050	M39	-	1 1/2"	38.1	50.0	500
FCWA-0413-025	M42	1 1/4"	-	41.3	25.0	900
FCWA-0413-038	M42	1 1/4"	-	41.3	38.0	500
FCWA-0413-050	M42	1 1/4"	-	41.3	50.0	400
FCWA-0445-025	M45	1 3/8"	-	44.5	25.0	500
FCWA-0445-038	M45	1 3/8"	-	44.5	38.0	500
FCWA-0445-050	M45	1 3/8"	-	44.5	50.0	400
FCWA-0476-025	M48	1 1/2"	-	47.6	25.0	625
FCWA-0476-038	M48	1 1/2"	-	47.6	38.0	400

Part Number	To Fit Thread Size			Dimensions (mm)		Std Pack Qty
	Metric	BSP	UNF	d	h	
FCWA-0476-050	-	1 1/2"	-	47.6	50.0	350
FCWA-0508-025	-	-	2"	50.8	25.0	550
FCWA-0508-038	-	-	2"	50.8	38.0	400
FCWA-0508-050	-	-	2"	50.8	50.0	200
FCWA-0539-038	-	1 3/4"	-	53.9	38.0	400
FCWA-0539-050	-	1 3/4"	-	53.9	50.0	200
FCWA-0572-038	M58	2 1/4"	-	57.2	38.0	250
FCWA-0572-050	M58	2 1/4"	-	57.2	50.0	200
FCWA-0603-038	-	2 3/8"	-	60.3	38.0	250
FCWA-0603-050	-	2 3/8"	-	60.3	50.0	250
FCWA-0635-038	-	2 1/2"	-	63.5	38.0	250
FCWA-0635-050	-	2 1/2"	-	63.5	50.0	125
FCWA-0667-038	-	-	-	66.7	38.0	150
FCWA-0667-050	-	-	-	66.7	50.0	125
FCWA-0698-038	-	-	-	69.8	38.0	250
FCWA-0698-050	-	-	-	69.8	50.0	200
FCWA-0762-038	-	3"	-	76.2	38.0	200
FCWA-0762-050	-	3"	-	76.2	50.0	150

### Type 2: Red Flexible PVC (60 Shore)

- Softer, more flexible PVC allows easy fitting
- Bright red gives high visibility, reducing health and safety risks

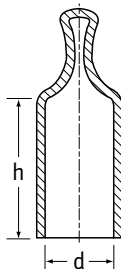


Part Number	To Fit Thread Size			Dimensions (mm)		Std Pack Qty
	Metric	BSP	UNF	d	h	
FCZF-0077-013	M8	-	5/16"	7.7	13.0	5000
FCZF-0079-013	-	-	-	7.9	13.0	5000
FCZF-0087-013	-	-	-	8.7	13.0	5000
FCZF-0095-013	-	-	-	9.5	13.0	5000
FCZF-0103-013	-	-	-	10.3	13.0	5000
FCZF-0111-013	M12	-	7/16"	11.1	13.0	5000
FCZF-0119-013	M12	-	1/2"	11.9	13.0	5000
FCZF-0127-013	M14	1/4"	1/2"	12.7	13.0	5000
FCZF-0138-013	M14	-	-	13.8	13.0	5000
FCZF-0143-013	M15	-	-	14.3	13.0	5000
FCZF-0152-013	-	-	-	15.2	13.0	5000
FCZF-0159-013	M16	3/8"	-	15.9	13.0	5000
FCZF-0174-013	M18	-	-	17.4	13.0	2500
FCZF-0191-025	M20	-	3/4"	19.1	25.0	2500
FCZF-0206-025	-	1/2"	-	20.6	25.0	1250
FCZF-0214-025	M22	-	-	21.4	25.0	1250
FCZF-0222-025	-	5/8"	7/8"	22.2	25.0	1250

Part Number	To Fit Thread Size			Dimensions (mm)		Std Pack Qty
	Metric	BSP	UNF	d	h	
FCZF-0238-025	M24	-	-	23.8	25.0	1250
FCZF-0246-025	M25	-	-	24.6	25.0	1000
FCZF-0254-025	-	-	1"	25.4	25.0	1000
FCZF-0263-025	M27	3/4"	-	26.3	25.0	1250
FCZF-0286-025	M30	7/8"	1 1/8"	28.6	25.0	1000
FCZF-0302-025	-	7/8"	-	30.2	25.0	1000
FCZF-0318-025	-	1"	1 1/4"	31.8	25.0	1000
FCZF-0349-025	M35	-	1 3/8"	34.9	25.0	1000
FCZF-0381-025	M39	-	1 1/2"	38.1	25.0	1000
FCZF-0413-025	M42	1 1/4"	-	41.3	25.0	900
FCZF-0445-025	M45	1 3/8"	-	44.5	25.0	500
FCZF-0476-038	M48	1 1/2"	-	47.6	38.0	400
FCZF-0508-038	-	-	2"	50.8	38.0	400
FCZF-0539-038	M-	1 3/4"	-	53.9	38.0	400
FCZF-0572-038	M58	-	-	57.2	38.0	250
FCZF-0603-038	-	2 3/8"	-	60.3	38.0	250
FCZF-0635-038	-	2 1/2"	-	63.5	38.0	250
FCZF-0698-050	-	-	-	69.8	50.0	200

## Pull-Tab Flexicaps

SR 1066



**Type 1: Black Flexible PVC (80 Shore)**

**Type 2: Red Flexible PVC (60 Shore)**

- Ideal for general-protection purposes
- Pull-tab for easy removal

### Type 1: Black PVC

Part Number	To Fit Thread Size			Dimensions (mm)		Std Pack Qty
	Metric	BSP	UNF	d	h	
PCWA-0036-013	M4	-	-	3.6	13.0	5000
PCWA-0048-013	M4	-	-	4.8	13.0	5000
PCWA-0053-013	M6	-	7/32"	5.3	13.0	5000
PCWA-0061-013	-	-	1/4"	6.1	13.0	5000
PCWA-0075-013	-	-	-	7.5	13.0	5000
PCWA-0075-025	-	-	-	7.5	25.0	5000
PCWA-0077-013	M8	-	5/16"	7.7	13.0	7500
PCWA-0077-025	-	-	-	7.7	25.0	5000
PCWA-0087-013	-	-	-	8.7	13.0	5000
PCWA-0093-013	M10	1/8"	3/8"	9.3	13.0	2500
PCWA-0093-025	-	-	-	9.3	25.0	3000
PCWA-0097-013	-	-	-	9.7	13.0	2500
PCWA-0097-025	-	-	-	9.7	25.0	2500
PCWA-0108-013	-	-	7/16"	10.8	13.0	5000
PCWA-0108-025	-	-	-	10.8	25.0	5000
PCWA-0111-013	-	-	-	11.1	13.0	2500
PCWA-0111-025	-	-	-	11.1	25.0	5000
PCWA-0119-013	M12	-	1/2"	11.9	13.0	5000
PCWA-0119-025	-	-	-	11.9	25.0	3000
PCWA-0124-025	-	1/4"	1/2"	12.4	25.0	5000
PCWA-0124-013	-	1/4"	1/2"	12.4	13.0	5000
PCWA-0132-013	M14	-	17/32"	13.2	13.0	5000
PCWA-0132-025	-	-	-	13.2	25.0	2500
PCWA-0143-025	M15	-	9/16"	14.3	25.0	2500
PCWA-0153-013	M16	-	-	15.3	13.0	2500
PCWA-0153-025	-	-	-	15.3	25.0	2000
PCWA-0159-025	-	3/8"	5/8"	15.9	25.0	2000
PCWA-0163-013	M18	-	11/16"	16.3	13.0	2500
PCWA-0163-025	-	-	-	16.3	25.0	1250
PCWA-0174-013	M18	-	-	17.4	13.0	2500
PCWA-0174-025	M18	-	-	17.4	25.0	2500
PCWA-0188-013	M20	-	3/4"	18.8	13.0	2500
PCWA-0188-025	-	-	-	18.8	25.0	1250
PCWA-0200-013	-	-	-	20.0	13.0	2500
PCWA-0200-025	-	-	-	20.0	25.0	2500
PCWA-0206-013	M22	1/2"	13/16"	20.6	13.0	2500
PCWA-0206-025	-	-	-	20.6	25.0	2000
PCWA-0220-025	-	5/8"	7/8"	22.0	25.0	1500
PCWA-0238-025	-	-	-	23.8	25.0	1500
PCWA-0246-013	M25	-	-	24.6	13.0	1500
PCWA-0246-025	M25	-	-	24.6	25.0	1500
PCWA-0251-025	M26	-	1"	25.1	25.0	1500
PCWA-0269-025	-	-	-	26.9	25.0	1000
PCWA-0286-025	M30	7/8"	11/8"	28.6	25.0	1500
PCWA-0286-038	M30	7/8"	11/8"	28.6	38.0	1500
PCWA-0312-038	M32	1"	13/4"	31.2	38.0	350
PCWA-0349-025	M35	-	13/8"	34.9	25.0	350
PCWA-0349-038	M35	-	13/8"	34.9	38.0	350
PCWA-0381-038	M39	-	13/2"	38.1	38.0	350
PCWA-0381-050	M39	-	13/2"	38.1	50.0	350
PCWA-0408-038	-	-	15/8"	40.8	38.0	350
PCWA-0445-038	M45	13/8"	-	44.5	38.0	350
PCWA-0445-050	M45	13/8"	-	44.5	50.0	350
PCWA-0508-050	-	-	2"	50.8	50.0	200

### Type 2: Red PVC

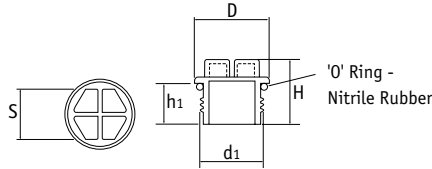
Part Number	To Fit Thread Size			Dimensions (mm)		Std Pack Qty
	Metric	BSP	UNF	d	h	
PCZF-0075-013	-	-	-	7.5	13.0	5000
PCZF-0075-025	M8	-	-	7.5	25.0	5000
PCZF-0077-013	-	-	5/16"	7.7	13.0	7500
PCZF-0077-025	-	-	-	7.7	25.0	5000
PCZF-0087-013	-	-	-	8.7	13.0	5000
PCZF-0087-025	M10	-	-	8.7	13.0	5000
PCZF-0093-013	-	1/8"	3/8"	9.3	13.0	5000
PCZF-0097-013	-	-	-	9.7	13.0	2500
PCZF-0097-025	-	-	-	9.7	25.0	2500
PCZF-0108-013	-	-	7/16"	10.8	13.0	5000
PCZF-0108-025	-	-	-	10.8	25.0	5000
PCZF-0111-013	-	-	-	11.1	13.0	2500
PCZF-0111-025	M12	-	-	11.1	25.0	2500
PCZF-0119-013	-	-	1/2"	11.9	13.0	5000
PCZF-0119-025	-	-	-	11.9	25.0	5000
PCZF-0124-025	M14	1/4"	1/2"	12.4	25.0	5000
PCZF-0132-025	M15	-	9/16"	13.2	25.0	5000
PCZF-0143-025	M16	-	-	14.3	25.0	2500
PCZF-0153-025	-	-	-	15.3	25.0	2000
PCZF-0159-025	M18	-	5/8"	15.9	25.0	2000
PCZF-0174-013	M18	-	-	17.4	13.0	2500
PCZF-0174-025	M20	-	-	17.4	25.0	2500
PCZF-0188-013	-	-	3/4"	18.8	13.0	2500
PCZF-0188-025	-	-	-	18.8	25.0	1250
PCZF-0200-013	-	-	-	20.0	13.0	2500
PCZF-0200-025	M22	-	-	20.0	25.0	2500
PCZF-0206-013	-	1/2"	13/16"	20.6	13.0	2500
PCZF-0206-025	-	-	-	20.6	25.0	2000
PCZF-0220-025	-	5/8"	7/8"	22.0	25.0	2000
PCZF-0238-025	M25	-	-	23.8	25.0	1500
PCZF-0251-025	-	-	1"	25.1	25.0	1500
PCZF-0269-025	M30	-	-	26.9	25.0	1500
PCZF-0286-038	M32	7/8"	11/8"	28.6	38.0	1500
PCZF-0312-038	M35	1"	13/4"	31.2	38.0	500
PCZF-0349-025	M35	-	13/8"	34.9	25.0	350
PCZF-0349-038	M39	-	13/8"	34.9	38.0	350
PCZF-0381-038	M39	-	13/2"	38.1	38.0	350
PCZF-0413-038	M42	11/4"	-	41.3	38.0	350

## O-Ring Threaded Plugs

SR 1125

Yellow HDPE

- Can be applied or removed by spanner, screwdriver or socket; manually or with power tool



### Metric Thread

Part Number	Thread Size (d1)	Dimensions (mm)				Std Pack Qty
		D	H	h1	S	
467087	M8 x 1	12.5	17.0	10.0	6.0	500
467088	M10 x 1	14.5	17.2	10.0	7.0	500
467089	M12 x 1	17.0	17.2	10.0	10.0	500
467090	M10 x 1.5	14.5	19.2	12.0	7.0	500
467091	M12 x 1.5	17.0	19.2	12.0	10.0	500
467092	M14 x 1.5	22.0	19.2	12.0	10.0	500
467093	M16 x 1.5	24.0	20.4	12.0	13.0	500
467094	M18 x 1.5	24.0	20.4	12.0	13.0	500
467095	M20 x 1.5	26.0	20.4	12.0	15.0	250
467096	M22 x 1.5	28.0	20.4	12.0	15.0	250
467097	M24 x 1.5	30.0	20.4	12.0	17.0	250
467098	M26 x 1.5	32.0	20.4	12.0	19.0	250
467100	M30 x 1.5	38.0	20.6	12.0	22.0	250
467101	M32 x 1.5	40.0	20.6	12.0	24.0	250
467102	M36 x 1.5	45.0	20.6	12.0	24.0	100
467103	M38 x 1.5	48.0	20.6	12.0	24.0	100
467106	M27 x 2.0	33.0	24.6	15.0	19.0	250
467107	M30 x 2.0	38.0	24.6	15.0	22.0	250
467108	M33 x 2.0	40.0	24.6	15.0	24.0	250
467109	M36 x 2.0	45.0	24.6	15.0	24.0	100
467110	M42 x 2.0	50.0	24.6	15.0	24.0	100
467111	M45 x 2.0	52.0	25.0	15.0	30.0	100
467112	M48 x 2.0	55.0	25.0	15.0	30.0	100
467113	M52 x 2.0	60.0	25.0	15.0	7.0	100

### UNF Thread

Part Number	Thread Size (d1)	Dimensions (mm)				Std Pack Qty
		D	H	h1	S	
467114	3/8" x 24	14.0	17.2	10.0	7.0	500
467115	7/16" x 20	16.0	19.7	12.5	10.0	500
467116	1/2" x 20	19.0	20.9	12.5	10.0	500
467117	9/16" x 18	21.0	20.9	12.5	10.0	500
467118	5/8" x 18	22.0	20.9	12.5	13.0	500
467119	3/4" x 16	27.0	21.9	13.5	13.0	500
467120	7/8" x 14	28.0	21.9	13.5	15.0	250
467121	1" x 14	31.0	22.1	13.5	17.0	250
467122	1 1/16" x 12	35.0	22.6	14.0	19.0	250
467123	1 3/16" x 12	38.0	22.6	14.0	22.0	250
467124	1 5/16" x 12	42.0	24.0	14.0	24.0	250
467125	1 5/8" x 12	50.0	24.0	14.0	24.0	100
467126	1 7/8" x 12	55.0	24.0	14.0	30.0	100

### BSP Thread

Part Number	Thread Size (d1)	Dimensions (mm)				Std Pack Qty
		D	H	h1	S	
467127	1/8" x 28	16.0	17.2	10.0	7.0	500
467128	1/4" x 19	19.0	19.7	12.5	10.0	500
467129	3/8" x 19	22.0	20.9	12.5	13.0	500
467130	1/2" x 14	27.0	21.9	13.5	15.0	500
467131	5/8" x 14	29.5	21.9	13.5	17.0	500
467132	3/4" x 14	32.0	21.9	13.5	19.0	250
467133	7/8" x 14	37.0	21.9	13.5	22.0	250
467134	1" x 11	40.0	23.6	15.0	24.0	250
467135	1 1/4" x 11	50.0	23.6	15.0	24.0	250
467136	1 1/2" x 11	56.0	25.0	15.0	30.0	100
467137	1 3/4" x 11	62.0	25.0	15.0	36.0	100
467138	2" x 11	68.0	25.0	15.0	36.0	100

## Open Slottex Plugs

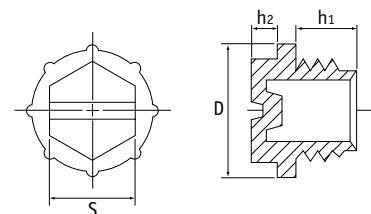
SR 1117

Blue HDPE

- Can be applied or removed by spanner, screwdriver or socket; manually or with power tool



Part Number	To Fit Thread Size	Dimensions (mm)				Std Pack Qty
		D	h1	h2	S	
B-3	7/16"-20	15.8	7.6	4.6	10.9	11000
B-4	1/2"-20	17.3	9.1	4.6	12.7	7500
B-5	9/16"-18	19.1	9.7	4.6	12.7	6000
B-6	5/8"-18	20.6	8.9	4.6	14.2	5000
B-7	3/4"-16	23.9	11.2	4.8	17.3	3500
B-8	7/8"-14	26.9	12.7	6.1	19.1	2100
B-9	1"-14	30.0	10.9	6.4	19.1	2000
B-10	1 1/16"-14	33.3	16.4	6.4	22.1	1200

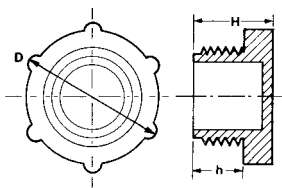




## Threaded Protection Plugs

SR 1002

Red LDPE



- Easy-to-grip head
- Thread ensures secure fit
- Excellent protection from dirt, moisture and corrosion
- Widely used in hydraulic, pneumatic and general engineering industries

### Metric

Part Number	Thread Size	Dimensions (mm)			Std Pack Qty
		D	h	H	
12011	M8 x 1	12.3	9.5	14.3	5000
12012	M10 x 1	15.3	10.4	14.6	5000
12013	M12 x 1	18.5	10.7	16.7	5000
12017*	M12 x 1.5	16.7	8.7	16.3	2500
12018*	M14 x 1.5	18.5	9.5	17.2	5000
12019	M16 x 1.5	22.0	12.5	17.2	3000
10458	M18 x 1.5	23.5	13.5	18.3	4000
12020	M20 x 1.5	26.3	14.0	18.2	3000
10128	M22 x 1.5	28.2	13.7	18.3	3000
12021	M24 x 1.5	31.3	13.8	18.5	2000
12022	M25 x 1.5	31.3	14.0	18.5	2500
12023	M26 x 1.5	32.7	13.8	18.7	2000
12030	M52 x 1.5	63.7	15.5	21.5	500

\* Hexagonal head

### UNF/JIC

Part Number	Thread Size	Dimensions (mm)			Std Pack Qty
		D	h	H	
10498	5/16" x 18	14.5	7.4	12.0	5000
10709	5/16" x 24	14.8	7.4	12.3	5000
10692	3/8 x 24	13.7	9.5	14.0	5000
10763	7/16" x 20	17.4	11.0	16.1	5000
12031	7/16" x 24	17.8	7.1	12.1	5000
10696	1/2" x 20	18.5	10.5	15.3	5000
10668	9/16" x 18	22.6	10.7	15.4	5000
12033	9/16" x 24	18.9	9.0	13.6	5000
10940	5/8" x 18	21.0	10.0	14.8	5000
12965	5/8" x 24	20.7	10.0	14.8	5000
12786	11/16" x 16	25.6	13.5	18.1	3000
10575	3/4" x 16	27.0	13.8	18.7	3000
12827	13/16" x 16	26.7	13.5	18.1	2500
10326	7/8" x 14	28.8	13.6	18.5	2500
12785	1" x 14	32.0	13.2	17.8	2000
10460	1 1/16" x 12	33.4	13.8	18.4	2000
12359	1 1/16" x 14	33.3	13.7	18.3	2000
11506	1 3/16" x 12	36.8	13.5	18.3	1500
10671	1 5/16" x 12	39.3	11.0	16.3	1500
11752	1 5/8" x 12	50.6	12.9	17.3	800
11755	1 7/8" x 12	58.4	16.7	22.5	400
12040	2 1/2" x 12	73.6	15.0	20.6	300

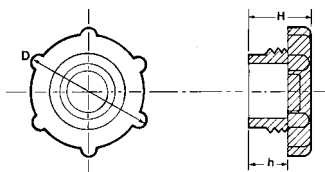
### BSP/Gas

Part Number	Thread Size	Dimensions (mm)			Std Pack Qty
		D	h	H	
10651	1/8" x 28	16.4	4.2	10.5	5000
10588	1/4" x 19	18.8	6.5	12.8	5000
10996	3/8" x 19	22.9	5.5	12.0	5000
10590	1/2" x 14	28.0	10.3	17.3	3000
10511	5/8" x 14	31.3	13.9	18.4	2500
10731	3/4" x 14	32.3	11.0	17.0	2000
11429	7/8" x 14	38.0	13.5	18.1	1500
10810	1" x 11	39.8	10.8	16.9	1500
10459	1 1/4" x 11	49.9	15.0	20.9	800
11242	1 1/2" x 11	55.2	10.8	16.9	600
10496	2" x 11	73.7	10.7	17.5	400
10319	3" x 11	105.0	11.3	16.5	150

## Quick-Fit Threaded Plugs

SR 1009

Red LDPE



### Metric

Part Number	Thread Size	Dimensions (mm)			Std Pack Qty
		D	h	H	
12605	M14 x 1.5	21.5	8.0	12.5	5000
12606	M16 x 1.5	23.6	8.0	12.5	3000
18408	M20 x 1.5	26.0	8.0	13.0	3000
12597	M30 x 2.0	39.9	9.8	14.6	1500
12611	M36 x 2.0	45.6	10.5	21.5	1000
12578	M42 x 2.0	64.7	15.5	21.2	700
12602	M45 x 2.0	57.8	12.7	18.5	700
12612	M52 x 2.0	65.9	15.4	21.3	500

### BSP/Gas

Part Number	Thread Size	Dimensions (mm)			Std Pack Qty
		D	h	H	
10101	1/4" x 19	20.5	6.0	9.2	5000
10102	3/8" x 19	24.1	6.2	9.6	5000
10103	1/2" x 14	30.4	6.1	9.2	3000
10105	5/8" x 14	30.2	6.0	9.2	2500
10106	3/4" x 14	34.0	6.1	9.1	2000
12613	3/4" x 14	33.2	6.8	12.5	2000
10107	1" x 11	40.2	5.7	9.0	1500
12614	1 1/4" x 11	49.5	12.9	18.7	800

### UNF/JIC

Part Number	Thread Size	Dimensions (mm)			Std Pack Qty
		D	h	H	
10108	7/16" x 20	18.5	5.9	9.0	5000
10109	1/2" x 20	20.6	5.9	9.1	5000
10110	9/16" x 18	21.4	5.9	9.0	5000
10119	3/4" x 16	26.7	5.9	9.3	3000
10120	7/8" x 14	29.8	6.2	9.2	2500
11000	1 1/16" x 12	33.9	5.9	9.0	2000
11001	1 5/16" x 12	40.3	6.0	9.4	1500

## Anti-Vibration Plug

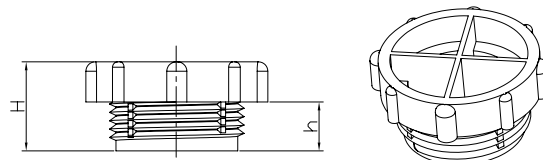
SR 6112

Transparent LDPE

- Ideal for BSP hydraulic fittings
- Notched thread design prevents part coming loose due to vibration
- Transparent colour allows easy inspection of o-ring
- Plug keeps fitting tight against tube collar



Part Number	To fit thread BSP	Dimensions (mm)		Std Pack Qty
		H	h	
110826	1/4" x 19	11.0	5.0	500
110827	3/8" x 19	12.8	6.8	500
110829	1/2" x 14	13.3	7.3	500
110828	5/8" x 14	16.5	10.5	500
110830	3/4" x 14	15.6	9.6	500



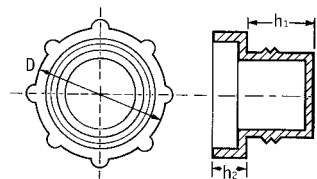
## BSP Threaded Plugs

SR 1054

Red LDPE

- Fits popular BSP sizes
- Very quick fitting and removal
- Ideal for hydraulic couplings

Part Number	To Fit Thread Size	Dimensions (mm)			Std Pack Qty
		D	h1	h2	
10097	1/4" x 19	17.0	4.5	6.0	5000
10098	3/8" x 19	21.0	6.3	6.0	5000
10099	1/2" x 14	27.0	6.8	6.0	3000
10548	5/8" x 14	28.0	9.6	6.0	2500



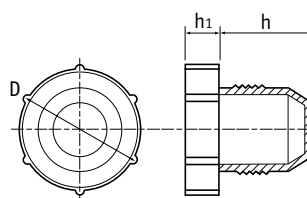
## Threaded Fitting Plugs

SR 1077

Red LDPE

- Knurled head for easy application
- Ideal for sealing 37° flare fittings

Part Number	UNF/JIC Thread Size	Dimensions (mm)			Std Pack Qty
		D	h	h1	
110228	5/16" x 24	13.9	10.7	6.3	12000
110177	3/8" x 24	15.3	11.9	6.4	8500
110178	7/16" x 20	17.2	14.1	6.4	6500
110179	1/2" x 20	17.2	13.7	6.3	6500
110180	9/16" x 18	20.4	12.6	6.4	4500
110181	5/8" x 18	20.8	14.5	6.4	4500
110182	3/4" x 16	24.1	18.6	6.5	2200
110183	7/8" x 14	27.0	21.1	6.5	1800
110184	1 1/16" x 12	34.7	21.8	6.5	1200
110185	1 1/16" x 14	34.0	24.6	6.4	1000
110186	1 5/16" x 12	40.9	23.5	6.3	1400



## Slottex Plugs

SR 1005

Yellow HDPE

- Can be applied or removed with screwdriver, spanner or socket; manually or with power tool



### Metric

Part Number	Thread Size	Dimensions (mm)				Std Pack Qty
		D	H	h	S	
12139	M8 x 1	12.0	14.0	7.0	10.0	5000
12140	M10 x 1	14.0	13.0	6.0	12.0	5000
12141	M12 x 1	16.0	16.0	9.0	13.0	5000
12142	M14 x 1	19.0	17.0	9.0	16.0	3000
12144	M12 x 1.5	16.0	17.0	9.0	13.0	5000
12145	M14 x 1.5	19.0	17.0	9.0	16.0	5000
12146	M16 x 1.5	21.0	19.0	10.0	18.0	3000
12147	M18 x 1.5	24.0	19.0	10.0	20.0	3000
12148	M20 x 1.5	26.0	21.0	12.0	22.0	3000

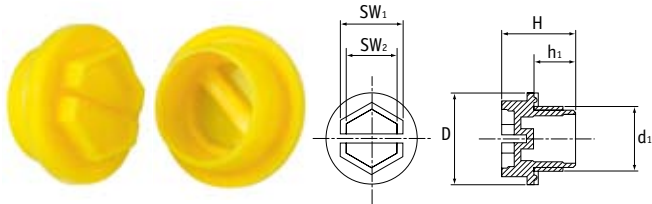
### BSP/Gas

Part Number	Thread Size	Dimensions (mm)				Std Pack Qty
		D	H	h	S	
10503	1/8" x 28	14.0	16.0	9.0	12.0	5000
10504	1/4" x 19	19.0	17.0	9.0	16.0	5000
10505	3/8" x 19	21.0	19.0	10.0	18.0	5000
10506	1/2" x 14	26.0	21.0	12.0	21.5	3000
10507	3/4" x 14	32.0	21.0	12.0	27.5	2000
10508	1" x 11	40.0	21.0	12.0	33.5	1500
10509	1 1/4" x 11	49.0	21.0	12.0	40.0	800

## Sealing Slottex Plugs

SR 1007

Yellow Nylon 6



- Double sealing ring on underside of flange provides positive sealing
- Quick and easy to fit using screwdriver, spanner, socket or allen key
- Can be tightened manually or with power tool
- Head designed not to trap liquid

### Metric Thread

Part Number	Thread Size (d1)	Dimensions (mm)					Std Pack Qty
		D	H	h1	SW1	SW2	
462836	M8 x 1	12.5	15.5	8.0	7.0	4.0	5000
462837	M10 x 1	14.5	16.5	9.0	9.0	6.0	5000
466973	M12 x 1	17.0	16.5	9.0	10.0	7.0	500
466974	M10 x 1.5	14.5	16.5	9.0	9.0	6.0	500
462838	M12 x 1.5	17.0	16.5	9.0	10.0	7.0	5000
462839	M14 x 1.5	19.0	17.5	10.0	13.0	10.0	5000
462840	M16 x 1.5	22.3	17.5	9.3	15.0	12.0	5000
462841	M18 x 1.5	24.0	17.5	9.0	17.0	14.0	3000
462842	M20 x 1.5	26.0	17.5	10.0	19.0	16.0	3000
462843	M22 x 1.5	28.0	17.5	10.0	21.0	18.0	3000
466975	M24 x 1.5	30.0	17.5	10.0	24.0	21.0	500
466976	M26 x 1.5	32.0	20.5	12.0	24.0	21.0	500
466977	M27 x 1.5	33.0	20.5	12.0	24.0	21.0	500
466978	M28 x 1.5	34.0	20.5	12.0	24.0	21.0	500
466979	M30 x 1.5	38.0	20.5	12.0	24.0	21.0	500
466980	M32 x 1.5	40.0	20.5	12.0	24.0	21.0	500
466981	M36 x 1.5	45.0	20.5	12.0	24.0	21.0	500
466982	M38 x 1.5	48.0	20.5	12.0	24.0	21.0	250
466983	M45 x 1.5	52.0	21.5	12.0	30.0	27.0	250
466985	M27 x 2	33.0	22.0	13.5	24.0	21.0	250
466986	M30 x 2	38.0	22.0	13.5	24.0	21.0	250
466987	M33 x 2	40.0	22.0	13.5	24.0	21.0	250
466988	M36 x 2	45.0	22.0	13.5	24.0	21.0	250
466989	M42 x 2	50.0	22.0	13.5	30.0	27.0	250
466990	M45 x 2	52.0	22.0	13.5	30.0	27.0	125
466991	M48 x 2	55.0	23.0	13.5	30.0	27.0	100
466992	M52 x 2	60.0	23.0	13.5	30.0	27.0	100

### BSP Thread

Part Number	Thread Size (d1)	Dimensions (mm)					Std Pack Qty
		D	H	h1	SW1	SW2	
462882	1/8" x 28	16.0	15.5	8.0	12.0	9.0	5000
462848	1/4" x 19	19.0	17.5	10.0	13.0	10.0	5000
462849	3/8" x 19	22.0	17.5	10.0	15.0	12.0	5000
462850	1/2" x 14	27.0	19.5	12.0	19.0	16.0	3000
466993	5/8" x 14	29.5	19.5	12.0	22.0	19.0	500
462851	3/4" x 14	32.0	19.5	12.0	24.0	21.0	2000
466994	7/8" x 14	37.0	19.5	12.0	27.0	24.0	500
462852	1" x 11	40.0	22.5	15.0	30.0	27.0	1000
462853	1 1/4" x 11	50.0	22.5	15.0	36.0	33.0	1000
466995	1 1/2" x 11	56.0	24.0	15.0	41.0	37.0	250
466996	1 3/4" x 11	62.0	24.0	15.0	50.0	46.0	250
466997	2" x 11	68.0	24.0	15.0	55.0	51.0	100

### UNF Thread

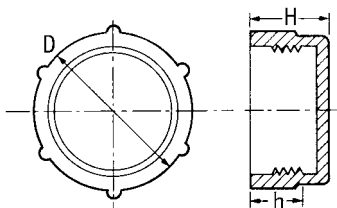
Part Number	Thread Size (d1)	Dimensions (mm)					Std Pack Qty
		D	H	h1	SW1	SW2	
466948	3/8" x 24	16.0	17.5	10.0	9.0	6.0	5000
466949	7/16" x 20	17.0	17.5	10.0	10.0	7.0	5000
466950	3/8" x 24	19.0	17.5	10.0	13.0	10.0	3000
466951	9/16" x 18	20.5	17.5	10.0	13.0	10.0	3000
466952	5/8" x 18	22.0	17.5	10.0	15.0	12.0	3000
466953	3/4" x 16	26.0	17.5	10.0	19.0	16.0	3000
466954	7/8" x 14	28.5	19.5	12.0	21.0	18.0	3000
466955	1" x 14	31.5	19.5	12.0	24.0	21.0	1000
466956	1 1/16" x 12	33.0	19.5	12.0	24.0	21.0	1000
466958	1 5/16" x 12	40.0	22.5	15.0	30.0	27.0	1000
466959	1 5/8" x 12	47.5	22.5	15.0	36.0	33.0	500
466960	1 7/8" x 12	54.0	22.5	15.0	36.0	33.0	500

## Threaded Protection Caps

SR 1018

Red LDPE

- Used throughout the automotive, fluid power and engineering industries
- Protect threaded components from dust, moisture and damage



### BSP/Gas

Part Number	Thread Size	Dimensions (mm)			Std Pack Qty
		D	H	h	
10392	1/8" x 28	11.8	12.0	6.5	500
10559	1/4" x 19	14.8	11.0	8.0	500
10104	3/8" x 19	18.7	11.3	7.4	500
10198	1/2" x 14	23.2	13.5	7.0	500
11157	5/8" x 14	25.4	15.7	10.0	500
10205	3/4" x 14	29.4	17.7	11.2	250
10970	7/8" x 14	32.4	19.5	12.5	150
10204	1" x 11	36.0	19.0	14.5	100
10167	1 1/4" x 11	44.4	19.8	13.0	100
10432	1 1/2" x 11	50.3	20.5	14.0	100
10968	2" x 11	61.9	21.0	15.0	100
12954	2 1/4" x 11	71.5	25.0	17.5	50
12905	2 1/2" x 11	77.9	27.6	19.0	50

### Metric

Part Number	Thread Size	Dimensions (mm)			Std Pack Qty
		D	H	h	
12100	M8 x 1	9.9	10.0	7.0	500
12101	M10 x 1	11.9	10.0	7.5	500
12102	M12 x 1	13.8	12.0	9.5	500
12103	M12 x 1.5	14.0	12.0	9.5	500
12104	M14 x 1.5	15.9	12.0	9.5	500
12650	M14 x 1.5	16.0	20.6	9.2	500
12105	M16 x 1.5	17.9	12.0	9.5	500
12651	M16 x 1.5	18.0	21.0	9.0	500
12106	M18 x 1.5	19.7	14.0	9.5	500
12107	M20 x 1.5	21.9	14.0	9.5	500
12108	M22 x 1.5	24.3	13.8	11.5	500
12845	M22 x 1.5	24.4	24.5	17.5	250
12109	M24 x 1.5	26.2	14.0	11.5	250
12110	M25 x 1.5	27.2	14.0	11.5	250
12111	M26 x 1.5	28.3	14.0	11.5	250
12967	M28 x 1.5	32.0	14.0	12.4	250
12122	M30 x 2	34.0	14.0	11.5	150
12123	M36 x 2	38.8	16.0	13.5	150
12124	M42 x 2	44.5	16.0	13.5	100
12126	M52 x 2	54.7	16.0	13.5	100

### UNF/JIC

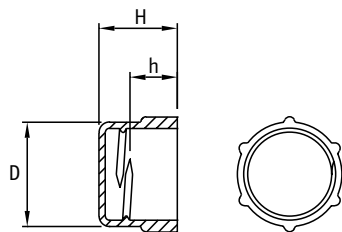
Part Number	Thread Size	Dimensions (mm)			Std Pack Qty
		D	H	h	
10251	3/8" x 24	11.0	8.3	4.0	500
12652	7/16" x 24	13.3	13.7	7.8	500
10332	7/16" x 20	13.3	12.9	8.0	500
10528	1/2" x 20	14.5	13.5	9.5	500
11041	9/16" x 18	16.5	13.5	9.5	500
10653	5/8" x 18	18.2	15.6	7.5	500
12847	3/4" x 16	21.7	13.8	9.5	500
12825	13/16" x 16	23.3	15.3	9.3	250
11089	7/8" x 14	24.9	20.2	14.0	250
12075	7/8" x 18	25.3	20.0	14.0	250
12826	1" x 14	27.6	17.2	12.0	250
10685	1 1/16" x 12	29.4	19.0	11.0	200
10163	1 3/16" x 12	32.7	19.1	13.0	150
10151	1 5/16" x 12	36.4	22.2	14.5	100
12654	1 3/8" x 12	37.4	24.5	10.5	100
10185	1 7/16" x 12	38.9	21.7	15.2	100
11053	1 5/8" x 12	44.8	22.0	14.0	100
11804	1 7/8" x 12	50.3	25.0	15.0	100

## Quick-Fit Caps

SR 1161

Red LDPE

- Fewer thread forms allow quick application



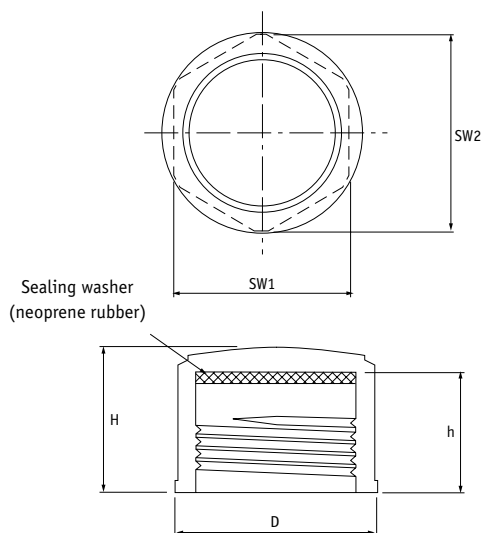
Part Number	Thread Size	Dimensions (mm)			Std Pack Qty
		D	H	h	
464147	M12 x 1.5	14.0	12.0	7.5	5000
464148	M14 x 1.5	16.0	12.0	7.5	5000
464150	M16 x 1.5	18.0	12.0	7.5	5000
464151	M16 x 1.5	18.0	21.0	6.5	5000
464152	M18 x 1.5	20.0	14.0	9.5	4000
464153	M20 x 1.5	22.0	14.0	9.5	4000
464154	M22 x 1.5	24.5	14.0	9.5	2000
464155	M24 x 1.5	26.5	14.0	9.5	2000
464156	M26 x 1.5	28.5	14.0	9.5	2000
464157	M28 x 1.5	32.0	14.0	9.5	2000
464158	M30 x 2.0	34.0	14.0	9.0	1500

## Threaded Sealing Caps

SR 1126

Yellow HDPE

- Tough HDPE material reduces potential shearing
- Internal neoprene rubber sealing disk, which limits fluid leakage
- Recommended to be tightened by hand
- Hexagonal head enables the cap to be applied or removed by spanner or socket at a low torque



### Metric

Part Number	To Fit Thread Size	Dimensions (mm)					Std Pack Qty
		D	H	h	SW <sub>1</sub>	SW <sub>2</sub>	
467033	M8 x 1	12.0	13.0	11.0	10.0	11.0	500
467034	M10 x 1	14.2	13.0	11.0	12.0	13.2	500
467035	M12 x 1	16.5	13.0	11.0	14.0	15.4	500
467036	M12 x 1.5	16.5	15.0	13.0	14.0	15.4	500
467037	M14 x 1.5	18.5	15.0	13.0	16.0	17.5	500
467038	M16 x 1.5	21.0	15.0	13.0	18.0	19.7	500
467039	M18 x 1.5	23.0	15.0	13.0	20.0	21.9	500
467040	M20 x 1.5	25.0	15.0	13.0	22.0	24.1	500
467041	M22 x 1.5	27.5	15.0	13.0	24.0	26.3	250
467042	M24 x 1.5	30.0	15.0	13.0	26.0	28.5	250
467043	M25 x 1.5	31.0	15.0	13.0	27.0	29.6	250
467044	M26 x 1.5	32.0	15.0	13.0	28.0	30.7	250
467045	M28 x 1.5	34.0	15.0	13.0	30.0	32.9	250
467046	M30 x 1.5	36.5	15.0	13.0	32.0	35.1	250
467047	M30 x 2	36.5	17.0	15.0	32.0	35.1	250
467048	M36 x 1.5	44.5	16.0	14.0	39.0	42.8	100
467049	M36 x 2	44.5	18.0	16.0	39.0	42.8	100
467050	M42 x 2	51.0	18.5	16.0	45.0	49.4	100
467051	M42 x 1.5	54.5	16.5	14.0	48.0	52.6	100
467052	M45 x 2	54.5	18.5	16.0	48.0	52.6	100
467053	M52 x 2	62.0	18.5	16.0	55.0	60.3	100

### UNF

Part Number	To Fit Thread Size	Dimensions (mm)					Std Pack Qty
		D	H	h	SW <sub>1</sub>	SW <sub>2</sub>	
467054	1/4" x 28	10.0	13.5	11.5	8.0	8.8	500
467055	3/8" x 24	13.0	14.5	12.5	11.0	12.1	500
467056	7/16" x 24	15.5	14.5	12.5	13.0	14.3	500
467057	7/16" x 20	15.5	15.0	13.0	13.0	14.3	500
467058	1/2" x 20	17.5	15.0	13.0	15.0	16.5	500
467059	9/16" x 18	18.5	15.5	13.5	16.0	17.5	500
467060	5/8" x 18	21.0	15.5	13.5	18.0	19.7	500
467061	3/4" x 16	24.0	16.5	14.5	21.0	23.0	500
467062	13/16" x 16	26.5	16.5	14.5	23.0	25.2	500
467063	7/8" x 18	27.5	15.5	13.5	24.0	26.3	500
467064	7/8" x 14	27.5	17.5	15.5	24.0	26.3	250
467065	1" x 14	31.0	17.5	15.5	27.0	29.6	250
467066	1 1/16" x 12	34.5	18.5	16.5	30.0	32.9	250
467067	1 3/16" x 12	36.5	18.5	16.5	32.0	35.1	250
467068	1 5/16" x 12	41.0	18.5	16.5	36.0	39.5	250
467069	1 3/8" x 12	43.0	18.5	16.5	38.0	41.7	250
467070	1 7/16" x 12	45.5	18.5	16.5	40.0	43.9	250
467071	1 5/8" x 12	51.0	19.0	16.5	45.0	49.4	100
467072	1 3/4" x 16	54.5	17.0	14.5	48.0	52.6	100
467073	1 7/8" x 12	59.0	19.0	16.5	52.0	57.0	100

### BSP

Part Number	To Fit Thread Size	Dimensions (mm)					Std Pack Qty
		D	H	h	SW <sub>1</sub>	SW <sub>2</sub>	
467074	1/8" x 28	14.0	13.0	11.0	12.0	13.2	500
467075	1/4" x 19	17.5	15.0	13.0	15.0	16.5	500
467076	3/8" x 19	22.0	15.0	13.0	19.0	20.8	500
467077	1/2" x 14	25.0	17.0	15.0	22.0	24.1	500
467078	5/8" x 14	29.0	17.0	15.0	25.0	27.4	500
467079	3/4" x 14	32.0	17.0	15.0	28.0	30.7	250
467080	7/8" x 14	36.0	17.0	15.0	32.0	35.1	250
467081	1" x 11	41.0	19.0	17.0	36.0	39.5	250
467082	1 1/4" x 11	51.0	19.0	17.0	45.0	49.4	250
467083	1 1/2" x 11	56.0	19.5	17.0	50.0	54.8	100
467084	2" x 11	71.0	19.5	17.0	63.0	69.1	100
467085	2 1/4" x 11	80.0	19.5	17.0	70.0	76.8	100
467086	2 1/2" x 11	90.0	19.5	17.0	80.0	87.7	100

## Tapered Plug with Lateral Pull Tab

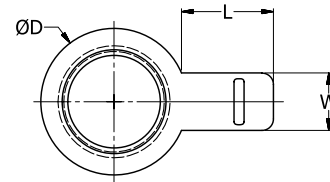
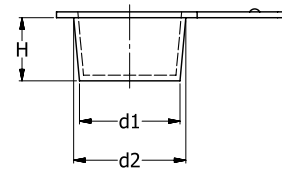
SR 1053

Natural Thermoplastic Rubber

- The soft and flexible material provides a close fit
- The lateral pull tab makes for easy removal
- Suitable for various applications



Part Number	Dimensions (mm)						Std Pack Qty
	d1	d2	D	H	W	L	
494297	5.0	7.0	11.0	9.5	7.0	15.0	5000
494298	6.0	8.0	12.0	9.5	7.0	15.0	5000
494299	7.0	9.5	13.5	9.5	7.0	15.0	5000
494300	8.0	10.0	14.0	9.5	8.0	15.0	5000
494301	9.5	11.5	15.5	9.5	8.0	15.0	5000
494302	10.5	12.5	16.5	9.5	8.0	15.0	5000
494303	11.5	13.5	17.5	9.5	8.0	15.0	5000
494304	12.5	14.5	18.5	10.0	8.0	15.0	5000
494305	13.5	15.5	19.5	10.0	10.0	15.0	5000
494306	14.2	16.2	20.2	10.0	10.0	15.0	5000
494307	14.5	17.0	21.0	10.0	10.0	15.0	2000
494308	15.5	18.0	22.0	10.0	10.0	15.0	2000
494309	17.5	19.5	23.5	10.0	10.0	15.0	2000
494310	19.0	21.5	25.5	11.0	10.0	15.0	2000
494311	21.0	23.5	27.5	11.0	10.0	15.0	2000
494312	22.5	25.5	29.5	12.0	12.0	15.0	2000
494313	25.0	28.0	32.0	12.0	12.0	15.0	2000
494314	29.0	31.5	35.5	12.0	12.0	15.0	2000



## Moss provides a Full Circle solution for your protection and finishing needs:

- All products in stock
- Next day delivery
- The right part for your application
- Friendly, knowledgeable Customer Service representatives

