

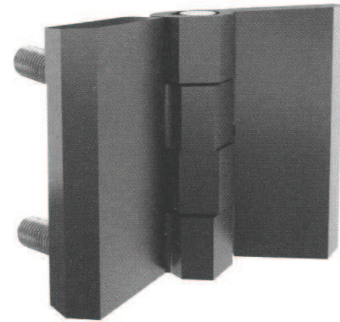
Particular Features:

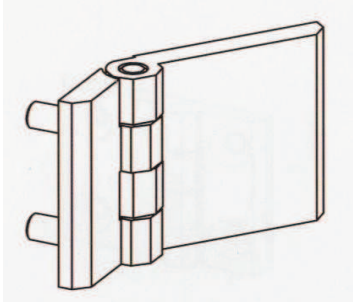
Generally used for plain/flush mounted, isolated, heavy doors
 Stud versions fitted with M8x14mm threaded stud
 Stainless steel (AISI 304) hinge pin
 270° rotation

Application:

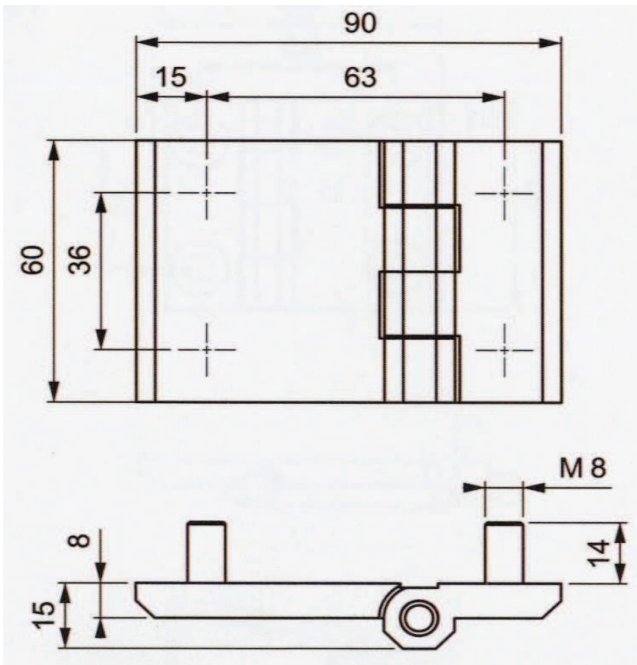
Electric panels, build-in covers

Hinge Rotation Angle



Version	Materials / Finish	Part-No.
	Zamak® DIN-EN1774-ZnAl4Cu1 chrome plated (CrVI-free)	HF40ED-T2
	Zamak® DIN-EN1774-ZnAl4Cu1 black coated (CrVI-free)	HF40EH-T2

Dimensions and Hole Preparation



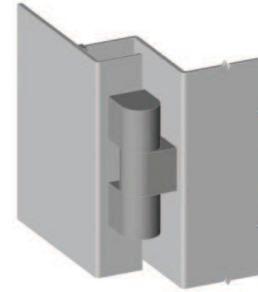
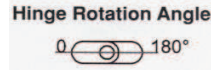
Particular Features:

For medium voltage and heavy door panels.

Chrom plated brass

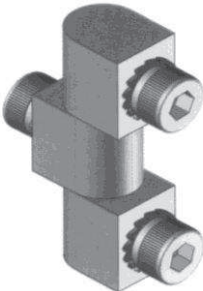
Parts supplied separately

Note: Bolts and washers are given

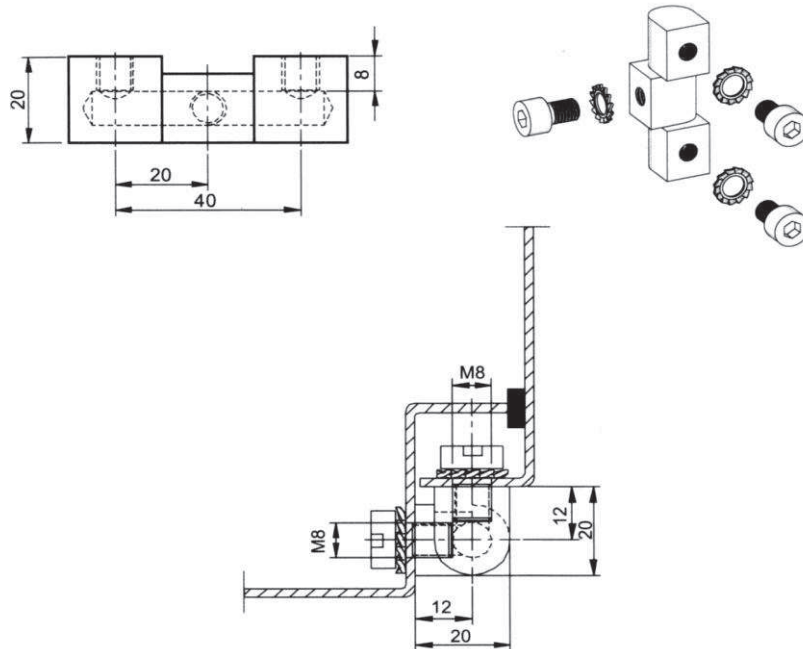


Application:

Electric panels, machinery covers

Version	Materials / Finish	Part-No.
	Brass DIN-17672 CuZn39Pb3 chrome plated (CrVI-free)	HS10MD

Dimensions and Hole Preparation



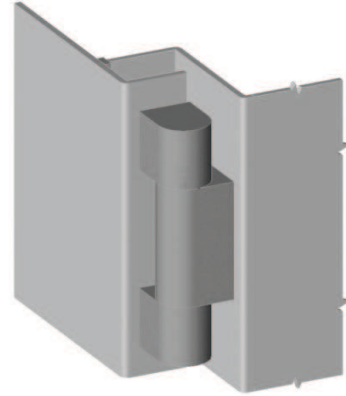
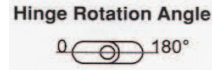
Particular Features:

For medium voltage and heavy door panels.

Chrom plated brass

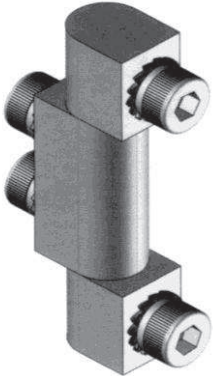
Parts supplied separately

Note: Bolts and washers are given

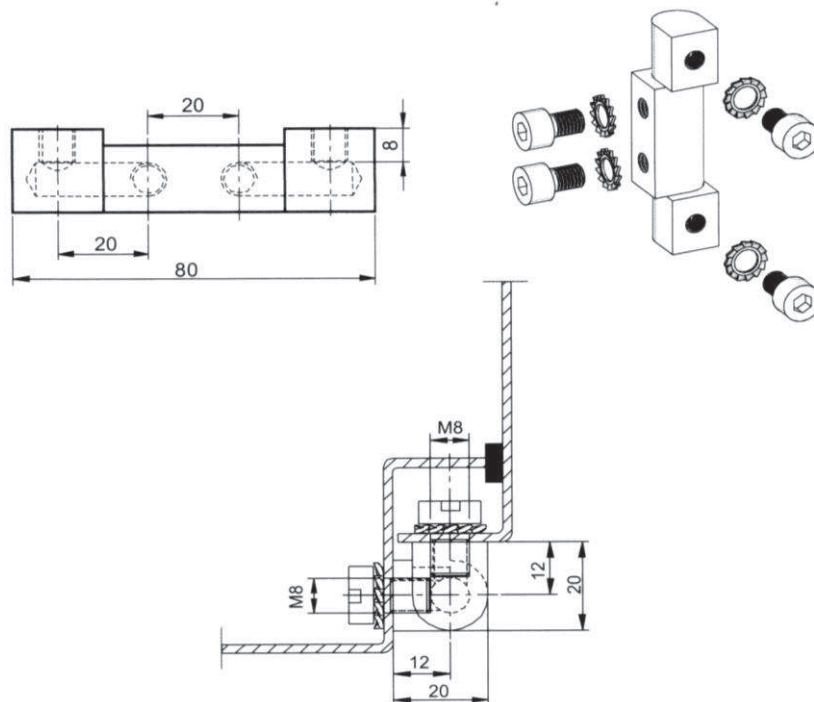


Application:

Electric panels, machinery covers

Version	Materials / Finish	Part-No.
	Brass DIN-17672 CuZn39Pb3 chrome plated (CrVI-free)	HS20MD

Dimensions and Hole Preparation



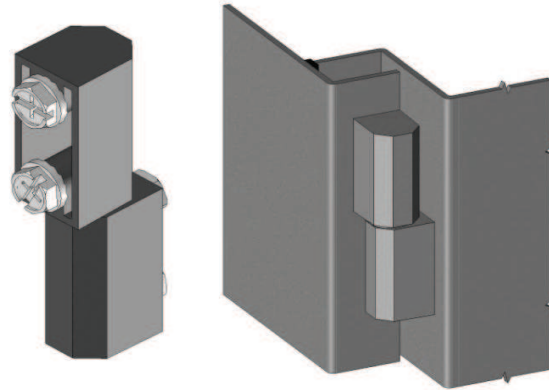
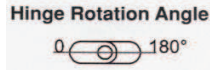
Particular Features:

Lift off hinge

Note: Bolts are given

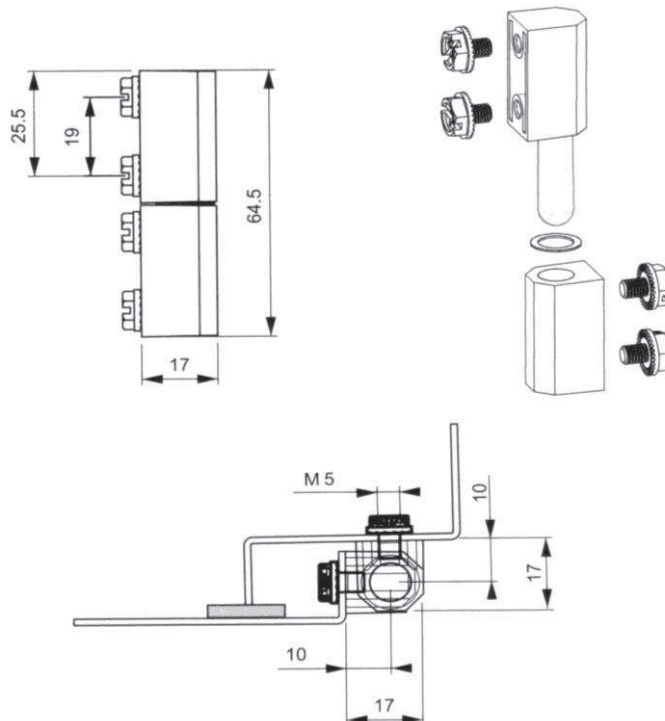
Application:

Electric panels, machinery covers



Version	Materials / Finish	Part-No.
	Zamak® DIN-EN1774-ZnAl4Cu1 chrome plated (CrVI-free)	HS30ED
	Zamak® DIN-EN1774-ZnAl4Cu1 black coated (CrVI-free)	HS30EH

Dimensions and Hole Preparation

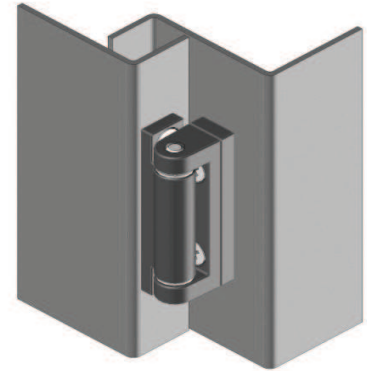
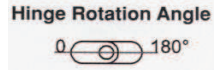


Particular Features:

Spacer available for different dimensions

Stainless steel pin

Note: Bolts are not given

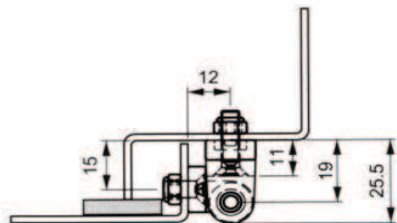
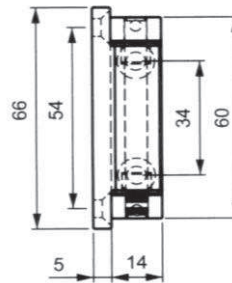
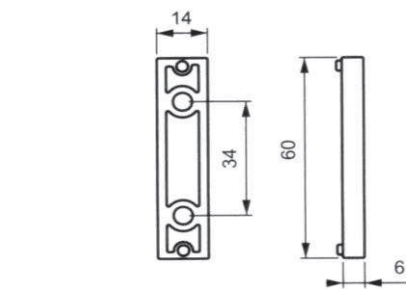


Application:

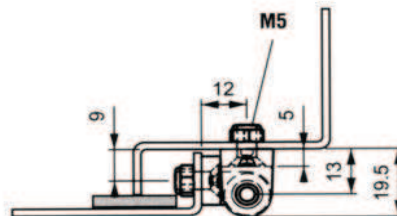
Electric panels, machinery covers

Version	Materials / Finish	Part-No.
	Zamak® / chrome plated height 19,5 mm	HS40ED-19
	Zamak® / chrome plated height 25,5 mm	HS40ED-25
	Zamak® / black height 19,5 mm	HS40EH-19
	Zamak® / black height 25,5 mm	HS40EH-25

Dimensions and Hole Preparation



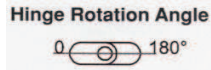
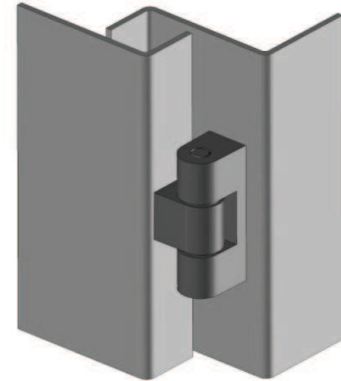
Height 25,5 mm with spacer



Height 19,5 mm without spacer

Particular Features:

- Side mounted hinge
- Stainless steel hinge pin
- Hinge supplied assembled
- Note: Bolts are not given

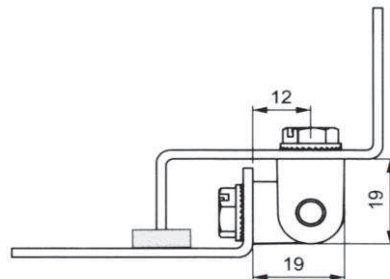
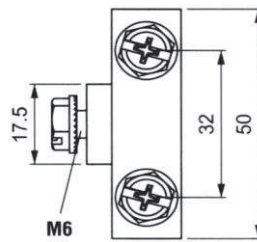


Application:

Electric panels, machinery covers

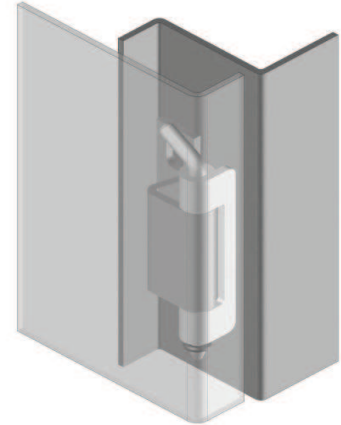
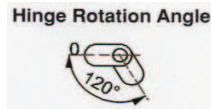
Version	Materials / Finish	Part-No.
	Zamak® DIN-EN1774-ZnAl4Cu1 chrome plated (CrVI-free)	HS50ED
	Zamak® DIN-EN1774-ZnAl4Cu1 black coated (CrVI-free)	HS50EH

Dimensions and Hole Preparation



Particular Features:

- For doors with a bent of 20 mm or 24 mm
- Frame part screwed on
- Door part welded-on
- Left hand and right hand application is possible
- Note: Bolts are not given

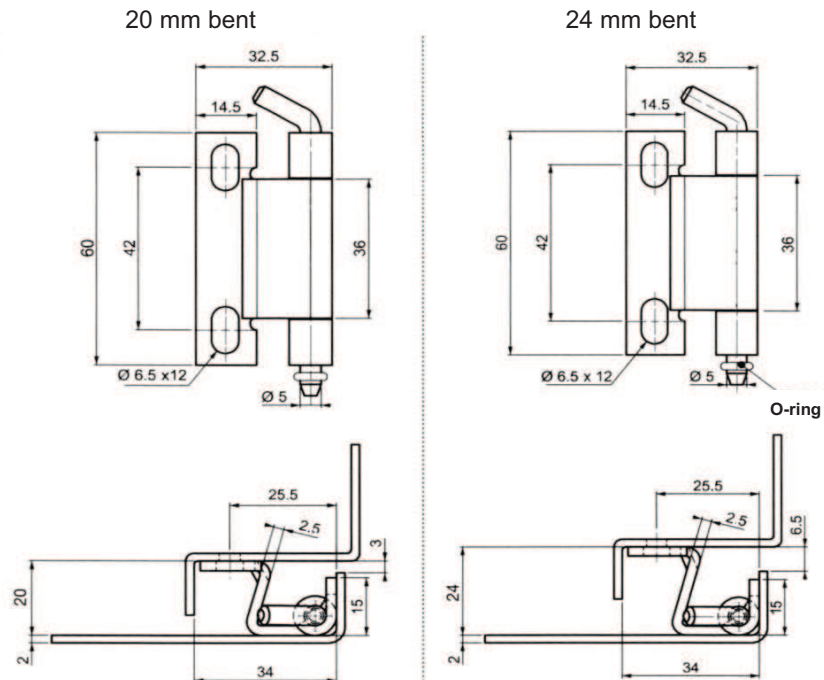


Application:

Electric panels, machinery covers

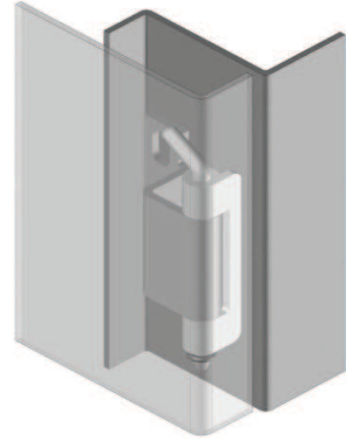
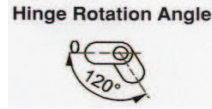
Version	Materials / Finish	Part-No.
	body: steel / zinc plated welding part: copper plated 20 mm bent	HI10AG-T1
	body: steel / zinc plated welding part: copper plated 24 mm bent	HI10AG-T2

Dimensions and Hole Preparation



Particular Features:

- For doors with a bent of 20 mm or 24 mm
- Frame part screwed on
- Door part welded-on
- Left hand and right hand application is possible
- Note: Bolts are not given

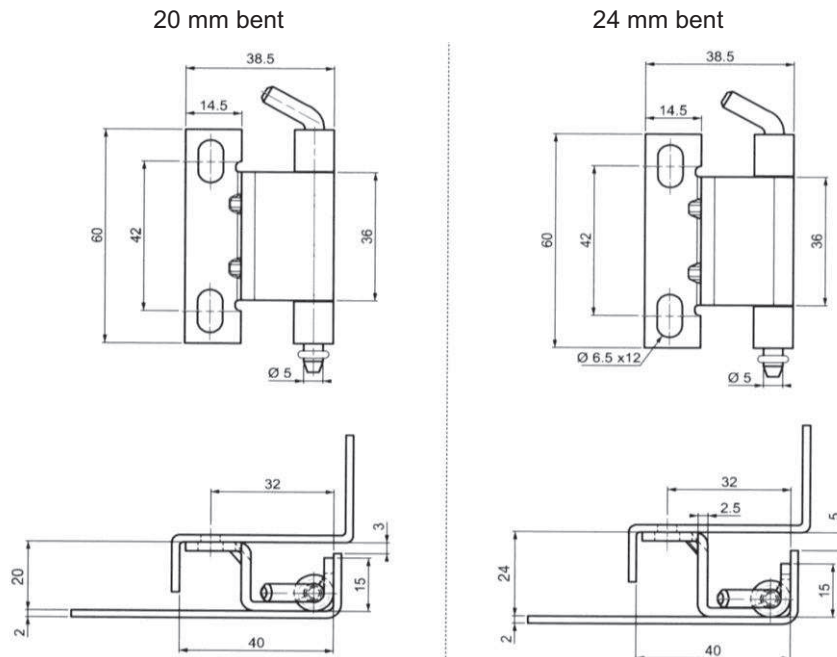


Application:

Electric panels, machinery covers

Version	Materials / Finish	Part-No.
	body: steel / zinc plated welding part: copper plated 20 mm bent	HI10AG-T3
	body: steel / zinc plated welding part: copper plated 24 mm bent	HI10AG-T4

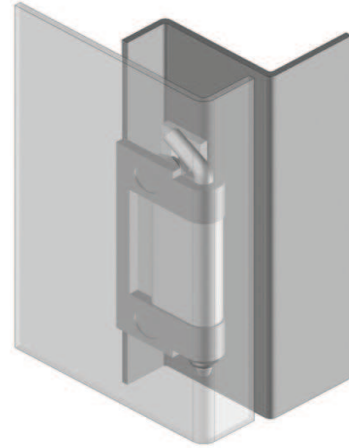
Dimensions and Hole Preparation



Particular Features:

- For doors with a bent of 20 mm or 24 mm
- Frame part screwed on
- Door part welded-on
- Left hand and right hand application is possible
- Note: Bolts are not given

Hinge Rotation Angle

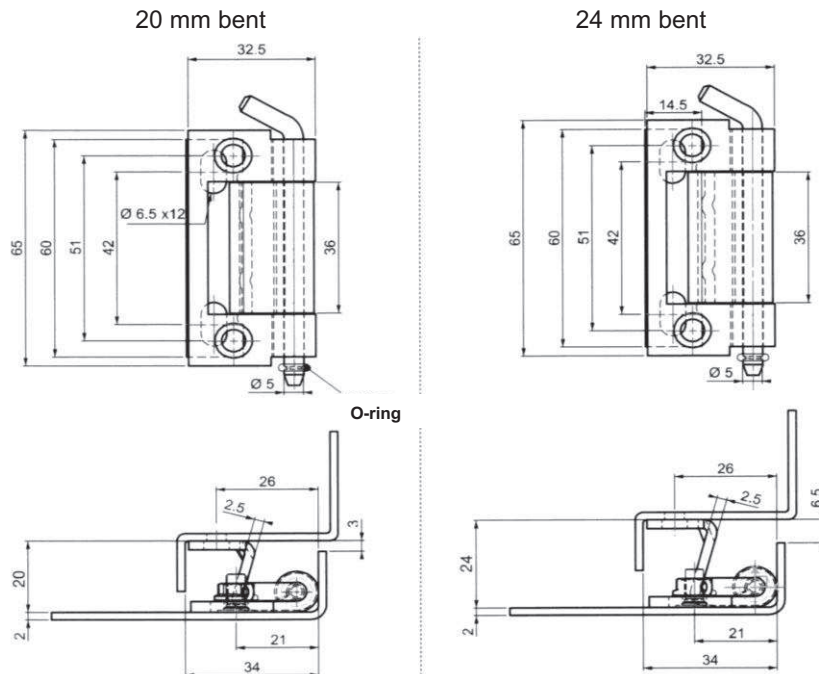


Application:

Electric panels, machinery covers

Version	Materials / Finish	Part-No.
	steel / zinc plated 20 mm bent	HI20AG-T1
	steel / zinc plated 24 mm bent	HI20AG-T2

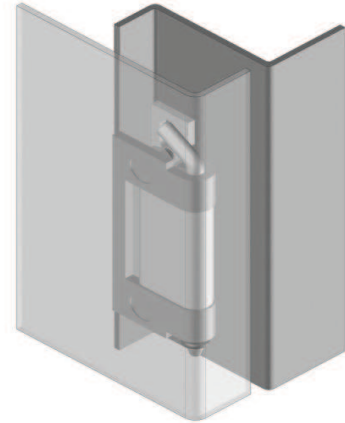
Dimensions and Hole Preparation



Particular Features:

- For doors with a bent of 20 mm or 24 mm
- Frame part screwed on
- Door part welded-on
- Left hand and right hand application is possible
- Note: Bolts are not given

Hinge Rotation Angle

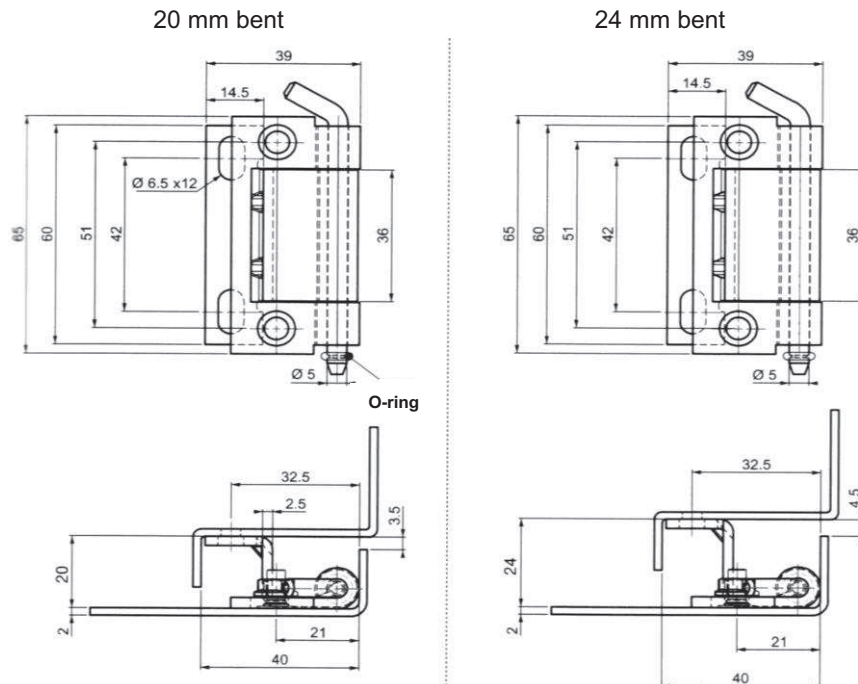


Application:

Electric panels, machinery covers

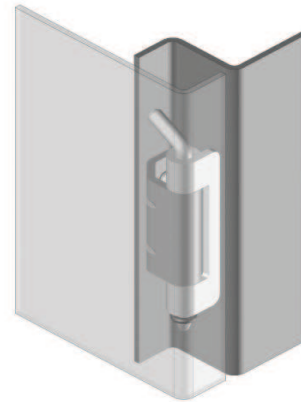
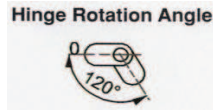
Version	Materials / Finish	Part-No.
	steel / zinc plated 20 mm bent	HI20AG-T3
	steel / zinc plated 24 mm bent	HI20AG-T4

Dimensions and Hole Preparation




Particular Features:

- For doors with a bent of 18 mm
- Frame part screwed on
- Door part screwed or welded-on
- Left hand and right hand application is possible
- Note: Bolts are given

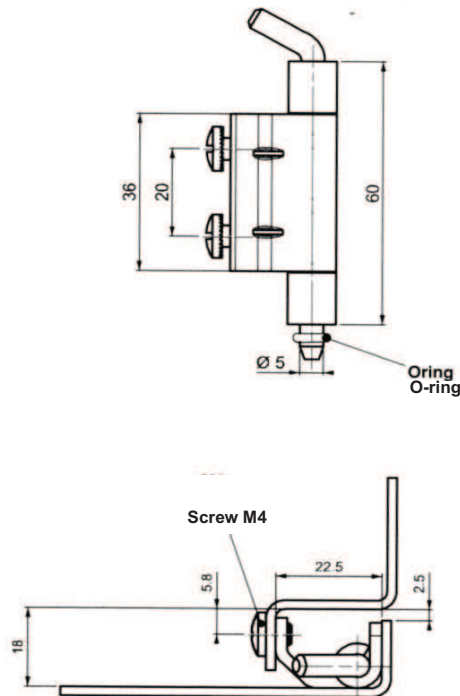


Application:

Electric panels, machinery covers

Version	Materials / Finish	Part-No.
	body: steel / zinc plated welding part: copper plated 18 mm bent	HI30AG-T1
	stainless steel 18 mm bent	HI30B-T1

Dimensions and Hole Preparation



Particular Features:

For doors with a bent of 18,5 mm

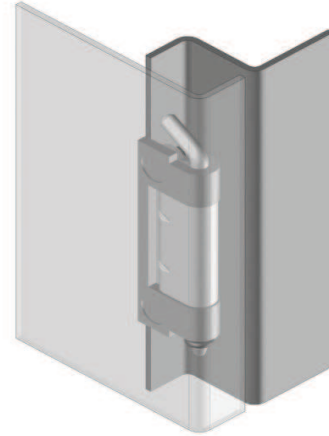
Frame part screwed on

Door part is mounted by nut to welded stud on door

Left hand and right hand application is possible


Note: Bolts are given

Hinge Rotation Angle

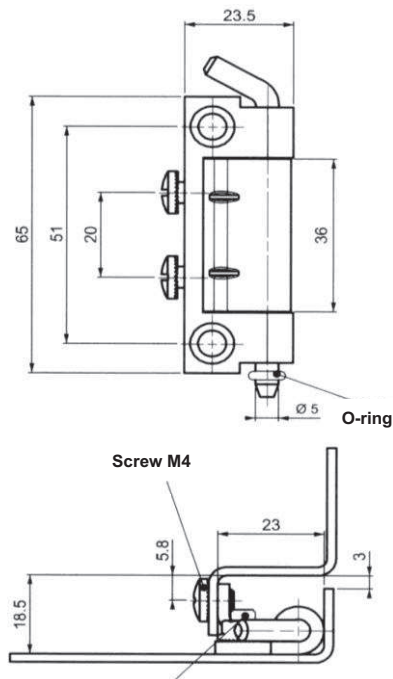


Application:

Electric panels, machinery covers

Version	Materials / Finish	Part-No.
	steel / zinc plated 18,5 mm bent	HI30AG-T2

Dimensions and Hole Preparation



Particular Features:

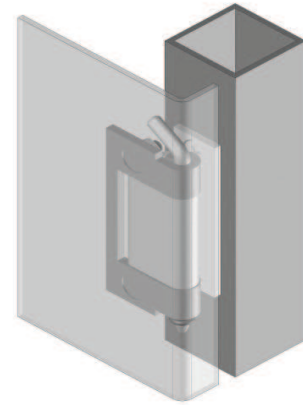
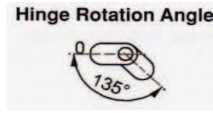
For doors with a bent of 20 mm to fix profiles

Frame part screwed on

Door part is mounted by nut to welded stud on door


Left hand and right hand application is possible

Note: Bolts are not given

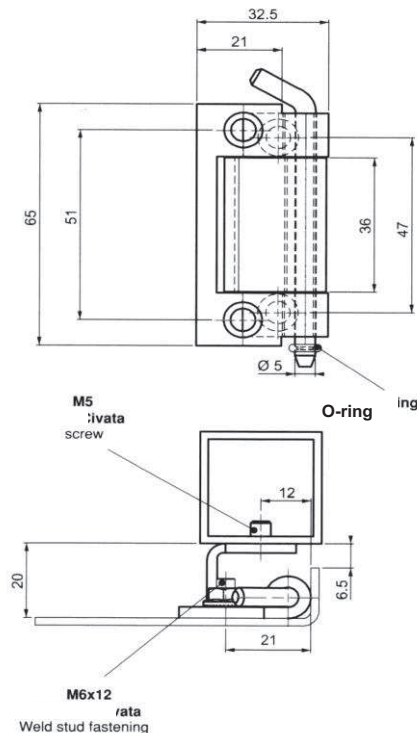


Application:

Electric panels, machinery covers

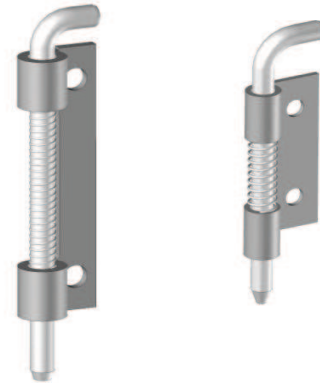
Version	Materials / Finish	Part-No.
	steel / zinc plated 20 mm bent	HI40AG

Dimensions and Hole Preparation



Particular Features:

- For internally mounted doors
- Spring loaded hinge for easy door removal
- Screw-on or welded-on
- Assembled right hand (RH) as drawn
- Assembled left hand (LH) mirror inverted
- Note: Bolts are not given



Application:

Electric panels, machinery covers

Version	Materials / Finish	Part-No.
	steel / zinc plated	HI50AG-T1-RH HI50AG-T1-LH
	steel / zinc plated	HI50AG-T2-RH HI50AG-T2-LH

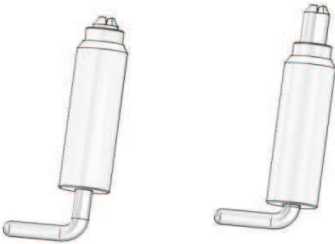
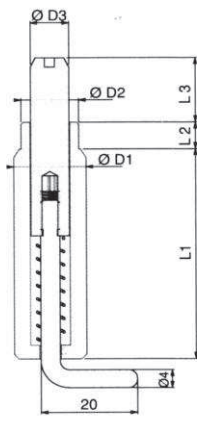
Particular Features:

- For internally mounted doors
- Spring loaded hinge for easy door removal
- Screw-on or welded-on
- Left hand and right hand application is possible



Application:

Electric panels, machinery covers

Version	Materials / Finish	Part-No.
 	steel / body copper plated, other parts zinc plated	HI60AG-T*

add version to article number

* Version	D1	D2	D3	L1	L2	L3
1	10	8,5	6	26,5	3,5	10
2	10	8,5	6	38	3,5	10
3	12	9	6	38	3,5	10
4	15	12	9	47	6	14,5

Particular Features:

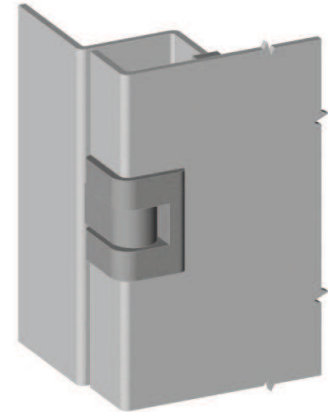
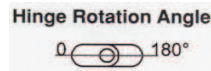
Corner hinge

Suitable for steel panels with a thickness of 1,0 mm to 2,2 mm

Hinge pin available in three types

Application:

Small electric panels

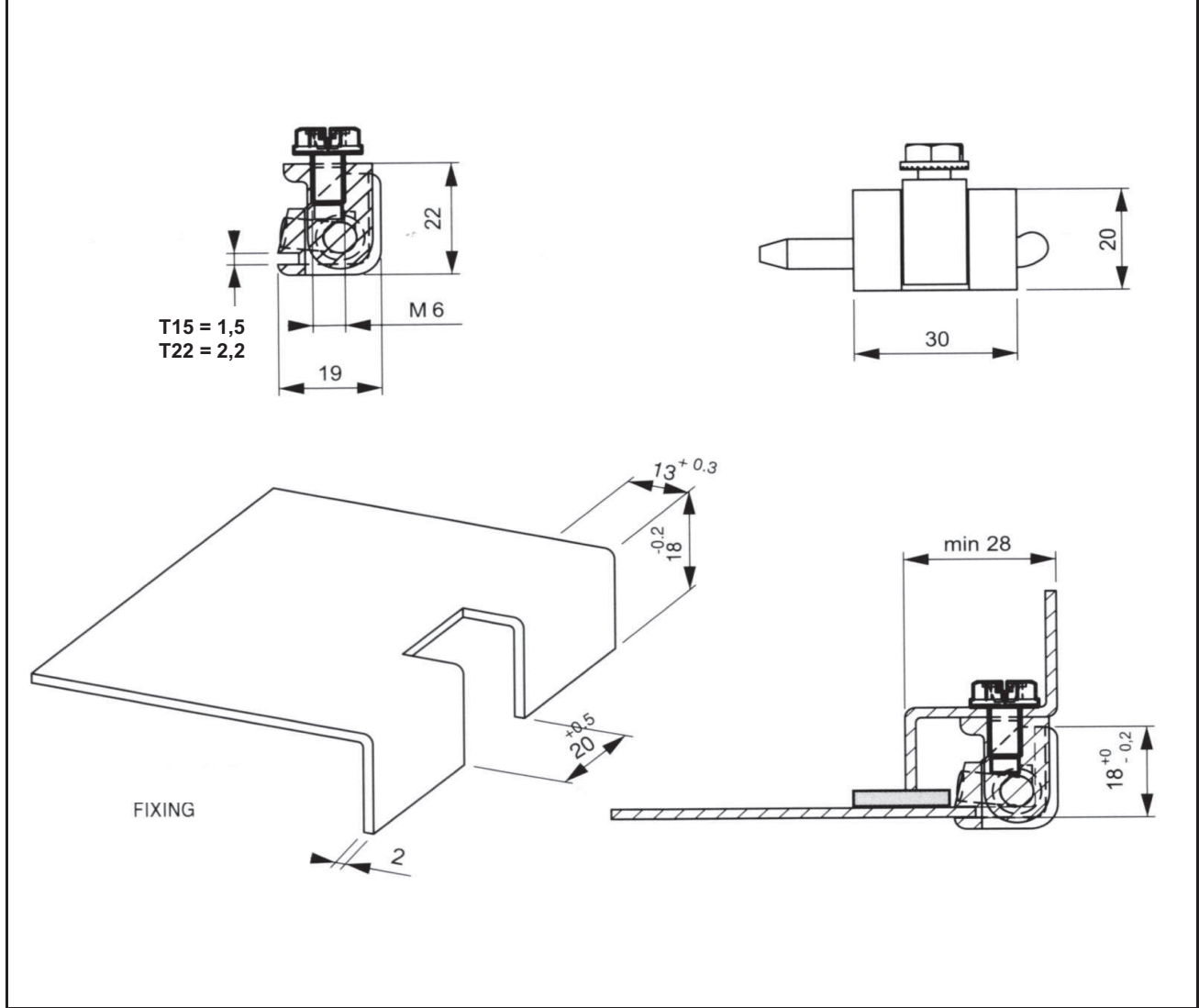


Version	Materials / Finish	Part-No.
	Zamak® / chrome 1,0 mm - 1,2 mm panel thickness	HC10ED-*-T15
	Zamak® / black 1,0 mm - 1,2 mm panel thickness	HC10EH-*-T15
	Zamak® / chrome 1,5 mm - 2,0 mm panel thickness	HC10ED-*-T22
	Zamak® / black 1,5 mm - 2,0 mm panel thickness	HC10EH-*-T22

add version to article number

* Version	PIN	Materials / Finish
*A		Poliasetal (Delrin)
*B		steel / zinc plated
*C		steel / zinc plated

Dimensions and Hole Preparation



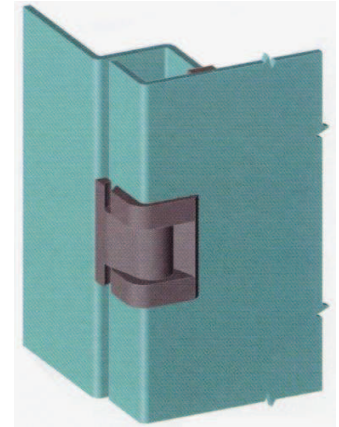
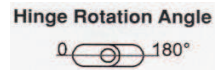
Particular Features:

Corner hinge

Cut out helps provide greater resistance than HC10

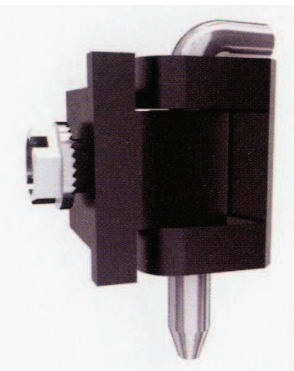
Suitable for steel panels with a thickness of 1,5 mm to 2,2 mm

Hinge pin available in three types



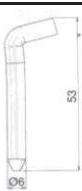


Application:

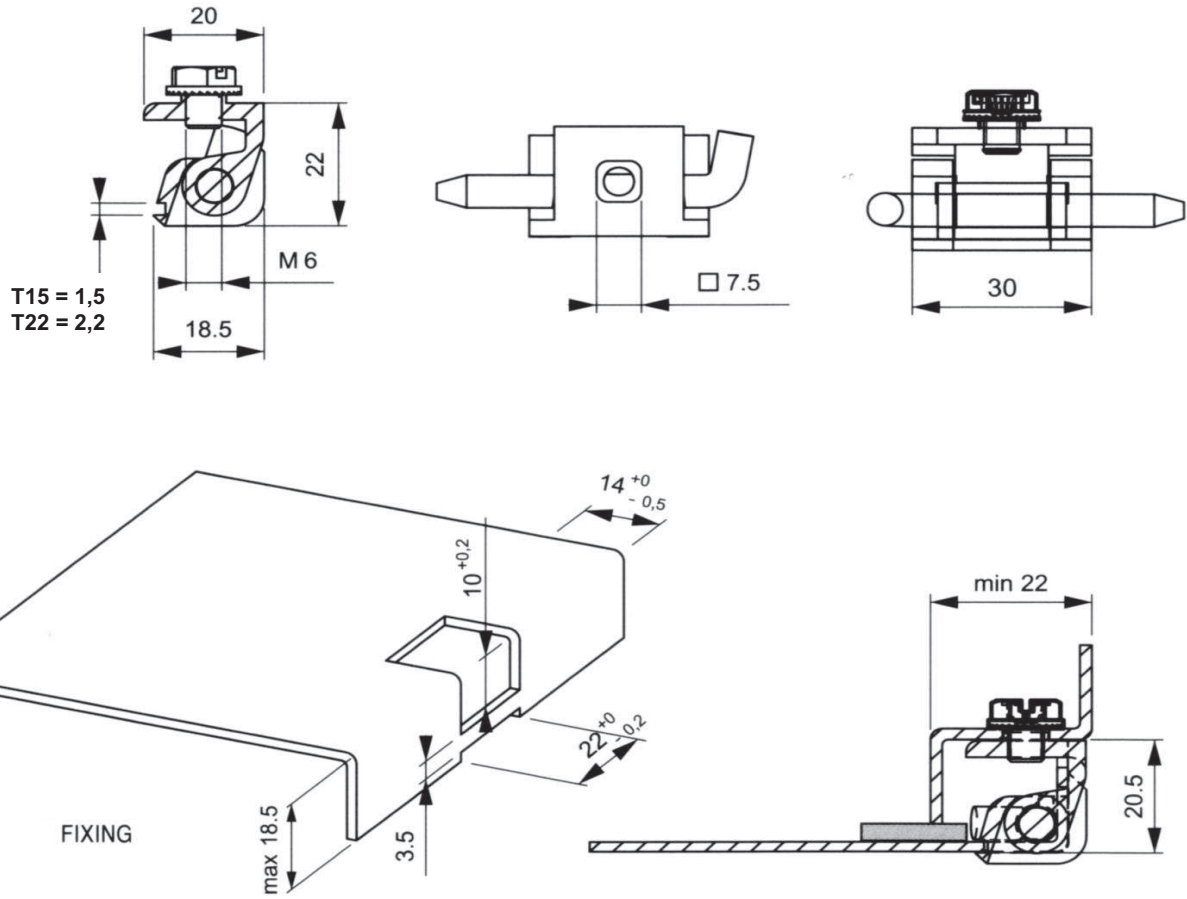
Small electric panels

Version	Materials / Finish	Part-No.
	Zamak® / chrome 1,0 mm - 1,2 mm panel thickness	HC20ED-*-T15
	Zamak® / black 1,0 mm - 1,2 mm panel thickness	HC20EH-*-T15
	Zamak® / chrome 1,5 mm - 2,0 mm panel thickness	HC20ED-*-T22
	Zamak® / black 1,5 mm - 2,0 mm panel thickness	HC20EH-*-T22

add version to article number

* Version	PIN	Materials / Finish
*A		Poliasetal (Delrin)
*B		steel / zinc plated
*C		steel / zinc plated

Dimensions and Hole Preparation

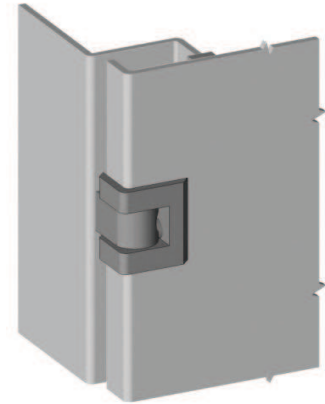
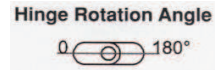


Particular Features:

Corner hinge

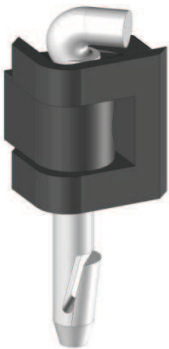
Suitable for steel panels with a thickness of 1,5 mm

Hinge pin available in three types

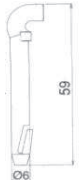

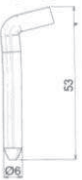


Application:

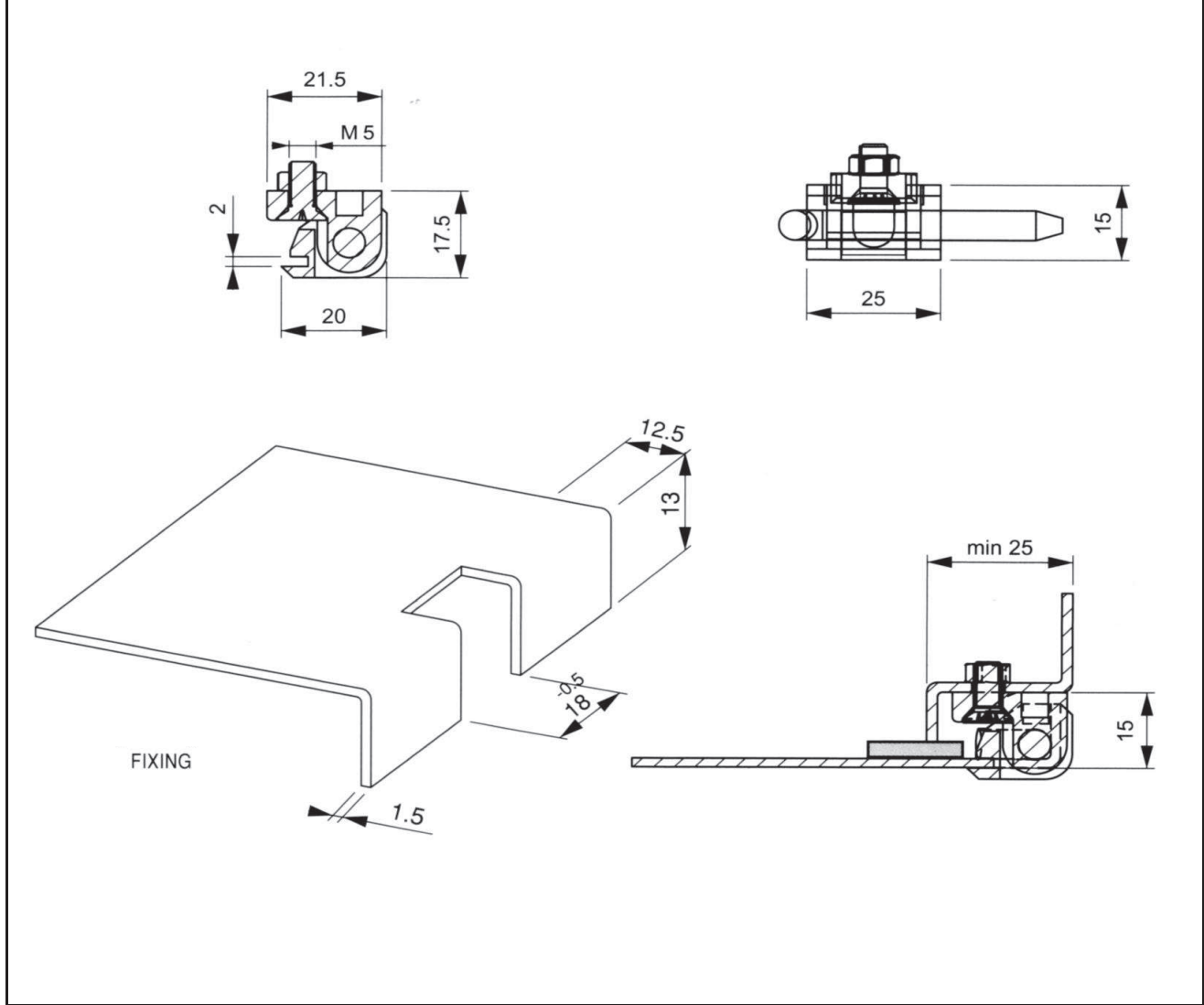
Small electric panels

Version	Materials / Finish	Part-No.
	body: Polyamide Black DIN-EN ISO 1043-1 PA6 GFR30	HC30K-*

add version to article number

* Version	PIN	Materials / Finish
*A		Poliasetal (Delrin)
*B		steel / zinc plated
*C		steel / zinc plated

Dimensions and Hole Preparation



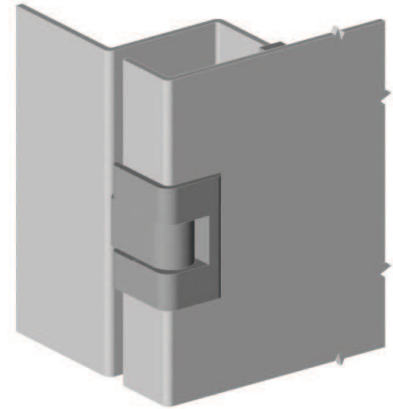
Particular Features:

Corner hinge

Suitable for steel panels with a thickness of 2 mm

Steel hinge pin

Hinge Rotation Angle

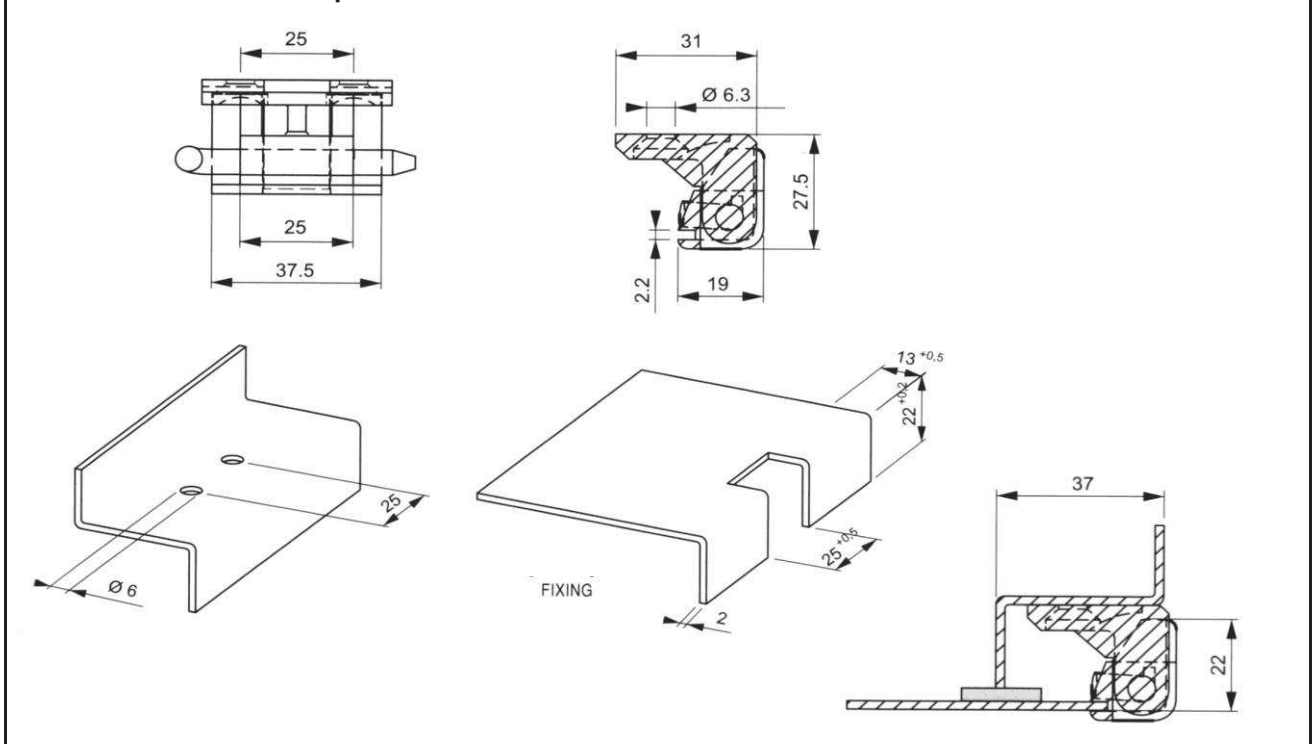


Application:

Big sized electric panels

Version	Materials / Finish	Part-No.
	Zamak® DIN-EN1774-ZnAl4Cu1 chrome plated (CrVI-free)	HC40ED-B
	Zamak® DIN-EN1774-ZnAl4Cu1 black coated (CrVI-free)	HC40EH-B

Dimensions and Hole Preparation



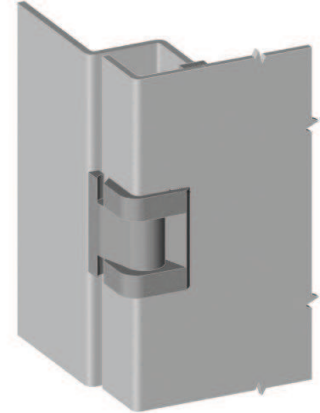
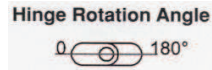
Particular Features:

Corner hinge

Suitable for steel panels with a thickness of 2,0 mm

Steel hinge pin

With M6 threaded studs for internal fastening

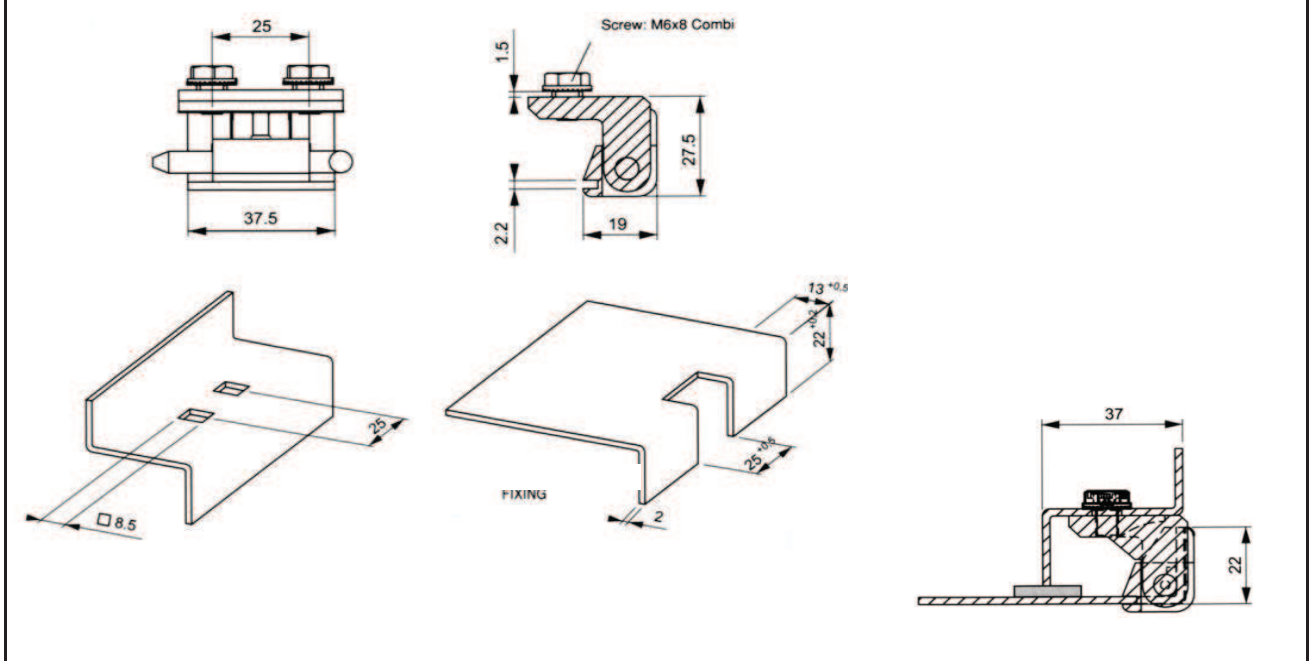


Application:

Big sized electric panels

Version	Materials / Finish	Part-No.
	Zamak® DIN-EN1774-ZnAl4Cu1 chrome plated (CrVI-free)	HC50ED-B
	Zamak® DIN-EN1774-ZnAl4Cu1 black coated (CrVI-free)	HC50EH-B

Dimensions and Hole Preparation



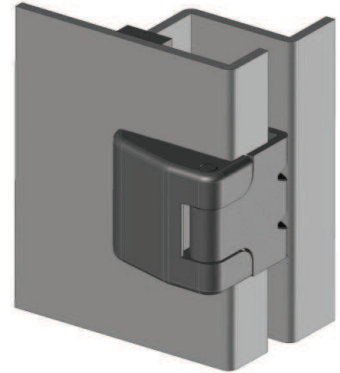
Particular Features:

Corner hinge for 16,5 mm bend

M5 version

Budget priced polyamid version available

Hinge Rotation Angle

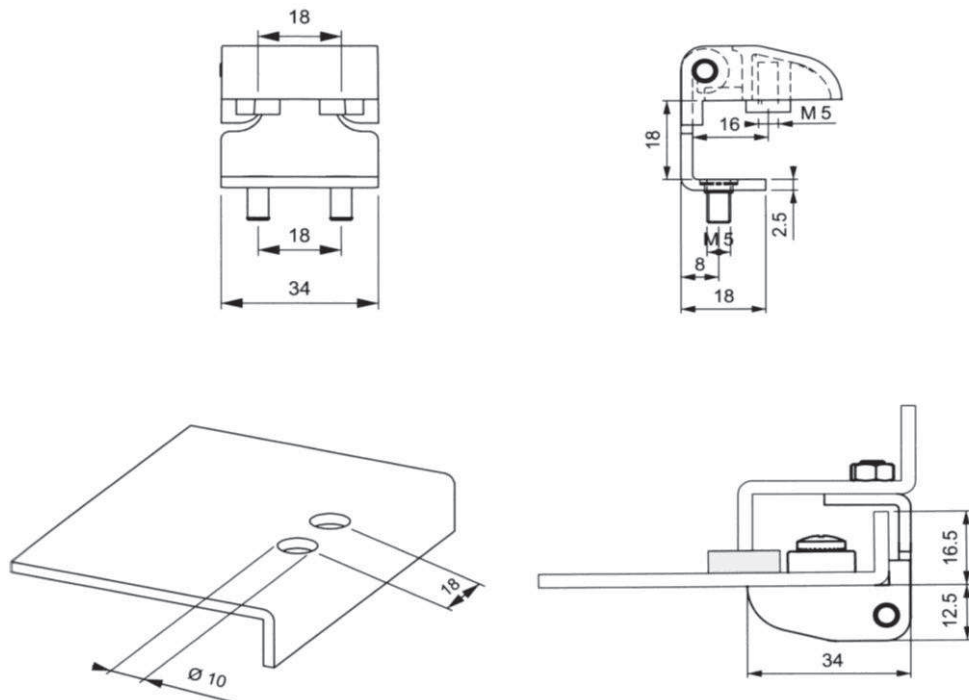


Application:

Electric panels, machinery covers

Version	Materials / Finish	Part-No.
	Zamak® DIN-EN1774-ZnAl4Cu1 black coated (CrVI-free)	HC60EH-T18-AA
	Polyamid / black PA6 GFR30	HC60K-T18-AA

Dimensions and Hole Preparation

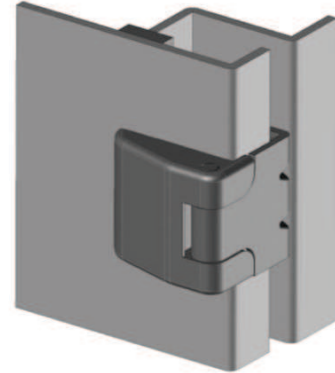
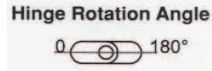




Particular Features:

Corner hinge for 21 mm bend
M6 version

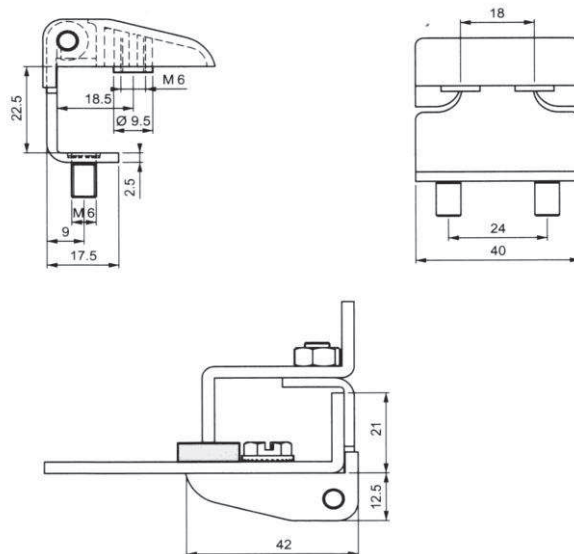
Application:

Electric panels, machinery covers



Version	Materials / Finish	Part-No.
	Zamak® DIN-EN1774-ZnAl4Cu1 black coated (CrVI-free)	HC70EH-T17-AA
	Zamak® DIN-EN1774-ZnAl4Cu1 black coated (CrVI-free)	HC70EH-T17-BB

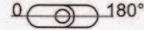
Dimensions and Hole Preparation



Particular Features:

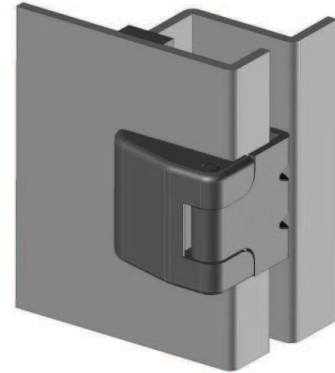
Corner hinge for 17 mm bend


Hinge Rotation Angle



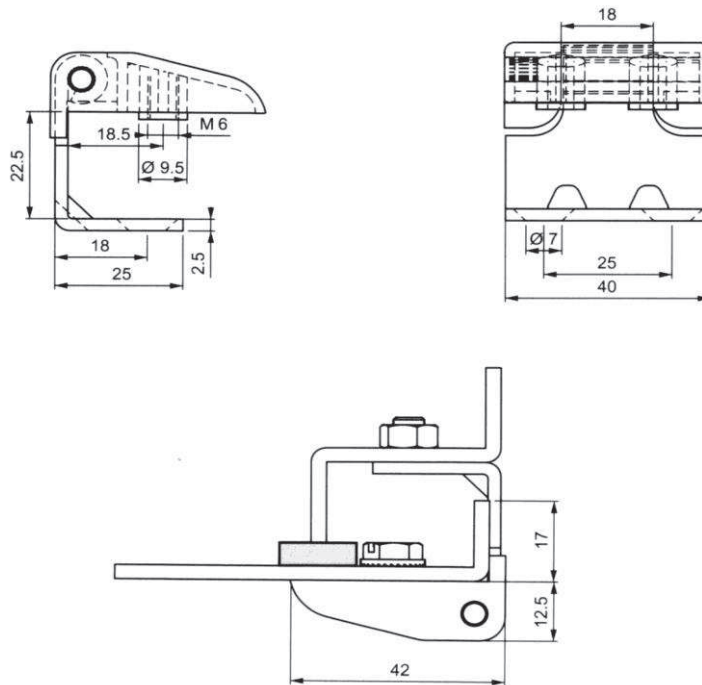
Application:

Electric panels, machinery covers



Version	Materials / Finish	Part-No.
	Zamak® DIN-EN1774-ZnAl4Cu1 black coated (CrVI-free)	HC70EH-T25-AA

Dimensions and Hole Preparation

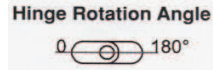
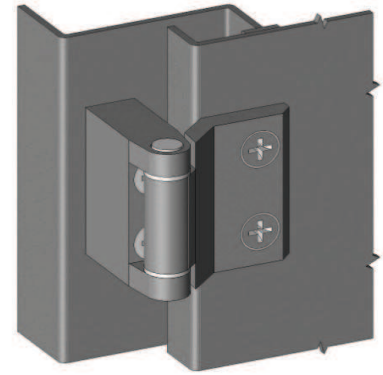


Particular Features:

For plain/flush or side mounted doors

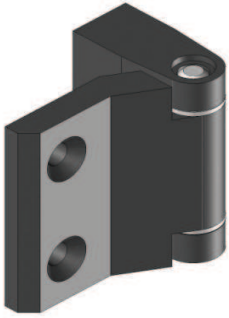
For side mounted doors with a bend of between 2 mm and 30 mm

Hardened steel hinge pin



Application:

Electric panels, machinery covers

Version	Materials / Finish	Part-No.
	Zamak® DIN-EN1774-ZnAl4Cu1 black coated (CrVI-free)	HC80EH-T*

* Version	h	* Version	h	* Version	h
02	2	T10	10	T25	25
03	3	T15	15	T27	27
05	5	T17	17	T30	30
07	7	T20	20		

Dimensions and Hole Preparation

