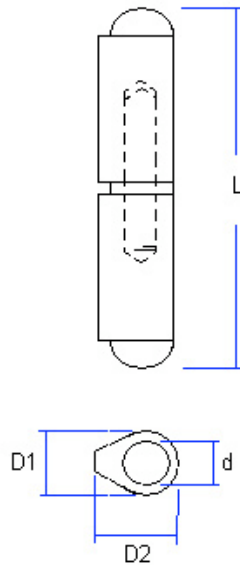


# WELD-ON BARREL HINGES



## Code no. 10

### WELD-ON BARREL HINGES

With round head, fixed pin made from solid profiles in various materials

#### Options

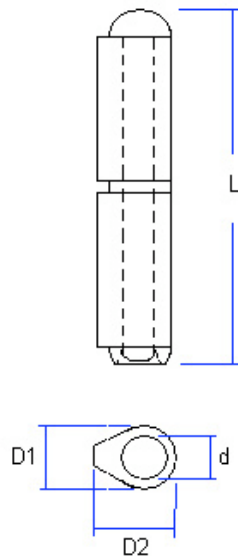
- Hinge Material steel, stainless steel (ST/ST)
- Pin & Washer Material steel, brass, stainless steel
- Grease Nipple with or without

Code	Length = L	Cross Section = D1 / D2	Pin dia = d	Hinge Material	Pin Material	Grease Nipple	Weight /100sets (kg)
10-060	60	10/12	6	Steel	Steel	No	3.6
10-060BP	60	10/12	6	Steel	Brass	No	3.6
10-060SP	60	10/12	6	Steel	ST/ST	No	3.6
10-060STST	60	10/12	6	ST/ST	ST/ST	No	3.6
10-070	70	10/12	6	Steel	Steel	No	4.6
10-070BP	70	10/12	6	Steel	Brass	No	4.6
10-070SP	70	10/12	6	Steel	ST/ST	No	4.6
10-080	80	13/16	8	Steel	Steel	No	8.3
10-080/GN	80	13/16	8	Steel	Steel	Yes	8.3
10-080BP	80	13/16	8	Steel	Brass	No	8.3
10-080SP	80	13/16	8	Steel	ST/ST	No	8.3
10-080STST	80	13/16	8	ST/ST	ST/ST	No	8.3
10-100	100	16/20	10	Steel	Steel	No	16.8
10-100/GN	100	16/20	10	Steel	Steel	Yes	16.8
10-100BP	100	16/20	10	Steel	Brass	No	16.8
10-100SP	100	16/20	10	Steel	ST/ST	No	16.8
10-100SP/GN	100	16/20	10	Steel	ST/ST	Yes	16.8
10-100STST	100	16/20	10	ST/ST	ST/ST	No	16.8
10-100STBP	100	16/20	10	ST/ST	Brass	No	16.8
10-120	120	16/20	10	Steel	Steel	No	20
10-120/GN	120	16/20	10	Steel	Steel	Yes	20
10-120BP	120	16/20	10	Steel	Brass	No	20
10-120SP	120	16/20	10	Steel	ST/ST	No	20
10-120SP/GN	120	16/20	10	Steel	ST/ST	Yes	20
10-120STST	120	16/20	10	ST/ST	ST/ST	No	20
10-135	135	18/22	12	Steel	Steel	No	29
10-135/GN	135	18/22	12	Steel	Steel	Yes	29
10-135BP	135	18/22	12	Steel	Brass	No	29
10-135BP/GN	135	18/22	12	Steel	Brass	Yes	29
10-135SP	135	18/22	12	Steel	ST/ST	No	29
10-135SP/GN	135	18/22	12	Steel	ST/ST	Yes	29
10-135STST	135	18/22	12	ST/ST	ST/ST	No	29

## WELD-ON BARREL HINGES

Code	Length = L	Cross Section = D/S	Pin dia = d	Hinge Material	Pin Material	Grease Nipple	Weight /100sets (kg)
<b>10-150</b>	150	20/25	13	Steel	Steel	No	39
10-150/GN	150	20/25	13	Steel	Steel	Yes	39
10-150BP	150	20/25	13	Steel	Brass	No	39
10-150BP/GN	150	20/25	13	Steel	Brass	Yes	39
10-150SP	150	20/25	13	Steel	ST/ST	No	39
10-150SP/GN	150	20/25	13	Steel	ST/ST	Yes	39
10-150STST	150	20/25	13	ST/ST	ST/ST	No	39
<b>10-180</b>	180	20/25	13	Steel	Steel	No	48
10-180/GN	180	20/25	13	Steel	Steel	Yes	48
10-180BP	180	20/25	13	Steel	Brass	No	48
10-180BP/GN	180	20/25	13	Steel	Brass	Yes	48
10-180SP	180	20/25	13	Steel	ST/ST	No	48
10-180SP/GN	180	20/25	13	Steel	ST/ST	Yes	48
10-180STST	180	20/25	13	ST/ST	ST/ST	No	48
<b>10-200</b>	200	23/29	16	Steel	Steel	No	71
10-200/GN	200	23/29	16	Steel	Steel	Yes	71
10-200BP	200	23/29	16	Steel	Brass	No	71
10-200BP/GN	200	23/29	16	Steel	Brass	Yes	71
10-200SP	200	23/29	16	Steel	ST/ST	No	71
10-200SP/GN	200	23/29	16	Steel	ST/ST	Yes	71

## WELD-ON BARREL HINGES



### Code no. 11

#### WELD-ON BARREL HINGES

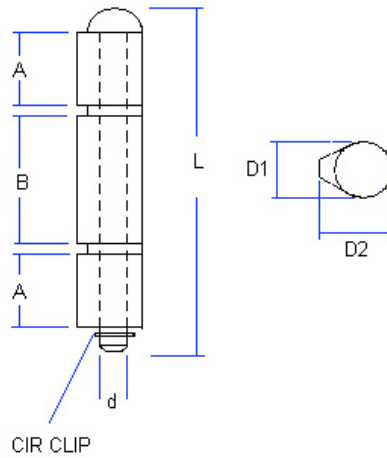
With round head, loose pin  
Made from solid profiles in various materials

##### Options

- Hinge Material steel
- Pin & Washer Material steel, brass
- Grease Nipple is optional

Code	Length = L	Cross Section = D1 / D2	Pin dia = d	Hinge Material	Pin Material	Weight /100sets (kg)
11-060	60	10/12	6	Steel	Steel	3.6
11-060BP	60	10/12	6	Steel	Brass	3.6
11-080	80	13/16	8	Steel	Steel	8.3
11-080BP	80	13/16	8	Steel	Brass	8.3
11-100	100	16/20	10	Steel	Steel	16.8
11-100BP	100	16/20	10	Steel	Brass	16.8
11-120	120	16/20	10	Steel	Steel	20
11-120BP	120	16/20	10	Steel	Brass	20
11-135	135	18/22	12	Steel	Steel	29
11-135BP	135	18/22	12	Steel	Brass	29
11-150	150	20/25	13	Steel	Steel	39
11-150BP	150	20/25	13	Steel	Brass	39
11-180	180	20/25	13	Steel	Steel	48
11-180BP	180	20/25	13	Steel	Brass	48
11-200	200	23/29	16	Steel	Steel	71
11-200BP	200	23/29	16	Steel	Brass	71

## WELD-ON BARREL HINGES



**Code no. 14-020**

**LOOSE PIN 3-PART HINGES**  
Loose pin 3 part hinge with brass washers and circlip, made from solid profiles

Options

- Hinge Material steel
- Pin Material steel or brass
- Grease Nipple with or without

Code	Length = L	Cross Section = D1/D2	Pin dia = d	Part A = A	Part B = B	Pin Material	Grease Nipple	Weight/100sets (kg)
14-020ASG	135	18/22.5	12	30	50	Steel	Yes	27
14-020ASN	135	18/22.5	12	30	50	Steel	No	27
14-020ABG	135	18/22.5	12	30	50	Brass	Yes	27
14-020ABN	135	18/22.5	12	30	50	Brass	No	27
14-020BSG	150	20/25.5	13	35	55	Steel	Yes	40
14-020BSN	150	20/25.5	13	35	55	Steel	No	40
14-020BBG	150	20/25.5	13	35	55	Brass	Yes	40
14-020BBN	150	20/25.5	13	35	55	Brass	No	40
14-020BST	150	20/25.5	13	35	55	Stainless	No	40

# WELD-ON BARREL HINGES

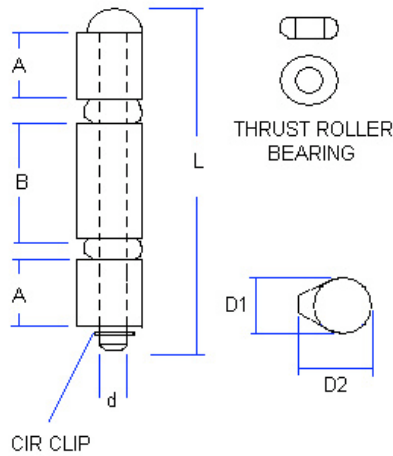
Code no. 14-030

## LOOSE PIN 3-PART HINGES

Loose pin 3 part hinge with thrust bearings and circlip, made from solid profiles

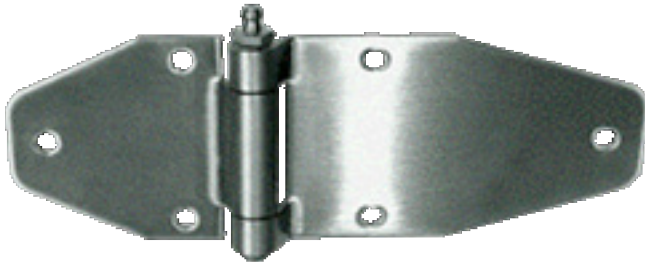
Options

- Hinge Material steel
- Pin Material steel or brass
- Grease Nipple with or without



Code	Length = L	Cross Section = D1/D2	Pin dia = d	Part A = A	Part B = B	Pin Material	Grease Nipple	Weight/100sets (kg)
14-030ASG	90	20/25.5	12	19.5	35	Steel	Yes	26
14-030ASN	90	20/25.5	12	19.5	35	Steel	No	26
14-030ABG	90	20/25.5	12	19.5	35	Brass	Yes	26
14-030ABN	90	20/25.5	12	19.5	35	Brass	No	26
14-030BSG	110	23/29	13	25	44	Steel	Yes	35
14-030BSN	110	23/29	13	25	44	Steel	No	35
14-030BBG	110	23/29	13	25	44	Brass	Yes	35
14-030BBN	110	23/29	13	25	44	Brass	No	35

# CONTAINER HINGES



40-000A  
40-000AS

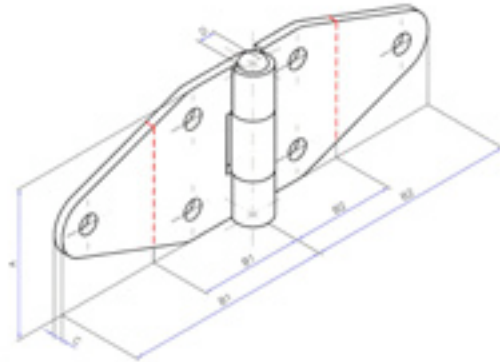
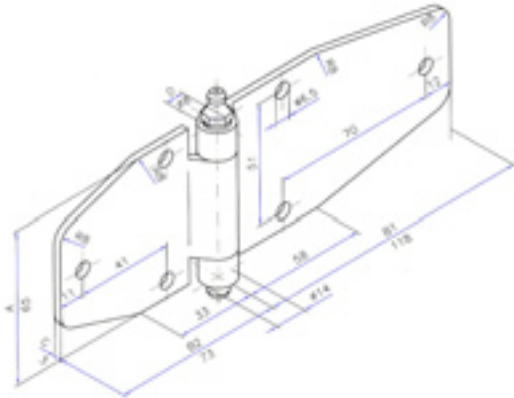
Code no. 40-000

## HEAVY DUTY ROLLED AND PRESSED HINGES

Options

1 Hinge Material steel, stainless Steel

1 Pin Material stainless steel



40-000B



40-000D



40-000E

Code	Length = A	Width = B1/B2	Material thickness = C	Pin dia = D1	Hinge Material	Hole No.	Hole dia	Pin Material
40-000A	65	118/73	3	8	Steel	6	6.5	Steel
40-000AS	65	118/73	3	8	ST/ST	6	6.5	ST/ST
40-000B	50	35/35	3	6	ST/ST	4	6.5	ST/ST
40-000C	50	70/35	3	6	ST/ST	5	6.5	ST/ST
40-000D	50	35/70	3	6	ST/ST	5	6.5	ST/ST
40-000E	50	70/70	3	6	ST/ST	6	6.5	ST/ST

## SOLID PROFILE BUTT HINGES

Code no. 37-000



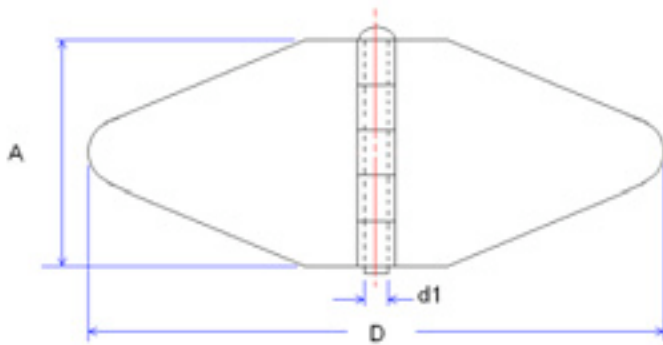
### HEAVY DUTY BUTT HINGES

2 part, solid steel profile hinge with loose steel or brass pin

Options

1 Hinge Material steel, Self colour

1 Pin Material steel, Brass



Code	Length = A	Width = D	Pin dia = d1	Thickness = C	Pin Material
37-000A	50	140	6	5	Steel
37-000AS	50	140	8	6	Steel
37-000B	50	140	6	5	Brass
37-000BS	50	140	8	6	Brass

# ROLLED BUTT HINGES

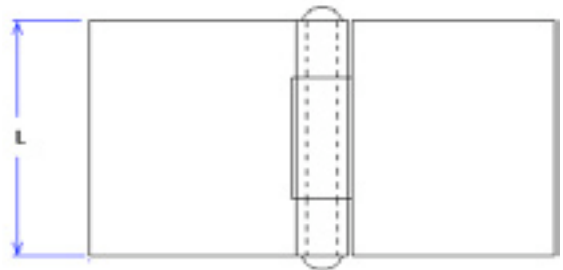
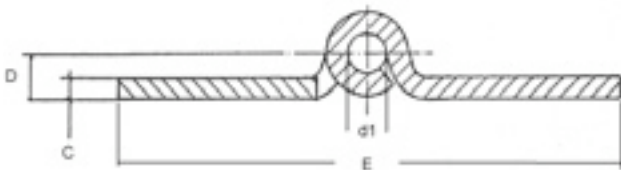
Code no. 36-000

## HEAVY DUTY ROLLED HINGES with knuckle edge concealed

Options

1 Hinge Material steel or stainless steel (ST/ST)

1 Pin Material steel or stainless steel



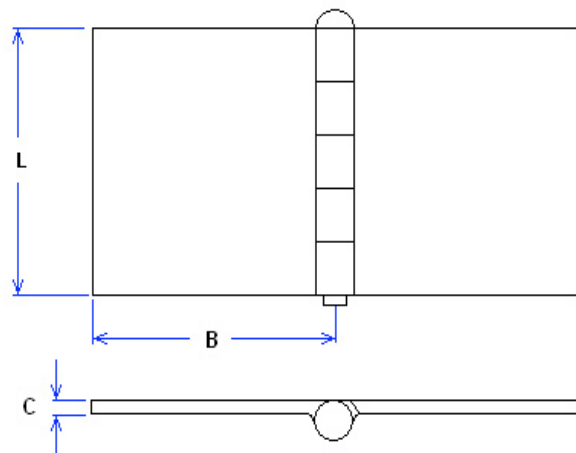
Code	Length = <b>A</b>	Thickness = <b>C</b>	Open width = <b>E</b>	Pin Position = <b>D</b>	Pin dia = <b>d1</b>	Hinge Material	Pin Material
36-000A	65	4	100	6.5	8	Steel	Steel
36-000AS	65	3	100	6.5	6	ST/ST	ST/ST




**Code no. 34-300**
**SOLID PROFILE BACK FLAP HINGES**

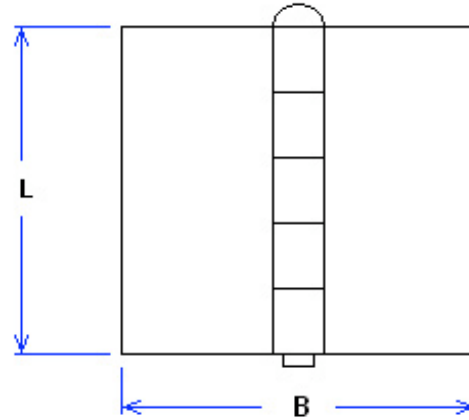
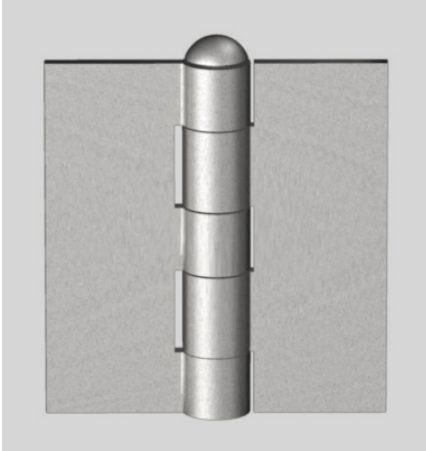
Heavy duty, in mild steel material

Round head pin



Code	Length = L	Width = B	Thickness = C	Pin dia = d	Knuckle
34-301	30	40	3	4	5
34-302	30	60	3	4	5
34-303	40	20	3	4	5
34-304	40	40	3	4	5
34-305	40	60	3	4	5
34-306	50	40	3	4	5
34-307	50	60	3	4	5
34-308	60	40	3	4	5
34-309	60	60	3	4	5
34-310	30	30	5	6	5
34-311	30	60	5	6	5
34-312	30	80	5	6	5
34-313	30	100	5	6	5
34-314	40	30	5	6	5
34-315	40	60	5	6	5
34-316	40	80	5	6	5
34-317	40	100	5	6	5
34-318	40	120	5	6	5
34-319	45	30	5	6	5
34-320	45	60	5	6	5
34-321	45	80	5	6	5
34-322	45	100	5	6	5
34-323	45	120	5	6	5
34-324	50	30	5	6	5
34-325	50	60	5	6	5
34-326	50	80	5	6	5
Code	Length = L	Width = B	Thickness = C	Pin dia = d	Knuckle
34-327	50	100	5	6	5
34-328	50	120	5	6	5

34-329	60	30	5	6	5
34-330	60	60	5	6	5
34-331	60	80	5	6	5
34-332	60	100	5	6	5
34-333	60	120	5	6	5
34-334	80	30	5	6	7
34-335	80	60	5	6	7
34-336	80	80	5	6	7
34-337	100	30	5	6	7
34-338	100	60	5	6	7
34-339	100	80	5	6	7
34-340	40	80	6	8	5
34-341	45	80	6	8	5
34-342	45	100	6	8	5
34-343	45	120	6	8	5
34-344	50	80	6	8	5
34-345	50	100	6	8	5
34-346	50	120	6	8	5
34-347	60	80	6	8	5
34-348	60	100	6	8	5
34-349	60	120	6	8	5
34-350	60	150	6	8	5
34-351	70	80	6	8	7
34-352	70	100	6	8	7
34-353	70	120	6	8	7
34-354	70	150	6	8	7
34-355	80	80	6	8	7
34-356	80	100	6	8	7
34-357	80	120	6	8	7
34-358	80	150	6	8	7
34-359	100	80	6	8	7
34-360	100	100	6	8	7
34-361	100	120	6	8	7
34-362	60	40	7	8	5
34-363	60	80	7	8	5
34-364	60	100	7	8	5
34-365	60	120	7	8	5
34-366	60	150	7	8	5
34-367	70	80	7	8	7
34-368	70	100	7	8	7
34-369	70	120	7	8	7
34-370	70	150	7	8	7
34-371	80	40	7	8	7
34-372	80	80	7	8	7
34-373	80	100	7	8	7
34-374	80	120	7	8	7
34-375	80	150	7	8	7
34-376	100	80	7	8	7
34-377	100	100	7	8	7
34-378	100	120	7	8	7
34-379	100	150	7	8	7
34-380	100	110	10	13	5

**Code no. 34-040**
**SOLID PROFILE BACK FLAP HINGES**  
 Heavy duty, in mild steel material


Code	Length = L	Width = B	Thickness = C	Pin dia = d	Knuckles
34-040A	60	27.5	3	6	5
34-040B	75	30	3	6.5	5
34-040C	90	32.5	3	7	5
34-040D	95	32.5	3	7	5
34-040E	100	37.5	3	8	5

**Code no. 34-010**

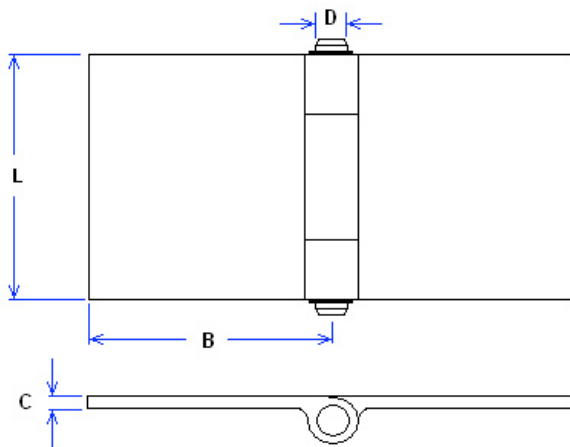
**SOLID PROFILE BACK FLAP HINGES**

Heavy duty hinge in mild steel

Loose pin fitted with Cir Clips

## Options

- Hinge Material                    steel
- Pin material                        steel, brass, stainless steel
- Grease Nipple                    with or without



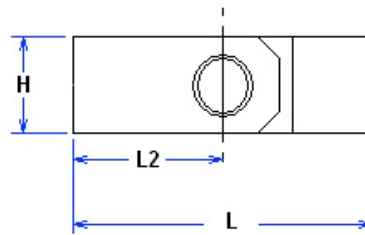
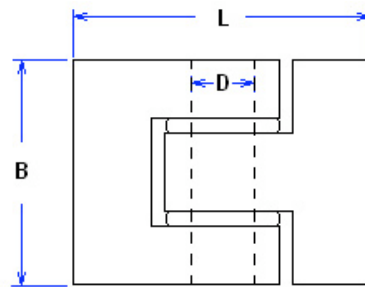
Code	Length = L	Width = B	Thickness = C	Pin Dia = D
34-010A	40	20	3	4
34-010B	40	40	3	4
34-010C	60	30	5	6
34-010D	60	60	5	6
34-010E	60	30	5	9
34-010F	60	60	5	9
34-010G	60	30	5	13
34-010H	60	60	5	13
34-010J	80	40	7	8
34-010K	80	80	7	8
34-010L	80	40	7	18
34-010M	80	80	7	18
34-010N	100	110	10	13


**Code no. 34-000**
**SOLID PROFILE BACK FLAP HINGES**

Heavy duty precision hinge in mild steel

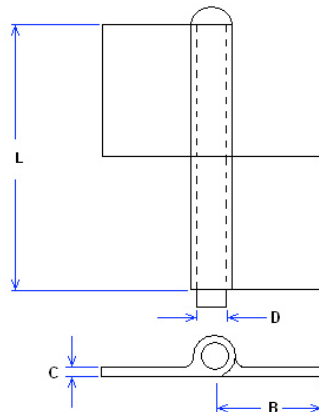
Fixed Steel pins fitted with self lubricating bearings

- Hinge Material            steel
- Angle of rotation        200°



Code	Length = L	Width = B	Thickness = H	= D
34-001	60	50	20	10
34-002	70	60	25	12
34-003	80	60	30	15
34-004	100	80	40	20
34-005	120	100	50	25
34-006	140	120	60	30

## SOLID PROFILE FLAG HINGES



**Code no. 32-000**

### SOLID PROFILE FLAG HINGES

Loose pin, 2 part solid profile hinges  
with brass washer  
Self colour, no holes  
Hinges are handed

#### Options

- Hinge Material            steel
- Pin Material             steel or brass
- Cir Clip                  optional
- Grease Nipple          optional

Code	Length = L	Width = B	Thickness = C	Pin dia = D	Pin Material
32-000A	080	35	6	10	Steel
32-000AB	080	35	6	10	Brass
32-000B	100	35	6	10	Steel
32-000BB	100	35	6	10	Brass

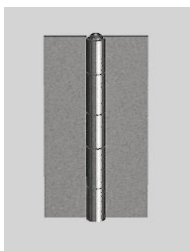
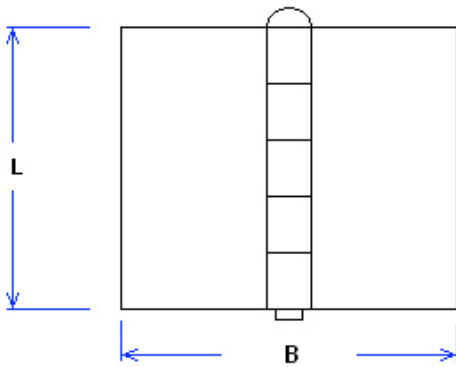
**Code no. 30**
**ROLLED BUTT HINGES**

With riveted pin

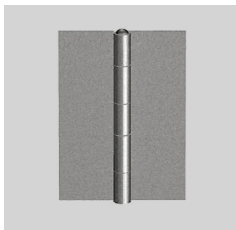
Self colour, no holes

## Options

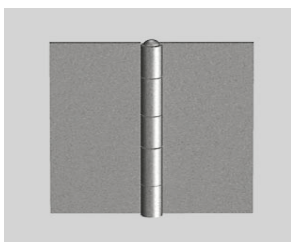
- Hinge Material Steel or Stainless steel


**NARROW HINGES**

Code	Length = L	Width = B	Thickness	Material
30-010A	40	26	0.9	Steel
30-010B	50	31	1.2	Steel
30-010C	60	34	1.4	Steel
30-010D	80	41	1.5	Steel
30-010E	100	52	1.6	Steel
30-010F	40	60	1.2	STST
30-010G	50	31	1.0	STST


**HALF WIDTH HINGES**

30-020A	60	46	1.4	steel
30-020B	80	58	1.5	steel
30-020C	60	46	1.2	STST


**SHARP EDGE HINGES**

30-030A	30	30	0.9	steel
30-030B	40	40	0.9	steel
30-030C	50	50	1.2	steel
30-030D	60	60	1.4	steel
30-030E	100	100	1.6	steel
30-030F	40	40	0.9	STST


**FULL WIDTH HINGES**

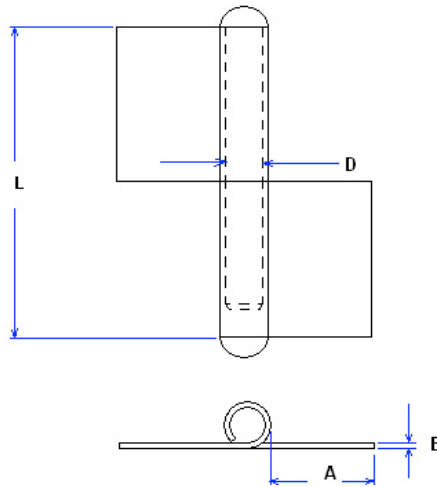
30-040A	30	45	0.9	steel
30-040B	40	60	1.2	steel
30-040C	50	75	1.2	steel
30-040D	60	90	1.4	steel
30-040E	60	90	1.2	STST

**Code no. 17-020**
**ROLLED FLAG HINGES**

Loose pin, 2 part rolled steel hinges  
with round end caps and brass wash  
Self colour, no holes  
Hinges are handed

**Options**

- Hinge Material \*Available in Stainless steel on request
- Pin Material steel or brass
- End Cap is optional

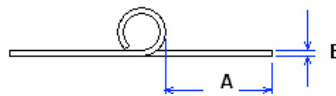
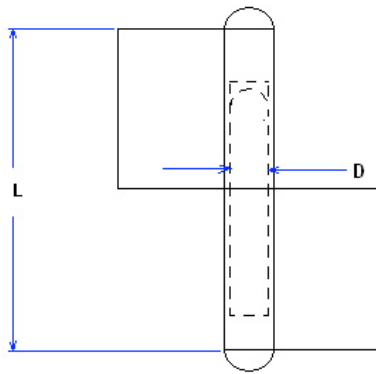

**LEFT HAND HINGE**

**RIGHT HAND HINGE**

Code	Length = L	Width = A	Thickness = B	Pin dia = D	Pin Material	Weight/100sets (kg)
17-020A	80 *	30	3	10	Steel	12
17-020AB	80 *	30	3	10	Brass	12
17-020B	100 *	30	3	10	Steel	22
17-020BB	100 *	30	3	10	Brass	22
17-020C	140	50	4	14	Steel	72
17-020CB	140	50	4	14	Brass	72
17-020D	160	50	4	14	Steel	84
17-020DB	160	50	4	14	Brass	84
17-020E	180	50	5	16	Steel	90
17-020EB	180	50	5	16	Brass	90
17-020F	200	50	5	16	Steel	100
17-020FB	200	50	5	16	Brass	100





LEFT HAND HINGE



RIGHT HAND HINGE

**Code no. 17-000**
**ROLLED FLAG HINGES**

Fixed pin, 2 part rolled steel hinges with round end caps and a brass washer

Self colour, no holes

Hinges are handed

## Options

- Hinge Material    steel, stainless steel (ST/ST)
- Pin Material        steel or brass

Code	Length = L	Width = A	Thickness = B	Pin dia = D	Pin Material	Weight/100sets (kg)
17-000A	80	30	3	10	Steel	12
17-000AB	80	30	3	10	Brass	12
17-000B	100	30	3	10	Steel	22
17-000BB	100	30	3	10	Brass	22

# COMPACT BARREL HINGES

**Code no. 55-000**

## WELD-ON BARREL HINGES

Compact hinge in mild steel  
with loose floating stainless steel pin



55-070A

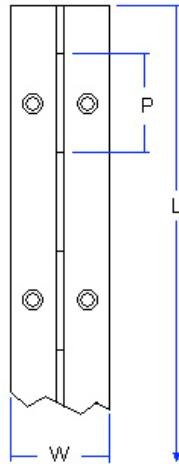


55-140B

Options

- Hinge parts                      2 or 3 parts
- Grease Nipple                    with or without

Code	Length = L	Cross Section = D/S	Pin dia = d	Grease Nipple	Weight /100sets (kg)
55-070A	70	20/25	13	No	20
55-070B	70	20/25	13	Yes	20
55-140A	140	20/25	13	No	30
55-140B	140	20/25	13	Yes	30


**Code no. 01-100**
**CONTINUOUS HINGES**  
 Drilled and countersunk, rolled

**Options**

- Hinge Material steel, aluminum, brass, stainless steel
- Pin Material steel, brass, stainless steel
- Finish various
- Pitch length can be 15mm or 30mm

Code	Length = L	Open Width = W	Thickness	Dia.	Code	Length = L	Open Width = W	Thickness	Dia.
01-10020A	3500	20	0.7	1.75	01-10060A	3500	60	1.25	2.5
01-10020B	3500	20	1.0	1.75	01-10060B	3500	60	1.5	3.0
01-10025A	3500	25	0.7	1.75	01-10060C	3500	60	2.0	3.75
01-10025B	3500	25	1.0	1.75	01-10060D	3500	60	1.25	6.0
01-10028A	3500	28	0.7	1.75	01-10060E	3500	60	2.0	6.0
01-10028B	3500	28	1.0	1.75	01-10060F	3500	60	3.0	6.0
01-10028C	3500	28	1.0	3.0	01-10060G	3500	60	3.0	10.0
01-10030A	3500	30.5	1.0	1.75	01-10070A	3500	70	1.5	3.0
01-10032A	3500	32	0.7	1.75	01-10070B	3500	70	2.0	6.0
01-10032B	3500	32	1.0	1.75	01-10070C	3500	70	3.0	6.0
01-10032C	3500	32	1.0	3.0	01-10070D	3500	70	3.0	10.0
01-10032D	3500	32	1.25	2.5	01-10080A	3500	80	1.5	3.0
01-10032E	3500	32	1.5	3.0	01-10080B	3500	80	2.0	6.0
01-10038A	3500	38	1.0	3.0	01-10080C	3500	80	3.0	6.0
01-10040A	3500	40	0.7	1.75	01-10080D	3500	80	3.0	10.0
01-10040B	3500	40	1.0	1.75	01-100C1A	3500	100	2.0	6.0
01-10040C	3500	40	1.25	2.5	01-100C1B	3500	100	3.0	6.0
01-10040D	3500	40	1.0	3.0	01-100C1C	3500	100	3.0	10.0
01-10040E	3500	40	1.5	3.0					
01-10040F	3500	40	2.0	3.75					
01-10040G	3500	40	1.25	6.0					
01-10040H	3500	40	2.0	6.0					
01-10040I	3500	40	3.0	6.0					
01-10045A	3500	45	1.25	2.5					
01-10045B	3500	45	1.5	3.0					
01-10045C	3500	45	2.0	3.75					
01-10045D	3500	45	1.25	6.0					
01-10045E	3500	45	2.0	6.0					
01-10050A	3500	50	0.7	1.75					
01-10050B	3500	50	1.0	1.75					
01-10050C	3500	50	1.25	2.5					
01-10050D	3500	50	1.0	3.0					
01-10050E	3500	50	1.5	3.0					
01-10050F	3500	50	2.0	3.75					
01-10050G	3500	50	1.25	6.0					
01-10050H	3500	50	2.0	6.0					
01-10050I	3500	50	3.0	6.0					

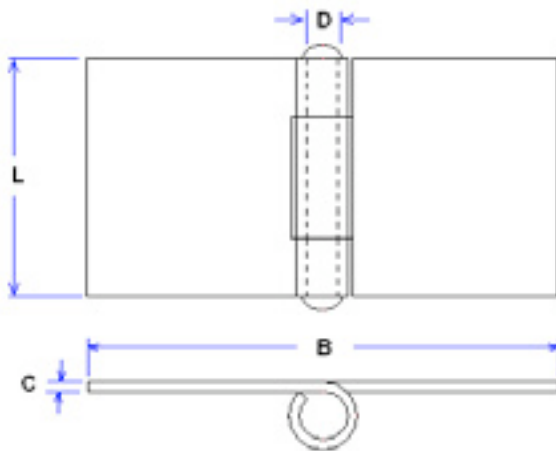
**Code no. 39-040**

**HEAVY DUTY ROLLED BUTT HINGES**  
 Riveted on both sides

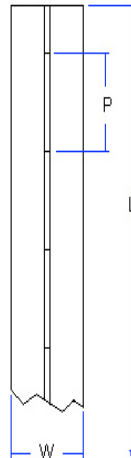
Options

1 Hinge Material    steel, stainless steel ( ST/ST)

1 Pin Material        steel, stainless steel



Code	Length = L	Width = B	Thickness = C	Pin dia = d	Material	Knuckles
39-040A	40	60	3	6	ST/ST	3
39-040B	40	80	3	6	ST/ST	3
39-040C	40	100	3	6	ST/ST	3
39-040D	40	120	3	6	ST/ST	3
39-040E	40	140	3	6	ST/ST	3
39-040F	60	60	3	6	ST/ST	3
39-040G	80	80	3	6	ST/ST	5
39-040H	100	100	3	6	ST/ST	5
39-050A	50	50	3	6	Steel	5
39-050B	50	100	3	6	Steel	5
39-050C	50	50	5	10	Steel	3
39-050D	50	100	5	10	Steel	3


**Code no. 01-101**
**CONTINUOUS HINGES**

Blank, rolled

**Options**

- Hinge Material    steel, aluminum, brass, stainless steel
- Pin Material       steel, brass, stainless steel
- Finish                various
- Pitch                  length can be 15mm or 30mm

Code	Length = L	Open Width = W	Thickness	Dia.	Code	Length = L	Open Width = W	Thickness	Dia.
01-10120A	3500	20	0.7	1.75	01-10150A	3500	50	0.7	1.75
01-10120B	3500	20	1.0	1.75	01-10150B	3500	50	1.0	1.75
01-10125A	3500	25	0.7	1.75	01-10150C	3500	50	1.25	2.5
01-10125B	3500	25	1.0	1.75	01-10150D	3500	50	1.0	3.0
01-10128A	3500	28	0.7	1.75	01-10150E	3500	50	1.5	3.0
01-10128B	3500	28	1.0	1.75	01-10150F	3500	50	2.0	3.75
01-10128C	3500	28	1.0	3.0	01-10150G	3500	50	1.25	6.0
01-10130A	3500	30.5	1.0	1.75	01-10150H	3500	50	2.0	6.0
01-10132A	3500	32	0.7	1.75	01-10150I	3500	50	3.0	6.0
01-10132B	3500	32	1.0	1.75	01-10160A	3500	60	1.25	2.5
01-10132C	3500	32	1.0	3.0	01-10160B	3500	60	1.5	3.0
01-10132D	3500	32	1.25	2.5	01-10160C	3500	60	2.0	3.75
01-10132E	3500	32	1.5	3.0	01-10160D	3500	60	1.25	6.0
01-10138A	3500	38	1.0	3.0	01-10160E	3500	60	2.0	6.0
01-10140A	3500	40	0.7	1.75	01-10160F	3500	60	3.0	6.0
01-10140B	3500	40	1.0	1.75	01-10170A	3500	70	1.5	3.0
01-10140C	3500	40	1.25	2.5	01-10170B	3500	70	2.0	6.0
01-10140D	3500	40	1.0	3.0	01-10170C	3500	70	3.0	6.0
01-10140E	3500	40	1.5	3.0	01-10180A	3500	80	1.5	3.0
01-10140F	3500	40	2.0	3.75	01-10180B	3500	80	2.0	6.0
01-10140G	3500	40	1.25	6.0	01-10180C	3500	80	3.0	6.0
01-10140H	3500	40	2.0	6.0	01-101C1A	3500	100	2.0	6.0
01-10140I	3500	40	3.0	6.0	01-101C1B	3500	100	3.0	6.0
01-10145A	3500	45	1.25	2.5					
01-10145B	3500	45	1.5	3.0					
01-10145C	3500	45	2.0	3.75					
01-10145D	3500	45	1.25	6.0					
01-10145E	3500	45	2.0	6.0					