

SympaTouch



SympaTouch



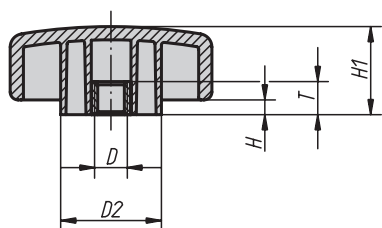
Flat Four Lobe Grips
Five Lobe Grips
High Clamping Grips
Turning Grips

Flat Four Lobe Grips

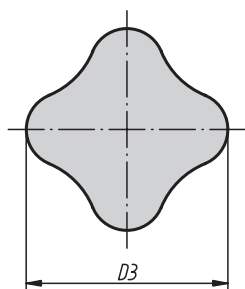
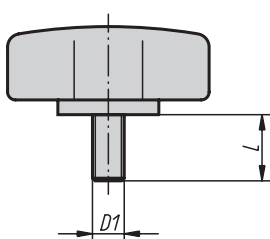


SYMPA TOUCH®

Form K
internal thread



Form L
external thread



Extraordinary gripping safety combined with attractive design are key elements to outstanding functionality. Due to their flat construction, the Flat Four Lobe Grips are suitable for low working spaces.

Material, surface finish:

Base body in black hard thermoplastic,
coating in black soft thermoplastic,
internal thread in brass,
external thread in galvanized steel quality class 5.8

Note:

SYMPA TOUCH Flat Four Lobe Grips are available in 5 sizes with internal and external threads.

On request:

Other external threads, screw lengths, versions and colours.

Sample order:

KIPP 06855-3506X20 (please also indicate dimension L)

KIPP Flat Four Lobe Grips with internal thread

Order No.	Form	D	D2	D3	H	H1	T
06855-3505	K	M5	14,2	35,5	2,8	15,5	12,5
06855-3506	K	M6	14,2	35,5	2,8	15,5	12,5
06855-4405	K	M5	17,5	44,5	3,3	19,3	12,5
06855-4406	K	M6	17,5	44,5	3,3	19,3	12,5
06855-4408	K	M8	17,5	44,5	3,3	19,3	12,5
06855-4410	K	M10	17,5	44,5	3,3	19,3	12,5
06855-5005	K	M5	23,6	50,8	3,8	22,1	12,5
06855-5006	K	M6	23,6	50,8	3,8	22,1	12,5
06855-5008	K	M8	23,6	50,8	3,8	22,1	12,5
06855-5010	K	M10	23,6	50,8	3,8	22,1	12,5
06855-6306	K	M6	31,7	63,5	4,6	27,7	12,5
06855-6308	K	M8	31,7	63,5	4,6	27,7	12,5
06855-6310	K	M10	31,7	63,5	4,6	27,7	12,5
06855-6312	K	M12	31,7	63,5	4,6	27,7	12,5
06855-7606	K	M6	38,1	76,2	5,6	33,3	12,5
06855-7608	K	M8	38,1	76,2	5,6	33,3	12,5
06855-7610	K	M10	38,1	76,2	5,6	33,3	12,5
06855-7612	K	M12	38,1	76,2	5,6	33,3	12,5

KIPP Flat Four Lobe Grips with external thread

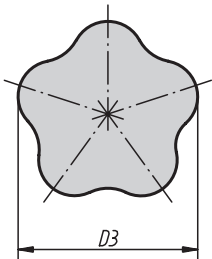
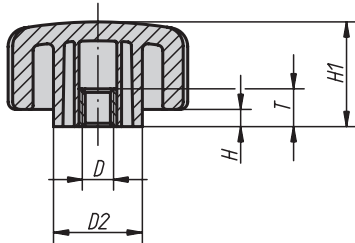
Order No.	Form	D1	D2	D3	H	H1	L = screw length
06855-3506X	L	M6	14,2	35,5	2,8	15,5	15 / 20 / 25 / 35
06855-4406X	L	M6	17,5	44,5	3,3	19,3	15 / 20 / 25 / 35
06855-4408X	L	M8	17,5	44,5	3,3	19,3	16 / 20 / 25 / 30 / 35
06855-4410X	L	M10	17,5	44,5	3,3	19,3	20 / 25 / 30 / 40 / 50
06855-5006X	L	M6	23,6	50,8	3,8	22,1	15 / 20 / 25 / 35
06855-5008X	L	M8	23,6	50,8	3,8	22,1	16 / 20 / 25 / 30 / 35
06855-5010X	L	M10	23,6	50,8	3,8	22,1	20 / 25 / 30 / 40 / 50
06855-6306X	L	M6	31,7	63,5	4,6	27,7	15 / 20 / 25 / 35
06855-6308X	L	M8	31,7	63,5	4,6	27,7	16 / 20 / 25 / 30 / 35
06855-6310X	L	M10	31,7	63,5	4,6	27,7	20 / 25 / 30 / 40 / 50
06855-7606X	L	M6	38,1	76,2	5,6	33,3	15 / 20 / 25 / 35
06855-7608X	L	M8	38,1	76,2	5,6	33,3	16 / 20 / 25 / 30 / 35
06855-7610X	L	M10	38,1	76,2	5,6	33,3	20 / 25 / 30 / 40 / 50

Five Lobe Grips

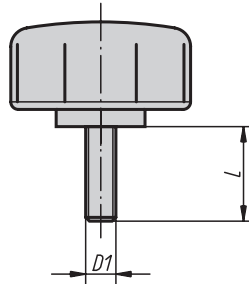


SYMPA TOUCH®

Form K
internal thread



Form L
external thread



Natural and secure gripping make the Five Lobe Grip unique thanks to its material and shape.

Material, surface finish:

Base body in black hard thermoplastic,
coating in black soft thermoplastic,
internal thread in brass,
external thread in galvanized steel quality class 5.8

Note:

SYMPA TOUCH Five Lobe Grips are available in 3 sizes with internal and external threads.

On request:

Other external threads, screw lengths, versions and colours.

Sample order:

KIPP 06857-4006X20 (please also indicate dimensio L)

KIPP Five Lobe Grips with internal thread

Order No.	Form	D	D2	D3	H	H1	T
06857-4005	K	M5	19	40	4,6	27,7	12,5
06857-4006	K	M6	19	40	4,6	27,7	12,5
06857-4008	K	M8	19	40	4,6	27,7	12,5
06857-4010	K	M10	19	40	4,6	27,7	12,5
06857-5005	K	M5	23,5	50	4,6	27,7	12,5
06857-5006	K	M6	23,5	50	4,6	27,7	12,5
06857-5008	K	M8	23,5	50	4,6	27,7	12,5
06857-5010	K	M10	23,5	50	4,6	27,7	12,5
06857-6006	K	M6	31,8	60	4,6	27,7	12,5
06857-6008	K	M8	31,8	60	4,6	27,7	12,5
06857-6010	K	M10	31,8	60	4,6	27,7	12,5

KIPP Five Lobe Grips with external thread

Order No.	Form	D1	D2	D3	H	H1	L = screw length
06857-4006X	L	M6	19	40	4,6	27,7	15 / 20 / 25 / 35
06857-4008X	L	M8	19	40	4,6	27,7	16 / 20 / 25 / 30 / 35
06857-4010X	L	M10	19	40	4,6	27,7	20 / 25 / 30 / 40 / 50
06857-5006X	L	M6	23,5	50	4,6	27,7	15 / 20 / 25 / 35
06857-5008X	L	M8	23,5	50	4,6	27,7	16 / 20 / 25 / 30 / 35
06857-5010X	L	M10	23,5	50	4,6	27,7	20 / 25 / 30 / 40 / 50
06857-6006X	L	M6	31,8	60	4,6	27,7	15 / 20 / 25 / 35
06857-6008X	L	M8	31,8	60	4,6	27,7	16 / 20 / 25 / 30 / 35
06857-6010X	L	M10	31,8	60	4,6	27,7	20 / 25 / 30 / 40 / 50

High Clamping Grips



SYMPA TOUCH®

The High Clamping Grips are distinguished by their unusual design. The high form permits high clamping forces while being easy on the hands.

Material, surface finish:

Base body in black hard thermoplastic,
coating in black soft thermoplastic,
internal thread in brass,
external thread in galvanized steel quality class 5.8

Note:

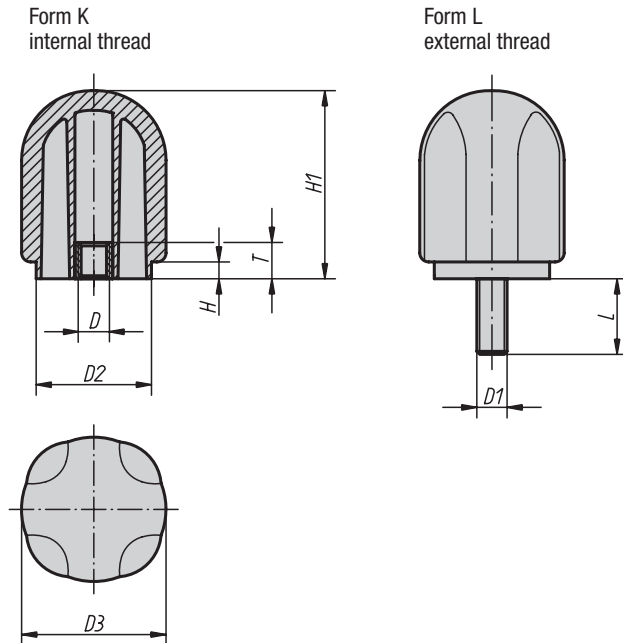
SYMPA TOUCH High Clamping Grips are available in 3 sizes with internal and external threads.

On request:

Other external threads, screw lengths, versions and colours.

Sample order:

KIPP 06859-4206X20 (please also indicate dimension L)



KIPP High Clamping Grips with internal thread

Order No.	Form	D	D2	D3	H	H1	T
06859-4206	K	M6	34	42,7	4,8	55,6	12,5
06859-4208	K	M8	34	42,7	4,8	55,6	12,5
06859-4210	K	M10	34	42,7	4,8	55,6	12,5
06859-4212	K	M12	34	42,7	4,8	55,6	12,5
06859-4706	K	M6	38,1	47,8	5,6	62,2	12,5
06859-4708	K	M8	38,1	47,8	5,6	62,2	12,5
06859-4710	K	M10	38,1	47,8	5,6	62,2	12,5
06859-4712	K	M12	38,1	47,8	5,6	62,2	12,5

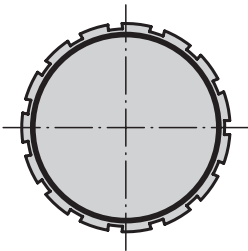
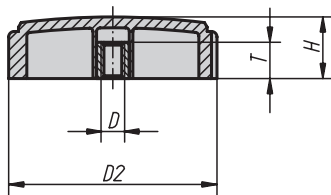
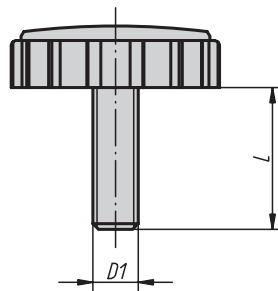
KIPP High Clamping Grips with external thread

Order No.	Form	D1	D2	D3	H	H1	L = screw length
06859-4206X	L	M6	34	42,7	4,8	55,6	15 / 20 / 25 / 35
06859-4208X	L	M8	34	42,7	4,8	55,6	16 / 20 / 25 / 30 / 35
06859-4210X	L	M10	34	42,7	4,8	55,6	20 / 25 / 30 / 40 / 50
06859-4706X	L	M6	38,1	47,8	5,6	62,2	15 / 20 / 25 / 35
06859-4708X	L	M8	38,1	47,8	5,6	62,2	16 / 20 / 25 / 30 / 35
06859-4710X	L	M10	38,1	47,8	5,6	62,2	20 / 25 / 30 / 40 / 50

Turning Grips



SYMPA TOUCH®

Form K
internal threadForm L
external thread

By nature of their extremely small height, these grips can also be used in very narrow clamping spaces. The slots on the edge improve gripping ability.

Material, surface finish:

Base body in black hard thermoplastic,
coating in black soft thermoplastic,
internal thread in brass,
external thread in galvanized steel quality class 5.8

Note:

SYMPA TOUCH Turning Grips are available in one size with internal and external threads.

On request:

Other external threads, screw lengths, versions and colours.

Sample order:

KIPP 06861-5706X20 (please also indicate dimension L)

KIPP Turning Grips with internal thread

Order No.	Form	D	D2	H	T
06861-5705	K	M5	57,4	17	12,5
06861-5706	K	M6	57,4	17	12,5
06861-5708	K	M8	57,4	17	12,5
06861-5710	K	M10	57,4	17	12,5

KIPP Turning Grips with external thread

Order No.	Form	D1	D2	H	L = screw length
06861-5706X	L	M6	57,4	17	15 / 20 / 25 / 35
06861-5708X	L	M8	57,4	17	16 / 20 / 25 / 30 / 35
06861-5710X	L	M10	57,4	17	20 / 25 / 30 / 40 / 50