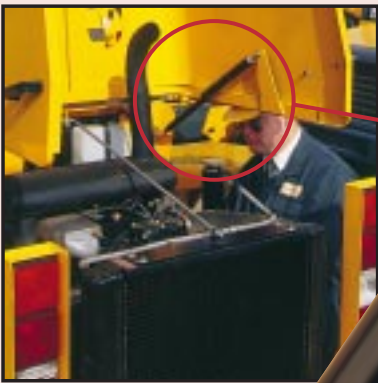


## ECONOLOC



Econoloc Gas Springs eliminate the need for separate safety rods in critical lift-assist applications. They positively lock when fully extended, protecting the operator from potential injury in the unlikely event of Gas Spring failure through overload or misuse.

Simple to use, they operate automatically, when the Gas Spring is fully extended a spring loaded locking shroud moves into place, preventing the Gas Spring from compressing. The Econoloc is manually released by applying thumb pressure to the designated area of the locking shroud, allowing the Gas Spring to compress in a controlled manner.

The locking shroud is finished with the same epoxy coating as the Gas Spring body, providing excellent corrosion resistance and an attractive appearance. A guide inside the shroud prevents scratching of the Gas Spring cylinder.

Econoloc Gas Springs combine superior ArvinMeritor quality with the added safety feature required in many heavy duty applications, such as trucks, construction machinery, switch gear and agricultural equipment. A single Econoloc Gas spring can be used in conjunction with a standard ArvinMeritor Swift & Sure Gas Spring.

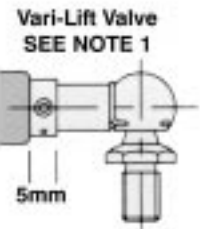
### Benefits

- **Eliminates the need for separate safety rods in critical lift-assist operations.**
- **Safe & easy to use**
- **Self-contained unit**
- **Maintenance free**
- **Operates Automatically**
- **BS EN ISO 9001 Registered Company**

An extensive range of sizes and forces

Econoloc Size Range	Range of Stroke Lengths (in 5mm increments)	Range of Tube Lengths (in 1mm increments)	Force Range (in 10 Newton increments)	Thread Type (M)†
EC(note 3)8 (8mm dia. rod, 18mm tube)	40-300	85-345	100-650 (22-146lbs)	M6 x 1.0
ECF1/ECV1 (note 1) (10mm dia. rod, 23mm tube)	40-400	85-445	150-1200 (34-269lbs)	M8 x 1.25
ECF4/ECV4 (note 1) (14mm dia. rod, 28mm tube)	40-500	95-555	200-2500 (45-562lbs)	M10 x 1.5

With any combination of end fittings



Nylon Ball Joint



Nylon Eye



Flat Steel Eye



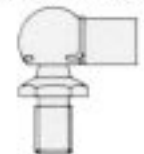
Nylon Ball Cup



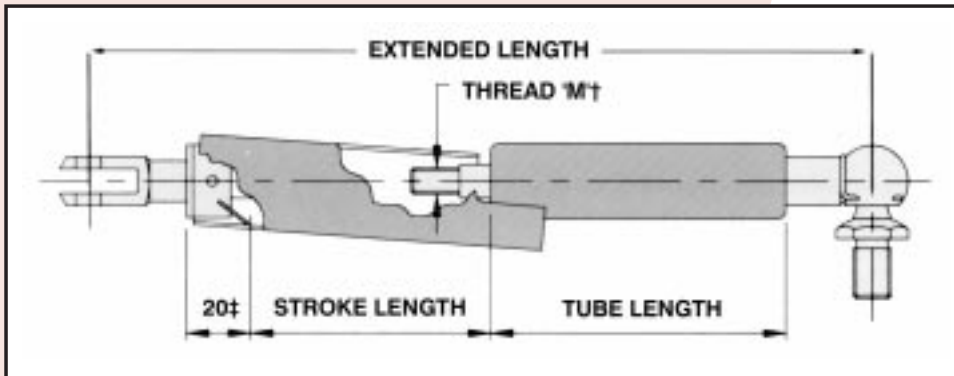
Clevis Fork



Steel Ball Joint



Zinc Eye



Specifically engineered for your application

† See our End Fittings leaflet for the comprehensive range available. If you have any questions about specifying gas springs, please call our Sales Office on 0116 274 3622/3623

**Note 1**

For Vari-Lift:

Add 5mm for the valve when calculating extended length. Force is set to maximum as standard but can be pre-set lower as required. Part numbering example: Replace F with V (e.g. ECV1, ECV4). For EC (8-18), see Note 3 (Y or Z).

**Note 2**

EC(note3)8 Add 45mm to stroke length to obtain minimum tube length

EC1(note3)1 Add 45mm to stroke length to obtain minimum tube length

EC\*4 Add 55mm to stroke length to obtain minimum tube length

\*For fixed force = F For Vari-Lift = V

‡ On all Econoloc gas springs, allow a further 20mm when calculating extended length

**Note 3 (8-18 size only - part number example)**

ECA8 or 1 = Fixed, High Force

ECB8 or 1 = Fixed, Low Force

ECY8 or 1 = Vari-Lift, High Force

ECZ8 or 1 = Vari-Lift, Low Force

High Force = above 300N (8-18) or above 400N (10-23)

Low Force = 300N and below (8-18) or 400N and below (10-23)