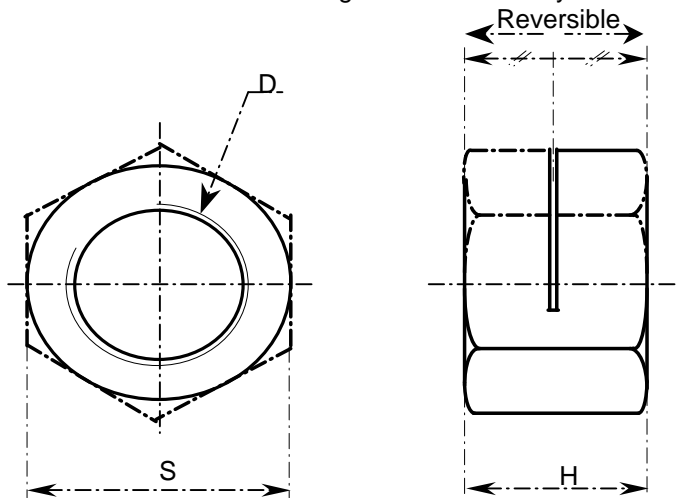


SINGLE SLOTTED LOCKING NUTS

ESN H100

EDITION JUNE 2002

PRINCIPLE : Selflocking effect obtained by axial deformation of the upper part of the thread



D	pitch	S	H	Designation SNEP
M4	0,70	7	4	ESN H100 M4X070 **
M5	0,80	8	5	ESN H100 M5X080 **
M6	1,00	10	6	ESN H100 M6X100 **
M8	1,25	13	8	ESN H100 M8X125 **
M10	1,50	16	10	ESN H100 M10X150 **
M12	1,75	18	12	ESN H100 M12X175 **
M14	2,00	21	14	ESN H100 M14X200 **
M16	2,00	24	16	ESN H100 M16X200 **
M18	2,50	27	18	ESN H100 M18X250 **
M20	2,50	30	20	ESN H100 M20X250 **
M22	2,50	34	22	ESN H100 M22X250 **
M24	3,00	36	24	ESN H100 M24X300 **
M27	3,00	41	27	ESN H100 M27X300 **

Material codes	
Steel R60	R60
Steel R80	R80
Stainless steel A2	A2
Stainless steel A4	A4
UZ40MNA (brass)	BL3
AU4Pb (Aluminium)	DM

Nut type _____ Material code _____
 \varnothing nominal + pitch _____

DIMENSIONS : According NFE 25 411

THREAD Profil ISO - according to ISO 965-2 Quality 6H

MECHANICAL CHARACTERISTICS : According to NF EN ISO 2320 NFE 25035
 Control on "ERICHSEN" test bench

STANDARD PROTECTIONS

Stainless steel : Anti seizing protection "SITAL BHT"

Nuts R60 : White zinc plated

Nuts R80 : Yellow zinc plated

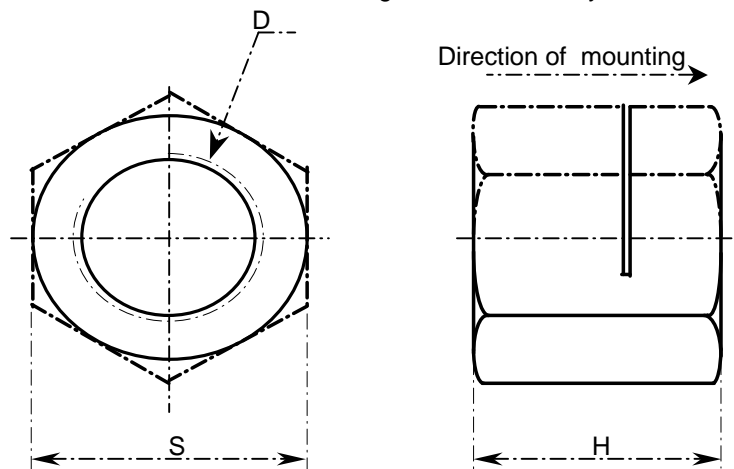
Please consult us for: other materials - other protections - specials.

SINGLE SLOTTED LOCKING NUTS

ESN H130

EDITION JUNE 2002

PRINCIPLE : Selflocking effect obtained by axial deformation of the upper part of the thread



D	pitch	S	H	Designation SNEP
M4	0,70	7	5,2	ESN H130 M4X070 **
M5	0,80	8	6,5	ESN H130 M5X080 **
M6	1,00	10	7,8	ESN H130 M6X100 **
M8	1,25	13	10,4	ESN H130 M8X125 **
M10	1,50	16	13	ESN H130 M10X150 **
M12	1,75	18	15,6	ESN H130 M12X175 **
M14	2,00	21	18,2	ESN H130 M14X200 **
M16	2,00	24	20,8	ESN H130 M16X200 **
M18	2,50	27	23,4	ESN H130 M18X250 **
M20	2,50	30	26	ESN H130 M20X250 **
M22	2,50	34	28,6	ESN H130 M22X250 **
M24	3,00	36	31,2	ESN H130 M24X300 **
M27	3,00	41	35,1	ESN H130 M27X300 **

Material codes	
Steel R60	R60
Steel R80	R80
Stainless steel A2	A2
Stainless steel A4	A4
UZ40MNA (brass)	BL3
AU4Pb (Aluminium)	DM

**Certified "SNCF"
CF 00-040 FP n° 5**

Nut type _____
 \varnothing nominal + pitch _____

Material code _____

DIMENSIONS : According to NFE 25 411

THREAD Profil ISO - according to ISO 965-2 Quality 6H

MECHANICAL CHARACTERISTICS : According to NF EN ISO 2320 NFE 25035
 Control on "ERICHSEN" test bench

STANDARD PROTECTIONS **Stainless steel : Anti seizing protection "SITAL BHT"**
 Nuts R60 : White zinc plated
 Nuts R80 : Yellow zinc plated

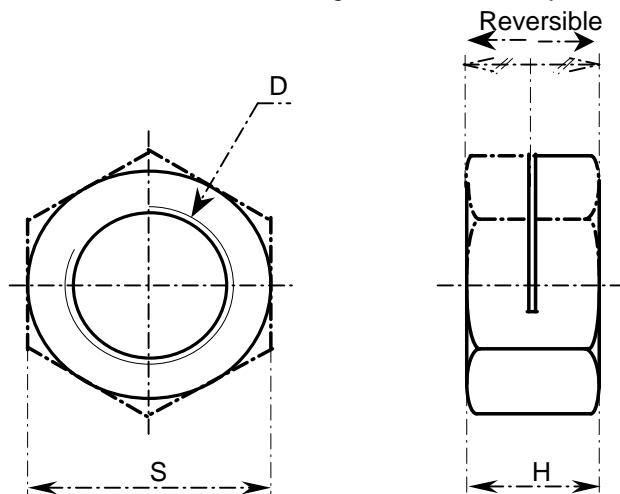
Please consult us for: other materials - other protections - specials.

SINGLE SLOTTED LOCKING NUTS

ESN H80

EDITION JUNE 2002

PRINCIPLE : Selflocking effect obtained by axial deformation of the upper part of the thread



D	pitch	S	H	Designation SNEP
M6	1,00	10	4,8	ESN H80 M6X100 **
M8	1,25	13	6,4	ESN H80 M8X125 **
M10	1,50	16	8	ESN H80 M10X150 **
M12	1,75	18	9,6	ESN H80 M12X175 **

Material codes	
Steel R60	R60
Steel R80	R80
Stainless steel A2	A2
Stainless steel A4	A4

Nut type

∅ nominal + pitch

Material code

DIMENSIONS : According to NFE 27 024 fine quality.

THREAD: Profile ISO - According ISO 965-2 Quality 6H

MECHANICAL CHARACTERISTICS : Control on "ERICHSEN" test bench
locking torque according to NF EN ISO 2320

STANDARD PROTECTION

Stainless steel: Anti seizing protection "SITAL BHT"

Nuts R60 : White zinc plated

Nuts R80 : Yellow zinc plated

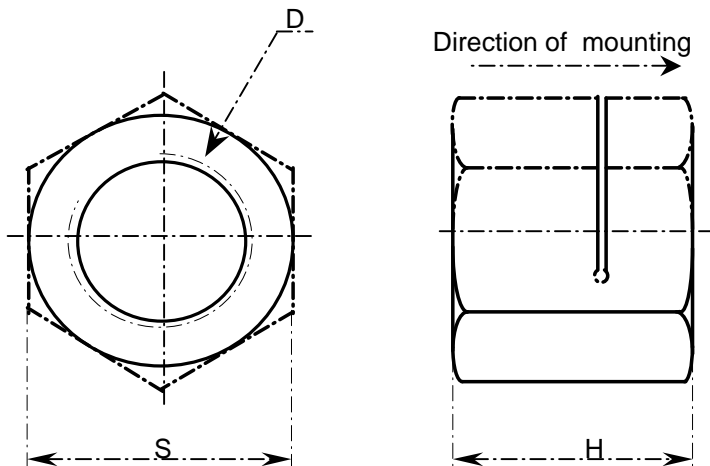
Please consult us for: other materials - other protections - specials.

SINGLE SLOTTED LOCKING NUTS

USN

EDITION JUNE 2002

PRINCIPLE : Selflocking effect obtained by axial deformation of the upper part of the thread



D	Pitch	S	H	Designation SNEP
M30	3,50	46	30	USN M30X350 **
M33	3,50	50	33	USN M33X350 **
M36	4,00	55	36	USN M36X400 **
M39	4,00	60	39	USN M39X400 **
M42	4,50	65	42	USN M42X450 **
M45	4,50	70	45	USN M45X450 **
M48	5,00	75	48	USN M48X500 **
M52	5,00	80	52	USN M52X500 **
M56	5,50	85	56	USN M56X550 **
M60	5,50	90	60	USN M60X550 **
M64	6,00	95	64	USN M64X600 **
M68	6,00	100	68	USN M68X600 **
M72	6,00	105	72	USN M72X600 **
M76	6,00	110	76	USN M76X600 **
M80	6,00	115	80	USN M80X600 **

Material codes	
Steel R60	R60
Steel R80	R80
Stainless steel A2	A2
Stainless steel A4	A4

Nut type

∅ nominal + pitch

Material code

DIMENSIONS : According to NFE 25 411 until M52

THREAD : Profile ISO - according to ISO 965-2 Quality 6H

STANDARD PROTECTION

Stainless steel: Anti seizing protection "SITAL BHT"

Nuts R60 : White zinc plated

Nuts R80 : Yellow zinc plated

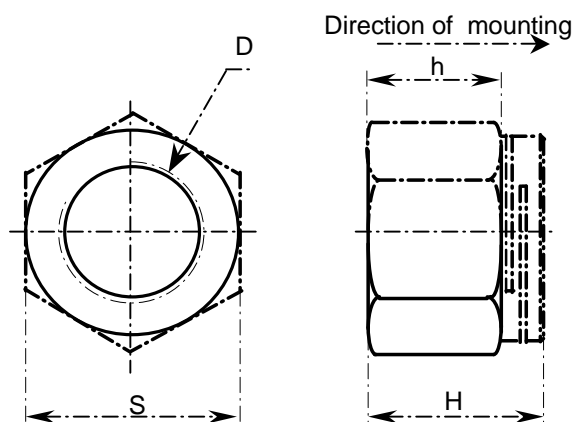
Please consult us for: other materials - other protections - specials.

DOUBLE SLOTTED LOCKING NUTS

DAH

EDITION JUNE 2002

PRINCIPLE : Selflocking effect obtained by axial deformation of the upper part of the thread



D	pitch	S	H	h	Designation	SNEP
MAXI						
M4	0,70	7	5,6	3	DAH M4X070	**
M5	0,80	8	6,5	3,7	DAH M5X080	**
M6	1,00	10	8	4,5	DAH M6X100	**
M8	1,25	13	10	5,5	DAH M8X125	**
M10	1,50	16	12,5	6,5	DAH M10X150	**
M12	1,75	18	15	8,5	DAH M12X175	**
M14	2,00	21	17,5	10	DAH M14X200	**
M16	2,00	24	18,7	12	DAH M16X200	**
M18	2,50	27	22	14	DAH M18X250	**
M20	2,50	30	24	16	DAH M20X250	**
M22	2,50	34	27	19	DAH M22X250	**
M24	3,00	36	24	14	DAH M24X300	**
M27	3,00	41	33	22	DAH M27X300	**

Material codes	
STEELS	CL8 CL10
STAINLESS STEEL	A2/70 A2 A4/80 A4

**Certified "SNCF"
CF 00-040 FP n° 6**

Nut type _____ Material code _____
 \varnothing nominal + pitch _____

DIMENSIONS : According to NFE 25 411

THREAD Profile ISO - according to ISO 965-2 Quality 6H

MECHANICAL CHARACTERISTICS : According to NF EN ISO 2320 NFE 25035
 Control on "ERICHSEN" test bench

STANDARD PROTECTIONS	Steel nuts : yellow zinc plated Stainless steel nuts : Anti seizing protection SITAL BHT
-----------------------------	---

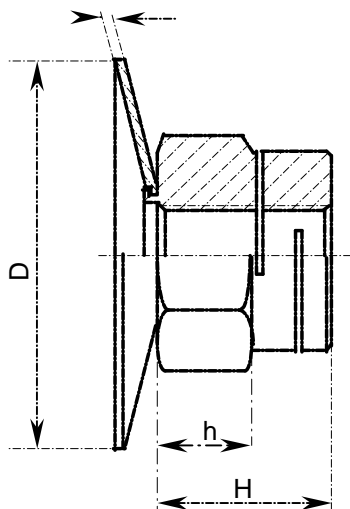
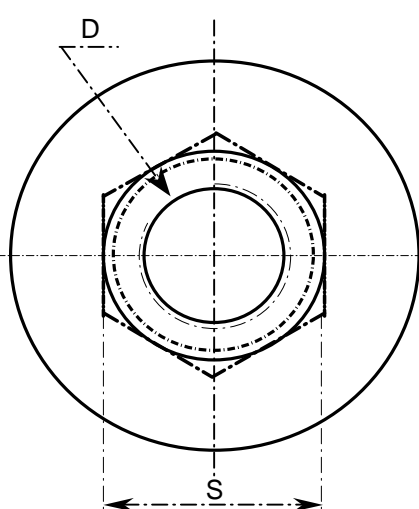
Please consult us for: other materials - other protections - specials.

DOUBLE SLOTTED LOCKING NUT WITH CONICAL LOOSE WASHER

DAH RC

EDITION JUNE 2002

PRINCIPLE : Selflocking effect obtained by axial deformation of the upper part of the thread



D	Pitch	S	H	e	D	Designation SNEP
M6	1,00	10	10	1,5	18	DAH RC M6 D18 **
M10	1,50	16	15,5	2	22	DAH RC M10 D22 **
M10	1,50	16	15,5	2	27	DAH RC M10 D27 **
M12	1,75	18	18,5	2	27	DAH RC M12 D27 **
M12	1,75	18	18,5	2	30	DAH RC M12 D30 **
M14	2,00	21	21	2	30	DAH RC M14 D30 **

Material codes	
Stainless steel A2/70	A2
Stainless steel A4/80	A4

Nut type _____
 Ø nominal + pitch _____

Material code _____
 Ø washer _____

**Certified "SNCF"
 suivant CF 00-040 FP n° 6
 et NFE 25 035**

THREAD

Profile ISO - according to ISO 965-2 Quality 6H

FUNCTIONAL CHARACTERISTICS

Control on "ERICHSEN" bench according FNE 25 035
 Washer test according to NFE 25 415

MECHANICAL CHARACTERISTICS

According to ISO 2320

STANDARD PROTECTIONS

Anti seizing protection : SITAL BHT or STANAL

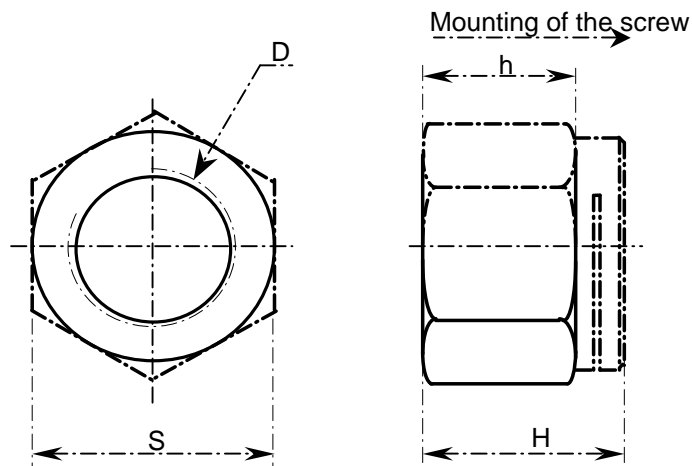
Please consult us for: other materials - other protections - specials.

SINGLE SLOTTED LOCKING NUTS

ESN T2

EDITION OCTOBRE 2001

PRINCIPLE : Selflocking effect obtained by axial deformation of the upper part of the thread



D	Pitch	S	H	h	Designation SNEP	
M4	0,70	7	5,6	3	ESN T2 M4X070	**
M5	0,80	8	6,5	3,7	ESN T2 M5X080	**
M6	1,00	10	8	4,5	ESN T2 M6X100	**
M8	1,25	13	10	5,5	ESN T2 M8X125	**
M10	1,50	16	12,5	6,5	ESN T2 M10X150	**
M12	1,75	18	15	8,5	ESN T2 M12X175	**
M14	2,00	21	17,5	10	ESN T2 M14X200	**
M16	2,00	24	18,7	12	ESN T2 M16X200	**
M18	2,50	27	22	14	ESN T2 M18X250	**
M20	2,50	30	24	16	ESN T2 M20X250	**
M22	2,50	34	27	19	ESN T2 M22X250	**
M24	3,00	36	24	14	ESN T2 M24X300	**
M27	3,00	41	33	22	ESN T2 M27X300	**

Material codes	
STEEL	CL8 CL10
STAINLESS STEEL	A2/70 A2 A4/80 A4

Nut type

∅ nominal + pitch

Material code

DIMENSIONS : According to NFE 25 411

THREAD Profile ISO - according to ISO 965-2 Quality 6H

MECHANICAL CHARACTERISTICS According to NF EN ISO 2320 NFE 25035
Control on "ERICHSEN" test bench

STANDARD PROTECTIONS

Steel nuts : yellow zinc plated

Stainless steel : Anti seizing protection SITAL BHT

Please consult us for: other materials - other protections - specials.