

Special Application Bearings

including Doctor Blade Bearings for the paper industry



ROTARY LINEAR BEARINGS

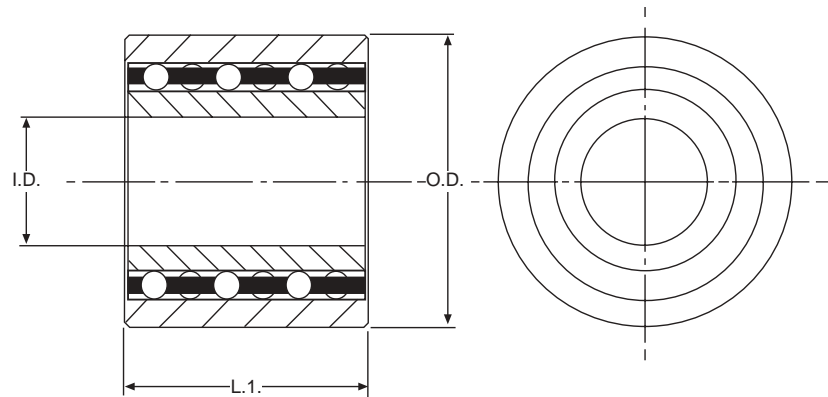
Standard

ROTARY MOTION BEARINGS



For use primarily in the paper industry this rugged standard rotary motion bearing is ideal for use in hostile environments where heavy load bearing is required in conjunction with rotary motion.

These bearings are available in other materials, with bronze liners for extra heavy duty applications.



INCH SERIES *(Dimensions in inches)*

Reference	I.D.	O.D.	L1	Basic Capacity lbf	Static Capacity lbf
SBB 980*	1.6875 1.6870	2.6875 2.6865	3.770	1476	2553
SBB 980/1*	1.6875 1.6870	2.8125 2.8115	3.770	1476	2553
SBB 1571	0.750	1.875	1.500	750	765
SBB 1622	0.875	2.000	1.500	1260	1284
SBB 1623	1.000	2.125	1.500	1300	1360
SBB 1624	1.125	2.250	1.750	1520	1723
SBB 1582	1.250	2.750	1.500	2000	2015
SBB 1625	1.375	2.625	2.000	2600	2687
SBB 1626	1.375	3.000	1.625	2100	2141
SBB 1627	1.500	3.250	1.625	2300	2393
SBB 1628	1.625	3.125	2.250	3520	3989
SBB 1629	1.875	3.750	2.500	3800	4111
SBB 1630	2.000	3.875	2.500	4000	4353
SBB 1631	2.250	4.625	2.875	5760	6995
SBB 1632	2.500	5.000	3.250	6400	7818
SBB 1633	3.000	6.000	4.250	10000	15050
SBB 1634	3.500	7.000	4.250	11400	15117
SBB 1635	4.00	7.750	4.500	11800	16628

*Fitted with bronze end caps

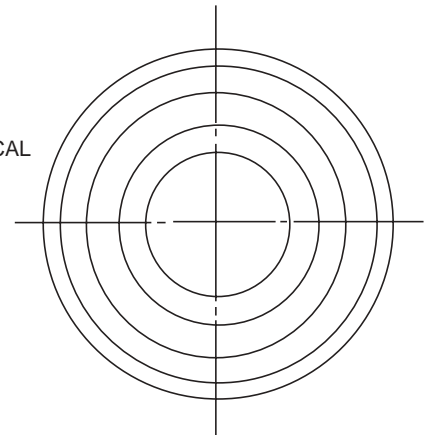
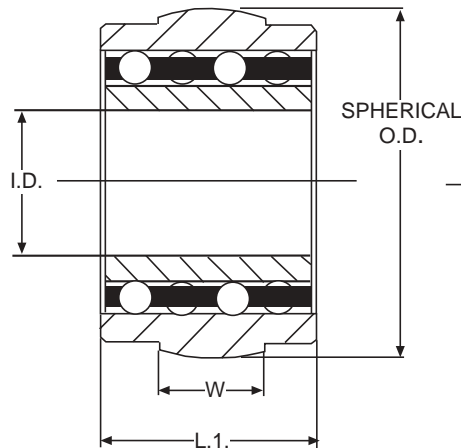
Standard Self-Aligning

ROTARY MOTION BEARINGS



For use primarily in the paper industry this rugged standard self-aligning rotary motion bearing is ideal for use in hostile environments where heavy load bearing is required alongside rotary motion.

These bearings are available in other materials and with bronze liners for extra heavy duty applications, where the requirement for self alignment up to 2° is a prerequisite.



INCH SERIES *(Dimensions in inches)*

REFERENCE	I.D.	Spherical O.D.	Outer Length L1	Spherical Seat Width W	Basic Capacity lbf	Static Capacity lbf
SBB 1612	1.500	3.875	2.500	0.875	4200	5291
SBB 1613	1.750	3.875	2.500	0.875	4400	5542
SBB 1614	2.000	3.875	2.500	0.875	4500	5794
SBB 1615	2.000	5.125	3.625	1.250	6500	9312
SBB 1616	2.250	5.125	3.625	1.250	6550	9312
SBB 1617	2.500	5.125	3.625	1.250	6700	9375
SBB 1618	2.750	5.125	3.625	1.250	6800	10158
SBB 1619	3.000	5.125	3.625	1.250	6850	10158
SBB 1620	3.250	6.000	3.625	1.250	7000	11358
SBB 1576	3.500	6.000	3.625	1.250	7050	11358
SBB 1621	3.500	7.000	5.000	1.750	10500	18518

METRIC SERIES *(Dimensions in mm)*

REFERENCE	I.D.	Spherical O.D.	Outer Length L1	Spherical Seat Width W	Basic Capacity KN	Static Capacity KN
SBB 1430	55	113	79	17	59.80	63.25
SBB 1548	45	98.4	63.5	22.2	40.21	38.74
SBB 1561	55	140	79	40	73.55	89.60
SBB 1779	55	113	79	17	49.39	70.29

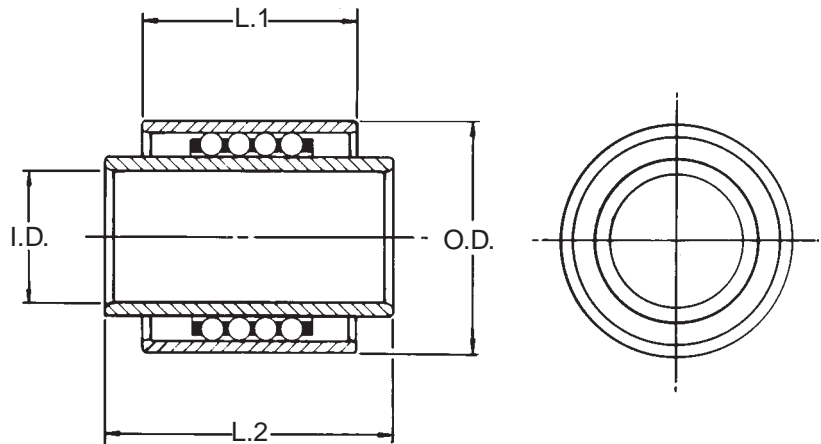
Combination

LINEAR AND ROTARY MOTION BEARINGS



For use primarily in the paper industry this rugged combination rotary motion bearing is ideal for use in hostile environments where heavy load bearing is required alongside rotary motion.

These bearings are available in other materials such as stainless steel with bronze liners for extra heavy duty applications.



INCH SERIES *(Dimensions in inches)*

Reference	I.D.	O.D.	Length L.1	Length L.2	Basic Capacity lbf	Static Capacity lbf	Linear Travel
SBB 596	1.8735	3.624	3.000	3.250	3518	3628	1.000
	1.8725	3.623					
SBB 762	3.498	6.249	5.875	7.875	10000	13605	3.000
	3.497	6.248					
SBB 910	3.248	5.999	4.000	4.500	9000	12900	1.000
	3.247	5.998					
SBB 933	1.751	3.126	2.750	3.000	3400	4703	1.000
	1.750	3.125					
SBB 986	1.751	3.126	2.000	2.250	2400	2820	0.750
	1.750	3.125					
SBB 1008	3.998	6.749	5.000	5.500	8000	14996	1.000
	3.997	6.748					
SBB 1452	1.4985	2.874	2.750	3.000	3400	3779	1.000
	1.4980	2.873					

METRIC SERIES *(Dimensions in mm)*

Reference	I.D.	O.D.	Length L.1	Length L.2	Basic Capacity KN	Static Capacity KN	Linear Travel
SBB 1553	80.025	125.025	80.00	85.00	26.17	35.59	20.00
	80.000	125.000					
SBB 1660	55.000	95.000	65.00	90.00	12.92	18.65	30.00
	54.095	94.985					
SBB 1452	40.000	75.000	60.00	80.00	9.90 KN	11.72	20.00
	39.988	74.987					

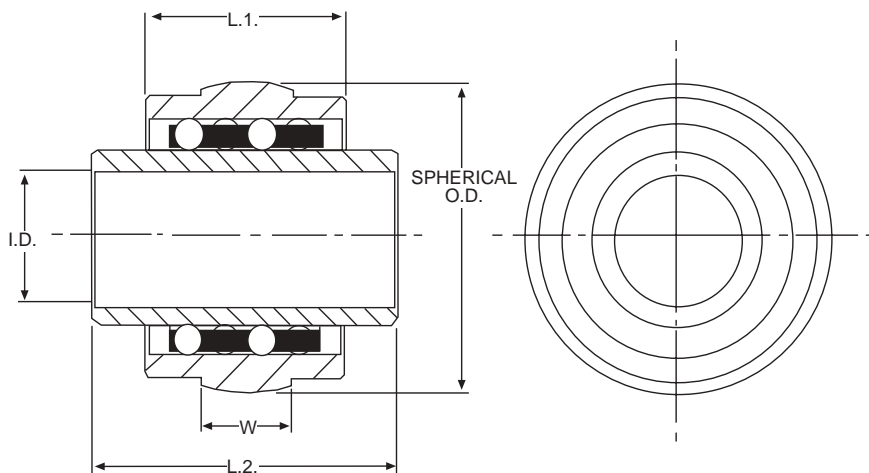
Combination Self-Aligning

LINEAR AND ROTARY MOTION BEARINGS



For use primarily in the paper industry this rugged combination self-aligning rotary motion bearing is ideal for use in hostile environments where heavy load bearing is required alongside rotary motion.

These bearings are available in other material and with bronze liners for extra heavy duty applications.



INCH SERIES *(Dimensions in inches)*

Reference	I.D.	Spherical O.D.	Linear Travel Inches	Outer Length L1	Inner Length L2	Spherical Seat Width W	Basic Capacity lbf	Static Capacity lbf
SBB 1600	1.500	3.875	0.875	2.500	3.375	0.875	4200	5291
SBB 1601	1.750	3.875	0.875	2.500	3.375	0.875	4400	5542
SBB 1602	2.000	3.875	0.875	2.500	3.375	0.875	4500	5794
SBB 1603	2.250	3.875	1.125	2.500	3.875	0.875	2600	3359
SBB 1604	2.250	3.875	1.125	2.500	6.000	0.875	2600	3359
SBB 1575	2.500	4.687	1.125	3.625	6.250	1.250	5000	5761
SBB 1605	2.750	5.125	1.125	3.625	4.750	1.250	6000	8707
SBB 1606	3.000	5.125	1.250	3.625	5.000	1.250	5500	7256
SBB 1607	3.250	6.000	1.250	3.625	5.250	1.250	7000	9465
SBB 1608	3.500	6.000	1.125	3.625	6.000	1.250	7050	9465
SBB 1609	4.000	7.000	2.000	5.000	6.000	1.750	9000	15555
SBB 1610	4.500	7.500	2.000	5.000	6.000	1.750	9500	16707
SBB 1611	5.000	8.000	1.750	5.000	8.000	1.750	11900	21070

METRIC SERIES *(Dimensions in mm)*

Reference	I.D.	Spherical O.D.	Linear Travel Inches	Outer Length L1	Inner Length L2	Spherical Seat Width W	Basic Capacity KN	Static Capacity KN
SBB 1546	45	98.4	16	63.5	85.72	22.2	40.21	38.74

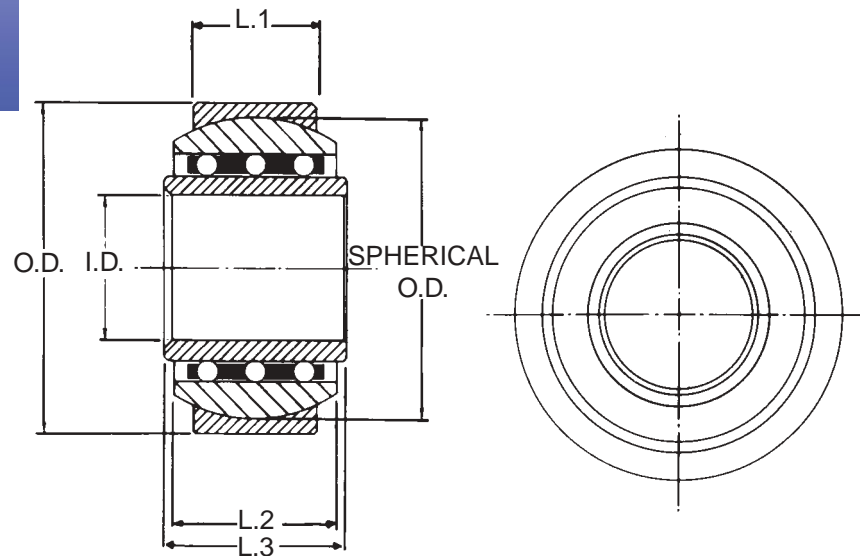
Medium Duty Self-Aligning

LINEAR AND ROTARY MOTION BEARINGS



For use primarily in the paper industry this rugged medium duty self-aligning rotary motion bearing is ideal for use in hostile environments where heavy load bearing is required alongside rotary motion.

These bearings are available in other material and with bronze liners for extra heavy duty applications.



INCH SERIES (Dimensions in inches)

Reference	I.D.	O.D.	Spherical O.D.	Length L.1	Length L.2	Length L.3	Basic Capacity lbf	Static Capacity lbf	Linear Travel
SBB 930	1.751	4.000	3.625	1.500	2.000	2.250	2400	2820	0.500
	1.750	3.999							
SBB 1044	2.251	5.251	4.750	2.500	3.250	4.000	3400	5160	1.000
	2.250	5.250							
SBB 1076	1.751	4.501	4.125	2.000	2.750	3.000	2600	3117	0.875
	1.750	4.500							
SBB 1161	3.501	7.001	6.475	3.500	4.250	5.000	4600	8900	1.000
	3.500	7.000							
SBB 1262	1.626	4.000	3.625	1.500	2.000	4.500	2400	2820	0.750
	1.625	3.999							

METRIC SERIES (Dimensions in mm)

Reference	I.D.	O.D.	Spherical O.D.	Length L.1	Length L.2	Length L.3	Basic Capacity KN	Static Capacity KN	Linear Travel
SBB 1710	80.03	160.00	150.00	55.00	80.00	110.00	28.43	48.53	20.00
	80.00	159.98							

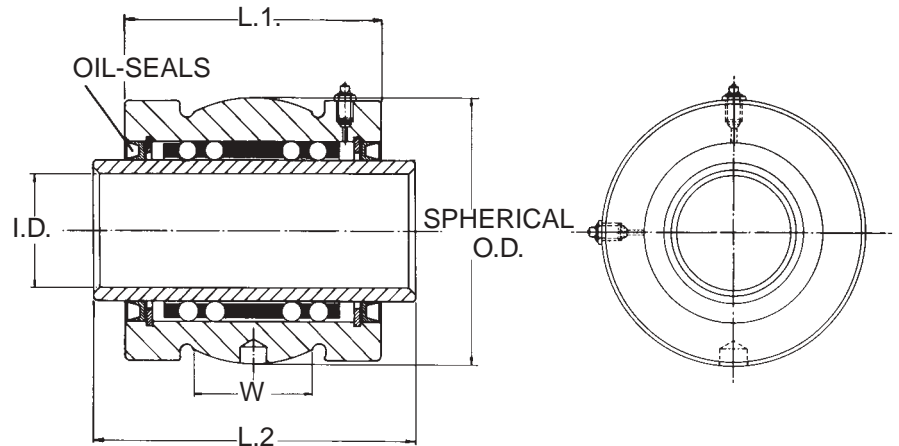
Heavy Duty Self-Aligning

LINEAR AND ROTARY MOTION BEARINGS



For use primarily in the paper industry this rugged heavy duty self-aligning rotary motion bearing is ideal for use in hostile environments where heavy load bearing is required alongside rotary motion.

These bearings are available in other material and with bronze liners for extra heavy duty applications.



INCH SERIES (Dimensions in inches)

Reference	I.D.	Spherical O.D.	Spherical Length W	Length L.1	Length L.2	Basic Capacity lbf	Static Capacity lbf	Linear Travel
SBB 940	2.125	5.000	2.250	4.875	6.125	5750	8042	1.000
	2.124	4.998						
SBB 985	2.625	6.000	2.875	6.187	7.125	7000	10642	0.875
	2.624	5.998						
SBB 1204	2.625	6.000	2.875	6.187	7.125	9000	12040	0.875
	2.624	5.998						
SBB 1051	3.875	8.500	4.000	8.000	9.500	12000	20640	1.375
	3.874	8.499						
SBB 1156	3.501	6.875	2.250	4.937	6.000	5500	7860	1.000
	3.500	6.870						
SBB 1181	3.501	6.875	2.250	4.937	6.000	7000	9876	1.000
	3.500	6.870						
SBB 1330	4.500	9.3125	4.552	10.400	11.875	19000	38000	1.500
	4.499	9.3115						
SBB 1389	3.502	7.750	2.500	6.875	7.875	13800	20000	1.000
	3.501	7.748						

METRIC SERIES (Dimensions in mm)

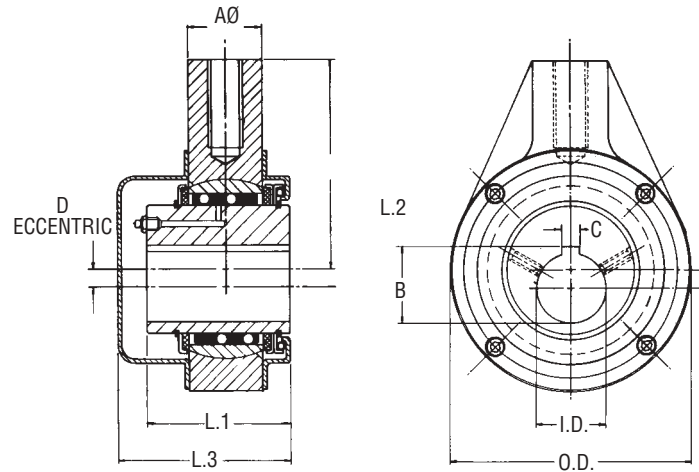
Reference	I.D.	Spherical O.D.	Spherical Length W	Length L.1	Length L.2	Basic Capacity KN	Static Capacity KN	Linear Travel
SBB 1550	87.312	163.499	56.00	125.40	152.40	30.13	44.48	20.00
	87.287	163.449						

Detachable Self-Aligning Eccentric Bearings

FOR GENERATING
ECCENTRIC MOTION



Eccentric bearing primarily used to produce oscillating motion for doctor blade applications in paper mills.



INCH SERIES (Dimensions in inches)

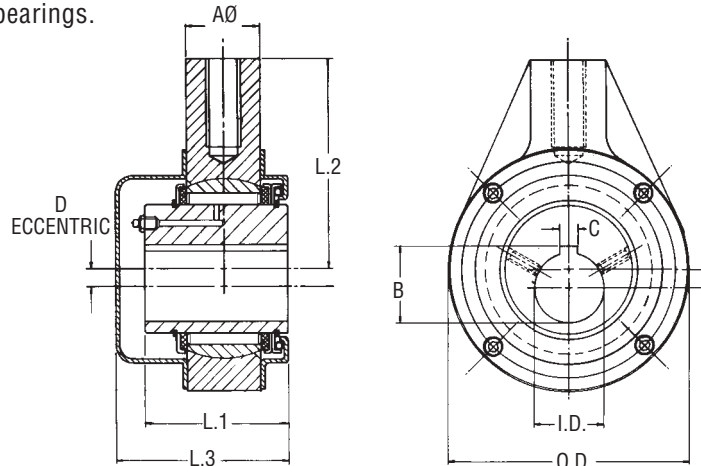
Reference	I.D.	O.D.	AØ	L.1	L.2	L.3	B	C	D Eccentric	Basic Capacity lbf	Static Capacity lbf
SBB 1002	1.496	5.25	1.625	3.125	4.50	3.625	1.630	0.392	0.375	2500	2530
	1.495							0.394			
SBB 1436	1.496	5.25	1.625	3.125	4.50	3.625	1.630	0.392	0.187	2500	2530
	1.495							0.394			
SBB 1482	1.496	5.25	1.625	3.125	4.50	3.625	1.630	0.392	0.250	2500	2530
	1.495							0.394			
SBB 1486	1.378	5.25	1.625	3.125	4.50	3.625	1.508	0.392	0.375	2500	2530
	1.379							0.394			
SBB 1514	1.548	5.25	1.625	3.125	4.50	3.625	1.630	0.392	0.375	2500	2530
	1.501							0.394			
SBB 1569	1.378	5.25	1.625	3.125	4.50	3.625	1.508	0.392	0.197	2500	2530
	1.379							0.394			
SBB 1669	1.770	5.25	1.625	3.125	4.50	3.625	1.929	0.548	0.250	2500	2530
	1.771							0.550			
SBB 1675	1.770	5.25	1.625	3.125	4.50	3.625	1.929	0.548	0.197	2500	2530
	1.771							0.550			
SBB 1685	1.770	5.25	1.625	3.125	4.50	3.625	1.929	0.548	0.197	2500	2530
	1.771							0.550			
SBB 1704	1.496	5.25	1.625	3.125	4.50	3.625	1.630	0.392	0.197	2500	2530
	1.495							0.394			
SBB 1711	1.770	5.25	1.625	3.125	3.70	3.625	1.929	0.548	0.197	2500	2530
	1.771							0.550			
SBB 1791	1.770	5.25	1.625	3.125	4.50	3.625	1.929	0.548	0.197	2500	2530
	1.771							0.550			

Heavy Duty Detachable Eccentric Self-Aligning Bearing

FOR GENERATING ECCENTRIC MOTION



For additional load capacity rollers, are used in place of the standard ball bearings.



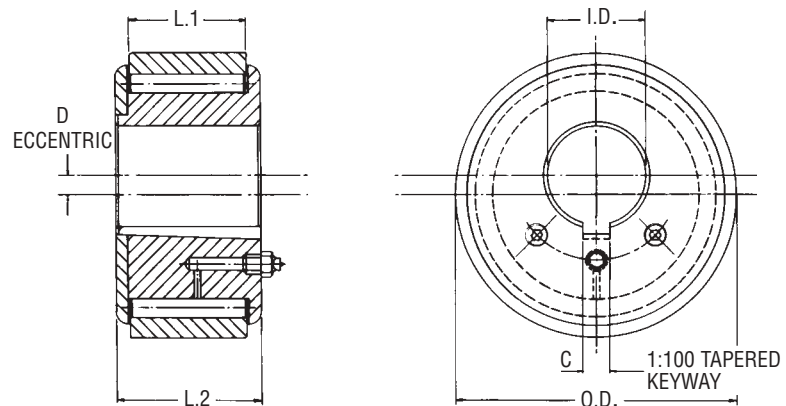
(Dimensions in inches)

Reference	I.D.	O.D.	AØ	L.1	L.2	L.3	B	C	D Eccentric	Basic Capacity lbf	Static Capacity lbf
SBB 1709	1.770"	5.25"	1.625"	3.125"	4.50"	3.625"	1.929"	0.548"	0.197"	22355	40000
	1.771"							0.550"			
SBB 1820	2.126"	5.25"	1.625"	3.125"	4.50"	3.625"	2.349"	0.500"	0.187"	22355	40000
	2.125"						2.355"	0.501"			

Heavy Duty Eccentric Roller Bearings



Heavy duty roller eccentric motion bearings primarily used to produce oscillating motion for doctor blade applications in paper mills where high load carrying capability is required.

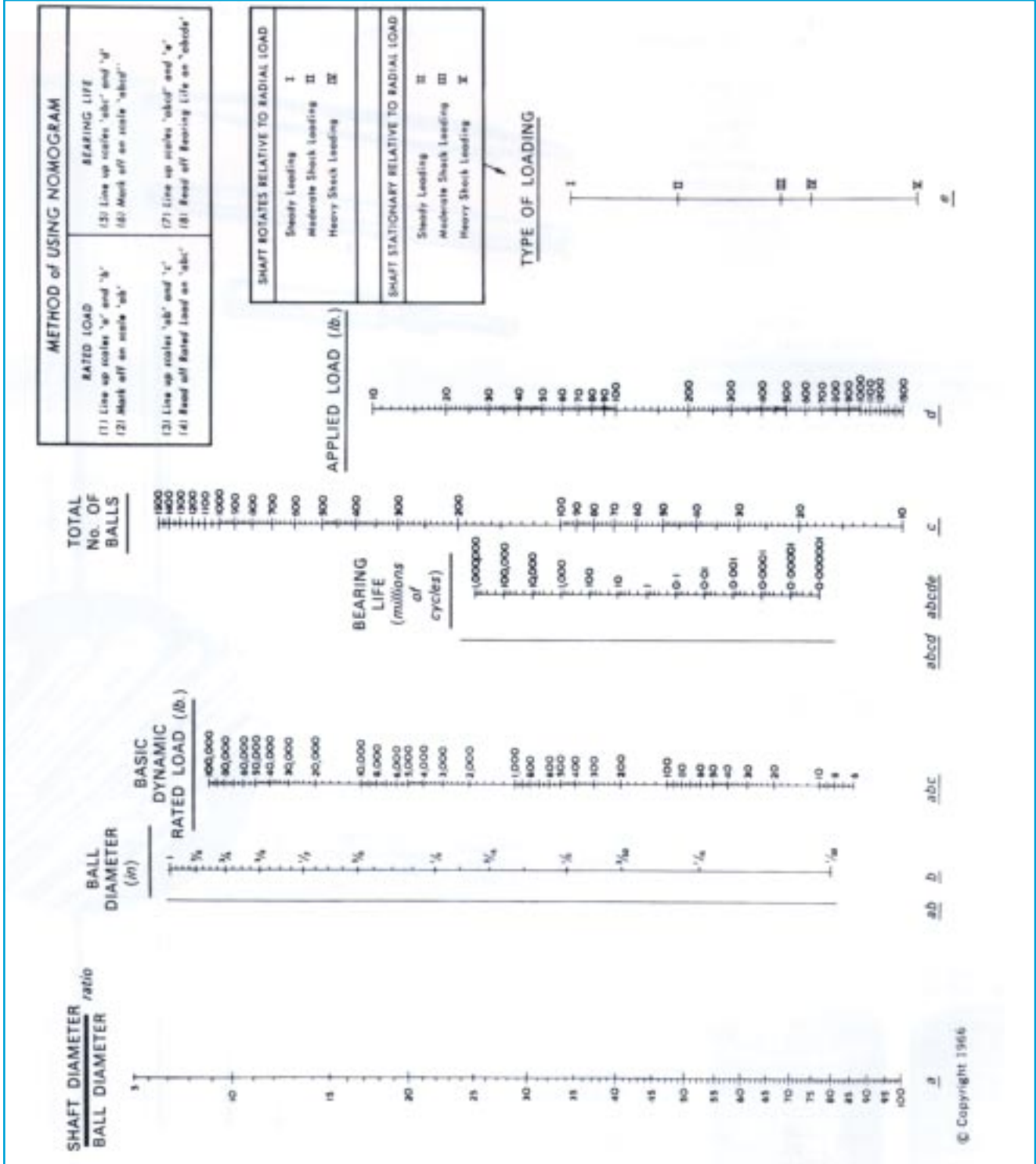


(Dimensions in inches)

HEAVY DUTY ROLLER ECCENTRIC

Reference	I.D.	O.D.	L.1	L.2	C	D Eccentric	Basic Capacity lbf	Static Capacity lbf
SBB 644	1.938	5.375	2.000	2.562	0.500	0.187	45000	79500
	1.937	5.371						

Nomogram for rated load and bearing life calculations



ROTARY LINEAR BEARINGS