



Silicone Products: up to +300°C

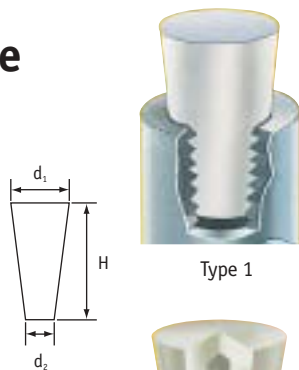
SR 1045

High-Temperature Plugs

Natural Silicone Rubber

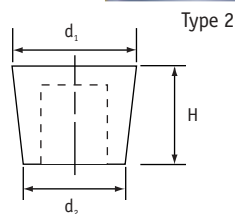
Type 1

- Recommended for plating, anodising, spray painting & other finishing applications
- Excellent sealing capacity
- Ideal for plain and threaded holes
- High temperature resistance



Type 2

- Cost-effective solution for larger sizes due to hollowed centre
- More flexible than solid plugs allowing easier application



Part Number	Type	To Fit Thread Size			Dimensions (mm)			Std Pack Qty
		Metric	UNF	BSP	d ₁	d ₂	H	
461518	1	M64	–	2"	62.7	50.0	25.4	50
461519	1	M64	–	2"	63.5	54.0	25.4	50
461520	1	–	–	–	68.3	57.9	25.4	50
461521	1	–	–	2 1/2"	75.0	61.9	34.9	50
461522	1	–	–	3"	88.9	76.2	38.1	10
461523	1	–	–	–	101.6	82.6	38.1	10
461524	1	–	–	4"	127	88.9	50.8	5
110060	2	–	1 1/2"	–	39.0	31.0	25.0	50
110061	2	M42, M45	–	1 3/8"	43.0	36.0	25.0	50
110062	2	–	–	–	46.0	38.0	25.0	50
110063	2	–	–	–	53.0	45.0	25.0	25
110064	2	M60, M62	–	–	63.0	50.0	25.0	25

High-Temperature Plugs are also available in Black EPDM, see page 172

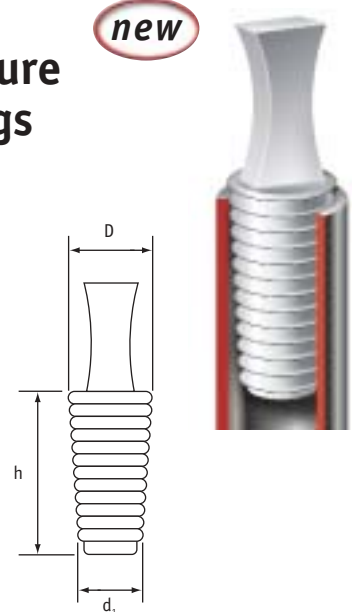
SR 1093

High-Temperature Flangeless Plugs

Natural Silicone Rubber

new

- Designed to mask holes without masking the surrounding area
- Tapered rings and hollow core allow many different-sized holes to be masked
- Pull-tab allows easy installation and removal



Part Number	Dimensions (mm)			Std Pack Qty
	D	d ₁	h	
461465	6.0	4.0	25.4	1000
461466	8.0	6.0	25.4	1000
461467	10.0	8.0	25.4	1000
461468	12.0	10.0	25.4	500
461469	14.0	12.0	25.4	500
461470	16.0	14.0	25.4	200
461471	18.0	16.0	25.4	200
461472	20.0	18.0	25.4	200
461473	22.5	20.0	25.4	200
461474	24.0	22.5	25.4	200
461475	26.0	24.0	25.4	100
461476	28.0	26.0	25.4	100
461477	28.6	25.4	25.4	100
461478	31.8	28.6	25.4	100

High-Temperature Flangeless Plugs are also available in Black EPDM and TPR, see pages 172 & 176

extended range

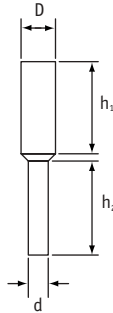
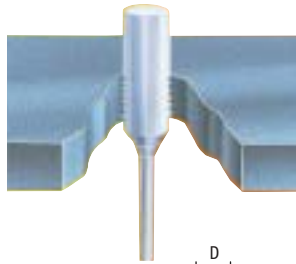
Part Number	Type	To Fit Thread Size			Dimensions (mm)			Std Pack Qty
		Metric	UNF	BSP	d ₁	d ₂	H	
461493	1	–	–	–	1.6	0.4	15.9	1000
461494	1	M2	–	–	2.0	0.5	19.1	1000
41321	1	M2	–	–	3.2	0.8	15.9	1000
41322	1	M3	–	–	3.2	1.6	15.9	1000
41323	1	M3, M4	–	–	4.8	1.6	15.9	1000
461495	1	M3, M4	–	–	4.8	1.6	19.1	1000
461496	1	M3, M4, M5	–	–	5.5	1.2	38.1	1000
41324	1	M5, M6	1/4"	–	6.4	3.2	19.1	1000
461497	1	M5, M6	3/8"	–	6.4	3.2	25.4	1000
41325	1	M7, M8	5/8"	1/16"	8.7	4.8	15.9	1000
461498	1	M7, M8	5/8"	1/16"	8.7	4.8	25.4	1000
461499	1	M10	3/8"	1/8"	9.5	6.4	12.7	100
461500	1	M10	3/8"	1/8"	9.5	6.4	19.1	100
461501	1	M12	7/16"	–	11.1	8.7	17.5	100
43008	1	M10, M12	3/8"	1/8"	11.1	6.4	25.4	500
41327	1	M12	7/16"	–	11.9	8.7	20.6	500
461502	1	M10, M12, M14	7/16", 1/2", 9/16"	1/4"	14.3	7.9	28.6	100
461503	1	M10, M12, M14	7/16", 1/2", 9/16"	1/4"	14.3	7.9	25.4	100
41328	1	M14, M16	1/2", 9/16"	–	15.1	10.3	25.4	100
461504	1	M14, M16	9/16", 5/8"	3/8"	15.9	11.1	22.2	100
41329	1	M16	5/8"	3/8"	16.7	12.7	25.4	200
461505	1	M14, M16, M18	5/8"	3/8"	17.5	11.1	25.4	100
461506	1	M18, M20	3/4"	–	19.1	14.3	14.3	100
41330	1	M18, M20	3/4"	–	19.1	14.3	25.4	100
41331	1	M20	3/4"	1/2"	19.8	15.9	25.4	100
461507	1	M20, M22	3/4"	1/2"	20.3	15.9	15.9	100
461508	1	M22, M24	7/8"	–	23.5	19.1	19.1	100
41314	1	M22, M24	7/8"	–	23.8	18.3	25.4	100
41332	1	M24, M27	1"	3/4"	25.4	19.8	25.4	100
41333	1	M27	–	–	27.0	23.0	25.4	100
41334	1	M30	1 1/8"	–	27.9	23.8	25.4	100
41335	1	M33	1 1/4"	–	31.8	26.2	25.4	100
41336	1	M33	1 1/4", 1 3/8"	1"	33.4	27.0	25.4	100
461509	1	M36	1 3/8"	–	36.5	30.2	25.4	100
461510	1	M39	1 1/2"	–	38.9	31.8	25.4	100
461511	1	M39, M42	1 1/2"	1 1/4"	41.3	33.3	25.4	100
461512	1	M42	–	1 1/4"	42.9	35.7	25.4	100
461513	1	M48	–	–	44.5	37.3	25.4	100
461514	1	M48	–	1 1/2"	46.0	38.1	25.4	100
461515	1	–	–	1 1/2"	50.0	41.3	25.4	50
461516	1	M56	–	–	52.4	44.5	25.4	50
461517	1	M56	–	–	56.0	47.6	25.4	50



SR 1057 High-Temperature Pull Plugs

Natural Silicone Rubber

- Ideal for masking threaded and plain through-holes
- Pull-tab allows plugs to be pulled into hole to be masked, and pulled out after use

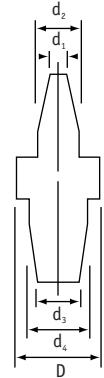


Part Number	Dimensions (mm)				Std Pack Qty
	D	d	h ₁	h ₂	
461922	1.6	1.2	9.5	8.6	1000
461923	1.7	1.2	15.9	15.5	1000
39726	1.9	1.2	15.5	15.0	1000
461924	2.3	1.3	15.9	15.9	1000
39714	2.4	1.3	17.8	17.8	1000
461590	2.7	2.1	25.4	25.4	1000
461591	2.8	1.6	25.4	25.4	1000
461592	3.0	2.1	25.4	25.4	1000
461593	3.2	1.6	15.9	15.9	1000
39727	3.3	2.4	16.5	17.8	500
461594	3.3	2.4	25.4	25.4	1000
461595	3.6	2.2	15.9	14.2	1000
461596	3.9	1.6	16.1	15.9	1000
461597	4.0	1.6	15.9	19.1	1000
461598	4.0	2.1	31.8	31.8	500
39716	4.1	2.4	15.9	14.8	500
39717	5.0	2.8	15.9	15.9	500
461599	5.0	2.8	25.4	25.4	500
39718	5.5	3.3	25.4	25.4	1000
461600	5.7	3.2	25.4	25.4	500
461601	6.5	3.3	25.4	25.4	500
39719	7.0	3.2	23.8	23.4	200
461602	7.9	3.9	31.8	31.8	500
461603	8.5	6.4	19.2	27.9	500
461604	8.5	3.9	25.4	25.4	500
39721	8.9	4.9	22.4	23.5	200
461605	9.8	3.9	25.4	25.4	250
39722	10.2	4.0	25.4	25.4	200
461606	10.4	4.9	25.6	25.4	250
461607	10.5	4.0	13.3	19.2	250
461608	11.3	6.5	25.4	25.2	250
461609	11.3	6.5	25.4	25.4	250
39724	11.9	6.4	25.4	25.4	200
461610	12.0	6.2	25.4	25.4	250
461611	12.6	6.4	25.4	25.4	250
461612	13.0	6.5	25.4	24.3	250
39725	13.5	6.4	25.4	25.4	200
461613	15.5	6.4	25.4	25.4	250
461614	16.3	9.5	25.4	25.4	100
461615	18.0	9.5	31.8	33.7	100
461616	19.6	9.5	25.4	23.6	100
461617	22.8	9.5	25.4	25.4	100
461618	25.9	9.5	25.4	24.6	100

SR 1065 High-Temperature Washer Plugs

Natural Silicone Rubber

- Plug threaded or plain holes
- Mask surface area around hole
- Integral washer and plug combination performs as a single unit

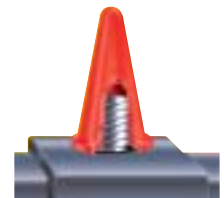


Part Number	To Fit Hole			Dimensions (mm)					Std Pack Qty
	UNF	BSP	Metric	D	d ₁	d ₂	d ₃	d ₄	
43400	1/4"	—	M3	6.4	1.7	4.0	3.7	6.4	1000
43397	—	—	M4, M5	7.9	2.3	3.6	3.0	4.6	1000
43398	5/16"	7/16"	M6, M8	9.5	3.3	5.1	4.0	7.0	1000
43401	5/16"	1/16"	M7, M9	12.7	4.0	7.0	7.3	9.5	1000
43399	3/8", 1/2"	1/8", 1/4"	M10, M12	12.7	7.3	9.9	8.1	11.5	500

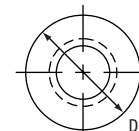
SR 1075 High-Temperature Cone Caps/Plugs

Silicone Rubber

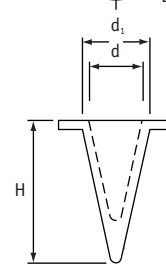
- Versatile dual role: cap masks exposed studs; plug masks exposed holes
- As plug, components can be held by painting hooks
- Various colours for rapid size identification



As a cap



As a plug



Part Number	Dimensions (mm)				Colour	Std Pack Qty
	D	d	d ₁	H		
110050	12.7	3.3	6.3	23.0	Natural	500
461905	12.7	5.5	8.0	25.4	Rust	1000
110051	15.9	4.5	8.5	25.4	Yellow	500
110052	16.5	5.0	10.0	28.0	Brown	500
461906	16.1	5.8	10.1	27.9	Clear	1000
110053	19.1	8.0	14.0	36.0	Black	250
110073	24.9	11.5	17.5	38.1	Green	250
110074	27.9	13.5	19.5	51.0	Blue	100
461915	25.4	14.8	20.8	49.0	Red	200
461916	31.0	16.0	22.0	53.0	Purple	200

High-Temperature Pull Plugs, Washer Plugs and Cone Caps/Plugs are also available in Black EPDM, see pages

173 & 175



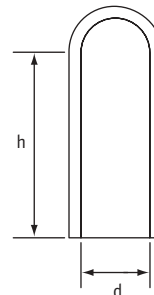
Silicone Products: up to +300°C

SR 1052

High-Temperature Caps

Natural Silicone Rubber

- Flexible, allowing masking of irregular shapes
- Fit over studs, pins or tube ends, providing excellent masking solution
- Can also be used as plugs to mask threaded and non-threaded holes



extended range

Part Number	To Fit Thread Sizes			Dimensions (mm)		Std Pack Qty
	Metric	UNF	BSP	d	h	
461672	—	—	—	0.5	12.7	1000
461673	—	1/16"	—	1.6	19.1	1000
461674	—	1/16"	—	1.8	25.4	1000
41301	—	—	—	2.4	19.1	1000
461675	—	—	—	2.4	25.4	1000
461676	—	—	—	2.5	12.7	1000
461677	—	—	—	2.5	25.4	1000
41302	M3	—	—	2.8	19.1	1000
461678	M3	—	—	2.8	25.4	1000
461679	—	—	—	3.2	12.7	1000
41303	—	—	—	3.2	25.4	1000
461680	—	—	—	3.5	12.7	500
41304	—	—	—	3.5	25.4	1000
461681	M4	—	—	3.8	19.1	500
461682	M4	—	—	3.8	25.4	250
461683	M4	—	—	4.0	12.7	250
41305	M4	—	—	4.0	25.4	1000
461684	M4	—	—	4.0	38.1	250
461685	—	3/16"	—	4.4	12.7	250
41306	—	3/16"	—	4.4	25.4	1000
461686	—	3/16"	—	4.4	38.1	250
461687	—	3/16"	—	4.6	25.4	250
461688	M5	—	—	4.8	12.7	250
41307	M5	—	—	4.8	25.4	1000
461689	—	—	—	5.5	25.4	250
461690	M6	—	—	5.7	12.7	250
461691	M6	—	—	5.7	25.4	250
461692	M6	—	—	5.7	38.1	250
461693	M6	1/4"	—	5.9	12.7	250
41308	M6	1/4"	—	5.9	25.4	1000
461694	M6	1/4"	—	5.9	38.1	250
41309	—	—	—	6.4	25.4	1000
461695	—	—	—	6.4	38.1	250
461696	—	5/16"	—	7.1	12.7	250
41310	—	5/16"	—	7.1	25.4	1000
461697	M8	5/16"	1/16"	7.5	38.1	250
41311	M8	—	—	7.9	25.4	1000
461698	M8	—	—	7.9	38.1	250
461699	—	—	—	8.7	25.4	250
461700	—	—	—	9.0	38.1	250
461701	M10	—	1/8"	9.5	12.7	250
461702	M10	—	1/8"	9.5	19.1	250
41312	M10	—	1/8"	9.5	25.4	1000
461703	M10	—	1/8"	9.5	38.1	250
461704	—	—	—	10.3	25.4	250
41315	—	7/16"	—	11.1	25.4	200
461705	—	—	—	11.6	25.4	100
461706	M12	—	—	11.6	38.1	100
41316	M12	1/2"	—	11.9	25.4	200
461707	—	1/2"	—	12.2	38.1	100
41317	—	1/2"	1/4"	12.7	38.1	200
461708	—	1/2"	1/4"	12.7	76.2	100
461709	—	1/2"	1/4"	12.7	101.6	100
41318	M14	—	—	13.6	38.1	500
461710	M14	—	—	13.6	76.2	100
461711	M15	—	—	14.3	16.7	100
461712	M15	—	—	14.3	27.9	100
41319	M15	—	—	14.3	38.1	200

Part Number	To Fit Thread Sizes			Dimensions (mm)		Std Pack Qty
	Metric	UNF	BSP	d	h	
461713	—	—	—	15.2	38.1	100
461714	M17	5/8"	3/8"	15.9	31.8	100
41350	M17	5/8"	3/8"	15.9	38.1	200
461715	M17	5/8"	3/8"	15.9	57.2	100
461716	—	—	—	17.5	15.9	100
461717	—	—	—	17.5	38.1	100
461718	—	—	—	17.5	44.5	100
461719	—	—	—	17.5	63.5	100
461720	—	—	—	18.5	38.1	100
461721	—	—	—	18.5	109.9	100
41351	M20	3/4"	—	19.1	38.1	200
461722	M20	3/4"	—	19.1	48.9	100
461723	M20	3/4"	—	19.1	88.9	100
461724	M20	3/4"	—	19.1	109.2	100
461725	M22	7/8"	1/2"	20.6	25.4	100
41352	M22	7/8"	1/2"	20.6	38.1	100
461726	M22	7/8"	—	21.5	72.2	100
41353	—	—	—	22.2	38.1	100
461727	M24	—	—	23.8	38.1	100
461728	—	—	—	24.6	38.1	100
461729	—	—	—	24.6	101.6	100
461730	M27	1"	—	25.4	20.8	100
461892	M27	1"	—	25.4	38.1	100
461731	M27	1"	—	25.4	50.8	100
461732	—	—	—	27.5	76.2	100
461893	M30	—	—	28.6	38.1	100
461733	—	—	—	30.1	59.0	100
461734	M33	1 1/4"	1"	31.8	38.1	100
461735	M39	1 1/2"	—	38.1	25.4	100
461736	M39	1 1/2"	—	38.1	38.1	100
461737	M39	1 1/2"	—	38.1	44.5	100
461738	—	—	1 1/4"	41.3	50.8	50
461739	—	1 1/4"	—	44.5	38.1	50
461740	—	1 3/4"	—	44.5	50.8	50
461741	—	—	1 1/2"	47.6	50.8	50
461742	—	—	—	50.8	50.8	50
461743	—	—	—	53.5	50.8	50

Standard wall thickness – 1.5mm.

High-Temperature Caps are also available in Black EPDM, for details see page

174

Need tapes too?

See our wide range of masking tapes on page

178



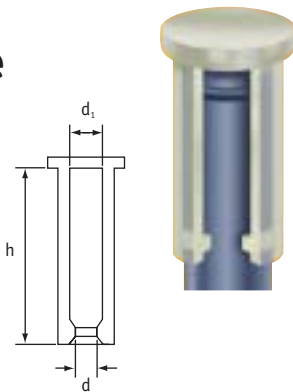


SR 1073 High-Temperature EzeCaps

Natural Silicone Rubber

- Internal seal prevents paint ingress
- Flanged for easy removal

extended range



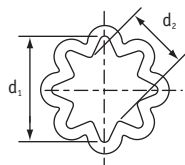
Part Number	Dimensions (mm)			Std Pack Qty
	d	d ₁	h	
461839	3.2	6.4	50.8	500
461840	4.0	7.2	30.0	500
461841	4.6	7.8	50.8	500
461842	4.8	7.9	35.0	500
461843	5.9	9.1	50.8	500
461844	6.0	9.2	30.0	500
461845	6.5	9.7	23.1	500
461846	7.0	10.2	30.0	500
461847	7.5	10.6	33.8	250
461848	8.0	11.2	24.7	250
461849	9.0	12.2	38.1	250
461850	9.5	12.7	36.1	250
461851	11.1	14.3	24.1	250
461852	11.5	14.6	30.9	250
461853	12.3	15.5	25.7	250
461854	13.5	16.7	30.0	250
461855	15.4	18.6	30.0	250

High-Temperature EzeCaps are also available in Black EPDM, see page 175

SR 1051 Flexitube

Silicone Rubber

- Ideal for protecting or masking threads
- Supplied in one-metre lengths
- Easily cut to suit requirements
- Unique design fits several diameters



Part Number	Colour	Dimensions (mm)		To Fit Stud Diameters (mm)	Std Pack Qty
		d ₁	d ₂		
39674	Red	5.3	2.8	3.0-5.0	25m
39675	Yellow	7.3	4.8	5.0-7.0	25m
39676	White	9.5	6.5	7.0-9.0	25m
39677	Blue	11.5	8.5	9.0-11.0	25m
39678	Green	14.0	10.7	11.0-13.5	25m

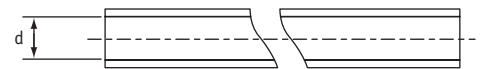
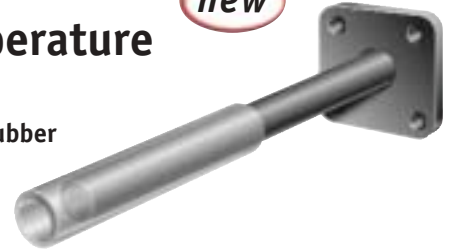
Shorter lengths and alternative materials available; please contact our sales office for more details.

SR 1088 High-Temperature Tubing

new

Natural Silicone Rubber

- Excellent solution for masking long studs and pins where caps are too short
- Standard wall thickness – 1.6mm
- Supplied on a roll



Part Number	Dimensions (mm)		Std Pack Qty
	d		
461431	1.0		30m
461432	1.6		30m
461433	2.0		30m
461434	2.4		30m
461435	2.8		30m
461436	3.2		30m
461437	3.6		30m
461438	4.0		30m
461439	4.4		30m
461440	4.7		30m
461441	5.2		30m
461442	5.5		30m
461443	5.9		30m
461444	6.4		30m
461445	7.1		15m
461446	7.9		15m
461447	8.7		15m
461448	9.5		15m
461449	10.3		15m
461450	11.1		15m
461451	12.7		15m
461452	15.9		15m
461453	19.1		15m
461454	22.2		15m
461455	23.8		15m
461456	25.4		15m
461457	28.6		7m
461458	31.8		7m
461459	34.9		7m
461460	38.1		7m
461461	41.3		7m
461462	44.5		7m
461463	47.6		7m
461464	50.8		7m

Thinner wall option (0.8mm) also available; please contact our sales office for more details.

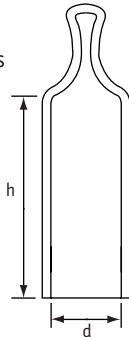


High-Temperature PVC Products: up to +220°C

SR 1072 Multi-Flex Caps

Yellow Flexible PVC

- Easy fitting and removal
- Plain or threaded applications
- Unique design fits a range of diameters

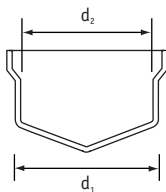


Part Number	To Fit Thread Size			Dimensions (mm)		Std Pack Qty
	Metric	UNF	BSP	d	h	
MFYJ-090-025	M10	3/8"	1/8"	9.0-11.0	25.0	5000
MFYJ-110-025	M12	7/16", 1/2"	1/4"	11.0-13.5	25.0	2000
MFYJ-135-030	M14	9/16", 5/8"	—	13.5-16.5	30.0	2000
MFYJ-165-040	M16, M18	3/4"	3/8"	16.5-20.0	40.0	1500
MFYJ-200-050	M20, M22, M24	7/8"	1/2", 5/8"	20.0-24.0	50.0	1500

SR 1070 Flexiplugs

Yellow Flexible PVC

- Resistant to tearing, splitting and shredding

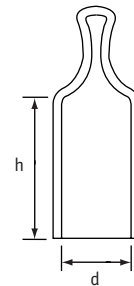


Part Number	Dimensions (mm)		To Fit Thread Size		Std Pack Qty
	d ₁	d ₂	Metric	UNF	
FPYJ-072	7.2	4.4	M8	5/16"	5000
FPYJ-091	9.1	6.4	M10	3/8"	5000
FPYJ-103	10.3	7.5	—	7/16"	5000
FPYJ-118	11.8	9.0	M12	1/2"	5000
FPYJ-135	13.5	10.7	M14	9/16"	5000
FPYJ-154	15.4	12.6	M16	5/8"	2500
FPYJ-191	19.1	16.3	M20	3/4"	2000
FPYJ-216	21.6	18.8	M24	7/8"	2500
FPYJ-258	25.8	23.0	M27	1 1/16"	2500
FPYJ-302	30.2	27.4	M33	1 3/16"	2500

SR 1066 Pull-Tab Flexicaps

Yellow Flexible PVC

- Easy fitting and removal



Part Number	To Fit Thread Size			Dimensions (mm)		Std Pack Qty
	Metric	BSP	UNF	d	h	
PCYJ-0053-013	M6	—	7/32"	5.3	13.0	5000
PCYJ-0061-013	—	—	1/4"	6.1	13.0	5000
PCYJ-0075-013	—	—	—	7.5	13.0	5000
PCYJ-0075-025	—	—	—	7.5	25.0	5000
PCYJ-0077-013	M8	—	5/16"	7.7	13.0	7500
PCYJ-0077-025	—	—	—	7.7	25.0	7500
PCYJ-0093-013	M10	1/8"	3/8"	9.3	13.0	5000
PCYJ-0093-025	—	—	—	9.3	25.0	5000
PCYJ-0097-013	—	—	—	9.7	13.0	2500
PCYJ-0097-025	—	—	—	9.7	25.0	2500
PCYJ-0108-013	—	—	7/16"	10.8	13.0	5000
PCYJ-0108-025	—	—	—	10.8	25.0	5000
PCYJ-0111-013	—	—	—	11.1	13.0	2500
PCYJ-0111-025	—	—	—	11.1	25.0	2500
PCYJ-0119-013	M12	—	1/2"	11.9	13.0	5000
PCYJ-0119-025	—	—	—	11.9	25.0	5000
PCYJ-0124-013	—	1/4"	1/2"	12.4	13.0	5000
PCYJ-0132-013	M14	—	11/32"	13.2	13.0	5000
PCYJ-0132-025	—	—	—	13.2	25.0	2500
PCYJ-0143-025	M15	—	9/16"	14.3	25.0	2500
PCYJ-0153-013	M16	—	—	15.3	13.0	2500
PCYJ-0153-025	—	—	—	15.3	25.0	2000
PCYJ-0159-025	—	3/8"	5/8"	15.9	25.0	2000
PCYJ-0175-013	M18	—	11/16"	16.25	13.0	2500
PCYJ-0175-025	—	—	—	16.25	25.0	2500
PCYJ-0188-013	M20	—	3/4"	18.8	13.0	2500
PCYJ-0188-025	—	—	—	18.8	25.0	2500
PCYJ-0200-013	—	—	—	20.0	13.0	2500
PCYJ-0200-025	—	—	—	20.0	25.0	2500
PCYJ-0206-013	M22	1/2"	13/16"	20.6	13.0	2500
PCYJ-0206-025	—	—	—	20.6	25.0	2000
PCYJ-0220-025	—	5/8"	7/8"	22.0	25.0	2000
PCYJ-0238-025	—	—	—	23.8	25.0	1500
PCYJ-0251-025	M26	—	1"	25.1	25.0	1500
PCYJ-0269-025	—	—	—	26.9	25.0	1500
PCYJ-0312-038	M32	1"	1 1/4"	31.2	38.0	1000
PCYJ-0408-038	—	—	1 5/8"	40.8	38.0	350

Other sizes available; please contact our sales office for more details.

**Need to mask longer studs and pins?
See silicone tubing
on page 169**



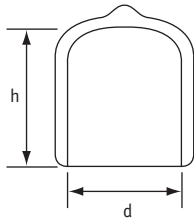


High-Temperature PVC Products: up to +220°C

SR 1044 Flexicaps

Yellow Flexible PVC

- Flexible, durable caps for a multitude of uses
- Attractive vinyl appearance – suitable for finished applications



Part Number	To Fit Thread Size			Dimensions (mm)		Std Pack Qty
	Metric	BSP	UNF	d	h	
FCYJ-0020-013	–	–	–	2.0	13.0	5000
FCYJ-0028-013	M3	–	–	2.8	13.0	5000
FCYJ-0032-013	M3	–	–	3.2	13.0	5000
FCYJ-0036-013	M4	–	–	3.6	13.0	5000
FCYJ-0036-019	M4	–	–	3.6	19.0	5000
FCYJ-0036-025	M4	–	–	3.6	25.0	5000
FCYJ-0039-013	–	–	–	3.9	13.0	5000
FCYJ-0039-019	–	–	–	3.9	19.0	5000
FCYJ-0039-025	–	–	–	3.9	25.0	5000
FCYJ-0044-013	M5	–	3/16"	4.4	13.0	5000
FCYJ-0044-019	M5	–	3/16"	4.4	19.0	5000
FCYJ-0044-025	M5	–	3/16"	4.4	25.0	5000
FCYJ-0048-013	M5	–	3/16"	4.8	13.0	5000
FCYJ-0048-019	M5	–	3/16"	4.8	19.0	5000
FCYJ-0048-025	M5	–	3/16"	4.8	25.0	5000
FCYJ-0052-013	–	–	–	5.2	13.0	5000
FCYJ-0052-019	–	–	–	5.2	19.0	5000
FCYJ-0052-025	–	–	–	5.2	25.0	5000
FCYJ-0055-013	–	–	–	5.5	13.0	5000
FCYJ-0055-019	–	–	–	5.5	19.0	5000
FCYJ-0055-025	–	–	–	5.5	25.0	5000
FCYJ-0059-013	M6	–	1/4"	5.9	13.0	5000
FCYJ-0059-019	M6	–	1/4"	5.9	19.0	5000
FCYJ-0059-025	M6	–	1/4"	5.9	25.0	5000
FCYJ-0064-013	–	–	1/4"	6.4	13.0	5000
FCYJ-0064-019	–	–	–	6.4	19.0	5000
FCYJ-0064-025	–	–	–	6.4	25.0	5000
FCYJ-0077-013	M8	–	5/16"	7.7	13.0	5000
FCYJ-0077-019	M8	–	5/16"	7.7	19.0	5000
FCYJ-0077-025	M8	–	5/16"	7.7	25.0	5000
FCYJ-0079-013	M8	–	5/16"	7.9	13.0	5000
FCYJ-0079-019	M8	–	5/16"	7.9	19.0	5000
FCYJ-0079-025	M8	–	5/16"	7.9	25.0	5000
FCYJ-0083-013	–	–	–	8.3	13.0	5000
FCYJ-0083-019	–	–	–	8.3	19.0	5000
FCYJ-0083-025	–	–	–	8.3	25.0	5000
FCYJ-0087-013	–	–	–	8.7	13.0	5000
FCYJ-0087-019	–	–	–	8.7	19.0	5000
FCYJ-0087-025	–	–	–	8.7	25.0	5000
FCYJ-0095-013	M10	1/8"	3/8"	9.5	13.0	5000
FCYJ-0095-019	M10	1/8"	3/8"	9.5	19.0	5000
FCYJ-0095-025	M10	1/8"	3/8"	9.5	25.0	5000
FCYJ-0103-013	–	–	–	10.3	13.0	5000
FCYJ-0103-019	–	–	–	10.3	19.0	5000
FCYJ-0103-025	–	–	–	10.3	25.0	5000
FCYJ-0111-013	M12	–	7/16"	11.1	13.0	5000
FCYJ-0111-019	M12	–	7/16"	11.1	19.0	5000
FCYJ-0111-025	M12	–	7/16"	11.1	25.0	5000
FCYJ-0119-013	M12	–	1/2"	11.9	13.0	5000
FCYJ-0119-019	M12	–	1/2"	11.9	19.0	5000
FCYJ-0119-025	M12	–	1/2"	11.9	25.0	5000
FCYJ-0127-013	–	1/4"	1/2"	12.7	13.0	5000
FCYJ-0127-019	–	1/4"	1/2"	12.7	19.0	2500

Part Number	To Fit Thread Size			Dimensions (mm)		Std Pack Qty
	Metric	BSP	UNF	d	h	
FCYJ-0127-025	–	1/4"	1/2"	12.7	25.0	5000
FCYJ-0135-013	M14	–	–	13.5	13.0	5000
FCYJ-0135-019	M14	–	–	13.5	19.0	5000
FCYJ-0135-025	M14	–	–	13.5	25.0	5000
FCYJ-0138-013	M14	–	–	13.8	13.0	2500
FCYJ-0138-019	M14	–	–	13.8	19.0	2500
FCYJ-0138-025	M14	–	–	13.8	25.0	5000
FCYJ-0143-013	M15	–	9/16"	14.3	13.0	5000
FCYJ-0143-019	M15	–	9/16"	14.3	19.0	2500
FCYJ-0143-025	M15	–	9/16"	14.3	25.0	5000
FCYJ-0152-013	–	–	–	15.2	13.0	5000
FCYJ-0152-019	–	–	–	15.2	19.0	5000
FCYJ-0152-025	–	–	–	15.2	25.0	5000
FCYJ-0159-013	M16	3/8"	–	15.9	13.0	5000
FCYJ-0159-019	M16	3/8"	–	15.9	19.0	5000
FCYJ-0159-025	M16	3/8"	–	15.9	25.0	2500
FCYJ-0174-013	M18	–	–	17.4	13.0	5000
FCYJ-0174-019	M18	–	–	17.4	19.0	4000
FCYJ-0174-025	M18	–	–	17.4	25.0	2000
FCYJ-0191-013	M20	–	3/4"	19.1	13.0	5000
FCYJ-0191-019	M20	–	3/4"	19.1	19.0	2500
FCYJ-0191-025	M20	–	3/4"	19.1	25.0	2500
FCYJ-0199-013	–	–	–	19.9	13.0	2500
FCYJ-0199-019	–	–	–	19.9	19.0	2500
FCYJ-0199-025	–	–	–	19.9	25.0	2500
FCYJ-0206-013	–	1/2"	–	20.6	13.0	2500
FCYJ-0206-025	–	1/2"	–	20.6	25.0	2500
FCYJ-0206-038	–	1/2"	–	20.6	38.0	1000
FCYJ-0214-013	M22	–	–	21.4	13.0	5000
FCYJ-0214-025	M22	–	–	21.4	25.0	2500
FCYJ-0214-038	M22	–	–	21.4	38.0	1200
FCYJ-0222-013	–	5/8"	7/8"	22.2	13.0	5000
FCYJ-0222-025	–	5/8"	7/8"	22.2	25.0	2500
FCYJ-0222-038	–	5/8"	7/8"	22.2	38.0	1250
FCYJ-0238-013	M24	–	–	23.8	13.0	5000
FCYJ-0238-025	M24	–	–	23.8	25.0	1250
FCYJ-0238-038	M24	–	–	23.8	38.0	1000
FCYJ-0246-013	M25	–	–	24.6	13.0	5000
FCYJ-0246-025	M25	–	–	24.6	25.0	1000
FCYJ-0246-038	M25	–	–	24.6	38.0	1000
FCYJ-0254-013	–	–	1"	25.4	13.0	2500
FCYJ-0254-025	–	–	1"	25.4	25.0	2000
FCYJ-0254-038	–	–	1"	25.4	38.0	1250
FCYJ-0263-013	M27	3/4"	1"	26.3	13.0	1000
FCYJ-0263-025	M27	3/4"	1"	26.3	25.0	1000
FCYJ-0269-013	M27	–	–	26.9	13.0	4000
FCYJ-0269-025	M27	–	–	26.9	25.0	1500
FCYJ-0269-038	M27	–	–	26.9	38.0	1000
FCYJ-0286-025	M30	7/8"	1 1/8"	28.6	25.0	1000
FCYJ-0286-038	M30	7/8"	1 1/8"	28.6	38.0	500
FCYJ-0286-050	M30	7/8"	1 1/8"	28.6	50.0	600
FCYJ-0302-025	–	7/8"	–	30.2	25.0	1000
FCYJ-0302-038	–	7/8"	–	30.2	38.0	1000
FCYJ-0302-050	–	7/8"	–	30.2	50.0	500
FCYJ-0318-025	–	1"	1 1/4"	31.8	25.0	1000
FCYJ-0318-038	–	1"	1 1/4"	31.8	38.0	1000
FCYJ-0318-050	–	1"	1 1/4"	31.8	50.0	500
FCYJ-0349-025	M35	–	1 1/4"	34.9	25.0	1000
FCYJ-0349-038	M35	–	1 1/8"	34.9	38.0	650
FCYJ-0349-050	M35	–	1 3/8"	34.9	50.0	500
FCYJ-0381-025	M39	–	1 1/2"	38.1	25.0	1000
FCYJ-0381-038	M39	–	1 1/2"	38.1	38.0	600
FCYJ-0381-050	M39	–	1 1/2"	38.1	50.0	500
FCYJ-0413-025	M42	1 1/4"	–	41.3	25.0	900
FCYJ-0413-038	M42	1 1/4"	–	41.3	38.0	500
FCYJ-0413-050	M42	1 1/4"	–	41.3	50.0	400
FCYJ-0445-025	M45	1 3/8"	–	44.5	25.0	500
FCYJ-0445-038	M45	1 3/8"	–	44.5	38.0	500
FCYJ-0445-050	M45	1 3/8"	–	44.5	50.0	400
FCYJ-0476-025	M48	1 1/2"	–	47.6	25.0	625
FCYJ-0476-038	M48	1 1/2"	–	47.6	38.0	400
FCYJ-0476-050	–	1 1/2"	–	47.6	50.0	350
FCYJ-0508-025	–	–	2"	50.8	25.0	550
FCYJ-0508-038	–	–	2"	50.8	38.0	400
FCYJ-0508-050	–	–	2"	50.8	50.0	200



EPDM Products: up to +180°C

SR 1089

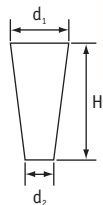
High-Temperature Plugs

new

Black EPDM

Type 1

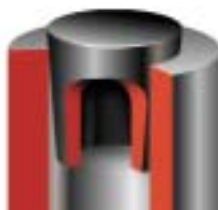
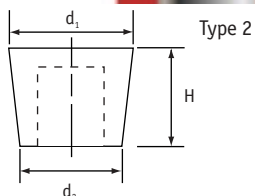
- Recommended for plating, anodising, spray painting and other finishing applications
- Excellent sealing capacity
- Ideal for plain and threaded holes



Type 1

Type 2

- Cost-effective solution for larger sizes due to hollowed centre
- More flexible than solid plugs allowing easier application



Type 2

Part Number	Type	To Fit Thread Size			Dimensions (mm)			Std Pack Qty
		Metric	UNF	BSP	d ₁	d ₂	H	
461525	1	–	–	–	1.6	0.4	15.9	1000
461526	1	M2	–	–	2.0	0.5	19.1	1000
461527	1	M2	–	–	3.2	0.8	15.9	1000
461528	1	M3	–	–	3.2	1.6	15.9	1000
461529	1	M3, M4	–	–	4.8	1.6	15.9	1000
461530	1	M3, M4	–	–	4.8	1.6	19.1	1000
461531	1	M3, M4, M5	–	–	5.5	1.2	38.1	1000
461532	1	M5, M6	1/8"	–	6.4	3.2	19.1	1000
461533	1	M5, M6	1/8"	–	6.4	3.2	25.4	1000
461534	1	M7, M8	5/16"	1/16"	8.7	4.8	15.9	1000
461535	1	M7, M8	5/16"	1/16"	8.7	4.8	25.4	1000
461536	1	M10	3/8"	1/8"	9.5	6.4	12.7	100
461537	1	M10	3/8"	1/8"	9.5	6.4	19.1	100
461538	1	M12	7/16"	–	11.1	8.7	17.5	100
461539	1	M10, M12	3/8"	1/8"	11.1	6.4	25.4	100
461540	1	M12	7/16"	–	11.9	8.7	20.6	100
461541	1	M10, M12, M14	7/16", 1/2", 9/16"	1/4"	14.3	7.9	28.6	100
461542	1	M10, M12, M14	7/16", 1/2", 9/16"	1/4"	14.3	7.9	25.4	100
461543	1	M14, M16	1/2", 9/16"	–	15.1	10.3	25.4	100
461544	1	M14, M16	9/16", 5/8"	3/8"	15.9	11.1	22.2	100
461545	1	M16	5/8"	3/8"	16.7	12.7	25.4	100
461546	1	M14, M16, M18	5/8"	3/8"	17.5	11.1	25.4	100
461547	1	M18, M20	3/4"	–	19.1	14.3	14.3	100
461548	1	M18, M20	3/4"	–	19.1	14.3	25.4	100
461549	1	M20	3/4"	1/2"	19.8	15.9	25.4	100
461550	1	M20, M22	3/4"	1/2"	20.3	15.9	15.9	100
461551	1	M22, M24	7/8"	–	23.5	19.1	19.1	100
461552	1	M22, M24	7/8"	–	23.8	18.3	25.4	100
461553	1	M24, M27	1"	3/4"	25.4	19.8	25.4	100
461554	1	M27	–	–	27.0	23.0	25.4	100
461555	1	M30	1 1/8"	–	27.9	23.8	25.4	100
461556	1	M33	1 1/4"	–	31.8	26.2	25.4	100
461557	1	M33	1 1/4", 1 1/8"	1"	33.4	27.0	25.4	100
461558	1	M36	1 3/8"	–	36.5	30.2	25.4	100
461559	1	M39	1 1/2"	–	38.9	31.8	25.4	100
461560	1	M39, M42	1 1/2"	1 1/4"	41.3	33.3	25.4	100
461561	1	M42	–	1 1/4"	42.9	35.7	25.4	100
461562	1	M48	–	–	44.5	37.3	25.4	100
461563	1	M48	–	1 1/2"	46.0	38.1	25.4	100
461564	1	–	–	1 1/2"	50.0	41.3	25.4	50

Part Number	Type	To Fit Thread Size			Dimensions (mm)			Std Pack Qty
		Metric	UNF	BSP	d ₁	d ₂	H	
461565	1	M56	–	–	52.4	44.5	25.4	50
461566	1	M56	–	–	56.0	47.6	25.4	50
461567	1	M64	–	2"	62.7	50	25.4	50
461568	1	M64	–	2"	63.5	54	25.4	50
461569	1	–	–	–	68.3	57.9	25.4	50
461570	1	–	–	2 1/2"	75.0	61.9	34.9	50
461571	1	–	–	3"	88.9	76.2	38.1	10
461572	1	–	–	–	101.6	82.6	38.1	10
461573	1	–	–	4"	127	88.9	50.8	5
461574	2	–	1 1/2"	–	39.0	31.0	25	50
461575	2	M42, M45	–	1 3/8"	43.0	36.0	25	50
461581	2	–	–	–	46.0	38.0	25	50
461582	2	–	–	–	53.0	45.0	25	25
461583	2	M60, M62	–	–	63.0	50.0	25	25

High-Temperature Plugs are also available in silicone for increased temperature resistance, see page

166

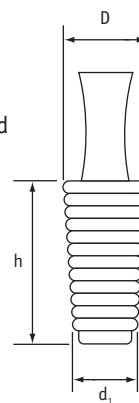
SR 1090

High-Temperature Flangeless Plugs

new

Black EPDM

- Designed to mask holes without masking the surrounding area
- Tapered rings and hollow core allow many different-sized holes to be masked
- Pull-tab allows easy installation and removal



Part Number	Dimensions (mm)			Std Pack Qty
	D	d ₁	h	
461479	6.0	4.0	25.4	1000
461480	8.0	6.0	25.4	1000
461481	10.0	8.0	25.4	1000
461482	12.0	10.0	25.4	500
461483	14.0	12.0	25.4	500
461484	16.0	14.0	25.4	200
461485	18.0	16.0	25.4	200
461486	20.0	18.0	25.4	200
461487	22.5	20.0	25.4	200
461488	24.0	22.5	25.4	200
461489	26.0	24.0	25.4	100
461490	28.0	26.0	25.4	100
461491	28.6	25.4	25.4	100
461492	31.8	28.6	25.4	100

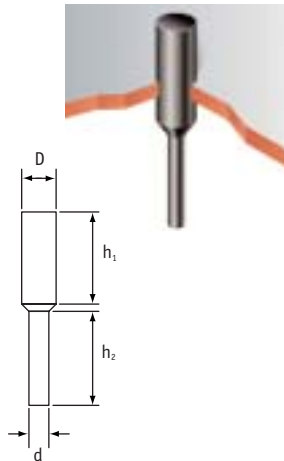
High-Temperature Flangeless Plugs are also available in silicone and TPR, see pages

166 & 176



SR 1094
High-Temperature Pull Plugs

new



Black EPDM

- Ideal for masking threaded and plain through-holes
- Pull-tab allows plugs to be pushed into hole to be masked, and pulled out after use

Part Number	Dimensions (mm)				Std Pack Qty
	D	d	h ₁	h ₂	
461624	1.6	1.2	9.5	8.6	1000
461625	1.7	1.2	15.9	15.5	1000
461626	1.9	1.2	15.5	15.0	1000
461627	2.3	1.3	15.9	15.9	1000
461628	2.4	1.3	17.8	17.8	1000
461629	2.7	2.1	25.4	25.4	1000
461630	2.8	1.6	25.4	25.4	1000
461631	3.0	2.1	25.4	25.4	1000
461632	3.2	1.6	15.9	15.9	1000
461633	3.3	2.4	16.5	17.8	1000
461634	3.3	2.4	25.4	25.4	1000
461635	3.6	2.2	15.9	14.2	1000
461636	3.9	1.6	16.1	15.9	1000
461637	4.0	1.6	15.9	19.1	1000
461638	4.0	2.1	31.8	31.8	500
461639	4.1	2.4	15.9	14.8	500
461640	5.0	2.8	15.9	15.9	500
461641	5.0	2.8	25.4	25.4	500
461642	5.5	3.3	25.4	25.4	500
461643	5.7	3.2	25.4	25.4	500
461644	6.5	3.3	25.4	25.4	500
461645	7.0	3.2	23.8	23.4	500
461646	7.9	3.9	31.8	31.8	500
461647	8.5	6.4	19.2	27.9	500
461648	8.5	3.9	25.4	25.4	500
461649	8.9	4.9	22.4	23.5	250
461650	9.8	3.9	25.4	25.4	250
461651	10.2	4.0	25.4	25.4	250
461652	10.4	4.9	25.6	25.4	250
461653	10.5	4.0	13.3	19.2	250
461654	11.3	6.5	25.4	25.2	250
461655	11.3	6.5	25.4	25.4	250
461656	11.9	6.4	25.4	25.4	250
461657	12.0	6.2	25.4	25.4	250
461658	12.6	6.4	25.4	25.4	250
461659	13.0	6.5	25.4	24.3	250
461660	13.5	6.4	25.4	25.4	250
461666	15.5	6.4	25.4	25.4	250
461667	16.3	9.5	25.4	25.4	100
461668	18.0	9.5	31.8	33.7	100
461669	19.6	9.5	25.4	23.6	100
461670	22.8	9.5	25.4	25.4	100
461671	25.9	9.5	25.4	24.6	100

High-Temperature Pull Plugs and Washer Plugs are also available in silicone for higher temperature resistance, see page

167

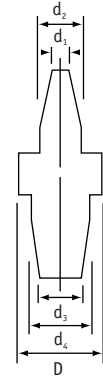
SR 1092
High-Temperature Washer Plugs

new



Black EPDM

- Plug threaded or plain holes
- Mask surface area around hole
- Integral washer and plug combination performs as single unit



Part Number	To Fit Hole Size			Dimensions (mm)					Std Pack Qty
	Metric	UNF	BSP	D	d ₁	d ₂	d ₃	d ₄	
461619	M3	3/16"	—	6.4	1.7	4.0	3.7	6.4	1000
461620	M4, M5	—	—	7.9	2.3	3.6	3.0	4.6	1000
461621	M6, M8	5/16"	1/16"	9.5	3.3	5.1	4.0	7.0	1000
461622	M7, M9	5/16"	1/16"	12.7	4.0	7.0	7.3	9.5	1000
461623	M10, M12	3/8", 1/2"	3/8", 1/4"	12.7	7.3	9.9	8.1	11.5	500

Have you tried Magnetic Masking?

- Very quick and easy to apply
- No adhesive means no residue!
- Re-usable therefore cost effective



new

- No material wastage with die-cut shapes
 - Suitable for masking and shotblasting applications
- Product is available in custom-made die-cut shapes or on reels.

For a quote or further information please contact our sales office.



EPDM Products: up to +180°C

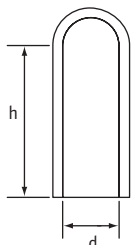
SR 1095

High-Temperature Caps

Black EPDM

- Flexible, allowing masking of irregular shapes
- Fit over studs, pins or tube ends providing excellent masking solution
- Can be also used as plug to mask threaded and non-threaded holes

new



Part Number	To Fit Thread Sizes			Dimensions (mm)		Std Pack Qty
	Metric	UNF	BSP	d	h	
461744	—	—	—	0.5	12.7	1000
461745	—	1/16"	—	1.6	19.1	1000
461746	—	1/16"	—	1.8	25.4	1000
461747	—	—	—	2.4	19.1	1000
461748	—	—	—	2.4	25.4	1000
461749	—	—	—	2.5	12.7	1000
461750	—	—	—	2.5	25.4	1000
461751	M3	—	—	2.8	19.1	1000
461752	M3	—	—	2.8	25.4	1000
461753	—	—	—	3.2	12.7	1000
461754	—	—	—	3.2	25.4	1000
461755	—	—	—	3.5	12.7	500
461756	—	—	—	3.5	25.4	500
461757	M4	—	—	3.8	19.1	500
461758	M4	—	—	3.8	25.4	250
461759	M4	—	—	4.0	12.7	250
461760	M4	—	—	4.0	25.4	250
461761	M4	—	—	4.0	38.1	250
461762	—	3/16"	—	4.4	12.7	250
461763	—	3/16"	—	4.4	25.4	250
461764	—	3/16"	—	4.4	38.1	250
461765	—	3/16"	—	4.6	25.4	250
461766	M5	—	—	4.8	12.7	250
461767	M5	—	—	4.8	25.4	250
461768	—	—	—	5.5	25.4	250
461769	M6	—	—	5.7	12.7	250
461770	M6	—	—	5.7	25.4	250
461771	M6	—	—	5.7	38.1	250
461772	M6	1/4"	—	5.9	12.7	250
461773	M6	1/4"	—	5.9	25.4	250
461774	M6	1/4"	—	5.9	38.1	250
461775	—	—	—	6.4	25.4	250
461776	—	—	—	6.4	38.1	250
461777	—	5/16"	—	7.1	12.7	250
461778	—	5/16"	—	7.1	25.4	250
461779	M8	5/16"	1/16"	7.5	38.1	250
461780	M8	—	—	7.9	25.4	250
461781	M8	—	—	7.9	38.1	250
461782	—	—	—	8.7	25.4	250
461783	—	—	—	9.0	38.1	250
461784	M10	—	1/8"	9.5	12.7	250
461785	M10	—	7/8"	9.5	19.1	250
461786	M10	—	1/8"	9.5	25.4	250
461787	M10	—	1/8"	9.5	38.1	250
461788	—	—	—	10.3	25.4	250
461789	—	7/16"	—	11.1	25.4	200
461790	—	—	—	11.6	25.4	100
461791	M12	—	—	11.6	38.1	100
461792	M12	1/2"	—	11.9	25.4	100
461793	—	1/2"	—	12.2	38.1	100
461794	—	1/2"	1/4"	12.7	38.1	100
461795	—	1/2"	1/4"	12.7	76.2	100
461796	—	1/2"	1/4"	12.7	101.6	100
461797	M14	—	—	13.6	38.1	100

Part Number	To Fit Thread Sizes			Dimensions (mm)		Std Pack Qty
	Metric	UNF	BSP	d	h	
461798	M14	—	—	13.6	76.2	100
461799	M15	—	—	14.3	16.7	100
461800	M15	—	—	14.3	27.9	100
461801	M15	—	—	14.3	38.1	100
461802	—	—	—	15.2	38.1	100
461803	M17	5/8"	3/8"	15.9	31.8	100
461804	M17	5/8"	3/8"	15.9	38.1	100
461805	M17	5/8"	3/8"	15.9	57.2	100
461806	—	—	—	17.5	15.9	100
461807	—	—	—	17.5	38.1	100
461808	—	—	—	17.5	44.5	100
461809	—	—	—	17.5	63.5	100
461810	—	—	—	18.5	38.1	100
461811	—	—	—	18.5	109.9	100
461812	M20	3/4"	—	19.1	38.1	100
461813	M20	3/4"	—	19.1	48.9	100
461814	M20	3/4"	—	19.1	88.9	100
461815	M20	3/4"	—	19.1	109.2	100
461816	M22	7/8"	1/2"	20.6	25.4	100
461817	M22	7/8"	1/2"	20.6	38.1	100
461818	M22	7/8"	—	21.5	72.2	100
461819	—	—	—	22.2	38.1	100
461820	M24	—	—	23.8	38.1	100
461821	—	—	—	24.6	38.1	100
461822	—	—	—	24.6	101.6	100
461823	M27	1"	—	25.4	20.8	100
461824	M27	1"	—	25.4	38.1	100
461825	M27	1"	—	25.4	50.8	100
461826	—	—	—	27.5	76.2	100
461827	M30	—	—	28.6	38.1	100
461828	—	—	—	30.1	59.0	100
461829	M33	1 1/4"	1"	31.8	38.1	100
461830	M39	1 1/2"	—	38.1	25.4	100
461831	M39	1 1/2"	—	38.1	38.1	100
461832	M39	1 1/2"	—	38.1	44.5	100
461833	—	—	1 1/4"	41.3	50.8	50
461834	—	1 3/4"	—	44.5	38.1	50
461835	—	1 3/4"	—	44.5	50.8	50
461836	—	—	1 1/2"	47.6	50.8	50
461837	—	—	—	50.8	50.8	50
461838	—	—	—	53.5	50.8	50

Standard wall thickness – 1.5mm.

High-Temperature Caps are also available in silicone for higher temperature resistance, for details see page 168

Please request a free sample to evaluate the suitability of a product for your application.



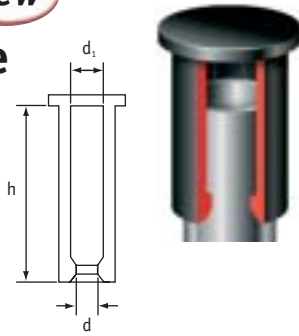
SR 1096

High-Temperature EzeCaps

Black EPDM

- Internal seal prevents paint ingress
- Flanged for easy removal

new



Part Number	Dimensions (mm)			Std Pack Qty
	d	d ₁	h	
461866	3.2	6.4	50.8	500
461867	4.0	7.2	30.0	500
461868	4.6	7.8	50.8	500
461869	4.8	7.9	35.0	500
461870	5.9	9.1	50.8	500
461871	6.0	9.2	30.0	500
461872	6.5	9.7	23.1	500
461873	7.0	10.2	30.0	500
461874	7.5	10.6	33.8	250
461875	8.0	11.2	24.7	250
461876	9.0	12.2	38.1	250
461877	9.5	12.7	36.1	250
461878	11.1	14.3	24.1	250
461879	11.5	14.6	30.9	250
461880	12.3	15.5	25.7	250
461881	13.5	16.7	30.0	250
461882	15.4	18.6	30.0	250

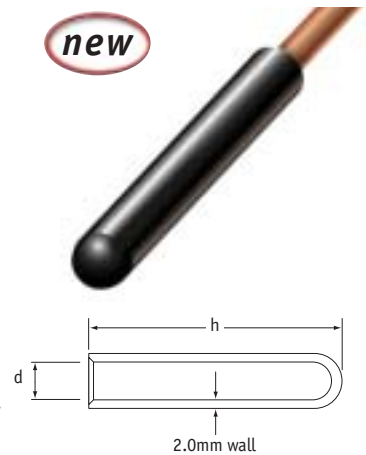
SR 1074

Refrigeration Tube Caps

Black EPDM

- Protect tube ends during painting process
- Thick wall allows easy fitting and removal
- Withstand temperatures up to +180°C
- Tight fitting – stay securely in place during use

new



Part Number	Dimensions (mm)		Std Pack Qty
	d	h	
462034	4.8	42	1000
462035	5.8	30	1000
462036	5.8	50	1000
462037	7.8	22	1000
462038	7.8	60	1000

High-Temperature EzeCaps and Cone Caps/Plugs are also available in silicone 167 & 169 for higher temperature resistance, see pages

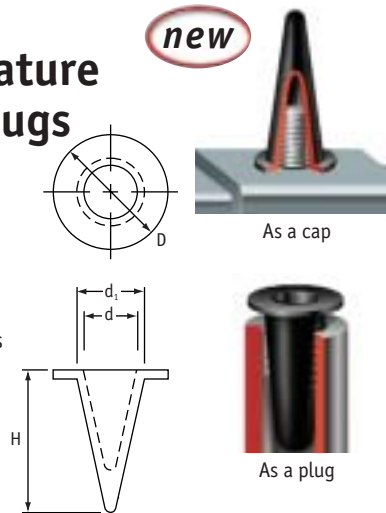
SR 1091

High-Temperature Cone Caps/Plugs

Black EPDM

- Versatile dual role: cap masks exposed studs; plug masks exposed holes
- As plug, components can be held by painting hooks

new



Part Number	Dimensions (mm)				Std Pack Qty
	D	d	d ₁	H	
461894	12.7	3.3	6.3	23.0	1000
461895	12.7	5.5	8.0	25.4	1000
461896	15.9	4.5	8.5	25.4	1000
461897	16.5	5.0	10.0	28.0	1000
461898	16.1	5.8	10.1	27.9	1000
461899	19.1	8.0	14.0	36.0	1000
461900	24.9	11.5	17.5	38.1	250
461901	27.9	13.5	19.5	51.0	200
461902	25.4	14.8	20.8	49.0	200
461903	31.0	16.0	22.0	53.0	200

Customised die-cut shapes

A custom-masking service is now available. We can die cut a range of tapes to suit your specific masking requirements.



The benefits of having a custom-made masking solution are:

- Improved cost-effectiveness due to reduced material wastage during application
- Greater accuracy when masking

Custom masking means that you can specify exactly what you need:

- You can choose from paper (+180°C), polyester (+200°C) or polyimide (+300°C) tapes as standard
- We can die cut any shape up to a maximum width of 445mm
- Die-cut shapes are supplied on a liner for easy removal and application

If you would like more information about our custom die-cutting service, please contact our sales office.



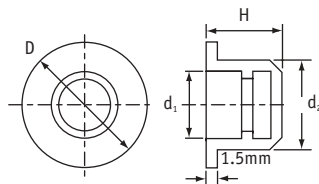
TPR Products: up to +180°C

SR 1014

Moss Plugs

Black Thermoplastic Rubber

- Acid-resistant



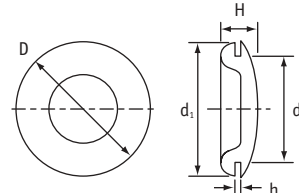
Part Number	Dimensions (mm)				Std Pack Qty
	D	H	d ₁	d ₂	
18071	7.0	9.0	1.6	3.2	10000
12049	11.0	12.0	3.2	5.0	10000
12050	12.0	12.0	3.1	6.0	10000
12051	13.0	12.0	4.5	7.0	10000
12052	14.0	12.0	4.9	8.0	10000
12053	15.0	12.0	6.1	9.0	10000
12054	16.0	12.0	7.0	10.0	10000
12055	17.0	12.0	8.2	11.0	10000
12056	20.0	12.0	9.2	12.0	8000
12057	21.0	14.0	10.2	13.0	8000
12058	22.0	14.0	11.0	14.0	7000
12059	23.0	14.0	12.2	15.0	6000
12060	24.0	14.0	12.9	16.0	6000
12061	27.0	14.0	14.0	17.0	5000
12062	28.0	14.0	15.0	18.0	4000
12063	29.0	14.0	16.1	19.0	4000
12064	30.0	14.0	17.2	20.0	4000
12065	31.0	14.0	18.3	21.0	3000
12066	32.0	14.0	19.0	22.0	3000
12067	33.0	14.0	20.1	23.0	3000
12068	34.0	16.0	21.6	24.0	2500
12069	35.0	16.0	22.2	25.0	2000
12070	36.0	16.0	23.5	26.0	2000
12071	37.0	16.0	23.6	27.0	2000
12072	38.0	16.0	25.2	28.0	2000
12073	39.0	16.0	26.6	29.0	2000
12074	40.0	16.0	27.9	30.0	1000
12501	50.0	22.0	36.4	40.0	700
12502	57.0	22.0	43.2	47.0	500

SR 1751

Blanking Plugs

Black Thermoplastic Rubber

- Acid-resistant



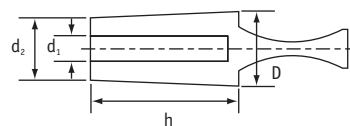
Part Number	Dimensions (mm)					Std Pack Qty
	D	d ₁	d ₂	h	H	
15150	9.3	9.3	4.7	1.6	4.6	10000
15151	9.5	9.5	6.4	1.6	5.0	10000
15155	17.7	12.8	11.2	1.6	6.2	10000
15157	18.7	15.5	12.7	1.6	5.6	10000
15158	20.0	18.4	14.9	1.3	7.0	10000
15159	22.0	19.0	15.5	1.6	7.5	10000
15160	25.0	21.5	19.0	1.6	6.5	5000
15161	25.0	21.5	20.0	1.6	6.5	5000
15162	28.5	26.6	22.0	2.4	8.2	3000
15164	30.0	27.5	24.5	2.4	8.7	4000
15166	32.0	28.3	25.4	1.6	9.0	3000
15165	32.0	28.3	25.4	2.4	9.0	3000
15170	38.2	35.4	32.0	3.1	9.0	2000
15168	38.2	35.4	31.5	1.6	7.5	2000
15171	43.7	43.0	38.2	1.6	8.2	1500
15172	57.5	52.6	51.5	1.6	12.4	1000

SR 1034

Flangeless Plugs

Black Thermoplastic Rubber

- Protect hole without masking surrounding area
- Each size fits a range of threads



Part Number	Dimensions (mm)				Std Pack Qty
	D	d ₂	h	d ₁	
10510#	3.2	1.5	15.0	—	10000
10398	5.0	3.0	15.0	—	10000
18409*	6.0	4.0	25.0	—	6000
18410	8.0	6.0	25.0	2.5	6000
18411*	10.0	8.0	25.0	4.0	4000
18412*	12.0	10.0	25.0	6.0	4000
18413*	14.0	12.0	25.0	8.0	4000
18414	16.0	14.0	25.0	10.0	4000
18415	18.0	16.0	25.0	12.0	2000

* Also available with plain shank.

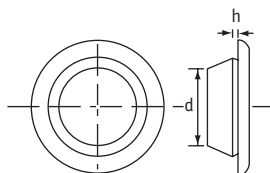
Plain shank only.

SR 1765

Body Plugs

Black Thermoplastic Rubber

- Each size covers a range of panel thicknesses
- Quick to fit



Part Number	Dimensions (mm)		Std Pack Qty
	Panel Hole Size d	Panel Thickness h	
16230	10.0	0.8–2.0	5000
16231	12.0	0.8–2.0	5000
16232	14.0	0.8–2.0	5000
16233	16.0	0.8–2.0	5000
16234	18.0	0.8–2.0	2500
16235	20.0	0.8–2.0	2500
16236	22.0	0.8–2.0	2500
16237	25.0	0.8–2.0	3000
16238	30.0	0.8–2.0	2000
10517	45.0	0.8–2.0	1000

Flangeless Plugs are also available in silicone and EPDM, see pages 166 & 172

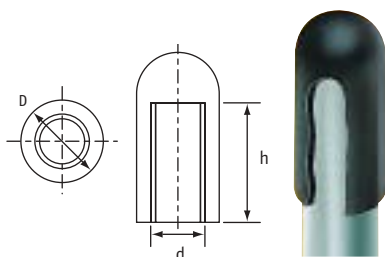


SR 1501

End Tips

Black Thermoplastic Rubber

- Versatile end tips for a multitude of uses



Part Number	Dimensions (mm)			Std Pack Qty
	d	h	D	
15000	2.4	6.6	5.6	20000
110608	2.4	12.2	6.3	20000
15001	2.9	12.2	6.3	20000
15002	3.2	5.3	5.5	20000
15003	3.2	14.2	7.0	20000
15004	3.2	9.7	5.5	20000
110594	3.0	9.7	5.5	20000
15005	4.0	13.4	6.3	20000
110595	4.0	9.7	5.5	20000
15007	4.8	14.2	7.0	20000
15200	5.0	20.3	7.9	10000
10779	6.0	11.0	8.5	20000
15008	6.3	15.5	8.7	20000
15203*	6.4	10.4	7.9	20000
15204*	6.4	13.2	9.5	20000
15209	7.0	18.0	9.8	10000
15011	7.6	17.0	11.0	10000
15205	7.9	13.2	9.5	20000
10780	8.0	17.0	11.0	10000
15010	8.0	24.2	10.5	10000
15206*	9.5	13.3	11.1	15000

* Flat head

SR 1026

Stud Protection Caps

Black Thermoplastic Rubber

- Ideal for protecting exposed studs



Part Number	Dimensions (mm)		Std Pack Qty
	d	h	
15175	4.4	12.7	10000
15207	4.8	41.3	8000
15208	6.4	41.3	7000
15176	7.9	19.1	10000
15178	9.1	27.2	7000
15179	11.1	23.8	6000
15180	11.9	28.6	4000
15182	12.7	27.3	4000

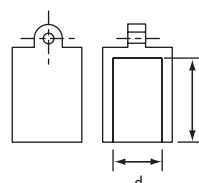
Other sizes available; please contact our sales office for more details.

SR 1021

Moss Caps

Black Thermoplastic Rubber

- Acid-resistant
- Can be used with Moss Support Hooks



Part Number	Dimensions (mm)		Std Pack Qty
	d	h	
12200	5.0	23.5	10000
12201	6.0	25.0	10000
12202	7.0	24.0	10000
12203	8.0	24.5	8000
12204	9.0	25.0	7000
12205	10.0	29.5	5000
12206	11.0	29.0	4500
12207	12.0	29.0	4000
12208	13.0	29.0	3500
12209	14.0	29.5	3000
12210	15.0	29.5	2500
12211	16.0	28.0	2500
12212	17.0	29.5	2000
12213	18.0	28.5	2000
12214	19.0	29.5	2000
12215	20.0	28.5	1600
12216	21.0	34.5	1300
12217	22.0	34.0	1200
12218	23.0	34.5	1000
12219	24.0	34.0	1000
12220	25.0	34.5	1000
12221	26.0	34.5	900
12222	27.0	33.5	900
12223	28.0	33.5	800
12224	29.0	35.0	800
12225	30.0	34.5	600

Need hooks to support your products during finishing?

See page 180



For guidance, please refer to our Materials Properties Chart on page 184.



Tapes: up to +300°C

SR 1059

Polyimide Tape up to +300°C

Polyimide Substrate

- High-performance masking tape
- High chemical and abrasion resistance
- Suitable for powder-coating and electro-coating (E-coating) applications
- Clean removal, no residue



Part Number	Dimensions		Std Pack Qty
	Width (mm)	Length (m)	
200/12	12.0	33.0	72
200/25	25.0	33.0	36
200/50	50.0	33.0	24

SR 1059

Glass Cloth Tape up to +260°C

White Fibreglass Cloth

- Easily removable, leaving no residue
- Resistant to solvents and abrasion
- Tightly-woven glass cloth tape provides good tear strength
- Suitable for high-pressure applications such as sand blasting
- Suitable for powder coating and wet painting



Part Number	Dimensions		Std Pack Qty
	Width (mm)	Length (m)	
600/12	12.0	50.0	96
600/25	25.0	50.0	48

SR 1059

Eze-Wrap Tape up to +260°C

Silicone Rubber

- Self-fusing tape, adheres to itself to form a homogenous mass, providing excellent sealing
- Forms a homogenous mass within 24 hours at room temperature or four minutes at +180°C
- No adhesive, therefore no residue when removed
- Easy to mould to irregular-shaped objects



Part Number	Dimensions		Std Pack Qty
	Width (ins)	Length (yds)	
800/1	1	12	84

SR 1059

Green Polyester Tape up to +200°C

Polyester

- Quick adhesion for time-saving application
- Clean removal, leaving no residue
- General-purpose tape suitable for most masking applications including powder coating and anodising
- Supplied in a 2mm thickness



Part Number	Dimensions		Std Pack Qty
	Width (mm)	Length (m)	
100/12	12.0	66.0	72
100/18	18.0	66.0	48
100/25	25.0	66.0	36
100/30	30.0	66.0	36
100/40	40.0	66.0	24
100/50	50.0	66.0	24
100/75	75.0	66.0	16
100/100	100.0	66.0	12
330/250	250.0	66.0	4
300/450	450.0	66.0	4

SR 1059

Blue Tape up to +200°C

Polyester

- This thinner tape conforms easily to unusual shapes and can be used to mask curved applications
- Quick adhesion for time-saving application
- Clean removal – leaves no residue
- 1mm tape thickness



Part Number	Dimensions		Std Pack Qty
	Width (mm)	Length (m)	
151/12	12.0	66.0	72
151/25	25.0	66.0	36
151/50	50.0	66.0	24

Please request a free sample to evaluate the suitability of a product for your application.



SR 1059

Paper Tape up to +180°C

Crepe Paper

- Three versions of paper masking tape available, each covering different temperature ranges from +80°C to +180°C
- General-purpose masking tape, suitable for most low-temperature applications and for use with synthetic enamels, cellulose and acrylic paints



Part Number	Dimensions		Maximum Temperature	Std Pack Qty
	Width (mm)	Length (m)		
400/25	25.0	50.0	+80°C	48
500/25	25.0	50.0	+135°C	48
900/18*	18.0	50.0	+180°C	64
900/25*	25.0	50.0	+180°C	48

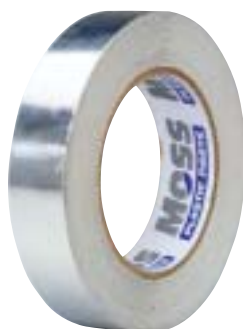
* Features a silicone adhesive system, specially developed for use in high-temperature painting.

SR 1059

Foil Tape up to +180°C

Aluminium Foil

- Acid-resistant
- Suitable for chrome, nickel and various other plating applications
- Suitable for general sealing and heat-reflecting applications to provide additional product protection



Part Number	Dimensions		Std Pack Qty
	Width (mm)	Length (m)	
700/25	25.0	50.0	48

SR 1058

Polyimide Discs up to +300°C

Polyimide Substrate

- High-performance masking discs
- High chemical and abrasion resistance
- Suitable for powder-coating and electro-coating (E-coating) applications
- Clean removal – leave no residue



Part Number	Disc Diameter (mm)	Discs Per Roll	Std Pack Qty
460513	12.0	2000	24
460514	25.0	500	24
460515	40.0	250	24
460516	50.0	250	24



SR 1058

Green Discs up to +200°C

Polyester

- Quick adhesion for time-saving application
- General-purpose discs for a wide variety of applications including powder coating and anodising
- Clean removal – leave no residue

Part Number	Disc Diameter (mm)	Discs Per Roll	Std Pack Qty
460501	12.0	2000	24
460502	15.0	2000	24
460503	18.0	1000	24
460504	20.0	1000	24
460505	25.0	500	24
460506	30.0	500	24
460507	40.0	250	24
460508	50.0	250	24



SR 1058

Blue Discs up to +200°C

Polyester

- General-purpose discs suitable for most masking applications including powder coating and anodising
- Quick adhesion for time-saving application
- Clean removal – leave no residue

Part Number	Disc Diameter (mm)	Discs Per Roll	Std Pack Qty
460509	12.0	2000	24
460510	25.0	500	24
460511	40.0	250	24
460512	50.0	250	24

Urgent Deliveries

We can arrange special deliveries to suit your very urgent needs. Just call.





Support Hooks

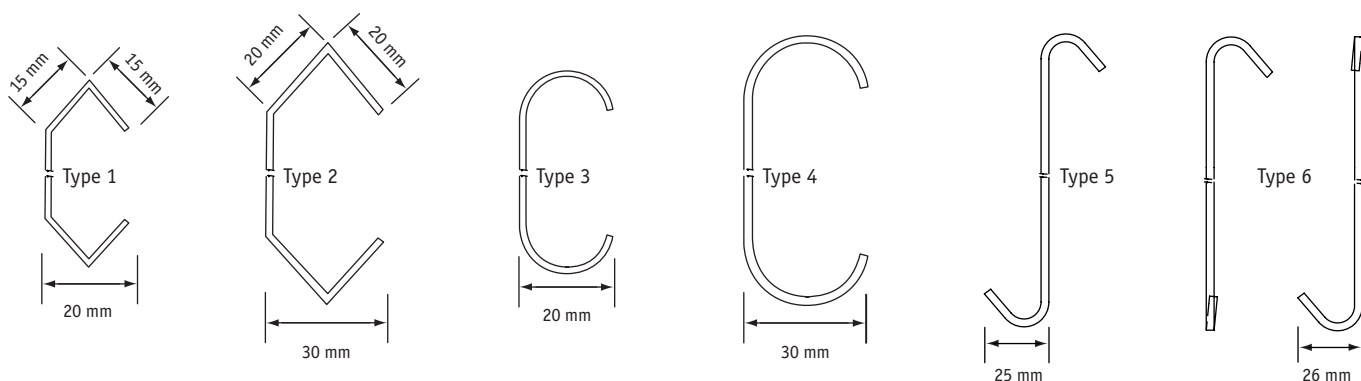
SR 1087

Support Hooks

Copper-drawn Iron Wire

- Suitable for supporting loads during paint finishing, surface treatment and material handling etc.
- Other sizes/styles available to order
- Reusable

Please request a free sample to evaluate load-bearing suitability for your application.



Part Number	Type	Wire Diameter (mm)	Hook Length (mm)	Std Pack Qty
460517	1	0.9	60.0	5000
460518	1	1.5	60.0	5000
460519	1	1.5	75.0	5000
460520	1	1.5	100.0	5000
460521	1	1.5	150.0	5000
460522	1	2.0	60.0	5000
460523	1	2.0	75.0	5000
460524	1	2.0	100.0	5000
460525	1	2.0	150.0	2500
460526	1	2.0	200.0	2500
460527	1	3.0	100.0	2500
460528	1	3.0	150.0	1250
460529	2	2.0	100.0	2500
460530	2	2.0	150.0	2500
460531	2	2.0	200.0	2500
460532	2	3.0	100.0	1250
460533	2	3.0	200.0	1250
460534	3	1.5	100.0	2500
460535	3	2.0	60.0	2500
460536	3	2.0	75.0	2500
460537	3	2.0	100.0	2500
460538	3	2.0	150.0	2500
460539	3	2.0	250.0	2500
460540	4	2.0	100.0	2500
460541	4	2.0	150.0	2500
460542	4	3.0	100.0	1250
460543	4	3.0	150.0	1250
460544	4	3.0	200.0	1250

Part Number	Type	Wire Diameter (mm)	Hook Length (mm)	Std Pack Qty
462569	5	0.9	60	5000
462570	5	0.9	100	5000
462571	5	1.5	75	2500
462572	5	1.5	100	2500
462573	5	1.5	150	2500
462574	5	2.0	100	2500
462575	5	2.0	150	2500
462576	5	2.0	200	2500
462577	5	3.0	100	1250
462578	5	3.0	150	1250
462579	5	3.0	200	1250
462580	5	3.0	250	1250
462581	6	0.9	60	5000
462582	6	0.9	100	5000
462583	6	1.5	75	2500
462584	6	1.5	100	2500
462585	6	1.5	150	2500
462586	6	2.0	100	2500
462587	6	2.0	150	2500
462588	6	2.0	200	2500
462589	6	3.0	100	1250
462590	6	3.0	150	1250
462591	6	3.0	200	1250
462592	6	3.0	250	1250

Please note that measurements may vary by up to 5mm according to length and/or diameter.



SR 1098 Masking Film Yellow and Clear Polythene

new



High-Performance Masking Film

Clear Polythene

- Statically-charged on one side to stick to the application being masked. Leaves no residue on the surface
- Other side of film is treated to ensure that paint and ink stick to it, and do not flake off
- Used to mask large surface areas
- Softening point +80°C, for use up to +100°C
- Supplied on one-metre wide rolls: film folds out to four metres

Part Number	Dimensions (metres)	
	Length	Width
461933	150	4

Standard Masking Film

Yellow Polythene

- Used to mask large surface areas
- Can be secured to surface using tapes from our masking range
- Softening point +80°C, for use up to +100°C
- Supplied on one-metre wide rolls: film folds out to four metres

Part Number	Dimensions (metres)	
	Length	Width
461934	150	4

SR 1097 Masking Bags Blue Low-Density Polythene

new



- Mask awkward shapes
- Elasticated bottom to hold bag onto application
- Softening point +90°C, for use up to +100°C
- Bags with higher temperature resistance also available; please contact our sales office for more details

Part Number	Dimensions (mm)		Std Pack Qty
	Length	Width	
461929	300	150	200
461930	300	250	150
461931	600	450	75
461932	900	600	25



Please call our sales office for a no-obligation competitive quote

Material Temperatures

The temperature resistance of each material is offered as a guide only and will vary depending on the application and the period of exposure to temperature. Please request a free sample to evaluate the suitability of a product for your particular application.