



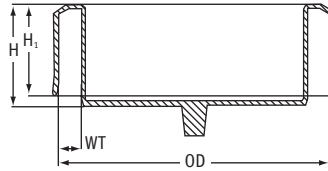
Standard Pipe Caps and Bevel Edge Protection

SR 1370

Heavy-Duty Recessed Caps

Black LDPE

- Protect pipe bevels and internal walls from corrosion and damage
- Accept crane hooks for moving pipes during storage, transit and laying
- Resistant to temperatures from -30°C to +60°C
- Available with or without vent hole



Part Number No Vent Hole	Part Number Vent Hole	To Fit Pipe Specification			Dimensions (mm)			Std Pack Qty
		DIN	Nominal Diameter	OD	WT	H	H ₁	
110423	110439	DN 150	6"	168.3	15.0	100.0	90.0	450
110424	110440	DN 150	6"	168.3	23.0	100.0	90.0	450
110425	110441	DN 200	8"	219.1	15.0	100.0	90.0	250
110426	110442	DN 200	8"	219.1	23.0	100.0	90.0	250
110427	110443	DN 250	10"	273.0	15.0	100.0	90.0	160
110428	110444	DN 250	10"	273.0	23.0	100.0	90.0	160
110429	110445	DN 250	10"	273.0	32.0	100.0	90.0	160
110430	110446	DN 300	12"	323.9	15.0	100.0	90.0	80
110431	110447	DN 300	12"	323.9	23.0	100.0	90.0	115
110432	110448	DN 300	12"	323.9	32.0	100.0	90.0	115
110433	110449	DN 350	14"	355.6	23.0	100.0	90.0	95
110434	110450	DN 350	14"	355.6	32.0	100.0	90.0	95
110435	110451	DN 400	16"	406.4	23.0	100.0	90.0	75
110436	110452	DN 400	16"	406.4	32.0	100.0	90.0	75
110437	110453	DN 500	20"	508.0	23.0	100.0	90.0	36
110438	110454	DN 500	20"	508.0	32.0	100.0	90.0	36

Also available in medium-density polyethylene in sizes up to 40"; please contact our sales office for more details.

SR 1375

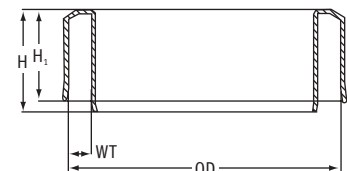
Quick-Fit Bevel Edge Protectors

Black LDPE

- Accept crane hooks for moving pipes during storage, transit and laying
- Resistant to temperatures from -30°C to +60°C



Part Number No Vent Hole	Nominal Diameter	Dimensions (mm)				Std Pack Qty
		OD	WT	H	H ₁	
110455	6"	168.30	15.0	100.00	90.00	450
110456	6"	168.30	23.0	100.00	90.00	450
110457	8"	219.10	15.0	100.00	90.00	250
110458	8"	219.10	23.0	100.00	90.00	250
110459	10"	273.00	15.0	100.00	90.00	160
110460	10"	273.00	23.0	100.00	90.00	160
110461	10"	273.00	32.0	100.00	90.00	160
110462	12"	323.90	15.0	100.00	90.00	115
110463	12"	323.90	23.0	100.00	90.00	115
110464	12"	323.90	32.0	100.00	90.00	115
110465	14"	355.60	23.0	100.00	90.00	95
110466	14"	355.60	32.0	100.00	90.00	95
110467	16"	406.40	23.0	100.00	90.00	75
110468	16"	406.40	32.0	100.00	90.00	75
110469	20"	508.00	23.0	100.00	90.00	36
110470	20"	508.00	32.0	100.00	90.00	36





Standard Pipe Caps and Bevel Edge Protection

SR 1360

Bevel Edge Protectors and Plugs

Bevel Edge Protector – Steel
Bevel Pipe Plug – PE/Flexible PE



- Bevel edge protector designed for use with metal pipes from 10" to 64" (see chart below for applicable pipe sizes)
- Protector is simple to fit by inserting into the pipe bore and hammering the locking loop into place, which expands the protector to give a tight fit
- Available with special bevel pipe plug in sizes 16" to 54" for complete protection
- Pipe plug has depth of 100mm to accept crane hook
- To fit the pipe plug in conjunction with the bevel protector, the protector should be placed over the plug. When the curve of the bevel protector is flattened, the pipe plug will expand and force itself against the inside of the pipe

For details of the part numbers to suit pipe wall thickness, please contact our sales office

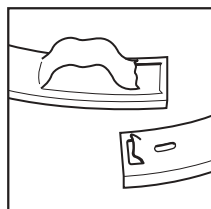


Figure 1

Bring the two ends together. The small teeth of the closing curve catch the lip on the other end of the metal ring.

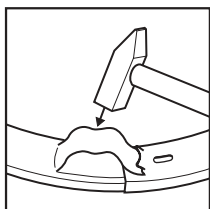


Figure 2

Give a few taps with a hammer on top of the closing curve. The bevel protector expands and clamps itself on the inside of the pipe.

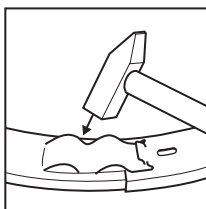


Figure 3

Tension arises when the closing clip is hammered into two small curves. This encloses the protector, which is firmly fixed to the pipe.

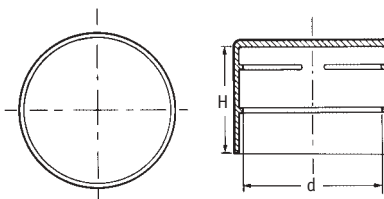
Nominal Diameter (ins)	Outside Pipe Diameter (mm)	Nominal Diameter (ins)	Outside Pipe Diameter (mm)
10	273.1	38	965.2
12	323.9	40	1016.0
14	355.6	42	1066.8
16	406.4	44	1117.6
18	457.2	46	1168.4
20	508.0	48	1219.2
22	558.8	50	1270.0
24	609.6	52	1320.8
26	660.4	54	1371.6
28	711.2	56	1422.4
30	762.0	58	1473.2
32	812.8	60	1524.0
34	863.6	62	1574.8
36	914.4	64	1625.6

SR 1358/1352

Standard Pipe Caps

Yellow LDPE

- Low cost and high quality
- Internal ribs ensure tight fit and release pressure build-up



Part Number No Vent Hole	Part Number Vent Hole	Nominal Pipe Size	Dimensions (mm) d	H
10286	43558	DN 15 ½"	21.3	20.0
10287	43559	DN 20 ¾"	26.9	25.0
10288	43560	DN 25 1"	33.7	30.0
10294	10268	DN 32 1¼"	42.4	28.0
10295	10269	DN 40 1½"	48.3	30.0
10296	10267	DN 50 2"	60.3	30.0
10298	10266	DN 65 2½"	76.1	35.0
199480	199481	DN 80 3"	88.9	36.0
199482	199483	DN 90 3½"	101.6	40.0
199484	199485	DN 100 4"	114.3	40.0
199486	199487	DN 115 4½"	127.0	40.0
199488	199489	DN 125 5"	139.7	40.0
199490	199491	DN 140 5½"	152.4	40.0
199492	199493	DN 150 6"	168.3	40.0
199494	199495	DN 200 8"	219.1	40.0
199496	199497	DN 250 10"	273.0	45.0
199498	199499	DN 300 12"	323.9	50.0
43970	43454	DN 350 14"	355.6	57.0
43971	43455	DN 400 16"	406.4	62.0
43972	43456	DN 450 18"	457.2	62.0
43973	43457	DN 500 20"	508.0	67.0
31710	42019	DN 550 22"	558.8	115.0
43974	43458	DN 600 24"	609.6	67.0
31713	42005	DN 650 26"	660.4	135.0
110284	110300	DN 700 28"	711.2	120.0
110285	110303	DN 750 30"	762.0	120.0
110286	110306	DN 800 32"	812.8	120.0
34240	42009	DN 850 34"	863.6	170.0
110287	110309	DN 900 36"	914.4	150.0
34244	42011	DN 950 38"	965.2	180.0
31727	42012	DN 1000 40"	1016.0	180.0
31731	42013	DN 1050 42"	1066.8	185.0
34248	42014	DN 1100 44"	1117.8	185.0
31725	42015	DN 1200 48"	1219.2	200.0
34252	42016	DN 1400 56"	1422.4	215.0
34254	42017	DN 1500 60"	1524.0	220.0
34256	42018	DN 1600 64"	1625.6	230.0

Maximum vent hole size is 4mm on 1¼" to 12" pipe caps and as specified for larger sizes.

Nominal diameters above DN 300 – 12" are the exact conversion of the d dimension.

Available in a choice of colours and materials; please contact our sales office for more details.

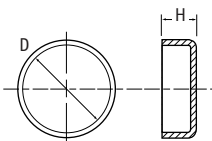
See overleaf for Non-Standard Pipe Caps 160



Non-Standard Pipe Caps

Non-Standard Pipe Caps

- Wide range – 8mm to 1642mm diameter
- Meet ANSI and DIN specification
- Optional vent holes above 90mm diameter
- Contact our sales office for stock availability



extended range

Part Number	Nominal Diameter	Dimensions (mm)		Colour/Material	Cap Style
		D	H		
34097	-	8.0	13.0	Grey PE	Ribbed
34098	-	10.0	13.0	Grey PE	Ribbed
12773	1/8"	10.2	16.0	Red PE	Ribbed
34099	-	12.0	13.0	Grey PE	Ribbed
12774	-	12.0	16.0	Red PE	Ribbed
462573	-	12.7	15.0	Black PE	Ribbed
34100	-	13.0	13.0	Grey PE	Ribbed
34101	1/8"	13.7	13.0	Grey PE	Ribbed
34102	-	14.0	13.0	Grey PE	Ribbed
34103	-	15.0	13.0	Grey PE	Ribbed
12775	-	15.0	20.0	Red PE	Ribbed
34104	-	16.0	13.0	Grey PE	Ribbed
12776	-	16.0	20.0	Red PE	Ribbed
34105	3/8"	17.2	13.0	Grey PE	Ribbed
34106	-	18.0	13.0	Grey PE	Ribbed
12849	-	18.0	20.0	Red PE	Ribbed
12080	-	19.0	12.7	Yellow PE	Heavy Duty
34107	-	19.0	13.0	Grey PE	Ribbed
34108	-	20.0	20.0	Grey PE	Ribbed
12777	-	20.0	20.0	Red PE	Ribbed
11993	1/2"	21.4	17.2	Black PE	Heavy Duty
12081	1/2"	21.4	17.2	Yellow PE	Heavy Duty
34110	-	22.0	20.0	Grey PE	Ribbed
12850	-	22.0	20.0	Red PE	Ribbed
12082	-	22.2	17.7	Yellow PE	Heavy Duty
12083	-	23.8	20.3	Yellow PE	Heavy Duty
34111	-	24.0	20.0	Grey PE	Ribbed
34112	-	25.0	20.0	Grey PE	Ribbed
12779	-	25.0	20.0	Red PE	Ribbed
12084	-	25.4	22.0	Yellow PE	Heavy Duty
34113	-	26.0	20.0	Grey PE	Ribbed
12085	3/4"	27.0	25.4	Yellow PE	Heavy Duty
50248	3/4"	27.0	25.4	Black PE	Heavy Duty
34115	-	28.0	20.0	Grey PE	Ribbed
12780	-	28.0	27.0	Red PE	Ribbed
12846	-	30.0	26.5	Red PE	Ribbed
34116	-	30.0	30.0	Grey PE	Ribbed
10275	-	31.8	25.4	Yellow PE	Heavy Duty
12956	-	32.0	26.8	Yellow PE	Ribbed
34118	-	32.0	30.0	Grey PE	Ribbed
10677	1"	33.4	24.8	Yellow PE	Heavy Duty
12086	-	34.1	22.8	Yellow PE	Heavy Duty
11356	-	35.0	24.6	Yellow PE	Heavy Duty
12781	-	35.0	27.0	Red PE	Ribbed
462574	-	35.0	28.0	Black PE	Ribbed
34120	-	35.0	30.0	Grey PE	Ribbed
12782	-	38.0	27.0	Red PE	Ribbed
10989	-	38.0	28.4	Yellow PE	Heavy Duty
34121	-	38.0	30.0	Grey PE	Ribbed
34122	-	38.0	85.0	Yellow PE	Flexible
462575	-	38.1	28.0	Black PE	Ribbed
12616	-	39.3	25.0	Yellow PE	Lightweight
34123	-	40.0	30.0	Grey PE	Ribbed
12957	-	40.0	26.7	Yellow PE	Ribbed
11118	-	41.3	26.6	Yellow PE	Heavy Duty
51061	-	41.3	26.6	Black PE	Heavy Duty
12783	-	41.5	27.0	Red PE	Ribbed
34124	-	41.5	30.0	Grey PE	Ribbed
12087	1 1/4"	42.9	25.4	Yellow PE	Heavy Duty
60606	1 1/4"	42.9	25.4	Black PE	Heavy Duty
12587	1 1/4"	43.0	25.0	Yellow PE	Lightweight
11236	-	44.5	26.6	Yellow PE	Heavy Duty
34126	-	44.5	30.0	Grey PE	Ribbed
11360	-	47.7	28.4	Yellow PE	Heavy Duty
11238	1 1/2"	48.3	27.0	Yellow PE	Heavy Duty
51200	1 1/2"	48.3	27.0	Black PE	Heavy Duty
34128	-	50.0	30.0	Grey PE	Ribbed

Part Number	Nominal Diameter	Dimensions (mm)		Colour/Material	Cap Style
		D	H		
10146	-	50.8	24.3	Yellow PE	Heavy Duty
462576	-	50.8	29.0	Black PE	Ribbed
34129	-	50.8	90.0	Yellow PE	Flexible
34130	-	51.0	30.0	Grey PE	Ribbed
34131	-	52.0	30.0	Grey PE	Ribbed
12982	-	54.0	27.8	Red PE	Ribbed
10834	1 3/4"	54.0	28.4	Yellow PE	Heavy Duty
34132	1 3/4"	54.0	30.0	Grey PE	Ribbed
462577	-	54.0	36.0	Black PE	Ribbed
34134	-	57.0	30.0	Grey PE	Ribbed
31143	-	55.7	45.0	Yellow PE	Flexible
11217	-	57.2	25.4	Yellow PE	Heavy Duty
34135	-	59.0	30.0	Grey PE	Ribbed
41113	-	60.0	50.0	Yellow PE	Flexible
10195	2"	60.3	26.6	Yellow PE	Heavy Duty
51109	2"	60.3	26.6	Black PE	Heavy Duty
34137	2"	60.3	60.0	Yellow PE	Flexible
41122	-	61.0	75.0	Yellow PE	Flexible
12958	-	63.0	35.0	Yellow PE	Ribbed
12617	-	63.5	29.0	Yellow PE	Lightweight
34138	-	63.5	30.0	Grey PE	Ribbed
10648	-	63.5	30.4	Yellow PE	Heavy Duty
462578	-	63.5	33.0	Yellow PE	Ribbed
34139	-	66.5	30.0	Grey PE	Ribbed
34140	-	69.0	36.0	Yellow PE	Flexible
34141	-	70.0	30.0	Grey PE	Ribbed
11337	-	70.0	30.0	Yellow PE	Heavy Duty
34142	-	73.0	30.0	Grey PE	Ribbed
34143	-	75.0	30.0	Grey PE	Ribbed
12618	-	75.0	31.0	Yellow PE	Lightweight
462579	-	75.0	38.0	Black PE	Ribbed
48211	-	75.0	92.0	Yellow PE	Flexible
11198	2 1/2"	76.1	31.0	Yellow PE	Heavy Duty
86470	2 1/2"	76.1	31.0	Black PE	Heavy Duty
34145	-	77.0	30.0	Grey PE	Ribbed
462580	-	77.0	32.0	Black PE	Ribbed
462581	-	78.0	32.0	Black PE	Ribbed
462582	-	79.4	28.0	Black PE	Ribbed
462583	-	80.5	28.0	Black PE	Ribbed
34146	-	82.0	30.0	Grey PE	Ribbed
11408	-	82.5	31.0	Yellow PE	Heavy Duty
34148	-	82.5	40.0	Yellow PE	Flexible
34149	-	83.0	30.0	Grey PE	Ribbed
34150	-	85.0	40.0	Grey PE	Ribbed
34151	-	86.0	43.0	Yellow PE	Flexible
48212	-	86.0	60.0	Yellow PE	Flexible
34152	3"	89.0	40.0	Grey PE	Ribbed
34153	-	90.0	40.0	Grey PE	Ribbed
12959	-	92.0	34.5	Yellow PE	Ribbed
34154	-	92.0	43.0	Yellow PE	Flexible
462584	-	92.4	32.0	Yellow PE	Ribbed
10076	-	94.0	40.0	Red PE	Ribbed
34155	-	95.0	40.0	Grey PE	Ribbed
12633	-	95.5	33.0	Yellow PE	Lightweight
462585	-	96.5	39.0	Red PE	Ribbed
34156	-	97.0	43.0	Yellow PE	Flexible
34157	-	97.0	60.0	Yellow PE	Flexible
34158	-	100.0	46.0	Yellow PE	Flexible
34159	-	100.0	65.0	Yellow PE	Flexible
462586	-	100.3	40.0	Red PE	Ribbed
32709	3 1/2"	101.6	100.0	Yellow PE	Flexible
34161	-	103.0	43.0	Yellow PE	Flexible
34162	-	104.0	40.0	Grey PE	Ribbed
34163	-	105.0	43.0	Yellow PE	Flexible
34164	-	107.7	45.0	Yellow PE	Flexible
34165	-	108.0	40.0	Grey PE	Ribbed
12960	-	110.0	34.6	Yellow PE	Ribbed
462587	-	110.0	39.0	Green PE	Ribbed
34166	-	110.0	40.0	Grey PE	Ribbed
34167	-	111.0	40.0	Grey PE	Ribbed
34169	4"	114.3	50.0	Yellow PE	Flexible
199484	4"	115.0	35.0	Yellow PE	Lightweight
31705	-	116.3	40.0	Grey PE	Ribbed
41102	-	117.9	50.0	Yellow PE	Flexible
34170	-	120.9	45.0	Yellow PE	Flexible
34171	-	122.0	45.0	Yellow PE	Flexible
12619	-	125.0	35.0	Yellow PE	Lightweight
12961	-	125.0	34.1	Yellow PE	Ribbed

CONTINUED ON NEXT PAGE



Non-Standard Pipe Caps *CONTINUED*

Part Number	Nominal Diameter	Dimensions (mm)		Colour/Material	Cap Style
		D	H		
34172	—	125.0	40.0	Grey PE	Ribbed
34173	4½"	127.0	45.0	Yellow PE	Flexible
32711	4½"	127.0	100.0	Yellow PE	Flexible
31641	—	128.5	90.0	Yellow PE	Flexible
31702	—	133.0	40.0	Grey PE	Ribbed
462588	—	133.0	45.0	Natural PE	Ribbed
34174	—	136.0	47.0	Yellow PE	Flexible
12620	—	137.0	35.0	Yellow PE	Lightweight
12907	—	139.7	33.0	Yellow PE	Lightweight
34175	—	139.7	65.0	Yellow PE	Flexible
31635	5"	141.3	40.0	Grey PE	Ribbed
32712	5"	141.3	100.0	Yellow PE	Flexible
34835	—	148.0	50.0	Yellow PE	Flexible
37010	—	149.2	8.0	Yellow PE	Flexible
34176	—	151.0	40.0	Grey PE	Ribbed
34177	5½"	152.4	47.0	Yellow PE	Flexible
32713	5½"	152.4	100.0	Yellow PE	Flexible
32714	—	155.8	100.0	Yellow PE	Flexible
31712	—	159.0	40.0	Grey PE	Ribbed
32790	—	159.0	100.0	Yellow PE	Flexible
31715	—	160.0	40.0	Grey PE	Ribbed
34178	—	160.0	47.0	Yellow PE	Flexible
39565	—	165.1	40.0	Yellow PE	Flexible
34179	6"	168.3	50.0	Yellow PE	Flexible
34803	6"	168.3	100.0	Yellow PE	Flexible
34180	—	171.0	50.0	Yellow PE	Flexible
35282	—	171.0	100.0	Yellow PE	Flexible
34839	—	176.8	74.0	Yellow PE	Flexible
31638	—	177.8	40.0	Grey PE	Ribbed
34181	—	177.8	65.0	Yellow PE	Flexible
34182	—	180.0	50.0	Yellow PE	Flexible
41057	—	180.0	100.0	Yellow PE	Flexible
31717	—	185.0	40.0	Grey PE	Ribbed
34804	—	185.0	100.0	Yellow PE	Flexible
31707	—	193.7	40.0	Grey PE	Ribbed
34805	—	193.7	100.0	Yellow PE	Flexible
34183	—	200.0	40.0	Grey PE	Ribbed
31704	—	200.0	50.0	Yellow PE	Flexible
34806	—	200.0	100.0	Yellow PE	Flexible
34184	—	203.0	120.0	Yellow PE	Flexible
34185	—	210.0	40.0	Grey PE	Ribbed
31781	—	210.0	50.0	Yellow PE	Flexible
34807	—	210.0	100.0	Yellow PE	Flexible
34841	—	212.0	78.0	Yellow PE	Flexible
31785	8½"	216.0	50.0	Yellow PE	Flexible
41017	—	217.1	65.0	Yellow PE	Flexible
31639	8"	219.1	50.0	Grey PE	Ribbed
31733	8"	219.1	55.0	Yellow PE	Flexible
34808	8"	219.1	100.0	Yellow PE	Flexible
34809	8"	219.1	120.0	Yellow PE	Flexible
34186	—	225.0	55.0	Yellow PE	Flexible
34842	—	230.0	55.0	Yellow PE	Flexible
39162	—	232.0	55.0	Yellow PE	Flexible
34187	—	235.0	55.0	Yellow PE	Flexible
34817	—	236.0	100.0	Yellow PE	Flexible
34188	9½"	242.0	50.0	Grey PE	Ribbed
462589	—	243.0	50.0	Grey PE	Ribbed
31746	—	244.5	55.0	Yellow PE	Flexible
34189	—	250.0	60.0	Yellow PE	Flexible
41082	—	260.0	60.0	Yellow PE	Flexible
34190	—	264.0	60.0	Yellow PE	Flexible
39189	—	264.0	100.0	Yellow PE	Flexible
34191	10½"	267.0	60.0	Yellow PE	Flexible
31640	10"	273.0	50.0	Grey PE	Ribbed
31735	10"	273.0	65.0	Yellow PE	Flexible
34810	10"	273.0	100.0	Yellow PE	Flexible
31724	10"	273.0	115.0	Yellow PE	Flexible
34192	—	281.0	65.0	Yellow PE	Flexible
34193	11¼"	285.0	65.0	Yellow PE	Flexible
34812	—	286.0	100.0	Yellow PE	Flexible
34194	11½"	293.0	80.0	Yellow PE	Flexible
34818	—	298.0	80.0	Yellow PE	Flexible
34195	—	300.0	65.0	Yellow PE	Flexible
34196	12"	305.0	80.0	Yellow PE	Flexible
34197	12¼"	311.0	70.0	Yellow PE	Flexible
34198	—	315.0	70.0	Yellow PE	Flexible
34199	12½"	317.0	80.0	Yellow PE	Flexible

Part Number	Nominal Diameter	Dimensions (mm)		Colour/Material	Cap Style
		D	H		
31789	12½"	318.0	70.0	Yellow PE	Flexible
31694	12"	323.8	75.0	Yellow PE	Flexible
34814	12"	323.8	100.0	Yellow PE	Flexible
34200	13"	330.0	75.0	Yellow PE	Flexible
34201	—	334.0	75.0	Yellow PE	Flexible
48213	—	335.0	100.0	Yellow PE	Flexible
34202	—	338.0	75.0	Yellow PE	Flexible
34203	13½"	343.0	75.0	Yellow PE	Flexible
34204	—	350.0	80.0	Yellow PE	Flexible
31726	—	355.6	30.0	Yellow PE	Flexible
31685	14"	355.6	80.0	Yellow PE	Flexible
34815	14"	355.6	100.0	Yellow PE	Flexible
34816	—	360.0	100.0	Yellow PE	Flexible
31709	14½"	368.0	80.0	Yellow PE	Flexible
34205	—	368.0	160.0	Yellow PE	Flexible
31642	—	378.0	185.0	Yellow PE	Flexible
34206	15"	381.0	80.0	Yellow PE	Flexible
34207	15¼"	388.0	80.0	Yellow PE	Flexible
34208	15½"	394.0	80.0	Yellow PE	Flexible
34209	—	400.0	75.0	Yellow PE	Flexible
41021	—	404.1	103.0	Yellow PE	Flexible
34819	16"	406.4	120.0	Yellow PE	Flexible
34820	—	410.0	120.0	Yellow PE	Flexible
31706	16½"	419.0	90.0	Yellow PE	Flexible
36407	—	432.0	80.0	Yellow PE	Flexible
31730	—	433.0	80.0	Yellow PE	Flexible
34210	17½"	445.0	90.0	Yellow PE	Flexible
34211	17¾"	455.0	80.0	Yellow PE	Flexible
34212	—	463.0	75.0	Yellow PE	Flexible
34213	18½"	470.0	80.0	Yellow PE	Flexible
34214	19"	482.0	80.0	Yellow PE	Flexible
34215	—	490.0	95.0	Yellow PE	Flexible
34216	19½"	495.0	100.0	Yellow PE	Flexible
34217	—	514.0	80.0	Yellow PE	Flexible
31708	20½"	521.0	110.0	Yellow PE	Flexible
34218	21"	532.0	80.0	Yellow PE	Flexible
34219	21"	534.0	80.0	Yellow PE	Flexible
34220	—	564.0	85.0	Yellow PE	Flexible
34221	22½"	574.0	80.0	Yellow PE	Flexible
34222	23"	585.0	120.0	Yellow PE	Flexible
31729	—	586.0	90.0	Yellow PE	Flexible
34223	23¾"	597.0	115.0	Yellow PE	Flexible
34224	—	616.0	95.0	Yellow PE	Flexible
31711	24½"	622.0	130.0	Yellow PE	Flexible
34225	25"	635.0	130.0	Yellow PE	Flexible
34226	25½"	648.0	80.0	Yellow PE	Flexible
34227	26¼"	667.0	100.0	Yellow PE	Flexible
34228	26½"	673.0	135.0	Yellow PE	Flexible
34229	27"	686.0	135.0	Yellow PE	Flexible
34230	28"	711.2	260.0	Yellow PE	Flexible
34231	—	719.0	105.0	Yellow PE	Flexible
31690	—	730.0	145.0	Yellow PE	Flexible
34232	29"	736.6	145.0	Yellow PE	Flexible
34233	—	746.0	150.0	Yellow PE	Flexible
34234	—	770.0	115.0	Yellow PE	Flexible
34235	—	793.0	80.0	Yellow PE	Flexible
34236	—	800.0	155.0	Yellow PE	Flexible
34237	32¼"	820.0	120.0	Yellow PE	Flexible
34238	32½"	825.0	165.0	Yellow PE	Flexible
34239	33¼"	851.0	80.0	Yellow PE	Flexible
34241	—	872.0	125.0	Yellow PE	Flexible
31728	—	890.0	170.0	Yellow PE	Flexible
34242	35½"	902.0	175.0	Yellow PE	Flexible
34243	36¼"	921.0	135.0	Yellow PE	Flexible
34245	—	975.0	140.0	Yellow PE	Flexible
41071	—	1000.0	180.0	Yellow PE	Flexible
34246	—	1026.0	145.0	Yellow PE	Flexible
34247	—	1078.0	150.0	Yellow PE	Flexible
34249	—	1129.0	160.0	Yellow PE	Flexible
31725	48"	1219.2	200.0	Yellow PE	Flexible
34250	—	1231.0	170.0	Yellow PE	Flexible
34251	—	1340.0	180.0	Yellow PE	Flexible
39127	—	1371.6	180.0	Yellow PE	Flexible
34253	—	1437.0	180.0	Yellow PE	Flexible
41064	—	1464.5	180.0	Yellow PE	Flexible
34255	—	1539.0	180.0	Yellow PE	Flexible
34257	—	1642.0	180.0	Yellow PE	Flexible



All-Round Flange Covers

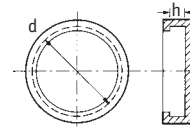
SR 1353

Flange Covers

Yellow Flexible Polyethylene

- Ideal for protecting internally-coated flanges
- Provide complete all-round flange protection
- Cover ANSI B 16.5, DIN 2631-2635 and BS4504

- Easy to fit
- Durable and flexible
- Also protect bolt holes
- Suit all types of flange faces
- Other sizes available



DIN

Part Number	Nominal Diameter	Series Pressure Group (Bar)	Dimensions (mm)	
			d	h
34278	DN 10	6	75.0	10.0
110317	-	10, 16	90.0	12.0
34281	-	25, 40	90.0	14.0
34279	DN 15	6	80.0	10.0
34282	-	10, 16	95.0	12.0
110318	-	25, 40	95.2	14.2
110317	DN 20	6	90.0	12.0
31996	-	10, 16	105.0	14.0
32259	-	25, 40	105.0	16.0
110319	DN 25	6	100.2	12.2
31967	-	10, 16	115.0	14.0
32260	-	25, 40	115.0	16.0
32261	DN 32	6	120.0	12.0
31968	-	10, 16	140.0	14.0
32264	-	25, 40	140.0	16.0
32262	DN 40	6	130.0	11.0
32265	-	10, 16	150.0	13.0
110322	-	25, 40	150.5	15.0
32263	DN 50	6	140.0	11.0
32267	-	10, 16	165.0	15.0
31970	-	25, 40	165.0	17.0
32266	DN 65	6	160.0	11.0
31971	-	10, 16	185.0	15.0
32268	-	25, 40	185.0	19.0
32269	DN 80	6	190.0	13.0
31972	-	10, 16	200.0	17.0
32270	-	25, 40	200.0	21.0
32271	DN 100	6	210.0	13.0
31973	-	10, 16	220.0	17.0
32272	-	25, 40	235.0	21.0
32273	DN 125	6	240.0	15.0
31921	-	10, 16	250.0	19.0
32275	-	25, 40	270.0	23.0
32274	DN 150	6	265.0	15.0
31915	-	10, 16	285.0	19.0
34283	-	25, 40	300.0	25.0
31916	DN 200	6	320.0	17.0
32310	-	10, 16	340.0	21.0
34286	-	25	360.0	27.0
34288	-	40	375.0	31.0
34287	DN 250	6	375.0	19.0
34289	-	10	395.0	23.0
32311	-	16	405.0	23.0
34290	-	25	425.0	29.0
34292	-	40	450.0	35.0
34291	DN 300	6	440.0	18.0
31922	-	10	445.0	22.0
32312	-	16	460.0	24.0
31874	-	25	485.0	30.0
34295	-	40	515.0	38.0
34294	DN 350	6	490.0	18.0
32320	-	10	505.0	22.0
34296	-	16	520.0	26.0
34298	-	25	555.0	34.0
34297	DN 400	6	540.0	18.0
32321	-	10	565.0	22.0
34299	-	16	580.0	28.0
32276	-	25	620.0	36.0
32278	-	40	660.0	46.0
32322	DN 500	10	670.0	24.0
32281	-	16	715.0	30.0
32282	-	25	730.0	40.0
31942	-	40	755.0	48.0

ANSI

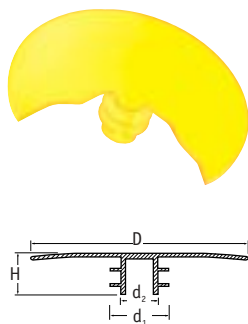
Part Number	Nominal Diameter	Series Pressure Group (lbs)	Dimensions (mm)	
			d	h
31836	1/2"	150	88.9	11.2
110318	-	300/400/600	95.2	14.2
110319	3/4"	150	100.2	12.2
34258	-	900/1500	120.6	22.3
31965	-	300/400/600	117.3	15.7
31896	-	900/1500	130.0	25.4
110320	1"	150	108.0	14.2
31938	-	300/400/600	124.0	17.5
31891	-	900/1500	149.3	28.4
31965	1 1/4"	150	117.3	15.7
34260	-	300/400/600	133.4	19.0
110321	1 1/2"	150	127.0	17.5
31886	-	300	155.4	20.6
32284	-	400/600	155.4	22.4
31892	-	900/1500	177.8	31.7
110323	2"	150	152.4	19.1
110324	-	300	165.5	22.5
32285	-	400/600	165.1	25.4
32293	-	900/1500	215.9	38.1
32313	2 1/2"	150	177.8	22.4
31888	-	300	190.5	25.4
31890	-	400/600	190.5	28.4
31766	3"	150	190.5	23.9
31867	-	300	209.5	28.4
32286	-	400/600	209.5	31.8
32294	-	900	241.3	38.1
34262	3 1/2"	150	215.9	23.9
34263	-	300	228.6	30.2
34264	-	400/600	228.6	35.1
31763	4"	150	228.6	23.9
31868	-	300	254.0	31.7
32287	-	600	273.1	38.1
34265	5"	150	254.0	23.9
34266	-	300	279.4	35.0
34267	-	600	330.2	44.5
31760	6"	150	279.4	25.4
31869	-	300	317.5	36.5
32296	-	600	355.6	47.8
31870	8"	150	342.9	28.4
31871	-	300	381.0	41.1
32298	-	600	419.1	55.6
31872	10"	150	406.4	30.2
31873	-	300	444.5	47.7
32300	-	600	508.0	63.5
31874	12"	150	482.6	31.8
31875	-	300	520.7	50.8
32301	-	600	558.8	66.5
31876	14"	150	533.4	35.1
31847	-	300	584.2	53.8
34268	-	600	603.3	69.9
31877	16"	150	596.9	36.6
31878	-	300	647.7	57.1
34270	-	600	685.8	76.2
31879	18"	150	635.0	39.6
31880	-	300	711.2	60.4
34272	-	600	743.0	82.6
31881	20"	150	698.5	42.9
31882	-	300	774.7	63.5
34274	-	600	812.8	88.9
31942	22"	150	749.3	46.0
31943	24"	150	812.8	47.8
32088	-	300	914.4	69.8
34276	-	600	939.8	101.6



SR 1365 Full-Face Flange Protectors

Yellow LDPE

- Low cost
- Flexible fins ensure snug fit into bores
- For flanges to DN 2627-2638, 150, BS5504 and ANSIB16, 5

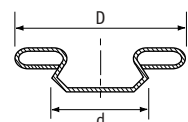


Part Number	DIN	Nominal Bore	Dimensions (mm)				Std Pack Qty
			d ₂	d ₁	D	H	
43975	DN 10	3/8"	7.0	14.1	86.0	15.4	800
43976	DN 15	1/2"	9.1	19.2	90.0	16.1	500
43977	DN 20	3/4"	14.3	24.0	100.0	21.1	1000
43978	DN 25	1"	18.4	29.9	110.0	21.0	1000
43979	DN 32	1 1/4"	22.5	39.1	136.0	20.0	500
43980	DN 40	1 1/2"	30.0	45.0	146.0	21.0	400
43981	DN 50	2"	40.0	56.0	160.0	20.3	350
43982	DN 65	2 1/2"	53.0	72.0	181.0	20.5	250
43983	DN 80	3"	67.0	85.0	195.0	24.7	175
43984	DN 100	4"	90.0	109.25	217.0	23.6	125
43985	DN 125	5"	111.0	134.0	246.0	26.1	80
43986	DN 150	6"	139.5	164.0	280.0	32.2	50
43987	DN 200	8"	187.0	208.6	336.0	33.5	50
43988	DN 250	10"	244.0	266.0	403.0	35.6	15
43989	DN 300	12"	284.0	319.0	450.0	48.5	20

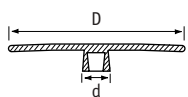
SR 1354 Face Protectors

Yellow Polyethylene

- Protect against dirt, moisture, paint, sand and shot blasting
- Suitable for DIN and ANSI flanges



Type 1



Type 2



Part Number	Type	Nominal Diameter	Dimensions (mm)	
			D	d
31648*	2	DN 15 3/2"	45.0	15.8
31653*	2	DN 20 3/4"	58.0	20.8
34325*	2	DN 25 1"	68.0	26.0
31649*	2	DN 32 1 1/4"	78.0	33.5
34326*	2	DN 40 1 1/2"	88.0	41.5
32440	1	DN 50 2"	102.0	49 – 55
110295*	2	DN 50 2"	103.0	51.0
32441	1	DN 65 2 1/2"	122.0	63 – 70
32442	1	DN 80 3"	138.0	76 – 83
32443	1	DN 100 4"	162.0	100 – 107
34335	1	–	165.0	90 – 100
32444	1	DN 125 5"	188.0	123 – 132
32445	1	DN 150 6"	218.0	149 – 159
34336	1	–	240.0	130 – 140
34337	1	–	245.0	140 – 150
32446	1	DN 200 8"	285.0	196 – 207
34338	1	–	310.0	185 – 200
32447	1	DN 250 10"	345.0	247 – 260
34339	1	–	370.0	220 – 240
32448	1	DN 300 12"	410.0	295 – 310
32449	1	DN 350 14"	465.0	325 – 341
32450	1	DN 400 16"	530.0	374 – 392
32451	1	DN 450 18"	570.0	424 – 443
32452	1	DN 500 20"	625.0	472 – 494
34370	1	DN 600 24"	725.0	570 – 596

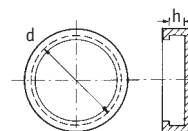
* Material LDPE

Other sizes available; please contact our sales office for more details.

SR 1353 Non-Standard Flange Covers

Yellow Flexible Polyethylene

Part Number	Series	Dimensions (mm)	
		d	h
34300	–	59.0	7.0
34301	–	95.0	16.0
34302	–	105.0	12.0
34303	–	140.0	18.0
34304	–	150.0	17.0
39523	–	180.0	11.0
34305	–	185.0	20.0
34317	–	187.0	37.5
34306	–	200.0	24.0
34307	–	220.0	20/21
34308	–	220.0	24.0
34263	4"	228.6	30.2
34309	–	250.0	22.0
31652	–	250.0	25.0
34319	3" x 1500	270.0	51.5
34310	–	285.0	22/23
34311	–	285.0	24.0
34312	–	285.0	29.0
32291	4" x 900	292.1	44.4
34284	DN 175 – 10, 16	315.0	21.0
34313	–	315.0	24.0
34320	–	316.0	63.0
31917	DN 175 – 25	330.0	25.0
34314	–	340.0	24/25
31651	–	340.0	32.0
34321	8"	343.0	33.0
34285	DN 175 – 40	350.0	29.0
34322	4" x 2500	356.0	76.0
31647	6" x 900	381.0	55.6
34315	–	395.0	28.0
34316	–	445.0	30.0
32299	8" x 900	469.9	63.5
34323	8" x 1500	479.0	93.0
32303	10" x 900	546.1	69.8
34324	8" x 2500	551.0	111.0
32302	12" x 900	609.6	79.2
34269	14" x 900	641.3	85.8
34271	16" x 900	704.8	88.9
34273	18" x 900	787.4	101.6
32307	DN 600 – 16	840.0	31.0
34275	20" x 900	857.2	107.9
34277	24" x 900	1041.4	139.7





Flange Protectors and Flange Discs

SR 1355 Flange Protectors

Black LDPE

- Suitable for ASA/ANSI/BS1560 flanges
- Quick fitting
- Simply insert into bolt holes
- Will not tear or crack
- Weather and petrol resistant



Part Number	Nominal Diameter	Series (lbs)
43607*	1/2"	150
34352	1/2"	300/600
43608*	3/4"	150
34353	3/4"	300/600
43609*	1"	150
34354	1"	300/600
34343	1 1/4"	150
34355	1 1/4"	300/600
43610*	1 1/2"	150
34356	1 1/2"	300/600
43611*	2"	175
39701	2"	300/600
43612*	2 1/2"	150
34358	2 1/2"	300/600
43613*	3"	150
34359	3"	300/600
34348	3 1/2"	150
34360	3 1/2"	300
43614*	4"	150
34361	4"	300
43615*	6"	150
34362	6"	300
43616*	8"	150
43617*	10"	150
43618*	12"	20

* Variations in style – give protection to flange face and area surrounding bolt holes.

SR 1076 SAE High-Pressure Flange Protectors

Polyethylene



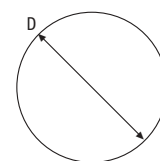
3000 Series – Blue, 6000 Series – Red

Part Number	Nominal Diameter	Series (lbs)
34371	1/2"	3000
34372	3/4"	3000
34382	3/4"	6000
34373	1"	3000
34383	1"	6000
34374	1 1/4"	3000
34384	1 1/4"	6000
34375	1 1/2"	3000
34385	1 1/2"	6000
34376	2"	3000
34386	2"	6000
34377	2 1/2"	3000

SR 1361 Self-Adhesive Flange Discs

Black Rubber

- Provide full flange face protection
- Protect both DIN and ANSI flange specifications
- Ozone and weather resistant
- Withstand temperatures up to +100°C
- Resistant to petrol, oil and non-oxidisation acids
- Available with holes for internal bore sand blasting
- Standard thickness 1.5mm
- Other sizes available; please contact our sales office for more details



ANSI

Part Number	Nominal Diameter	Dimensions (mm) D	Part Number	Nominal Diameter	Dimensions (mm) D
48326	1/2"	36.0	48335	8"	275.0
48327	3/4"	45.0	48336	10"	330.0
48328	1"	54.0	48337	12"	390.0
48329	1 1/2"	75.0	48338	14"	415.0
48330	2"	95.0	48339	16"	475.0
48331	3"	130.0	48340	18"	540.0
48332	4"	160.0	48341	20"	590.0
48333	5"	200.0	48342	24"	700.0
48334	6"	220.0			

All ANSI flange discs suitable for series pressure group (lbs) 150, 300, 400, 600, 900, 1500 and 2500.

DIN

Part Number	Nominal Diameter	Dimensions (mm) D	Series Pressure Group (Bar)
48311	DN 10	40.0	6, 10, 16, 25, 40, 64
48312	DN 15	45.0	6, 10, 16, 25, 40, 64
48313	DN 20	58.0	6, 10, 16, 25, 40, 64
48314	DN 25	68.0	6, 10, 16, 25, 40, 64
48315	DN 32	78.0	6, 10, 16, 25, 40, 64
48316	DN 40	88.0	6, 10, 16, 25, 40, 64
48317	DN 50	102.0	6, 10, 16, 25, 40, 64
48318	DN 65	122.0	6, 10, 16, 25, 40, 64
48319	DN 80	138.0	6, 10, 16, 25, 40, 64
48320	DN 100	158.0	6, 10, 16, 25, 40, 64
48321	DN 125	188.0	6, 10, 16, 25, 40, 64, 100, 160
48322	DN 150	212.0	6, 10, 16, 25, 40, 64, 100, 160
48323	DN 200	268.0	6, 10, 16, 25, 40, 64, 100, 160

For stock availability, please contact our sales office.



Please request a free sample to evaluate the suitability of a product for your application.