

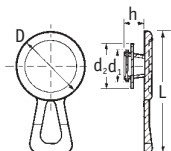


Pull-Tab and Push-Fit Plugs

SR 1055 Ezeplugs

Red LDPE

- Patented design
- Simple push fit
- Fit threaded or plain ports
- Six sizes cover over 29 popular thread sizes
- Strong, flexible pull-tab for quick removal
- Fast fit and removal increases production and reduces costs

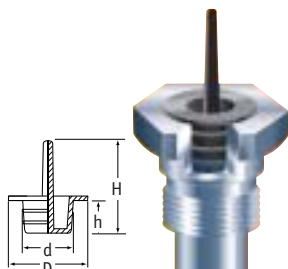


Part Number	To Fit Thread Size			Dimensions (mm)					Std Pack Qty
	UNF	BSP	Metric	h	D	d ₁	d ₂	L	
10093	7/16"	1/8"	M10, M12	9.0	19.0	9.0	13.2	34.0	5000
10094	1/2", 5/8", 3/16"	1/4"	M14, M16	7.0	22.7	9.8	16.5	40.0	5000
10095	3/4"	3/8"	M18, M20	8.0	30.0	13.0	19.5	47.0	4000
10096	7/8"	1/2", 5/8"	M22, M24	9.5	34.3	16.3	23.8	51.4	3000
10778	1 1/16", 1 1/8"	3/4"	M26, M28	9.5	40.0	19.0	27.6	57.0	2000
110001	1 1/4", 1 3/8"	1"	M30, M36	10.0	45.0	29.9	34.5	62.0	2000

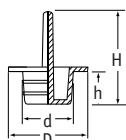
SR 1067 Moss Pull Plugs

Black Thermoplastic Rubber

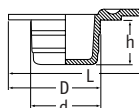
- Protect threaded or plain components
- Handy pull-tab for easy removal
- Acid-resistant
- Withstand temperatures of -40°C to +135°C
- Ideal for hydraulic and general engineering applications



Type 1 – Central Pull



Type 2 – Lateral Pull

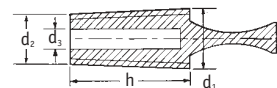


Part Number	Thread Size	Dimensions (mm)					Type	Std Pack Qty
		D	H	d	h	L		
110043	M10	17.5	30.0	9.5	8.0	–	1	8000
110044	M12	19.5	30.0	11.5	10.0	–	1	7000
110045	M14	21.5	30.0	12.8	10.0	–	1	6000
110046	M16	23.5	32.0	15.2	10.0	–	1	4000
110291	M8	15.0	–	7.5	8.0	25.25	2	7000
110280	M10	17.0	–	9.5	8.0	27.25	2	7000
110281	M12	17.0	–	11.5	8.0	28.25	2	7000
110282	M14	21.0	–	13.0	10.0	31.00	2	6000
110283	M16	23.0	–	15.5	10.0	33.25	2	4000
110294	M18	26.0	–	17.0	10.0	35.50	2	4000

SR 1034 Flangeless Plugs

Black PVC

- Tapered shank and hollow core
- Each size fits a range of threads



Part Number	Dimensions (mm)				Std Pack Qty
	d ₁	d ₂	h	d ₃	
10510†	3.2	1.5	15.0	–	10000
10398†	5.0	3.0	15.0	–	10000
18409†*	6.0	4.0	25.0	–	6000
11132	8.0	6.0	25.0	2.5	6000
11133*	10.0	8.0	25.0	4.0	4000
11134*	12.0	10.0	25.0	6.0	4000
11135*	14.0	12.0	25.0	8.0	4000
11136	16.0	14.0	25.0	10.0	4000
11137	18.0	16.0	25.0	12.0	2000

† Thermoplastic rubber.

* Plain shank version available.

Flangeless Plugs are also available in EPDM, Silicone and TPR, for use in high-temperature applications.



See Pages 166, 172 and 176.

Please request a free sample to evaluate the suitability of a product for your application.

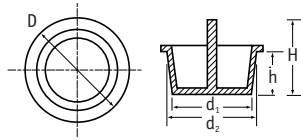


Pull-Tab and Push-Fit Plugs

SR 1068 Centre Pull Plugs

Red LDPE

- Low cost
- Centre pull-tab for easy fit and removal
- Ideal for tight-fitting and awkward locations
- Excellent protection from damage, dirt, moisture and corrosion during production, storage and transportation



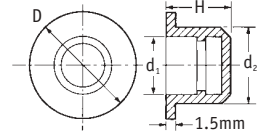
Part Number	To Fit Thread Size			Dimensions (mm)					Std Pack Qty
	Metric	UNF	BSP	d ₁	d ₂	h	H	D	
110029	M8	5/16"	—	6.2	7.7	9.5	20.5	11.1	10000
110030*	M10	7/16"	1/8"	8.4	10.0	9.5	20.5	13.5	10000
110031	—	3/8"	—	9.5	10.8	9.5	20.5	14.0	10000
110032*	M12	1/2"	1/4"	10.9	12.3	9.5	20.3	15.9	10000
110033	M14	9/16"	—	11.7	13.7	11.0	22.0	17.2	5000
110034	M16	5/8"	3/8"	14.2	16.0	11.9	22.9	19.0	5000
110035	M20	3/4"	—	16.4	18.3	12.3	23.5	22.2	5000
110036*	—	13/16"	1/2"	17.8	20.0	13.7	24.5	23.8	5000
110037	M24	7/8"	5/8"	21.3	23.2	15.9	26.9	27.0	3000
10418	—	1"	—	22.5	25.5	17.8	29.0	28.9	2500
110038*	M28, M30	1 1/8"	—	24.7	27.7	19.0	30.0	32.0	2000
110039*	M52	—	—	48.2	52.7	25.4	26.4†	57.1	300
110040*	M58, M60	—	2"	55.0	61.0	25.0	26.0†	65.0	400
110041*	M62	—	—	59.3	67.3	30.7	31.5†	70.6	300
110042	—	—	—	67.4	70.2	25.0	26.0†	74.6	300

* Large flange version available.
† Pull-tab does not extend above overall height.
For further details, please contact our sales office.

SR 1013 Moss Plugs

Black PVC

- Highly resistant to shredding
- Ideal for threaded applications
- Green Vinyl
- Can be used with oils and greases



Part Number	Black PVC	Green Vinyl	Dimensions (mm)			Std Pack Qty
			D	H	d ₁	
10874	10669	7.0	9.0	1.6	3.2	10000
12665	11863	11.0	12.0	3.2	5.0	10000
12666	11806	12.0	12.0	3.1	6.0	10000
12667	11817	13.0	12.0	4.5	7.0	10000
12668	11808	14.0	12.0	4.9	8.0	10000
12669	11829	15.0	12.0	6.1	9.0	10000
12670	11807	16.0	12.0	7.2	10.0	10000
12671	11824	17.0	12.0	8.2	11.0	10000
12672	11809	20.0	12.0	9.2	12.0	8000
12673	11822	21.0	14.0	10.2	13.0	8000
12674	11813	22.0	14.0	11.0	14.0	7000
12675	11830	23.0	14.0	12.2	15.0	6000
12677	11820	24.0	14.0	12.9	16.0	6000
12678	11811	27.0	14.0	14.0	17.0	5000
12679	11827	28.0	14.0	15.0	18.0	4000
12680	11818	29.0	14.0	16.1	19.0	4000
12681	11812	30.0	14.0	17.2	20.0	4000
12683	11823	31.0	14.0	18.3	21.0	3000
12684	11828	32.0	14.0	19.0	22.0	3000
12685	11814	33.0	14.0	20.1	23.0	3000
12686	11810	34.0	16.0	21.6	24.0	2500
12687	11816	35.0	16.0	22.2	25.0	2000
12688	11819	36.0	16.0	23.5	26.0	2000
12689	11821	37.0	16.0	23.6	27.0	2000
12690	11825	38.0	16.0	25.2	28.0	2000
12692	11826	40.0	16.0	27.9	30.0	1000
12693	12078	50.0	22.0	36.4	40.0	700
12694	—	57.0	22.0	43.2	47.0	500

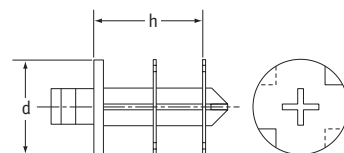
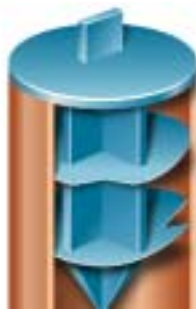
High-temperature versions available in thermoplastic rubber, see page 176

SR 1069 Finned Plugs

Blue LDPE

- Prevent ingress of dirt into tubing
- Quick to fit and remove
- Small unobtrusive pull-tab
- Ideal for use in thin-walled copper tube

new

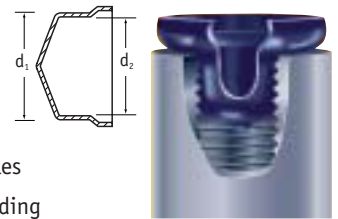


Part Number	Dimensions			Std Pack Qty
	d	d (mm)	h (mm)	
110771	3/8"	9.5	9.5	5000
110772	1/2"	12.7	12.7	5000
110773	5/8"	15.9	15.9	5000
110774	3/4"	19.0	19.0	2500
110775	7/8"	22.2	22.2	2500
110776	1 1/8"	28.6	28.6	2500

SR 1070 Flexiplugs

Black Flexible PVC

- Ideal for threaded and plain holes
- Resistant to splitting and shredding



Part Number	Dimensions (mm)		To Fit Thread Size		Std Pack Qty
	d ₁	d ₂	UNF	Metric	
FPWA-072	7.2	4.4	5/16"	M8	5000
FPWA-091	9.1	6.4	3/8"	M10	5000
FPWA-103	10.3	7.5	7/16"	—	5000
FPWA-118	11.8	9.0	1/2"	M12	5000
FPWA-135	13.5	10.7	9/16"	M14	5000
FPWA-154	15.4	12.6	5/8"	M16	5000
FPWA-191	19.1	16.3	3/4"	M20	2000
FPWA-216	21.6	18.8	7/8"	M24	2500
FPWA-258	25.8	23.0	1 1/16"	M27	2500
FPWA-302	30.2	27.4	1 3/16"	M33	2500

Other colours available; please contact our sales office for more details.

For temperature-resistant PVC version, see page 170

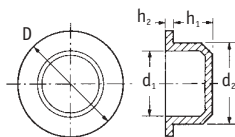


Push-Fit Plugs

SR 1015 Parallel Protection Plugs

Natural LDPE

- Popular general-purpose plug
- Over 50 sizes for a wide range of applications



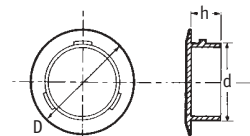
**extended
range**

Part Number	Dimensions (mm)					Std Pack Qty
	D	d ₁	d ₂	h ₁	h ₂	
12150	9.0	3.5	5.0	5.0	1.0	10000
12151	9.5	3.6	5.5	5.0	1.0	10000
12152	10.0	4.5	6.0	5.5	1.0	10000
12153	10.5	5.0	6.5	5.5	1.0	10000
12154	11.0	5.5	7.0	5.5	1.0	10000
12155	11.5	5.6	7.5	5.5	1.0	10000
12156	12.0	6.5	8.0	5.5	1.0	10000
12157	12.5	7.0	8.5	6.0	1.0	10000
12158	13.0	7.5	9.0	6.0	1.0	10000
12159	13.5	8.0	9.5	6.0	1.0	10000
12160	14.0	8.5	10.0	6.5	1.0	10000
12161	14.5	9.0	10.5	6.5	1.0	10000
12162	15.0	9.5	11.0	6.5	1.0	10000
12163	15.5	10.0	11.5	6.5	1.0	10000
12164	15.8	10.5	12.0	6.5	1.0	5000
12165	16.5	11.0	12.5	6.5	1.0	5000
12166	17.0	11.0	13.0	6.5	1.25	5000
12167	17.5	11.5	13.5	6.5	1.25	5000
12168	18.0	12.0	14.0	6.5	1.25	5000
12169	18.5	12.5	14.5	7.0	1.25	5000
12170	19.0	13.0	15.0	7.5	1.25	5000
12171	19.5	13.5	15.5	7.5	1.25	5000
12172	20.0	14.0	16.0	7.5	1.25	5000
12173	20.5	14.5	16.5	7.5	1.25	5000
12174	21.0	15.0	17.0	7.5	1.25	5000
12175	21.5	15.5	17.5	7.5	1.25	5000
12176	22.0	16.0	18.0	8.5	1.25	5000
12177	22.5	16.5	18.5	8.5	1.25	5000
12178	23.0	17.0	19.0	8.5	1.25	5000
12179	23.4	17.5	19.5	8.5	1.25	5000
12180	24.0	18.0	20.0	9.0	1.25	5000
12181	24.5	18.5	20.5	9.0	1.25	5000
12182	25.0	19.0	21.0	9.0	1.25	5000
12183	25.5	19.5	21.5	9.0	1.25	5000
12184	26.0	20.0	22.0	9.0	1.25	5000
12185	26.5	20.0	22.5	9.0	1.5	2500
12186	27.0	20.5	23.0	9.0	1.5	2500
12187	27.5	21.0	23.5	9.0	1.5	2500
12188	28.0	21.5	24.0	9.0	1.5	2500
12189	28.5	22.0	24.5	9.0	1.5	2500
12190	29.0	22.5	25.0	9.0	1.5	2500
12191	30.0	23.5	26.0	10.0	1.5	2000
12192	31.0	24.5	27.0	10.0	1.5	2000
12193	32.0	25.5	28.0	10.0	1.5	2000
12194	33.0	26.5	29.0	10.0	1.5	1500
12195	34.0	27.5	30.0	10.0	1.5	1500
10352	35.5	29.0	31.5	10.0	1.5	1500
462590	37.0	30.5	32.5	11.0	1.0	1500
462591	42.0	37.5	39.5	11.0	1.0	1000
462592	52.0	45.5	47.0	10.0	1.0	1000
462593	54.5	47.0	49.0	11.0	1.0	750
462594	79.0	70.0	72.0	12.0	1.0	750
462595	82.0	76.0	78.0	12.0	1.25	750
462596	90.0	84.0	86.0	10.0	1.25	500

SR 1010 Push-In Plugs

LDPE

- Low cost
- Quick fitting
- Suitable for most applications



Blue UNF/JIC

Part Number	Thread Size	Dimensions (mm)			Std Pack Qty
		D	h	d	
12512	7/16" x 12	15.5	7.0	9.5	10000
12513	1/2" x 20	17.0	7.0	11.0	10000
12514	9/16" x 18	20.5	7.0	12.5	10000
12515	5/8" x 18	23.7	6.5	14.3	10000
12516	3/4" x 16	24.9	8.6	18.8	10000
12517	7/8" x 14	26.6	10.4	20.3	5000
12518	1" x 14	31.0	10.0	23.5	4000
12519	1 1/16" x 12	35.5	10.0	24.8	4000

Red Without Lugs

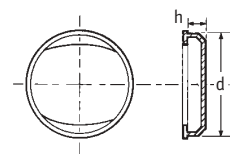
Part Number	Dimensions (mm)			Std Pack Qty
	D	h	d	
12520	16.4	6.3	11.9	5000
12522	23.8	7.0	19.2	5000
12523	30.0	6.1	25.5	2500
12524	35.0	8.0	30.9	2000
12526	51.0	7.5	45.4	1500

Other sizes available; please contact our sales office for more details.

SR 1604 Shallow Plugs

Red LDPE

- Finger grips for easy insertion and removal



Part Number	Dimensions (mm)		Std Pack Qty
	d	h	
10422	30.0	7.8	10000
199104	40.0	10.8	4000
199126	50.0	10.8	2500
199128	60.0	10.7	1750
199175	70.0	10.5	1000
199060	80.0	12.5	800
199152	90.0	12.5	600
199166	100.0	12.5	500
50126	110.0	12.8	350
199508	120.0	12.2	300
50192	125.0	13.0	300
50194	135.0	13.3	200

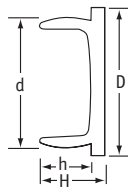
Available without finger grips for postal tubes, see page



SR 1011 Barrel Plugs

Natural LDPE

- General-purpose plug for a wide range of applications
- Quick to fit and remove
- Convexed sides to ensure secure fit



extended range

Part Number	To Fit Thread Size	Dimensions (mm)				Std Pack Qty
		d	D	h	H	
10876*	–	5.4	12.0	7.5	9.5	10000
12135	M8 x 1	7.3	14.0	6.0	8.0	10000
12136	–	8.4	14.0	6.0	8.0	10000
10905	M10	9.3	14.0	4.5	6.5	6000
12978	7/8" BSP	9.3	16.0	6.8	8.3	6000
12977	M12 x 1.5	10.7	14.0	5.5	7.5	6000
110478	M14	11.9	16.0	7.0	9.0	5000
10906	–	12.3	16.0	7.0	9.0	5000
12979	M14 x 1.5	12.8	20.0	7.8	10.3	5000
12787	–	13.7	20.0	8.0	10.0	5000
12089	–	14.5	20.0	5.5	7.5	5000
12789	–	15.6	20.0	8.0	10.0	5000
12790	–	17.0	22.0	8.2	10.8	5000
12791	–	18.4	25.0	8.0	10.5	5000
12792	1/2" BSP	19.3	25.0	8.0	10.5	5000
12980	M22 x 1.5	20.5	30.0	10.7	13.2	3000
12793	5/8" BSP	21.2	25.0	7.5	9.5	5000
12794	–	21.7	25.0	8.0	10.5	4000
12796	M24 x 2	22.4	28.0	9.0	12.0	4000
12797	–	23.4	28.0	3.0	12.0	4000
12799	3/4" BSP	24.6	28.0	9.0	12.0	3000
12800	M27 x 1.5	25.5	28.0	7.5	9.5	3000
12801	M28 x 1.5	26.5	28.0	9.0	12.0	4000
12802	–	29.0	36.0	12.0	15.0	3000
12803	7/8" BSP	30.5	36.0	12.0	15.0	2500
12804	M33 x 1.5, 1" BSP	31.8	36.0	10.0	12.5	2000
12805	M35 x 1.5	33.5	36.0	12.0	15.0	2000
110479	–	34.8	42.0	15.0	18.0	2000
110480	–	36.5	42.0	15.0	18.0	2000
110481	–	38.4	42.0	15.0	18.0	2000
110482	–	40.6	44.0	15.0	18.0	1500
462597	–	42.0	44.5	16.0	18.0	1000
462598	–	36.5	47.0	18.0	20.0	1000
10122	–	42.3	48.0	15.0	18.0	1000
110483	–	46.0	55.0	18.0	21.0	1500
110484	1 3/4" BSP	51.5	55.0	18.0	21.0	1500
110485	2" BSP	58.0	64.0	18.0	21.0	1500
12137	M72 x 2	70.0	78.0	18.0	21.5	500
462599	–	61.5	73.5	20.0	22.0	500

* Domed head and parallel shank.
Other sizes available; please contact our sales office for more details.

plastivis

See our greatly extended range of fasteners and fixings on pages 82 to 106.





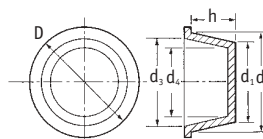
Tapered Caps/Plugs

SR 1000

Tapered Caps/Plugs

Red LDPE

- Low cost
- Use as cap or plug
- Easy fitting and removal
- Over 140 sizes
- Provide excellent protection from damage, dirt, moisture and corrosion during storage and transportation



extended range

Part Number	Dimensions (mm)						Std Pack Qty
	d ₁	d ₂	d ₃	d ₄	h	D	
10836	2.9	4.6	3.0	1.3	9.5	7.9	10000
10991	4.4	6.1	4.5	2.8	9.5	9.5	10000
50222	4.7	8.5	5.7	2.5	22.5	11.7	10000
12419	5.6	7.0	5.4	4.0	8.4	10.5	10000
10727	6.2	7.6	5.9	5.0	9.5	11.1	10000
12482	7.7	9.3	7.0	5.5	8.0	12.7	10000
10549	7.7	9.3	7.7	6.3	9.5	12.7	10000
10289	8.4	10.0	8.2	6.9	9.5	13.5	10000
12562	8.6	10.3	8.2	7.0	9.8	13.7	10000
12483	9.0	10.7	8.8	7.5	11.5	13.9	10000
10325	9.4	10.8	9.3	7.7	8.5	14.0	10000
110195	9.9	11.7	10.1	8.3	10.0	15.0	15000
10750	10.0	11.8	10.0	8.5	9.5	15.0	10000
12420	10.6	12.2	10.0	8.6	9.8	15.6	10000
10114	10.9	12.3	10.7	9.1	9.3	15.9	10000
12421	11.2	14.0	12.1	9.2	18.5	17.5	10000
12422	11.3	12.9	10.9	9.4	8.5	16.3	10000
10421	11.3	13.2	11.6	9.8	11.0	17.0	10000
10174	11.5	13.0	11.5	10.0	9.5	16.7	10000
12901	12.0	14.8	12.0	10.5	11.0	17.5	5000
10237	12.1	13.9	12.3	10.6	11.0	17.5	5000
12563	12.5	14.0	12.0	10.5	8.9	17.5	5000
110196	12.5	14.6	13.3	11.2	12.0	18.0	5000
15137	12.8	15.1	13.2	10.7	23.1	18.5	4000
10438	13.6	15.3	13.7	12.1	11.2	19.0	5000
10342	14.2	16.0	14.4	12.7	12.1	19.0	5000
10424	14.7	17.0	15.4	13.2	12.7	20.6	5000
12481	14.9	16.4	14.5	13.5	11.5	21.0	5000
12423	15.5	17.1	15.0	13.4	8.5	20.6	5000
12564	16.1	17.6	15.5	14.5	8.5	21.0	5000
11139	16.4	18.3	16.9	14.3	12.3	22.2	5000
12196	16.6	18.5	16.5	14.5	13.0	21.9	6000
110197	17.1	19.4	17.8	15.5	13.0	22.0	6500
12197	17.2	20.2	18.0	15.5	18.0	24.2	4000
110198	17.5	20.1	18.5	15.9	15.0	24.0	5000
11088	17.7	19.6	17.3	15.2	12.7	22.2	5000
10394	17.8	20.0	18.3	16.4	13.4	23.8	5000
12424	18.3	21.4	19.3	16.4	17.5	25.4	4000
10208	18.5	20.9	19.3	17.1	14.3	24.6	5000
10728	19.0	21.5	19.7	17.6	14.3	25.8	4000
12925	19.4	22.5	21.3	18.0	19.0	26.5	3000
110199	20.7	23.5	21.9	19.1	16.0	28.0	3500
12425	20.5	23.2	21.2	18.5	17.5	27.2	3000
52071	21.2	23.2	21.7	19.3	12.3	27.3	4000
10676	21.3	23.2	21.5	19.2	15.9	27.0	3000
110200	22.0	24.8	23.2	20.4	17.0	29.0	3000
10376	22.0	25.0	23.0	20.5	15.9	28.5	3000
12565	22.5	25.5	23.3	20.0	17.8	28.9	3000
12426	22.7	24.9	22.7	20.8	12.0	27.0	3000
10136	23.4	26.4	24.4	21.4	17.5	29.3	2500
12427	24.0	26.9	25.0	21.9	18.0	31.0	2000
12567	24.6	29.5	27.5	22.5	27.5	34.0	1500
10732	24.7	27.7	26.1	23.2	19.0	32.0	2000
110201	25.2	29.2	27.7	23.7	19.0	33.0	2000
12999	26.6	29.7	28.3	24.6	26.3	31.6	1500
110202	27.8	31.1	29.5	26.2	19.0	35.0	1800
10250	28.0	30.9	29.0	26.5	19.0	35.3	2000
11173	29.2	31.2	30.3	28.0	12.7	34.7	2000

To Fit Thread Size	
As Cap	As Plug
M4	M6, 1/4" UNF
M5/M6 1/4" UNF	M8, 5/16" UNF
M8, 5/16" UNF	3/8" UNF M10, 1/8" BSP, 7/16" UNF
M10 x 1, 1/8" BSP M10, 3/8" UNF	M12 x 1, M12 x 1.5 M12
1/8" BSP	1/4" BSP, 1/2" UNF
M12 7/16" UNF	M14 3/16" UNF
1/4" BSP, 1/2" UNF M14, 9/16" UNF	M16, 5/8" UNF 3/8" BSP M18
M16, 5/8" UNF	M20, 3/4" UNF
3/8" BSP	M20 x 1.5
M18 x 1.5, M18 x 2 3/8" BSP M18	1/2" BSP M20 1/2" BSP
3/4" UNF	M22 M22, 7/8" UNF
7/8" JIC/UNF	M24 5/8" BSP
M20, 1/2" BSP M22 x 2 M22 7/8" UNF	1" UNF
M24, 5/8" BSP	3/4" BSP M27, M26
M27, 1" UNF	M28, M30, 1 1/8" UNF
3/4" BSP M27 x 1.5, M28 x 1.5 M27, M28 M22 x 2	7/8" BSP M25 x 1.5, 7/8" BSP M30

CONTINUED ON NEXT PAGE



SR 1000

Tapered Caps/Plugs

CONTINUED

Part Number	Dimensions (mm)						Std Pack Qty
	d ₁	d ₂	d ₃	d ₄	h	D	
110203	29.8	31.6	31.1	28.3	16.0	37.0	1700
10272	30.0	32.6	30.7	27.5	15.2	36.7	2000
12428	30.5	33.3	31.1	28.4	14.5	37.0	2000
12568	31.1	34.3	32.0	29.3	17.5	38.1	1500
10154	31.1	34.4	32.8	29.8	19.0	38.1	1500
12569	31.6	36.3	34.0	29.8	24.1	40.2	1000
11167	33.3	34.4	32.8	31.4	9.5	38.1	2500
10181	33.3	37.2	35.6	31.7	22.2	41.6	1000
12480	33.9	38.3	36.5	31.9	24.5	42.3	1000
10838	33.9	37.3	35.8	32.0	12.3	42.2	2000
12198	34.9	36.4	35.2	33.1	8.2	42.7	2500
12570	35.9	40.2	37.5	33.2	24.5	44.1	1000
15138	36.3	38.3	37.0	34.6	12.0	42.3	1500
10491	36.9	40.6	39.0	35.0	22.5	44.0	1000
11115	38.6	40.6	39.0	37.1	12.7	44.5	1500
10485	39.6	42.7	41.1	38.2	18.5	47.6	1000
12429	40.8	44.7	41.8	37.7	24.0	49.0	500
10252	41.4	44.8	43.0	39.7	19.0	49.2	1000
11172†	42.5	44.8	43.0	40.7	12.6	50.7	1000
15139	43.4	48.5	47.0	42.0	24.5	53.3	600
10812	44.1	46.7	45.7	42.8	18.4	49.8	800
110204	44.4	47.7	46.1	42.8	19.0	51.0	1500
10168	45.2	49.0	47.0	43.7	24.5	53.4	600
10439	45.9	46.3	45.0	44.3	9.5	50.8	1500
15136	46.0	50.0	48.0	44.3	24.8	54.0	500
110205	46.4	51.0	49.6	45.2	25.0	55.0	1500
12430	47.2	51.9	48.7	44.5	24.0	55.8	500
11131	47.5	50.3	49.0	45.2	25.0	54.0	500
10820	48.0	52.7	50.7	46.3	25.4	57.1	500
10086	48.6	51.2	48.9	46.7	18.7	55.5	500
12746	48.9	53.0	52.0	47.2	24.3	58.0	500
10624	51.1	54.4	52.0	47.7	25.0	57.0	500
10935	51.5	54.1	52.0	49.6	18.5	58.3	500
11047	53.5	57.0	55.3	51.2	25.1	62.4	400
12431	54.0	58.4	55.0	50.8	24.5	62.4	400
110206	54.2	58.6	57.0	52.6	26.0	65.0	900
10616	55.0	61.0	59.0	52.2	25.0	65.0	400
11168	55.4	58.8	57.2	53.7	25.1	65.0	400
11169	57.5	57.6	56.1	55.2	12.8	63.6	700
110207	58.4	62.8	61.1	56.7	25.0	67.0	900
11100	59.3	67.3	64.1	56.7	31.7	70.3	300
10249	59.6	62.6	61.0	57.0	24.6	66.7	300
11075	62.0	66.4	64.3	59.0	28.0	71.0	300
10292	63.3	69.8	67.8	61.5	25.4	73.0	400
10399	64.5	67.3	62.1	65.6	15.8	70.6	400
110208	67.1	70.4	68.7	65.4	19.0	75.0	1000
11064	68.1	70.9	69.3	66.3	19.0	74.6	400
10302	70.0	75.8	74.0	68.1	25.4	79.4	300
110209	72.4	75.7	74.1	70.8	19.0	83.0	800
10617	74.0	77.0	73.9	71.5	18.7	82.5	300
10550	74.0	76.8	73.4	70.0	24.4	80.0	600
11023	76.8	82.2	80.8	74.8	25.4	85.7	500
11170	77.1	80.7	78.2	74.8	19.0	85.7	300
11037	80.0	86.1	82.0	77.5	25.1	89.8	500
10353	84.2	90.8	88.3	80.2	28.0	94.5	500
110210	84.5	87.8	85.7	82.4	19.0	92.0	500
11171	85.3	88.0	85.5	82.9	19.0	92.0	250
12572	87.5	93.6	90.5	84.3	34.3	96.7	250
10304	88.1	93.3	89.9	85.1	28.6	96.5	300
10253	92.1	97.0	94.0	88.3	32.0	100.0	300
10697	93.5	100.3	97.8	89.9	26.5	107.5	400
462569	97.0	101.5	99.5	95.0	30.0	109.0	200
12573	94.5	100.6	97.0	91.0	34.5	103.6	100
12199	98.0	102.0	98.5	94.8	24.7	107.2	400
10551	98.2	103.3	99.0	95.0	28.8	106.0	300
110785	101.0	107.0	103.0	98.0	28.6	109.0	300
10688	101.9	107.5	103.0	98.0	28.6	109.0	300
10771	106.7	111.7	107.4	101.5	28.6	113.3	250
10455	108.0	114.1	111.6	105.4	35.2	118.5	250
462570	109.0	113.0	111.0	107.0	27.0	123.0	175

To Fit Thread Size	
As Cap	As Plug
M30 x 1.5, M30 x 2, 7/8" BSP	M32x1.5, M33x1.5/2, 1 5/16" JIC/UNF, 1" BSP
M30	M33, 1" BSP
7/8" BSP	1 3/8" UNF
M33, M32, 1 1/4" UNF	M35
1 7/16" UNF	
M35, 1" BSP	M36, M38, 1 1/8" BSP, 1 1/2" UNF
1 3/8" UNF	1 3/8" UNF
M38, 1 1/8" BSP	M39, M40, 1 1/4" BSP
1 1/2" UNF	M42, M45, 1 3/8" BSP
M39, M40	
M42, 1 1/4" BSP	M45
M45 x 1.5/2/3	M48 x 2, 1 7/8" JIC/UNF, 1 1/2" BSP
M45, 1 3/8" BSP	M48, 1 1/2" BSP
	M48
1 1/2" BSP	
M48, 1 1/2" BSP	M52
M52, 1 3/4" BSP	M56, M55
M58	M60, M58, 2" BSP
M60 x 1.5/2/4, 2" BSP	M60 x 1.5, M62 x 1.5
M60, 2" BSP	M62, M60
	2 1/2" BSP
	M76, M75, 2 1/2" BSP
2 1/2" BSP	
3" BSP	3" BSP
	3" BSP

Ordering Guide

When used as a cap, the d₄ dimension should be at least 0.5mm per centimetre less than the diameter to be capped. Diameters over 30mm may require more interference.

When used as a plug, the d₂ dimension should be at least 0.5mm per centimetre larger than the opening. Diameters over 30mm may require more interference.

CONTINUED ON NEXT PAGE

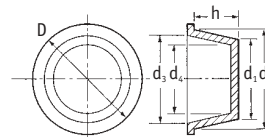


Tapered Caps/Plugs

SR 1000

Tapered Caps/Plugs

CONTINUED



Part Number	Dimensions (mm)						Std Pack Qty
	d ₁	d ₂	d ₃	d ₄	h	D	
10837	110.0	115.0	109.0	105.5	28.0	118.5	250
12574	111.5	117.6	115.0	107.5	35.0	122.0	250
10133	112.1	114.3	109.8	107.5	28.6	116.8	250
10355	124.0	128.0	125.0	121.0	23.0	134.0	150
12575	129.0	135.1	132.0	124.0	36.5	139.5	150
462571	133.0	137.0	134.2	130.2	22.0	143.0	150
12576	139.5	145.6	140.0	135.0	36.5	150.0	150
39665†	141.0	150.0	148.0	138.0	25.4	164.0	140
10356	146.8	152.6	148.6	142.8	33.0	159.5	100
39649	153.7	161.5	160.0	152.0	29.6	178.9	135
12577	157.0	163.0	160.0	152.0	36.5	167.5	100
39196*	202.9	203.8	198.8	198.0	32.7	218.7	100
462572	203.5	208.5	205.9	200.9	24.0	216.0	60
39666	216.0	223.6	223.0	213.0	29.1	241.5	100
39195*	252.2	257.8	247.8	247.2	33.8	272.5	50
39149*	304.2	308.4	299.4	299.2	33.9	322.6	30

* Black LDPE. † Blue LDPE.

† Includes six ribs on shank for extra secure fit when used as a plug.

Ordering Guide

When used as a cap, the d₄ dimension should be at least 0.5mm per centimetre less than the diameter to be capped. Diameters over 30mm may require more interference.

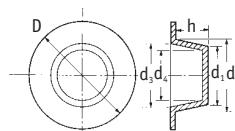
When used as a plug, the d₂ dimension should be at least 0.5mm per centimetre larger than the opening. Diameters over 30mm may require more interference.

SR 1001

Tapered Caps/Plugs – Large Flange Range

Red LDPE

- Complement SR 1000 caps and plugs
- Large flange for greater protection and easy removal



Part Number	Dimensions (mm)						Std Pack Qty
	d ₁	d ₂	d ₃	d ₄	h	D	
12432	7.6	9.3	7.7	6.3	9.5	18.4	10000
12433	10.7	12.3	10.7	9.1	9.5	22.0	10000
10420	11.3	13.2	11.6	9.8	11.0	29.0	10000
12434	13.5	15.5	13.2	11.4	9.5	30.0	5000
18349	13.6	15.4	13.8	12.2	11.1	22.2	8000
18351	14.7	16.9	15.4	13.2	12.7	25.4	6000
12435	17.5	20.0	18.5	16.1	14.3	34.9	3000
18356	19.1	21.5	19.9	17.6	14.3	38.1	2500
12436	21.9	25.0	22.0	18.9	17.5	48.0	1500
12134*	22.5	25.3	23.5	20.8	17.3	55.4	3000
18357	24.7	27.7	26.1	23.2	19.1	38.1	1500
12437	30.4	33.6	30.7	27.8	15.2	47.3	1400
18360	31.1	34.4	32.8	29.8	19.1	47.6	1000
12438	33.3	37.2	35.6	32.0	22.2	50.8	800
12439	36.9	40.6	39.0	35.0	22.5	54.2	800
18362	41.4	44.8	43.0	39.7	19.0	57.2	700
12441	47.2	51.9	48.7	44.5	24.0	72.0	400
18366	48.3	52.7	50.7	46.3	25.4	63.5	1200
18368	51.5	54.1	52.0	49.6	18.5	66.7	500
18373	55.0	61.0	59.0	52.5	25.0	76.7	300
18374	62.0	66.4	64.3	59.0	28.0	83.0	250

* Supplied with vent hole.

Other sizes and polypropylene option available; please contact our sales office for more details.

To Fit Thread Size	
As Cap	As Plug
1/8" BSP	1/4" BSP, 1/2" UNF
1/4" BSP, 1/2" UNF	M16, 3/8" UNF
M18	M18
	1/2" BSP
	M27, M30
M30	M33, M32, 1" BSP
M33, M32, 1 1/4" UNF	M35
M35, 1" BSP	M36, M38, 1 1/4" BSP, 1 1/2" UNF
M38, 1 1/8" BSP	M39, M40, 1 1/4" BSP
M42, 1 1/2" BSP	M45
M48, 1 3/4" BSP	M52



Try it! Free sample service

If you would like a sample of any of our products to evaluate suitability before you order please call us, or visit our website www.mossplastics.com to order direct.

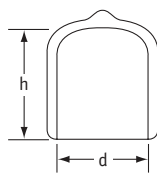


SR 1044

Flexicaps

Black Flexible PVC

- Flexible, durable PVC
- Suitable for a multitude of applications



Part Number	To Fit Thread Size			Dimensions (mm)		Std Pack Qty
	Metric	BSP	UNF	d	h	
FCWA-0020-013	-	-	-	2.0	13.0	5000
FCWA-0028-013	M3	-	-	2.8	13.0	5000
FCWA-0032-013	-	-	-	3.2	13.0	5000
FCWA-0036-013	M4	-	-	3.6	13.0	5000
FCWA-0036-019	M4	-	-	3.6	19.0	5000
FCWA-0036-025	M4	-	-	3.6	25.0	5000
FCWA-0039-013	-	-	-	3.9	13.0	5000
FCWA-0039-019	-	-	-	3.9	19.0	5000
FCWA-0039-025	-	-	-	3.9	25.0	5000
FCWA-0044-013	M5	-	3/16"	4.4	13.0	5000
FCWA-0044-019	M5	-	3/16"	4.4	19.0	5000
FCWA-0044-025	M5	-	3/16"	4.4	25.0	5000
FCWA-0048-013	M5	-	3/16"	4.8	13.0	5000
FCWA-0048-019	M5	-	3/16"	4.8	19.0	5000
FCWA-0048-025	M5	-	3/16"	4.8	25.0	5000
FCWA-0052-013	-	-	-	5.2	13.0	5000
FCWA-0052-019	-	-	-	5.2	19.0	5000
FCWA-0052-025	-	-	-	5.2	25.0	5000
FCWA-0055-013	-	-	-	5.5	13.0	5000
FCWA-0055-019	-	-	-	5.5	19.0	5000
FCWA-0055-025	-	-	-	5.5	25.0	5000
FCWA-0059-013	M6	-	1/4"	5.9	13.0	5000
FCWA-0059-019	M6	-	1/4"	5.9	19.0	5000
FCWA-0059-025	M6	-	1/4"	5.9	25.0	5000
FCWA-0064-013	-	-	1/4"	6.4	13.0	5000
FCWA-0064-019	-	-	-	6.4	19.0	5000
FCWA-0064-025	-	-	-	6.4	25.0	5000
FCWA-0077-013	M8	-	5/16"	7.7	13.0	5000
FCWA-0077-019	M8	-	5/16"	7.7	19.0	5000
FCWA-0077-025	M8	-	5/16"	7.7	25.0	5000
FCWA-0079-013	M8	-	5/16"	7.9	13.0	5000
FCWA-0079-019	M8	-	5/16"	7.9	19.0	5000
FCWA-0079-025	M8	-	5/16"	7.9	25.0	5000
FCWA-0083-013	-	-	-	8.3	13.0	5000
FCWA-0083-019	-	-	-	8.3	19.0	5000
FCWA-0083-025	-	-	-	8.3	25.0	5000
FCWA-0087-013	-	-	-	8.7	13.0	5000
FCWA-0087-019	-	-	-	8.7	19.0	5000
FCWA-0087-025	-	-	-	8.7	25.0	5000
FCWA-0095-013	M10	1/8"	3/8"	9.5	13.0	5000
FCWA-0095-019	M10	1/8"	3/8"	9.5	19.0	5000
FCWA-0095-025	M10	1/8"	3/8"	9.5	25.0	5000
FCWA-0103-013	-	-	-	10.3	13.0	5000
FCWA-0103-019	-	-	-	10.3	19.0	5000
FCWA-0103-025	-	-	-	10.3	25.0	5000
FCWA-0111-013	M12	-	7/16"	11.1	13.0	5000
FCWA-0111-019	M12	-	7/16"	11.1	19.0	5000
FCWA-0111-025	M12	-	7/16"	11.1	25.0	5000
FCWA-0119-013	M12	-	1/2"	11.9	13.0	5000
FCWA-0119-019	M12	-	1/2"	11.9	19.0	5000
FCWA-0119-025	M12	-	1/2"	11.9	25.0	5000
FCWA-0127-013	-	1/4"	1/2"	12.7	13.0	5000
FCWA-0127-019	-	1/4"	1/2"	12.7	19.0	5000
FCWA-0127-025	-	1/4"	1/2"	12.7	25.0	5000
FCWA-0135-013	M14	-	-	13.5	13.0	5000
FCWA-0135-019	M14	-	-	13.5	19.0	5000
FCWA-0135-025	M14	-	-	13.5	25.0	5000
FCWA-0138-013	M14	-	-	13.8	13.0	5000
FCWA-0138-019	M14	-	-	13.8	19.0	2500
FCWA-0138-025	M14	-	-	13.8	25.0	5000
FCWA-0143-013	M15	-	-	14.3	13.0	5000
FCWA-0143-019	M15	-	-	14.3	19.0	2500
FCWA-0143-025	M15	-	-	14.3	25.0	5000
FCWA-0152-013	-	-	-	15.2	13.0	5000
FCWA-0152-019	-	-	-	15.2	19.0	5000
FCWA-0152-025	-	-	-	15.2	25.0	5000
FCWA-0159-013	M16	3/8"	-	15.9	13.0	5000
FCWA-0159-019	M16	3/8"	-	15.9	19.0	5000
FCWA-0159-025	M16	3/8"	-	15.9	25.0	2500

Part Number	To Fit Thread Size			Dimensions (mm)		Std Pack Qty
	Metric	BSP	UNF	d	h	
FCWA-0174-013	M18	-	-	17.4	13.0	5000
FCWA-0174-019	M18	-	-	17.4	19.0	4000
FCWA-0174-025	M18	-	-	17.4	25.0	2500
FCWA-0191-013	M20	-	3/4"	19.1	13.0	5000
FCWA-0191-019	M20	-	3/4"	19.1	19.0	2500
FCWA-0191-025	M20	-	3/4"	19.1	25.0	2500
FCWA-0199-013	-	-	-	19.9	13.0	2500
FCWA-0199-019	-	-	-	19.9	19.0	2500
FCWA-0199-025	-	-	-	19.9	25.0	2500
FCWA-0206-013	-	1/2"	-	20.6	13.0	2500
FCWA-0206-025	-	1/2"	-	20.6	25.0	2500
FCWA-0206-038	-	1/2"	-	20.6	38.0	1000
FCWA-0214-013	M22	-	-	21.4	13.0	5000
FCWA-0214-025	M22	-	-	21.4	25.0	2500
FCWA-0214-038	M22	-	-	21.4	38.0	1200
FCWA-0222-013	-	5/8"	7/8"	22.2	13.0	5000
FCWA-0222-025	-	5/8"	7/8"	22.2	25.0	2500
FCWA-0222-038	-	5/8"	7/8"	22.2	38.0	1250
FCWA-0238-013	M24	-	-	23.8	13.0	5000
FCWA-0238-025	M24	-	-	23.8	25.0	1250
FCWA-0238-038	M24	-	-	23.8	38.0	1000
FCWA-0246-013	M25	-	-	24.6	13.0	5000
FCWA-0246-025	M25	-	-	24.6	25.0	1000
FCWA-0246-038	M25	-	-	24.6	38.0	1000
FCWA-0254-013	-	-	1"	25.4	13.0	2500
FCWA-0254-025	-	-	1"	25.4	25.0	2000
FCWA-0254-038	-	-	1"	25.4	38.0	1250
FCWA-0263-013	M27	3/4"	-	26.3	13.0	2500
FCWA-0263-025	M27	3/4"	-	26.3	25.0	1250
FCWA-0263-038	M27	3/4"	-	26.3	38.0	1000
FCWA-0269-013	M27	-	-	26.9	13.0	3000
FCWA-0269-025	M27	-	-	26.9	25.0	1500
FCWA-0269-038	M27	-	-	26.9	38.0	1250
FCWA-0286-025	M30	7/8"	1 1/8"	28.6	25.0	1000
FCWA-0286-038	M30	7/8"	1 1/8"	28.6	38.0	500
FCWA-0286-050	M30	7/8"	1 1/8"	28.6	50.0	750
FCWA-0302-025	-	7/8"	-	30.2	25.0	1000
FCWA-0302-038	-	7/8"	-	30.2	38.0	1000
FCWA-0302-050	-	7/8"	-	30.2	50.0	750
FCWA-0318-025	-	1"	1 1/4"	31.8	25.0	1000
FCWA-0318-038	-	1"	1 1/4"	31.8	38.0	700
FCWA-0318-050	-	1"	1 1/4"	31.8	50.0	750
FCWA-0349-025	M35	-	1 3/8"	34.9	25.0	1000
FCWA-0349-038	M35	-	1 3/8"	34.9	38.0	650
FCWA-0349-050	M35	-	1 3/8"	34.9	50.0	500
FCWA-0381-025	M39	-	1 1/2"	38.1	25.0	1000
FCWA-0381-038	M39	-	1 1/2"	38.1	38.0	600
FCWA-0381-050	M39	-	1 1/2"	38.1	50.0	500
FCWA-0413-025	M42	1 1/4"	-	41.3	25.0	900
FCWA-0413-038	M42	1 1/4"	-	41.3	38.0	500
FCWA-0413-050	M42	1 1/4"	-	41.3	50.0	400
FCWA-0445-025	M45	1 3/8"	-	44.5	25.0	500
FCWA-0445-038	M45	1 3/8"	-	44.5	38.0	500
FCWA-0445-050	M45	1 3/8"	-	44.5	50.0	400
FCWA-0476-025	M48	1 1/2"	-	47.6	25.0	625
FCWA-0476-038	M48	1 1/2"	-	47.6	38.0	400
FCWA-0476-050	-	1 1/2"	-	47.6	50.0	350
FCWA-0508-025	-	-	2"	50.8	25.0	550
FCWA-0508-038	-	-	2"	50.8	38.0	400
FCWA-0508-050	-	-	2"	50.8	50.0	200
FCWA-0539-038	M52	1 3/4"	-	53.9	38.0	400
FCWA-0539-050	M52	1 3/4"	-	53.9	50.0	200
FCWA-0572-038	M58	2 1/4"	-	57.2	38.0	250
FCWA-0572-050	M58	2 1/4"	-	57.2	50.0	200
FCWA-0603-038	-	2 3/8"	-	60.3	38.0	250
FCWA-0603-050	-	2 3/8"	-	60.3	50.0	250
FCWA-0635-038	-	2 1/2"	-	63.5	38.0	250
FCWA-0635-050	-	2 1/2"	-	63.5	50.0	125
FCWA-0667-038	-	-	-	66.7	38.0	150
FCWA-0667-050	-	-	-	66.7	50.0	125
FCWA-0698-038	-	-	-	69.8	38.0	250
FCWA-0698-050	-	-	-	69.8	50.0	200
FCWA-0762-038	-	3"	-	76.2	38.0	200
FCWA-0762-050	-	3"	-	76.2	50.0	150

For details of the yellow temperature-resistant range, see page 171

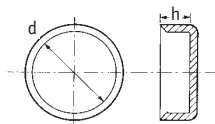


Push-Fit Caps

SR 1610 Tube End Caps – Short

Red LDPE

- General-purpose closure
- Available in a wide range of sizes



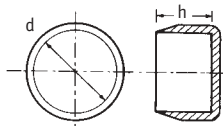
Part Number	Dimensions (mm)		Std Pack Qty
	d	h	
15504*	8.9	8.0	5000
11418	19.0	13.0	5000
11308	22.1	11.0	5000
10888	25.5	13.1	3000
10541	28.5	13.3	2000
10192	31.7	12.8	2000
10389	34.7	12.5	1500
10594	38.0	12.2	1500
10297	41.2	12.8	1200
10152	44.5	12.4	1200
10918	47.0	12.4	1000
11130	50.3	11.7	1000
10539	53.5	12.3	2000
10402	57.5	12.5	700
10557	59.5	12.5	600
10711	63.0	12.6	500
12891	66.4	11.0	1200
10856	69.8	12.1	1500
12310	72.5	12.6	1500
10217	75.5	12.3	1000
11095	79.4	12.7	1000
11045	82.0	12.3	800
12308	85.0	12.2	800

* Supplied in black PVC.

SR 1620 Tube End Caps – Long

Red LDPE

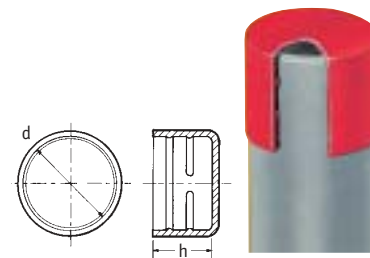
- Extra depth and feathered edge ensure tight fit
- Design prevents accidental displacement



Part Number	Dimensions (mm)		Std Pack Qty
	d	h	
12549	25.0	37.0	1000
12551	31.0	39.0	2000
12532	43.0	43.0	800
12554	57.0	44.0	700
12556	70.0	50.0	400
12558	81.5	54.0	250

SR 1046 Ribbed Caps

Red LDPE



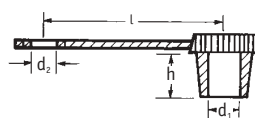
Part Number	Dimensions (mm)		Std Pack Qty
	d	h	
12773	10.2	16.0	10000
12774	12.0	16.0	10000
12775	15.0	19.5	5000
12776	16.0	20.0	5000
12849	18.0	20.0	2500
12777	20.0	20.0	2000
12850	22.0	20.0	2500
12779	25.0	20.0	2000
12780	28.0	26.5	1000
12846	30.0	26.5	800
12781	35.0	26.5	800
12782	38.0	27.0	500
12982	54.0	27.8	300
12960*	110.0	34.6	150

* This part supplied in yellow low-density polyethylene.

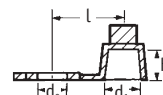
SR 1019 Grease Nipple Caps

Red LDPE

- Effective, low-cost protection for grease nipples



Type 1



Type 2

Part Number	Type	Dimensions (mm)				Std Pack Qty
		d ₁	d ₂	l	h	
12833	1	6.0	6.4	29.5	8.3	10000
61454	2	6.3	6.2	11.6	5.2	10000

SR 1340 PVC Pipe Caps

Grey PVC

- Ideal for traffic signal posts
- Flexible PVC design reduces the risk of cracking, avoiding corrosion to the post
- Flexibility allows caps to be fitted easily
- Supplied in attractive grey colour for close match to traffic signal posts

new



Part Number	Dimensions (mm)		Nominal Pipe Size	Std Pack Qty
	d	h		
462819	76.1	37.0	2½"	250
462820	88.9	37.0	3"	250
462821	114.3	42.0	4"	125
462822	139.7	44.0	5"	80
462823	168.3	34.0	6"	75

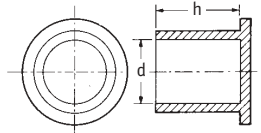


Push-Fit Caps and Pull-Tab Caps

SR 1024/25 Stud Protection Caps

LDPE

- Used throughout the automotive and engineering industries for protecting exposed studs



SR 1024 Natural LDPE Metric with Knurled Head

Part Number	Dimensions (mm)		Std Pack Qty
	d	h	
12754	5.0	13.0	10000
12756	6.0	10.0	10000
12757	8.0	10.0	10000
12758	8.0	16.0	10000
12760	12.0	16.0	8000
10719	12.8	20.2	8000
12763	14.0	20.0	5000
12765	16.0	15.0	5000
12766	16.0	20.0	3000
12769	20.0	15.0	3000
12770	20.0	20.0	2000
12771	22.0	18.0	2000
12772	24.0	18.0	2000

SR 1025 Red LDPE

Part Number	Dimensions			Std Pack Qty
	(ins)	d (mm)	h (mm)	
11098*	-	4.4	12.7	10000
51534*	1/4	6.4	41.3	7000
50454	5/16	7.9	19.1	10000
60273	-	7.5	38.1	5000
50620#	-	8.7	22.2	10000
10660	-	9.1	27.2	7000
11906	7/16	11.1	23.8	6000
51051	-	11.9	22.2	5000
10618	-	11.9	28.6	4000
11160	-	12.7	27.3	4000
10243	1/2	12.7	46.0	2500
11162	-	14.0	21.0	5000
10723	9/16	14.3	33.6	3000
10720	5/8	15.9	23.8	3000
60864	5/8	15.9	71.8	1000
10691	3/4	19.0	33.6	2000
10191	13/16	20.6	36.5	1200
10426	7/8	22.2	77.8	500
10959	-	23.5	55.5	600
11270	1	25.4	55.6	500
11292	1 1/8	28.6	55.6	400
11319	1 1/4	32.0	58.5	1000
60807	1 1/2	38.1	44.5	400

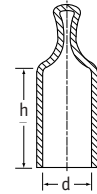
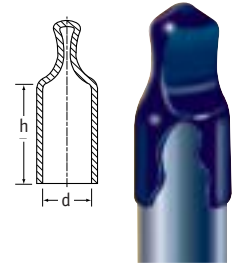
* Black PVC # No flange
Other sizes available; please contact our sales office for more details.

Available in black thermoplastic rubber for high-temperature applications, see page 177

SR 1066 Pull-Tab Flexicaps

Black Flexible PVC

- Ideal for general-protection purposes
- Pull-tab for easy removal



Part Number	To Fit Thread Size			Dimensions (mm)		Std Pack Qty
	Metric	BSP	UNF	d	h	
PCWA-0053-013	M6	-	7/32"	5.3	13.0	5000
PCWA-0061-013	-	-	1/4"	6.1	13.0	5000
PCWA-0075-013	-	-	-	7.5	13.0	5000
PCWA-0075-025	-	-	-	7.5	25.0	5000
PCWA-0077-013	M8	-	5/16"	7.7	13.0	7500
PCWA-0077-025	-	-	-	7.7	25.0	5000
PCWA-0093-013	M10	1/8"	3/8"	9.3	13.0	5000
PCWA-0093-025	-	-	-	9.3	25.0	3000
PCWA-0097-013	-	-	-	9.7	13.0	2500
PCWA-0097-025	-	-	-	9.7	25.0	2500
PCWA-0108-013	-	-	7/16"	10.8	13.0	5000
PCWA-0108-025	-	-	-	10.8	25.0	5000
PCWA-0111-013	-	-	-	11.1	13.0	5000
PCWA-0111-025	-	-	-	11.1	25.0	5000
PCWA-0119-013	M12	-	1/2"	11.9	13.0	5000
PCWA-0119-025	-	-	-	11.9	25.0	5000
PCWA-0124-013	-	1/4"	1/2"	12.4	13.0	5000
PCWA-0132-013	M14	-	11/32"	13.2	13.0	5000
PCWA-0132-025	-	-	-	13.2	25.0	2500
PCWA-0143-025	M15	-	9/16"	14.3	25.0	2500
PCWA-0153-013	M16	-	-	15.3	13.0	2500
PCWA-0153-025	-	-	-	15.3	25.0	2000
PCWA-0159-025	-	3/8"	5/8"	15.9	25.0	2000
PCWA-0175-013	M18	-	11/16"	16.25	13.0	2500
PCWA-0175-025	-	-	-	16.25	25.0	2500
PCWA-0188-013	M20	-	3/4"	18.8	13.0	2500
PCWA-0188-025	-	-	-	18.8	25.0	2500
PCWA-0200-013	-	-	-	20.0	13.0	2500
PCWA-0200-025	-	-	-	20.0	25.0	2500
PCWA-0206-013	M22	1/2"	13/16"	20.6	13.0	2500
PCWA-0206-025	-	-	-	20.6	25.0	2000
PCWA-0220-025	-	5/8"	7/8"	22.0	25.0	1500
PCWA-0238-013	-	-	-	23.8	13.0	1500
PCWA-0238-025	-	-	-	23.8	25.0	1500
PCWA-0251-025	M26	-	1"	25.1	25.0	1500
PCWA-0269-025	-	-	-	26.9	25.0	1500
PCWA-0312-038	M32	1"	1 1/4"	31.2	38.0	1000
PCWA-0408-038	-	-	1 5/8"	40.8	38.0	350

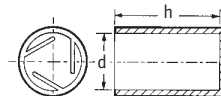
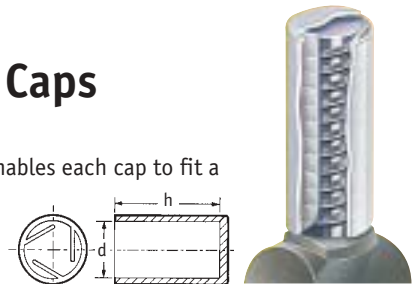
Other sizes available to order; please contact our sales office for more details.

For Pull-Tab Flexicaps in high-temperature material to suit masking applications, see page 170

SR 1056 Finned Stud Caps

Natural LDPE

- Unique finned design enables each cap to fit a range of stud diameters



Part Number	Dimensions (mm)		Stud Size Range (mm)	Std Pack Qty
	d	h		
10220*	10.0	31.5	6.5-8.0	5000
10221	11.0	20.5	8.0-9.0	5000
10223	12.0	20.5	9.0-10.0	5000

* This size has bevelled corners.



Pull-Tab Caps and Non-Threaded End Caps

SR 1020

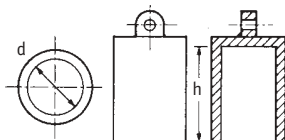
Moss Caps

Black PVC

- Highly resistant to shredding
- Excellent for threaded applications

Green Vinyl

- Can be used with oil and grease applications



Part Number		Dimensions (mm)		Std Pack Qty
Black PVC	Green Vinyl	d	h	
12696	12226	5.0	23.5	10000
12697	12227	6.0	25.0	10000
12698	12228	7.0	24.0	10000
12699	12229	8.0	24.5	8000
12700	12230	9.0	25.0	7000
12701	12231	10.0	29.5	5000
12702	12232	11.0	29.0	4500
12703	12233	12.0	29.0	4000
12704	12234	13.0	29.0	3500
12705	12235	14.0	28.5	3000
12706	12236	15.0	29.5	2500
12707	12237	16.0	28.0	2500
12708	12238	17.0	29.5	2000
12709	12239	18.0	28.5	2000
12710	12240	19.0	29.5	2000
12711	12241	20.0	28.5	1600
12712	12242	21.0	34.5	1300
12713	12243	22.0	34.0	1200
12714	12244	23.0	34.5	1000
12715	12245	24.0	34.0	1000
12716	12246	25.0	34.5	1000
12717	12247	26.0	34.5	900
12718	12248	27.0	33.5	900
12719	12249	28.0	33.5	800
12720	12250	29.0	35.0	800
12721	12251	30.0	34.5	600

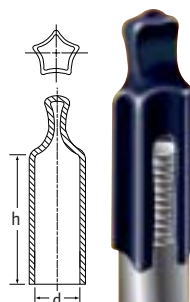
Available in black thermoplastic rubber for high-temperature applications, see page 177

SR 1072

Multi-Flex Caps

Black Flexible PVC

- Easy fitting and removal
- Unique design fits range of diameters
- Suitable for plain or threaded applications



Patented Design

Part Number	To Fit Thread Size			Dimensions (mm)		Std Pack Qty
	Metric	UNF	BSP	d	h	
MFWA-090-025	M10	$\frac{3}{8}$ "	$\frac{1}{8}$ "	9.0-11.0	25.0	5000
MFWA-110-025	M12	$\frac{7}{16}$ " , $\frac{1}{2}$ "	$\frac{1}{4}$ "	11.0-13.5	25.0	2000
MFWA-135-030	M14, M16	$\frac{9}{16}$ " , $\frac{5}{8}$ "	—	13.5-16.5	30.0	2000
MFWA-165-040	M18	$\frac{3}{4}$ "	$\frac{3}{8}$ "	16.5-20.0	40.0	1500
MFWA-200-050	M20, M22, M24	$\frac{7}{8}$ "	$\frac{1}{2}$ " , $\frac{5}{8}$ "	20.0-24.0	50.0	1500

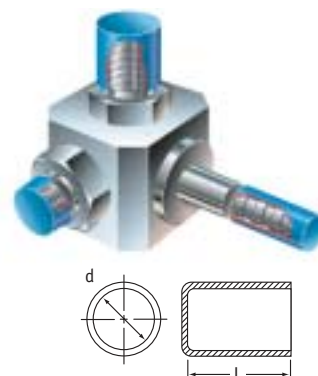
Available for masking applications to withstand temperatures up to +220°C, see page 170

SR 1062

Non-Threaded End Caps

Blue LDPE

- Available in a wide range of sizes
- Ideal for protecting threaded or non-threaded tubing, pipes and rods



Part Number	Dimensions				Std Pack Qty
	d (ins)	d (mm)	L (ins)	L (mm)	
110549	$\frac{5}{32}$	3.9	$\frac{5}{8}$	15.8	45000
110550	$\frac{3}{16}$	4.7	$\frac{5}{8}$	15.8	35000
110551	$\frac{1}{4}$	6.3	$\frac{7}{8}$	22.2	15000
1105525	$\frac{5}{16}$	7.9	$\frac{7}{8}$	22.2	10000
110553	$\frac{3}{8}$	9.5	$\frac{7}{8}$	22.2	8500
110554	$\frac{7}{16}$	11.1	$\frac{7}{8}$	22.2	7000
110555	$\frac{1}{2}$	12.7	$\frac{7}{8}$	22.2	5000
110556	$\frac{9}{16}$	14.2	$\frac{7}{8}$	22.2	4000
110557	$\frac{5}{8}$	15.8	$\frac{7}{8}$	22.2	3500
110558	$\frac{11}{16}$	17.4	$\frac{7}{8}$	22.2	3000
110559	$\frac{3}{4}$	19.0	$\frac{7}{8}$	22.2	5000
110560	$\frac{13}{16}$	20.6	$\frac{7}{8}$	22.2	4500
110561	$\frac{7}{8}$	22.2	$\frac{7}{8}$	22.2	4000
110562	$\frac{15}{16}$	23.8	$\frac{13}{16}$	20.6	3500
110563	1	25.4	$\frac{3}{4}$	19.0	3500
110564	$1\frac{1}{16}$	26.9	$\frac{7}{8}$	22.2	3000
110565	$\frac{1}{8}$	28.5	$\frac{7}{8}$	22.2	2500
110566	$1\frac{1}{16}$	30.1	1	25.4	2000
110567	$\frac{1}{4}$	31.7	$\frac{7}{8}$	22.2	2000
110568	$1\frac{1}{16}$	33.3	$\frac{7}{8}$	22.2	2000
110569	$\frac{1}{8}$	34.9	$\frac{7}{8}$	22.2	1800
110570	$1\frac{1}{16}$	36.5	$\frac{7}{8}$	22.2	1600
110571	$1\frac{1}{2}$	38.1	$\frac{7}{8}$	22.2	1500
110572	$1\frac{9}{16}$	39.6	1	25.4	1200
110573	$1\frac{5}{8}$	41.2	1	25.4	1900
110574	$1\frac{11}{16}$	42.8	$\frac{7}{8}$	22.2	1200
110575	$1\frac{3}{4}$	44.4	$\frac{7}{8}$	22.2	1200
110576	$\frac{1}{8}$	47.6	$\frac{7}{8}$	22.2	1000
110577	2	50.8	$\frac{7}{8}$	22.2	1000
110578	$2\frac{1}{2}$	63.5	$\frac{7}{8}$	22.2	600



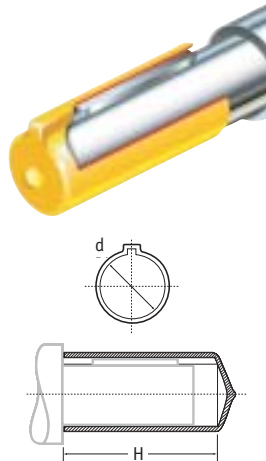
Let us help you
Call 01865 844572



Driveshaft Protection Caps and Threaded Plugs

SR 1079 Driveshaft Protection Caps Yellow Flexible PVC

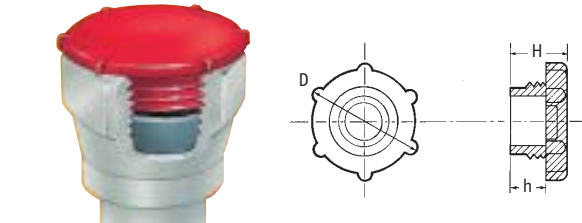
- For cylindrical driveshafts with fitting key
- Resistant to tearing, splitting, oil and most chemicals
- Fit driveshafts to DIN 748, IEC 600-72 and ISO R775
- Easy-pull for quick removal



Part Number	To Fit Shaft Dia (mm)	Dimensions (mm)		Std Pack Qty
		d	H	
SPWJ-09	9.0	9.0	50.0	1500
SPWJ-10	10.0	10.0	50.0	1500
SPWJ-11	11.0	11.0	50.0	1500
SPWJ-14	14.0	14.0	50.0	1500
SPWJ-15	15.0	15.0	50.0	1000
SPWJ-16	16.0	16.0	60.0	1000
SPWJ-19	19.0	19.0	60.0	1000
SPWJ-20	20.0	20.0	60.0	1000
SPWJ-22	22.0	22.0	70.0	750
SPWJ-24	24.0	24.0	70.0	750
SPWJ-25	25.0	25.0	70.0	500
SPWJ-28	28.0	28.0	80.0	500
SPWJ-30	30.0	30.0	80.0	400
SPWJ-32	32.0	32.0	100.0	250
SPWJ-35	35.0	35.0	100.0	200
SPWJ-38	38.0	38.0	100.0	200
SPWJ-42	42.0	42.0	130.0	150
SPWJ-45	45.0	45.0	130.0	150
SPWJ-48	48.0	48.0	130.0	100
SPWJ-55	55.0	55.0	130.0	100
SPWJ-60	60.0	60.0	140.0	100
SPWJ-65	65.0	65.0	140.0	100
SPWJ-70	70.0	70.0	140.0	100
SPWJ-75	75.0	75.0	140.0	100

Other colours available; please contact our sales office for more details

SR 1009 Quick-Fit Threaded Plugs Red LDPE



BSP/Gas

Part Number	Thread Size	Dimensions (mm)			Std Pack Qty
		H	D	h	
10101	1/8" x 19	9.2	20.5	6.0	5000
10102	3/8" x 19	9.6	24.1	6.2	5000
10103	1/2" x 14	9.2	30.4	6.1	3000
10105	5/8" x 14	9.2	30.2	6.0	2500
10106	3/4" x 14	9.1	34.0	6.1	2000
12613	3/4" x 14	12.5	33.2	6.8	2000
10107	1" x 11	9.0	40.2	5.7	1500
12614	1 1/8" x 11	18.7	49.5	12.9	800

Metric

Part Number	Thread Size	Dimensions (mm)			Std Pack Qty
		H	D	h	
12605	M14 x 1.5	12.5	21.5	8.0	5000
12606	M16 x 1.5	12.5	23.6	8.0	3000
18408	M20 x 1.5	13.0	26.0	8.0	3000
12597	M30 x 2.0	14.6	39.9	9.8	1500
12611	M36 x 2.0	21.5	45.6	10.5	1000
12578	M42 x 2.0	21.2	64.7	15.5	700
12602	M45 x 2.0	18.5	57.8	12.7	700
12612	M52 x 2.0	21.3	65.9	15.4	500

Other sizes available; please contact our sales office for more details

UNF/JIC

Part Number	Thread Size	Dimensions (mm)			Std Pack Qty
		H	D	h	
10108	7/16" x 20	9.0	18.5	5.9	5000
10109	1/2" x 20	9.1	20.6	5.9	5000
10110	9/16" x 18	9.0	21.4	5.9	5000
10119	3/4" x 16	9.3	26.7	5.9	3000
10120	7/8" x 14	9.2	29.8	6.2	2500
11000	1 1/8" x 12	9.0	33.9	5.9	2000
11001	1 5/8" x 12	9.4	40.3	6.0	1500



Use the Web...

- Try our product selector
- Request literature, product samples and quotations
- View our complete product range
- Search for specific products by part number or keyword
- Find product information, latest products and news
- Place your order direct

www.mossplastics.com

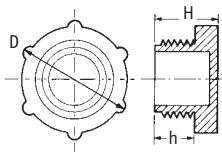


Threaded Plugs

SR 1002 Threaded Protection Plugs

Red LDPE

- Fit extensive range of threaded applications
- Easy-to-grip head
- Thread ensures secure fit
- Excellent protection from dirt, moisture and corrosion
- Widely used in hydraulic, pneumatic and general engineering industries



Metric

Part Number	Thread Size	Dimensions (mm)			Std Pack Qty
		H	D	h	
12011	M8 x 1	14.3	12.3	9.5	5000
12012	M10 x 1	14.6	15.3	10.4	5000
12013	M12 x 1	16.7	18.5	10.7	5000
12017*	M12 x 1.5	16.3	16.7	8.7	5000
12018*	M14 x 1.5	17.2	18.5	9.5	5000
12019	M16 x 1.5	17.2	22.0	12.5	3000
10458	M18 x 1.5	18.3	24.4	13.7	4000
12020	M20 x 1.5	18.2	26.3	14.0	3000
10128	M22 x 1.5	18.3	28.2	13.7	3000
12021	M24 x 1.5	18.5	31.3	13.8	2000
12022	M25 x 1.5	18.5	31.3	14.0	2500
12023	M26 x 1.5	18.7	32.7	13.8	2000
12030	M52 x 1.5	21.5	63.7	15.5	500

* Hexagonal head.

Other sizes available.

UNF/JIC

Part Number	Thread Size	Dimensions (mm)			Std Pack Qty
		H	D	h	
10498	5/16" x 18	12.0	14.5	7.4	5000
10709	5/16" x 24	12.3	14.8	7.4	5000
10692	3/8" x 24	14.0	13.7	9.5	5000
10763	7/16" x 20	16.1	17.4	11.0	5000
12031	7/16" x 24	12.1	17.8	7.1	5000
10696	1/2" x 20	15.3	18.5	10.5	5000
10668	9/16" x 18	15.4	22.6	10.7	5000
12033	9/16" x 24	13.6	18.9	9.0	5000
10940	5/8" x 18	14.8	21.0	10.0	5000
12965	5/8" x 24	14.8	20.7	10.0	5000
12786	11/16" x 16	18.1	25.6	13.5	3000
10575	3/4" x 16	18.7	27.0	13.8	3000
12827	13/16" x 16	18.1	26.7	13.5	2500
10326	7/8" x 14	18.5	28.8	13.6	2500
12785	1" x 14	17.8	32.0	13.2	2000
10460	1 1/16" x 12	18.4	33.4	13.8	2000
12359	1 1/16" x 14	18.3	33.3	13.7	2000
11506	1 1/16" x 12	18.3	36.8	13.5	1500
10671	1 3/16" x 12	16.3	39.3	11.0	1500
11752	1 5/8" x 12	17.3	50.6	12.9	800
12038	1 3/4" x 12	19.7	53.2	13.8	500
11755	1 7/8" x 12	22.5	58.4	16.7	400
12040	2 1/2" x 12	20.6	73.6	15.0	300

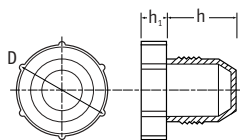
BSP/Gas

Part Number	Thread Size	Dimensions (mm)			Std Pack Qty
		H	D	h	
10651	1/8" x 28	10.5	16.4	4.2	5000
10588	1/4" x 19	12.8	18.8	6.5	5000
10996	3/8" x 19	12.0	22.9	5.5	5000
10590	1/2" x 14	17.3	28.0	10.3	3000
10511	5/8" x 14	18.4	31.3	13.9	2500
10731	3/4" x 14	17.0	32.3	11.0	2000
11429	7/8" x 14	18.1	38.0	13.5	1500
10810	1" x 11	16.9	39.8	10.8	1500
10459	1 1/4" x 11	20.9	49.9	15.0	800
11242	1 1/2" x 11	16.9	55.2	10.8	600
10496	2" x 11	17.5	73.7	10.7	400
10319	3" x 11	16.5	105.0	11.3	150

SR 1077 Threaded Fitting Plugs

Red LDPE

- Knurled head for easy application
- Ideal for sealing 37° flare fittings

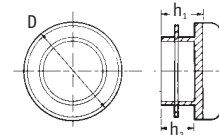


Part Number	JIC/UNF Thread Size	Dimensions (mm)			Std Pack Qty
		D	h	h ₁	
110228	5/16" x 24	13.9	10.7	6.3	12000
110177	3/8" x 24	15.3	11.9	6.4	8500
110178	7/16" x 20	17.2	14.1	6.4	6500
110179	1/2" x 20	17.2	13.7	6.3	6500
110180	9/16" x 18	20.4	12.6	6.4	4500
110181	5/8" x 18	20.8	14.5	6.4	4500
110182	3/4" x 16	24.1	18.6	6.5	2200
110183	7/8" x 14	27.0	21.1	6.5	1800
110184	1 1/16" x 12	34.7	21.8	11.9	1200
110185	1 1/16" x 14	34.0	24.6	6.4	1000
110186	1 3/16" x 12	40.9	23.5	6.3	1400

SR 1008 Snap-Fit Plugs

Red LDPE

- Single turn gives tight fit once pushed into position
- Each plug covers a wide range of threads



Part Number	To Fit Thread Size			Dimensions (mm)			Std Pack Qty
	Metric	BSP/GAS	UNF/JIC	h ₁	D	h ₂	
10530	M10	1/8"	7/16"	6.0	9.8	4.0	12000
12363	M12, M13	1/4"	1/2"	7.0	13.1	5.0	10000
12364	M14	3/8"	5/8"	7.0	16.5	5.0	10000
10314	M18	1/2"	3/4"	9.0	18.3	7.0	7000
12365	M20	1/2"	-	9.0	21.3	7.0	5000
12366	M22	5/8"	7/8"	9.0	22.4	7.0	5000
12621	M24	-	-	9.0	23.5	7.0	3000
12367	M25, M26	3/4"	1 1/16"	9.0	25.5	7.0	2000
12368	M28	7/8"	1 1/8"	9.0	27.9	7.0	3000
12369	M32	1"	1 1/16"	9.0	32.0	7.0	2500
12622	M36	1 1/8"	1 3/8", 1 7/8"	9.0	35.7	7.0	2000
12598*	M40, M42	1 1/4"	1 5/8"	9.0	41.5	7.0	2000

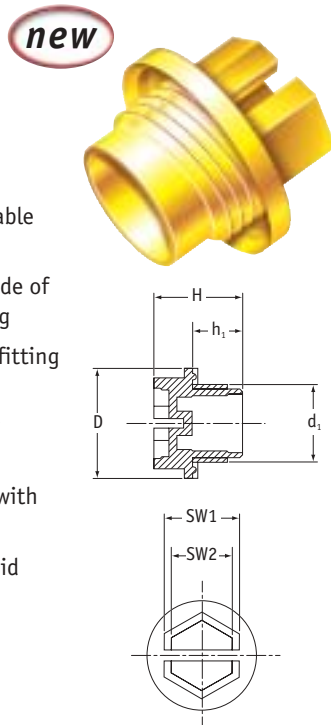
* Pull-tab not as illustrated.



SR 1007 Sealing Slottex Plugs

Yellow Nylon 6

- Manufactured from tough, durable Nylon 6
- Double sealing ring on underside of flange provides positive sealing
- 5 complete threads for secure fitting
- Quick and easy to fit using screwdriver, spanner, socket or allen key
- Can be tightened manually or with power tool
- Head designed not to trap liquid



Metric Thread

Part Number	Thread Size (d ₁)	Dimensions (mm)					Std Pack Qty
		D	H	h ₁	SW1	SW2	
462836	M8 x 1	12.5	15.5	8.0	7.0	4.0	5000
462837	M10 x 1	14.5	16.5	9.0	9.0	6.0	5000
462838	M12 x 1.5	17.0	16.5	9.0	10.0	7.0	5000
462839	M14 x 1.5	19.0	17.5	10.0	13.0	10.0	5000
462840	M16 x 1.5	22.0	17.5	10.0	15.0	12.0	5000
462841	M18 x 1.5	24.0	17.5	10.0	17.0	14.0	3000
462842	M20 x 1.5	26.0	17.5	10.0	19.0	16.0	3000
462843	M22 x 1.5	28.0	17.5	10.0	21.0	18.0	3000

BSP Thread

Part Number	Thread Size (d ₁)	Dimensions (mm)					Std Pack Qty
		D	H	h ₁	SW1	SW2	
462882	1/8" x 28	16.0	15.5	8.0	12.0	9.0	5000
462848	1/4" x 19	19.0	17.5	10.0	13.0	10.0	5000
462849	3/8" x 19	22.0	17.5	10.0	15.0	12.0	5000
462850	1/2" x 14	27.0	19.5	12.0	19.0	16.0	3000
462851	3/4" x 14	32.0	19.5	12.0	24.0	21.0	2000
462852	1" x 11	40.0	22.5	15.0	30.0	27.0	1000
462853	1 1/4" x 11	50.0	22.5	15.0	36.0	33.0	1000

**Protect
your
hoses
with
Spiral
Guard**

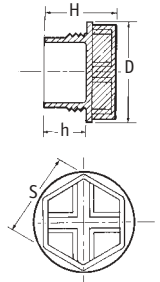


See Page 151.

SR 1005 Slottex Plugs

Yellow HDPE

- Short thread for fast fitting and removal
- Can be applied or removed with screwdriver, spanner or socket; manually or with power tool
- Also available in red polypropylene and natural nylon, made to order
- UNF/JIC sizes available to special order



Metric

Part Number	Thread Size	Dimensions (mm)				Std Pack Qty
		H	D	h	S	
12139	M8 x 1	14.0	12.0	7.0	10.0	5000
12140	M10 x 1	16.0	14.0	9.0	12.0	5000
12141	M12 x 1	16.0	16.0	9.0	13.0	5000
12142	M14 x 1	17.0	19.0	9.0	16.0	3000
12144	M12 x 1.5	17.0	16.0	9.0	13.0	5000
12145	M14 x 1.5	17.0	19.0	9.0	16.0	5000
12146	M16 x 1.5	19.0	21.0	10.0	18.0	3000
12147	M18 x 1.5	19.0	24.0	10.0	20.0	3000
12148	M20 x 1.5	21.0	26.0	12.0	22.0	3000

Other sizes available; please contact our sales office for more details.

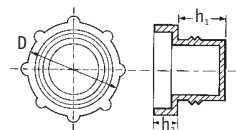
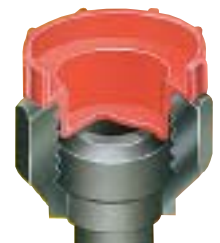
BSP/Gas

Part Number	Thread Size	Dimensions (mm)				Std Pack Qty
		H	D	h	S	
10503	1/8" x 28	16.0	14.0	9.0	12.0	5000
10504	1/4" x 19	17.0	19.0	9.0	16.0	5000
10505	3/8" x 19	19.0	21.0	10.0	18.0	5000
10506	1/2" x 14	21.0	26.0	12.0	21.5	3000
10507	3/4" x 14	21.0	32.0	12.0	27.5	2000
10508	1" x 11	21.0	40.0	12.0	33.5	1500
10509	1 1/4" x 11	21.0	49.0	12.0	44.0	800

SR 1054 BSP Threaded Plugs

Red LDPE

- Fits popular BSP sizes
- Very quick fitting and removal
- Ideal for hydraulic couplings



Part Number	To Fit Thread Size	Dimensions (mm)			Std Pack Qty
		h ₂	D	h ₁	
10097	1/4" x 19	6.0	17.0	4.5	5000
10098	3/8" x 19	6.0	21.0	6.3	5000
10099	1/2" x 14	6.0	27.0	6.8	3000
10548	3/8" x 14	6.0	28.0	9.6	2500

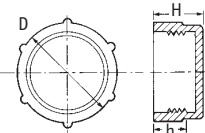


Assorted Hydraulic Protection

SR 1018 Threaded Protection Caps

Red LDPE

- Used throughout the automotive, fluid power and engineering industries
- Protect threaded components from dust, moisture and damage during production, storage and transport



Metric

Part Number	Thread Size	Dimensions (mm)			Std Pack Qty
		H	D	h	
12100	M8 x 1	10.0	9.9	7.0	5000
12101	M10 x 1	10.0	11.9	7.5	5000
12102	M12 x 1	12.0	13.8	9.5	5000
12103	M12 x 1.5	12.0	14.0	9.5	5000
12104	M14 x 1.5	12.0	15.9	9.5	5000
12650	M14 x 1.5	20.6	16.0	9.2	5000
12105	M16 x 1.5	12.0	17.9	9.5	5000
12651	M16 x 1.5	21.0	18.0	9.0	5000
12106	M18 x 1.5	14.0	19.7	11.5	4000
12107	M20 x 1.5	14.0	21.9	9.5	4000
12108	M22 x 1.5	13.8	24.3	11.5	3000
12845	M22 x 1.5	24.5	24.4	17.5	2500
12109	M24 x 1.5	14.0	26.2	11.5	3000
12110	M25 x 1.5	14.0	27.2	11.5	2000
12111	M26 x 1.5	14.0	28.3	11.5	2000
12967	M28 x 1.5	14.0	32.0	12.4	2000
12122	M30 x 2	14.0	34.0	11.5	1500
12123	M36 x 2	16.0	38.8	13.5	1500
12124	M42 x 2	16.0	44.5	13.5	500
12126	M52 x 2	16.0	54.7	13.5	500

UNF/JIC

Part Number	Thread Size	Dimensions (mm)			Std Pack Qty
		H	D	h	
10251	3/8" x 24	8.3	11.0	4.0	5000
12652	7/16" x 24	13.7	13.3	7.8	5000
10332	7/16" x 20	12.9	13.3	8.0	5000
10528	1/2" x 20	13.5	14.5	9.5	5000
11041	9/16" x 18	13.5	16.5	9.5	5000
10653	5/8" x 18	15.6	18.2	7.5	5000
12847	3/4" x 16	13.8	21.7	9.5	4000
12825	13/16" x 16	15.3	23.3	9.3	2500
11089	7/8" x 14	20.2	24.9	14.4	2500
12075	7/8" x 18	20.0	25.3	14.0	2500
12826	1" x 14	17.2	27.6	12.0	2500
10685	1 1/16" x 12	19.0	29.4	11.0	2000
10163	1 7/16" x 12	19.1	32.7	13.0	1500
10151	1 3/8" x 12	22.2	36.4	14.5	1000
12654	1 5/8" x 12	24.5	37.4	10.5	1000
10185	1 7/8" x 12	21.7	38.9	15.2	1000
11053	1 5/8" x 12	22.0	44.8	14.0	800
11804	1 7/8" x 12	25.0	50.3	15.0	500

Other sizes available; please contact our sales office for more details.

BSP/Gas

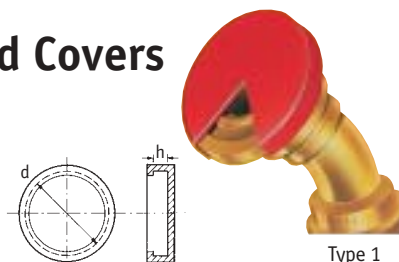
Part Number	Thread Size	Dimensions (mm)			Std Pack Qty
		H	D	h	
10392	1/8" x 28	12.0	11.8	6.5	5000
10559	1/4" x 19	11.0	14.8	8.0	5000
10104	3/8" x 19	11.3	18.7	7.4	5000
10198	1/2" x 14	13.5	23.2	7.0	5000
11157	5/8" x 14	15.7	25.4	10.0	3000
10205	3/4" x 14	17.7	29.4	11.2	2000
10970	7/8" x 14	19.5	32.4	12.5	1500
10204	1" x 11	19.0	36.0	14.5	1500
10167	1 1/4" x 11	19.8	44.4	13.0	1000
10432	1 1/2" x 11	20.5	50.3	14.0	700
10968	2" x 11	21.0	61.9	15.0	400
12954	2 1/4" x 11	25.0	71.5	17.5	350
12905	2 1/2" x 11	27.6	77.9	19.0	300

Other sizes available; please contact our sales office for more details.

SR 1029 SAE Butt Weld Covers

Red LDPE

Type 1



Type 1

SAE 3000psi

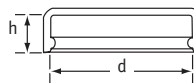
Part Number	Nominal Diameter (ins)	Dimensions		Std Pack Qty
		d (mm)	h (mm)	
12004	1/2"	30.0	9.0	1000
12005	3/4"	37.0	9.0	1000
12006	1"	44.0	10.0	1000
12007	1 1/4"	50.0	10.0	1000
12008	1 1/2"	60.0	10.0	1000
12009	2"	70.0	11.0	1000

SAE 6000psi

Part Number	Nominal Diameter (ins)	Dimensions		Std Pack Qty
		d (mm)	h (mm)	
12534	1/2"	31.8	7.7	1000
12535	3/4"	41.3	8.7	1000
12536	1"	47.6	9.5	1000
12537	1 1/4"	54.0	10.3	1000
12538	1 1/2"	63.5	12.6	1000
12539	2"	79.4	12.6	1000

Type 2

- Designed to protect split-flange coupling surfaces
- The translucent material allows the O-ring to remain visible while providing secure protection by an internal locking bead



SAE 3000psi

Part Number	Nominal Diameter (ins)	Dimensions (mm)		Std Pack Qty
		d	h	
110541	1/2"	30.2	9.9	2500
110542	5/8"	33.7	10.5	4000
110543	3/4"	38.3	11.0	3000
110544	1"	44.7	11.8	2000
110545	1 1/4"	51.0	11.8	1700
110546	1 1/2"	60.5	11.8	1200
110547	2"	71.3	14.8	750
110548	2 1/2"	84.0	12.7	550



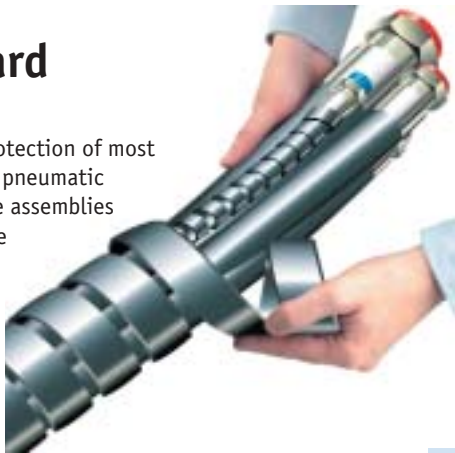
Type 2



SR 1081 Spiral Guard

Black HDPE

- Suitable for the protection of most types of hydraulic, pneumatic and industrial hose assemblies across a wide range of industries
- Exceptional anti-crushing performance
- High abrasion resistance
- Good resistance to UV rays
- Easy to fit – reduces risk of industrial injury
- Operating temperature: minimum -65°C, continuous +90°C, max +100°C
- Suitable for wrapping single hoses or multiple-hose looms
- Proven in arduous conditions
- Conveniently coiled and packed in cartons for easy storage



Supplied lengths and colours:

- Standard product packed in 20-metre coils
- Also available in yellow
- When ordering yellow, add 'Y' as suffix to part number: for example SGX 75Y

How to calculate quantity:

Outside diameter of hose
 Inside diameter of Spiral Guard

Example: 25m length of 40mm diameter hose would require SGX 40
 $40 \div 33 = 1.21 \times 25$ (length of hose) = 30 metres of Spiral Guard

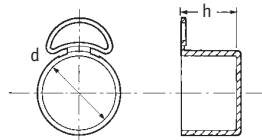
Part Number	Inside Diameter	Wrapping Range	Hose Inside Diameter	1-Wire	2-Wire	Multi Spiral	Dash Size	Std Pack Qty
SGX-12*	9mm	9-13mm	3/16"	✓	–	–	-3	20m
SGX-16	13mm	13-17mm	1/4"	✓	✓	–	-4	20m
SGX-20	16mm	16-22mm	1/4"	✓	✓	–	-4	20m
			5/16"	✓	–	–	-5	20m
			3/8"	✓	✓	✓	-6	20m
SGX-25*	21mm	22-28mm	1/2"	✓	✓	✓	-8	20m
SGX-32	27mm	27-33mm	5/8"	✓	✓	✓	-10	20m
			3/4"	✓	✓	✓	-12	20m
SGX-40*	33mm	33-44mm	1"	✓	✓	✓	-16	20m
SGX-50	44mm	44-65mm	1 1/4"	✓	✓	✓	-20	20m
			1 1/2"	✓	✓	✓	-24	20m
SGX-75	65mm	65-90mm	2"	✓	✓	✓	-32	20m
SGX-90	80mm	Hose Looms 80mm-200mm						20m

* Not available in yellow material.
 Custom sizes are also available with coil lengths of up to 250 metres; please call our sales office for more details.

Please request a sample to test the suitability of this product for your application

SR 1022 Quick-Fit/ Quick-Release Caps

- Quick fitting and removal
- Simple tear-away tab for quick release



BSP/Gas Yellow LDPE

Part Number	Thread Size	Dimensions (mm)		Std Pack Qty
		h	d	
10351	1/4" x 19	11.0	13.0	10000
10492	3/8" x 19	12.0	16.0	5000
10308*	1/2" x 14	15.0	21.2	4000
12373*†	5/8" x 14	18.5	23.0	3000
10701	3/4" x 14	23.8	26.3	1500
12375*	7/8" x 14	25.0	29.5	1500
12376*	1" x 11	18.0	34.0	1500

* Variation in tear-away tab type.
 † Available with safety vent hole.

UNF/JIC Blue LDPE

Part Number	Thread Size	Dimensions (mm)		Std Pack Qty
		h	d	
18390*	3/8" x 24	11.1	9.2	4000
18304*	7/16" x 20	11.7	11.0	5000
18305	1/2" x 20	11.7	12.4	5000
18306*	9/16" x 18	12.1	14.0	5000
10348*	5/8" x 18	12.1	15.5	5000
16245*	11/16" x 16	12.1	17.1	5000
10349*	3/4" x 16	14.2	18.8	4000
16246*	13/16" x 16	14.2	20.4	4000
10702	7/8" x 14	16.5	22.0	2000
16247	1" x 14	16.5	25.0	2000
110002	1 1/16" x 12	19.0	26.7	2000
16248	1 3/16" x 12	19.0	29.8	1000
18311*	1 5/16" x 12	19.0	33.1	1000
16249*	1 7/16" x 12	19.0	36.4	1000
18405*	1 11/16" x 12	21.0	42.4	800
18406*	1 7/8" x 12	24.1	47.5	500
18407*	2 1/2" x 12	30.5	63.3	2500

Metric Yellow LDPE

Part Number	Thread Size	Dimensions (mm)		Std Pack Qty
		h	d	
10839	M12	12.0	12.0	5000
10840	M14	14.1	14.0	5000
10080*	M16	16.5	16.0	5000
10841	M18	18.0	18.0	4000
10842	M20	20.0	20.0	2000
10224	M22	22.0	22.0	2000

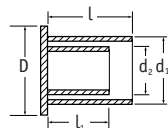


Assorted Hydraulic Protection

SR 1078 O-Ring Face Seal Caps

Blue LDPE

- Purpose-made for protection of ORF female fittings



Part Number	JIC/UNF Thread Size	Dimensions (mm)					Std Pack Qty
		D	d ₁	d ₂	l	l ₁	
110187	3/16" - 18	22.2	19.5	12.7	14.7	8.3	3500
110188	7/16" - 16	25.4	22.9	15.1	17.1	9.4	2500
110189	9/16" - 16	29.4	26.8	19.1	21.0	10.9	3000
110190	1" - 14	34.9	31.9	23.0	23.4	13.5	2000
110191	1 1/16" - 12	41.3	38.9	27.8	26.2	14.5	1200
110192	1 1/8" - 12	46.8	45.8	34.1	27.8	14.7	900
110193	1 1/4" - 12	54.0	53.2	40.5	27.8	14.7	700
110194	2" - 12	68.3	64.0	47.6	27.8	14.7	450

SR 1084 Quick-Fit Connector Cap

new

Natural LDPE

- Protects hydraulic quick-connector and pipe from ingress of dust and dirt
- Used extensively in automotive applications
- Quick to fit
- Pull-tab for easy removal
- Designed to fit 'Raymond™' No. 10 connector

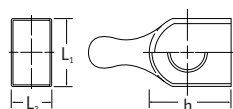


Part Number	To fit Connector	Std Pack Qty
110600	No. 10	2000

SR 1071 Banjo Union Caps

Yellow Flexible PVC

- Snug fitting protects against dirt ingress
- Flexible, for easy fitting
- Fits hydraulic banjo unions to DIN 7642 B/E
- Finger tab for quick fitting and removal



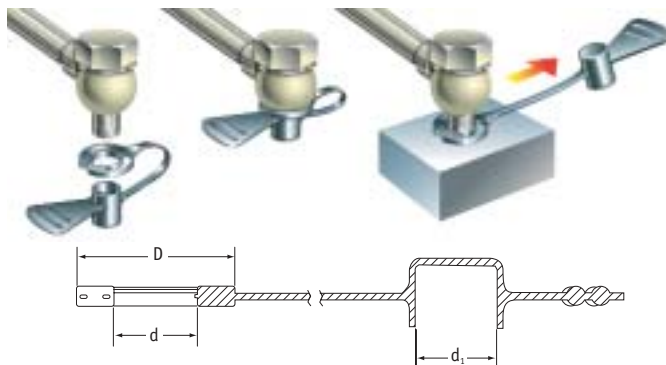
Part Number	Pipe Outside Diameter (mm)	Dimensions (mm)			Std Pack Qty
		L ₁	L ₂	h	
BCWJ-08	4.0/5.0	14.0	8.0	15.0	5000
BCWJ-10	6.0	17.0	10.0	20.0	5000
BCWJ-12	8.0	20.0	12.0	25.0	2500
BCWJ-14	10.0	24.0	14.0	30.0	2500

Available in other colours; please contact our sales office for more details.

SR 1083 Banjo Bolt Caps

Black LDPE

- Protection cap and retaining washer in one unit
- Hold everything together during assembly, storage and shipment
- Protect against damage and dirt ingress
- Easy to grip, even when wearing gloves



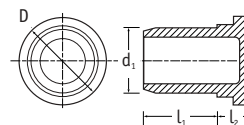
Part Number	For Banjo Bolt Diameter (mm)	Dimensions (mm)				Std Pack Qty
		d	D	d ₁	Length	
110486*	M8	8.3	16.5	7.8	50.0	5000
110487	M10	10.3	22.0	9.6	50.0	5000
110488	M12	12.3	24.0	11.6	50.0	5000
110489	M14	14.3	26.0	13.6	50.0	5000

* Supplied with bridged retaining loop.

SR 1016 Banjo Union Plugs

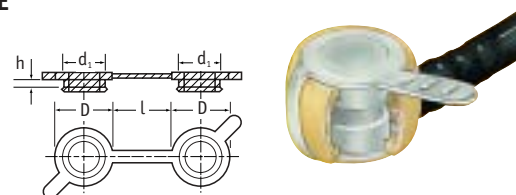
Natural LDPE

- Prevent ingress of dirt and moisture
- Fit banjo unions DIN 7642 B/E



Part Number	Pipe Outside Diameter (mm)	Dimensions (mm)				Std Pack Qty
		d ₁	L ₁	L ₂	D	
12863	8.0	12.3	18.0	6.5	18.9	5000
12864	10.0	14.3	20.0	6.5	19.8	5000

Natural LDPE



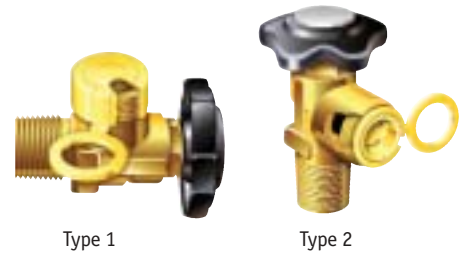
Part Number	Pipe Outside Diameter (mm)	Dimensions (mm)				Std Pack Qty
		d ₁	D	h	l	
12138	6.0	10.6	14.0	2.0	16.0	10000
10196	8.0	12.0	19.0	4.5	20.0	5000



SR 1060 Gas Cylinder Valve Protectors

Yellow LDPE

- Developed in conjunction with major European gas companies
- Protect industrial gas valves from ingress of dust and dirt
- Unique vent flap allows safe release of gas following accidental opening of valve
- Provide tamper evidence

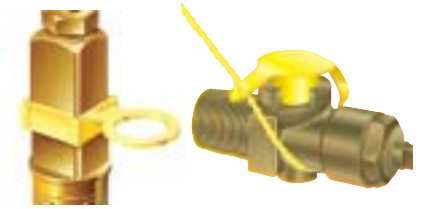


Type 1

Type 2

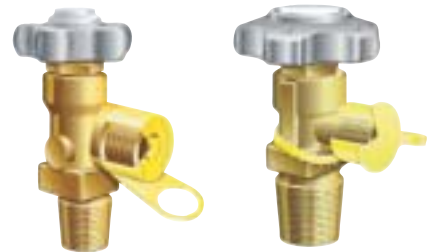
Part Number Std	Vent Flap	Nominal Dia (mm)	Type	To Fit BS Valves†	Main Gases	Std Pack Qty
12940	110048*	21.7	1	–	–	2000
10781	110009	21.8	1	8	CO ₂	2000
110007	110008	24.3	1	–	–	2000
10783	–	25.4	1	–	–	2000
110005	110006	26.4	1	–	–	2000
10784	–	28.8	1	–	–	2000
10785	110004	22.2	2	2, 3, 4	N ₂ , O ₂ , H ₂ , He, C ₂ H ₂ , Ar	2500
10787	–	25.0	3	–	Medical	2000
110049	–	20.0	4	–	–	500
110583	–	30.0	4	–	–	500
–	110584	32.7	4	–	–	500
110239	110240	30.0	5	** Nevoc	–	1000
–	110586	35.0	5	–	–	1000
–	110588	38.0	5	–	–	1000
110589	–	21.8	6	8	CO ₂	500
110590	–	24.3	6	–	–	500
110591	–	26.4	6	–	–	500
110592	–	30.0	6	** Nevoc	–	500

* Supplied with vent strip. † According to standard BS341. ** Designed especially for N.E.V.O.C. valves with 30mm whitworth outlets, as increasingly used on 300-bar cylinders. Other colours available; please contact our sales office for more details.



Type 3

Type 4

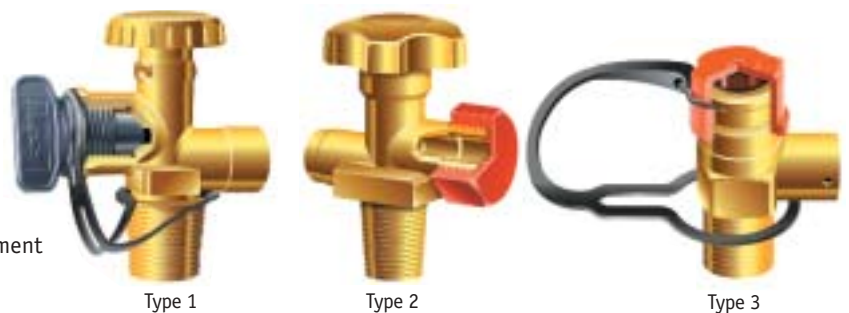


Type 5

Type 6

SR 1085 LPG Caps/Plugs

- Developed with the LPG industry
- Help prevent dangerous gas leaks
- Meet LP Gas Association Code of Practice 15: Part 2
- Strapped to help prevent loss and for ease of replacement
- Marked with direction of fitting/removal



Type 1

Type 2

Type 3

Test Pressure

Propane/mixes (styles 1 & 2) 26 bar

Butane (style 3) 26 bar

Independently tested to withstand these pressures, while providing gas-tight seal, even under extreme temperatures and adverse conditions (test results and certificate available on request).

Part Number	Type	*Service Connection	**Valve Type	Valve Description	Main Gas Type	Std Pack Qty
110471	1	105	–	P.O.L 5/8" BSP - LHT	Propane	1000
110540	2	109	A	W21.8 x 1/14 LHT	Various	1000
110256	3	403	–	20mm 'Quick-On'	Butane	1000
110257	3	402	–	21mm 'Quick-On'	Butane	1000

* According to LP Gas Association Code of Practice 15: Part 2.

** According to DIN 477 Part 1.

Materials Type 1: Plug: HDPE, Strap: LDPE. Type 2: Cap: HDPE. Type 3: Cap: HDPE, Strap: LDPE

SR 1027 Protective Netting

LDPE

- Ideal for external protection of gas cylinders
- Protects against damage during storage or transportation
- Supplied in handy dispensing cartons



Part Number	Diameter Range (cylinder size)	Colour	Standard Pack Qty (metres)
43623	100 – 200mm (2 – 20 ltr)	Black	50
43624	200 – 300mm (20 – 50 ltr)	Purple	50

Pre-cut lengths available; please contact our sales office for more details.



Transit Packaging Protection

SR 1041 Corner Protectors LDPE

Standard Corner Protectors

- Natural low-density polyethylene
- Low cost
- Easy to fit
- Effective protection for goods in transit and storage



Type 1



Type 2

Part Number	Type	Panel Thickness (mm)	Std Pack Qty
12321	1	0.8-1.2	5000
10277	1	2.0-3.0	5000
12834	1	4.0	2000
11564	1	6.0	2000
51800	2	22.0 (min)	2000

Heavy-Duty Corner Protectors

Type 3

- Black low-density polyethylene
- Complete protection
- Fits a variety of panel thicknesses



Type 3

Type 4

- White low-density polyethylene
- Reinforced for greater impact resistance



Type 4

Part Number	Type	Panel Thickness (mm)	Std Pack Qty
36208	3	15.0	600
36209	3	18.0	600
36210	3	22.0	450
36211	3	25.0	400
36212	3	28.0	400
36213*	3	30.0	400
36214	3	32.0	350
36215	3	38.0	300
36216	3	40.0	250
36217	3	47.0	250
39859	4	15.0	1000
39860	4	20.0	250
39861	4	30.0	250
36241*	4	40.0	250

* Black HDPE.

Expanding Corner Protector

- Black low-density polyethylene



Part Number	Panel Thickness (mm)	Std Pack Qty
10914	7-8	2000
10915	9-10	2000
10207	11-12	2000
10209	13-14	2000
10210	15-16	1500
10916	17-18	1500
10211	19-20	1500
10919	21-22	1500
10212	23-24	1000
10214	25-26	1200
10199	27-28	1000
10529	32-33	1000

Expanding Corner Protector

- Open on one side
- Black low-density polyethylene

Part Number	Panel Thickness (mm)	Std Pack Qty
36240	34.0 (min)	350

SR 1050

Edging Strip

Black PVC

- Safety product
- Protects sharp or delicate edges
- Fits irregular shapes
- Fits a range of panel thicknesses
- Handy 50-metre dispensing reels



Part Number	Panel Thickness (mm)	Overall Width (mm)	Std Pack Qty
32343	0.8-1.2	7.0	50m
34074	1.0-2.0	8.0	50m
34075	1.5-2.8	9.5	50m
34076	2.7-3.8	10.5	50m
34077	3.7-5.2	11.0	50m
34078	5.3-6.8	13.0	50m

Urgent Deliveries

We can arrange special deliveries to suit your very urgent needs. Please call us.





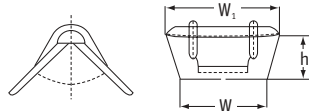
SR 1042 Slotted Edge Protectors

**Black Polypropylene or
Black LDPE**

- Slotted for ease of application
- Polypropylene version for metal strapping



Type 1



Angled Protection Strip

Black LDPE

- Ideal for exposed corners on palletised goods
- Supplied in one-metre lengths

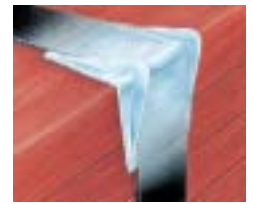


Type 4

Standard Edge Protectors

LDPE or PPCP

- Popular protection for plastic strapping



Type 2

Heavy-Duty Slotted Edge Protectors

Natural LDPE or Linear LDPE

- Suits wide range of sizes and styles of strapping and webbing



Type 3

Protection Band

Blue HDPE

- Made for steel strapping
- Flexible to fit curved and irregular items



Type 5

Part Number		Type	Strap Width (mm)	W	Dimensions (mm)			Raw Material	Colour	Std Pack Qty
No Slot	Slot				W ₁	h	h			
110243	110244	1	18.00	30.00	40.00	25.00	LDPE	Black	2000	
110247	110248	1	18.00	30.00	40.00	25.00	Polypropylene	Black	2000	
110245	110246	1	28.00	40.00	40.00	40.00	LDPE	Black	1000	
110249	110250	1	28.00	40.00	40.00	40.00	Polypropylene	Black	1000	
51563	–	2	19.00	26.30	33.30	26.30	LDPE	Natural	2000	
–	12660	2	24.00	29.40	29.30	21.90	LDPE	Natural	2000	
10180	–	2	28.00	44.30	45.20	27.00	LDPE	Natural	1000	
802802	–	2	28.00	44.30	45.20	27.00	LDPE	Black	2000	
10278	–	2	28.30	43.60	43.70	28.40	PPCP	Natural	1000	
51564	–	2	28.30	43.60	43.70	28.40	LDPE	Natural	1000	
800234	–	2	28.30	43.60	43.70	28.40	LDPE	Black	1000	
–	89395	2	35.80	48.40	64.70	45.83	LDPE	Natural	600	
–	803759	3	55.00	65.30	65.70	46.15	LDPE	Natural	1000	
–	12507	3	55.00	65.30	65.70	46.15	LLDPE	Natural	1000	
39856	–	4	25.40	–	–	–	LDPE	Black	50 x 1m	
–	10203	5	19.00	–	–	–	HDPE	Blue	1000	

Overall Length = 132mm

SR 1027 Protective Netting

Tubular Net LDPE

- Protects irregular shapes
- Excellent stretch capability
- Handy dispensing system
- Pre-cut lengths available
- Colour coded by size



Sheet Netting Black LDPE

- Hard-wearing, flexible sheets
- Ideal for separation and protection of large industrial components
- Supplied in rolls
- Pre-cut lengths available



Part Number	Diameter Range (mm)	Colour	Std Pack Qty
43048	6-17	Orange	250m
43049	10-25	Black	250m
43050	18-60	Violet	50m
43051	50-100	Red	50m
43053	100-200	Yellow	50m
43054	200-400	Blue	50m

Part Number	Thickness (mm)	Mesh Size (mm)	Width (m)	Std Pack Qty
43864	5.5	11.0 x 9.0	2.0	50m



Assorted Building and Home Protection

SR 1206

Wall-Tie Insulation Clips

Blue Polypropylene

- Fit most popular ties used throughout the building trade – BBA approved
- Type 3 will accommodate wire, bar or butterfly wall-ties



Type 1

Type 2

Type 3

Part Number	Type	Clip Style	Std Pack Qty
10889	1	Wire	1000
10890	2	Bar	1000
10425	3	Wire, Bar, Butterfly	1000*

* Sub-packed in quantities of 250.

SR 1047

Cemcaps

Orange PVC

- Safety cap for the construction industry
- Fit ends of reinforcing bars
- Reduce risk of injury to personnel working on construction sites
- Use of this product demonstrates that a health and safety risk has been identified and a preventative measure put in place



Part Number	To Fit Bar Diameter (mm)	Std Pack Qty
10330	6-12	300
10327	12-16	250
10328	20-25	250
10329	32-40	200
10331	40-50	150

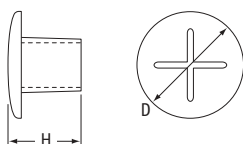
SR 1203

Garden Cane Caps

PVC

- Protect against injury from cane top
- Fit canes from 6mm to 12mm in diameter
- Quick to fit

new



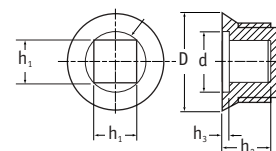
Part Number	Colour	Dimensions (mm)		Std Pack Qty
		H	D	
110601	Yellow	24.0	33.0	2500
110607	Green	24.0	33.0	2500

SR 1063

Radiator Plug

Black Nylon

- Short thread reduces fitting and removal time
- For use manually or with power tool
- Withstands temperatures up to +180°C



Part Number	To Fit Thread Size	Dimensions (mm)					Std Pack Qty
		D	d	h ₁	h ₂	h ₃	
10390	1/2" x 14 BSP	25.3	15.2	10.0	11.0	2.0	4000

Round head drive option and other sizes available; please contact our sales office for more details.

SR 1048

Scaffold Protection Caps

Yellow LDPE

- Ideal for ends of scaffold poles
- Stud cap recommended for exposed clamp studs



Part Number	Style	Std Pack Qty
11238†	Standard	400
11012	Stud Cap	5000

† Without external ribs.

Over 400 million parts in stock for a rapid response to your order

