



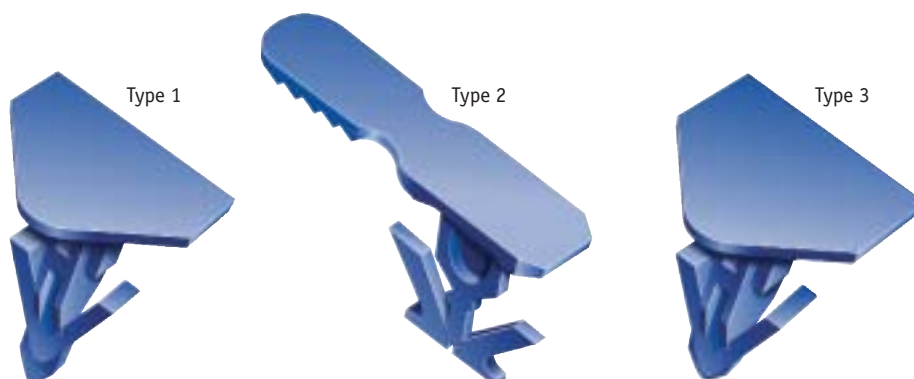
# Identification and Tamper-Evident Seals

## SR 1151 Box Locks

### Polypropylene

- Used to seal plastic lids on distribution containers
- Quicker to apply and remove than conventional strap seals. No need for cutting tools
- Tamper evident
- Stocked plain

*new*



Part Number	Type	Manufacturer	Style	To Suit Container Models	Colour	Std Pack Qty
SECURE-2101	1	Paxton	Folding Lid	CDS350, CDS375S	Red	5000
SECURE-2102					Yellow	5000
SECURE-2103					Green	5000
SECURE-2104					Blue	5000
SECURE-2201	2	Allibert/Arca	Attached Lid	10020, 10022, 10025, 10027, 10040, 10050, 10061, 10066, 10067, 10080, 10125/2910.851, 2911.851	Red	5000
SECURE-2202					Yellow	5000
SECURE-2203					Green	5000
SECURE-2204					Blue	5000
SECURE-2301	3	Linpac	Attached Lid	C1609, C1608, C1573, C1566, C1518	Red	5000
SECURE-2302					Yellow	5000
SECURE-2303					Green	5000
SECURE-2304					Blue	5000

## SR 1151 Identi-Seals

### Polypropylene

- Economical and simple seals with low breaking strength
- Provide instant evidence of use
- Can be manually removed without using cutting tools
- Stocked plain



**Customisation available on request**

**Minimum order quantities apply – contact our sales office for details.**



Part Number	Dimensions (mm)		Colour	Std Pack Qty
	Strap Length	Tag Size		
SECURE-1101	210.0	30.0 x 21.0	Red	1000
SECURE-1102	210.0	30.0 x 21.0	Yellow	1000
SECURE-1103	210.0	30.0 x 21.0	Green	1000
SECURE-1104	210.0	30.0 x 21.0	Blue	1000
SECURE-1111	192.0	26.0 x 18.0	Red	1000
SECURE-1112	192.0	26.0 x 18.0	Yellow	1000
SECURE-1113	192.0	26.0 x 18.0	Green	1000
SECURE-1114	192.0	26.0 x 18.0	Blue	1000

**See page 134 for applications and security-level key**



## SR 1153 Lock Pulls Polypropylene

- Extra security provided by acetal locking mechanism
- Bag grip spikes provide extra security when sealing bags
- Supplied with tear-off feature
- Stocked with unique serial number



Part Number	Strap Dimension (mm)			Colour	Std Pack Qty
	Length	Diameter	Thickness		
SECURE-1301	250.0	3.7	2.0	Yellow	1000
SECURE-1302	300.0	3.7	2.0	Red	1000
SECURE-1303	350.0	3.7	2.0	Blue	1000

## SR 1153 Moss Grips Polypropylene

- Teeth on both sides prevent incorrect insertion
- Recessed teeth offer smoother application
- Supplied with side tear-off and tag holder
- Stocked with unique serial number



Part Number	Strap Dimensions (mm)			Colour	Std Pack Qty
	Length	Width	Thickness		
SECURE-1201	200.0	5.5	2.2	Green	1000
SECURE-1202	250.0	5.5	2.2	Yellow	1000
SECURE-1203	300.0	5.5	2.2	Red	1000

## SR 1153 Smooth Grips Polypropylene

- Smooth strap allows easy application
- Metal insert provides a higher level of security
- Side tear-off for easy removal by hand
- Stocked with unique serial number



Part Number	Strap Dimensions (mm)			Colour	Std Pack Qty
	Length	Width	Thickness		
SECURE-1501	200.0	5.4	2.0	Green	1000
SECURE-1502	250.0	5.4	2.0	Yellow	1000
SECURE-1503	300.0	5.4	2.0	Red	1000

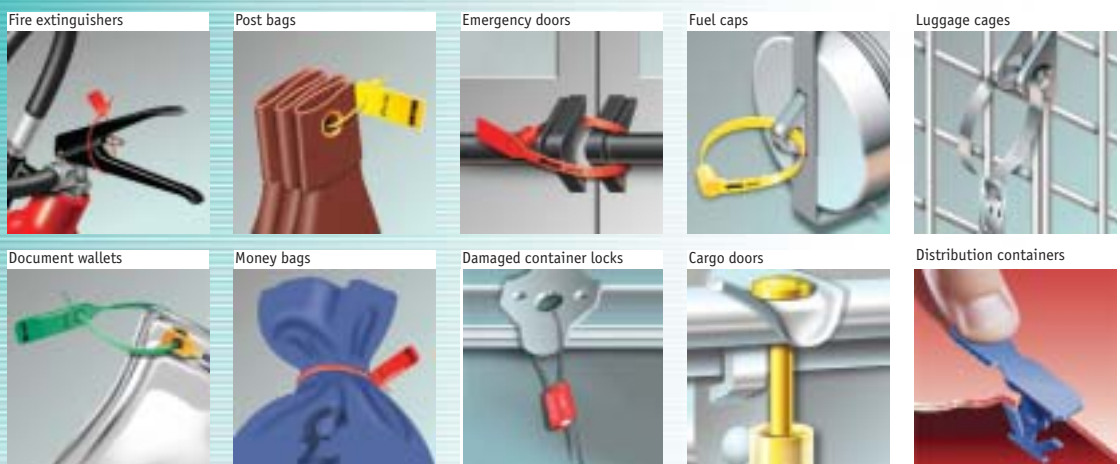
## SR 1153 Ezeseals Polypropylene

- Small strap diameter
- Smooth strap allows easy application
- Metal insert provides a higher level of security
- Stocked with unique serial number



Part Number	Strap Dimension (mm)		Colour	Std Pack Qty
	Length	Diameter		
SECURE-1401	150.0	2.2	Blue	1000
SECURE-1402	200.0	2.2	Green	1000

### Typical Applications





# Fixed-Length and Container Seals

SR 1154

## Fixed-Length Seals

**Polypropylene**

- Highly flexible and versatile seal
- Fixed-loop design
- Double locking mechanism for enhanced level of security
- Type 1 with acetal locking mechanism for additional security
- Type 2 with identification tag for inclusion of additional information



Part Number	Type	Strap Dimensions (mm)			Colour	Std Pack Qty
		Length	Width	Thickness		
SECURE-1601	1	203.5	9.0	1.25	Yellow	1000
SECURE-1701	2	202.5	8.0	1.3	Red	1000

SR 1154

## Metal Lock

**Steel**

- Sophisticated design allows high level of security
- Visual indicator holes to show when the seal has been locked
- Stocked with unique serial number
- Serial numbers permanently embossed



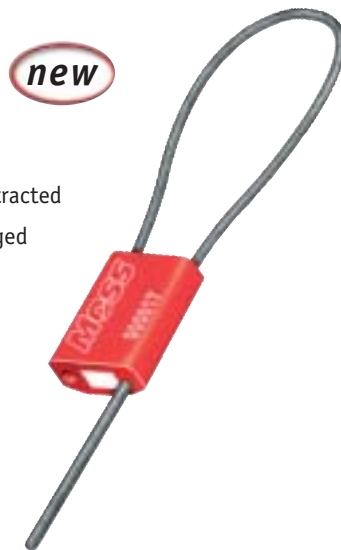
Part Number	Length	Strap Dimensions (mm)		Std Pack Qty
		Diameter	Thickness	
SECURE-2001	185.0	10.0	0.25	1000

SR 1152

## Cable Lock

**Aluminium Housing  
Non-Preformed Cable**

- Internal locking mechanism prevents cable from being retracted
- Flexible cable ideal for damaged or uneven hasps
- Easily applied by hand
- Non-preformed cable splays on cutting to prevent rejoining
- Removed only with bolt cutters
- Stocked with unique serial number



Part Number	Casing Dimensions (mm)		Cable Dimensions (mm)		Colour	Std Pack Qty
	Length	Width	Length	Diameter		
SECURE-1801	32.0	22.0	300.0	2.5	Red	250

SR 1152

## Cargo Bolt Seal

**Yellow ABS and Steel**

- Plastic coating protects bolt from corrosion
- Total seal encapsulation with one directional pin insertion prevents tampering
- Matching serial number for pin and barrel for additional security
- Easily applied by hand
- Removed only with bolt cutters
- Stocked with unique serial number



Part Number	Locking Dimensions (mm)		Barrier Diameter (mm)	Colour	Std Pack Qty
	Distance	Diameter			
SECURE-1901	48.0	9.0-19.0	25.0	Yellow	200



***Our award-winning Sales Department is waiting to take your call***



SR 1060

## Gas Cylinder Valve Protectors

Yellow LDPE

- Developed in conjunction with major European gas companies
- Provide tamper evidence
- Protect industrial gas cylinders from ingress of dust and dirt



Type 1



Type 2



Type 3



Type 4



Type 5

Part Number Std	Vent Flap	Nominal Dia (mm)	Type	To Fit BS Valves†	Main Gases	Std Pack Qty
12940	110048*	21.7	1	–	–	2000
10781	110009	21.8	1	8	CO <sub>2</sub>	2000
110007	110008	24.3	1	–	–	2000
10783	–	25.4	1	–	–	2000
110005	110006	26.4	1	–	–	2500
10784	–	28.8	1	–	–	2000
10785	110004	22.2	2	2, 3, 4	N <sub>2</sub> , O <sub>2</sub> , H <sub>2</sub> , He, C <sub>2</sub> H <sub>2</sub> , Ar	2500
10787	–	25.0	3	–	Medical	2000
110049	–	20.0	4	–	–	500
110583	–	30.0	4	–	–	500
–	110584	32.7	4	–	–	500
110239	110240	30.0	5	** Nevoc	–	1000
–	110586	35.0	5	–	–	1000
–	110588	38.0	5	–	–	1000
110589	–	21.8	6	8	CO <sub>2</sub>	500
110590	–	24.3	6	–	–	500
110591	–	26.4	6	–	–	500
110592	–	30.0	6	** Nevoc	–	500

\* Supplied with vent strip. † According to standard BS341. \*\* Designed especially for N.E.V.O.C. valves with 30mm whitworth outlets, as increasingly used on 300-bar cylinders. Other colours available; please contact our sales office for more details.



Type 6



# Applications and Security Levels

## Applications

Moss can supply a wide range of security seals to provide tamper evidence, for closure of bags or boxes, stock identification and a variety of other applications. Moss security seals provide peace of mind that the products they are applied to have not been tampered with, also deterring theft and protecting the integrity of handlers.

We are confident that this new range provides both cost-effective and high-quality solutions to meet the most exacting demands for security sealing.

## Security Levels

We have classified our seals into certain distinct security levels, from low to very high. The criteria that determine the level of security are as follows: tamper evidence, ease of seal substitution and ease of removal. A low security level seal for example will be used by a customer who only requires tamper evidence. Further security can be provided by the addition of a unique serial number that will allow an audit trail to be followed. Very high security level seals in contrast would provide tamper evidence, normally require bolt cutters to remove and would be unique in their serial number, preventing substitution.

		Product Name	Security Level	Possible Applications
Seals for Identification and Tamper Evidence		Box Locks	Low	Distribution containers
		Identi-Seal	Low	Fire extinguishers Safety deposit boxes Stock identification
Pull-Up Seals		Lock Pull	Medium/High	Inland transportation Courier bags Cash bags Clinical waste bags Postal bags Cash boxes Tanker valves Roll cages Airline doors Duty-free trolleys Luggage Pharmaceuticals Petrochemicals Vehicle doors
		Moss Grip	Medium	
		Smooth Grip	High	
		Ezeseal	High	
Fixed-Length Seals		Fixed-Length Seal (Type 1)	Medium/High	Truck cargo doors Petroleum tankers Bulk food and liquid tankers Shipping containers High-value goods transportation
		Fixed-Length Seal (Type 2)	Medium	
		Metal Lock	High	
Container Seals		Cable Lock	Very High	Truck cargo doors Shipping vessels containers General high-security applications
		Cargo Bolt Seal	Very High	