

MOUNTING BRACKETS



FITTING GAS SPRINGS IS NOW EASIER THAN EVER

ArvinMeritor has introduced a new range of mounting brackets for its industry-leading gas spring range.

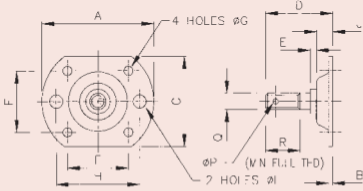
The new brackets are designed to suit the extensive range of ArvinMeritor end fittings, creating a wide range of easy-to-assemble fixing options.

This flexibility makes ArvinMeritor products more attractive than ever, combined with our unique Vari-Lift technology, which allows design engineers to vary the gas spring pressure during prototyping.

Available in a wide range of styles, including 90 degree, flat and raised, the new brackets are drilled to accept M4 and M6 fixings - making it easier to fasten to timber and steel frameworks using screws or dowels. They are designed to accept DIN/ISO standard fixings.

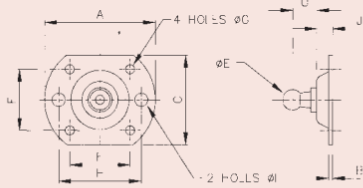
Manufactured in carbon steel with zinc and yellow passivate, the components have passed a minimum of 72 hours of salt spray testing under ASTM B117.

They are designed for ease of assembly with ball pins for ball joints and ISO thread for threaded pins for lock nuts and split pins. The brackets combine compact design with strength - offering an extensive force range capability.



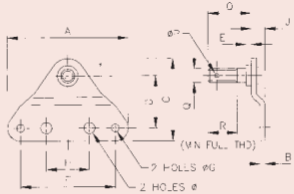
Raised Bracket with Pin (004258E)

Style	Code	A	B	C	D	E	F	G	H	I	J	K	L	M	N	O	P	Q	R	Recommended End Fitting				
Raised Pin	KPR	55	2	44	33	3	30	4.3	41	6.5	8	-	-	-	-	-	2.5	M8 x 1.25	16	E2	E3	F2	Z2	Z4



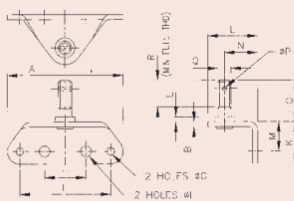
Raised Bracket with Ball (004412E)

Style	Code	A	B	C	D	E	F	G	H	I	J	K	L	M	N	O	P	Q	R	Recommended End Fitting				
Raised Ball	KBR	55	2	44	-	10	30	4.3	41	6.5	8	-	-	-	-	12	-	-	-	B8	P8	P9		



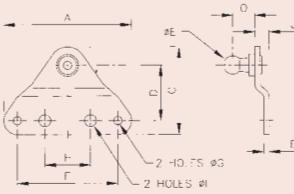
Flat Bracket with Threaded Pin (004266E)

Style	Code	A	B	C	D	E	F	G	H	I	J	K	L	M	N	O	P	Q	R	Recommended End Fitting				
Flat	KPF	70	3	48	30	3	55	4.3	25	6.5	8	-	-	-	-	25	2.5	M8 x 1.25	16	E2	E3	F2	Z2	Z4



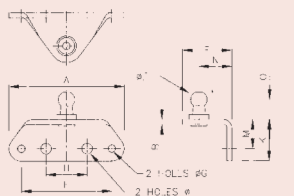
90° Bracket with Threaded Pin (004267E)

Style	Code	A	B	C	D	E	F	G	H	I	J	K	L	M	N	O	P	Q	R	Recommended End Fitting				
Flat	KPN	70	3	-	-	3	55	4.3	25	6.5	-	25	30	18	20	25	2.5	M8 x 1.25	16	E2	E3	F2	Z2	Z4



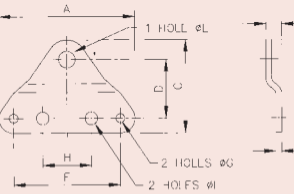
Flat Bracket with Ball Pin (004262E)

Style	Code	A	B	C	D	E	F	G	H	I	J	K	L	M	N	O	P	Q	R	Recommended End Fitting				
Flat	KBF	70	3	48	30	10	55	4.3	25	6.5	8	-	-	-	-	12	-	-	-	B8	P8	P9		



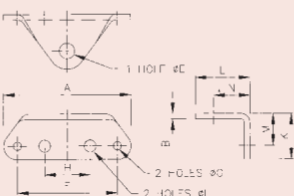
90° Bracket with Ball Pin (004263E)

Style	Code	A	B	C	D	E	F	G	H	I	J	K	L	M	N	O	P	Q	R	Recommended End Fitting				
90°	KBN	70	3	-	-	10	55	4.3	25	6.5	-	25	30	18	20	12	-	-	-	B8	P8	P9		



Flat Bracket with Plain Hole (004264E)

Style	Code	A	B	C	D	E	F	G	H	I	J	K	L	M	N	O	P	Q	R	Recommended End Fitting				
Flat	KHF	70	3	48	30	8.5	55	4.3	25	6.5	8	-	-	-	-	-	-	-	-	B2	BN	P5		



90° Bracket with Plain Hole (004265E)

Style	Code	A	B	C	D	E	F	G	H	I	J	K	L	M	N	O	P	Q	R	Recommended End Fitting				
90°	KHN	70	3	-	-	8.5	55	4.3	25	6.5	-	25	30	18	20	-	-	-	-	B2	BN	P5		



Dimensions are in millimetres

Note: Some brackets may not be compatible with certain configurations of 10-23 and 14-28 gas springs.