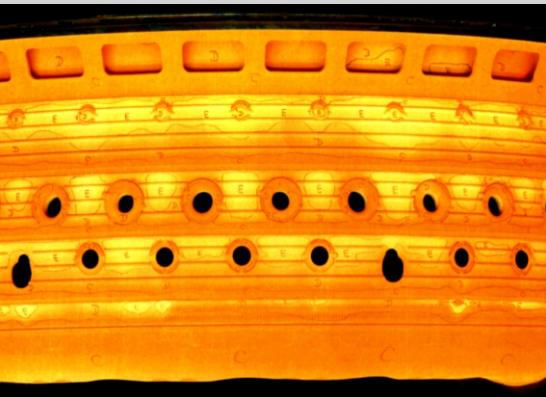


Irreversible Temperature Indicating Paints

THERMAX[®]

Irreversible Paints



ADVANTAGES

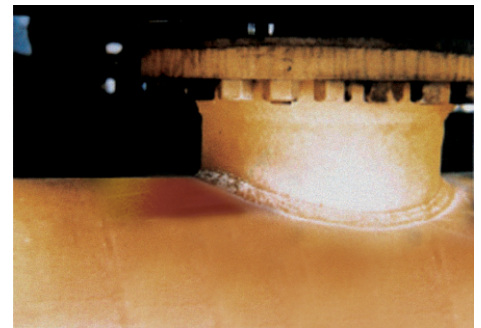
- ◆ **No primer necessary for most surfaces**
- ◆ **Colourfast in direct sunlight**
- ◆ **Fast reaction time**
- ◆ **Superior performance in normal and hostile environments**
- ◆ **Ideal for producing thermal surveys**
- ◆ **A strong and clear colour contrast**
- ◆ **Resistant to oil, steam and water**
- ◆ **Requires no additives**

The information contained in this brochure is to be used only as a guide to assist with product selection. TMC Hallcrest makes no representation or warranty as to the completeness or accuracy of the information contained herein. The products and specifications set forth in this brochure are subject to change without notice and TMC Hallcrest disclaims any and all liability for such changes. The information contained herein is provided without warranties of any kind, either express or implied, and TMC Hallcrest disclaims any and all liability for typographical, printing, or production errors or changes affecting the products and/or the specifications contained herein. All sales of products shall be subject to TMC Hallcrest's General Terms and Conditions of Sale, a copy of which will be provided by upon request.

THERMAX[®] Paints provide a simple method of measuring temperature and are time/temperature dependent. Ideal for producing thermal surveys, these paints offer an accurate method of measuring high temperatures throughout the range of 80°C/176°F to 1270°C/2318°F

SINGLE CHANGE PAINTS

Single Change Thermal Paints provide a clear indication when temperatures have been exceeded, proving to be an extremely useful aid to the industrial, chemical and petrochemical markets. An ideal tool for monitoring lined vessel plant and detecting a rise in surface temperature where the refractory linings have broken down.



Single change paint used for monitoring temperatures on a refractory lined plant

Specifications

Description:	Single Change Paint
°F or °C:	°C
Range:	135°C/275°F* to 630°C/1166°F
Packaging:	250ml, 1 litre and 2.5 litre containers

*A Quasi reversible Single Change Paint is also available at 80°C/176°F

MULTI CHANGE PAINTS

Multi Change Thermal Paints prove a valuable asset, particularly when used in conjunction with gas turbines and jet engines. Being the only paint of its type known to retain its surface adhesion at these temperatures, thus offering a high degree of protection from erosion. Used extensively in rocketry and high speed flight technology, these paints prove to be an invaluable tool in thermal measurement.



MC470-9 giving a thermal profile on an aerospace combustion engine

Specifications

Description:	Multi Change Paint
°F or °C:	°C
Range:	104°C/219°F* to 1270°C/2318°F
Packaging:	250ml, 1 litre and 2.5 litre containers



BS EN ISO 9001:2008
CERTIFICATE NO:FM 35672