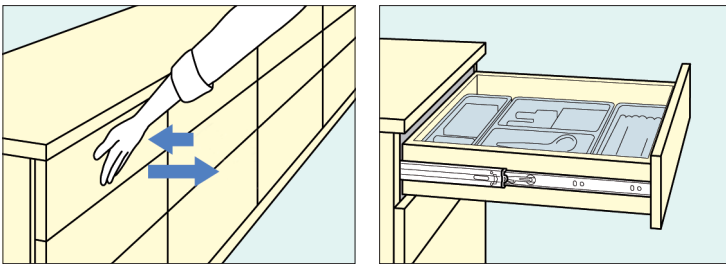


4060 Push-to-open drawer slide

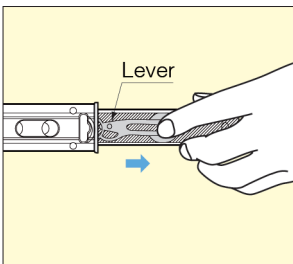


Revolutionary Push-to-Open design lets you open drawers with a single touch

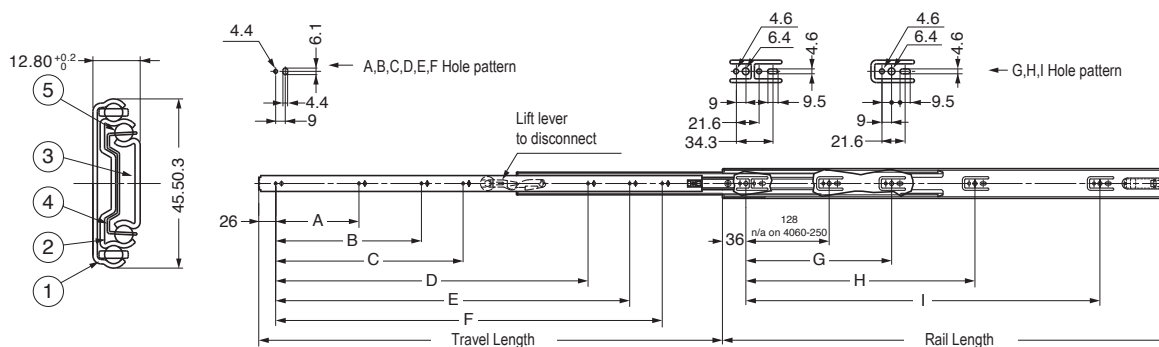
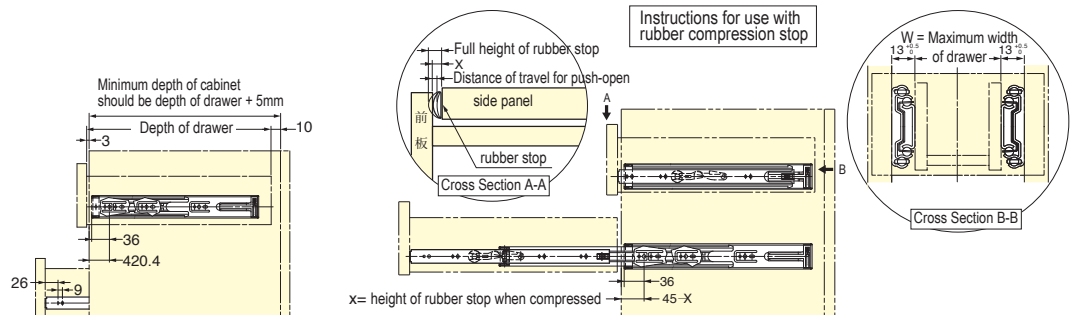


Push once - the drawer slides open!

- Sugatsune push to open technology allows a drawer to open with just a single push
- No knobs or handles required for a sleek modern look
- Push again to close – drawer slide automatically latches, no other latches or catches required
- Front disconnect - easily remove drawer
- Slim ball bearing design is easy to fit
- Full extension maximises load capacity
- Superbly engineered – Japanese quality control guarantees a reliable product built to last and last.



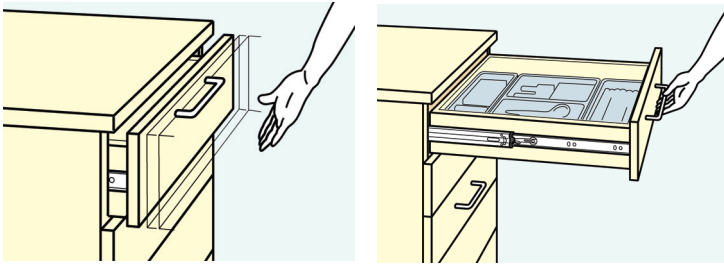
Front disconnect



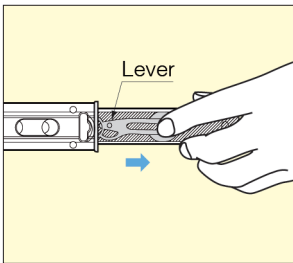
Product Name	Length	Travel Length	A	B	C	D	E	F	G	H	I	W	Capacity: Kgf/pair	Box Quantity
4060-250	250	238	-	-	-	-	-	156	-	-	106	450	20 kgf/pair	10 pairs
4060-300	300	305	-	-	-	-	-	200	-	-	128	500	25 kgf/pair	10 pairs
4060-350	350	356	96	-	-	-	-	256	-	-	192	550	35 kgf/pair	10 pairs
4060-400	400	406	128	-	-	-	-	294	-	-	224	600	40 kgf/pair	10 pairs
4060-450	450	457	96	160	-	-	-	344	-	-	288	650	45 kgf/pair	10 pairs
4060-500	500	508	96	160	352	-	-	394	224	-	352	700	45 kgf/pair	10 pairs
4060-550	550	559	128	192	384	-	-	444	224	-	352	750	40 kgf/pair	6 pairs
4060-600	600	610	128	224	416	-	-	494	224	352	448	800	40 kgf/pair	6 pairs
4060-650	650	660	128	224	416	480	-	544	224	352	480	850	35 kgf/pair	6 pairs
4060-700	700	711	128	224	288	480	544	594	224	352	544	900	35 kgf/pair	6 pairs



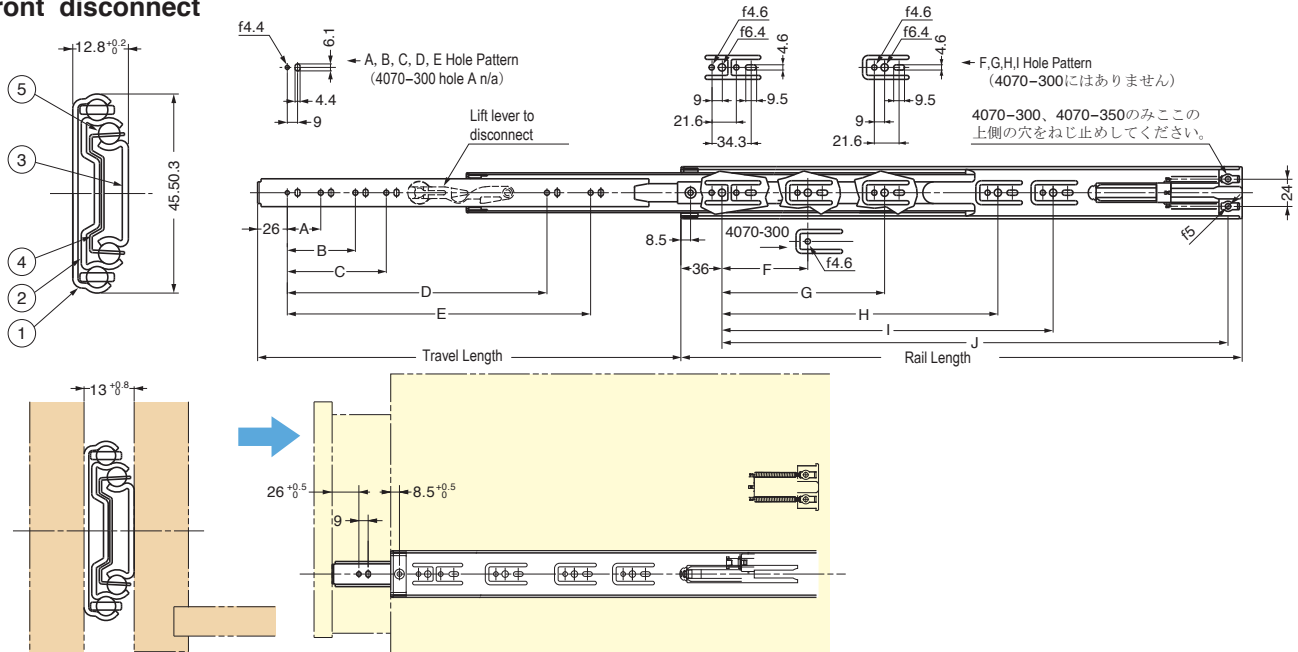
Soft close and drawer slide all in one unit



- Smooth and elegant soft-close mechanism
- Sugatsune precision and reliability
- Simple installation - damper and slide combined
- Front disconnect - easily remove drawer
- Full extension slide to maximise loading capacity
-



Front disconnect



Product Name	Length	Travel Length	A	B	C	D	E	F	G	H	I	J	Capacity: Kgf/pair	Box Quantity
4070-300	300	238	-	-	-	-	156	119	-	-	-	252.5	20 kgf/pair	10 pairs
4070-350	350	305	-	-	-	-	200	128	-	-	-	302.5	25 kgf/pair	10 pairs
4070-400	400	378	96	-	-	-	256	128	208	-	-	352.5	35 kgf/pair	10 pairs
4070-450	450	430	128	-	-	-	294	128	256	-	-	402.5	40 kgf/pair	10 pairs
4070-500	500	482	96	160	-	-	344	128	304	-	-	452.5	45 kgf/pair	10 pairs
4070-550	550	533	96	160	352	-	394	128	224	352	-	502.5	40 kgf/pair	10 pairs
4070-600	600	584	128	192	384	-	444	128	224	352	-	552.5	35 kgf/pair	10 pairs
4070-650	650	635	128	224	416	-	494	128	224	352	448	602.5	35 kgf/pair	10 pairs
4070-700	700	685	128	224	416	480	544	128	224	352	496	652.5	35 kgf/pair	10 pairs