

# HINGES



DETENT/TORQUE/DAMPER  
CLEAN ROOM  
GLASS DOOR  
CONCEALED  
LIFT-OFF  
BUTT

**BUTT HINGES**

Picture	Item No.	Page
	LSA, LSB	194
	LSK (WELD-ON)	194
	KHA	195
	D-S	195
	HG-BF1 (RIM GUARD)	196
	3535/SS, 4040/SS	196
	4545B/SS (W/BALL BEARING)	196
	27800, 27900	197
	28000, 28500	197
	LSF	197
	28100	198
	28300, 28400	198
	50704, 50706 (LEAF HINGE)	198

**SPRING HINGES**

Picture	Item No.	Page
	HG-BF3 (HEAVY DUTY)	199
	HG-SH	199
	SH	199
	HG-PV60AC (PIVOT TYPE)	207

**CLEAN ROOM HINGES**

Picture	Item No.	Page
	HG-CV127 (HEAVY DUTY)	200
	HG-P100 (PVC material)	200
	HG-CV	201
	HG-CV65N (LIFT-OFF)	201

**LIFT-OFF HINGES**

Picture	Item No.	Page
	KN	202
	NH-40	202
	WB-901380, WB-901381	202
	LSX-100	203
	HNH (WELD-ON)	203
	S-6166-2 (WELD-ON)	204
	S-6166-6 (WELD-ON)	204
	S-6173-2	205
	S-6173-5	205

**QUICK RELEASE HINGES**

Picture	Item No.	Page
	HG-OT-45	206
	HG-OT-75/100	206

**DOUBLE ACTION HINGES**

Picture	Item No.	Page
	HG-BH	207

**PIVOT HINGES**

Picture	Item No.		Page
	HG-PV60AC (SPRING LOADED)	<b>STAINLESS 304 STEEL</b>	207
	PP (INSET)	<b>STAINLESS 430 STEEL</b>	208
	PL-60 (OVERLAY)	<b>STAINLESS 430 STEEL</b>	208
	PL-65 (OVERLAY)	<b>STAINLESS 430 STEEL</b>	209
	PL-100 (OVERLAY)	<b>STAINLESS 430 STEEL</b>	209
	WP (OVERLAY)	<b>STAINLESS 430 STEEL</b>	209

**DETENT HINGES**

Picture	Item No.		Page
	HG-FH128 (HEAVY DUTY)		210
	HG-CSH63 (Soft Close Option)		211
	HG-YJ50BL		212
	HG-YC105	<b>STAINLESS 304 STEEL</b>	212

**CELL PHONE HINGES**

Picture	Item No.		Page
	MPH		213

**LIFT ASSIST HINGES**

Picture	Item No.	Torque (lbs-inch)	Page
	HG-JH210	<b>STAINLESS 316 STEEL</b> MAX : 182	224

**GLASS DOOR HINGES**

Picture	Item No.		Page
	GH-34/0/S (INSET)	<b>STAINLESS 304 STEEL</b>	225
	GH-34/8/S (HALF OVERLAY)	<b>STAINLESS 304 STEEL</b>	225
	GH-34/0 (INSET)		226
	GH-34/8 (HALF OVERLAY)		226
	GH-36/NCR (INSET)		227
	GHC-34/8 (HALF OVERLAY, W/CATCH)		227
	XL-GH03-48-0 (INSET)		228
	XL-GH03-48-8 (HALF OVERLAY)		228
	XL-GH01-250 (CLAMP FIT)	<b>STAINLESS 304 STEEL</b>	229
	XL-GH01-600 (CLAMP FIT)	<b>STAINLESS 304 STEEL</b>	229

**CONCEALED HINGES**

Picture	Item No.		Page
	H95TS (CLIP-ON)		230
	H95TM (CLIP-ON)		231
	HT-160T (CLIP-ON)		232
	HG-YS65C (DETENT, W/STAY)	<b>STAINLESS 304 STEEL</b>	233
	304B-46/19, C46/19 (19mm OVERLAY)	<b>STAINLESS 304 STEEL</b>	234
	304B-46/14, C46/14 (14mm OVERLAY)	<b>STAINLESS 304 STEEL</b>	234
	304B-46/9, C46/9 (9mm OVERLAY)	<b>STAINLESS 304 STEEL</b>	235
	304B-P3A, P4A32, P4A/32-3W (MOUNTING PLATE)	<b>STAINLESS 304 STEEL</b>	235
	RK-50	<b>STAINLESS 304 STEEL</b>	236
	I-66, I-90		236
	R SERIES		237
	HES3D-190 (3WAY ADJUSTABLE)		238

TABLETOP HINGES

Picture	Item No.	Page
	SMH-83	239
	MA-5	239
	HG-MH (PIANO HINGE)	240

PIANO HINGES

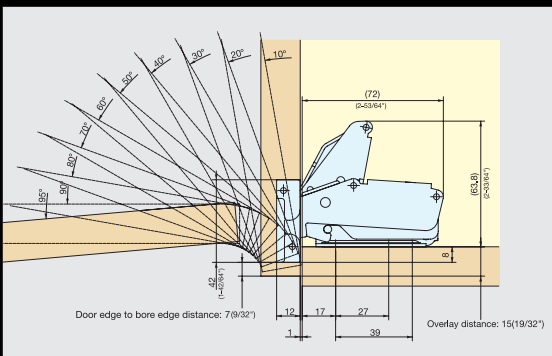
Picture	Item No.	Page
	LSD	241
	LSN	241
	HG-MH (TABLETOP HINGE)	240

DROP HINGES

Picture	Item No.	Page
	SDH-001	240

# Motion DesignTec

Controlled Motion



**Movement**

- Soft Close
- Free Stop
- Detent
- Lift Assist

**Multi-Axis Opening Travel**

- Concealed
- Lateral
- Swing-Up Hinges

**Easy Installation & Adjustments**

- Clip-on
- Temp Lock
- Snap-In

**TORQUE HINGES**

Picture	Item No.	Torque (lbs-inch)	Torque (lbs-inch)													Page
			0	5	10	15	20	25	30	35	40	45	50	55	60	
	HG-TS	<b>SUS</b> 3.1 - 13.3	[Yellow bar from 5 to 15]													216
	HG-T30S15	<b>SUS</b> Tilting: 26.5 Swiveling: 13.0	[Yellow squares at 26.5 and 13.0]													214
	HG-T70S30	<b>SUS</b> Tilting: 62.0 Swiveling: 26.6	[Yellow squares at 62.0 and 26.6]													215
	SFTH	4.3 - 49.9	[Yellow bar from 5 to 50]													217
	SK-T-ZA-1CR	13.0 - 26.0	[Yellow bar from 15 to 25]													217
	HG-IT	21.7 - 60.8	[Yellow bar from 25 to 60]													218
	HG-TA	17.7 - 39.8	[Yellow bar from 20 to 40]													219
	HG-TB	17.7 - 39.8	[Yellow bar from 20 to 40]													219

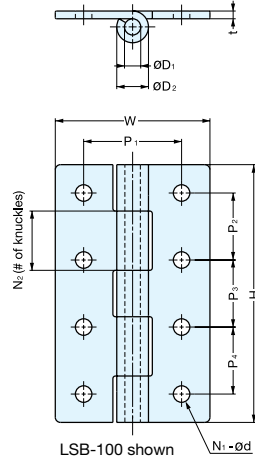
**SOFT-CLOSE DAMPENING HINGES**

Picture	Item No.	Torque (lbs-inch)	Torque (lbs-inch)													Page
			0	5	10	15	20	25	30	35	40	45	50	55	60	
	HG-JHM16	17.4 - 43.4	[Yellow bar from 20 to 45]													220
	HG-JHM20	53 - 70.8	[Yellow bar from 55 to 70]													221
	HG-JH	27 - 61	[Yellow bar from 30 to 60]													222
	HG-JH14-50	26 - 44	[Yellow bar from 25 to 45]													222
	HG-JHW, HG-JHWG	53 - 124	[Yellow bar from 55 to 124]													223

# BUTT HINGE



## LSA, LSB



• With or without screw holes type available.

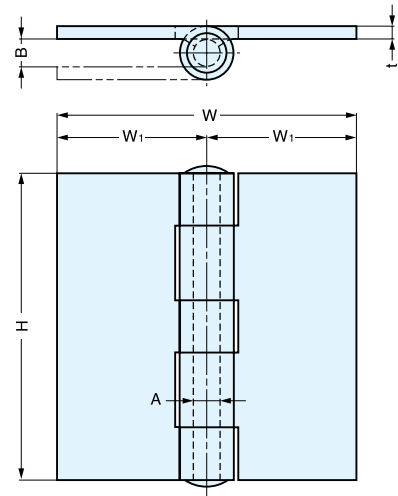
Material	Finish
304 Stainless Steel	Mirror

Item No.	Holes	H	W	P <sub>1</sub>	P <sub>2</sub>	P <sub>3</sub>	P <sub>4</sub>	t	d	D <sub>1</sub>	(D <sub>2</sub> )	N <sub>1</sub>	N <sub>2</sub>	Door Weight (kg/pair)	Weight (g)	Box (pcs)	Carton (pcs)	
LSA-40	Without Holes	40 (1-37/64")	35 ( 1-3/8" )	-	-	-	-	1.5	-	3	6.3	-	3	6 (13 lbs/pair)	25	20	500	
LSA-50		50 (1-31/32")		-	-	-	-		-					8 (17 lbs/pair)	30			
LSA-65		65 (2-9/16")	50 (1-31/32")	-	-	-	-	2	-	4.5	8.8	-	5	13 (28 lbs/pair)	66	10	100	
LSA-75		75 (2-61/64")		-	-	-	-		15 (33 lbs/pair)					76				
LSA-90		90 (3-35/64")		60 (2-23/64")	-	-	-	-	3	-	6	12.3	-	-	25 (55 lbs/pair)	190	10	100
LSA-100		100 (3-15/16")			-	-	-	-		30 (66 lbs/pair)					200			
LSB-40	With Holes	40 (1-37/64")	35 ( 1-3/8" )	22	26	-	-	1.5	3.2	3	6.3	4	3	6 (13 lbs/pair)	25	20	500	
LSB-50		50 (1-31/32")		34	-	-	4.3		8 (17 lbs/pair)					30				
LSB-65		65 (2-9/16")	50 (1-31/32")	30	23	23	-	2	4.5	8.8	-	6	5	13 (28 lbs/pair)	64	10	100	
LSB-75		75 (2-61/64")		27	27	-	5.3		15 (33 lbs/pair)					74				
LSB-90		90 (3-35/64")		60 (2-23/64")	35	35	-	-	3	6.4	6	12.3	8	-	25 (55 lbs/pair)	180	10	100
LSB-100		100 (3-15/16")			26	26	26	30 (66 lbs/pair)		195								

# STAINLESS STEEL WELD-ON BUTT HINGE



## LSK



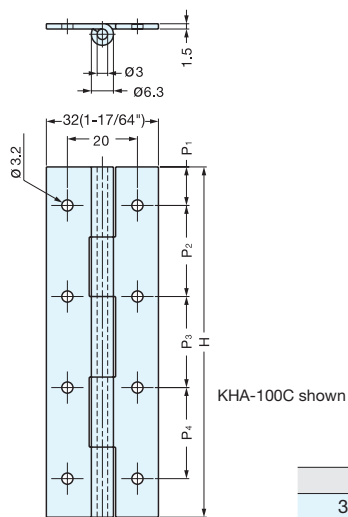
Material	Finish
304 Stainless Steel	Satin

Item No.	H	W <sub>1</sub>	W	A	B	t	Weight (g)	Box (pcs)	Carton (pcs)
LSK-1157-1	51 ( 2" )	25	50 ( 2" )	6	6	2.5	76	10	250
LSK-1157-2	64 (2-1/2")	32	64 ( 2-1/2" )	7	7	3	141		150
LSK-1157-3	76 ( 3" )	37	74 (2-15/16")				188		100
LSK-1157-4	89 (3-1/2")	43.5	87 ( 3-3/8" )	8	8		257		80
LSK-1157-5	101.6 ( 4" )	49.5	99 ( 3-7/8" )			417	50		
LSK-1157-6	127 ( 5" )	59.5	119 (4-43/64")	11	11	4	681	6	30
LSK-1157-7	152 ( 6" )	71.5	143 ( 5-5/8" )	12	12		928	4	20

# BUTT HINGE



# KHA



KHA-100C shown

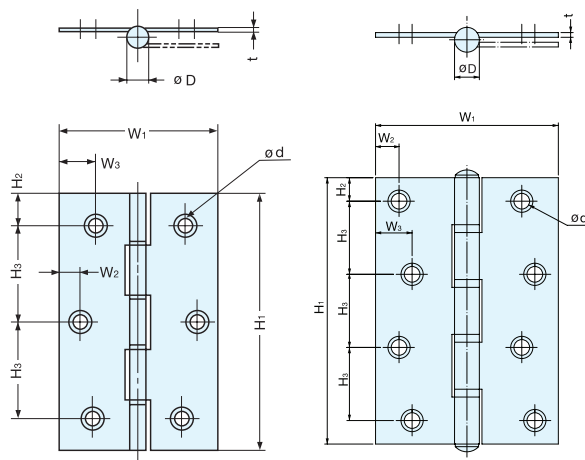
Material	Finish
304 Stainless Steel	Polished

Item No.	H	P <sub>1</sub>	P <sub>2</sub>	P <sub>3</sub>	P <sub>4</sub>	Knuckles	Weight (g)	Box (pcs)	Carton (pcs)
KHA-25C	25 ( 63/64" )	6	13	-	-	3	13	200	800
KHA-30C	30 ( 1-3/16" )	7	16	-	-		16		
KHA-40C	40 (1-37/64")	8	24	-	-		21	150	600
KHA-50C	50 (1-31/32")	10	30	-	-		26	100	400
KHA-60C	60 (2-23/64")	8	22	22	-	31			
KHA-65C	65 ( 2-9/16" )	8.5	24	24	-	5	34	50	200
KHA-75C	75 (2-61/64")	9.5	28	28	-		39		
KHA-80C	80 ( 3-5/32" )	10	30	30	-		42		
KHA-90C	90 (3-35/64")		35	35	-		47		
KHA-100C	100 (3-15/16")	11	26	26	26		52		

# BUTT HINGE



# D-S



D-S-51-89A

D-S-102A/127A

• Stainless steel hinge with polyacetal bushing.

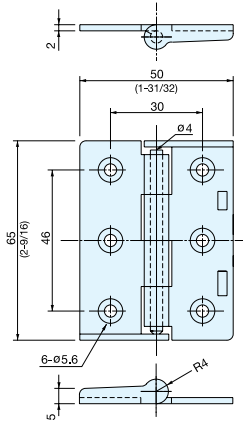
Part Name	Material	Finish
Body	304 Stainless Steel	Satin
Bushing	Polyacetal	Natural

Item No.	H <sub>1</sub>	H <sub>2</sub>	H <sub>3</sub>	W <sub>1</sub>	W <sub>2</sub>	W <sub>3</sub>	D	t	d	Knuckles	Holes	Weight (g)	Box (pcs)	Carton (pcs)
D-S-51A	51 ( 2-1/64" )	7.5	36	39 ( 1-17/32" )	-	7	6.2	1.3	4.2	3	4	27.4	20	1000
D-S-64A	64 ( 2-33/64" )	7	25	42.5 ( 1-43/64" )	6	8			5					
D-S-76A	76 ( 2-63/64" )	9	29	50 ( 1-31/32" )	7	9	7.4	1.5	5.2	5	6	59.5	10	480
D-S-89A	89 ( 3-1/2" )	10.5	34	56.5 ( 2-7/32" )	7.5	10.5			9			1.7		
D-S-102A	102 ( 4-1/64" )	9	28	70 ( 2-3/4" )	9	14	9.5	1.8	6	5	8	132.5	6	200
D-S-127A	127 ( 5" )	11	35	82 ( 3-15/64" )	10.5	16						11.5		

# BUTT HINGE



## HG-BF1



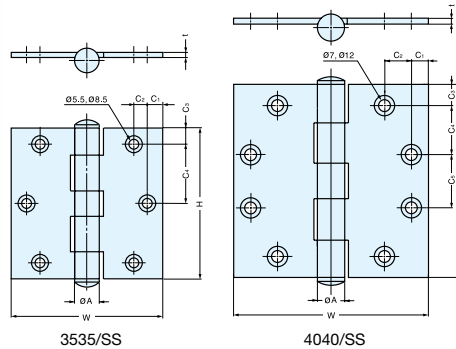
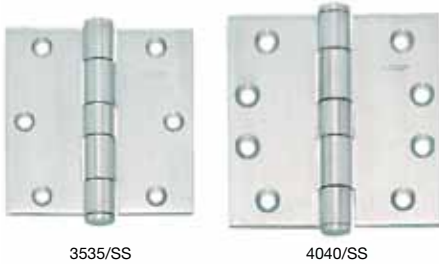
• Rim on edges prevents pin removal.

Item No.	Weight (g)	Box (pcs)	Carton (pcs)	Material	Finish
HG-BF1	63	20	120	304 Stainless Steel	Plain

# BUTT HINGE



## 3535/SS, 4040/SS



• Door weight:  
3535/SS Max. 25kg/pair (55lbs/pair)  
4040/SS Max. 40kg/pair (88lbs/pair)

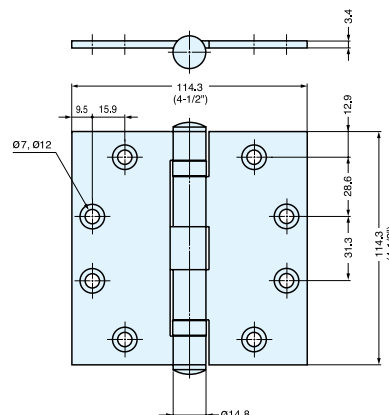
Material	Finish
304 Stainless Steel	Satin

Item No.	H	W	C <sub>1</sub>	C <sub>2</sub>	C <sub>3</sub>	C <sub>4</sub>	C <sub>5</sub>	A	t	Weight (g)	Box (pcs)	Carton (pcs)
3535/SS	89 (3-1/2")	89 (3-1/2")	9.1	8	9.1	35.4	-	14	3.0	145	2	100
4040/SS	101.6 (4")	101.6 (4")	9.5	9.5	13	25.5	24.6	14.8	3.4	195		50

# BUTT HINGE (W/BALL BEARING)



## 4545B/SS



• Ball bearing provides smooth movement.  
• Door weight: Max. 45kg/pair (99lbs/pair)

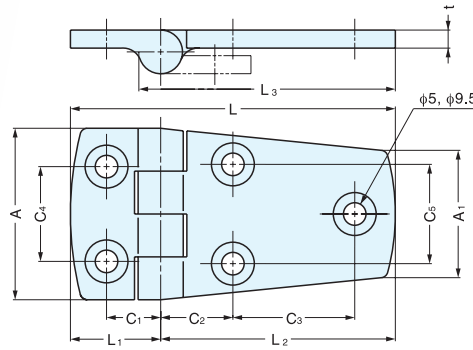
Item No.	Weight (g)	Box (pcs)	Carton (pcs)	Material	Finish
4545B/SS	420	2	50	304 Stainless Steel	Satin



# BUTT HINGE



27800, 27900



- 316 Stainless Steel construction ideal for exposed application.
- Door weight: Max. 4kg/pair (8.8lbs/pair)

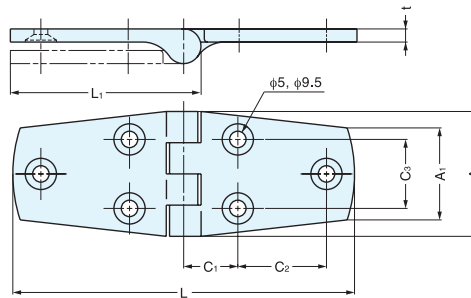
Material	Finish
316 Stainless Steel	Polished

Item No.	L	L <sub>1</sub>	L <sub>2</sub>	L <sub>3</sub>	C <sub>1</sub>	C <sub>2</sub>	C <sub>3</sub>	C <sub>4</sub>	C <sub>5</sub>	A	A <sub>1</sub>	t	Weight (g)	Box (pcs)	Carton (pcs)
27900	58	20	38	42	12	13.5	16.5	21	20	38	28	4	70	20	100
27800	72		52	57		16	27	22	21				85		

# BUTT HINGE



28000, 28500



- 316 Stainless Steel construction ideal for exposed application.
- Door weight: Max. 4kg/pair (8.8lbs/pair)

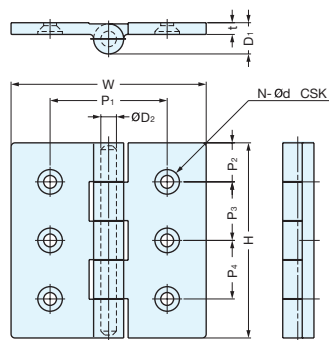
Material	Finish
316 Stainless Steel	Polished

Item No.	L	L <sub>1</sub>	C <sub>1</sub>	C <sub>2</sub>	C <sub>3</sub>	A	A <sub>1</sub>	t	Weight (g)	Box (pcs)	Carton (pcs)
28500	74	42	13	17	20	38	28	4	85	20	100
28000	104	57	16.5	27	21				115		

# BUTT HINGE



LSF



- 316 Stainless Steel construction ideal for exposed application.

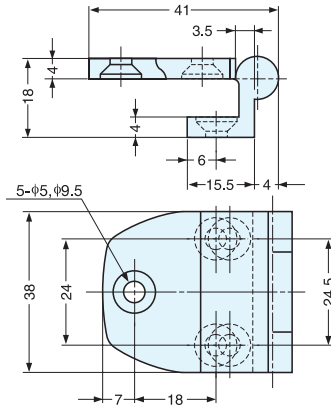
Material	Finish
316 Stainless Steel	Polished

Item No.	H	W	P <sub>1</sub>	P <sub>2</sub>	P <sub>3</sub>	P <sub>4</sub>	t	D <sub>1</sub>	φD <sub>2</sub>	Knuckles	N	d	Weight (g)	Box (pcs)	Carton (pcs)
LSF-50	50	50	35	15	20	-	5	14	6	3	4	φ4.4, φ8.6	110	20	100
LSF-65	65	65	40		35	-						φ5.6, φ10.6			
LSF-75	75	75	50	17.5	40	-	6	16	8	5	6	φ6.6, φ12.6	305	10	50
LSF-100	100	100	60	20	30	30									

## BUTT HINGE



**28100**



- 316 Stainless Steel construction ideal for exposed application.
- Door weight: Max. 4kg/pair (8.8lbs/pair)

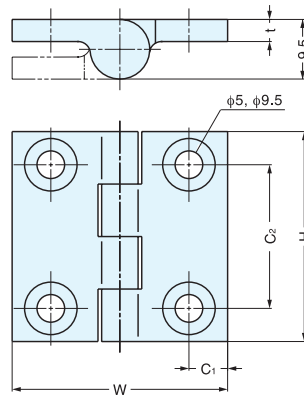
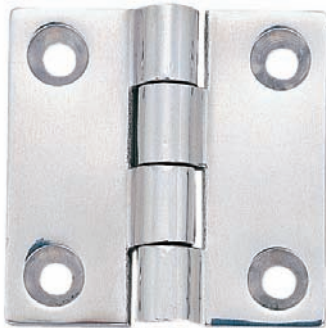
Material	Finish
316 Stainless Steel	Polished

Item No.	Weight (g)	Box (pcs)	Carton (pcs)
28100	78.5	20	100

## BUTT HINGE



**28300, 28400**



- 316 Stainless Steel construction ideal for exposed application.
- Door weight: Max. 4kg/pair (8.8lbs/pair)

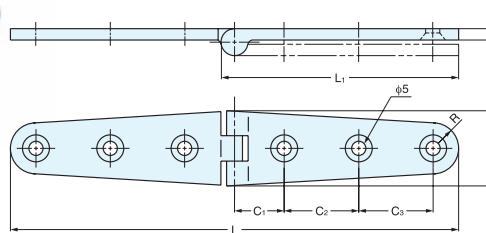
Material	Finish
316 Stainless Steel	Polished

Item No.	H	W	t	C <sub>1</sub>	C <sub>2</sub>	Weight (g)	Box (pcs)	Carton (pcs)
28300	38	39	4	7	26	55	20	100
28400	50	50		7.5	34	90		

## LEAF HINGE



**50704, 50706**



- 316 Stainless Steel construction ideal for exposed application.
- Door weight: Max. 2.6kg/pair (5.7lbs/pair)

Material	Finish
316 Stainless Steel	Polished

Item No.	L	L <sub>1</sub>	C <sub>1</sub>	C <sub>2</sub>	C <sub>3</sub>	A	R	t	Holes	Weight (g)	Box (pcs)	Carton (pcs)
50704	105	57	17.5	25	-	26.5	9	4	4	75	20	100
50706	158	84	19.5		25	26.5			6	115		

# BUTT HINGE (W/SPRING)



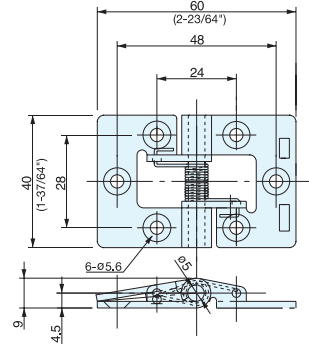
## HG-BF3



SO type (Opening Tension)

SC type (Closing Tension)

- Spring hinge to hold door.
- Either closed or open available.



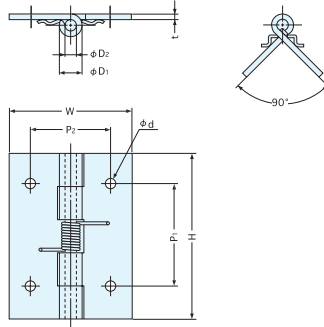
Item No.		Tension Direction	Weight (g)	Box (pcs)	Carton (pcs)
Left	Right				
HG-BF3-2L-SO	HG-BF3-2R-SO	Opening Tension	41	20	120
HG-BF3-2L-SC	HG-BF3-2R-SC	Closing Tension			

Material	Finish
304 Stainless Steel	Plain

# BUTT HINGE (W/SPRING)



## HG-SH



- Designed to keep doors closed.

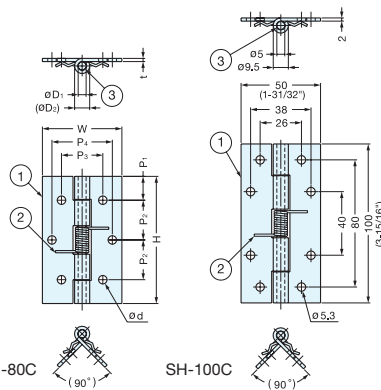
Material	Finish
304 Stainless Steel	Plain

Item No.	H	W	P <sub>1</sub>	P <sub>2</sub>	D <sub>1</sub>	D <sub>2</sub>	d	t	Spring Load (g)	Weight (g)	Box (pcs)	Carton (pcs)
HG-SH20C	20 ( 25/32\" )	14 ( 35/64\" )	-	-	2.2	1	-	0.5	500	5	800	3200
HG-SH25C	25 ( 63/64\" )	32 ( 1-17/64\" )	14	20	5.8	3	3.2	1.2	550	10	300	1200
HG-SH38C	38 ( 1-1/2\" )	32 ( 1-17/64\" )	26		1200			20	200	800		
HG-SH51C	51 ( 2-1/64\" )	38 ( 1-1/2\" )	32	25	6.5	-	-	1.5	800	35	130	520

# BUTT HINGE (W/SPRING)



## SH



SH-60C, SH-80C

SH-100C

- Designed to keep doors closed.

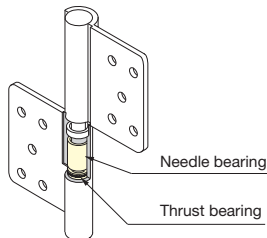
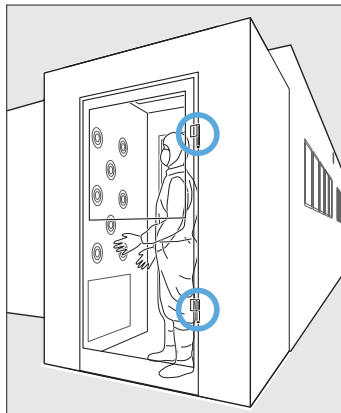
No.	Part Name	Material	Finish
①	Body	304 Stainless Steel	Polished
②	Spring		-
③	Hinge Pin		-

Item No.	H	W	t	P <sub>1</sub>	P <sub>2</sub>	P <sub>3</sub>	P <sub>4</sub>	D <sub>1</sub>	(D <sub>2</sub> )	d	Weight (g)	Box (pcs)	Carton (pcs)
SH- 60C	60 (2-23/64\" )	40 (1-37/64\" )	1.5	10	20	26	26	5	8.5	4.3	44	120	1200
SH- 80C	80 ( 3-5/32\" )	50 (1-31/32\" )	2	15	25		38		9.5	5.3	86	80	800
SH-100C	-	-	-	-	-	-	-	-	-	-	110	100	1000

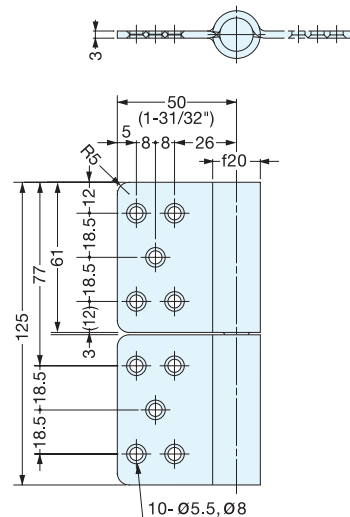
# HEAVY DUTY CLEAN ROOM HINGE

STAINLESS  
304  
STEEL

# HG-CV127



- No metal-to-metal contact.
- Special bearings minimize particles.
- Successfully passed 200,000 cycle test at the following door size.
  - Door Weight: MAX.100kg/pair (220lbs/pair)
  - Door Height: MAX.2,000mm (78-3/4")
  - Door Width: MAX.900mm (35-7/16")

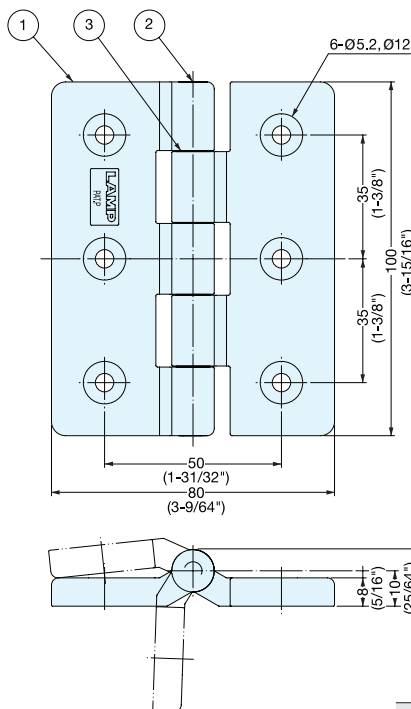


Item No.	Weight (g)	Box (pcs)	Carton (pcs)
HG-CV127	388	5	50

Material	Finish
304 Stainless Steel	Satin

# CLEAN ROOM HINGE

# HG-P100



- Made with PVC material:
  - Ideal for semiconductor manufacturing machinery and transparent applications.
  - Weather proof, chemical proof
- Environmentally friendly - Lead free.
- Titanium pin is used.

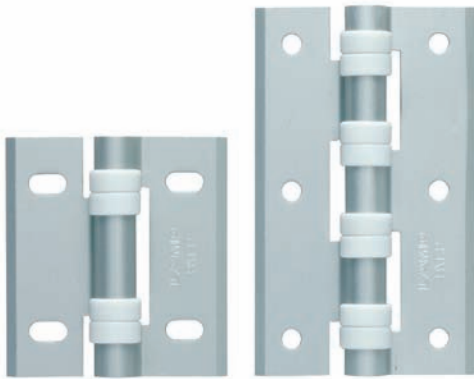
Item No.	Weight (g)	Box (pcs)	Carton (pcs)
HG-P100	74	-	-

Material	Finish
Body	PVC
Hinge Pin	Titanium

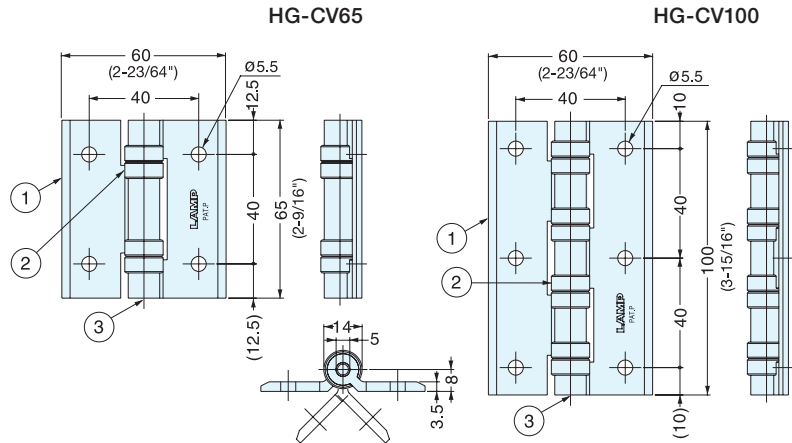
# CLEAN ROOM HINGE (W/BUSHING)



## HG-CV



- No metal-to-metal contact.
- Polyacetal bushings minimize particles.
- Ideal for cleanroom application.
- Door weight:  
HG-CV- 65 Max. 8kg/pair (17.6lbs/pair)  
HG-CV-100 Max. 13kg/pair (28.6lbs/pair)
- Door size: Max. W600xH700  
(W23-5/8"xH27-9/16")



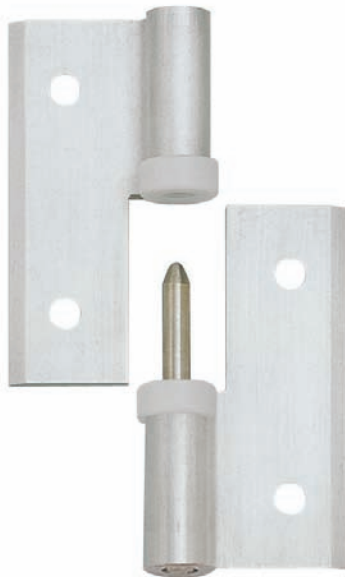
Item No.	Weight (g)	Box (pcs)	Carton (pcs)
HG-CV65	60	20	240
HG-CV100	100		160

No.	Part Name	Material	Finish
①	Body	Aluminum	Anodized
②	Bushing	Polyacetal	White
③	Hinge Pin	303 Stainless Steel	-

# CLEAN ROOM HINGE (W/BUSHING)

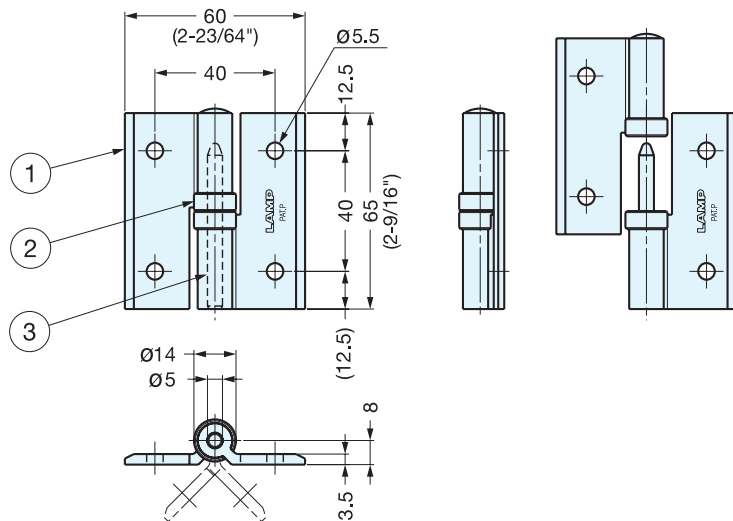


## HG-CV65N



Left-Hand Opening

- No metal-to-metal contact.
- Polyacetal bushings minimize particles.
- Ideal for cleanroom application.



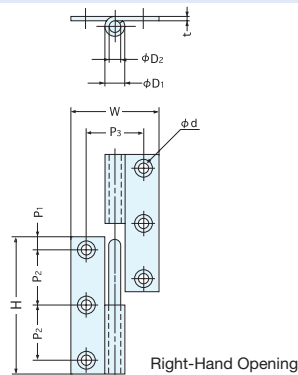
Item No.	Type	Weight (g)	Box (pcs)	Carton (pcs)
HG-CV65NR	Right Hand	48	20	200
HG-CV65NL	Left Hand			

No.	Part Name	Material	Finish
①	Body	Aluminum	Anodized
②	Bushing	Polyacetal	White
③	Hinge Pin	303 Stainless Steel	-

## LIFT-OFF HINGE



**KN**



- Handed: Specific left and right hand mounting.

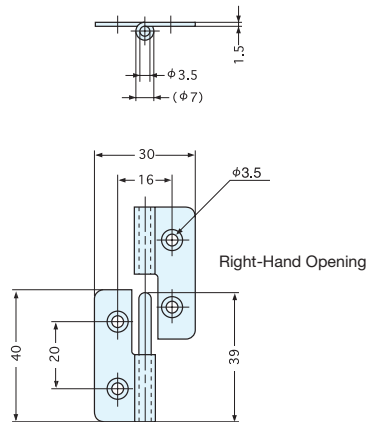
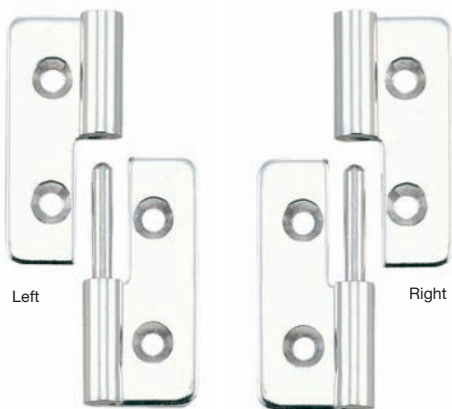
Material	Finish
304 Stainless Steel	Polished

Item No.		H	W	P <sub>1</sub>	P <sub>2</sub>	P <sub>3</sub>	D <sub>1</sub>	D <sub>2</sub>	d	t	Weight (g)	Box (pcs)	Carton (pcs)
Left	Right												
KN-50L/SS	KN-50R/SS	50	32	5	20	21	7.5	4	3.2	1.5	32	100	400
KN-64L/SS	KN-64R/SS	64	36	8	24	24							
KN-75L/SS	KN-75R/SS	75	38	7.5	30		8.5			2	64	50	200

## LIFT-OFF HINGE



**NH-40**



- Handed: Specific left and right hand mounting.

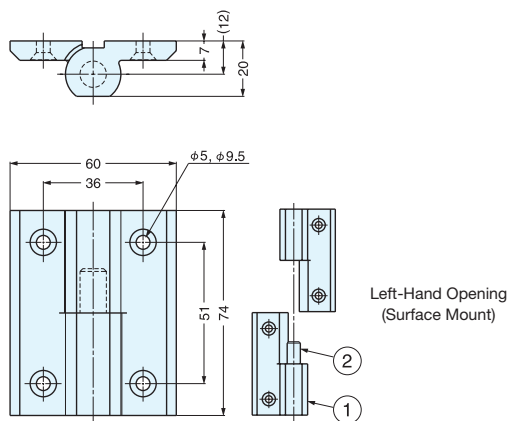
Material	Finish
304 Stainless Steel	Polished

Item No.		t	Weight (g)	Box (pcs)	Carton (pcs)
Left	Right				
NH-40L/SS	NH-40R/SS	1.5	21	150	600

## LIFT-OFF HINGE

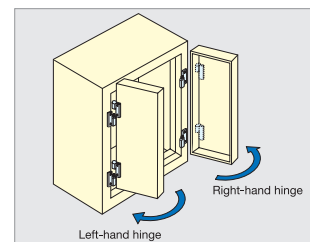


**WB-901380, 901381**



- Polyamide lift-off hinge.
- Designed for surface mount.
- Handed: Specific left and right hand mounting.

No.	Part Name	Material	Finish
①	Body	Fiberglass Reinforced Polyamide	Black
②	Hinge Pin	303 Stainless Steel	Plain



Item No.		Weight (g)	Box (pcs)
Left	Right		
WB-901381	WB-901380	54	100

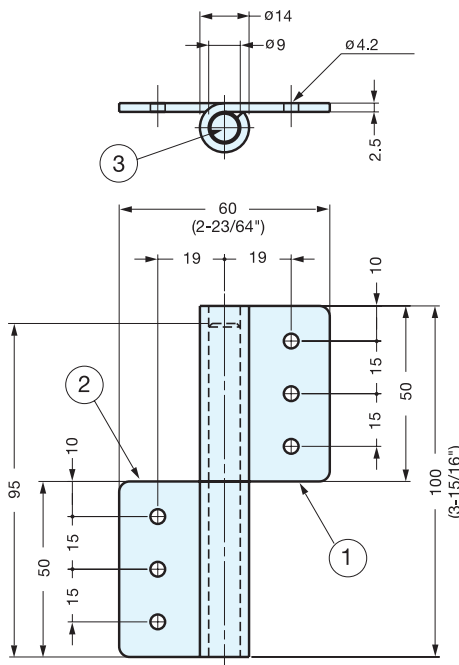
# LIFT-OFF HINGE



# LSX-100



Right-Hand Opening



- Handed: Specific left and right hand mounting.

Item No.		Weight (g)	Box (pcs)	Carton (pcs)
Left	Right			
LSX-100L	LSX-100R	170	10	50

No.	Part Name	Material	Finish
①	Body A	304 Stainless Steel	Mirror
②	Body B		
③	Shaft		-

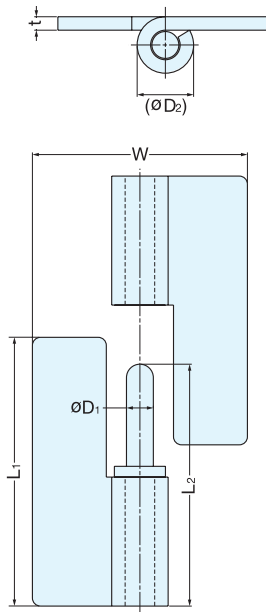
# LIFT-OFF HINGE (WELD-ON)



# HNH



Right-Hand Opening



- Weld-on type lift-off hinge.
- Handed: Specific left and right hand mounting.

Material	Finish
304 Stainless Steel	Mirror

Item No.		L <sub>1</sub>	L <sub>2</sub>	W	D <sub>1</sub>	(D <sub>2</sub> )	t	Weight (g)	Box (pcs)	Carton (pcs)
Left	Right									
HNH-50CL	HNH-50CR	50 (1-31/32")	45	40 (1-37/64")	5	10.5	2.5	62	30	240
HNH-65CL	HNH-65CR	65 (2-9/16")	60	50 (1-31/32")				95	20	160
HNH-75CL	HNH-75CR	75 (2-61/64")	70	70 (2-3/4")	6	12	3	180	10	80
HNH-100CL	HNH-100CR	100 (3-15/16")	90	82 (3-15/64")	8	16	4	335	5	40

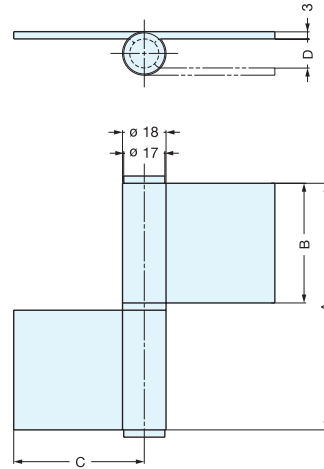
## LIFT-OFF HINGE (WELD-ON)



**S-6166-2**



- Weld-on type stainless steel lift-off hinge.
- Handed: Specific left and right hand mounting.
- Door weight: Max. 40kg/pair (88lbs/pair)



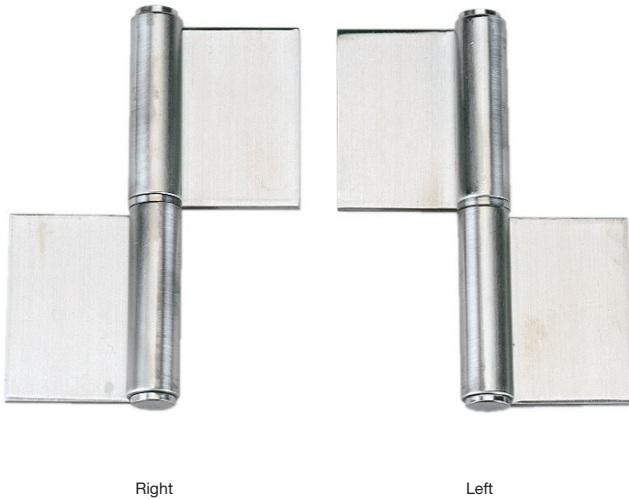
Material	Finish
304 Stainless Steel	Satin

Item No.		A	B	C	D	Weight (g)	Box (pcs)	Carton (pcs)
Left	Right							
S-6166-2-L	S-6166-2-R	102 (4-1/64")	49.5 (1-61/64")	55 (2-5/32")	12 (15/32")	300	12	60

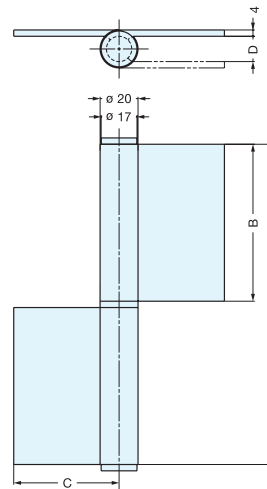
## LIFT-OFF HINGE (WELD-ON)



**S-6166-6**



- Weld-on type stainless steel lift-off hinge.
- Handed: Specific left and right hand mounting.
- Door weight: Max. 90kg/pair (198lbs/pair)



Material	Finish
304 Stainless Steel	Satin

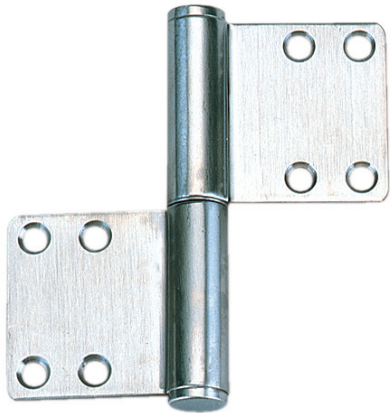
Item No.		A	B	C	D	Weight (g)	Box (pcs)	Carton (pcs)
Left	Right							
S-6166-6-L	S-6166-6-R	152 (5-63/64")	74.5 (2-15/16")	55 (2-5/32")	12 (15/32")	570	8	40



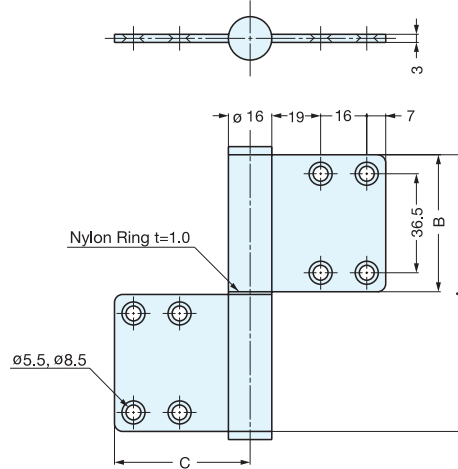
# LIFT-OFF HINGE



# S-6173-2



- Screw hole is countersunk from both sides.
- Non-Handed: Can be installed on left or right side.
- Door weight: Max. 40kg/pair (88lbs/pair)



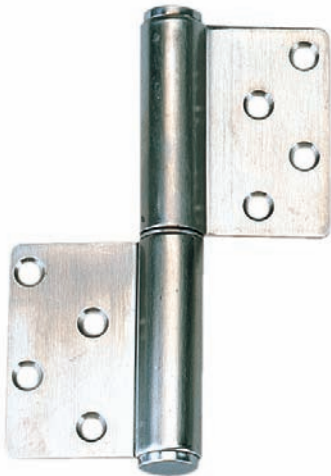
Material	Finish
304 Stainless Steel	Satin

Item No.	A	B	C	Weight (g)	Box (pcs)	Carton (pcs)
S-6173-2	102 (4-1/64")	50.5 (1-63/64")	50 (1-31/32")	240	12	60

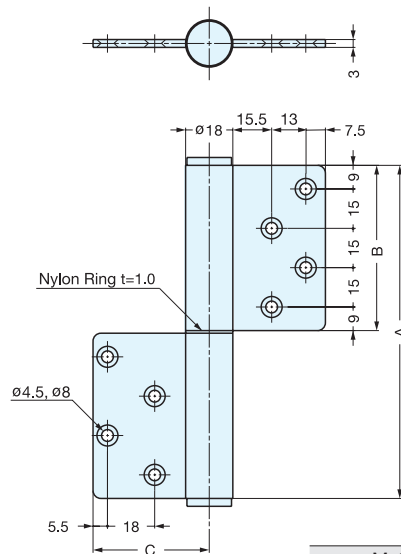
# LIFT-OFF HINGE



# S-6173-5



- Screw hole is countersunk from both sides.
- Non-Handed: Can be installed on left or right side.
- Door weight: Max. 50kg/pair (110lbs/pair)



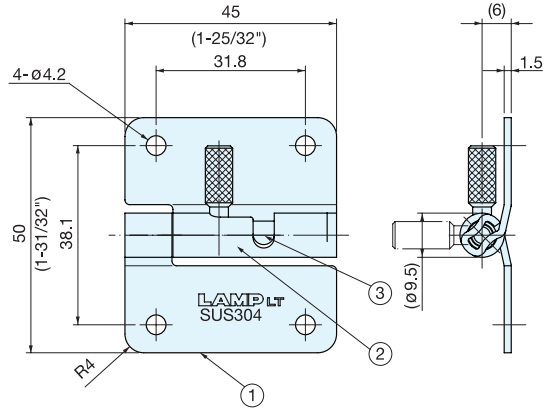
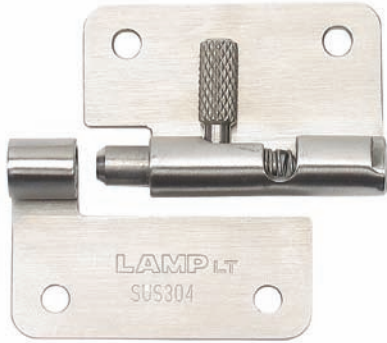
Material	Finish
304 Stainless Steel	Satin

Item No.	A	B	C	Weight (g)	Box (pcs)	Carton (pcs)
S-6173-5	127 (5")	63 (2-31/64")	45 (1-25/32")	330	8	40

# QUICK RELEASE HINGE



## HG-OT



HG-OTA45L

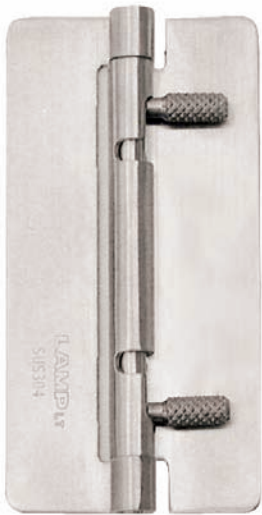
- Easy and quick to install/remove doors.
- With or without holes available.
- Non-Handed: Can be installed on left or right side.

Item No.		Holes	Weight (g)	Box (pcs)	Carton (pcs)	No.	Part Name	Material	Finish
Left	Right					①	②		
HG-OTA45L	HG-OTA45R	With screw holes	40	30	-	①	Plate	304 Stainless Steel	Satin
HG-OTB45L	HG-OTB45R	Without screw holes				②	Spring		
						③	Hinge Pin	303 Stainless Steel	

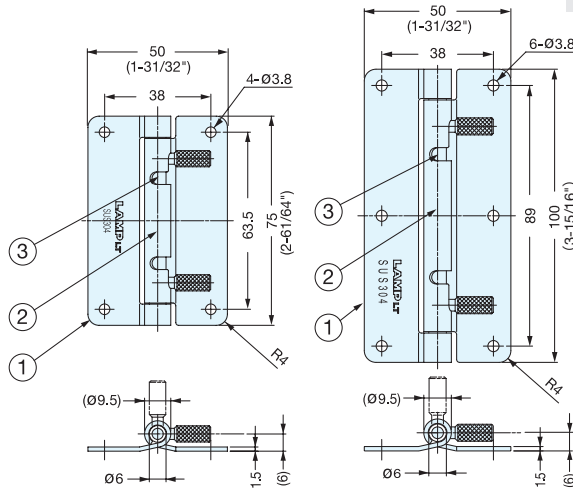
# QUICK RELEASE HINGE



## HG-OT



HG-OTB shown



HG-OTA75

HG-OTA100

- Easy and quick to install/remove doors.
- With or without holes available.

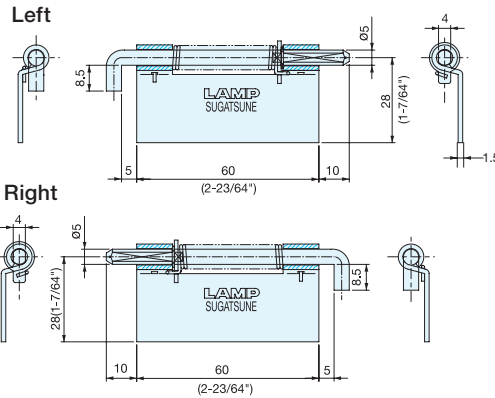


Item No.	Holes	Weight (g)	Box (pcs)	Carton (pcs)	No.	Part Name	Material	Finish
HG-OTA75	With screw holes	65	40	160	①	Plate		
HG-OTB75	Without screw holes				②	Spring		
HG-OTA100	With screw holes	80	30	120	③	Hinge Pin	303 Stainless Steel	
HG-OTB100	Without screw holes							

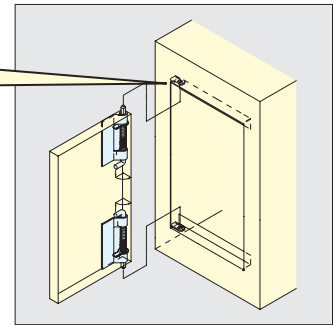
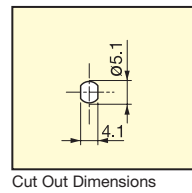
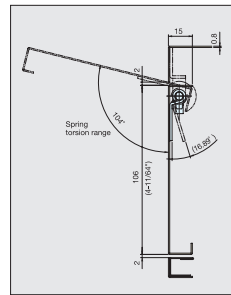
# SPRING LOADED PIVOT HINGE



## HG-PV60AC



- Spring loaded for self closing.
- Lift pin for easy door installation and removal.
- Torsion moment (Hinge closed): 0.76 kgf-cm (0.66 lb-in) per piece



Installation

Item No.	Weight (g)	Box (pcs)	Carton (pcs)
HG-PV60AC-L	38	50	200
HG-PV60AC-R			

Material	Finish
304 Stainless Steel	Plain

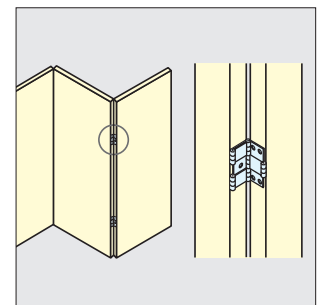
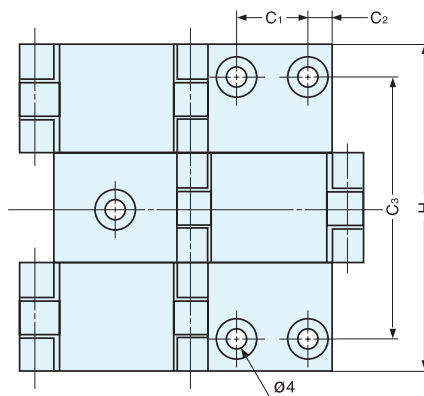
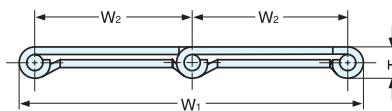
# DOUBLE ACTION HINGE



## HG-BH



- Opens 180° in both left and right direction.
- Door Size: Max. W450 x H700 (W17-23/32" x H27-9/16")
- Door weight: Max. 2.6kg/pair (5.7lbs/pair).



Installation

Material	Finish
304 Stainless Steel	Satin

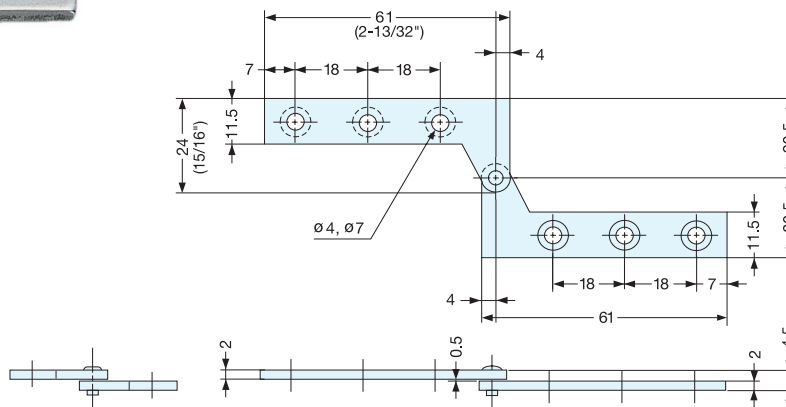
Item No.	W <sub>1</sub>	W <sub>2</sub>	T	H	C <sub>1</sub>	C <sub>2</sub>	C <sub>3</sub>	Weight (g)	Box (pcs)	Carton (pcs)
HG-BH60	64 (2-33/64")	29 (1-9/64")	5.5	60 (2-23/64")	13.5 (17/32")	4.8	47	65	20	260
HG-BH70	78 (3-5/64")	35 (1-3/8")	7.5	70 (2-3/4")		6.8	57	130	10	180
HG-BH80	94 (3-5/32")	43.2 (1-45/64")		80 (3-5/32")	22 (55/64")	6.5	66	175		120

# INSET DOOR PIVOT HINGE



PP

- Door Size: Max. W450 x H700 x t21mm (W17-23/32" x H27-9/16" x t53/64")
- Door weight: Max. 2.6kg/pair (5.7lbs/pair)



Item No.		Weight (g)	Box (pcs)	Carton (pcs)
Left	Right			
PP-L	PP-R	22	100	1000

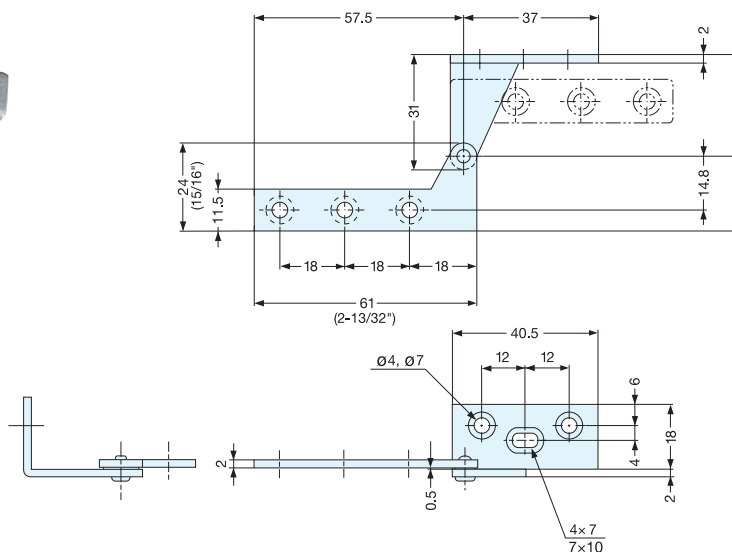
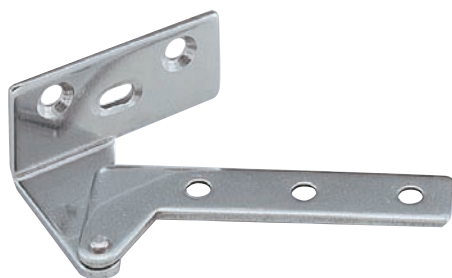
Material	Finish
430 Stainless Steel	Plain

# OVERLAY DOOR PIVOT HINGE



PL-60

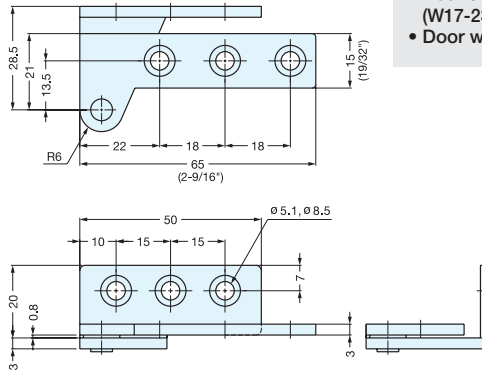
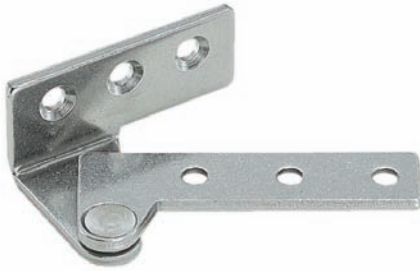
- Door Size: Max. W450 x H700mm (W17-23/32" x H27-9/16")
- Door weight: Max. 2.6kg/pair (5.7lbs/pair)



Item No.		Weight (g)	Box (pcs)	Carton (pcs)
Left	Right			
PL-60L	PL-60R	27	100	1000

Material	Finish
430 Stainless Steel	Plain

# OVERLAY DOOR PIVOT HINGE

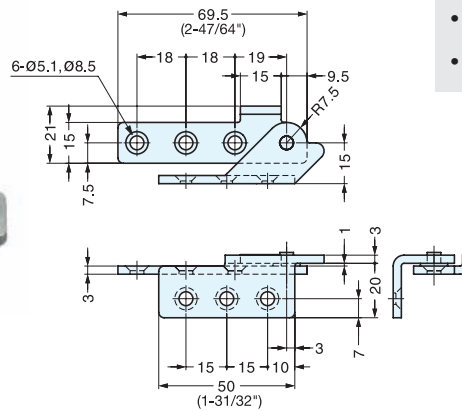
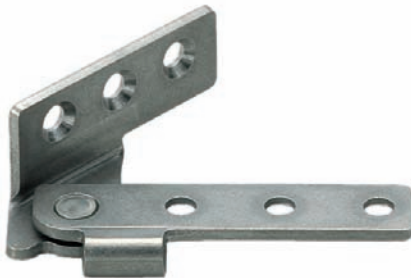

**PL-65**


- Door Size: Max. W450 x H700 x t21mm (W17-23/32" x H27-9/16" x t53/64")
- Door weight: Max. 2.6kg/pair (5.7lbs/pair)

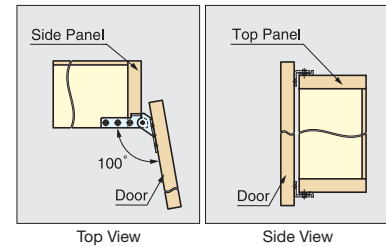
Item No.		Weight (g)	Box (pcs)	Carton (pcs)
Left	Right			
PL-65L	PL-65R	55	40	400

Material	Finish
430 Stainless Steel	Plain

# OVERLAY DOOR PIVOT HINGE


**PL-100**


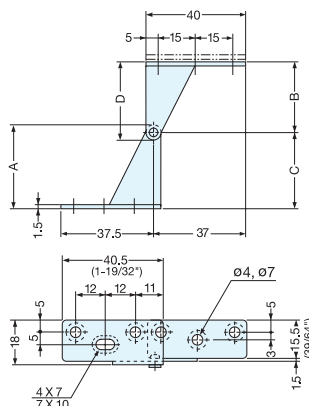
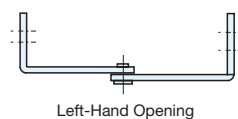
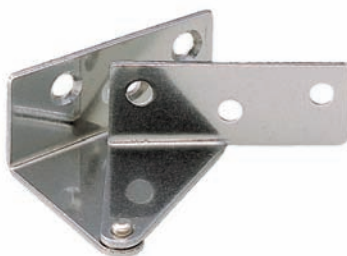
- Door Size: Max. W300 x H700mm (W11-3/16" x H27-9/16")
- Door Weight: Max. 1.8kg/pair (3.9lbs/pair)



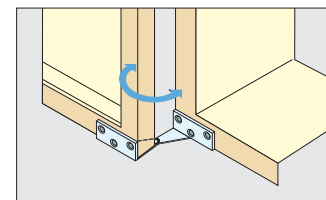
Item No.		Weight (g)	Box (pcs)	Carton (pcs)
Left	Right			
PL-100L	PL-100R	55	100	1000

Material	Finish
430 Stainless Steel	Plain

# OVERLAY DOOR PIVOT HINGE


**WP**


- Door Size: Max. W300 x H700mm (W11-3/16" x H27-9/16")
- Door weight: Max. 1.8kg/pair (3.9lbs/pair)



Installation

Item No.		A	B	C	D	Weight (g)	Box (pcs)	Carton (pcs)
Left	Right							
WP-1L	WP-1R	34	28	30.5	31	23	100	1000
WP-3L	WP-3R	28	22	24.5	25	21		

Material	Finish
430 Stainless Steel	Plain



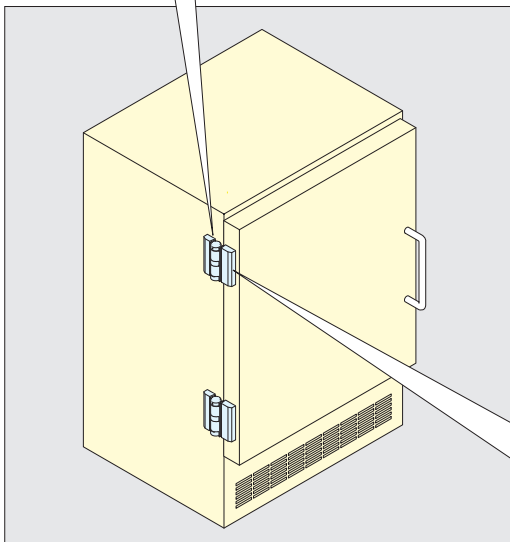
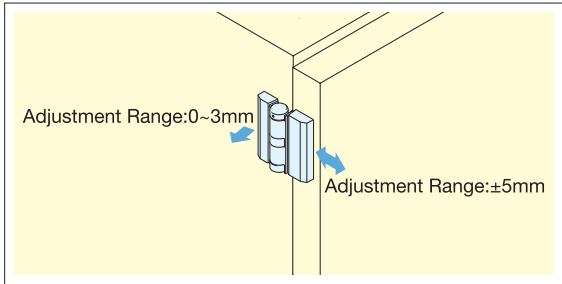
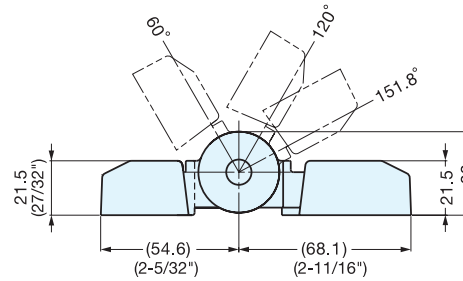
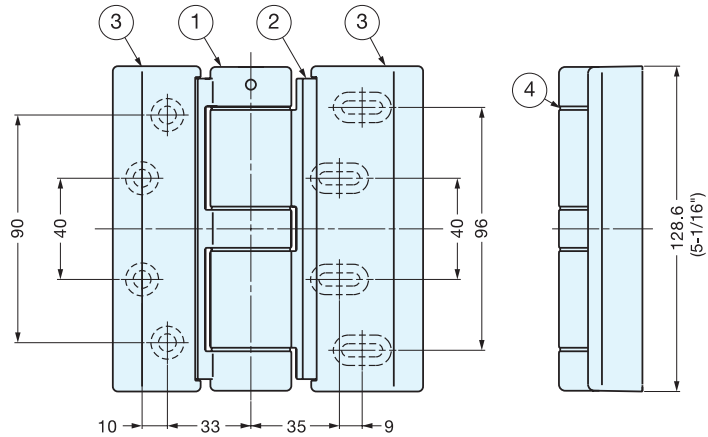
# HG-FH128

## DETENT HINGE

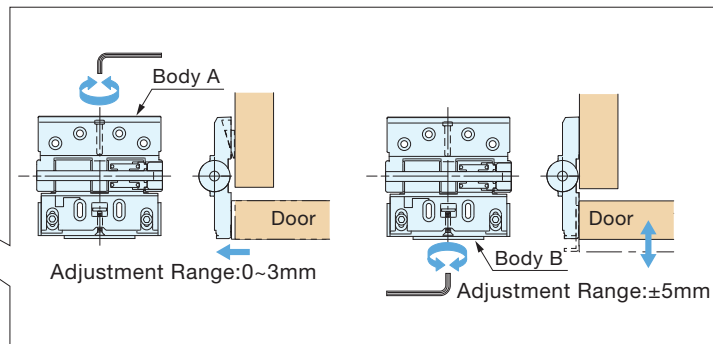
HINGES

DETENT HINGES

- Ideal for doors which need to be compressed.
- Horizontally adjustable for better compression.
- Holds doors at 60° and 120°.
- Max. Open: 152°
- Plastic washer provides smooth movement.



Installation



No.	Part Name	Material	Finish
①	Body A	Zinc Alloy	Nickel
②	Body B		
③	Cover A, B	Polycarbonate	Silver
④	Washer	Fluoroplastic	-

Item No.	Weight (g)	Box (pc)	Carton (pcs)
HG-FH128	1500	1	6

**DETENT HINGE (WITH or WITHOUT DAMPER)**



**HG-CSH63**

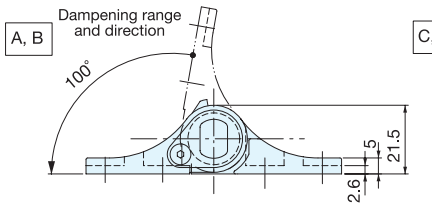
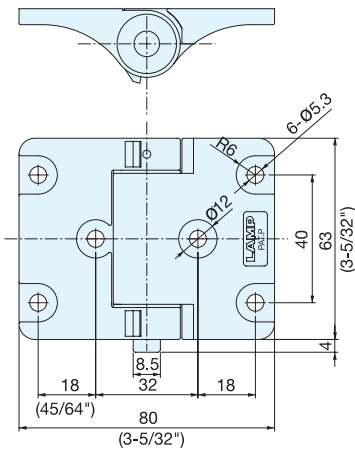


(W/Damper)

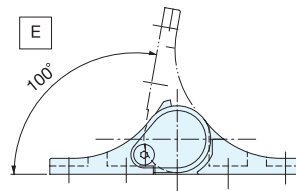
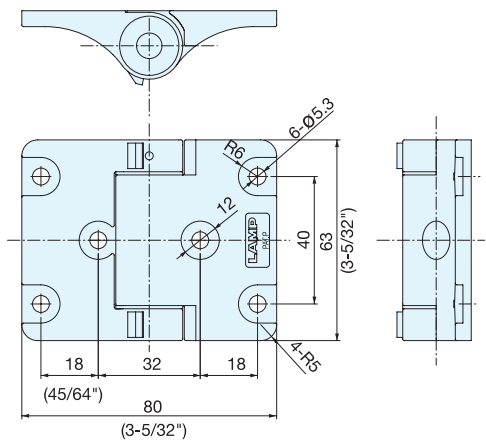
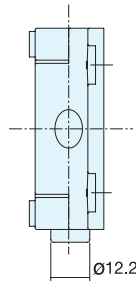


(W/Detent only)

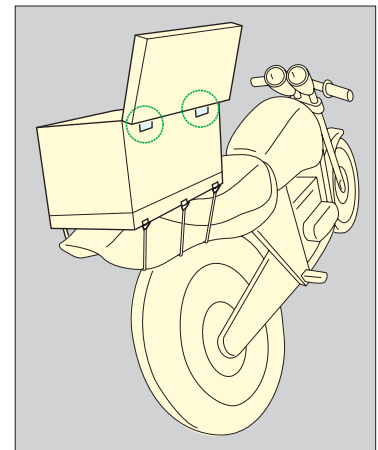
- Detent hinge with built-in damper as an option.
- Detent will hold lid in open/closed position without secondary support, and optional damper will provide soft closing.
- Operating angle: 100° (Detent at both 0° and 100°)
- Detent holding force: 10.2 kgf-cm (8.8 lbs-in)
- Damper torque range: 10.2~25.5 kgf-cm (9~22 lbs-in)/pc



(W/Damper)



(W/Detent only)



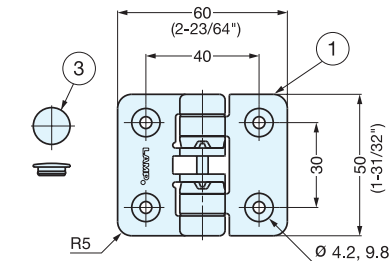
Item No.	Torque (kgf-cm)/pc	Dampening Direction	Type	Weight (g)	Box (pcs)	Carton (pcs)
HG-CSH63AH	17.3~25.5 (15~22 lbs-in)	Counter Clockwise	A	114.3	10	120
HG-CSH63AM	10.2~17.3 ( 9~15 lbs-in)		B			
HG-CSH63BH	17.3~25.5 (15~22 lbs-in)		C			
HG-CSH63BM	10.2~17.3 ( 9~15 lbs-in)	Clockwise	D	98.7		
HG-CSH63	-		E			

Material	Finish
Zinc Alloy	Silver

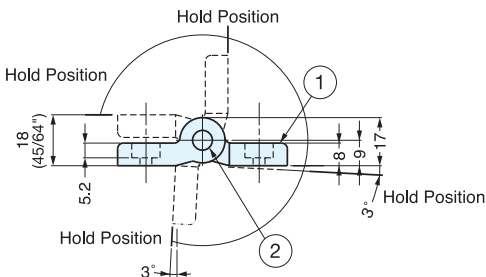
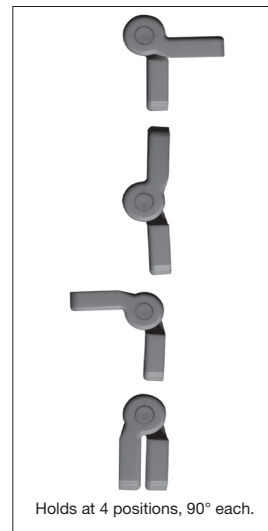
# DETENT HINGE



## HG-YJ50



- Plastic hinge holds doors at 4 different positions (90° increment) without secondary support.
- Ivory or Black available.
- Door weight: Max.1.2kg/pair (2.6lbs/pair)



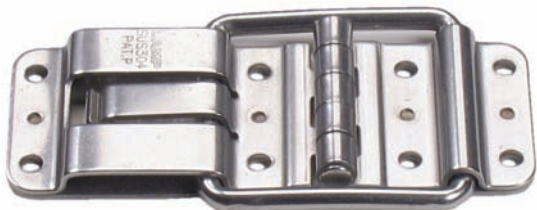
Item No.	Weight (g)	Box (pcs)	Carton (pcs)
HG-YJ50/IV	30	20	200
HG-YJ50/BL			

No.	Part Name	Material	Color
①	Body	Polycetal	Ivory/Black
②	Hinge Pin	303 Stainless Steel	Plain
③	Cap	Polypropylene	Ivory/Black

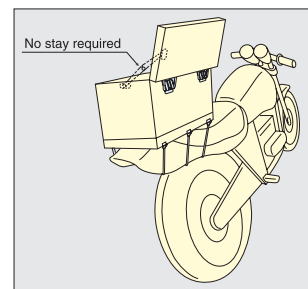
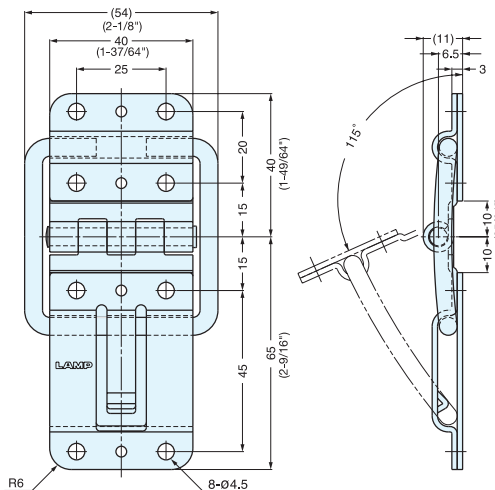
# DETENT HINGE



## HG-YC105



- Snaps in at 115° open position.
- Holds doors open without secondary support.



Item No.	Weight (g)	Box (pcs)	Carton (pcs)
HG-YC105	122	10	100

Material	Finish
304 Stainless Steel	Polished



# MICRO DETENT HINGE



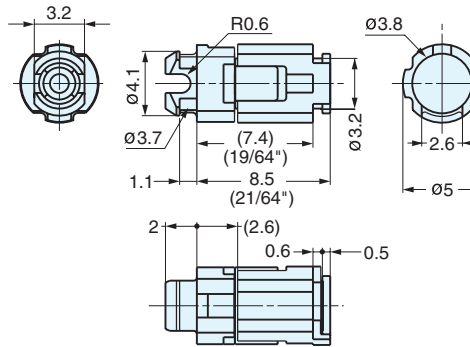
MPH

HINGES

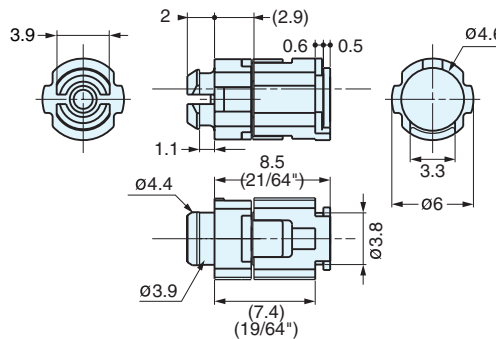
MICRO DETENT HINGES



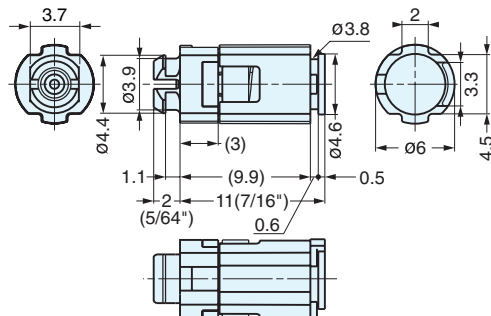
- Ultra compact detent hinge ideal for clamshell type cell phone, PDA and other foldable device.
- Designed for 160° opening.
- Detent catch in open and closed position.
- Friction torque moment provided to lightly hold device in any middle angle.
- Easy snap-in for quick assembly.
- Unhanded for easy manufacturing process.
- Passed private 100,000 open/close cycle test.
- Application: - Cell phone  
- PDA  
- Head set  
- Gaming device  
- Webcam



MPH-20-5



MPH-22



MPH-30

Item No.	Weight (g)	Carton (pcs)	Part Name	Material	Finish
MPH-20-5	0.46 (0.02 oz)	4000	Body	Polyacetal	White/Grey/Black
MPH-22	0.62 (0.02 oz)		Spindle	Steel	Chromate
MPH-30	0.98 (0.04 oz)				

# TORQUE HINGE (DUAL AXIS)

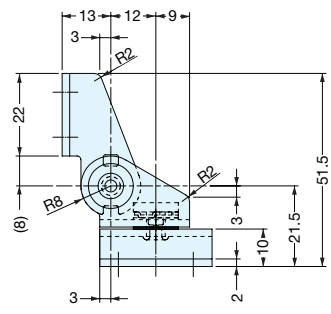
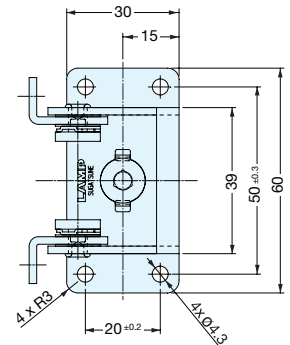
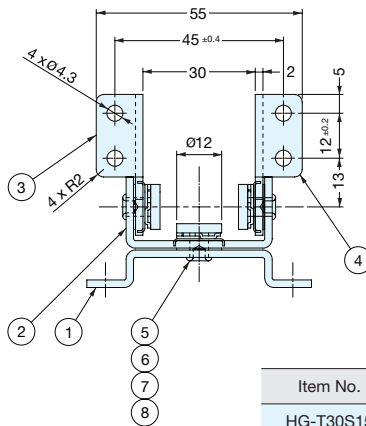
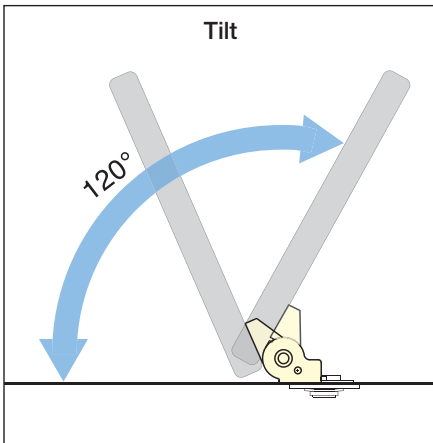
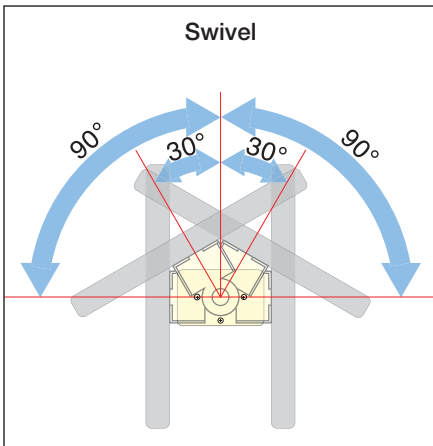


## HG-T30S15

HINGES

TORQUE HINGES

- Dual Axis: free stop at any angle in tilt & swivel.
- Provides torque stability in both directions.
- Suitable for monitor screens.



Item No.	Torque per piece (tilting)	Torque per piece (swiveling)
HG-T30S15	26.5 lbs/in ± 20%	13.0 lbs/in ± 20%

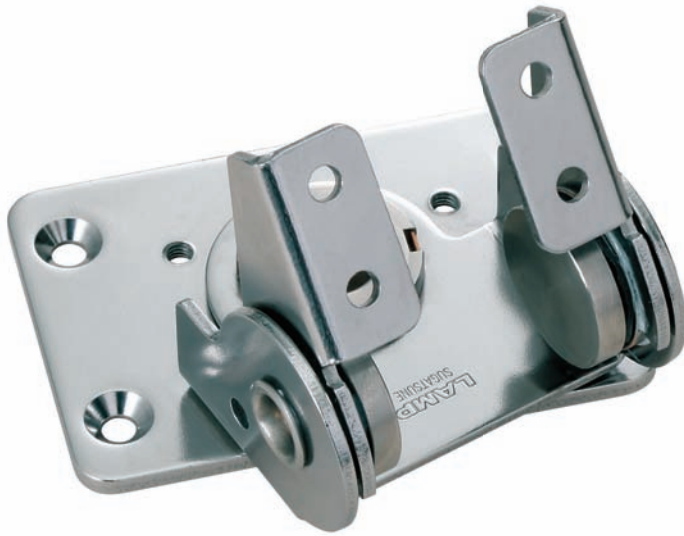
No.	Part Name	Material	Finish
①	Body	430 Stainless Steel	Polished
②	Base		
③	Bracket		
④	Shaft	303 Stainless Steel	-
⑥	Press Washer	Phosphor Bronze	Polished
⑦	Pin		
⑧	Washer	Steel	-

# TORQUE HINGE (DUAL AXIS)

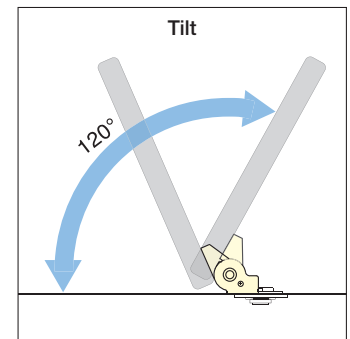
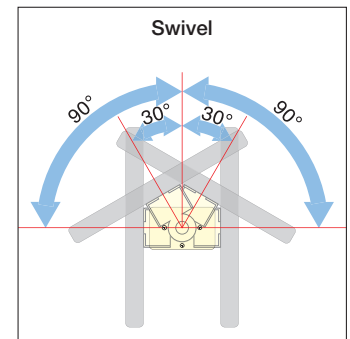
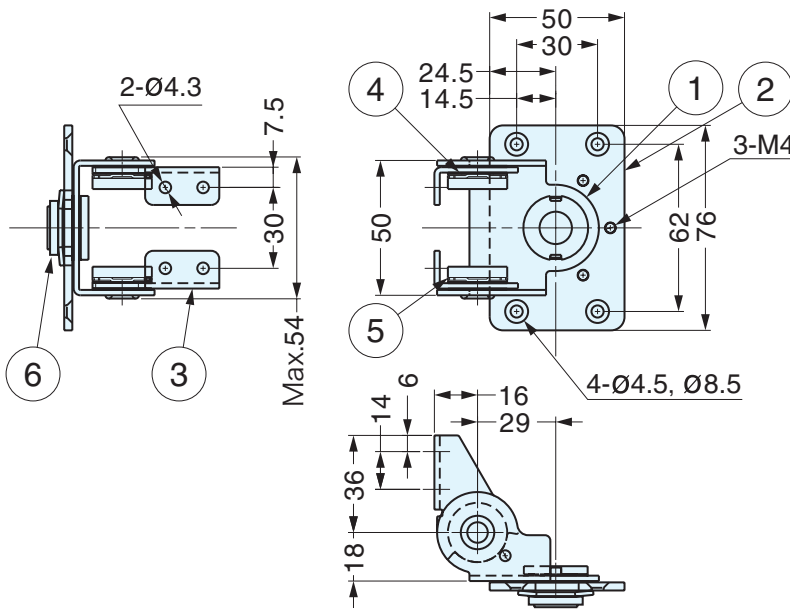
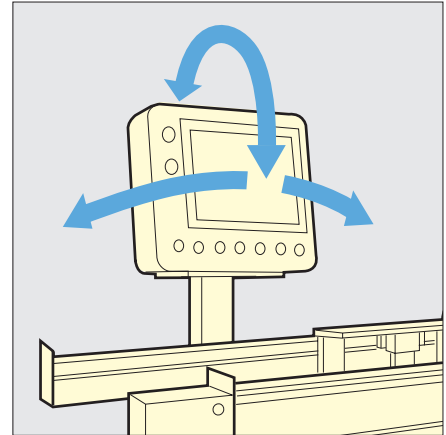


## HG-T70S30

- Dual Axis: free stop at any angle in tilt & swivel.
- Provides torque stability in both directions.
- Suitable for monitor screens.



Dual AXIS Torque Hinge



\*Angle restriction hole options with inserted pin/screw (not included).  
TILT 0-120° & SWIVEL ± 30°, ± 90°

Item No.	Torque per piece (tilting)	Torque per piece (swiveling)
HG-T70S30	62 lbs/in ± 15%	26.6 lbs/in ± 15%

No.	Part Name	Material	Finish
①	Body	430 Stainless Steel	Polished
②	Base		
③	Bracket	Steel	Plain
④	Spring Washer		
⑤	Shaft	303 Stainless Steel	Polished
⑥	Washer	430 Stainless Steel	

# STAINLESS STEEL TORQUE HINGE



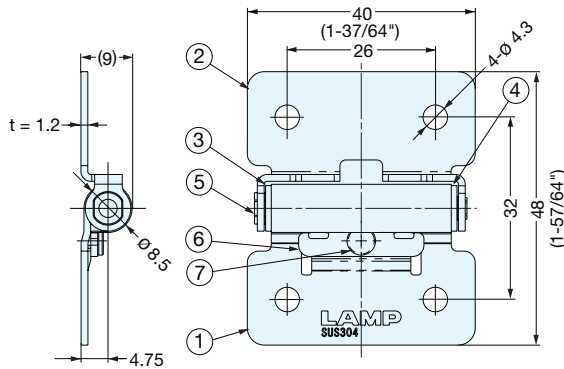
## HG-TS

HINGES

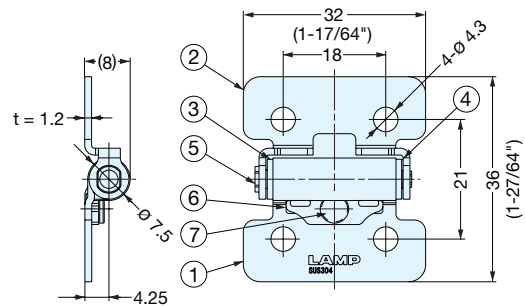
STAINLESS STEEL TORQUE HINGES



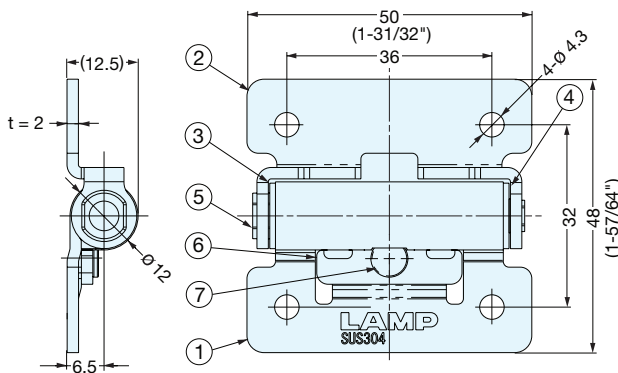
- Hinge with friction torque holds lid/door in desired position.
- Stainless steel material ideal for harsh environments.
- Best durability on continuous open/close cycle.
- Free stop between 0 – 180 degrees.
- RoHS Compliant.



HG-TS07



HG-TS03



HG-TS15

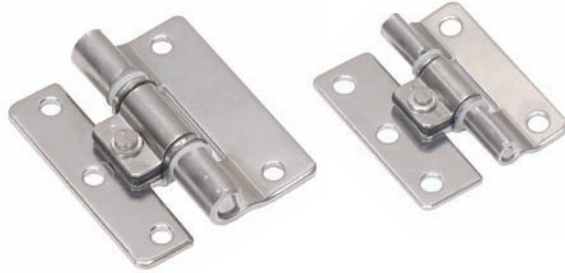
Item No.	Torque per piece
HG-TS03	3.1 lbs/in (+40%, -20%)
HG-TS07	6.2 lbs/in (+40%, -20%)
HG-TS15	13.3 lbs/in (+40%, -20%)

No.	Part Name	Material	Finish
①	Body	304 Stainless Steel	Polished
②	Base		
③	Fixing Tube	Polyacetal	Black
④	Fixing Tube		
⑤	Shaft	303 Stainless Steel	-
⑥	Press Washer	304 Stainless Steel	Polished
⑦	Pin		-

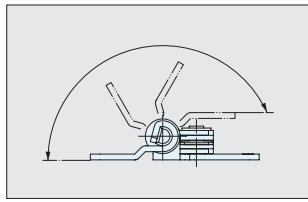
# STAINLESS STEEL TORQUE HINGE



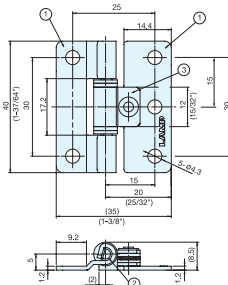
## SFTH



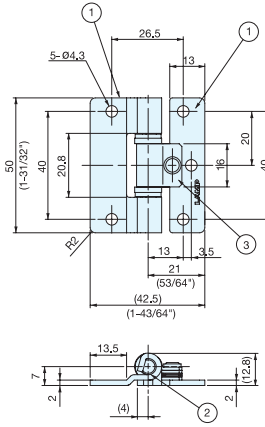
- Hinge with friction torque holds lid/door in desired position.
- Stainless steel construction for corrosive environments.
- Operating temperature: -20°C~60°C (-4°F~140°F)



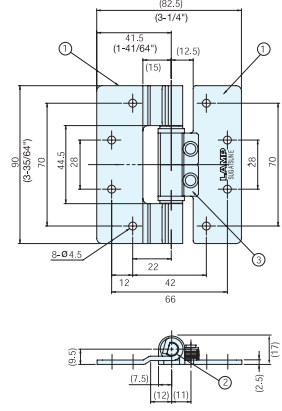
Applicable torque range



SFTH-02



SFTH-03



SFTH-05

Item No.	Torque per piece (kgf-cm)	Weight (g)	Box (pcs)	Carton (pcs)
SFTH-02-5	5 ( 4.3 lbs-in) ±1kgf-cm	21	50	500
SFTH-03-9	9 ( 7.8 lbs-in) ±2kgf-cm	51	30	300
SFTH-03-19	19 (16.5 lbs-in) ±2kgf-cm	195	10	100
SFTH-05-35	35 (30.4 lbs-in) ±5kgf-cm			
SFTH-05-58	58 (50.3 lbs-in) ±5kgf-cm			

No.	Part Name	Material	Finish
①	Body A	304 Stainless Steel	Polished
②	Shaft	303 Stainless Steel	
③	Body B	301 Stainless Steel	

# TORQUE HINGE

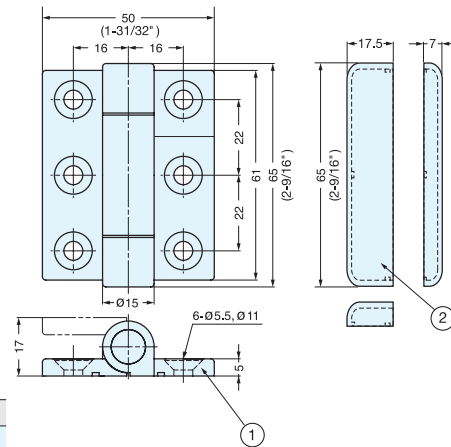


## SK-T-ZA



SK-T-ZA-1CR

- Hinge with friction torque for holding monitors, displays, lids etc. in desired position.
- Plastic cover provided for clean appearance.
- Recommended for use in pairs.
- Lubricant should not be applied on hinge.



Item No.	Torque per piece (kgf-cm)	Weight (g)	Box (pcs)	Carton (pcs)
SK-T-ZA-1SCR	30 (26.0 lbs-in) ±15%	140	20	80
SK-T-ZA-2SCR	20 (17.0 lbs-in) ±15%			
SK-T-ZA-3SCR	15 (13.0 lbs-in) ±15%			
SK-T-ZA-1CR	30 (26.0 lbs-in) ±15%			
SK-T-ZA-2CR	20 (17.0 lbs-in) ±15%			
SK-T-ZA-3CR	15 (13.0 lbs-in) ±15%			

No.	Part Name	Material	Finish
①	Body	Zinc Alloy	Satin Chrome (SCR) Chrome (CR)
②	Cover	ABS	

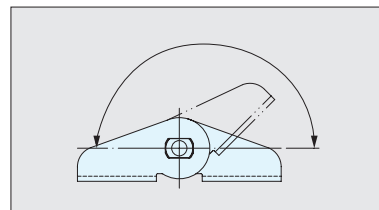
# TORQUE HINGE



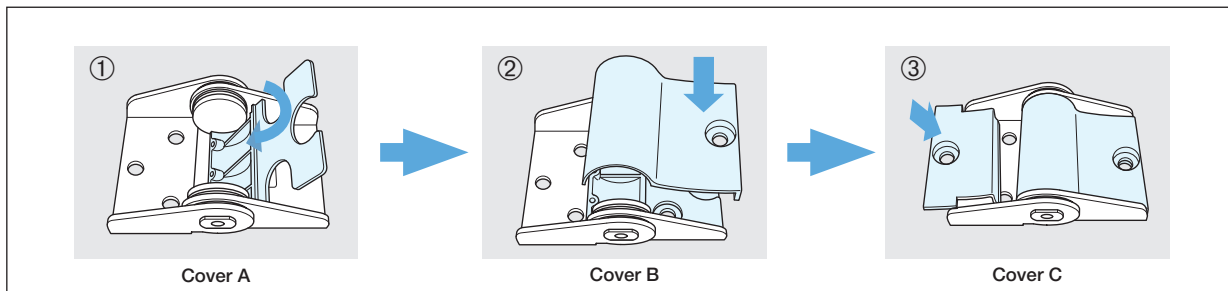
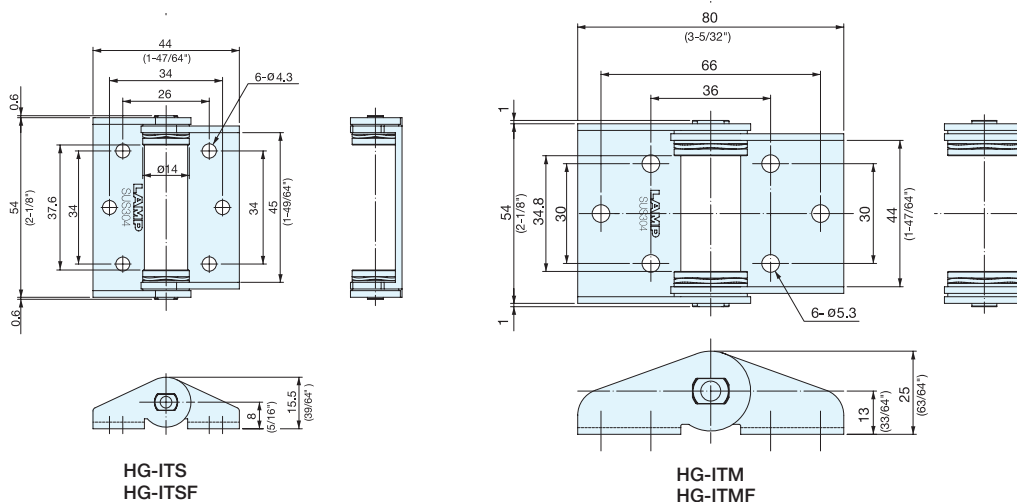
HG-IT



- Hinge with friction torque for holding monitors, displays etc. in desired position.
- Without friction torque available. (HG-ITSF, HG-ITMF)
- Optional cover available for clean appearance.
- Operating Temperature: -10°C~ 50°C (14F°~122F°)



Applicable torque range

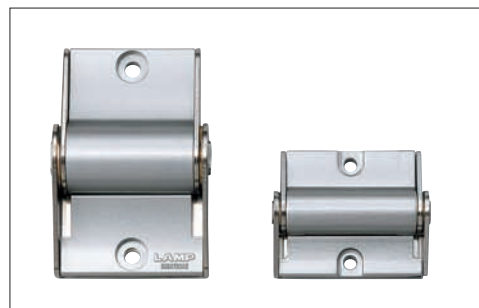


HG-ITSC, HG-ITMC: Cover plates sold separately.

Item No.	Cover For	Weight (g)	Box (pcs)	Carton (pcs)
HG-ITSC	HG-ITS, HG-ITSF	10	40	960
HG-ITMC	HG-ITM, HG-ITMF	18	20	480

Item No.	Torque per piece (kgf-cm)	Weight (g)	Box (pcs)	Carton (pcs)
HG-ITSF	Free Movement	48	10	80
HG-ITMF		125		

Item No.	Torque per piece (kgf-cm)	Weight (g)	Box (pcs)	Carton (pcs)
HG-ITS25	25 (21.7 lbs-in) ±20%	50	20	160
HG-ITS35	35 (30.4 lbs-in) ±20%			
HG-ITM50	50 (43.4 lbs-in) ±20%	130	10	80
HG-ITM70	70 (60.8 lbs-in) ±20%			



Part Name	Material	Finish
Body	304 Stainless Steel	Polished
Shaft	303 Stainless Steel	Plain
Washer	Phosphor Bronze	Polished
Spring Washer	Steel	Nickel
Cover	ABS	Silver

# TORQUE HINGE



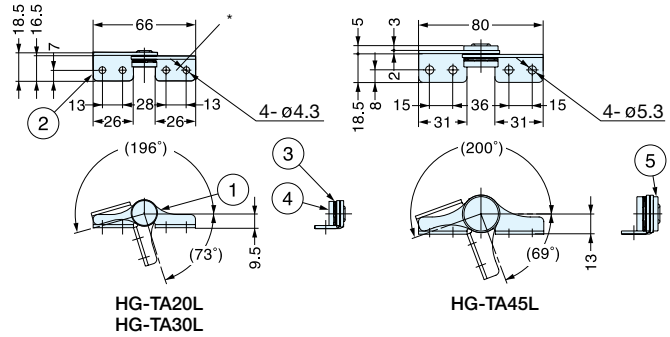
## HG-TA



- Free stop hinge with friction torque.
- Consistent torque through out working range.
- Opening angle 0° ~ 140°

**Applications:**

- Ideal for indoor applications.
- LCD monitors, monitoring cameras, displays etc.



No	Part Name	Material	Finish
①	Hinge A	430 Stainless Steel	Plain
②	Hinge B		
③	Spring Washer	Steel	-
④	Shaft	303 Stainless Steel	-
⑤	Washer	430 Stainless Steel	-

Item No.	Type	Torque per piece (kgf-cm)	Torque per piece (lbs-in)	Weight (g)	Box (pcs)	Carton (pcs)
HG-TA20R	Right hand	20.4±20%	17.7±20%	30	40	320
HG-TA20L	Left hand					
HG-TA30R	Right hand	30.6±20%	26.5±20%	65	20	160
HG-TA30L	Left hand					
HG-TA45R	Right hand	45.9±20%	39.8±20%	65	20	160
HG-TA45L	Left hand					

# TORQUE HINGE



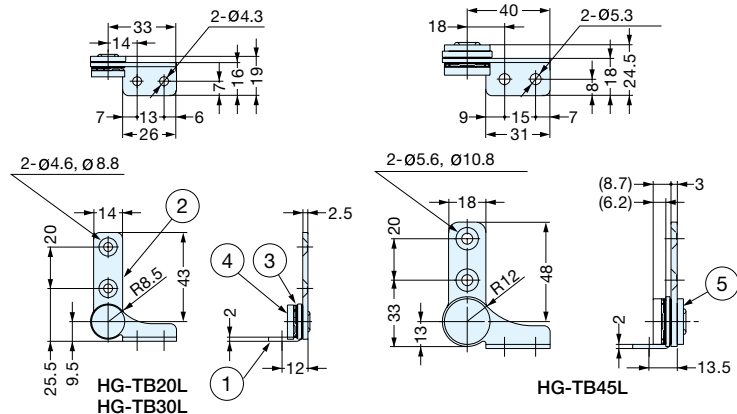
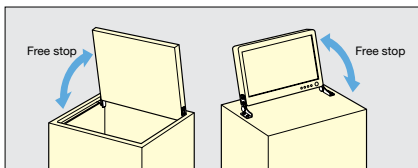
## HG-TB



- Free stop hinge with friction torque.
- Consistent torque through out working range.
- Opening angle 360°

**Applications:**

- Ideal for indoor applications.
- LCD monitors, monitoring cameras, displays etc.



No	Part Name	Material	Finish
①	Hinge A	430 Stainless Steel	Plain
②	Hinge B		
③	Spring Washer	Steel	-
④	Shaft	303 Stainless Steel	-
⑤	Washer	430 Stainless Steel	-

Item No.	Type	Torque per piece (kgf-cm)	Torque per piece (lbs-in)	Weight (g)	Box (pcs)	Carton (pcs)
HG-TB20R	Right hand	20.4±20%	17.7±20%	30	40	320
HG-TB20L	Left hand					
HG-TB30R	Right hand	30.6±20%	26.5±20%	65	20	160
HG-TB30L	Left hand					
HG-TB45R	Right hand	45.9±20%	39.8±20%	65	20	160
HG-TB45L	Left hand					

# SOFT-CLOSE DAMPENING HINGE

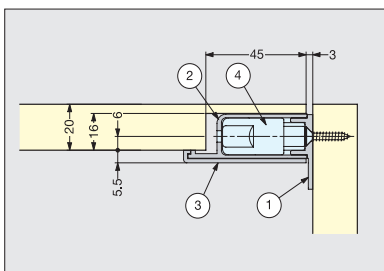
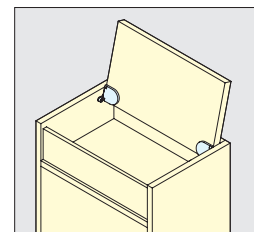
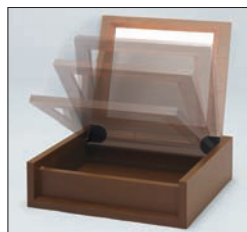


# HG-JHM16

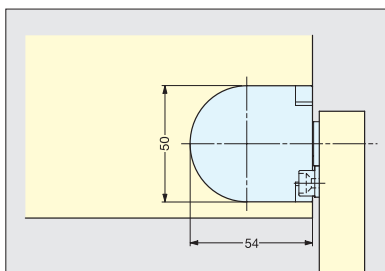
HINGES



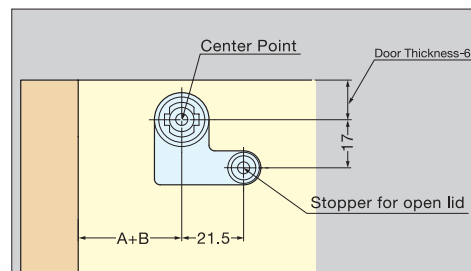
- Hinge with damper built-in to keep lid from slamming shut.
- Mortise mount type.
- Ideal for small size lid.
- Sold in pairs.
- Torque Calculation:  
 $Torque = Door\ Height \times 1/2 \times Door\ Weight$   
 \*Please see diagram below for applicable torque moment.  
 \*Please specify face plate color when ordering.  
 \*Please install Left and Right brackets on correct side.



Installation

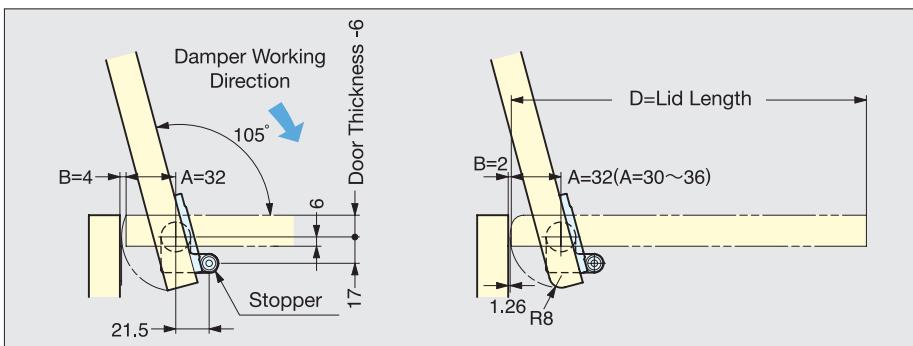


Installation (90° open position)



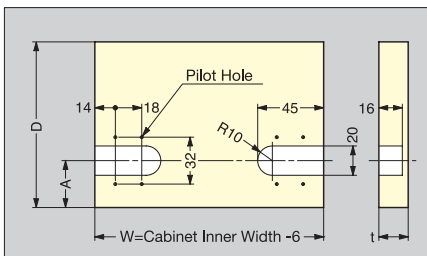
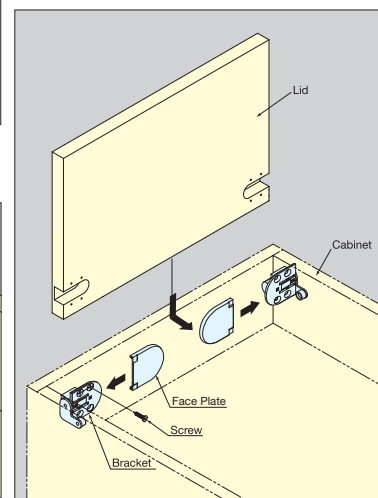
Mounting Plate Installation

SOFT-CLOSE DAMPENING HINGES

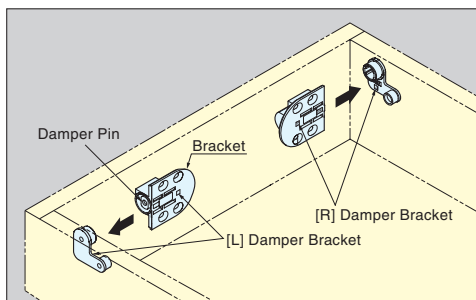


Standard Installation

Installation with Rounded Lid Edge.



Bore Dimensions



Item No.	Part Name	Color	Torque per pair (kgf-cm)	Weight (g)	Box	Carton
HG-JHM16-34	Body	Black	20-34 (17.4-29.5 lbs-in)	91/pair	10 pairs	120 pairs
HG-JHM16-50			34-50 (29.5-43.4 lbs-in)			
HG-JHM16-BL	Face Plate	Black	-	12/pair	10 pairs	120 pairs
HG-JHM16-WT		White				

No.	Part Name	Material	Color
①	Mounting Plate	Aluminum	Black
②	Damper Bracket	Polyacetal	Black
③	Face Plate	ABS	White, Black
④	Damper	304 Stainless Steel	Plain

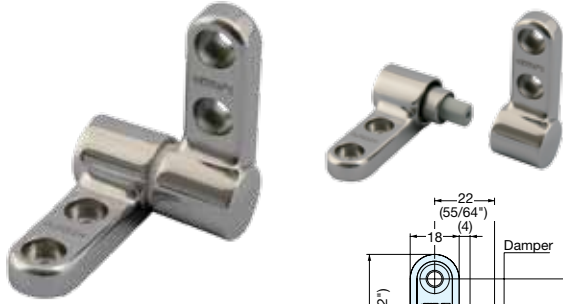




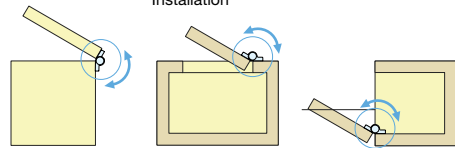
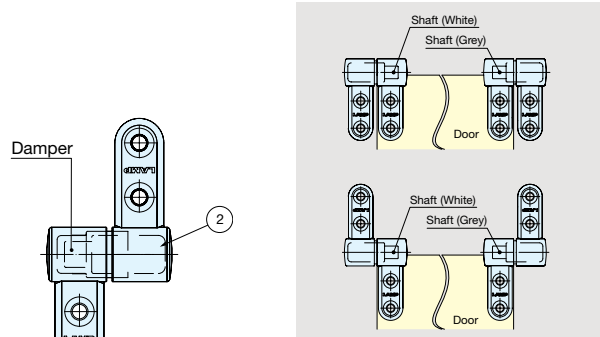
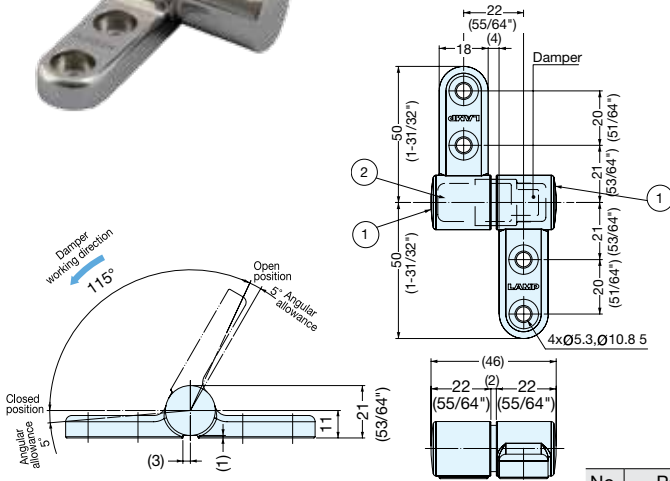
# STAINLESS STEEL SOFT-CLOSE DAMPENING HINGE



## HG-JH14-50



- Soft-Close damper keeps lid from slamming shut.
- Surface mount type.
- Operating temperature: 0-40°C (32-104°F)
- Operating angle: 115° / Dead angle 5°
- Sold in pairs.



No.	Part Name	Material	Finish
①	Bracket	SCS13 Stainless Steel (Similar to SUS304)	Mirror
②	Damper	304 Stainless Steel	Plain

Item No.	Torque per pair (kgf-cm)	Weight (g)	Box (pairs)	Carton (pairs)
HG-JH14-50	30~51 (26~44 lbs-in)	254/pair	1	48

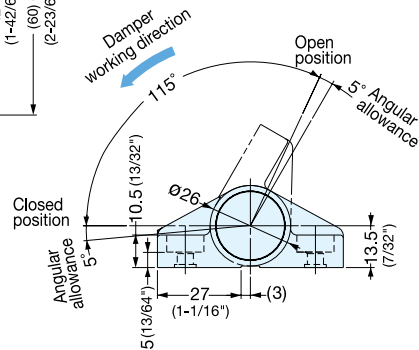
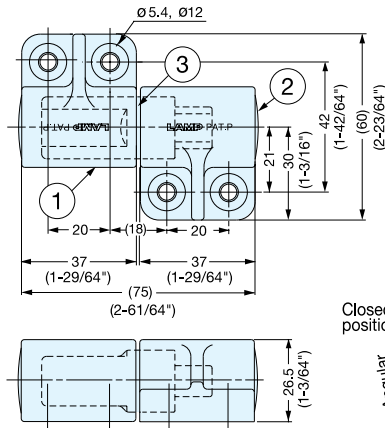
# SOFT-CLOSE DAMPENING HINGE



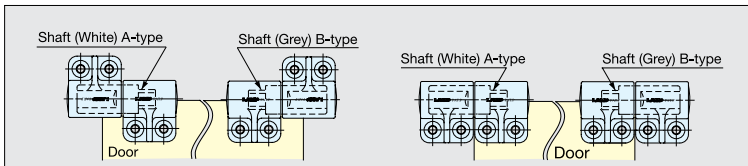
## HG-JH



- Soft-Close damper keeps lid from slamming shut.
- Surface mount type.
- Operating temperature: 0-40°C (32-104°F)
- Operating angle: 115° / Dead angle 5°
- Sold in pairs.



\*A-type damper: Damper works counterclockwise.  
 \*B-type damper: Damper works clockwise.  
 \*Sold in pairs. (Each of A/B type)



Left-Hand Damper is shown

No.	Part Name	Material	Color
①	Bracket	PBT Plastic	Dark Grey
②	Cap	Polypropylene	
③	Damper	304 Stainless Steel	Plain

Item No.	Shaft Color	Torque per pair (kgf-cm)	Weight (g)	Box (pairs)	Carton (pairs)
HG-JH25	White (A-type)	31~51 (27~44 lbs-in)	180/pair	4	64
HG-JH35	Grey (B-type)	51~71 (44~61 lbs-in)			

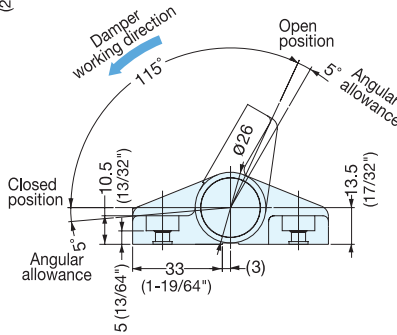
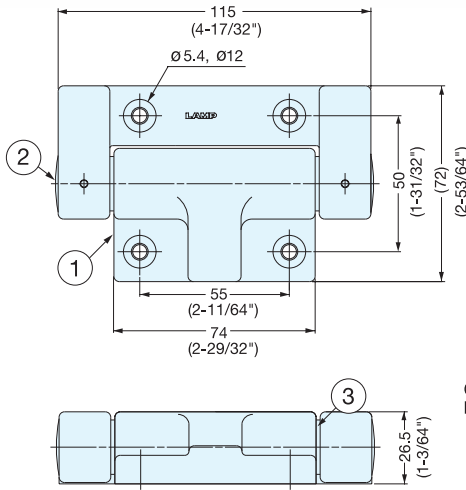
SOFT-CLOSE DAMPENING HINGE



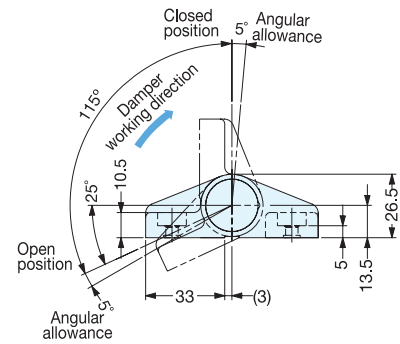
HG-JHW / HG-JHWG



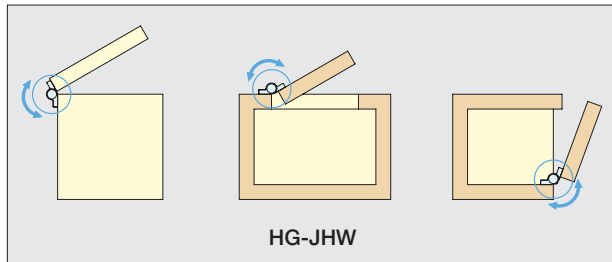
- Soft-Close damper keeps lid from slamming shut.
- Surface mount type.
- Two different damper direction available for various applications.
- Operating temperature: 0~40°C (32~104°F)
- Operating angle: 115° / Dead angle 5°



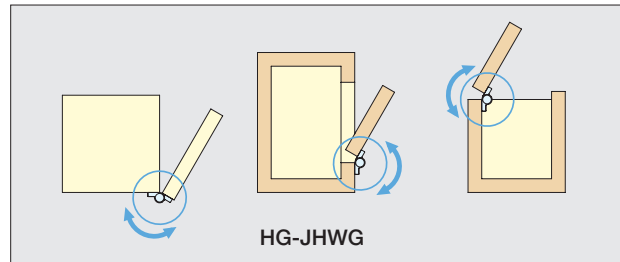
HG-JHW



HG-JHWG



HG-JHW



HG-JHWG

Installation

Item No.	Torque per pair (kgf·cm)	Weight (g)	Box (pcs)	Carton (pcs)
HG-JHW50	61~102 (53~88 lbs·in)	200	4	64
HG-JHW70	102~143 (88~124 lbs·in)			
HG-JHWG50	61~102 (53~88 lbs·in)			
HG-JHWG70	102~143 (88~124 lbs·in)			

No.	Part Name	Material	Color
①	Bracket	PBT Plastic	Dark Grey
②	Cap	Polypropylene	
③	Damper	304 Stainless Steel	Plain

\* Sold per piece.

# STAINLESS STEEL LIFT ASSIST HINGE



# HG-JH210

HINGES

STAINLESS STEEL LIFT ASSIST HINGES



- Spring assists in opening heavy doors.
- Built-in damper keeps lid from slamming shut.
- Passed private 30,000 open/close cycle tests.
- Maximum torque: 210 kgf-cm (182 lbs-in) per piece.

**Moment Formula and Graph**

**Door Moment**  $M_t = W \times \frac{L}{2} \times \cos \theta$

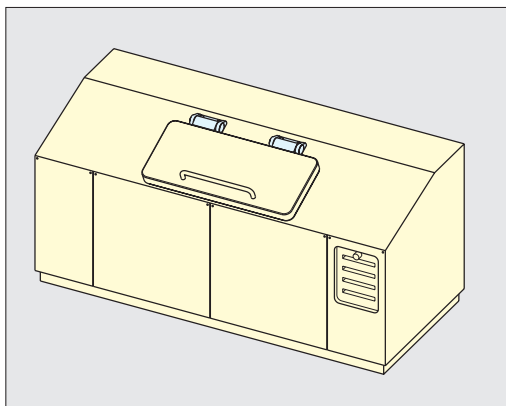
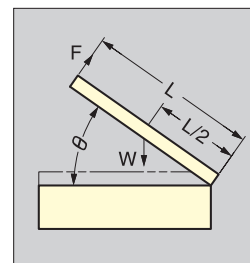
**Hinge Moment**  $M_h = M_m \times (1 - \frac{\theta}{115})$

**Torque to lift door**  $M_z = M_h - M_t$

**Force to lift door**  $F = \frac{M_t - M_h}{L}$

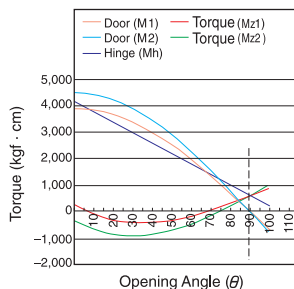
W : Door Weight       $\theta$  : Opening Angle  
 L : Door Length      M<sub>m</sub> : Torque of Assist Hinge

When M<sub>z</sub> is:  
 "-" shows closing force. "+" shows opening force.

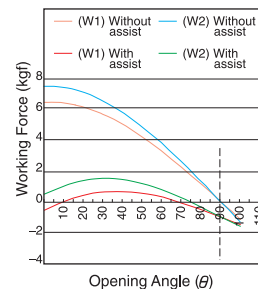


Installation

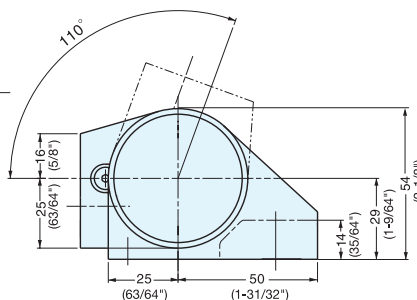
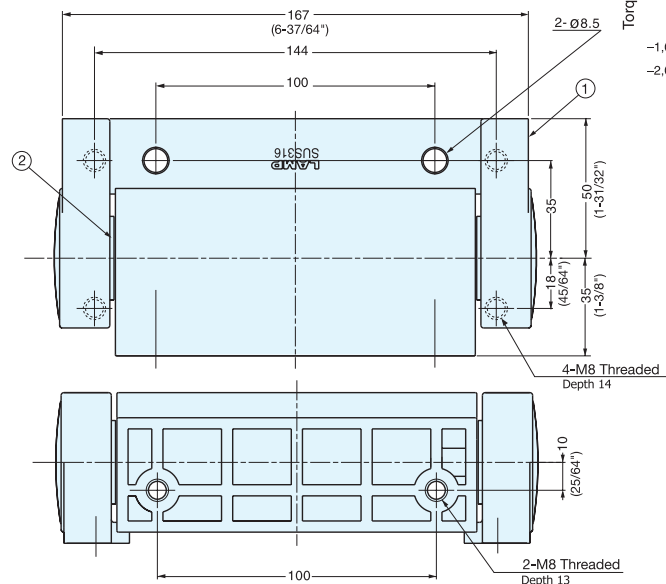
Assist Hinge Moment



Working Force at opening Angle (Compared with No Assist)



\*In case of HG-JH210 used in pair. (L: 60cm, W1: 13kg, W2:15kg)



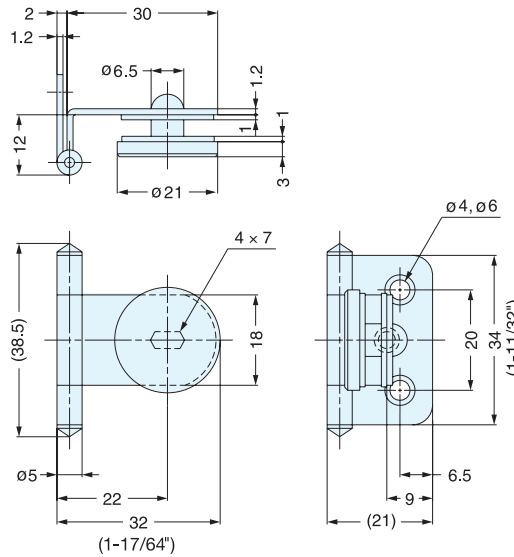
Item No.	Torque per piece (kgf-cm)	Weight (kg)	Box (pcs)	Carton (pcs)
HG-JH210	210 (182lbs-in)	2.4	1	10

No.	Part Name	Material	Finish
①	Body	316 Stainless Steel	Mirror
②	Built-In Damper	304 Stainless Steel + PBT Plastic	-

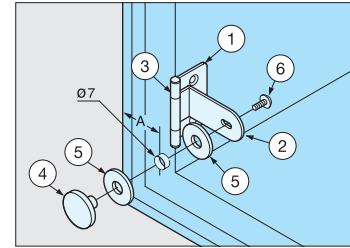
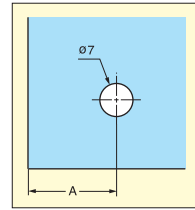
# INSET GLASS DOOR HINGE



# GH-34/0/S



- Hinge for glass/acrylic doors.
- Door thickness: 4~6 mm
- Door weight: Max. 4kg/pair (8.8 lbs/pair)



Glass Thickness	A
4 (5/32")	19
5 (3/16")	18
6 (15/64")	17

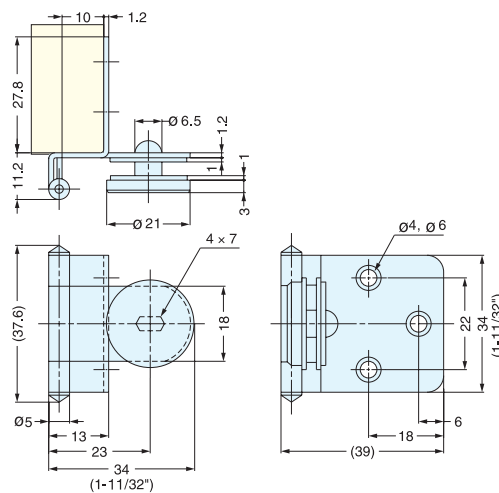
No.	Part Name	Material	Finish
①	Body	304 Stainless Steel	Plain
②	Arm		
③	Hinge Pin	Aluminum	Anodized
④	Plate		
⑤	Washer	Chloroethylene	Clear
⑥	Screw	304 Stainless Steel	Plain

Item No.	Weight (g)	Box (pcs)	Carton (pcs)
GH-34/0/S	15	150	900

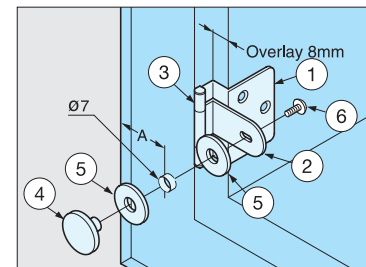
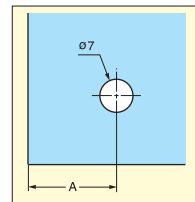
# HALF OVERLAY GLASS DOOR HINGE



# GH-34/8/S



- Hinge for glass/acrylic doors.
- Door thickness: 4~6 mm
- Door weight: Max. 4kg/pair (8.8 lbs/pair)



Glass Thickness	A	Overlay
4 (5/32")	19	8
5 (3/16")	18	7
6 (15/64")	17	6

No.	Part Name	Material	Finish
①	Body	304 Stainless Steel	Plain
②	Arm		
③	Hinge Pin	Aluminum	Anodized
④	Plate		
⑤	Washer	Chloroethylene	Clear
⑥	Screw	304 Stainless Steel	Plain

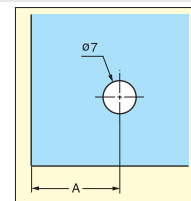
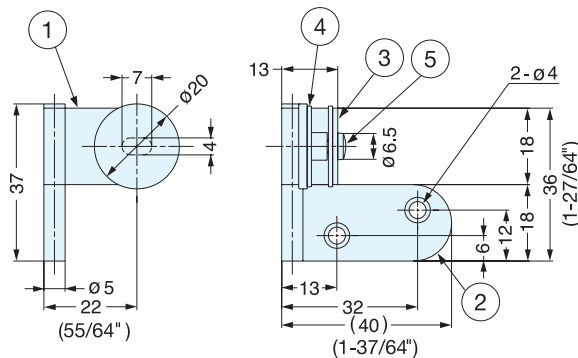
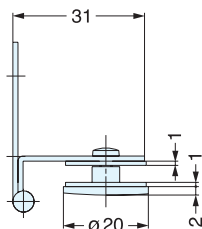
Item No.	Weight (g)	Box (pcs)	Carton (pcs)
GH-34/8/S	21	100	600



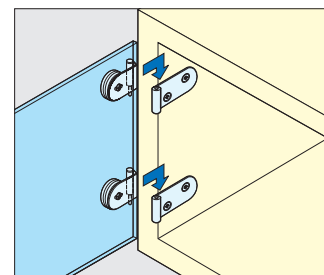
# INSET GLASS DOOR LIFT-OFF HINGE



## GH-36/NCR



Cut Out Dimension



Installation

- Lift-off hinge for glass/acrylic doors.
- Door thickness: 4-6 mm
- Door size: Max. W450 x H700 x t5mm
- Door weight: Max. 4kg/pair (8.8 lbs/pair)

Glass Thickness	A
4 (5/32")	20
5 (3/16")	
6 (15/64")	

No.	Part Name	Material	Finish
①	Body	Steel	Chrome
②			
③	Plate	Brass	
④	Washer	Chloroethylene	Clear
⑤	Screw	Steel	Nickel

Item No.	Weight (g)	Box (pcs)	Carton (pcs)
GH-36/NCRL	24.5	100	400
GH-36/NCRR			

# HALF OVERLAY GLASS DOOR HINGE (W/CATCH)



## GHC-34/8



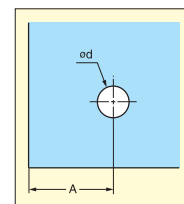
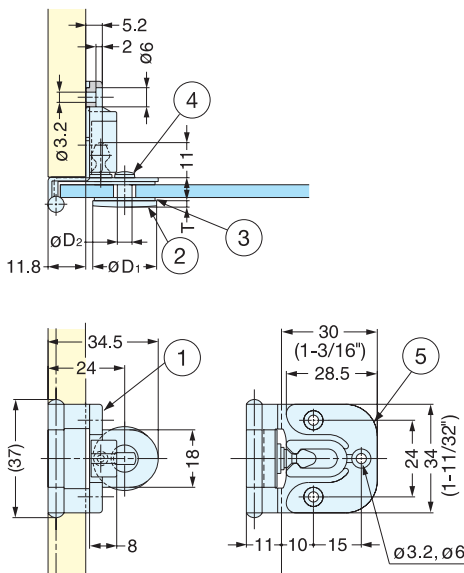
GHC-34/8/CR



GHC-34/8/BLK



GHC-34/8/PB



Cut Out Dimension

- Hinge will hold door in closed position without secondary support.
- Door thickness: 4-6 mm
- Door size: Max. W450 x H700 x t5mm
- Door weight: Max. 4kg/pair (8.8 lbs/pair)

Glass Thickness	A	Overlay
4 (5/32")	19	8
5 (3/16")	18	7
6 (15/64")	17	6

No.	Part Name	Material	Finish
①	Body	GHC-34/8/BLK	304 Stainless Steel
		GHC-34/8/CR	Steel
		GHC-34/8/PB	Polished Brass
②	Plate	GHC-34/8/BLK	Aluminum
		GHC-34/8/CR	Brass
③	Washer	Chloroethylene	Clear
			④
⑤	Catch	Polyacetal	Black

Item No.	D <sub>1</sub>	D <sub>2</sub>	d	T	Weight (g)	Box (pcs)	Carton (pcs)
GHC-34/8/CR	20	6.5	7	2	36	40	600
GHC-34/8/PB							
GHC-34/8/BLK	21	8	8.5	3	32		

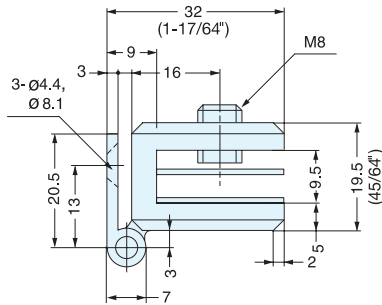




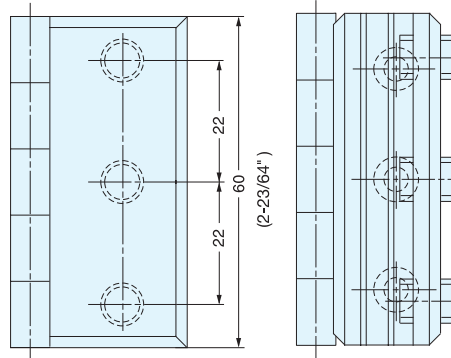
# GLASS DOOR HINGE



## XL-GH01-600



- Pre-drilling on glass/acrylic not required.
- Door thickness: 4~8 mm
- Door size: Max. W400 x H1300mm
- Please use 2 spacers for 4mm door thickness.

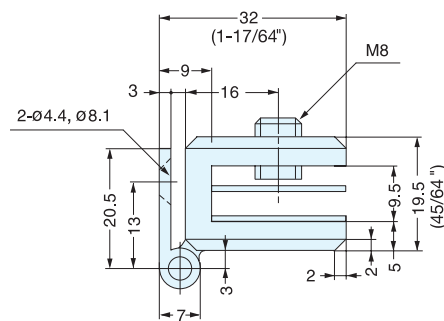


Item No.	Weight (g)	Box (pcs)	Carton (pcs)	Material	Finish
XL-GH01-600	180	10	50	304 Stainless Steel	Polished

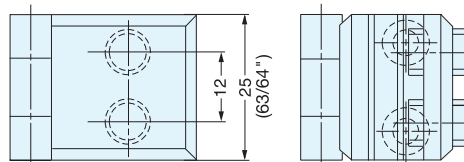
# GLASS DOOR HINGE



## XL-GH01-250



- Pre-drilling on glass/acrylic not required.
- Door thickness: 4~8 mm
- Door size: Max. W400 x H600mm
- Please use 2 spacers for 4mm door thickness.



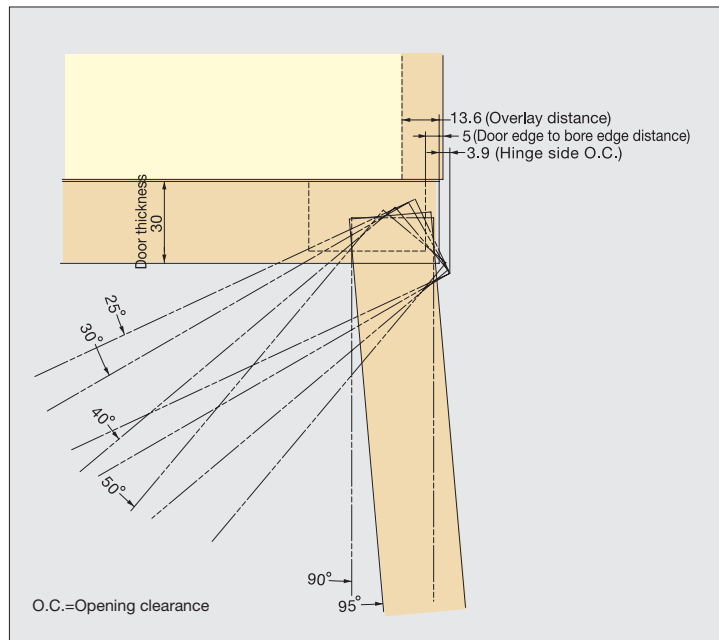
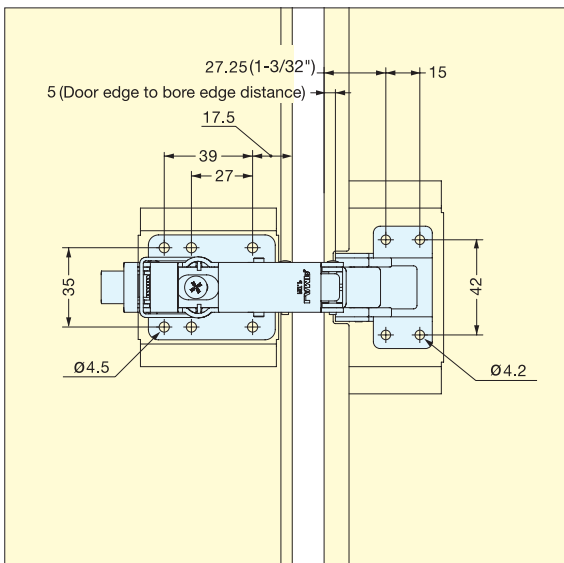
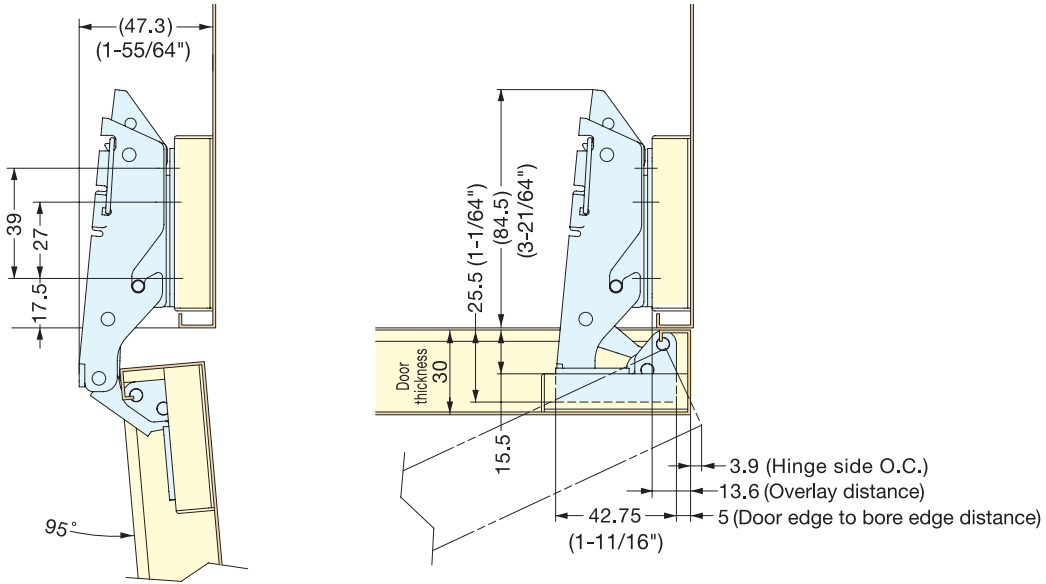
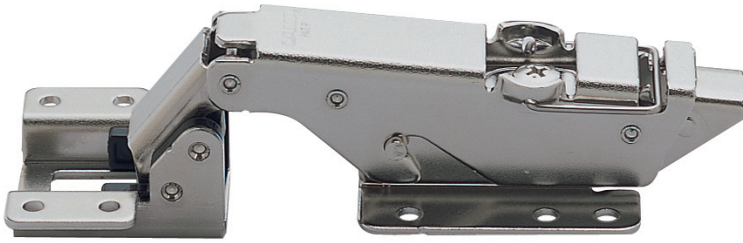
Item No.	Weight (g)	Box (pcs)	Carton (pcs)	Material	Finish
XL-GH01-250	76	10	100	304 Stainless Steel	Polished

# CONCEALED HINGE (CLIP-ON)



## H95TS

- 95° opening concealed hinge.
- Clip-on feature allows easy door installation/removal.
- Safety lock feature.
- Door opens without interfering side cabinets.
- Ideal when 2 doors are close together.



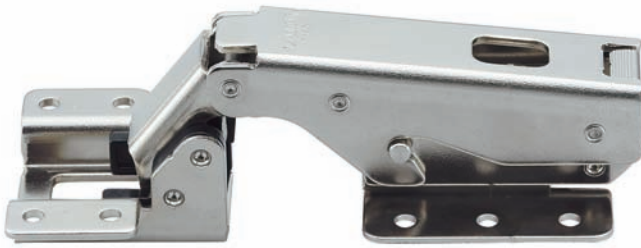
Installation

Item No.	Weight (g)	Carton (pcs)	Item No.	Part Name	Material	Finish
H95TSH	149	100	H95TSH	Body	Steel	Nickel
H95TSZ	94		H95TSZ	Mounting Plate		

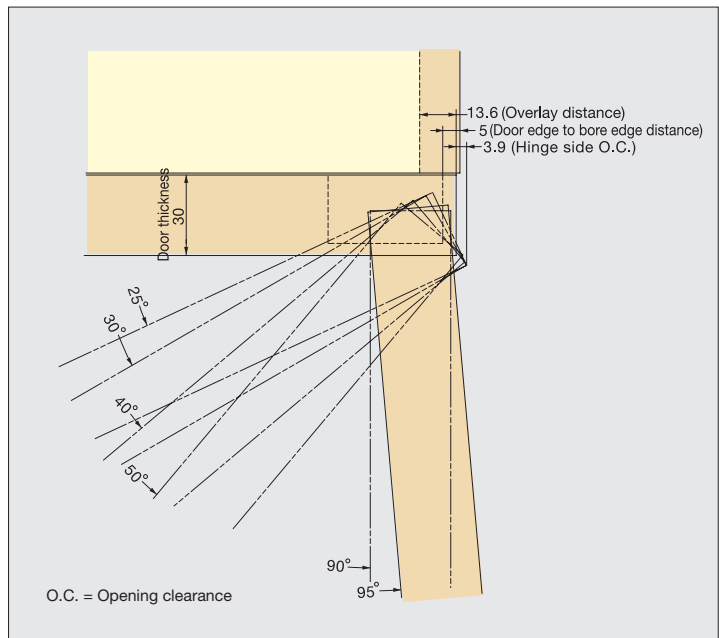
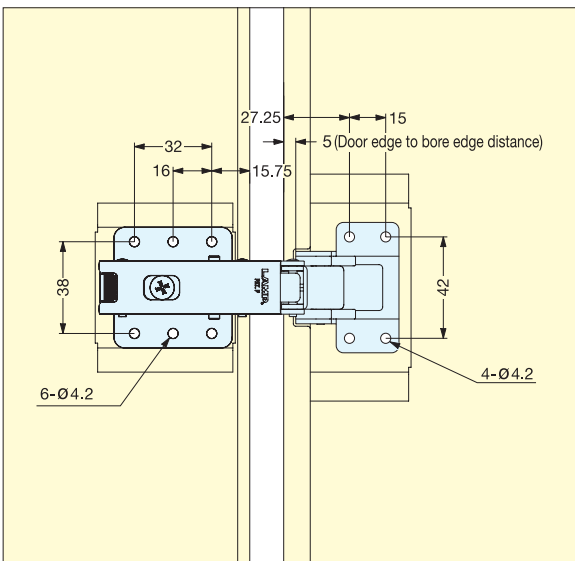
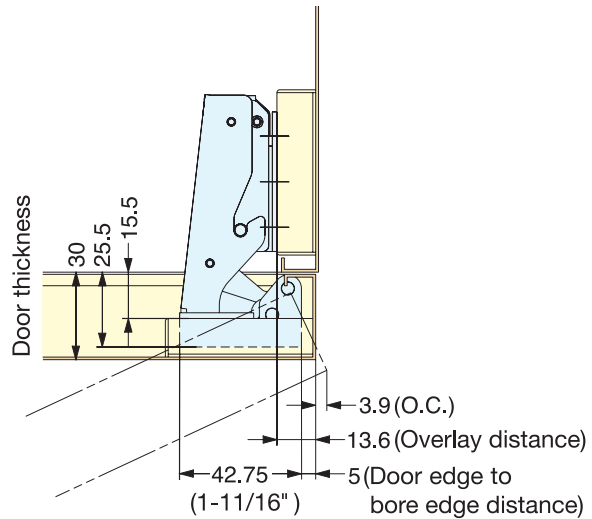
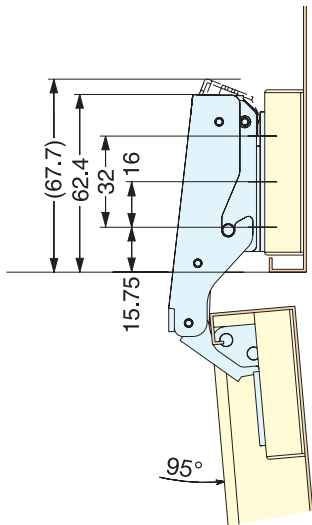
# CONCEALED HINGE (CLIP-ON)



## H95TM



- 95° opening concealed hinge.
- Clip-on feature allows easy door installation/removal.
- Door opens without interfering side cabinets.
- Ideal when 2 doors are close together.



Installation

Item No.	Weight (g)	Carton (pcs)	Item No.	Part Name	Material	Finish
H95TMH	138	100	H95TMH	Body	Steel	Nickel
H95TMZ	81		H95TMZ	Mounting Plate		

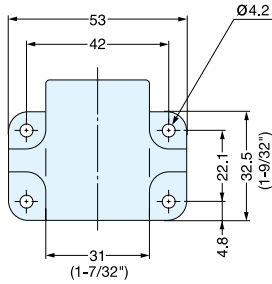
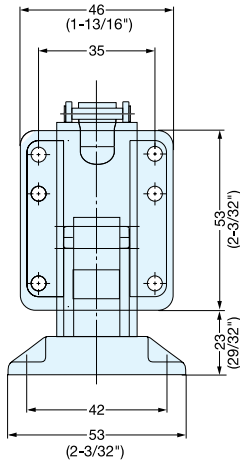
# CONCEALED HINGE (CLIP-ON)



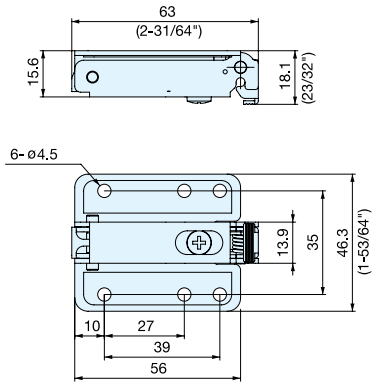
## HT-160T



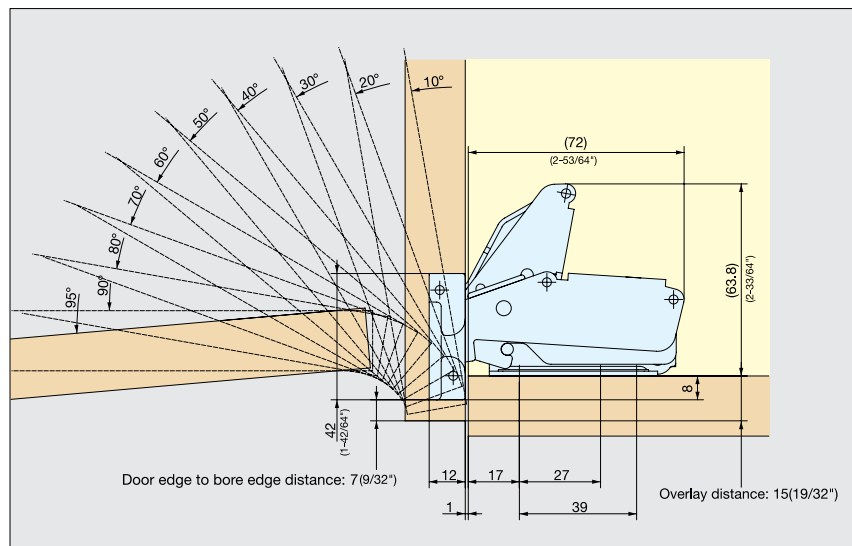
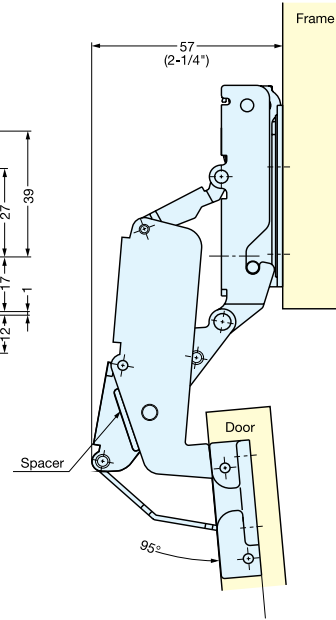
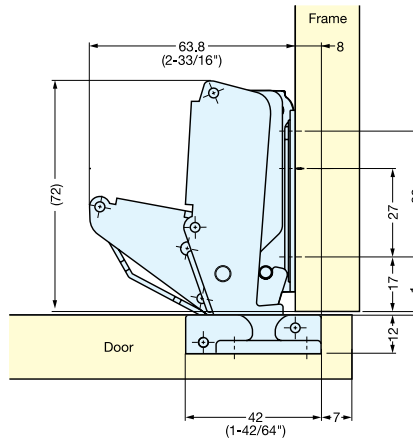
- 95° opening concealed hinge.
- Door opens without interfering side cabinets.
- Ideal when 2 doors are close together.
- CLIP-ON feature allows easy door installation/removal.
- Ordering:
  - CLIP-ON: Order HT-160THV2&HT-160TZ for complete set.
  - Without CLIP-ON feature: HT-160V2



HT-160THV2



HT-160TZ (Mounting Plate)

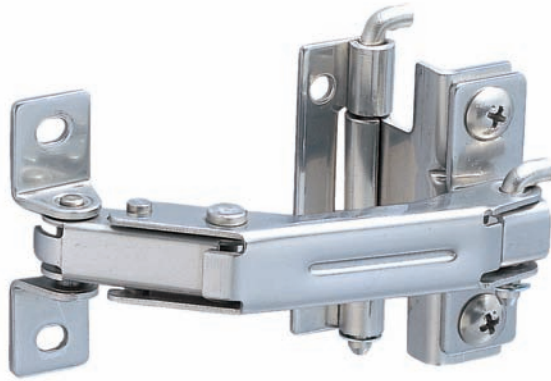


Item No.	Weight (g)	Carton (pcs)	Item No.	Part Name	Material	Finish / Color
HT-160THV2	205	100	HT-160THV2	Plate	Zinc Alloy	Nickel
				Body	Steel	Nickel
HT-160TZ	68	200	HT-160TZ	Spacer	Polyacetal	Black
			HT-160TZ	Mounting Plate	Steel	Nickel

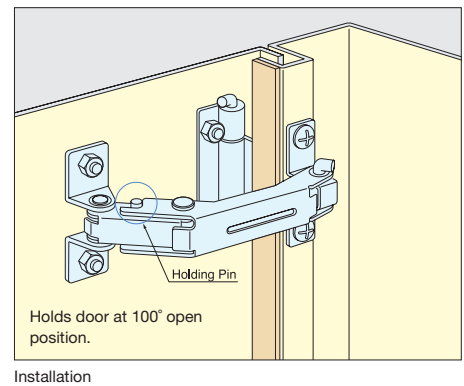
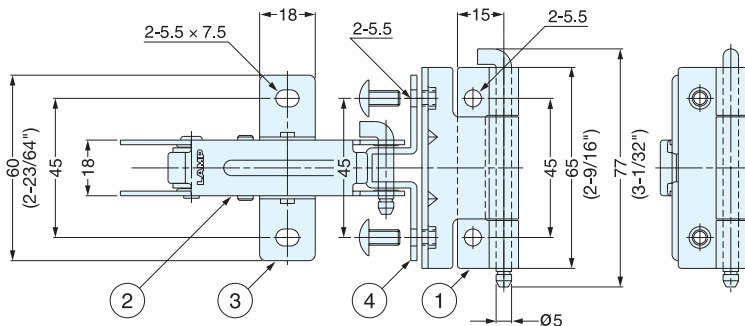
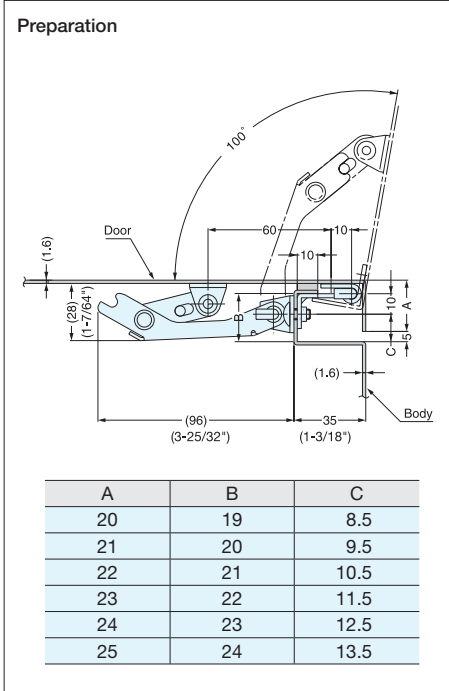
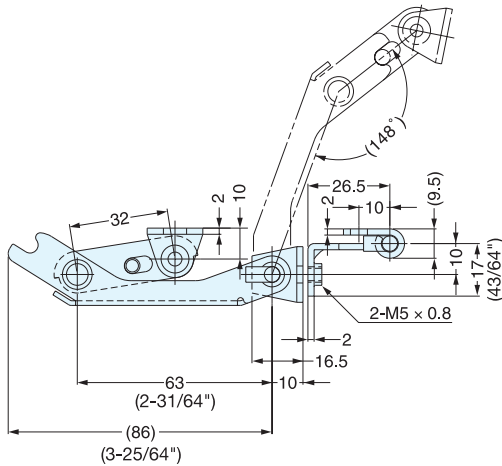
# CONCEALED HINGE (W/STAY)



# HG-YS65C



- Combination of hinge and stay.
- Designed for sheet metal applications.
- Stay holds door at 100° open position.
- Removable pin (included) allows for easy door installation/removal.
- Holding force: 30 kgf-cm/piece (26 lbs-in/piece)
- Door weight: Max. 10kg/pair (22 lbs/pair)
- Ring retainer for pins not included.



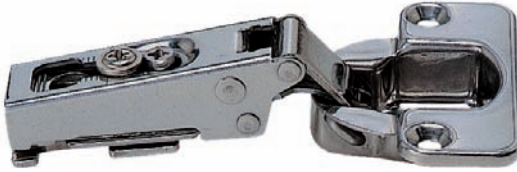
Item No.	Weight (g)	Box (pcs)	Carton (pcs)
HG-YS65C	190	10	100

No.	Part Name	Material	Finish
①	Hinge	304 Stainless Steel	Polished
②	Stay		
③	Bracket		
④	Hinge Bracket		

# CONCEALED HINGE (19mm OVERLAY)



## 304B-46/19, C46/19

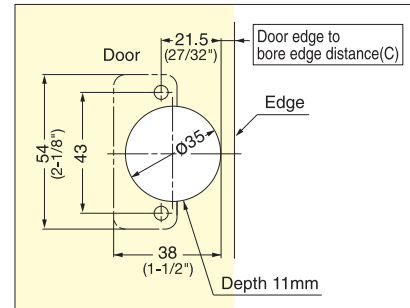
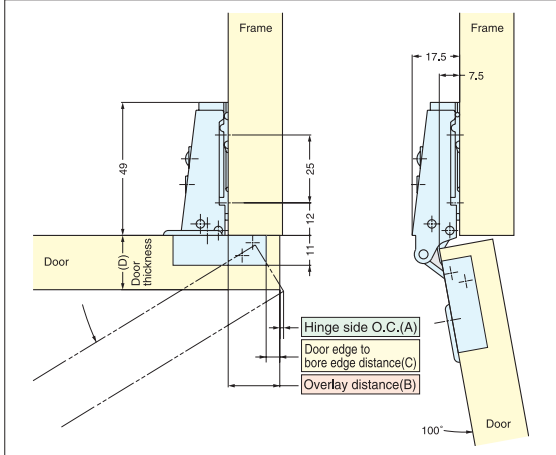


■ Door edge to bore edge distance (C) and Overlay distance (B) Table 1.

Door edge to bore edge distance (C)	3	4	5
Overlay distance (B)	17	18	19

■ Hinge side opening clearance chart Table 2.

Door thickness (D)	Door edge to bore edge distance (C)		
	3	4	5
15	0.5	0.5	0.5
16	0.7	0.7	0.7
17	0.8	0.8	0.8
18	1.0	1.0	1.0
19	1.2	1.2	1.2
20	1.4	1.4	1.4
Hinge side O.C. (A)			



Bore Dimensions

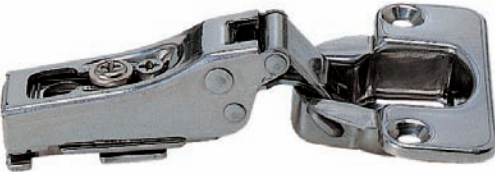
Item No.	Type	Weight (g)	Carton (pcs)
304B-46/19	Free Swinging	60	200
304B-C46/19	Self-Closing		

Material	Finish
304 Stainless Steel	Polished

# CONCEALED HINGE (14mm OVERLAY)



## 304B-46/14, C46/14

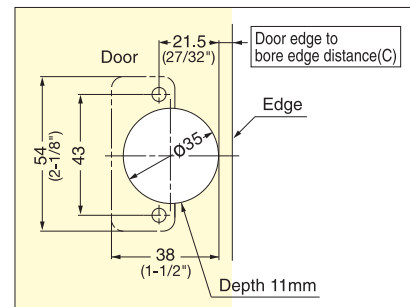
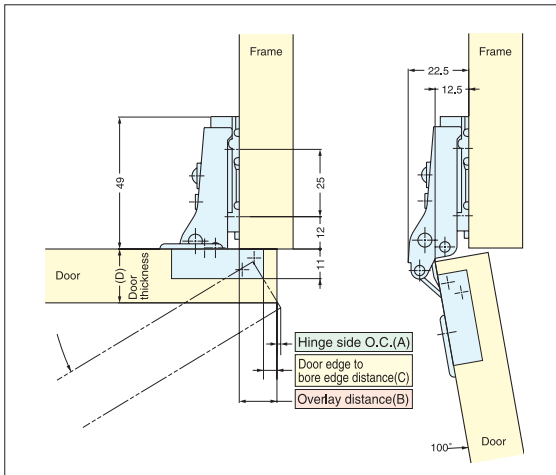


■ Door edge to bore edge distance (C) and Overlay distance (B) Table 1.

Door edge to bore edge distance (C)	3	4	5
Overlay distance (B)	12	13	14

■ Hinge side opening clearance chart Table 2.

Door thickness (D)	Door edge to bore edge distance (C)		
	3	4	5
15	0.5	0.5	0.5
16	0.7	0.7	0.7
17	0.8	0.8	0.8
18	1.0	1.0	1.0
19	1.2	1.2	1.2
20	1.4	1.4	1.4
Hinge side O.C. (A)			



Bore Dimensions

Item No.	Type	Weight (g)	Carton (pcs)
304B-46/14	Free Swinging	60	200
304B-C46/14	Self-Closing		

Material	Finish
304 Stainless Steel	Polished

# CONCEALED HINGE (9mm OVERLAY)



# 304B-46/9, C46/9



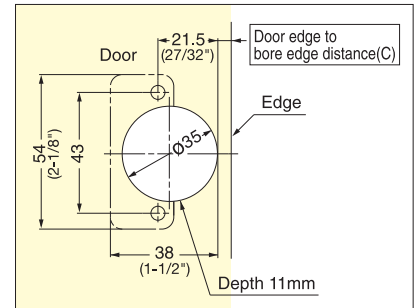
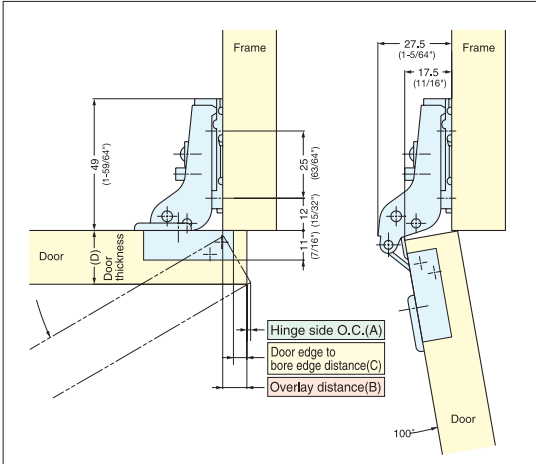
■ Door edge to bore edge distance (C) and Overlay distance (B) Table 1.

Door edge to bore edge distance (C)	3	4	5
Overlay distance (B)	7	8	9

■ Hinge side opening clearance chart Table 2.

Door thickness (D)	Door edge to bore edge distance (C)		
	3	4	5
15	0.5	0.5	0.5
16	0.7	0.7	0.7
17	0.8	0.8	0.8
18	1.0	1.0	1.0
19	1.2	1.2	1.2
20	1.4	1.4	1.4

Hinge side O.C. (A)



Bore Dimensions

Item No.	Type	Weight (g)	Carton (pcs)	Material	Finish
304B-46/9	Free Swinging	60	200	304 Stainless Steel	Polished
304B-C46/9	Self-Closing				

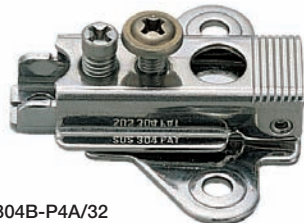
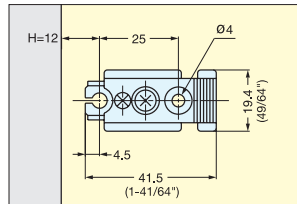
# MOUNTING PLATE



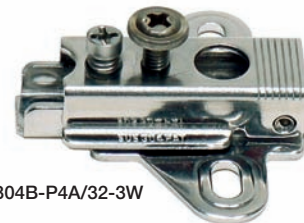
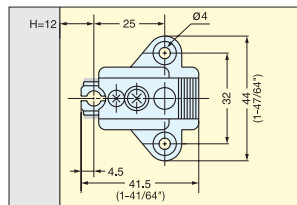
# 304B-P3A, P4A/32, P4A/32-3W



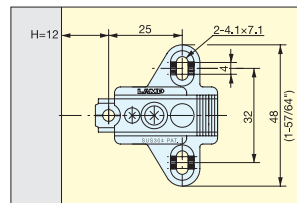
304B-P3A



304B-P4A/32

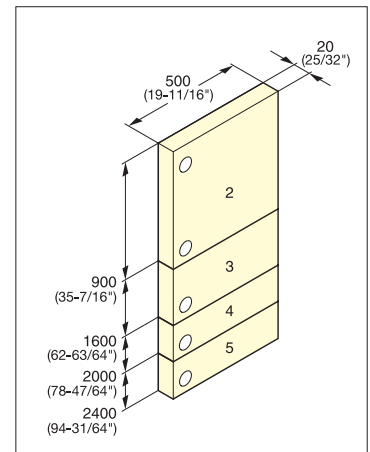


304B-P4A/32-3W



Installation

• Mounting plate for 304B hinges.



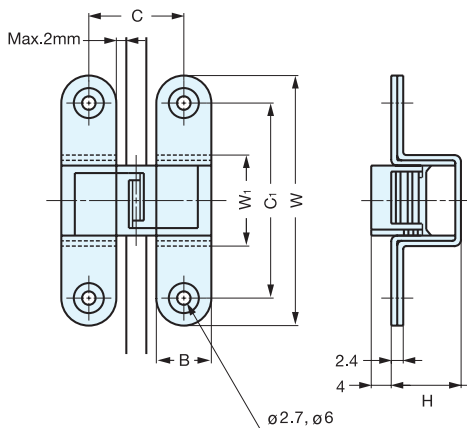
Number of hinges required.

Item No.	Weight (g)	Carton (pcs)	Material	Finish
304B-P3A	40	400	304 Stainless Steel	Polished
304B-P4A/32				
304B-P4A/32-3W				

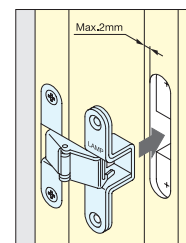
# CONCEALED HINGE



# RK-50



- Door size: Max. W450 x H700 x t21 mm (W 17-23/32" x H 27-9/16" x t 53/64")
- Door weight: Max. 2.6 kg/pair (5.7 lbs/pair)



Installation

Material	Finish
304 Stainless Steel	Satin

Item No.	W	B	C	C <sub>1</sub>	H	W <sub>1</sub>	Weight (g)	Box (pcs)	Carton (pcs)
RK-50	50 (1-31/32")	11 (7/16")	19 (3/4")	38 (1-1/2")	14 (35/64")	18.2 (23/32")	28	24	240

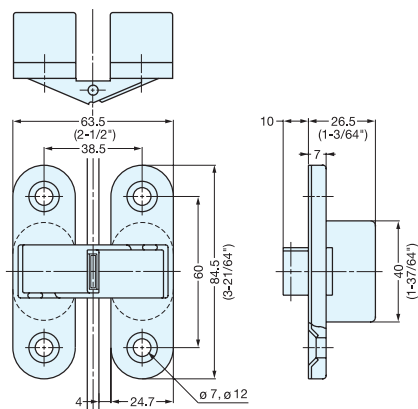
# CONCEALED HINGE



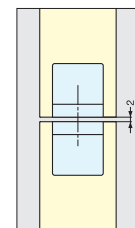
# I-66, I-90



I-66



- Door weight:  
I-66 Max. 30kg/pair (66 lbs/pair)  
Max. 50kg/3pcs (110lbs/3pcs)  
I-90 Max. 40kg/pair (88 lbs/pair)  
Max. 60kg/3pcs (132lbs/3pcs)

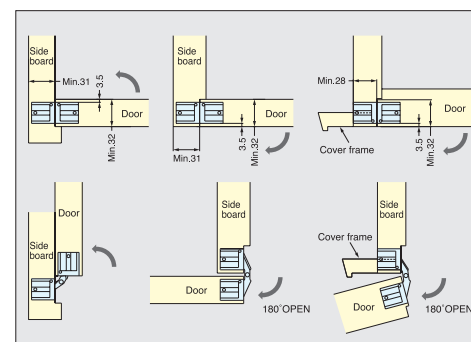
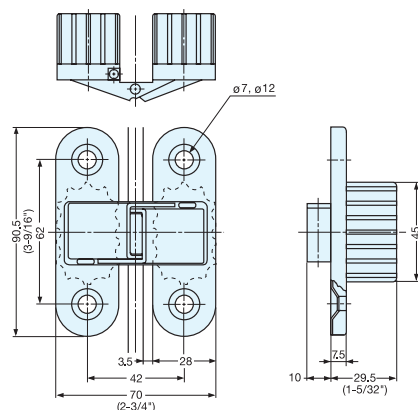


I-66

\*Distance between door edge and hinge must be less than 4 mm.



I-90



I-90

\*Distance between door edge and hinge must be less than 3.5 mm.

Item No.	Weight (g)	Box (pcs)	Carton (pcs)	Part Name	Material	Finish
I-66	100	24	240	Plate & Arm	304 Stainless Steel	Satin
I-90	115			Body	Polyamide	White (I-66) Brown (I-90)

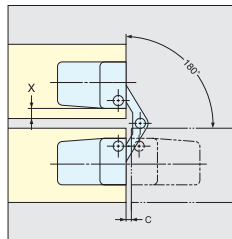
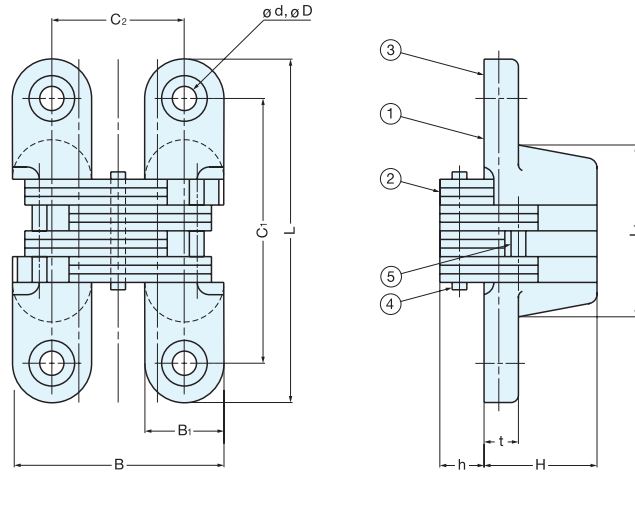
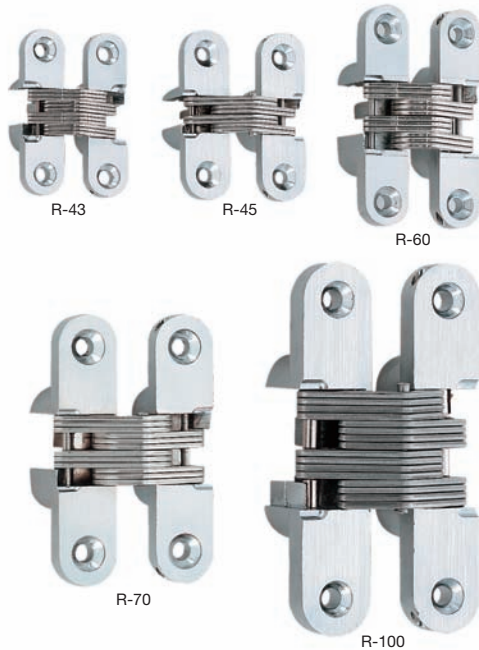


# CONCEALED HINGE



# R SERIES

• Door size: Max. W450 x H700 x t21mm  
(W17-23/32" x H27-9/16" x t53/64")



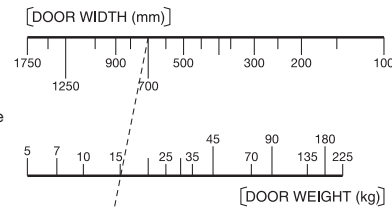
Distance between door edge and hinge must be less than the figures shown in column "X" of the dimension table below.

To determine the number of hinges required for each door:

- Using the chart to the right, locate the correct door width (upper scale) and door weight (lower scale). Draw a line connecting these 2 points to the chart below (point "a"). Then draw a vertical line through the lower chart to find the number and type of hinges required.

- Check door thickness requirements.

Item No.	No. of Hinges (pcs)
R- 43	3
R- 45	3
R- 60	3
R- 70	2
R-100	2



[In case of door width, 700mm and door weight, 15kg]

Item No.	Required Number Of Hinges (pcs)				"a"	Min. Door Thickness
R-43	2	3	4			13mm
R-45	2	3	4			19mm
R-60	2	3	4			19mm
R-70	2	3	4			25mm
R-100	2	3	4			29mm

No.	Part Name	Material	Finish
①	Body	Zinc Alloy	Satin Chrome
②	Link Arm	304 Stainless Steel	Plain
③	Pin A	R-43~70 304 Stainless Steel	
④	Pin B	R-100, Steel 304 Stainless Steel	
⑤	Pin C	R-43~70 304 Stainless Steel	
		R-100, Steel	

Item No.	L	L <sub>1</sub>	B	B <sub>1</sub>	C <sub>1</sub>	C <sub>2</sub>	H	h	t	D	d	C	X	Arm (qty)	Weight (g)	Box (pcs)	Carton (pcs)	Screw
R-43	43 (1-11/16")	22	29 (1-9/64")	11	32	18	13	(5 )	5	6.2	3.5	0.8	2.3	12	37	30	300	3.1×16
R-45	45 (1-25/32")	19	35.7 (1-13/32")	13	32	22.7	18.5	(6 )	5	7	3.5	0.8	3	8	56	20	200	3.1×20
R-60	60 (2-23/64")	33	35.2 (1-25/64")	13	47	22.2	18.5	(6.5)	6.5	8.3	4.3	1	3	12	94	10	100	3.5×20
R-70	70 ( 2-3/4" )	35	42.6 (1-43/64")	16.1	53	26.6	23	(9 )	7	9.1	4.6	1.2	3.5	12	157	10	100	4×25
R-100	100 (3-15/16")	52	53.2 ( 2-3/32")	20	80	33.2	27.5	(9.5)	9.5	10	5.3	1.8	4.8	16	342	10	60	4.5×32

# 3WAY ADJUSTABLE CONCEALED HINGE



# HES3D-190

HINGES

3WAY ADJUSTABLE CONCEALED HINGES



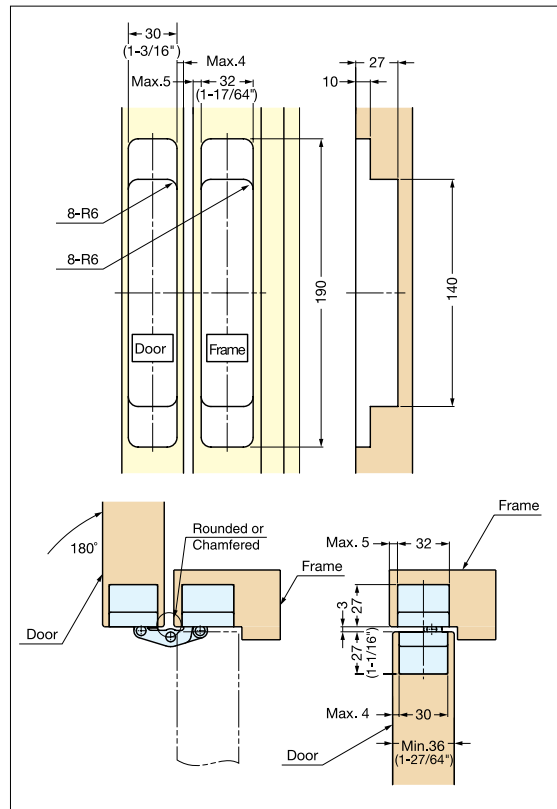
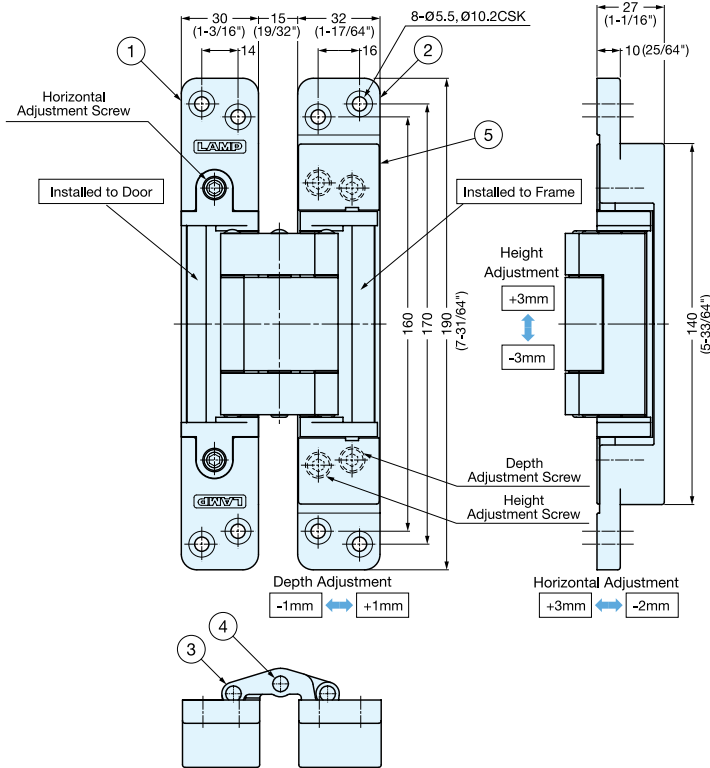
- 3 WAY adjustment function allows vertical, horizontal, and depth adjustment after hinge is installed.
- Easy installation / removal.
- Successfully passed 200,000 open / close private cycle tests.
- Available in Matte Silver or Matte Gold finish.
- Supplied with stainless steel flat head screw. (Screw head painted)
- Door weight: Max. 70kg (154lbs) / 2pcs
- Door Thickness: Min. 36mm (1-27/64")
- Max. Door Size: H 2400mm x W 900mm (H 94-31/64" x W 35-7/16")
- Light duty version available.

**PLEASE USE HES3D-E190 SERIES INSTEAD.**

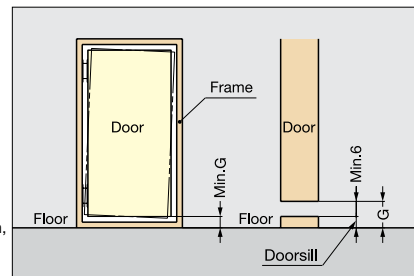
Item No.	Finish / Color
HES3D-190SL	Matte Silver
HES3D-190GL	Matte Gold

Item No.	Weight (g)	Box (pcs)	Carton (pcs)
HES3D-190SL	940	2	12
HES3D-190GL			

No.	Part Name	Material	Finish / Color
①	Body	Zinc Alloy	Matte Silver Matte Gold
②	Base Frame	Zinc Alloy	
③	Arm	Aluminum	-
④	Shaft	304 Stainless Steel	-
⑤	Cover	ABS	Matte Silver, Matte Gold



Bore Dimensions



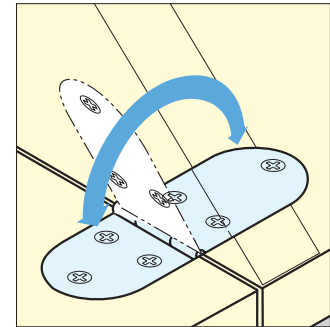
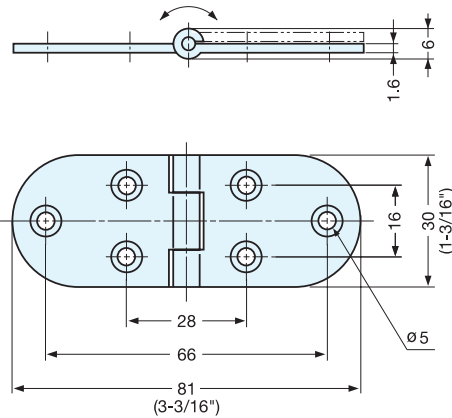
To determine the door and frame dimension, (G) must be taken into account.  
G = Min. 6mm + doorsill

# TABLETOP HINGE



## SMH-83

- Door Size: Max. W450 x H700 x t21mm (W17-23/32" x H27-9/16" x t53/64")
- Door Weight: Max. 4kg/pair (8.8 lbs/pair)
- Double pivot hinge with 180° opening.



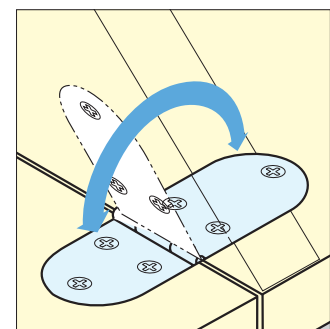
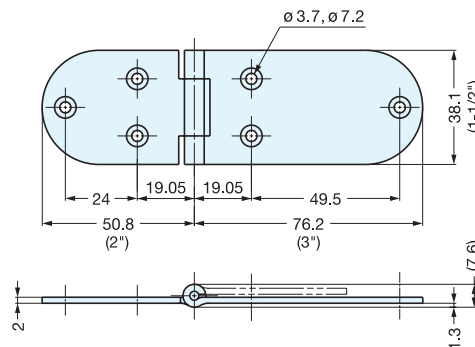
Installation

Item No.	Weight (g)	Box (pcs)	Carton (pcs)	Material	Finish
SMH-83/S	28	100	1000	304 Stainless Steel	Satin (S)
SMH-83/CR	31			Steel	Chrome (CR)

# TABLETOP HINGE



## MA-5



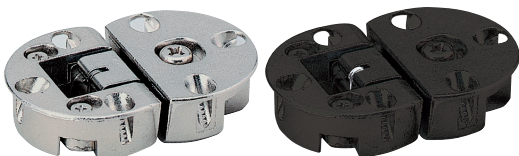
Installation

Item No.	Weight (g)	Box (pcs)	Carton (pcs)	Material	Finish
MA-5	74	20	200	304 stainless Steel	Mirror

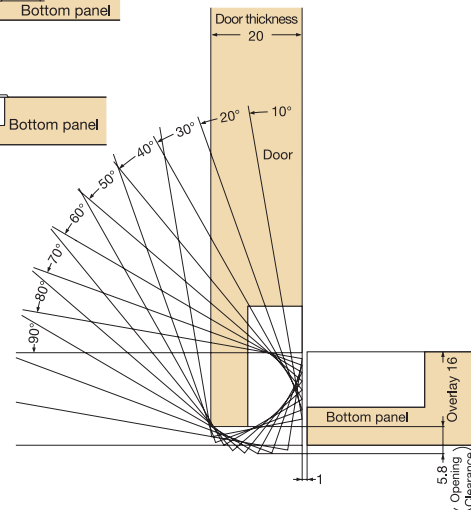
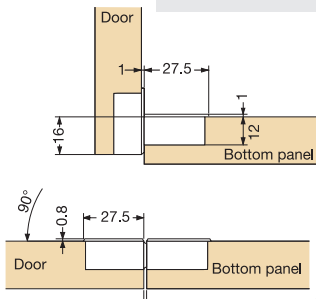
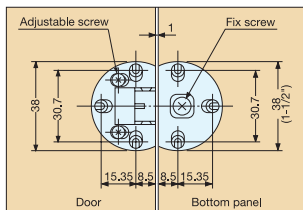
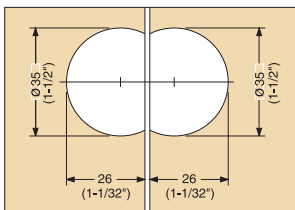
# DROP LID HINGE (ADJUSTABLE TYPE)



**SDH-001**



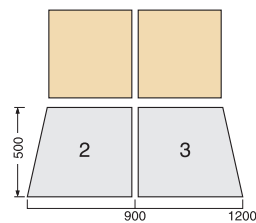
- Opening angle 90°
- Two way adjustment (overlay and door gap)
- Flush when opened, ideal for writing desk application
- Can be used with soft down stay SDS-100 or NSDX-10.
- Door Thickness: 16 ~ 20mm (5/8~25/32")
- Overlay Coverage: 14 ~ 16mm (35/64"~5/8")



Bore Dimensions



# of Hinges Required



Item No.	Material	Finish	Weight (g)	Box (pcs)	Carton (pcs)
SDH-001/NI	Zinc Alloy	Nickel	79	50	200
SDH-001/BLK		Black			

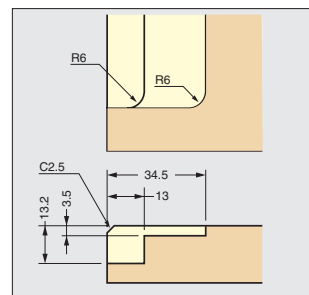
# TABLETOP PIANO HINGE



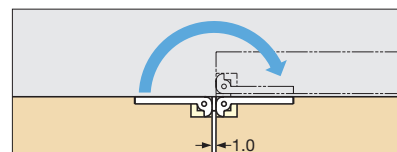
**HG-MH**



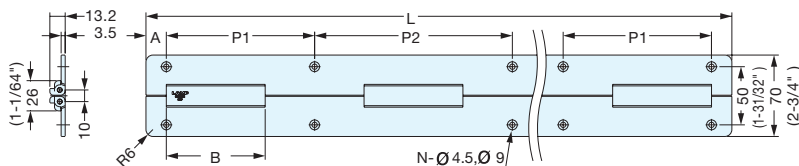
- Not a load bearing hinge, requires secondary support.



Bore Dimensions



- Unique "Double Joint" mechanism allows 180° opening.
- HG-MH is not a load bearing hinge. A secondary support is recommended.



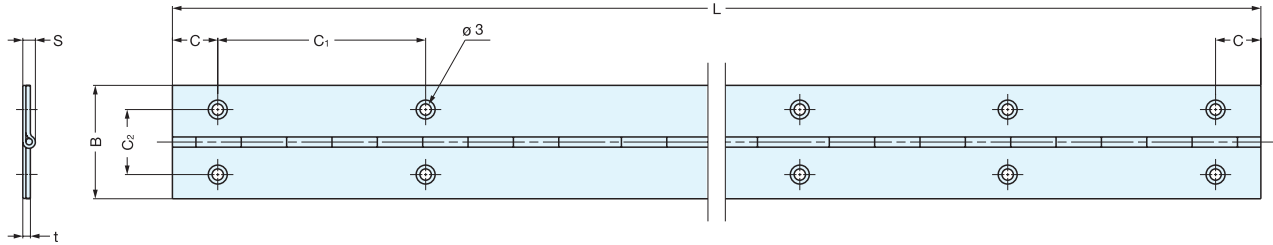
Item No.	Material	Finish / Color	L	A	P <sub>1</sub>	P <sub>2</sub>	B	# of Holes	Carton (pcs)
HG-MH400S	Aluminum (Body) / 304 Stainless Steel (Pin)	Silver	400 (15-3/4")	15	111	148	74	8	15
HG-MH400BR		Brown							
HG-MH400BL		Black							
HG-MH800S		Silver	800 (31-1/2")	17.5	127.5	170	85	12	10
HG-MH800BR		Brown							
HG-MH800BL		Black							
HG-MH1100S		Silver	1100 (43-5/16")	16.5	145.5	194	97	14	6
HG-MH1100BR		Brown							
HG-MH1100BL		Black							

# PIANO HINGE



# LSD-30

- Double folded construction provides extra rigidity.
- The knuckles on both ends are crimped to prevent the pin from being removed. The hinge pin does not occupy the crimped knuckles on both ends.



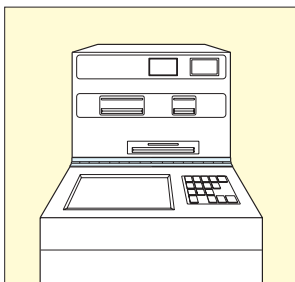
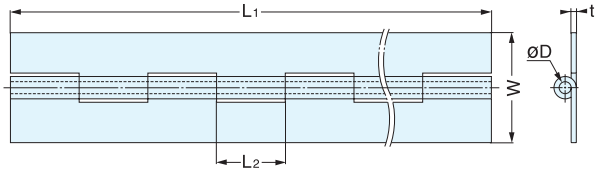
Material	Finish
304 Stainless Steel	Satin

Item No.	L	B	C	C <sub>1</sub>	C <sub>2</sub>	t	S	Holes	Weight (g)	Box (pcs)	Carton (pcs)
LSD-30-240	240 ( 9-29/64" )	30 ( 1-3/16" )	10.5	43.5	17	1.2	3.5	12	65	20	200
LSD-30-300	300 ( 11-13/16" )			46.3				14	80		
LSD-30-360	360 ( 14-11/64" )		15	47				16	95		
LSD-30-450	450 ( 17-23/32" )		14.5	60				16	120		
LSD-30-600	600 ( 23-5/18" )		14	63.3				20	190		
LSD-30-900	900 ( 35-7/16" )			62.3				30	280		

# PIANO HINGE (WELD-ON)



# LSN



Material	Finish
304 Stainless Steel	Satin

Item No.	L <sub>1</sub>	L <sub>2</sub>	W	t	D	Weight (g)	Box (pcs)	Carton (pcs)			
LSN8-25-300	300 ( 11-13/16" )	12.5	25 ( 63/64" )	0.8	2.6	66	20	200			
LSN8-25-600	600 ( 23-5/8" )					135					
LSN8-25-1000	1000 ( 39-3/8" )					222					
LSN8-25-1800	1800 ( 70-55/64" )		400			10	100				
LSN8-32-300	300 ( 11-13/16" )		20.5			32 ( 1-17/64" )	1.5	3.5	80	20	200
LSN8-32-600	600 ( 23-5/8" )								159		
LSN8-32-1000	1000 ( 39-3/8" )								272		
LSN8-32-1800	1800 ( 70-55/64" )					492			10	100	
LSN8-38-1000	1000 ( 39-3/8" )					289					
LSN8-38-1800	1800 ( 70-55/64" )	542									
LSN15-32-300	300 ( 11-13/16" )	20	32 ( 1-17/64" )	1.5	3.5	78	10	100			
LSN15-32-350	350 ( 13-25/32" )					192					
LSN15-32-450	450 ( 17-23/32" )					248					
LSN15-32-600	600 ( 23-5/8" )					330					
LSN15-32-750	750 ( 29-17/32" )					410					
LSN15-32-850	850 ( 33-15/32" )					464					
LSN15-32-900	900 ( 35-7/16" )		498			5	50				
LSN15-32-1000	1000 ( 39-3/8" )		574								
LSN15-38-1000	1000 ( 39-3/8" )		615								
LSN15-38-1800	1800 ( 70-55/64" )		1121			50 ( 1-31/32" )	2	5	774		
LSN15-50-1000	1000 ( 39-3/8" )		759								
LSN15-50-1800	1800 ( 70-55/64" )		1367								
LSN20-50-1000	1000 ( 39-3/8" )	50									