

Camloc

Motion Control

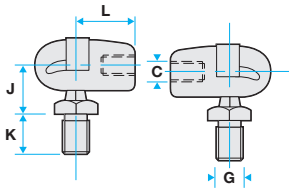
End Fittings

Camloc gas springs offer a wide range of end fittings to suit your application, manufactured from a range of finishes and materials including nylon, steel and zinc. End fittings can be either the same or you can choose different sizes and types for each end.

Benefits

- Many different designs and sizes for flexibility of mounting
- Range of materials and finishes
- Designed to suit your application
- Maintenance free
- BS EN ISO 9001 Registered Company

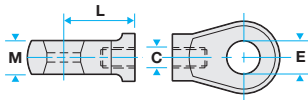




Nylon Ball Joints

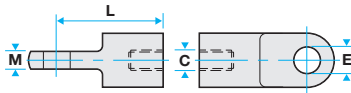
Dim	P1	P2	P5	P7	P8	P9	PE	PV
J	9.0mm	14.0mm	12.0mm	-	-	-	9.0mm	12.0mm
+/-	0.25mm	0.25mm	0.25mm	-	-	-	0.25mm	0.25mm
K	10.3mm	9.0mm	12.5mm	-	-	-	10.3mm	12.5mm
+/-	0.25mm	0.25mm	0.25mm	-	-	-	0.25mm	0.25mm
G	M5 x 0.8	M5 x 0.8	M8 x 1.25	-	-	-	M5 x 0.8	M8 x 1.25
C	M5 x 0.8	M5 x 0.8	M6 x 1.0	M5 x 0.8	M6 x 1.0	M5 x 0.8	M5 x 0.8	M6 x 1.0
L	17.5mm	17.5mm	17.5mm	17.5mm	17.5mm	17.5mm	17.5mm	18.0mm
+/-	0.25mm	0.25mm	0.25mm	0.25mm	0.25mm	0.25mm	0.25mm	0.25mm

Stainless Pin



Nylon Eyes

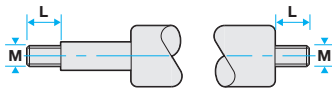
Dim	E1	E3	E4	E5	EA
E	6.1mm	8.1mm	6.1mm	10.1mm	6.1mm
+/-	0.10mm	0.05mm	0.05mm	0.05mm	0.01mm
M	8.075mm	10.0mm	10.0mm	10.0mm	8.075mm
+/-	0.125mm	0.12mm	0.12mm	0.12mm	0.125mm
L	17.0mm	21.0mm	21.0mm	21.0mm	17.0mm
+/-	0.5mm	0.25mm	0.25mm	0.25mm	0.5mm
C	M5 x 0.8	M6 x 1.0	M6 x 1.0	M6 x 1.0	M5 x 0.8



Flat Eyes

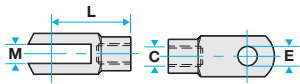
Dim	F1	F2	F4	F5	F9	J1	J2	J3	J4
E	6.1mm	8.1mm	8.2mm	10.0mm	10.2mm	8.0mm	8.0mm	10.0mm	8.0mm
+/-	0.12mm	0.12mm	0.12mm	H9	0.12mm	H9	H9	H9	H9
M	3.0mm	5.0mm	8.0mm	10.2mm	3.0mm	5.12mm	8.12mm	10.12mm	8.12mm
+/-	0.12mm	0.12mm	0.12mm	0.12mm	0.12mm	0.12mm	0.12mm	0.12mm	0.12mm
L	22.0mm	25.0mm	32.0mm	32.0mm	25.0mm	25.0mm	32.0mm	32.0mm	32.0mm
+/-	0.25mm	0.25mm	0.25mm	0.25mm	0.25mm	0.25mm	0.25mm	0.25mm	0.25mm
C	M5 x 0.8	M6 x 1.0	M8 x 1.25	M10 x 1.5	M6 x 1.0	M6 x 1.0	M8 x 1.25	M10 x 1.5	M10 x 1.5

Stainless



Studs

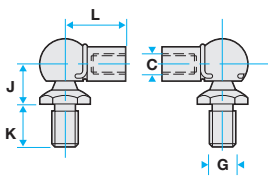
Dim	S1	S4	S6	S8	S9
M	M8 x 1.25	M10 x 1.5	M5 x 0.8	M6 x 1.0	No Thread
L	12mm	12mm	10mm	10mm	No Thread



Clevis Forks

Dim	C1	C2	C3	C4	H1	H2
E	5.0mm	6.0mm	8.0mm	10.0mm	6.0mm	8.0mm
+/-	H9	H9	H9	H9	H9	H9
M	5.15mm	6.25mm	8.15mm	10.3mm	6.25mm	8.25mm
+/-	0.12mm	0.12mm	0.12mm	0.12mm	0.12mm	0.12mm
L	20.0mm	24.0mm	32.0mm	37.0mm	24.0mm	32.0mm
+/-	0.25mm	0.25mm	0.25mm	0.25mm	0.25mm	0.25mm
C	M5 x 0.8	M6 x 1.0	M8 x 1.25	M10 x 1.5	M6 x 1.0	M8 x 1.25

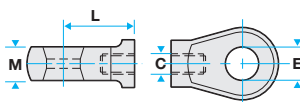
Stainless



Ball Joints - Steel

Dim	B1	B2	B3	B4	B6	B8	B9	G1	G2	G5	G6
J	14.0mm	12.0mm	12.0mm	13.0mm	16.0mm	-	-	12.0mm	-	13.0mm	16.0mm
+/-	0.25mm	0.25mm	0.25mm	0.25mm	0.25mm	-	-	0.25mm	-	0.25mm	0.25mm
K	9.0mm	12.5mm	12.5mm	16.5mm	20.0mm	-	-	12.5mm	-	16.5mm	20.0mm
+/-	0.25mm	0.25mm	0.25mm	0.25mm	0.25mm	-	-	0.25mm	-	0.25mm	0.25mm
G	M5 x 0.8	M8 x 1.25	5/16" UNC	M8 x 1.25	M10 x 1.5	-	-	M8 x 1.25	-	M8 x 1.25	M10 x 1.5
L	18.0mm	18.0mm	18.0mm	30.0mm	35.0mm	18.0mm	30.0mm	18.0mm	18.0mm	30.0mm	35.0mm
+/-	0.25mm	0.25mm	0.25mm	0.25mm	0.25mm	0.25mm	0.25mm	0.25mm	0.25mm	0.25mm	0.25mm
C	M6 x 1.0	M6 x 1.0	M6 x 1.0	M8 x 1.25	M10 x 1.5	M6 x 1.0	M8 x 1.25	M6 x 1.0	M6 x 1.0	M8 x 1.25	M10 x 1.5

Ball Joints - Stainless



Zinc Eyes

Dim	Z2	Z3	Z4	Z5	Z7
E	8.3mm	10.3mm	8.3mm	10.3mm	12.6mm
+/-	0.1mm	0.1mm	0.1mm	0.1mm	0.2mm
M	10.0mm	10.0mm	10.0mm	10.0mm	10.0mm
+/-	0.12mm	0.12mm	0.12mm	0.12mm	0.12mm
L	21.0mm	21.0mm	21.0mm	21.0mm	29.0mm
+/-	0.25mm	0.25mm	0.25mm	0.25mm	0.2mm
C	M6 x 1.0	M6 x 1.0	M8 x 1.25*	M8 x 1.25*	M6 x 1.0

*Cannot be used on 14-28

Dimensions are shown in millimeters

If you have any questions about specifying end fittings, please call +44 (0)116 274 3600.

Camloc Motion Control Ltd

15 New Star Road, Leicester, LE4 9JD, UK

Tel: +44 (0)116 274 3600 Fax: +44 (0)116 274 3620

E-mail: info@camloc.com Website: www.camloc.com

Vari-Lift, Swift & Sure, Stop & Stay and Econoloc are trade names of Camloc Motion Control Ltd.



FM00229